

The Road to Excellence Starts with Safety

Sold To #: 300721	Ship To #: 2965001	Quote #:	Sales Order #: 900018404
Customer: WPX ENERGY ROCKY MOUNTAIN LLC-EBUS	Customer Rep: Hartl, Al		
Well Name: RWF	Well #: 513-36	API/UWI #: 05-045-21472	
Field: RULISON	City (SAP): RIFLE	County/Parish: Garfield	State: Colorado
Lat: N 39.482 deg. OR N 39 deg. 28 min. 56.233 secs.	Long: W 107.837 deg. OR W -108 deg. 9 min. 47.801 secs.		
Contractor: NABORS 576	Rig/Platform Name/Num: NABORS 576		
Job Purpose: Cement Surface Casing			
Well Type: Development Well	Job Type: Cement Surface Casing		
Sales Person: MAYO, MARK	Srv Supervisor: KUKUS, CHRISTOPHER	MBU ID Emp #: 413952	

Job Personnel

HES Emp Name	Exp Hrs	Emp #	HES Emp Name	Exp Hrs	Emp #	HES Emp Name	Exp Hrs	Emp #
KUKUS, CHRISTOPHER A	0.0	413952	MILLER II, MATTHEW Reginald	0.0	425164	WALPOLE, DARREN Livingston	0.0	485294

Equipment

HES Unit #	Distance-1 way	HES Unit #	Distance-1 way	HES Unit #	Distance-1 way	HES Unit #	Distance-1 way
	60 mile	10744549	60 mile	11360883	60 mile	11808849	60 mile

Job Hours

Date	On Location Hours	Operating Hours	Date	On Location Hours	Operating Hours	Date	On Location Hours	Operating Hours

TOTAL Total is the sum of each column separately

Job				Job Times			
Formation Name	Formation Depth (MD)	Top	Bottom	Called Out	Date	Time	Time Zone
Form Type			BHST	On Location	18 - Dec - 2012	21:10	MST
Job depth MD	1145. ft		Job Depth TVD	Job Started	19 - Dec - 2012	02:30	MST
Water Depth			Wk Ht Above Floor	Job Completed	19 - Dec - 2012	07:54	MST
Perforation Depth (MD)	From		To	Job Completed	19 - Dec - 2012	08:54	MST
				Departed Loc	19 - Dec - 2012	10:30	MST

Well Data

Description	New / Used	Max pressure psig	Size in	ID in	Weight lbm/ft	Thread	Grade	Top MD ft	Bottom MD ft	Top TVD ft	Bottom TVD ft
OPEN HOLE				13.5				.	1160.		
SURFACE CASING	New		9.625	9.001	32.3		J-55	.	1145.		

Sales/Rental/3rd Party (HES)

Description	Qty	Qty uom	Depth	Supplier
PLUG,CMTG,TOP,9 5/8,HWE,8.16 MIN/9.06 MA	1	EA		

Tools and Accessories

Type	Size	Qty	Make	Depth	Type	Size	Qty	Make	Depth	Type	Size	Qty	Make
Guide Shoe					Packer					Top Plug			
Float Shoe					Bridge Plug					Bottom Plug			
Float Collar					Retainer					SSR plug set			
Insert Float										Plug Container			
Stage Tool										Centralizers			

Miscellaneous Materials

Gelling Agt	Conc	Surfactant	Conc	Acid Type	Qty	Conc	%
Treatment Fld	Conc	Inhibitor	Conc	Sand Type	Size	Qty	

Fluid Data

Stage/Plug #: 1									
Fluid #	Stage Type	Fluid Name	Qty	Qty uom	Mixing Density lbm/gal	Yield ft ³ /sk	Mix Fluid Gal/sk	Rate bbl/min	Total Mix Fluid Gal/sk

HALLIBURTON***Cementing Job Summary***

1	Water Spacer		20.00	bbl	.	.0	.0	.0	
2	Lead Cement	VERSACEM (TM) SYSTEM (452010)	160.0	sacks	12.3	2.38	13.75		13.75
	13.75 Gal	FRESH WATER							
3	Tail Cement	VERSACEM (TM) SYSTEM (452010)	160.0	sacks	12.8	2.11	11.75		11.75
4	Displacement		86.00	bbl	.	.0	.0	.0	
Calculated Values		Pressures		Volumes					
Displacement		Shut In: Instant		Lost Returns		Cement Slurry		Pad	
Top Of Cement		5 Min		Cement Returns		Actual Displacement		Treatment	
Frac Gradient		15 Min		Spacers		Load and Breakdown		Total Job	
Rates									
Circulating		Mixing		Displacement		Avg. Job			
Cement Left In Pipe	Amount	44 ft	Reason	Shoe Joint					
Frac Ring # 1 @	ID		Frac ring # 2 @	ID		Frac Ring # 3 @	ID		Frac Ring # 4 @
The Information Stated Herein Is Correct				Customer Representative Signature					

The Road to Excellence Starts with Safety

Sold To #: 300721	Ship To #: 2965001	Quote #:	Sales Order #: 900018404
Customer: WPX ENERGY ROCKY MOUNTAIN LLC-EBUS	Customer Rep: Hartl, Al		
Well Name: RWF	Well #: 513-36	API/UWI #: 05-045-21472	
Field: RULISON	City (SAP): RIFLE	County/Parish: Garfield	State: Colorado
Legal Description:			
Lat: N 39.482 deg. OR N 39 deg. 28 min. 56.233 secs.		Long: W 107.837 deg. OR W -108 deg. 9 min. 47.801 secs.	
Contractor: NABORS 576	Rig/Platform Name/Num: NABORS 576		
Job Purpose: Cement Surface Casing			Ticket Amount:
Well Type: Development Well	Job Type: Cement Surface Casing		
Sales Person: MAYO, MARK	Srvc Supervisor: KUKUS, CHRISTOPHER	MBU ID Emp #: 413952	

Activity Description	Date/Time	Cht #	Rate bbl/min	Volume bbl		Pressure psig		Comments
				Stage	Total	Tubing	Casing	
Call Out	12/18/2012 21:10							ELITE # 9
Depart Yard Safety Meeting	12/18/2012 22:30							ALL HES EMPLOYEES
Arrive At Loc	12/19/2012 02:30							RIG PULLING DRILL PIPE HES CREW ARRIVED 30 MINS EARLY AND WAS ASKED TO GO AHEAD AND SPOT TRUCKS AND RIG UP
Assessment Of Location Safety Meeting	12/19/2012 02:45							ALL HES EMPLOYEES
Pre-Rig Up Safety Meeting	12/19/2012 02:50							ALL HES EMPLOYEES
Rig-Up Equipment	12/19/2012 03:00							1 F-550 PICKUP 1 HT-400 PUMP TRUCK 1 660 BULK TRUCK
Pre-Job Safety Meeting	12/19/2012 07:40							ALL HES EMPLOYEES AND RIG CREW
Start Job	12/19/2012 07:54							TD: 1160 TP: 1145 SJ: 44 CSG: 9 5/8 32.3# OH: 13 1/2 MUD WT 9.5 RIG GOING TO CIRCULATE TILL HES IS READY
Test Lines	12/19/2012 07:57					4610.0		PRESSURE TEST OK
Pump Spacer	12/19/2012 08:02		4	20	20		110.0	FRESH WATER SPACER
Activity Description	Date/Time	Cht #	Rate bbl/min	Volume bbl		Pressure psig		Comments
				Stage	Total	Tubing	Casing	

Sold To #: 300721

Ship To #: 2965001

Quote #:

Sales Order #: 900018404

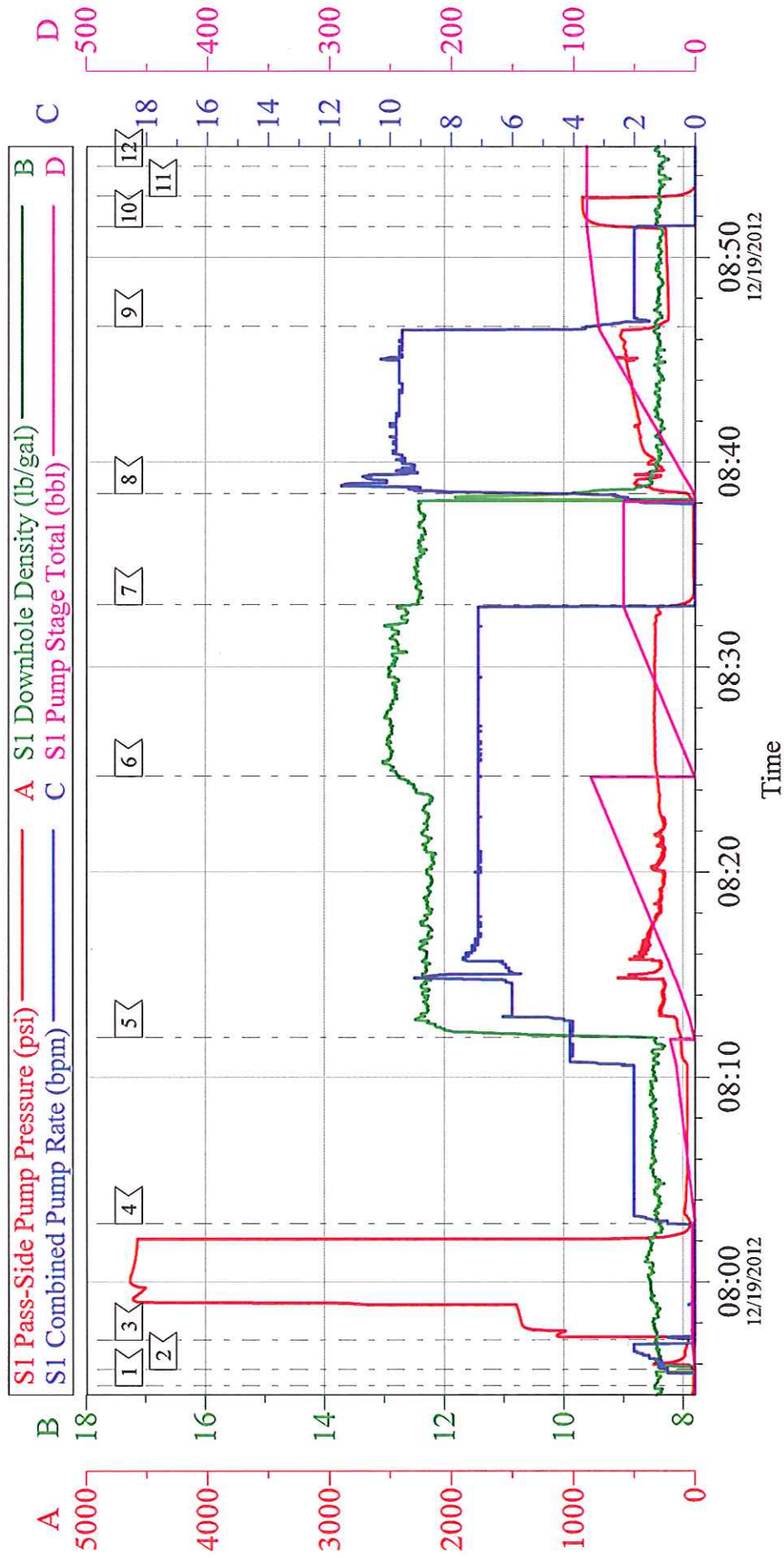
SUMMIT Version: 7.3.0045

Monday, January 14, 2013 03:24:00

Pump Lead Cement	12/19/2012 08:11		7	67.8	67.8		309.0	160 SKS 12.3 PPG 2.38 YEILD 13.75 GAL / SK LEAD CEMENT WEIGHT VERIFIED VIA MUD SCALES THROUGH OUT LEAD CEMENT
Pump Tail Cement	12/19/2012 08:24		7	60.1	60.1		335.0	160 SKS 12.8 PPG 2.11 YEILD 11.75 GAL / SK TAIL CEMENT WEIGHT VERIFIED VIA MUD SCALES THROUGH OUT TAIL CEMENT
Shutdown	12/19/2012 08:33							HES WASHED UP ON TOP OF THE PLUG PER CO-REP REQUEST
Drop Plug	12/19/2012 08:34							PLUG AWAY NO PROBLEMS
Pump Displacement	12/19/2012 08:38		10	86.6	86.6		600.0	FRESH WATER DISPLACEMENT
Slow Rate	12/19/2012 08:46		2	76.6	76.6		240.0	SLOW RATE TO BUMP PLUG
Bump Plug	12/19/2012 08:51		2	86.6	86.6		245.0	BUMP PLUG @ 245 AND TOOK PRESSURE UP TO 922 PSI
Check Floats	12/19/2012 08:52							FLOATS HELD .5 BBL BACK TO DISPLACEMENT TANKS
End Job	12/19/2012 08:54							WELL HAD GOOD CIRCULATION THROUGH OUT CEMENT JOB GOT 30 BBLs OF CEMENT TO SURFACE RIG USED NO SUGAR TICKET CHANGES: DEPTH CHARGE TO 1145 TOOK OFF ADD HOURS, SUGAR AND DERRICK CHARGE
Pre-Rig Down Safety Meeting	12/19/2012 09:00							ALL HES EMPLOYEES
Rig-Down Equipment	12/19/2012 09:20							
Pre-Convoy Safety Meeting	12/19/2012 10:20							ALL HES EMPLOYEES
Crew Leave Location	12/19/2012 10:30							THANKS FOR USING HALLIBURTON CEMENT CHRIS KUKUS AND CREW

WPX - RWF 513-36

9 5/8 SURFACE



Local Event Log

1	START JOB	07:54:56	2	FILL LINES	07:55:44	3	TEST LINES	07:57:11
4	PUMP H2O SPACE	08:02:51	5	PUMP LEAD CEMENT	08:11:57	6	PUMP TAIL CEMENT	08:24:40
7	SHUT DOWN / DROP PLUG	08:33:01	8	PUMP H2O DISPLACEMENT	08:38:27	9	SLOW RATE	08:46:37
10	BUMP PLUG	08:51:28	11	CHECK FLOATS	08:52:58	12	END JOB	08:54:26

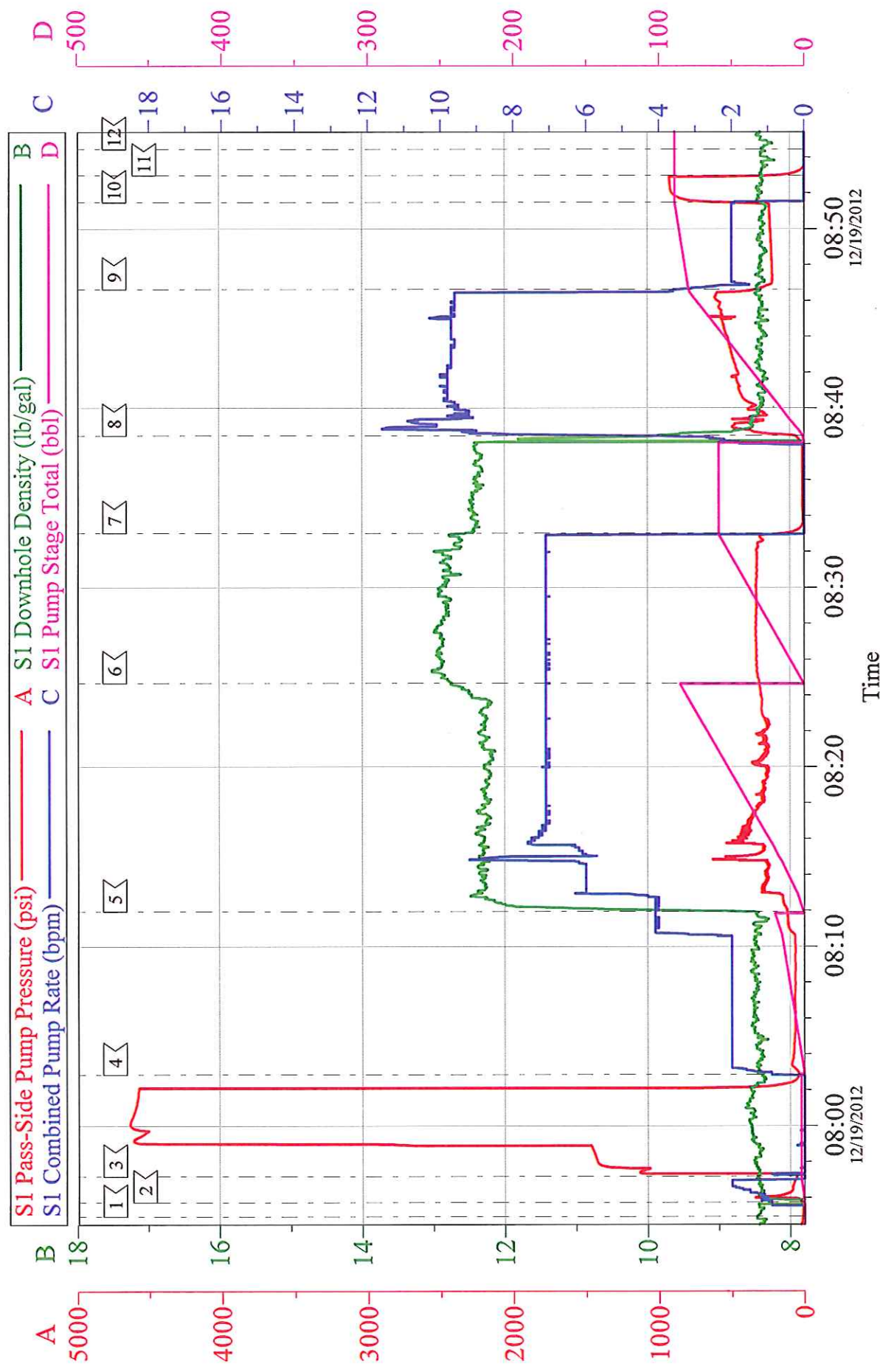
Customer: WPX
Well Description: RWF 513-36
Company Rep: AL HARTL

Job Date: 19-Dec-2012
Job Type: SURFACE
Cement Supervisor: CHRIS KUKUS

Sales Order #: 900018404
ADC Used: YES
Elite # 9: REGGIE MILLER

WPX - RWF 513-36

9 5/8 SURFACE



Customer: WPX	Job Date: 19-Dec-2012	Sales Order #: 900018404
Well Description: RWF 513-36	Job Type: SURFACE	ADC Used: YES
Company Rep: AL HARTL	Cement Supervisor: CHRIS KUKUS	Elite # 9: REGGIE MILLER