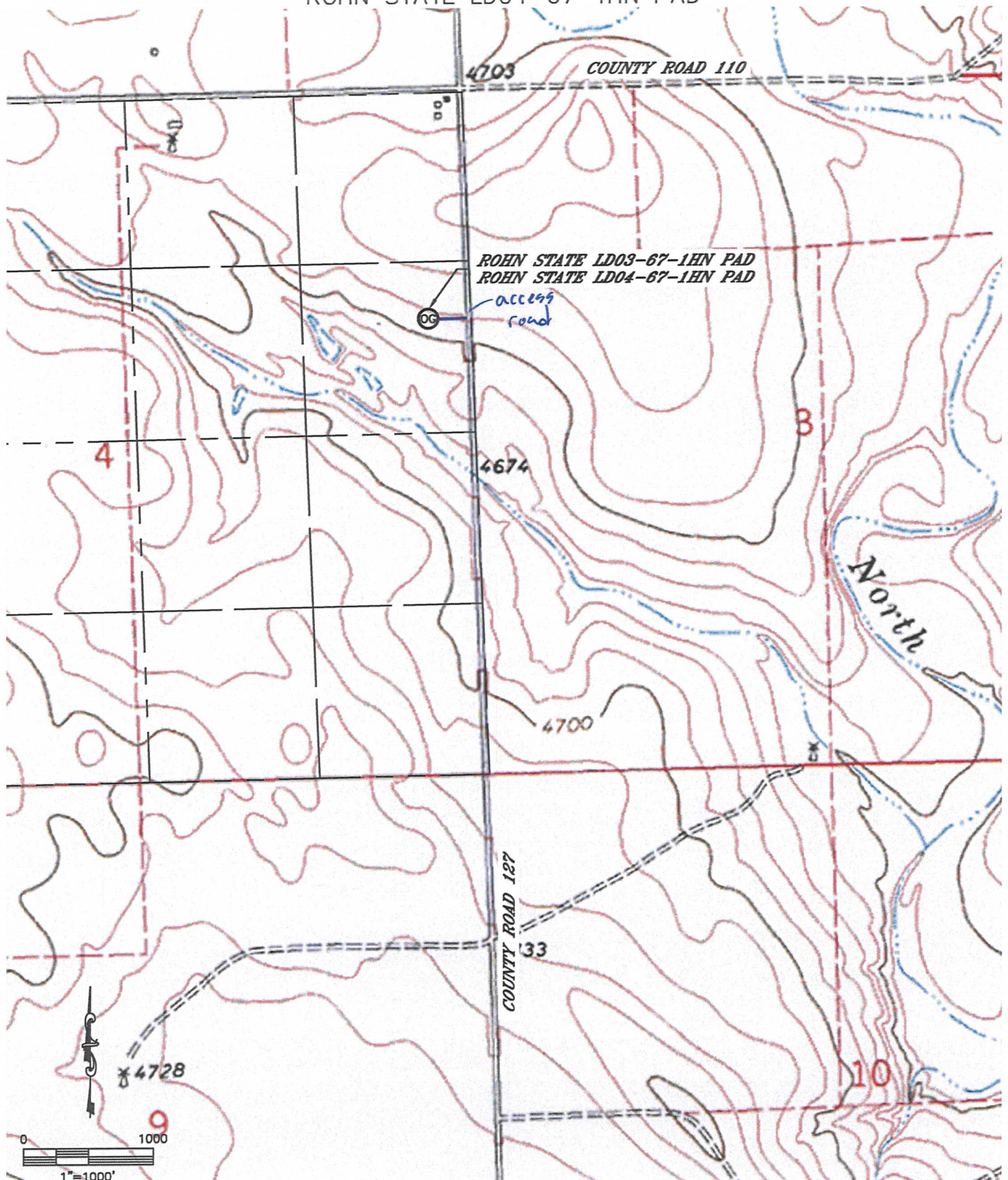


Lat40°, Inc. 1635 Foxtrail Drive, Suite 325 Loveland, CO 970-776-3321

ACCESS ROAD MAP

ROHN STATE LD03-67-1HN PAD,
ROHN STATE LD04-67-1HN PAD

SECTION: 4
TOWNSHIP: 9N
RANGE: 58W



DATE: rev1/31/2013
PROJECT#: 2012159