

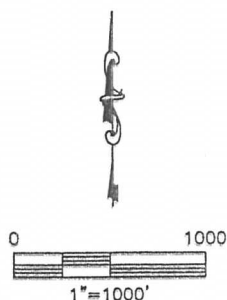
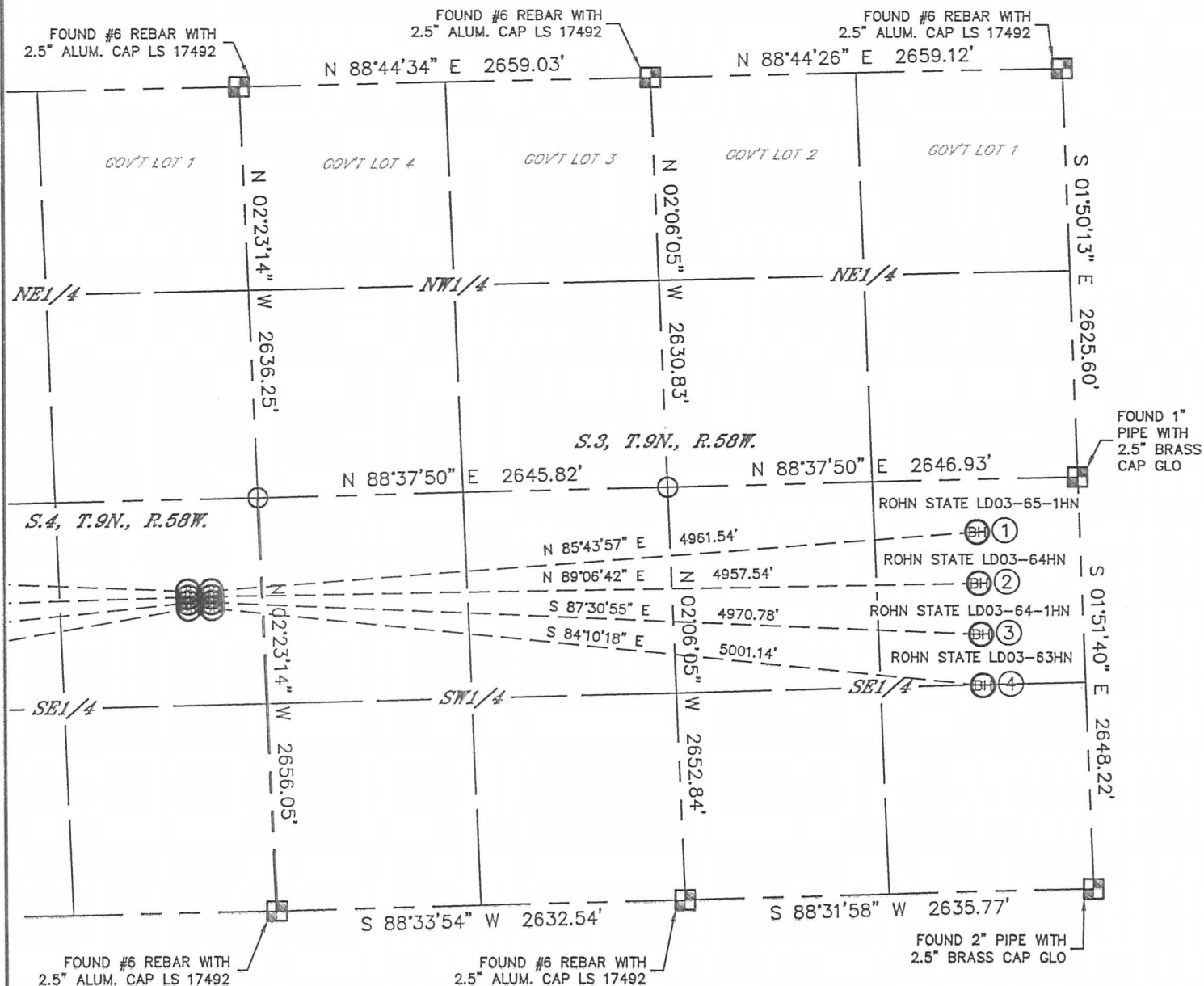
Lat40°, Inc. 1635 Foxtrail Drive, Suite 325 Loveland, CO 970-776-3321

MULTI-WELL PLAN

ROHN STATE LD03-65-1HN PAD,
ROHN STATE LD04-65-1HN PAD

THIS MAP DOES NOT REPRESENT A BOUNDARY SURVEY

SECTION: 4
TOWNSHIP: 9N
RANGE: 58W



LEGEND

 = ALIQUOT MONUMENT AS DESCRIBED

○ = CALCULATED POSITION

- | | | |
|---|---|---|
| <p>①</p> <p>—BOTTOM HOLE—
ROHN STATE
LD03-65-1HN
2310' FSL
660' FEL
LAT: 40.77958°N
LONG: 103.84347°W</p> | <p>②</p> <p>—BOTTOM HOLE—
ROHN STATE
LD03-64HN
1980' FSL
660' FEL
LAT: 40.77867°N
LONG: 103.84346°W</p> | <p>③</p> <p>—BOTTOM HOLE—
ROHN STATE
LD03-64-1HN
1650' FSL
660' FEL
LAT: 40.77777°N
LONG: 103.84344°W</p> |
| <p>⑤</p> <p>—BOTTOM HOLE—
ROHN STATE
LD04-65-1HN
2310' FSL
660' FWL
LAT: 40.77949°N
LONG: 103.87672°W</p> | <p>⑥</p> <p>—BOTTOM HOLE—
ROHN STATE
LD04-64HN
1980' FSL
660' FWL
LAT: 40.77858°N
LONG: 103.87669°W</p> | <p>⑦</p> <p>—BOTTOM HOLE—
ROHN STATE
LD04-64-1HN
1650' FSL
660' FWL
LAT: 40.77767°N
LONG: 103.87667°W</p> |
| | | <p>④</p> <p>—BOTTOM HOLE—
ROHN STATE
LD03-63HN
1320' FSL
660' FEL
LAT: 40.77686°N
LONG: 103.84342°W</p> |
| | | <p>⑧</p> <p>—BOTTOM HOLE—
ROHN STATE
LD04-63HN
1320' FSL
660' FWL
LAT: 40.77677°N
LONG: 103.87665°W</p> |

SHEET 1 OF 2

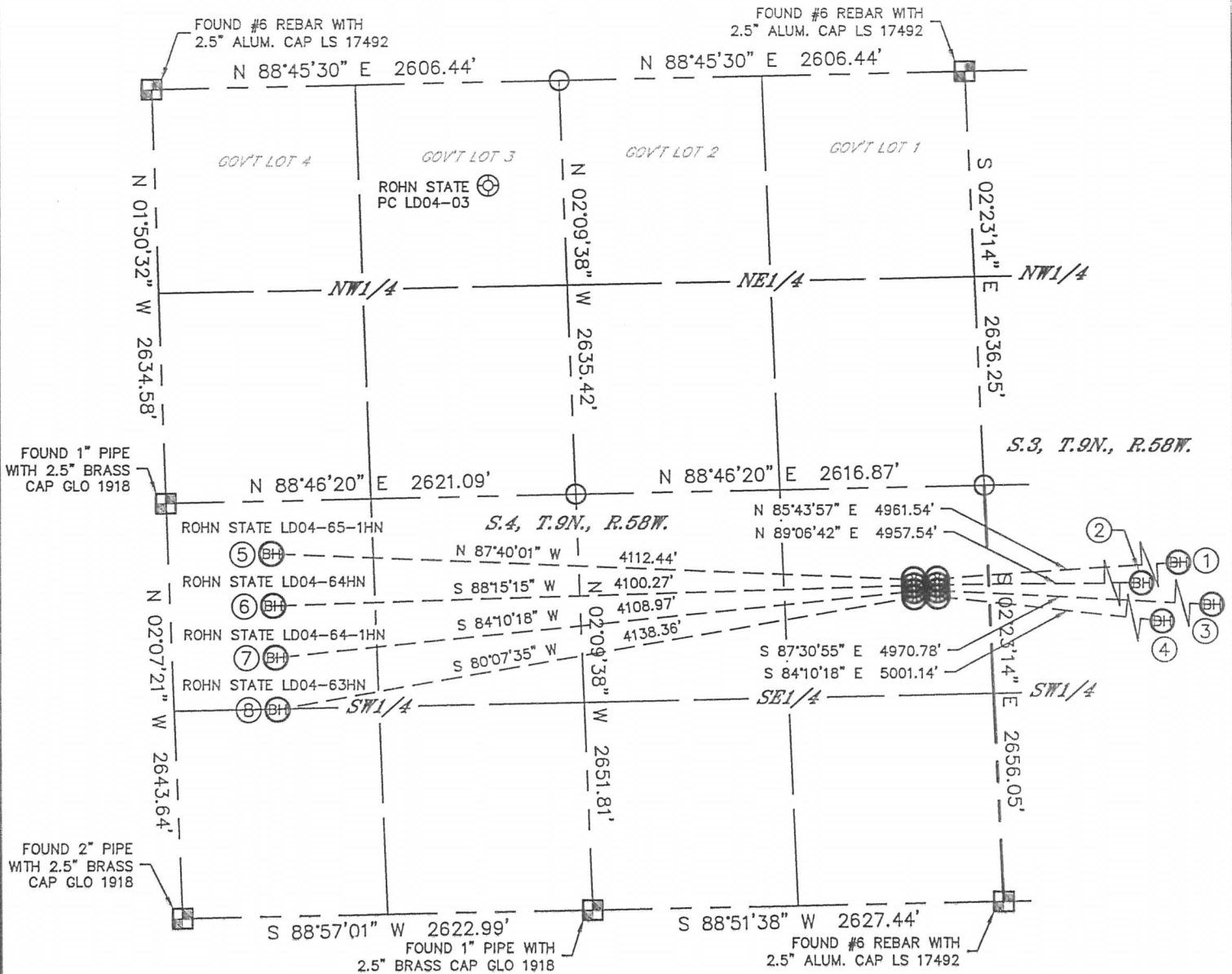
DATE: 1/22/2013
PROJECT#: 2012159

MULTI-WELL PLAN

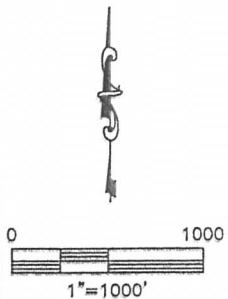
ROHN STATE LD03-65-1HN PAD,
ROHN STATE LD04-65-1HN PAD

SECTION: 4
TOWNSHIP: 9N
RANGE: 58W



THIS MAP DOES NOT REPRESENT A BOUNDARY SURVEY



- | | | | |
|--|--|--|--|
| ①
-BOTTOM HOLE-
ROHN STATE
LD03-65-1HN
2310' FSL
660' FEL
LAT: 40.77958°N
LONG: 103.84347°W | ②
-BOTTOM HOLE-
ROHN STATE
LD03-64HN
1980' FSL
660' FEL
LAT: 40.77867°N
LONG: 103.84346°W | ③
-BOTTOM HOLE-
ROHN STATE
LD03-64-1HN
1650' FSL
660' FEL
LAT: 40.77777°N
LONG: 103.84344°W | ④
-BOTTOM HOLE-
ROHN STATE
LD03-63HN
1320' FSL
660' FEL
LAT: 40.77686°N
LONG: 103.84342°W |
| ⑤
-BOTTOM HOLE-
ROHN STATE
LD04-65-1HN
2310' FSL
660' FWL
LAT: 40.77949°N
LONG: 103.87672°W | ⑥
-BOTTOM HOLE-
ROHN STATE
LD04-64HN
1980' FSL
660' FWL
LAT: 40.77858°N
LONG: 103.87669°W | ⑦
-BOTTOM HOLE-
ROHN STATE
LD04-64-1HN
1650' FSL
660' FWL
LAT: 40.77767°N
LONG: 103.87667°W | ⑧
-BOTTOM HOLE-
ROHN STATE
LD04-63HN
1320' FSL
660' FWL
LAT: 40.77677°N
LONG: 103.87665°W |



LEGEND

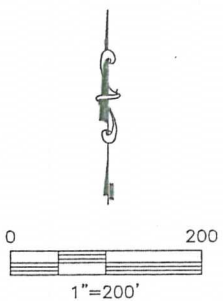
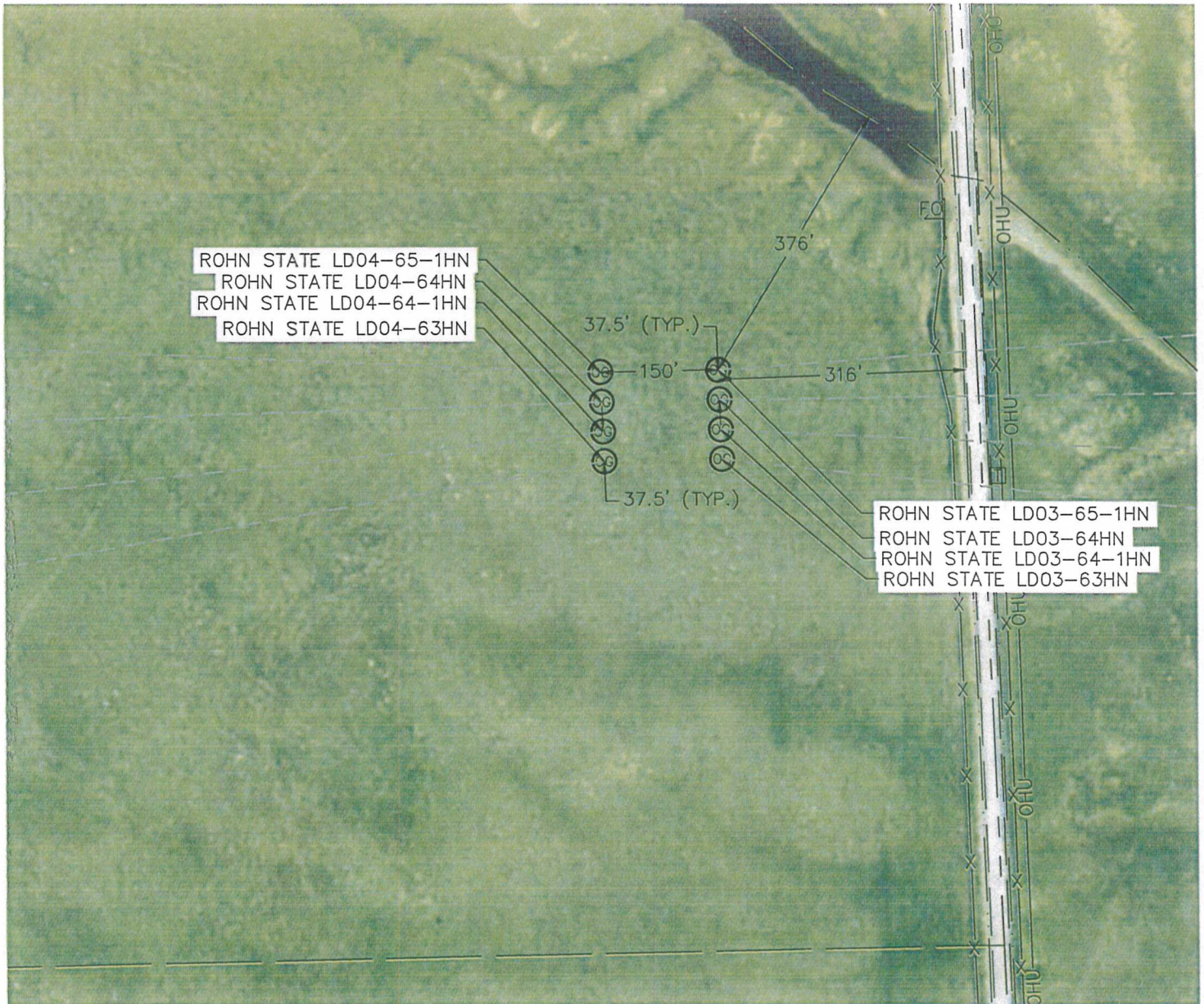
-  = ALIQUOT MONUMENT AS DESCRIBED
 = CALCULATED POSITION

Lat40°, Inc. 1635 Foxtrail Drive, Suite 325 Loveland, CO 970-776-3321

MULTI-WELL PLAN

ROHN STATE LD03-65-1HN PAD,
ROHN STATE LD04-65-1HN PAD

SECTION: 4
TOWNSHIP: 9N
RANGE: 58W



DATE: 1/22/2013
PROJECT#: 2012159