

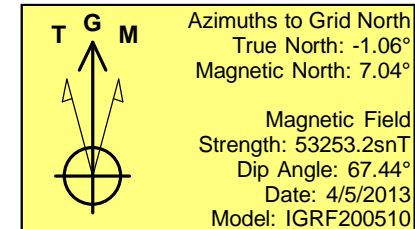
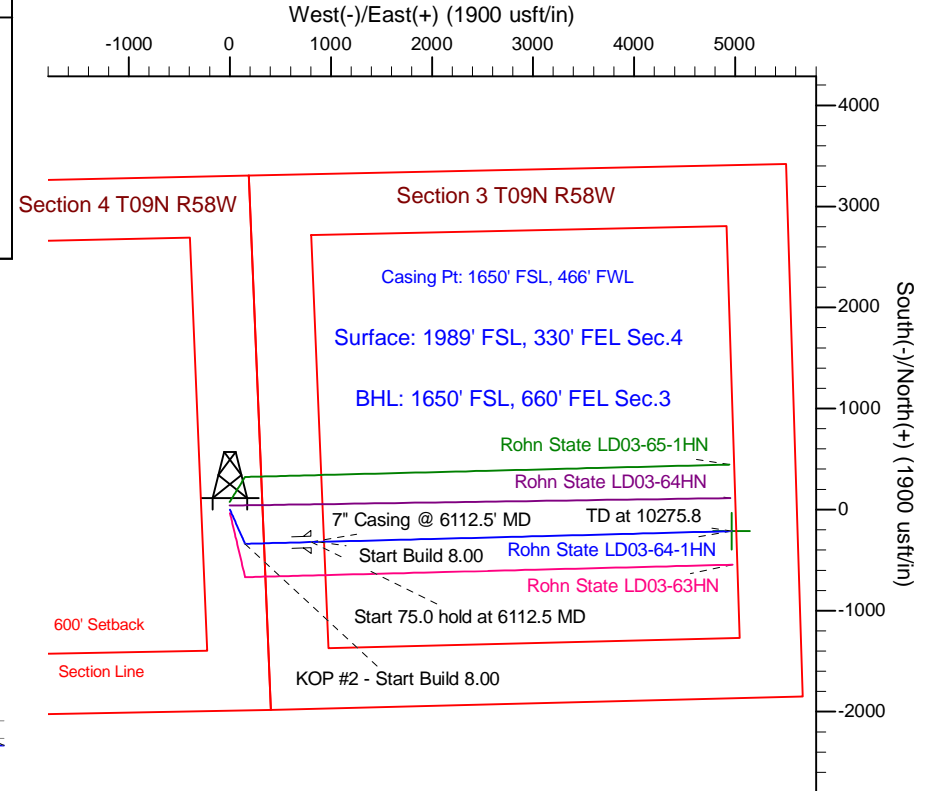
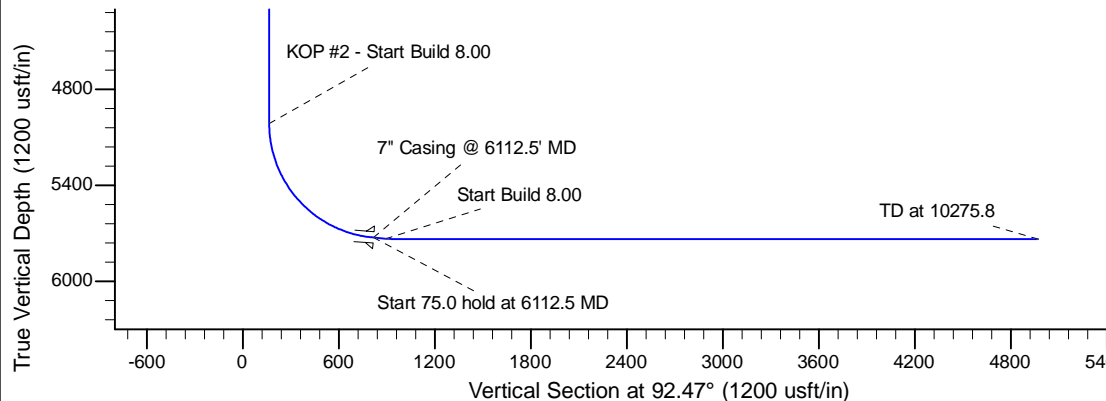
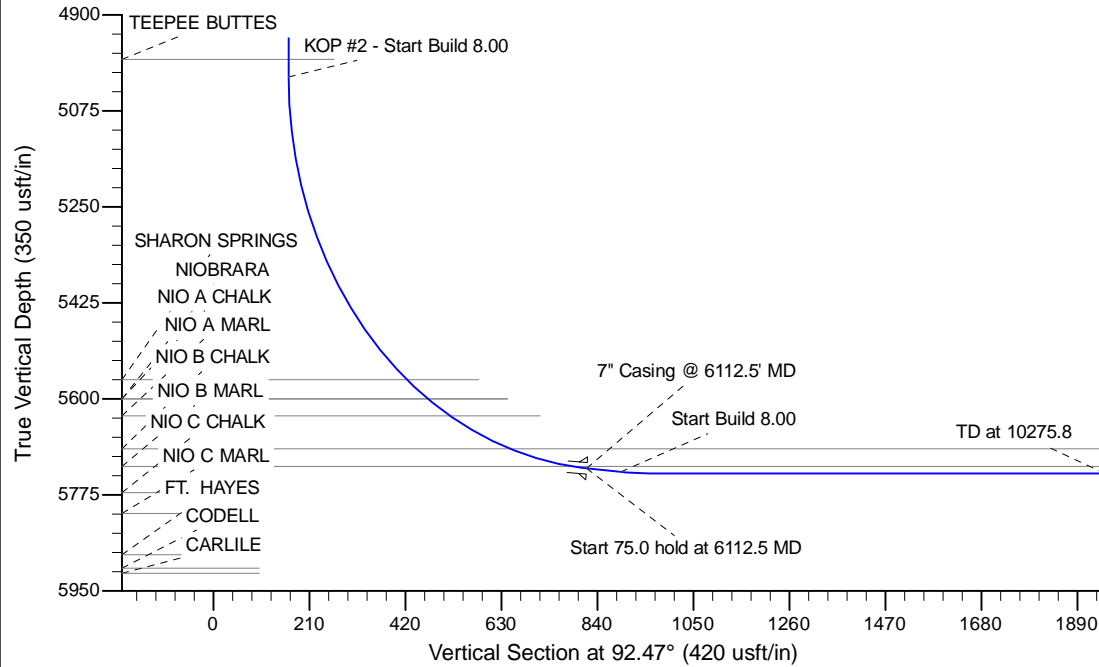
Project: Wattenberg Field
Site: LD (Sec.4-T09N-R58W) Weld County, CO
Well: Rohn State LD03-64-1HN
Wellbore: Original Drilling
Design: APD - Rev 0

Northern Region Drilling

Geodetic System: US State Plane 1983
Datum: North American Datum 1983
Ellipsoid: GRS 1980
Zone: Colorado Northern Zone
System Datum: Mean Sea Level

SECTION DETAILS

Sec	MD	Inc	Azi	TVD	+N/-S	+E/-W	Dleg	TFace	VSec	Target
1	0.0	0.00	0.00	0.0	0.0	0.0	0.00	0.00	0.0	
2	1500.0	0.00	0.00	1500.0	0.0	0.0	0.00	0.00	0.0	
3	2152.3	13.05	156.13	2146.7	-67.6	29.9	2.00	156.13	32.8	
4	3139.4	13.05	156.13	3108.3	-271.4	120.1	0.00	0.00	131.6	
5	3791.7	0.00	0.00	3755.0	-339.0	150.0	2.00	180.00	164.4	
6	5050.0	0.00	0.00	5013.3	-339.0	150.0	0.00	0.00	164.4	
7	6112.5	85.00	88.51	5726.7	-322.0	803.6	8.00	88.51	816.7	
8	6187.5	85.00	88.51	5733.3	-320.1	878.2	0.00	0.00	891.2	
9	6250.0	90.00	88.51	5736.0	-318.4	940.6	8.00	0.00	953.5	
10	10275.8	90.00	88.51	5736.0	-213.8	4965.1	0.00	0.00	4969.7	Rohn State LD03-64-1HN BHL 1650'FSL, 660'FEL



WELL DETAILS: Rohn State LD03-64-1HN				
Ground Level: 4703.0				
0.0	0.0	Northing	Easting	Latitude
		1530686.69	3453806.26	40.778610
				Longitude
				-103.861350
Plan: APD - Rev 0 (Rohn State LD03-64-1HN/Original Drilling)				
Created By: Shailey Jewell		Date: 11:15, April 10 2013		
Checked: _____		Date: _____		
Reviewed: _____		Date: _____		
Approved: _____		Date: _____		