

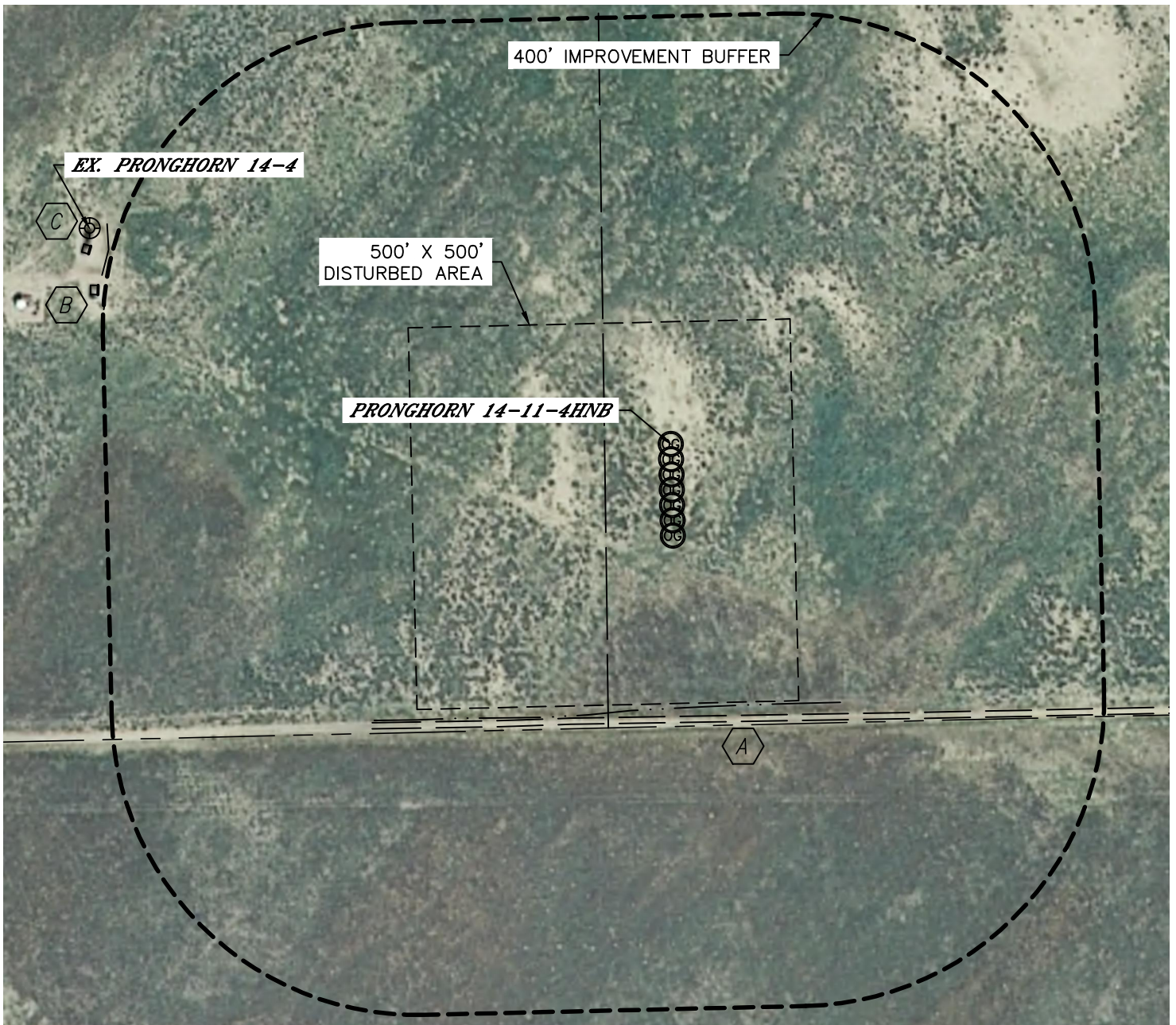


Lat40°, Inc. 1635 Foxtrail Drive, Suite 325 Loveland, CO 970-776-3321

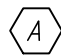

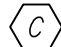
LOCATION DRAWING

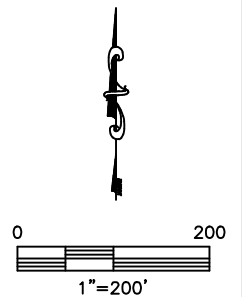
PRONGHORN J-4 PAD

SECTION: 4
TOWNSHIP: 5N
RANGE: 61W



IMPROVEMENTS:
(MEASURED FROM PROPOSED PRONGHORN J-F-4HZ WELL LOCATION)

-  ACCESS ROAD 361' S
-  EX. PRODUCTION EQUIPMENT 775' & 802' NW
-  EX. WELL HEAD 812' NW



NEAREST: BUILDING 5280'+, PUBLIC ROAD 1396' W (CR 89),
ABOVE GROUND UTILITY 5280'+, RAILROAD 5280'+, PROPERTY LINE 370' S

DATE: rev.4/11/2013
PROJECT#: 2012073