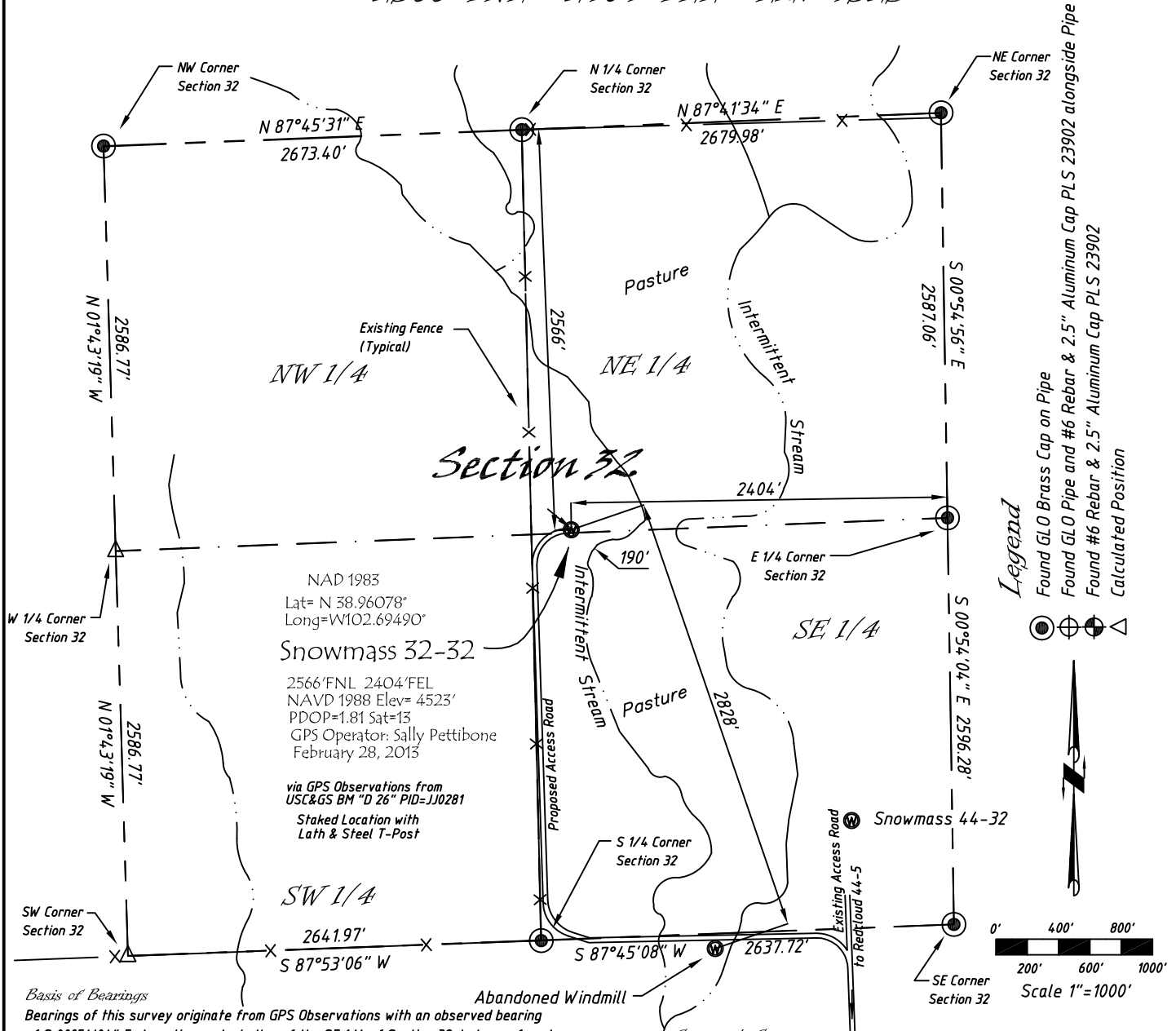


Well Location Map

Snowmass 32-32

Section 32, T12S, R47W, 6th P.M. Cheyenne County, Colorado
2566' FNL - 2404' FEL Elev=4523'



Basis of Bearings

Bearings of this survey originate from GPS Observations with an observed bearing of S 00°54'04" E along the easterly line of the SE 1/4 of Section 32, between found USGLO monuments at the E 1/4 Corner & SE Corner of Section 32, as shown hereon.

Directions:

From the Intersection of Hwy 287 & Hwy 40 near Kit Carson, CO, Go E on Hwy 40 Approximately 4.3 miles to cross rd, Go N on County Road 25, 6.7 miles to County Road V, then E 3 miles to Rd 28; Then N 4 miles to Rd Z a Well & Farm Access Rd to West; Then W 2.1 miles to Redcloud 44-5 Access Rd; Then N 0.1 miles to existing Redcloud 44-5 Well; Then N along Snowmass 44-32 Well Access Rd 0.75 miles +/- to Cross Trail to Old Windmill and Section line trail; Then Westerly past windmill on trail to N-S fenceline; Then N along fenceline 0.5 miles; Then bear E 200 +/- feet to staked location.

Notice: According to Colorado law you must commence any legal action based upon any defect in this survey within three years after you first discover such defect. In no event, may any action based upon any defect in this survey be commenced more than ten years from the date of the certification shown hereon.

Copyright © 2013

Vecta Oil & Gas Ltd

DRAWN GP	DATE 3/4/13	NE 1/4, Section 32
FB B77 P75	EQ HiPro	T12S, R47W, 6th P.M.
B80 P10		Cheyenne County, CO
SCALE 1"=1000'	SHEET 1 of 1	PROJECT NO. 1622.042



402 Walnut
Kanorado, KS
785/399/2537