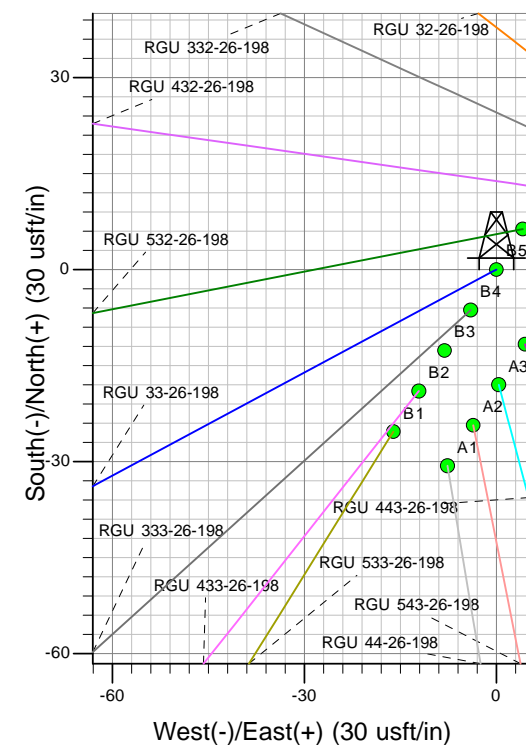
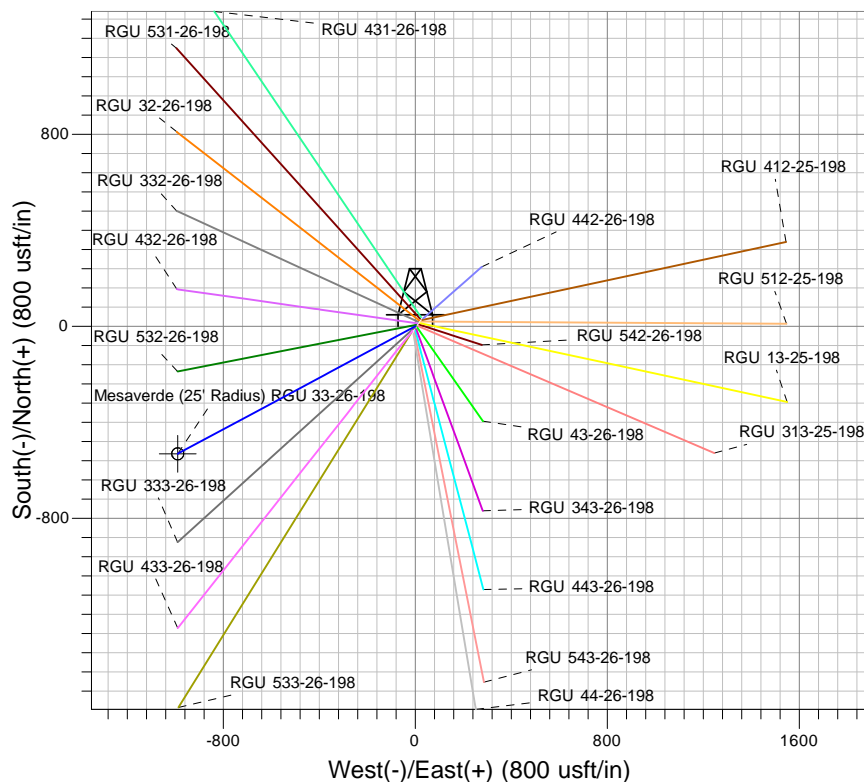
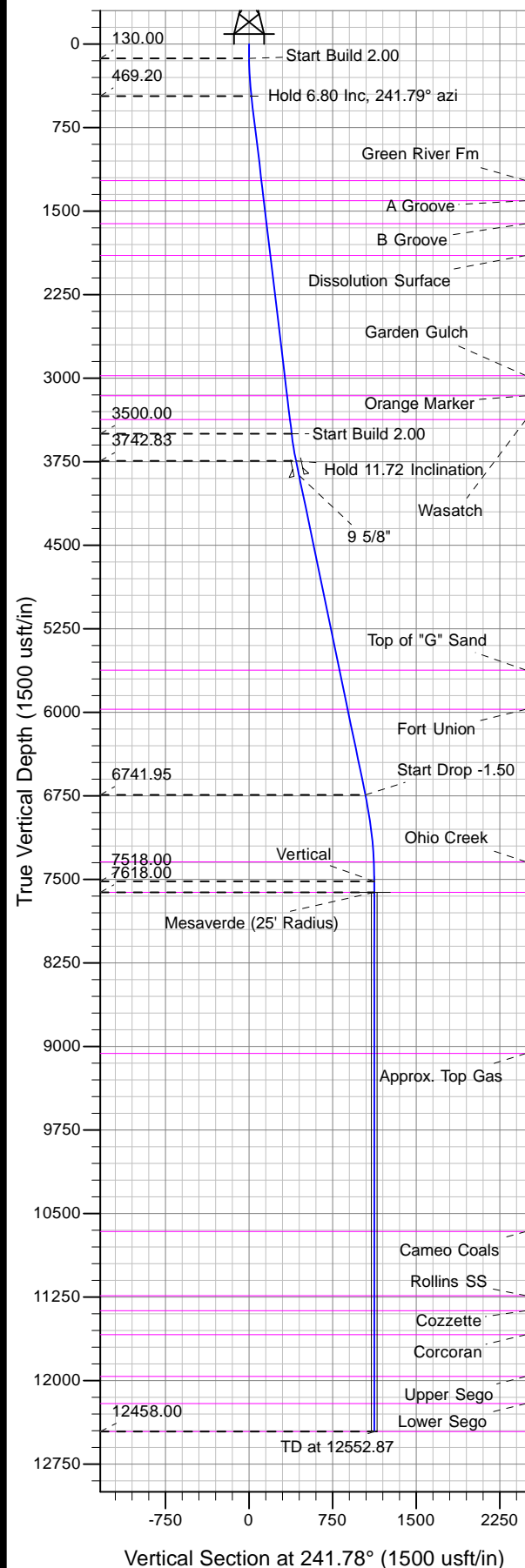




Well Name: RGU 33-26-198
Surface Location: RGU 42-26-198
North American Datum 1983 , US State Plane 1983 , Colorado Central Zone
Ground Elevation: 6622.00

+N/-S	+E/-W	Northing	Easting	Latitude	Longitude	Slot
0.00	0.00	1778084.70	2199590.30	39.93513	-108.35459	B5

KELLY BUSHING @ 6643.00usft (Cyclone 29 (21' RKB))



Project: RG 26-01S-098W
Site: RGU 42-26-198
Well: RGU 33-26-198
Design #1 24Jan13 kjs



Azimuths to True North
Magnetic North: 10.36°
Magnetic Field
Strength: 52273.7snT
Dip Angle: 65.99°
Date: 1/24/2013
Model: IGRF2010

ANNOTATIONS

MD	Inc	Azi	TVD	+N/-S	+E/-W	Vsect	Departure	Annotation
130.00	0.00	0.00	130.00	0.00	0.00	0.00	0.00	Start Build 2.00
470.00	6.80	241.79	469.20	-9.53	-17.76	20.15	20.15	Hold 6.80 Inc, 241.79° azi
3522.27	6.80	241.79	3500.00	-180.39	-336.22	381.55	381.55	Start Build 2.00
3768.38	11.72	241.78	3742.83	-199.11	-371.11	421.15	421.15	Hold 11.72 Inclination
6831.39	11.72	241.78	6741.95	-493.34	-919.47	1043.46	1043.46	Start Drop -1.50
7612.87	0.00	0.00	7518.00	-531.00	-989.66	1123.12	1123.12	Vertical
7712.87	0.00	0.00	7618.00	-531.00	-989.66	1123.12	1123.12	Mesaverde
12552.87	0.00	0.00	12458.00	-531.00	-989.66	1123.12	1123.12	TD at 12552.87