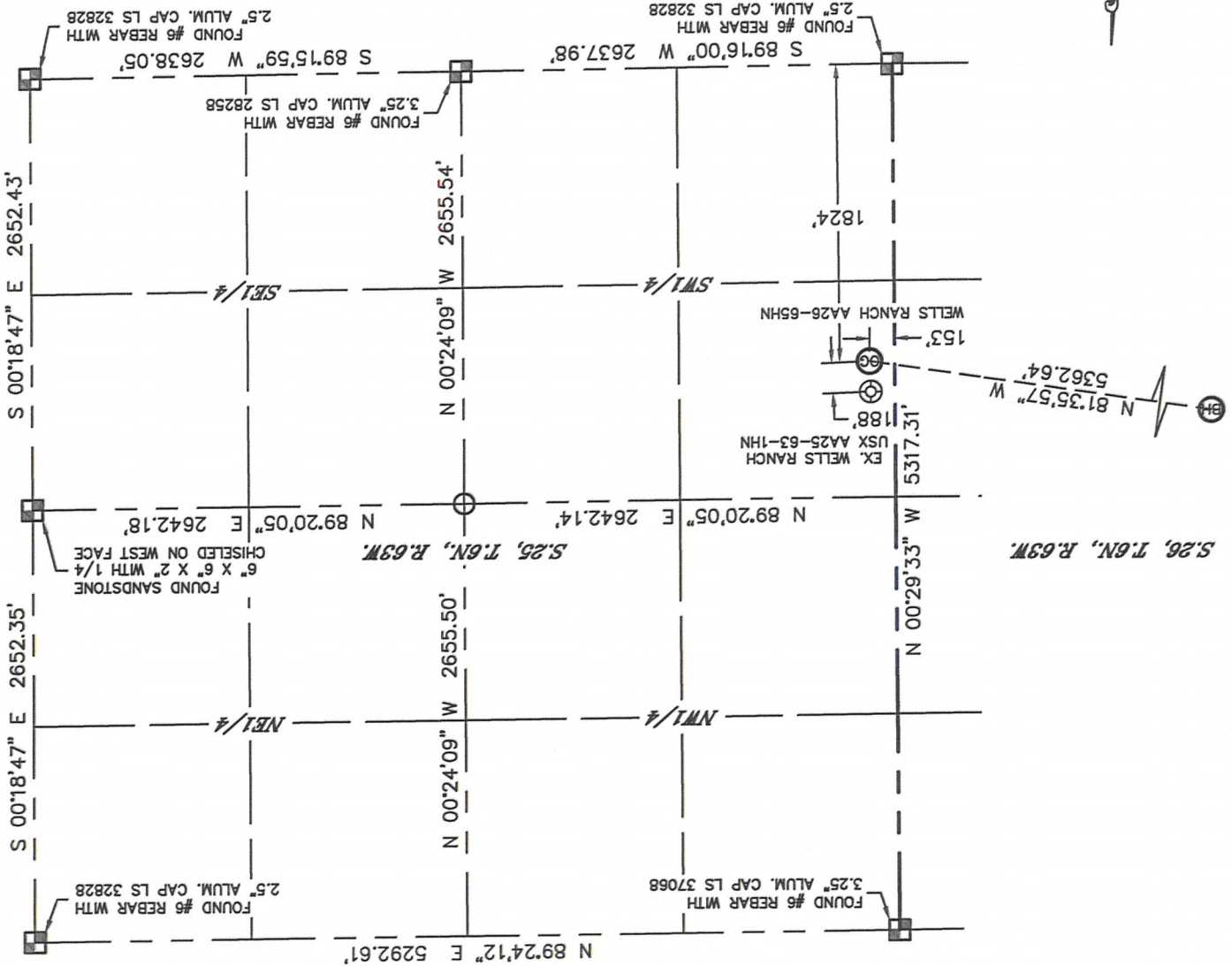


Lat40°, Inc. 1635 Foxtrail Drive, Suite 325 Loveland, CO 970-776-3321

WELL LOCATION CERTIFICATE

SECTION: 25
TOWNSHIP: 6N
RANGE: 63W

THIS MAP DOES NOT REPRESENT A BOUNDARY SURVEY



In accordance with a request from Matt Verbit with Noble Energy Inc. Lat40°, Inc. has determined the surface location of the WELLS RANCH AA26-65HN to be 1824' from the SOUTH line and 153' from the WEST line as measured at right angles from the section lines of Section 25. Township 6 North, Range 63 West and the bottom hole to be 2640' from the SOUTH line and 150' from the WEST line as measured at right angles from the section lines of Section 26, Township 6 North, Range 63 West of the Sixth Principal Meridian, County of Weld, State of Colorado.

I hereby state that this Well Location Certificate was prepared by me, or under my direct supervision, that the fieldwork was completed on 10/30/12, for and on behalf of Noble Energy Inc. That this is not a Land Survey Plat or an Improvement Survey Plat, and that it is not to be relied upon for establishment of fence, building, or other future improvement lines.

- NOTE:
- 1) Bearings shown are Grid Bearings of the Colorado State Plane Coordinate System, North Zone, North American Datum 1983/2007. The lineal dimensions as contained herein are based upon the "U.S. Survey Foot."
 - 2) Ground elevations are based on an observed GPS elevation
 - 3) NEAREST EXISTING WELL: WELLS RANCH USX AA25-63-1HN, 188'
 - 4) IMPROVEMENTS: See LOCATION DRAWING for all visible improvements within 400' of disturbed area.
 - 5) SURFACE USE: RANGELAND / EX. WELL PAD
 - 6) INSTRUMENT OPERATOR: WYATT HALL

NOTE
According to Colorado law, you must commence any legal action based upon any defect in this W.L.C. within three years after you discover such defect. In no event, may any action based upon any defect in this survey be commenced more than ten years after the date of the certificate shown hereon. (13-80-105 C.R.S.)

LEGEND
□ = ALIQUOT MONUMENT AS DESCRIBED
○ = CALCULATED POSITION

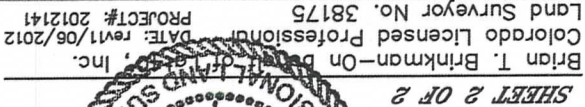
SHEET 1 OF 2



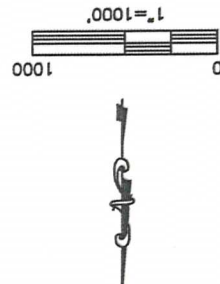
Brian T. Brinkman-On Behalf of Lat40°, Inc.
Colorado Licensed Professional Surveyor No. 38175
DATE: rev11/06/2012
PROJECT#: 2012141

WELL LOCATION CERTIFICATE

THIS MAP DOES NOT REPRESENT A BOUNDARY SURVEY

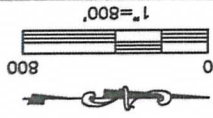


NOTE: According to Colorado law, you must commence any legal action based upon any defect in this W.L.C. within three years after you discover such defect. In no event, may any action based upon any defect in this survey be commenced more than ten years after the date of the certificate shown hereon. (13-80-105 C.R.S.)



SECTION: 25
TOWNSHIP: 6N
RANGE: 63W

WELLS RANCH AA26-65HN



WELLS 26-2
(Plugged & Abandoned)
SW1/4NE1/4
1980' FNL (COGCC)
1980' FEL (COGCC)
LAT-40.45335N (COGCC)
LONG-104.40172W (COGCC)
PDOP:N/A
ELEV:4856' (COGCC)

WELLS RANCH
AA26-06
SE1/4NW1/4
1987' FNL
1992' FNL
LAT-40.45932°N
LONG-104.40649°W
PDOP: 2.4
ELEV: 4850'

WELLS RANCH 43-
NE1/4SE1/4
1809' FSL
833' FEL
LAT-40.45520N
LONG-104.41667W
PDOP:1.6
ELEV:4838'

WELLS RANCH AA20
NW1/4SE1/4
1967' FSL
2049' FEL
LAT-40.4558N
LONG-104.40201W
PDOP:2.0
ELEV:4854'

WELLS RANCH USX
AA25-65HN
NW1/4SW1/4
2123' FSL
145' FWL
LAT-40.45598N
LONG-104.39412W
PDOP:2.5

WELLS RANCH USA
AA25-63-1HN
NW1/4SW1/4
2012' FSL
146' FWL
LAT-40.4567N
LONG-104.39412W
PDOP:5.3
ELEV:4781'

WELLS RANCH
26-07X
SW1/4NE1/4
1808' FNL
1947' FEL
LAT-40.45979N
LONG-104.40162W
PDOP:1.0
ELEV:4857'

WELLS RANCH
AA26-12HZB
SW1/4NW1/4
2015, FNL
697, FWL
LAT-40.45928N
LONG-104.41147W
PDOP:3.3

WELLS RANCH AA2
NW1/4SW1/4
1894' FSL
650' FWL
LAT-40.455437N
LONG-104.411347W
PDOP:1.3
ELEV:4839'

WELLS RANCH USA
AA25-66-1HN
NW1/4SW1/4
2164' FSL
142' FWL
LAT-40.45609N
LONG-104.39413W
PDOP:2.3

WELLS RANCH USA
AA25-64-1HN
NW1/4SW1/4
2049' FSL
145' FWL
LAT-40.45577N
LONG-104.39412W
PDOP:1.7
ELEV:4792'

WELLS RANCH
AA26-08
SE1/4NE1/4
2141' FNL
691' FEL
LAT-40.45887N
LONG-104.39711W
PDOP:1.7
ELEV:4826'

WELLS RANCH
AA26-05
SW1/4NW1/4
1985' FNL
660' FWL
LAT-40.45936N
LONG-104.41128W
PDOP: 3.5

WELLS RANCH USX
AA27-08
SE1/4NE1/4
1993, FNL
652, FEL
LAT-40.45936N
LONG-104.41599W
PDOP:1.5

WELLS RANCH AAZ
NE1/4SE1/4
2020 FSL
660 FEL
LAT-40.45570N
LONG-104.39701W
PDOP:2.8
ELEV:4819'

WELLS RANCH USA
AA25-65-1HN
NW1/4SW1/4
2086' FSL
146' FWL
LAT-40.45587N
LONG-104.39412W
PDOP:1.8
ELEV:4792'