

LoanPine field inspection
12/20/2011

2nd to last pond



2nd to last pond





2nd to last pond

20/12/2011 15:56

Last pond; note booms at discharge
coated with oil.



Last pond; edge of pond.



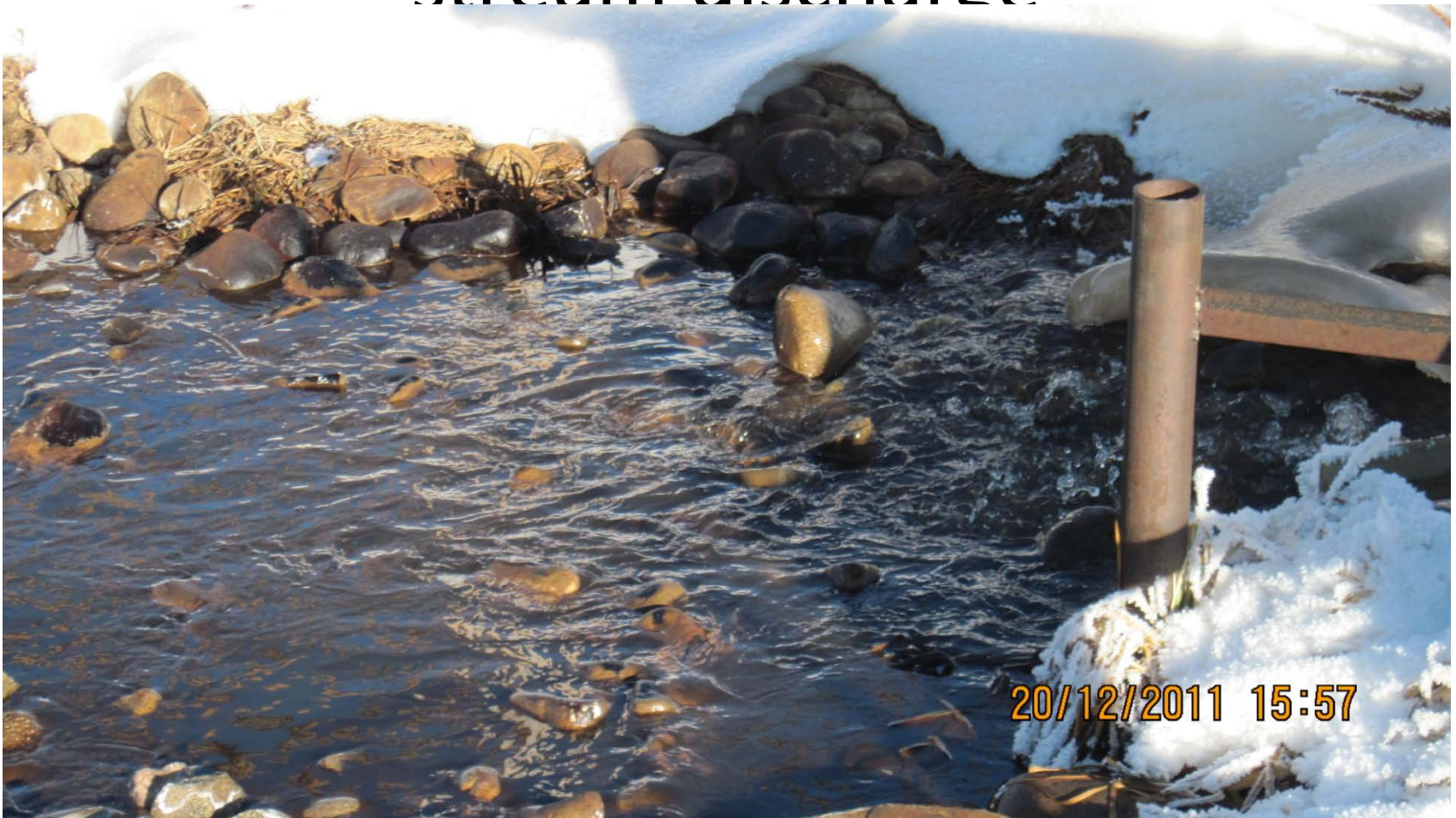
Last pond; oil on surface of water



Last pond; discharge point from pond



Inside pen area that operator uses to
take iron samples, this is beginning of
stream discharge



20/12/2011 15:57

In stream, aprox 15' from sample pen

