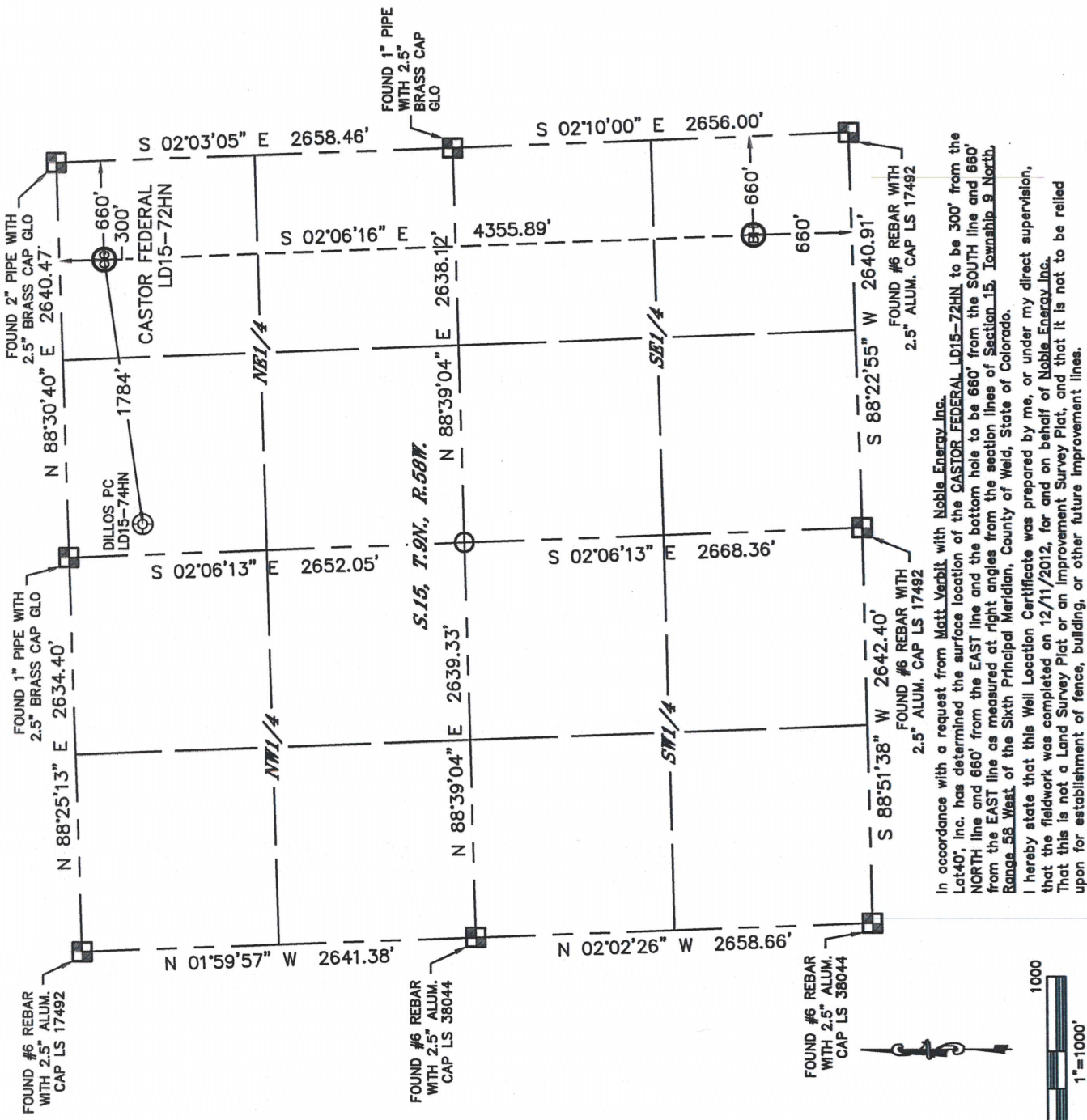


Lat40°, Inc. 1635 Foxtrail Drive, Suite 325 Loveland, CO 970-776-3321

WELL LOCATION CERTIFICATE

SECTION: 15
TOWNSHIP: 9N
RANGE: 58W

THIS MAP DOES NOT REPRESENT A BOUNDARY SURVEY



NOTE:

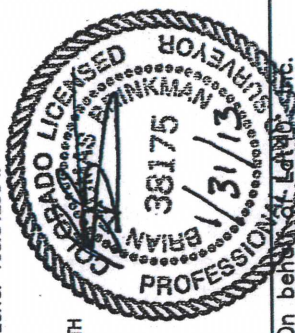
- 1) Bearings shown are Grid Bearings of the Colorado State Plane Coordinate System, North Zone, North American Datum 1983/2007. The lined dimensions as contained herein are based upon the "U.S. Survey Foot." (NAVD 1988 DATUM).
- 2) Ground elevations are based on an observed GPS elevation
- 3) NEAREST EXISTING WELL: DILLOS PC LD15-74HN, 1784'
- 4) IMPROVEMENTS: See LOCATION DRAWING for all viable improvements within 400' of disturbed area.
- 5) SURFACE USE: RANGELAND
- 6) INSTRUMENT OPERATOR: BRIAN ROTTINGHAUS

SURFACE LOCATION

LAT: 40.75786°N
LONG: 103.84318°W
POOP: 1.9
ELEV: 4704'

BOTTOM HOLE
LAT: 40.74581°N
LONG: 103.84290°W

1/4, 1/4: NE1/4E1/4
NEAREST PROPERTY LINE: 300' NORTH



LEGEND

- = ALIQUOT MONUMENT AS DESCRIBED
○ = CALCULATED POSITION

NOTE

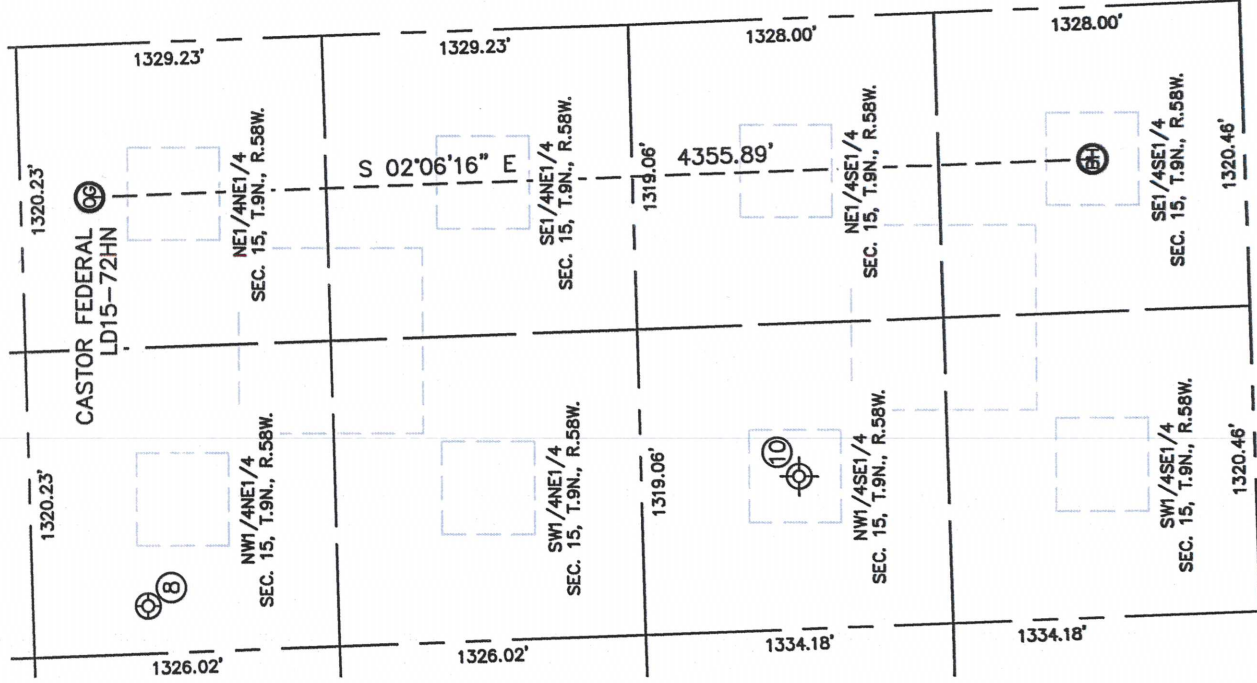
According to Colorado law, you must commence any legal action based upon any defect in this W.L.C. within three years after you discover such defect. In no event, may any action based upon any defect in this survey be commenced more than ten years after the date of the certificate shown hereon. (13-80-105 C.R.S.)

Brian T. Brinkman—On behalf of Lat40, Inc.
Colorado Licensed Professional Land Surveyor No. 38175
DATE: 1/31/2013
PROJECT#: 2012159

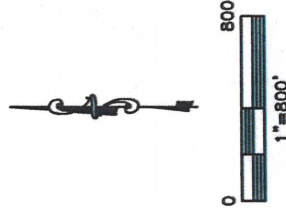
SITE SKETCH

SECTION: 15
TOWNSHIP: 9N
RANGE: 58W

CASTOR FEDERAL LD15-72HN



(8) DILLOS PC LD15-74HN
501' 4NE1/4
NW1/4NE1/4
2435' FEL
LAT-40.75728N
LONG-103.84958W
PDOP: 1.8
ELEV: 4706'



DATE: 1/31/2013
PROJECT#: 2012159