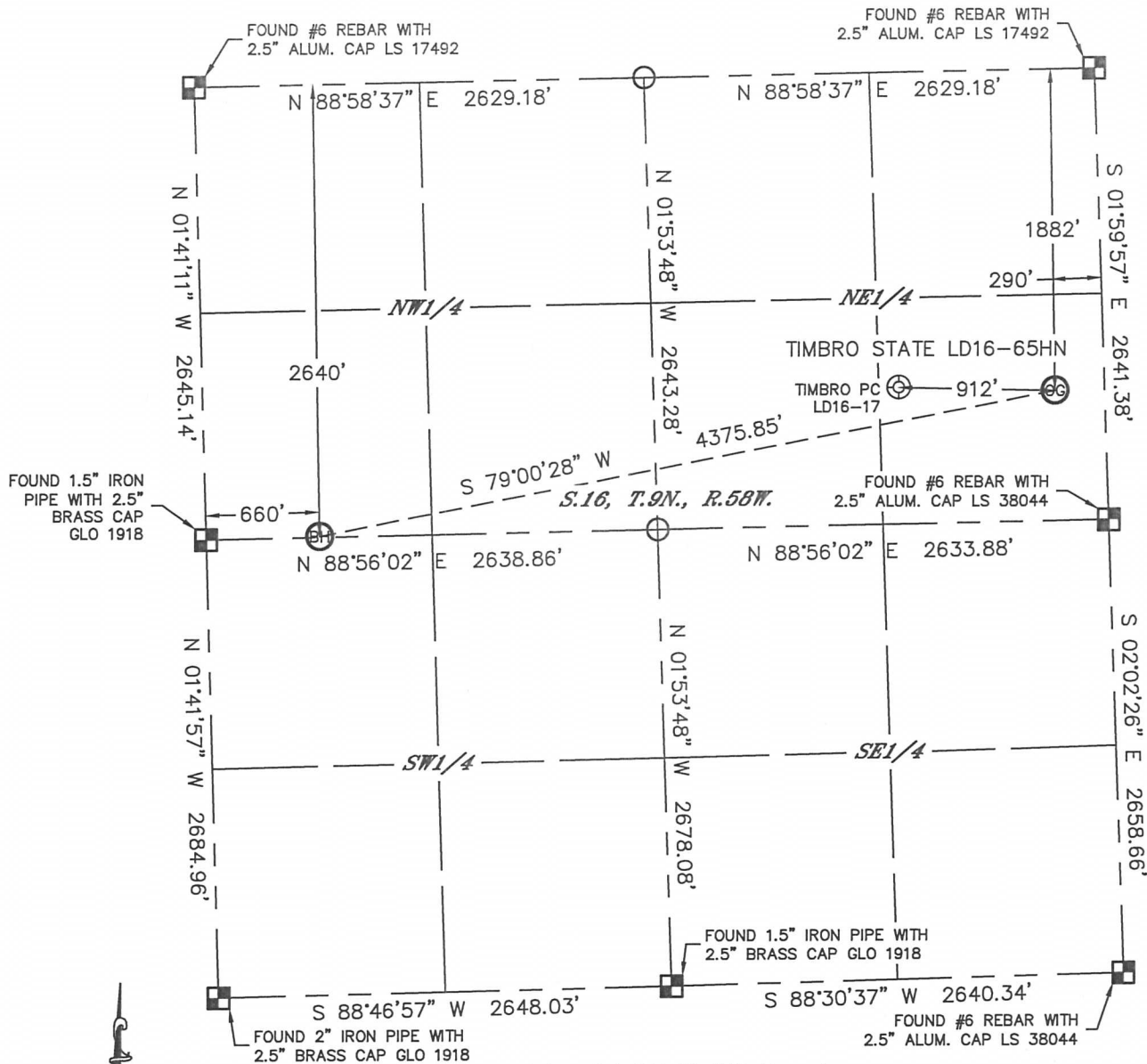


WELL LOCATION CERTIFICATE

THIS MAP DOES NOT REPRESENT A BOUNDARY SURVEY

SECTION: 16
TOWNSHIP: 9N
RANGE: 58W



In accordance with a request from Cody Ball with Noble Energy Inc., Lat40°, Inc. has determined the surface location of the TIMBRO STATE LD16-65HN to be 1882' from the NORTH line and 290' from the EAST line and the bottom hole to be 2640' from the NORTH line and 660' from the WEST line as measured at right angles from the section lines of Section 16, Township 9 North, Range 58 West of the Sixth Principal Meridian, County of Weld, State of Colorado.

I hereby state that this Well Location Certificate was prepared by me, or under my direct supervision, that the fieldwork was completed on 11/28/2012, for and on behalf of Noble Energy Inc. That this is not a Land Survey Plat or an Improvement Survey Plat, and that it is not to be relied upon for establishment of fence, building, or other future improvement lines.

SURFACE LOCATION

LAT: 40.75342N
LONG: 103.86079W
PDOP: 2.7
ELEV: 4759'
1/4,1/4: SE1/4NE1/4
NEAREST PROPERTY LINE: 290' EAST

BOTTOM HOLE

LAT: 40.75134N
LONG: 103.87634W

NOTE:

- 1) Bearings shown are Grid Bearings of the Colorado State Plane Coordinate System, North Zone, North American Datum 1983/2007. The lineal dimensions as contained herein are based upon the "U.S. Survey Foot."
- 2) Ground elevations are based on an observed GPS elevation (NAVD 1988 DATUM).
- 3) NEAREST EXISTING WELL: TIMBRO PC LD16-17, 912'
- 4) IMPROVEMENTS: See LOCATION DRAWING for all visible improvements within 400' of disturbed area.
- 5) SURFACE USE: RANGELAND
- 6) INSTRUMENT OPERATOR: BRIAN ROTTINHAUS

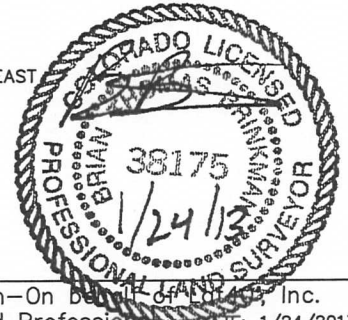
NOTE

According to Colorado law, you must commence any legal action based upon any defect in this W.L.C. within three years after you discover such defect. In no event, may any action based upon any defect in this survey be commenced more than ten years after the date of the certificate shown hereon. (13-80-105 C.R.S.)

LEGEND

- = ALIQUOT MONUMENT AS DESCRIBED
- = CALCULATED POSITION

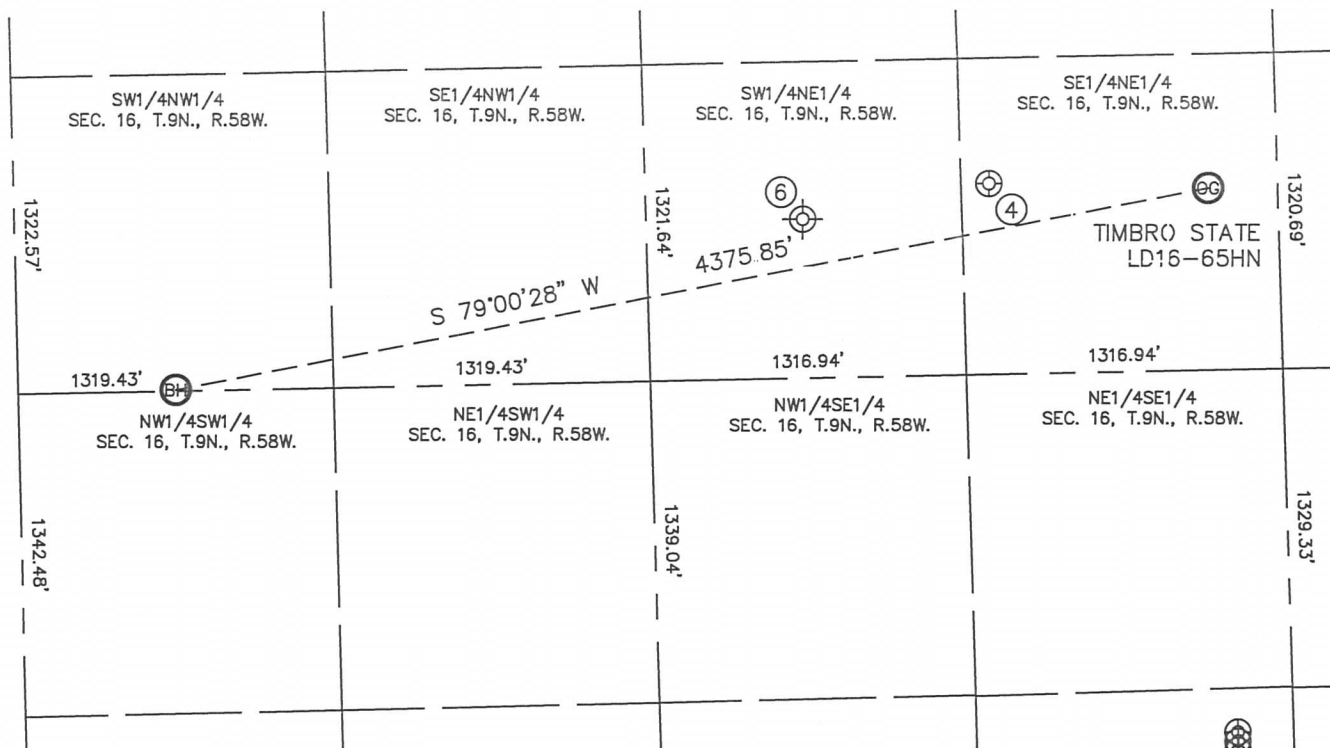
Brian T. Brinkman—On behalf of Lat40°, Inc.
Colorado Licensed Professional Land Surveyor No. 38175
DATE: 1/24/2013
PROJECT#: 2012159



SITE SKETCH

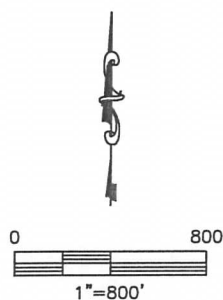
TIMBRO STATE LD16-65HN

SECTION: 16
TOWNSHIP: 9N
RANGE: 58W



④
TIMBRO PC LD16-17
SE1/4NE1/4
1846' FNL
1200' FEL
LAT-40.75352N
LONG-103.86408W
PDOP: 1.7
ELEV: 4776'

⑥
BIBO STATE 1
(Drilled & Abandoned)
SW1/4NE1/4
1980' FNL (COGCC)
1980' FEL (COGCC)
LAT-40.75306N (COGCC)
LONG-103.86690W (COGCC)
PDOP: N/A
ELEV: 4794' (COGCC)



DATE: 1/24/2013
PROJECT#: 2012159