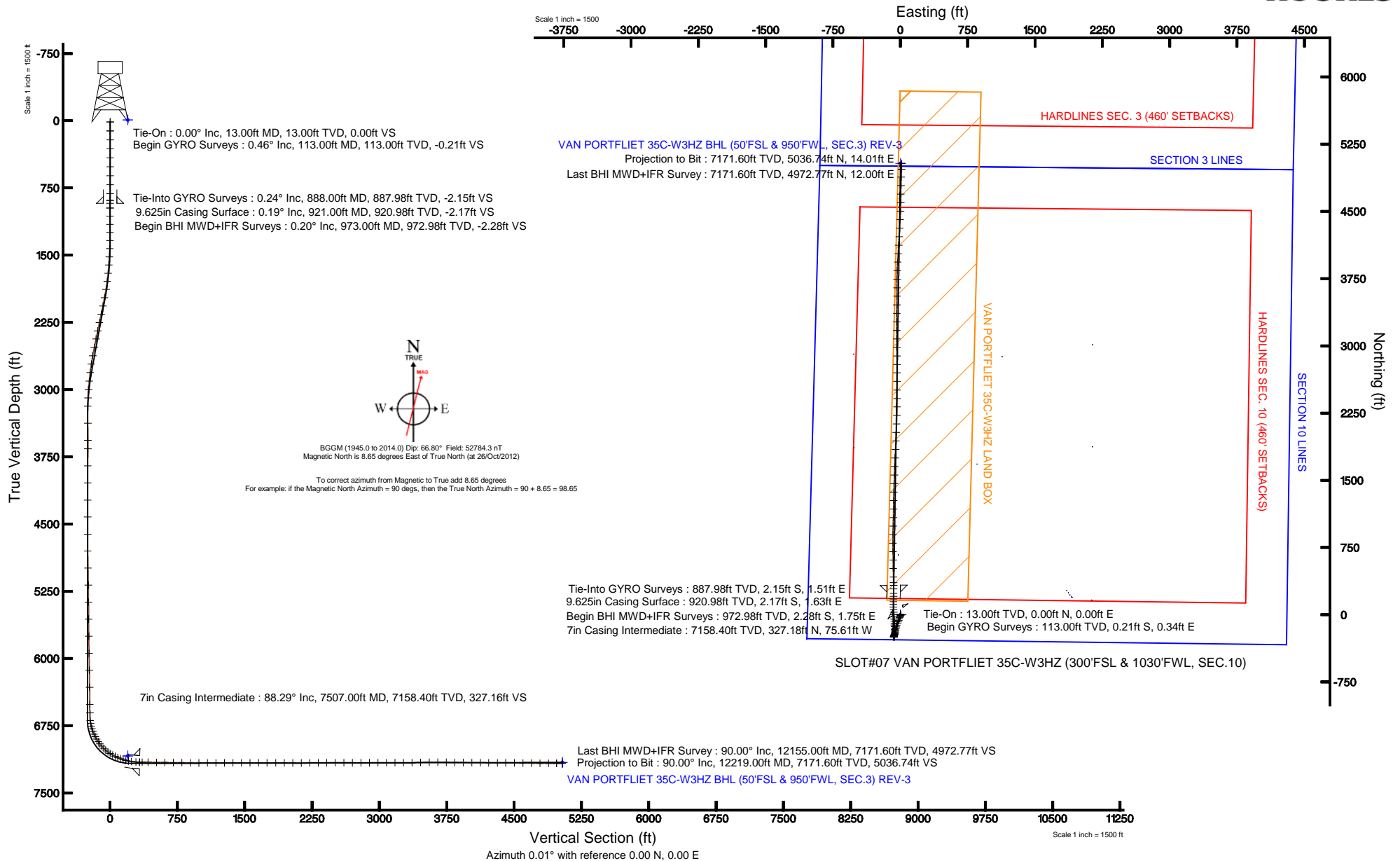


# KERR-MCGEE OIL & GAS ONSHORE LP

Location: COLORADO Slot: SLOT#07 VAN PORTFLIET 35C-W3HZ (300'FSL & 1030'FWL, SEC.10)  
 Field: WELD COUNTY (KERR MCGEE) Well: VAN PORTFLIET 35C-W3HZ  
 Facility: SEC.10-T2N-R65W Wellbore: VAN PORTFLIET 35C-W3HZ PWB

Plot reference wellpath is VAN PORTFLIET 35C-W3HZ (REV-B.0) PWP

True vertical depths are referenced to ENSGIN 138 (RKB)	Grid System: NAD83 / Lambert Colorado SP, Northern Zone (501), US feet
Measured depths are referenced to ENSGN 138 (RKB)	North Reference: True north
ENSGIN 138 (RKB) to Mean Sea Level: 4875 feet	Scale: True distance
Mean Sea Level to Mud line (At Slot: SLOT#07 VAN PORTFLIET 35C-W3HZ (300'FSL & 1030'FWL, SEC.10)): 0 feet	Depths are in feet
Coordinates are in feet referenced to Slot	Created by: auginora on 19/Nov/2012





# Actual Wellpath Report

VAN PORTFLIET 35C-W3HZ AWP

Page 1 of 6



REFERENCE WELLPATH IDENTIFICATION			
Operator	KERR-MCGEE OIL & GAS ONSHORE LP	Slot	SLOT#07 VAN PORTFLIET 35C-W3HZ (300'FSL & 1030'FWL, SEC.10)
Area	COLORADO	Well	VAN PORTFLIET 35C-W3HZ
Field	WELD COUNTY (KERR MCGEE)	Wellbore	VAN PORTFLIET 35C-W3HZ AWB
Facility	SEC.10-T2N-R65W		

REPORT SETUP INFORMATION			
Projection System	NAD83 / Lambert Colorado SP, Northern Zone (501), US feet	Software System	WellArchitect@ 3.0.2
North Reference	True	User	Wilsjef02
Scale	0.999958	Report Generated	4/29/2013 at 10:06:57
Convergence at slot	0.55° East	Database/Source file	WellArchitectDB/VAN_PORTFLIET_35C-W3HZ_AWB.xml

WELLPATH LOCATION						
	Local coordinates		Grid coordinates		Geographic coordinates	
	North[ft]	East[ft]	Easting[US ft]	Northing[US ft]	Latitude	Longitude
Slot Location	-194.83	-1906.38	3235952.16	1297445.24	40°08'48.476"N	104°39'21.406"W
Facility Reference Pt			3237856.50	1297658.34	40°08'50.402"N	104°38'56.857"W
Field Reference Pt			<b>3197771.84</b>	<b>1268891.29</b>	40°04'09.600"N	104°47'36.000"W

WELLPATH DATUM			
Calculation method	<b>Minimum curvature</b>	ENSGIN 138 (RKB) to Facility Vertical Datum	4875.00ft
Horizontal Reference Pt	<b>Slot</b>	ENSGIN 138 (RKB) to Mean Sea Level	4875.00ft
Vertical Reference Pt	<b>ENSGIN 138 (RKB)</b>	ENSGIN 138 (RKB) to Mud Line at Slot (SLOT#07 VAN PORTFLIET 35C-W3HZ (300'FSL & 1030'FWL, SEC.10))	4875.00ft
MD Reference Pt	<b>ENSGIN 138 (RKB)</b>	Section Origin	N 0.00, E 0.00 ft
Field Vertical Reference	<b>Mean Sea Level</b>	Section Azimuth	0.16°



# Actual Wellpath Report

VAN PORTFLIET 35C-W3HZ AWP

Page 2 of 6



## REFERENCE WELLPATH IDENTIFICATION

Operator	KERR-MCGEE OIL & GAS ONSHORE LP	Slot	SLOT#07 VAN PORTFLIET 35C-W3HZ (300'FSL & 1030'FWL, SEC.10)
Area	COLORADO	Well	VAN PORTFLIET 35C-W3HZ
Field	WELD COUNTY (KERR MCGEE)	Wellbore	VAN PORTFLIET 35C-W3HZ AWB
Facility	SEC.10-T2N-R65W		

## WELLPATH DATA (131 stations) † = interpolated/extrapolated station

MD [ft]	Inclination [°]	Azimuth [°]	TVD [ft]	Vert Sect [ft]	North [ft]	East [ft]	Latitude	Longitude	DLS [°/100ft]	Comments
0.00†	0.000	121.760	0.00	0.00	0.00	0.00	40°08'48.476"N	104°39'21.406"W	0.00	
13.00	0.000	121.760	13.00	0.00	0.00	0.00	40°08'48.476"N	104°39'21.406"W	0.00	Tie-On
113.00	0.460	121.760	113.00	-0.21	-0.21	0.34	40°08'48.474"N	104°39'21.402"W	0.46	Begin GYRO Surveys
213.00	0.520	132.650	213.00	-0.73	-0.73	1.02	40°08'48.469"N	104°39'21.393"W	0.11	
313.00	0.470	137.070	312.99	-1.33	-1.34	1.63	40°08'48.463"N	104°39'21.385"W	0.06	
413.00	0.130	286.730	412.99	-1.60	-1.61	1.80	40°08'48.460"N	104°39'21.383"W	0.59	
513.00	0.250	303.690	512.99	-1.45	-1.45	1.51	40°08'48.462"N	104°39'21.387"W	0.13	
613.00	0.250	295.790	612.99	-1.23	-1.24	1.13	40°08'48.464"N	104°39'21.391"W	0.03	
713.00	0.360	191.440	712.99	-1.45	-1.45	0.87	40°08'48.462"N	104°39'21.395"W	0.49	
813.00	0.440	126.090	812.99	-1.98	-1.98	1.12	40°08'48.456"N	104°39'21.392"W	0.44	
888.00	0.240	88.430	887.98	-2.14	-2.15	1.51	40°08'48.455"N	104°39'21.387"W	0.39	Tie-Into GYRO Surveys
973.00	0.200	156.400	972.98	-2.27	-2.28	1.75	40°08'48.453"N	104°39'21.383"W	0.29	Begin BHI MWD+IFR Surveys
1064.00	0.400	148.900	1063.98	-2.69	-2.70	1.98	40°08'48.449"N	104°39'21.381"W	0.22	
1155.00	0.400	146.700	1154.98	-3.23	-3.23	2.31	40°08'48.444"N	104°39'21.376"W	0.02	
1246.00	0.600	120.000	1245.98	-3.73	-3.74	2.90	40°08'48.439"N	104°39'21.369"W	0.33	
1337.00	0.500	109.900	1336.97	-4.10	-4.11	3.69	40°08'48.435"N	104°39'21.359"W	0.15	
1427.00	1.900	185.800	1426.95	-5.72	-5.73	3.91	40°08'48.419"N	104°39'21.356"W	2.05	
1518.00	3.200	202.700	1517.86	-9.57	-9.57	2.77	40°08'48.381"N	104°39'21.370"W	1.64	
1610.00	4.500	204.900	1609.65	-15.22	-15.22	0.26	40°08'48.326"N	104°39'21.403"W	1.42	
1701.00	6.400	204.900	1700.24	-23.06	-23.06	-3.38	40°08'48.248"N	104°39'21.449"W	2.09	
1792.00	8.000	202.700	1790.52	-33.52	-33.50	-7.96	40°08'48.145"N	104°39'21.508"W	1.78	
1884.00	10.000	198.300	1881.38	-47.03	-46.99	-12.93	40°08'48.012"N	104°39'21.573"W	2.30	
1978.00	11.600	200.400	1973.71	-63.65	-63.60	-18.79	40°08'47.848"N	104°39'21.648"W	1.75	
2072.00	12.200	201.300	2065.69	-81.78	-81.71	-25.69	40°08'47.669"N	104°39'21.737"W	0.67	
2168.00	12.400	201.600	2159.49	-100.84	-100.74	-33.17	40°08'47.480"N	104°39'21.833"W	0.22	
2262.00	12.600	194.800	2251.27	-120.15	-120.04	-39.51	40°08'47.290"N	104°39'21.915"W	1.58	
2357.00	11.900	193.800	2344.10	-139.69	-139.57	-44.49	40°08'47.097"N	104°39'21.979"W	0.77	
2450.00	11.900	193.500	2435.11	-158.34	-158.21	-49.02	40°08'46.913"N	104°39'22.037"W	0.07	
2545.00	11.600	194.200	2528.11	-177.14	-176.99	-53.65	40°08'46.727"N	104°39'22.097"W	0.35	
2640.00	10.600	194.200	2621.34	-194.88	-194.72	-58.13	40°08'46.552"N	104°39'22.155"W	1.05	
2735.00	9.100	198.500	2714.93	-210.49	-210.32	-62.66	40°08'46.398"N	104°39'22.213"W	1.76	
2830.00	7.500	201.200	2808.94	-223.41	-223.22	-67.29	40°08'46.270"N	104°39'22.272"W	1.73	
2926.00	6.000	198.300	2904.27	-234.03	-233.83	-71.13	40°08'46.165"N	104°39'22.322"W	1.60	
3020.00	4.600	192.400	2997.87	-242.38	-242.17	-73.48	40°08'46.083"N	104°39'22.352"W	1.60	
3114.00	2.400	167.400	3091.69	-247.98	-247.78	-73.86	40°08'46.027"N	104°39'22.357"W	2.80	
3208.00	0.400	108.900	3185.66	-250.01	-249.80	-73.12	40°08'46.007"N	104°39'22.348"W	2.36	
3398.00	0.500	60.400	3375.65	-249.81	-249.61	-71.77	40°08'46.009"N	104°39'22.330"W	0.20	
3588.00	0.700	90.800	3565.64	-249.41	-249.22	-69.89	40°08'46.013"N	104°39'22.306"W	0.19	
3683.00	0.400	275.800	3660.64	-249.38	-249.19	-69.64	40°08'46.013"N	104°39'22.303"W	1.16	
3873.00	0.600	189.500	3850.64	-250.30	-250.11	-70.46	40°08'46.004"N	104°39'22.313"W	0.37	
4064.00	0.200	147.100	4041.63	-251.57	-251.37	-70.45	40°08'45.992"N	104°39'22.313"W	0.25	
4255.00	0.600	96.200	4232.63	-251.95	-251.76	-69.27	40°08'45.988"N	104°39'22.298"W	0.26	
4445.00	0.500	286.900	4422.62	-251.82	-251.63	-69.08	40°08'45.989"N	104°39'22.296"W	0.58	
4636.00	0.800	271.600	4613.61	-251.54	-251.35	-71.21	40°08'45.992"N	104°39'22.323"W	0.18	
4824.00	0.800	333.200	4801.60	-250.34	-250.14	-73.11	40°08'46.004"N	104°39'22.347"W	0.44	



# Actual Wellpath Report

VAN PORTFLIET 35C-W3HZ AWP

Page 3 of 6



REFERENCE WELLPATH IDENTIFICATION				
Operator	KERR-MCGEE OIL & GAS ONSHORE LP		Slot	SLOT#07 VAN PORTFLIET 35C-W3HZ (300'FSL & 1030'FWL, SEC.10)
Area	COLORADO		Well	VAN PORTFLIET 35C-W3HZ
Field	WELD COUNTY (KERR MCGEE)		Wellbore	VAN PORTFLIET 35C-W3HZ AWB
Facility	SEC.10-T2N-R65W			

WELLPATH DATA (131 stations) † = interpolated/extrapolated station										
MD [ft]	Inclination [°]	Azimuth [°]	TVD [ft]	Vert Sect [ft]	North [ft]	East [ft]	Latitude	Longitude	DLS [°/100ft]	Comments
5014.00	1.000	7.800	4991.57	-247.52	-247.31	-73.48	40°08'46.032"N	104°39'22.352"W	0.30	
5204.00	0.900	22.500	5181.55	-244.49	-244.29	-72.69	40°08'46.062"N	104°39'22.342"W	0.14	
5394.00	0.600	36.300	5371.53	-242.31	-242.11	-71.53	40°08'46.083"N	104°39'22.327"W	0.18	
5584.00	0.500	47.500	5561.52	-240.94	-240.75	-70.33	40°08'46.097"N	104°39'22.317"W	0.08	
5775.00	0.900	9.400	5752.51	-238.90	-238.71	-69.47	40°08'46.117"N	104°39'22.301"W	0.31	
5965.00	1.100	350.800	5942.48	-235.63	-235.43	-69.52	40°08'46.149"N	104°39'22.301"W	0.20	
6155.00	0.900	27.200	6132.45	-232.50	-232.31	-69.13	40°08'46.180"N	104°39'22.296"W	0.34	
6346.00	1.100	42.500	6323.42	-229.81	-229.62	-67.20	40°08'46.207"N	104°39'22.271"W	0.17	
6537.00	1.200	67.100	6514.39	-227.67	-227.49	-64.12	40°08'46.228"N	104°39'22.232"W	0.26	
6631.00	1.200	65.300	6608.37	-226.87	-226.70	-62.32	40°08'46.236"N	104°39'22.208"W	0.04	
6717.00	4.800	0.900	6694.25	-222.89	-222.72	-61.44	40°08'46.275"N	104°39'22.197"W	5.13	
6749.00	9.700	0.100	6725.98	-218.85	-218.68	-61.42	40°08'46.315"N	104°39'22.197"W	15.32	
6780.00	13.700	359.000	6756.33	-212.57	-212.40	-61.48	40°08'46.377"N	104°39'22.198"W	12.92	
6812.00	18.200	357.900	6787.09	-203.78	-203.61	-61.73	40°08'46.464"N	104°39'22.201"W	14.09	
6843.00	22.100	359.000	6816.19	-193.11	-192.94	-62.01	40°08'46.569"N	104°39'22.204"W	12.64	
6875.00	24.800	358.000	6845.55	-180.38	-180.21	-62.35	40°08'46.695"N	104°39'22.209"W	8.53	
6907.00	28.300	355.900	6874.17	-166.11	-165.93	-63.12	40°08'46.836"N	104°39'22.219"W	11.32	
6939.00	30.700	356.000	6902.02	-150.39	-150.21	-64.24	40°08'46.992"N	104°39'22.233"W	7.50	
6970.00	33.000	356.000	6928.35	-134.08	-133.90	-65.38	40°08'47.153"N	104°39'22.248"W	7.42	
7002.00	36.400	357.700	6954.65	-115.90	-115.71	-66.37	40°08'47.333"N	104°39'22.261"W	11.05	
7034.00	40.200	358.600	6979.76	-96.08	-95.89	-67.00	40°08'47.528"N	104°39'22.269"W	12.00	
7066.00	44.200	357.600	7003.46	-74.60	-74.41	-67.72	40°08'47.741"N	104°39'22.283"W	12.67	
7097.00	48.500	357.100	7024.85	-52.20	-52.01	-68.76	40°08'47.962"N	104°39'22.291"W	13.92	
7129.00	53.900	356.400	7044.90	-27.32	-27.12	-70.18	40°08'48.208"N	104°39'22.310"W	16.96	
7161.00	58.900	356.300	7062.60	-0.73	-0.53	-71.88	40°08'48.471"N	104°39'22.332"W	15.63	
7193.00	61.700	355.800	7078.45	26.99	27.19	-73.79	40°08'48.745"N	104°39'22.356"W	8.85	
7225.00	63.600	357.000	7093.16	55.35	55.56	-75.57	40°08'49.025"N	104°39'22.379"W	6.81	
7257.00	65.900	357.900	7106.81	84.26	84.47	-76.86	40°08'49.311"N	104°39'22.396"W	7.62	
7288.00	68.200	359.300	7118.89	112.79	113.01	-77.55	40°08'49.593"N	104°39'22.405"W	8.51	
7320.00	71.700	0.900	7129.86	142.84	143.06	-77.50	40°08'49.890"N	104°39'22.404"W	11.90	
7352.00	76.400	1.200	7138.65	173.60	173.81	-76.93	40°08'50.194"N	104°39'22.397"W	14.72	
7384.00	78.800	1.400	7145.53	204.84	205.06	-76.22	40°08'50.502"N	104°39'22.388"W	7.52	
7416.00	80.700	0.900	7151.22	236.33	236.54	-75.59	40°08'50.813"N	104°39'22.379"W	6.13	
7467.00	86.900	359.800	7156.72	287.00	287.21	-75.28	40°08'51.314"N	104°39'22.375"W	12.34	
7507.00†	88.291	359.278	7158.40	326.96	327.18	-75.61	40°08'51.709"N	104°39'22.380"W	3.71	7" Casing Point
7536.00	89.300	358.900	7159.01	355.95	356.17	-76.07	40°08'51.996"N	104°39'22.386"W	3.71	
7600.00	89.200	358.600	7159.85	419.93	420.14	-77.46	40°08'52.628"N	104°39'22.404"W	0.49	
7695.00	89.100	359.500	7161.26	514.90	515.12	-79.04	40°08'53.566"N	104°39'22.424"W	0.95	
7789.00	89.400	359.600	7162.49	608.89	609.11	-79.78	40°08'54.495"N	104°39'22.433"W	0.34	
7883.00	89.300	357.700	7163.56	702.84	703.07	-81.99	40°08'55.424"N	104°39'22.462"W	2.02	
7977.00	88.900	0.600	7165.03	796.81	797.04	-83.38	40°08'56.352"N	104°39'22.480"W	3.11	
8073.00	88.900	0.600	7166.88	892.79	893.02	-82.38	40°08'57.301"N	104°39'22.467"W	0.00	
8168.00	90.200	1.500	7167.62	987.77	988.00	-80.64	40°08'58.239"N	104°39'22.444"W	1.66	
8263.00	90.400	1.500	7167.12	1082.74	1082.96	-78.15	40°08'59.178"N	104°39'22.412"W	0.21	
8358.00	90.200	1.700	7166.63	1177.71	1177.92	-75.50	40°09'00.116"N	104°39'22.378"W	0.30	



# Actual Wellpath Report

VAN PORTFLIET 35C-W3HZ AWP

Page 4 of 6



REFERENCE WELLPATH IDENTIFICATION				
Operator	KERR-MCGEE OIL & GAS ONSHORE LP		Slot	SLOT#07 VAN PORTFLIET 35C-W3HZ (300'FSL & 1030'FWL, SEC.10)
Area	COLORADO		Well	VAN PORTFLIET 35C-W3HZ
Field	WELD COUNTY (KERR MCGEE)		Wellbore	VAN PORTFLIET 35C-W3HZ AWP
Facility	SEC.10-T2N-R65W			

WELLPATH DATA (131 stations)										
MD [ft]	Inclination [°]	Azimuth [°]	TVD [ft]	Vert Sect [ft]	North [ft]	East [ft]	Latitude	Longitude	DLS [°/100ft]	Comments
8453.00	90.200	0.000	7166.30	1272.70	1272.91	-74.09	40°09'01.055"N	104°39'22.360"W	1.79	
8548.00	89.800	2.300	7166.30	1367.68	1367.88	-72.18	40°09'01.994"N	104°39'22.336"W	2.46	
8642.00	89.700	2.100	7166.71	1461.62	1461.81	-68.58	40°09'02.922"N	104°39'22.289"W	0.24	
8738.00	89.700	1.300	7167.21	1557.58	1557.77	-65.73	40°09'03.870"N	104°39'22.252"W	0.83	
8833.00	89.900	1.700	7167.54	1652.55	1652.74	-63.24	40°09'04.808"N	104°39'22.220"W	0.47	
8928.00	90.200	3.700	7167.46	1747.45	1747.62	-58.77	40°09'05.746"N	104°39'22.163"W	2.13	
9024.00	90.000	2.300	7167.29	1843.33	1843.49	-53.74	40°09'06.693"N	104°39'22.098"W	1.47	
9119.00	89.800	2.300	7167.46	1938.27	1938.41	-49.93	40°09'07.632"N	104°39'22.049"W	0.21	
9214.00	89.700	2.400	7167.87	2033.20	2033.33	-46.03	40°09'08.570"N	104°39'21.999"W	0.15	
9309.00	90.200	2.200	7167.95	2128.13	2128.26	-42.22	40°09'09.508"N	104°39'21.950"W	0.57	
9405.00	91.000	1.900	7166.95	2224.07	2224.19	-38.79	40°09'10.456"N	104°39'21.906"W	0.89	
9499.00	90.300	0.600	7165.88	2318.05	2318.16	-36.74	40°09'11.384"N	104°39'21.879"W	1.57	
9593.00	90.300	359.600	7165.39	2412.04	2412.16	-36.57	40°09'12.313"N	104°39'21.877"W	1.06	
9688.00	90.200	359.700	7164.97	2507.04	2507.15	-37.15	40°09'13.252"N	104°39'21.884"W	0.15	
9784.00	89.800	0.100	7164.97	2603.04	2603.15	-37.32	40°09'14.201"N	104°39'21.887"W	0.59	
9879.00	89.700	0.500	7165.39	2698.04	2698.15	-36.82	40°09'15.139"N	104°39'21.880"W	0.43	
9974.00	90.100	359.100	7165.55	2793.03	2793.15	-37.16	40°09'16.078"N	104°39'21.885"W	1.53	
10069.00	90.200	359.600	7165.31	2888.02	2888.14	-38.23	40°09'17.017"N	104°39'21.898"W	0.54	
10164.00	90.100	359.600	7165.06	2983.02	2983.14	-38.90	40°09'17.956"N	104°39'21.907"W	0.11	
10259.00	89.900	0.300	7165.06	3078.02	3078.14	-38.98	40°09'18.894"N	104°39'21.908"W	0.77	
10354.00	90.400	359.400	7164.81	3173.01	3173.13	-39.23	40°09'19.833"N	104°39'21.911"W	1.08	
10449.00	90.200	359.800	7164.31	3268.01	3268.13	-39.89	40°09'20.772"N	104°39'21.920"W	0.47	
10544.00	91.000	0.500	7163.32	3363.00	3363.12	-39.64	40°09'21.711"N	104°39'21.917"W	1.12	
10639.00	91.800	1.000	7161.00	3457.97	3458.09	-38.40	40°09'22.649"N	104°39'21.901"W	0.99	
10735.00	90.600	0.300	7158.98	3553.94	3554.06	-37.31	40°09'23.597"N	104°39'21.887"W	1.45	
10830.00	89.400	0.300	7158.98	3648.94	3649.05	-36.81	40°09'24.536"N	104°39'21.880"W	1.26	
10925.00	89.000	0.400	7160.31	3743.93	3744.04	-36.23	40°09'25.475"N	104°39'21.873"W	0.43	
11021.00	89.600	1.900	7161.48	3839.90	3840.01	-34.31	40°09'26.423"N	104°39'21.848"W	1.68	
11116.00	89.000	2.900	7162.64	3934.82	3934.92	-30.33	40°09'27.361"N	104°39'21.797"W	1.23	
11210.00	89.300	3.600	7164.04	4028.67	4028.76	-25.00	40°09'28.288"N	104°39'21.728"W	0.81	
11305.00	89.700	3.800	7164.87	4123.49	4123.56	-18.87	40°09'29.225"N	104°39'21.649"W	0.47	
11399.00	88.800	3.600	7166.10	4217.30	4217.35	-12.80	40°09'30.152"N	104°39'21.571"W	0.98	
11495.00	91.100	3.100	7166.18	4313.14	4313.18	-7.19	40°09'31.099"N	104°39'21.499"W	2.45	
11590.00	89.500	3.200	7165.68	4408.01	4408.03	-1.97	40°09'32.036"N	104°39'21.431"W	1.69	
11686.00	88.900	1.500	7167.03	4503.93	4503.94	1.96	40°09'32.984"N	104°39'21.381"W	1.88	
11781.00	89.000	1.800	7168.77	4598.88	4598.88	4.70	40°09'33.922"N	104°39'21.346"W	0.33	
11875.00	89.100	359.700	7170.32	4692.86	4692.86	5.93	40°09'34.851"N	104°39'21.330"W	2.24	
11971.00	89.500	1.800	7171.50	4788.84	4788.84	7.18	40°09'35.800"N	104°39'21.313"W	2.23	
12067.00	90.200	1.200	7171.75	4884.81	4884.80	9.70	40°09'36.748"N	104°39'21.281"W	0.96	
12155.00	90.000	1.800	7171.60	4972.78	4972.77	12.00	40°09'37.617"N	104°39'21.251"W	0.72	Last BHI MWD+IFR Survey
12219.00	90.000	1.800	7171.60	5036.76	5036.74	14.01	40°09'38.249"N	104°39'21.226"W	0.00	Projection to Bit



# Actual Wellpath Report

VAN PORTFLIET 35C-W3HZ AWP

Page 5 of 6



## REFERENCE WELLPATH IDENTIFICATION

Operator	KERR-MCGEE OIL & GAS ONSHORE LP	Slot	SLOT#07 VAN PORTFLIET 35C-W3HZ (300'FSL & 1030'FWL, SEC.10)
Area	COLORADO	Well	VAN PORTFLIET 35C-W3HZ
Field	WELD COUNTY (KERR MCGEE)	Wellbore	VAN PORTFLIET 35C-W3HZ AWB
Facility	SEC.10-T2N-R65W		

## HOLE & CASING SECTIONS - Ref Wellbore: VAN PORTFLIET 35C-W3HZ AWB Ref Wellpath: VAN PORTFLIET 35C-W3HZ AWP

String/Diameter	Start MD [ft]	End MD [ft]	Interval [ft]	Start TVD [ft]	End TVD [ft]	Start N/S [ft]	Start E/W [ft]	End N/S [ft]	End E/W [ft]
13.5in Open Hole	13.00	921.00	908.00	13.00	920.98	0.00	0.00	-2.17	1.63
9.625in Casing Surface	13.00	921.00	908.00	13.00	920.98	0.00	0.00	-2.17	1.63
8.75in Open Hole	921.00	7520.00	6599.00	920.98	7158.74	-2.17	1.63	340.17	-75.79
7in Casing Intermediate	13.00	7507.00	7494.00	13.00	7158.40	0.00	0.00	327.18	-75.61
6.125in Open Hole	7507.00	12219.00	4712.00	7158.40	7171.60	327.18	-75.61	5036.74	14.01

## TARGETS

Name	MD [ft]	TVD [ft]	North [ft]	East [ft]	Grid East [US ft]	Grid North [US ft]	Latitude	Longitude	Shape
COOK 4 HZ PAD SECTION 10 LINES		6930.00	195.01	1906.35	3237856.49	1297658.38	40°08'50.402"N	104°38'56.857"W	polygon
COOK 4 HZ PAD SECTION 3 LINES		6930.00	195.01	1906.35	3237856.49	1297658.38	40°08'50.402"N	104°38'56.857"W	polygon
VAN PORTFLIET 35C-W3HZ BHL (50'FSL & 1050'FWL, SEC.3) REV-2		7162.00	5037.73	111.27	3236015.47	1302483.58	40°09'38.259"N	104°39'19.973"W	point
VAN PORTFLIET 35C-W3HZ BHL (50'FSL & 950'FWL, SEC.3) REV-3		7162.00	5037.73	1.27	3235905.48	1302482.53	40°09'38.259"N	104°39'21.390"W	point
VAN PORTFLIET 35C-W3HZ BHL ON PLAT (460'FSL & 1050'FWL, SEC.3) REV-1		7162.00	5447.75	111.26	3236011.55	1302893.56	40°09'42.311"N	104°39'19.973"W	point
COOK 4 HZ PAD HARDLINES SEC. 10 (460' SETBACKS)		7200.00	195.01	1906.35	3237856.49	1297658.38	40°08'50.402"N	104°38'56.857"W	polygon
COOK 4 HZ PAD HARDLINES SEC. 3 (460' SETBACKS)		7200.00	195.01	1906.35	3237856.49	1297658.38	40°08'50.402"N	104°38'56.857"W	polygon
VAN PORTFLIET 35C-W3HZ LAND BOX		7200.00	0.00	0.00	3235952.16	1297445.24	40°08'48.476"N	104°39'21.406"W	polygon

## WELLPATH COMPOSITION - Ref Wellbore: VAN PORTFLIET 35C-W3HZ AWB Ref Wellpath: VAN PORTFLIET 35C-W3HZ AWP

Start MD [ft]	End MD [ft]	Positional Uncertainty Model	Log Name/Comment	Wellbore
13.00	888.00	Generic gyro - continuous (Standard)	GYRODATA SURVEYS <113-888>	VAN PORTFLIET 35C-W3HZ AWB
888.00	7467.00	NaviTrak (MAGCORR,IFR)	BHI MWD+IFR SURVEYS 8 3/4" HOLE <973-7467>	VAN PORTFLIET 35C-W3HZ AWB
7467.00	12155.00	OnTrak (MAGCORR,IFR)	BHI MWD+IFR SURVEYS 6 1/8" HOLE <7536-12155>	VAN PORTFLIET 35C-W3HZ AWB
12155.00	12219.00	Blind Drilling (std)	Projection to bit	VAN PORTFLIET 35C-W3HZ AWB



# Actual Wellpath Report

VAN PORTFLIET 35C-W3HZ AWP

Page 6 of 6



REFERENCE WELLPATH IDENTIFICATION			
Operator	KERR-MCGEE OIL & GAS ONSHORE LP	Slot	SLOT#07 VAN PORTFLIET 35C-W3HZ (300'FSL & 1030'FWL, SEC.10)
Area	COLORADO	Well	VAN PORTFLIET 35C-W3HZ
Field	WELD COUNTY (KERR MCGEE)	Wellbore	VAN PORTFLIET 35C-W3HZ AWB
Facility	SEC.10-T2N-R65W		

WELLPATH COMMENTS					
MD [ft]	Inclination [°]	Azimuth [°]	TVD [ft]	Comment	
13.00	0.000	121.760	13.00	Tie-On	
113.00	0.460	121.760	113.00	Begin GYRO Surveys	
888.00	0.240	88.430	887.98	Tie-Into GYRO Surveys	
973.00	0.200	156.400	972.98	Begin BHI MWD+IFR Surveys	
7507.00	88.291	359.278	7158.40	7" Casing Point	
12155.00	90.000	1.800	7171.60	Last BHI MWD+IFR Survey	
12219.00	90.000	1.800	7171.60	Projection to Bit	