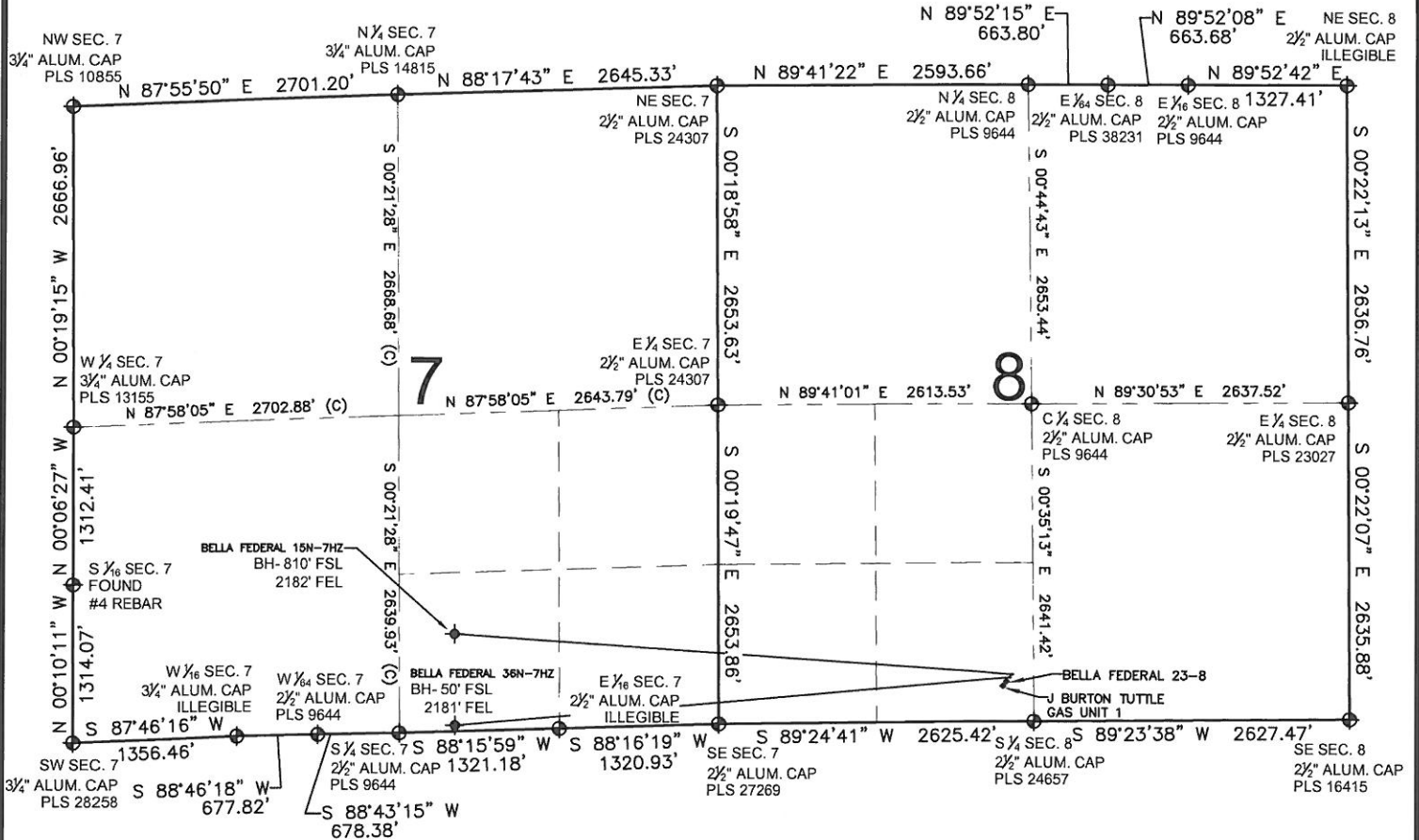


# BELLA FEDERAL 36N-7HZ MULTI-WELL PLAN

SECTION 8, TOWNSHIP 3 NORTH, RANGE 66 WEST, 6TH P.M.



## LEGEND

- ◆ = EXISTING MONUMENT
- = PROPOSED WELL
- ◻ = BOTTOM HOLE
- BH = BOTTOM HOLE
- ◆ = EXISTING WELL

## NOTES:

- BELLA FEDERAL 15N-7HZ TO BE AT 393' FSL, 2447' FWL. BOTTOM HOLE AT 810' FSL & 2182' FEL.
- BELLA FEDERAL 36N-7HZ TO BE AT 369' FSL, 2428' FWL. BOTTOM HOLE AT 50' FSL & 2181' FEL.
- BELLA FEDERAL 23-8 IS 345' FSL, 2410' FWL.
- J BURTON TUTTLE GAS UNIT 1 IS 306' FSL, 2380' FWL.

PREPARED BY:



KERR-MCGEE OIL & GAS ONSHORE LP

FIELD DATE:  
11-29-12

DRAWING DATE:  
04-05-13

SURFACE LOCATION:

SE 1/4 SW 1/4, SEC. 8, T3N, R66W, 6TH P.M.  
WELD COUNTY, COLORADO