

NOBLE ENERGY INC.
CASE 01
NENE 17-1S-66W
990' FNL & 990' FEL
Weld County, Colorado
Wattenberg
CURRENT WELLBORE SCHEMATIC
with PROPOSED P&A
4/24/2013

API: 05-001-06790
COGCC #

GL Elev: 5033
KB Elev: 5043

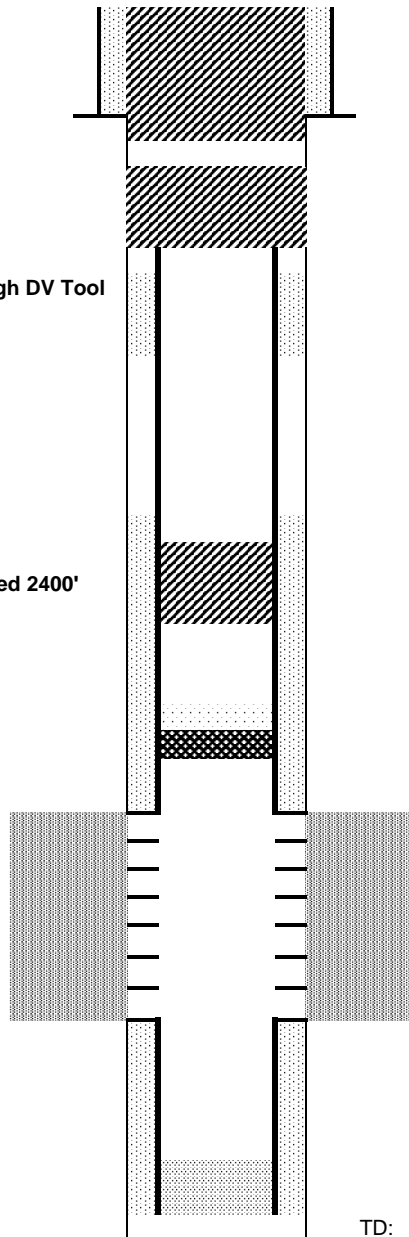
Spud Date: 1/27/1974

Surface Casing :
8 5/8" 24# @ 113'
Cement: 110 sx
TOC: Surface

250 sx through DV Tool
@ 1207'

TOC Estimated 2400'

Production Casing :
4 1/2" 11.60# @ 8237
Cement: 250 sx
TD: 2/12/1974



Cut surface casing off 6'-8' below surface.

Pump approx 125 sx shoe plug @ 300
Will bring cement to surface.

Cut and pull csg ~1000' (Depending on CBL)
100 sx Stub Plug

20 sx Plug @ 3000'

CIBP @ 8004' w/ 2 sx cement on top

J Sand Perforations 8104' - 8134

TD: 8237