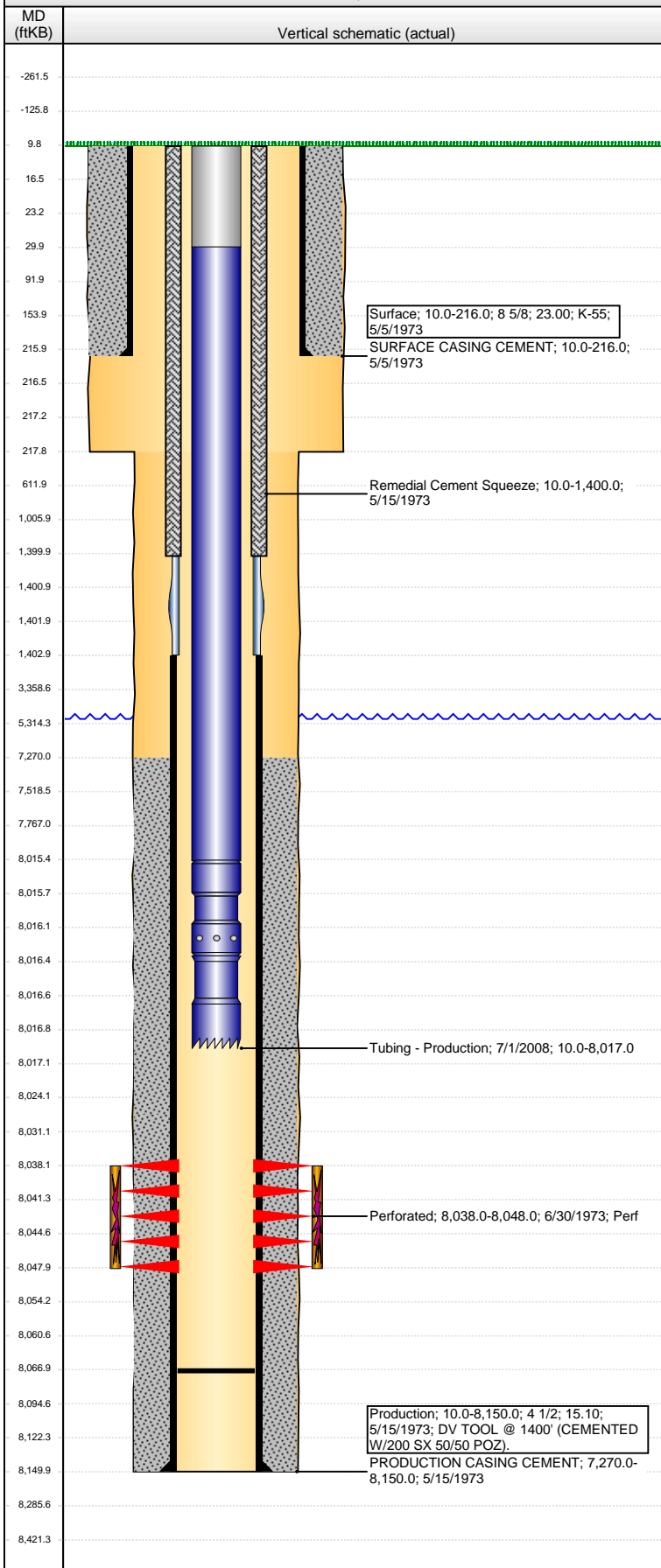


Well Name: HECKENDORF 01

VERTICAL - ORIGINAL HOLE, 4/25/2013 11:39:53 AM



Well Header

API	Business Unit	District	Well Config
05-001-06670	WATTENBERG	15	VERTICAL
Original KB Elevation (ft)	KB - GL / MSL (ftKB)	Spud Date	P & A Date
5,060.00	10.00	5/4/1973	
Comment			
DV tool @ 1400' w/200x			
Directions To Well			

Congressional Location

Quarter 1	Quarter 2	Quarter 3	Quarter 4	Section	Township	Twnshp N...	Range	Rng E/W Dir
		NE	NE	14	1	S	66	W

Bottom Hole Location

North-South Distance (ft)	From N or S Line	East-West Distance (ft)	From E or W Line

Plug Back Total Depths

Date	Depth (ftKB)	Method	Com
5/15/1973	8,068.0	CASING TALLY	
7/1/2008	8,067.0	TAG	

Wellbore Sections

Section Des	Size (in)	Act Top (ftKB)	Act Btm (ftKB)
SURFACE	12 1/4	10.0	218.0
PRODUCTION	7 7/8	218.0	8,150.0

Zone Statuses

Zone Name	Status Date	Status	Job
J SAND	7/5/1973	PR	DRILLING/COMPLETION - ORIGINAL, 5/4/1973 00:00

Casing Strings

Surface, 216.0ftKB

Casing Description	Run Date	OD (in)	Wt/Len (l...	Grade	Top (ftKB)	MD (ftKB)
Surface	5/5/1973	8 5/8	23.00	K-55	10.0	216.0

Production, 8,150.0ftKB

Casing Description	Run Date	OD (in)	Wt/Len (l...	Grade	Top (ftKB)	MD (ftKB)
Production	5/15/1973	4 1/2	15.10		10.0	8,150.0

Cement

Description	Top Depth (ftKB)	Bottom Depth (ftKB)
SURFACE CASING CEMENT	10.0	216.0
PRODUCTION CASING CEMENT	7,270.0	8,150.0
Remedial Cement Squeeze	10.0	1,400.0

Tubing Components

Item Des	OD (in)	Wt (lb/ft)	Grade	Jts	Len (ft)	Btm (ftKB)	Btm (TVD) (ftKB)
Tubing Pup Joint	2 3/8			2	20.00	30.0	
Tubing	2 3/8	4.70	J-55	248	7,985.35	8,015.4	
Seal Nipple	2 3/8			1	1.00	8,016.4	
Notched collar	2 3/8			1	0.60	8,017.0	

Perforation Data

Zone	Bnch/St g	Entered Shot Total	Top (ftKB)	Btm (ftKB)	Date
J SAND, ORIGINAL HOLE		16	8,038.00	8,048.00	6/30/1973

Stimulations & Treatments

Date	Zone	Primary Job Type
7/1/1973	J SAND, ORIGINAL HOLE	
Technical Result		Tech Result Details
		Tech Result Note

Comment

Other In Hole

Run Date	Des	OD (in)	Top (ftKB)	Btm (ftKB)

Logs

Date	Type	Top (ftKB)	Btm (ftKB)
5/15/1973	Induction	217.0	8,113.0