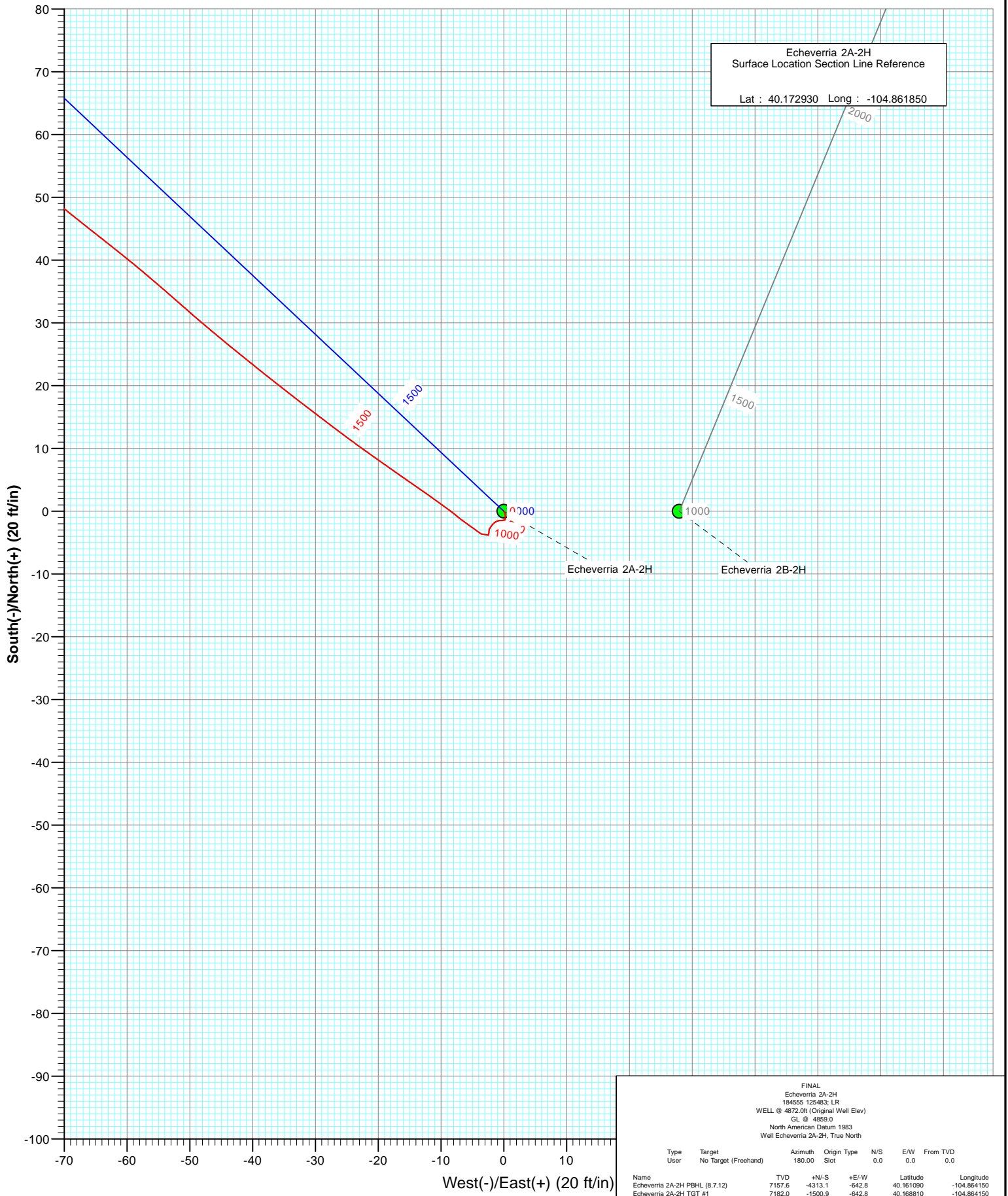


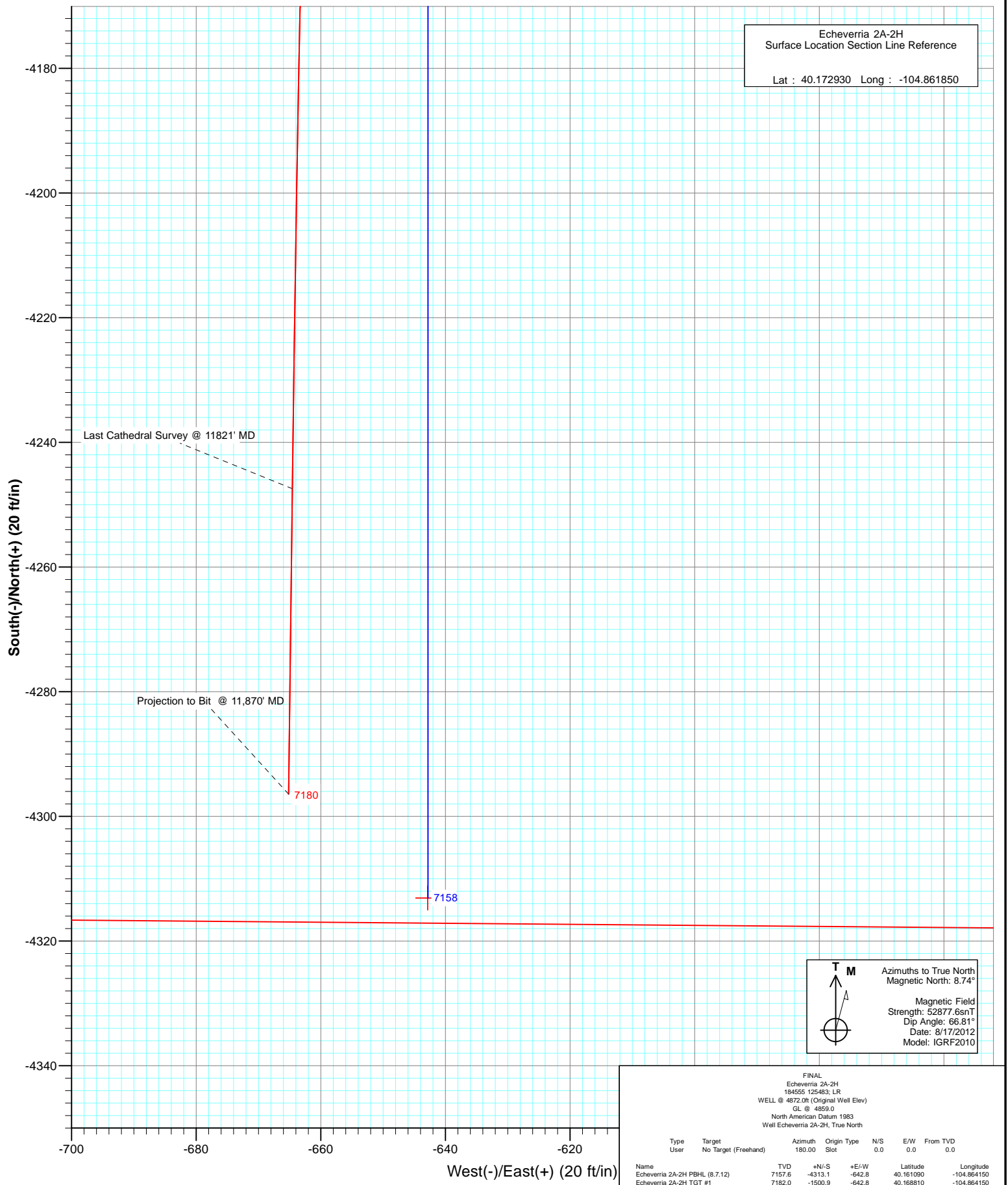


Project: DJ Wattenberg
Site: S2-T2N-R67W (Echevarria)
Well: Echeverria 2A-2H
Wellbore: Hz
Plan: FINAL





Project: DJ Wattenberg
Site: S2-T2N-R67W (Echevarria)
Well: Echeverria 2A-2H
Wellbore: Hz
Plan: FINAL



Cathedral Energy Services

Survey Report

Company:	EnCana Oil & Gas (USA) Inc	Local Co-ordinate Reference:	Well Echeverria 2A-2H
Project:	DJ Wattenberg	TVD Reference:	WELL @ 4872.0ft (Original Well Elev)
Site:	S2-T2N-R67W (Echevarria)	MD Reference:	WELL @ 4872.0ft (Original Well Elev)
Well:	Echeverria 2A-2H	North Reference:	True
Wellbore:	Hz	Survey Calculation Method:	Minimum Curvature
Design:	FINAL	Database:	USA EDM 5000 Multi Users DB

Project	DJ Wattenberg		
Map System:	US State Plane 1983	System Datum:	Mean Sea Level
Geo Datum:	North American Datum 1983		
Map Zone:	Colorado Northern Zone		

Site		S2-T2N-R67W (Echevarria)			
Site Position:		Northing:	1,304,019.00 ft	Latitude:	40.166140
From:	Lat/Long	Easting:	3,179,293.88 ft	Longitude:	-104.858470
Position Uncertainty:	0.0 ft	Slot Radius:	13.200 in	Grid Convergence:	0.41 °

Well	Echeverria 2A-2H					
Well Position	+N/-S	0.0 ft	Northing:	1,306,485.60 ft	Latitude:	40.172930
	+E/-W	0.0 ft	Easting:	3,178,331.49 ft	Longitude:	-104.861850
Position Uncertainty		0.0 ft	Wellhead Elevation:	ft	Ground Level:	4,859.0 ft

Wellbore	Hz				
Magnetics	Model Name	Sample Date	Declination (°)	Dip Angle (°)	Field Strength (nT)
	IGRF2010	8/17/2012	8.74	66.81	52,878

Design	FINAL			
Audit Notes:				
Version:	1.0	Phase:	ACTUAL	Tie On Depth: 0.0
Vertical Section:	Depth From (TVD) (ft)	+N/-S (ft)	+E/-W (ft)	Direction (°)
	0.0	0.0	0.0	180.00

Survey Program	Date	8/27/2012			
From (ft)	To (ft)	Survey (Wellbore)	Tool Name	Description	
108.0	11,870.0	Survey #1 (Hz)	MWD	Geolink MWD	

Survey									
Measured Depth (ft)	Inclination (°)	Azimuth (°)	Vertical Depth (ft)	+N/-S (ft)	+E/-W (ft)	Vertical Section (ft)	Dogleg Rate (°/100ft)	Build Rate (°/100ft)	Formations / Comments
0.0	0.00	0.00	0.0	0.0	0.0	0.0	0.00	0.00	
108.0	0.10	148.40	108.0	-0.1	0.0	0.1	0.09	0.09	
169.0	0.10	147.60	169.0	-0.2	0.1	0.2	0.00	0.00	
262.0	0.20	161.10	262.0	-0.4	0.2	0.4	0.11	0.11	
353.0	0.30	179.30	353.0	-0.8	0.3	0.8	0.14	0.11	
445.0	0.20	179.10	445.0	-1.2	0.3	1.2	0.11	-0.11	
537.0	0.10	242.00	537.0	-1.4	0.2	1.4	0.19	-0.11	
629.0	0.40	264.70	629.0	-1.4	-0.2	1.4	0.34	0.33	
721.0	0.30	264.30	721.0	-1.5	-0.8	1.5	0.11	-0.11	
813.0	0.40	240.80	813.0	-1.7	-1.3	1.7	0.19	0.11	
904.0	0.60	219.50	904.0	-2.2	-1.9	2.2	0.30	0.22	
966.0	0.60	211.00	966.0	-2.7	-2.2	2.7	0.14	0.00	
997.0	0.50	185.70	997.0	-3.0	-2.3	3.0	0.84	-0.32	

Cathedral Energy Services

Survey Report

Company:	EnCana Oil & Gas (USA) Inc	Local Co-ordinate Reference:	Well Echeverria 2A-2H
Project:	DJ Wattenberg	TVD Reference:	WELL @ 4872.0ft (Original Well Elev)
Site:	S2-T2N-R67W (Echevarria)	MD Reference:	WELL @ 4872.0ft (Original Well Elev)
Well:	Echeverria 2A-2H	North Reference:	True
Wellbore:	Hz	Survey Calculation Method:	Minimum Curvature
Design:	FINAL	Database:	USA EDM 5000 Multi Users DB

Survey									
Measured Depth (ft)	Inclination (°)	Azimuth (°)	Vertical Depth (ft)	+N/-S (ft)	+E/-W (ft)	Vertical Section (ft)	Dogleg Rate (°/100ft)	Build Rate (°/100ft)	Formations / Comments
1,089.0	0.50	187.20	1,089.0	-3.8	-2.4	3.8	0.01	0.00	
1,181.0	1.60	297.10	1,181.0	-3.6	-3.6	3.6	1.99	1.20	
1,273.0	3.40	310.00	1,272.9	-1.3	-6.8	1.3	2.04	1.96	
1,365.0	5.30	304.60	1,364.6	2.9	-12.4	-2.9	2.11	2.07	
1,457.0	7.00	305.30	1,456.1	8.5	-20.5	-8.5	1.85	1.85	
1,552.0	8.40	307.60	1,550.2	16.1	-30.7	-16.1	1.51	1.47	
1,647.0	8.20	308.80	1,644.2	24.6	-41.5	-24.6	0.28	-0.21	
1,742.0	9.00	311.40	1,738.2	33.8	-52.4	-33.8	0.94	0.84	
1,836.0	8.60	308.10	1,831.0	43.0	-63.4	-43.0	0.69	-0.43	
1,931.0	9.30	309.30	1,924.9	52.2	-74.9	-52.2	0.76	0.74	
2,026.0	9.40	311.10	2,018.6	62.2	-86.7	-62.2	0.33	0.11	
2,121.0	9.90	311.20	2,112.3	72.6	-98.7	-72.6	0.53	0.53	
2,216.0	8.90	308.50	2,206.0	82.6	-110.6	-82.6	1.15	-1.05	
2,311.0	9.10	315.70	2,299.8	92.5	-121.6	-92.5	1.20	0.21	
2,405.0	7.30	307.90	2,392.9	101.5	-131.5	-101.5	2.25	-1.91	
2,500.0	7.80	312.80	2,487.1	109.6	-141.0	-109.6	0.86	0.53	
2,595.0	8.40	317.10	2,581.1	119.1	-150.5	-119.1	0.90	0.63	
2,690.0	9.70	321.80	2,674.9	130.5	-160.1	-130.5	1.57	1.37	
2,785.0	9.60	320.90	2,768.6	142.9	-170.1	-142.9	0.19	-0.11	
2,880.0	8.80	320.00	2,862.4	154.6	-179.7	-154.6	0.86	-0.84	
2,974.0	9.00	321.50	2,955.2	165.9	-188.9	-165.9	0.33	0.21	
3,069.0	8.70	315.00	3,049.1	176.8	-198.7	-176.8	1.10	-0.32	
3,164.0	8.50	314.00	3,143.0	186.7	-208.8	-186.7	0.26	-0.21	
3,259.0	8.30	308.60	3,237.0	195.9	-219.2	-195.9	0.86	-0.21	
3,354.0	8.60	309.60	3,331.0	204.7	-230.0	-204.7	0.35	0.32	
3,449.0	8.10	317.80	3,425.0	214.2	-240.0	-214.2	1.36	-0.53	
3,543.0	8.60	318.40	3,518.0	224.3	-249.1	-224.3	0.54	0.53	
3,638.0	8.50	316.80	3,611.9	234.8	-258.6	-234.8	0.27	-0.11	
3,733.0	9.10	322.20	3,705.8	245.8	-268.0	-245.8	1.07	0.63	
3,828.0	8.70	323.90	3,799.7	257.6	-276.9	-257.6	0.50	-0.42	
3,923.0	9.50	323.60	3,893.5	269.7	-285.8	-269.7	0.84	0.84	
4,018.0	8.70	322.20	3,987.3	281.7	-294.8	-281.7	0.87	-0.84	
4,113.0	8.70	317.10	4,081.2	292.6	-304.1	-292.6	0.81	0.00	
4,207.0	7.60	307.00	4,174.2	301.6	-313.9	-301.6	1.92	-1.17	
4,302.0	7.30	309.90	4,268.4	309.2	-323.6	-309.2	0.51	-0.32	
4,397.0	8.20	312.80	4,362.6	317.7	-333.2	-317.7	1.03	0.95	
4,492.0	8.70	307.70	4,456.5	326.7	-343.8	-326.7	0.95	0.53	
4,587.0	9.50	310.30	4,550.3	336.1	-355.5	-336.1	0.95	0.84	
4,681.0	8.30	307.70	4,643.2	345.3	-366.8	-345.3	1.35	-1.28	
4,776.0	8.90	305.70	4,737.1	353.8	-378.2	-353.8	0.71	0.63	
4,871.0	9.10	309.90	4,831.0	362.9	-389.9	-362.9	0.72	0.21	
4,966.0	10.40	315.60	4,924.6	373.8	-401.7	-373.8	1.70	1.37	
5,061.0	8.60	314.90	5,018.3	385.0	-412.7	-385.0	1.90	-1.89	
5,155.0	8.30	319.00	5,111.3	395.1	-422.1	-395.1	0.72	-0.32	
5,250.0	8.50	317.90	5,205.3	405.5	-431.3	-405.5	0.27	0.21	
5,345.0	9.10	315.40	5,299.1	416.0	-441.3	-416.0	0.75	0.63	
5,440.0	8.30	311.40	5,393.0	425.9	-451.7	-425.9	1.06	-0.84	
5,534.0	7.40	313.50	5,486.2	434.6	-461.2	-434.6	1.00	-0.96	
5,629.0	7.70	309.90	5,580.3	442.8	-470.5	-442.8	0.59	0.32	
5,724.0	7.90	305.30	5,674.5	450.7	-480.7	-450.7	0.69	0.21	
5,811.0	7.80	305.00	5,820.1	462.3	-497.2	-462.3	0.07	-0.07	
5,914.0	8.00	302.40	5,862.7	465.5	-502.1	-465.5	0.95	0.47	
6,009.0	8.10	308.40	5,956.7	473.2	-512.9	-473.2	0.89	0.11	

Cathedral Energy Services

Survey Report

Company:	EnCana Oil & Gas (USA) Inc	Local Co-ordinate Reference:	Well Echeverria 2A-2H
Project:	DJ Wattenberg	TVD Reference:	WELL @ 4872.0ft (Original Well Elev)
Site:	S2-T2N-R67W (Echevarria)	MD Reference:	WELL @ 4872.0ft (Original Well Elev)
Well:	Echeverria 2A-2H	North Reference:	True
Wellbore:	Hz	Survey Calculation Method:	Minimum Curvature
Design:	FINAL	Database:	USA EDM 5000 Multi Users DB

Survey									
Measured Depth (ft)	Inclination (°)	Azimuth (°)	Vertical Depth (ft)	+N/-S (ft)	+E/-W (ft)	Vertical Section (ft)	Dogleg Rate (°/100ft)	Build Rate (°/100ft)	Formations / Comments
6,104.0	8.70	313.70	6,050.7	482.4	-523.3	-482.4	1.03	0.63	
6,198.0	8.00	309.10	6,143.7	491.4	-533.6	-491.4	1.03	-0.74	
6,293.0	7.70	304.00	6,237.8	499.1	-544.0	-499.1	0.80	-0.32	
6,388.0	7.90	299.90	6,332.0	505.9	-554.9	-505.9	0.62	0.21	
6,451.0	8.00	302.20	6,394.3	510.4	-562.4	-510.4	0.53	0.16	
6,514.0	8.00	300.70	6,456.7	515.0	-569.8	-515.0	0.33	0.00	
6,546.0	8.80	293.80	6,488.4	517.1	-574.0	-517.1	4.02	2.50	
6,578.0	8.80	282.70	6,520.0	518.7	-578.6	-518.7	5.30	0.00	
6,609.0	10.20	268.50	6,550.6	519.1	-583.7	-519.1	8.77	4.52	
6,641.0	11.40	261.10	6,582.0	518.5	-589.6	-518.5	5.72	3.75	
6,672.0	12.40	257.00	6,612.4	517.3	-595.9	-517.3	4.22	3.23	
6,704.0	12.50	255.60	6,643.6	515.7	-602.6	-515.7	0.99	0.31	
6,736.0	12.70	248.70	6,674.8	513.5	-609.2	-513.5	4.74	0.62	
6,767.0	13.90	240.90	6,705.0	510.5	-615.7	-510.5	6.96	3.87	
6,799.0	15.50	233.80	6,736.0	506.1	-622.5	-506.1	7.52	5.00	
6,830.0	17.40	226.60	6,765.7	500.5	-629.2	-500.5	8.98	6.13	
6,862.0	19.40	221.00	6,796.1	493.2	-636.2	-493.2	8.33	6.25	
6,894.0	20.60	217.00	6,826.1	484.7	-643.0	-484.7	5.68	3.75	
6,925.0	22.30	212.10	6,855.0	475.3	-649.4	-475.3	7.96	5.48	
6,957.0	23.90	207.90	6,884.4	464.4	-655.7	-464.4	7.17	5.00	
6,989.0	25.90	204.80	6,913.5	452.4	-661.7	-452.4	7.46	6.25	
7,020.0	28.20	199.50	6,941.1	439.3	-667.0	-439.3	10.74	7.42	
7,052.0	30.80	197.40	6,968.9	424.4	-671.9	-424.4	8.74	8.12	
7,083.0	34.20	196.30	6,995.1	408.4	-676.7	-408.4	11.13	10.97	
7,115.0	37.10	195.00	7,021.1	390.5	-681.8	-390.5	9.37	9.06	
7,147.0	39.50	195.00	7,046.2	371.3	-686.9	-371.3	7.50	7.50	
7,178.0	42.20	192.90	7,069.6	351.6	-691.8	-351.6	9.77	8.71	
7,210.0	46.30	188.90	7,092.5	329.7	-696.0	-329.7	15.49	12.81	
7,241.0	50.80	185.60	7,113.1	306.7	-698.9	-306.7	16.56	14.52	
7,273.0	55.20	182.70	7,132.3	281.2	-700.7	-281.2	15.54	13.75	
7,305.0	60.20	181.60	7,149.4	254.2	-701.7	-254.2	15.89	15.62	
7,336.0	63.80	179.90	7,164.0	226.8	-702.1	-226.8	12.58	11.61	
7,368.0	68.80	178.30	7,176.8	197.5	-701.6	-197.5	16.28	15.62	
7,400.0	74.40	176.70	7,186.9	167.2	-700.3	-167.2	18.13	17.50	
7,431.0	80.40	175.40	7,193.7	137.0	-698.2	-137.0	19.78	19.35	
7,451.0	84.20	174.60	7,196.4	117.3	-696.5	-117.3	19.41	19.00	
7,527.0	89.00	173.40	7,200.9	41.9	-688.5	-41.9	6.51	6.32	
7,591.0	90.20	175.20	7,201.3	-21.8	-682.2	21.8	3.38	1.87	
7,654.0	90.50	174.10	7,200.9	-84.5	-676.3	84.5	1.81	0.48	
7,717.0	89.80	173.40	7,200.8	-147.1	-669.4	147.1	1.57	-1.11	
7,780.0	89.90	173.00	7,200.9	-209.7	-662.0	209.7	0.65	0.16	
7,843.0	90.40	172.70	7,200.8	-272.2	-654.1	272.2	0.93	0.79	
7,907.0	89.90	173.40	7,200.6	-335.7	-646.4	335.7	1.34	-0.78	
7,970.0	90.40	175.60	7,200.4	-398.4	-640.4	398.4	3.58	0.79	
8,033.0	91.10	176.50	7,199.6	-461.3	-636.0	461.3	1.81	1.11	
8,096.0	90.10	178.30	7,198.9	-524.2	-633.2	524.2	3.27	-1.59	
8,159.0	91.90	179.30	7,197.8	-587.2	-631.8	587.2	3.27	2.86	
8,223.0	91.60	179.80	7,195.9	-651.2	-631.3	651.2	0.91	-0.47	
8,286.0	92.00	180.20	7,193.9	-714.1	-631.3	714.1	0.90	0.63	
8,349.0	91.20	180.50	7,192.2	-777.1	-631.7	777.1	1.36	-1.27	
8,412.0	91.60	179.20	7,190.6	-840.1	-631.6	840.1	2.16	0.63	
8,475.0	90.50	179.90	7,189.5	-903.1	-631.1	903.1	2.07	-1.75	
8,539.0	88.50	177.50	7,190.0	-967.0	-629.6	967.0	4.88	-3.12	

Cathedral Energy Services

Survey Report

Company:	EnCana Oil & Gas (USA) Inc	Local Co-ordinate Reference:	Well Echeverria 2A-2H
Project:	DJ Wattenberg	TVD Reference:	WELL @ 4872.0ft (Original Well Elev)
Site:	S2-T2N-R67W (Echevarria)	MD Reference:	WELL @ 4872.0ft (Original Well Elev)
Well:	Echeverria 2A-2H	North Reference:	True
Wellbore:	Hz	Survey Calculation Method:	Minimum Curvature
Design:	FINAL	Database:	USA EDM 5000 Multi Users DB

Survey									
Measured Depth (ft)	Inclination (°)	Azimuth (°)	Vertical Depth (ft)	+N/-S (ft)	+E/-W (ft)	Vertical Section (ft)	Dogleg Rate (°/100ft)	Build Rate (°/100ft)	Formations / Comments
8,602.0	89.40	178.40	7,191.2	-1,030.0	-627.4	1,030.0	2.02	1.43	
8,665.0	91.80	178.90	7,190.5	-1,093.0	-625.9	1,093.0	3.89	3.81	
8,728.0	89.50	178.10	7,189.8	-1,155.9	-624.2	1,155.9	3.87	-3.65	
8,791.0	91.00	179.50	7,189.5	-1,218.9	-622.9	1,218.9	3.26	2.38	
8,855.0	89.90	178.50	7,189.0	-1,282.9	-621.8	1,282.9	2.32	-1.72	
8,918.0	90.30	181.20	7,188.9	-1,345.9	-621.6	1,345.9	4.33	0.63	
8,981.0	90.40	183.00	7,188.5	-1,408.9	-623.9	1,408.9	2.86	0.16	
9,044.0	91.30	184.70	7,187.6	-1,471.7	-628.2	1,471.7	3.05	1.43	
9,074.0	90.69	183.06	7,187.1	-1,501.6	-630.2	1,501.6	5.83	-2.03	Echeverria 2A-2H TGT #1
9,108.0	90.00	181.20	7,186.9	-1,535.6	-631.5	1,535.6	5.83	-2.03	
9,171.0	90.80	182.60	7,186.4	-1,598.6	-633.5	1,598.6	2.56	1.27	
9,234.0	89.50	179.10	7,186.3	-1,661.5	-634.5	1,661.5	5.93	-2.06	
9,297.0	90.50	180.00	7,186.3	-1,724.5	-634.0	1,724.5	2.14	1.59	
9,360.0	89.20	178.40	7,186.4	-1,787.5	-633.1	1,787.5	3.27	-2.06	
9,423.0	90.20	178.60	7,186.8	-1,850.5	-631.5	1,850.5	1.62	1.59	
9,487.0	90.60	179.90	7,186.3	-1,914.5	-630.6	1,914.5	2.13	0.62	
9,550.0	89.80	177.80	7,186.1	-1,977.5	-629.4	1,977.5	3.57	-1.27	
9,613.0	89.70	178.10	7,186.4	-2,040.4	-627.1	2,040.4	0.50	-0.16	
9,676.0	90.90	178.70	7,186.0	-2,103.4	-625.3	2,103.4	2.13	1.90	
9,739.0	90.50	177.40	7,185.3	-2,166.4	-623.2	2,166.4	2.16	-0.63	
9,803.0	90.30	177.80	7,184.8	-2,230.3	-620.5	2,230.3	0.70	-0.31	
9,866.0	91.00	179.00	7,184.1	-2,293.3	-618.8	2,293.3	2.21	1.11	
9,929.0	90.60	179.50	7,183.2	-2,356.3	-617.9	2,356.3	1.02	-0.63	
9,993.0	90.90	180.50	7,182.4	-2,420.3	-617.9	2,420.3	1.63	0.47	
10,056.0	91.00	180.70	7,181.3	-2,483.3	-618.6	2,483.3	0.35	0.16	
10,119.0	91.00	180.30	7,180.2	-2,546.2	-619.1	2,546.2	0.63	0.00	
10,182.0	90.40	180.20	7,179.5	-2,609.2	-619.4	2,609.2	0.97	-0.95	
10,246.0	90.30	180.80	7,179.1	-2,673.2	-620.0	2,673.2	0.95	-0.16	
10,309.0	89.80	179.50	7,179.0	-2,736.2	-620.1	2,736.2	2.21	-0.79	
10,372.0	90.60	180.70	7,178.8	-2,799.2	-620.3	2,799.2	2.29	1.27	
10,435.0	90.20	180.60	7,178.4	-2,862.2	-621.0	2,862.2	0.65	-0.63	
10,499.0	90.40	181.30	7,178.0	-2,926.2	-622.0	2,926.2	1.14	0.31	
10,562.0	90.00	181.40	7,177.8	-2,989.2	-623.5	2,989.2	0.65	-0.63	
10,625.0	90.30	181.30	7,177.6	-3,052.2	-625.0	3,052.2	0.50	0.48	
10,688.0	89.70	180.70	7,177.6	-3,115.2	-626.1	3,115.2	1.35	-0.95	
10,751.0	90.10	181.40	7,177.8	-3,178.2	-627.2	3,178.2	1.28	0.63	
10,815.0	90.40	181.20	7,177.5	-3,242.2	-628.7	3,242.2	0.56	0.47	
10,878.0	90.10	181.10	7,177.2	-3,305.1	-630.0	3,305.1	0.50	-0.48	
10,941.0	90.20	182.00	7,177.0	-3,368.1	-631.7	3,368.1	1.44	0.16	
11,004.0	89.90	182.20	7,177.0	-3,431.1	-634.0	3,431.1	0.57	-0.48	
11,068.0	89.90	182.20	7,177.1	-3,495.0	-636.4	3,495.0	0.00	0.00	
11,131.0	90.20	182.30	7,177.0	-3,558.0	-638.9	3,558.0	0.50	0.48	
11,194.0	90.10	182.90	7,176.9	-3,620.9	-641.8	3,620.9	0.97	-0.16	
11,257.0	89.50	182.30	7,177.1	-3,683.9	-644.6	3,683.9	1.35	-0.95	
11,321.0	89.20	181.70	7,177.8	-3,747.8	-646.9	3,747.8	1.05	-0.47	
11,416.0	90.00	182.20	7,178.5	-3,842.8	-650.1	3,842.8	0.99	0.84	
11,510.0	90.20	182.70	7,178.3	-3,936.7	-654.1	3,936.7	0.57	0.21	
11,605.0	89.80	182.60	7,178.3	-4,031.6	-658.5	4,031.6	0.43	-0.42	
11,700.0	89.30	181.80	7,179.1	-4,126.5	-662.1	4,126.5	0.99	-0.53	
11,763.0	89.60	181.00	7,179.7	-4,189.5	-663.7	4,189.5	1.36	0.48	
11,821.0	89.80	180.70	7,180.0	-4,247.4	-664.5	4,247.4	0.62	0.34	Last Cathedral Survey @ 11821' MD
11,870.0	89.80	180.70	7,180.1	-4,296.4	-665.1	4,296.4	0.00	0.00	Projection to Bit @ 11,870' MD - Echeverria 2A-

Cathedral Energy Services

Survey Report

Company:	EnCana Oil & Gas (USA) Inc	Local Co-ordinate Reference:	Well Echeverria 2A-2H
Project:	DJ Wattenberg	TVD Reference:	WELL @ 4872.0ft (Original Well Elev)
Site:	S2-T2N-R67W (Echevarria)	MD Reference:	WELL @ 4872.0ft (Original Well Elev)
Well:	Echeverria 2A-2H	North Reference:	True
Wellbore:	Hz	Survey Calculation Method:	Minimum Curvature
Design:	FINAL	Database:	USA EDM 5000 Multi Users DB

Targets									
Target Name	Dip Angle	Dip Dir.	TVD	+N/-S	+E/-W	Northing	Easting	Latitude	Longitude
- hit/miss target	(°)	(°)	(ft)	(ft)	(ft)	(ft)	(ft)		
- Shape									
Echeverria 2A-2H TGT #	0.00	0.41	7,182.0	-1,500.9	-642.8	1,304,980.10	3,177,699.51	40.168810	-104.864150
- survey misses target center by 13.6ft at 9074.0ft MD (7187.1 TVD, -1501.6 N, -630.2 E)									
- Point									
Echeverria 2A-2H PBHL	0.00	0.41	7,157.6	-4,313.1	-642.8	1,302,168.01	3,177,719.71	40.161090	-104.864150
- survey misses target center by 35.8ft at 11870.0ft MD (7180.1 TVD, -4296.4 N, -665.1 E)									
- Point									

Survey Annotations					
Measured Depth	Vertical Depth	Local Coordinates			
(ft)	(ft)	+N/-S	+E/-W		
		(ft)	(ft)	Comment	
11,821.0	7,180.0	-4,247.4	-664.5	Last Cathedral Survey @ 11821' MD	
11,870.0	7,180.1	-4,296.4	-665.1	Projection to Bit @ 11,870' MD	

Checked By: _____ Approved By: _____ Date: _____