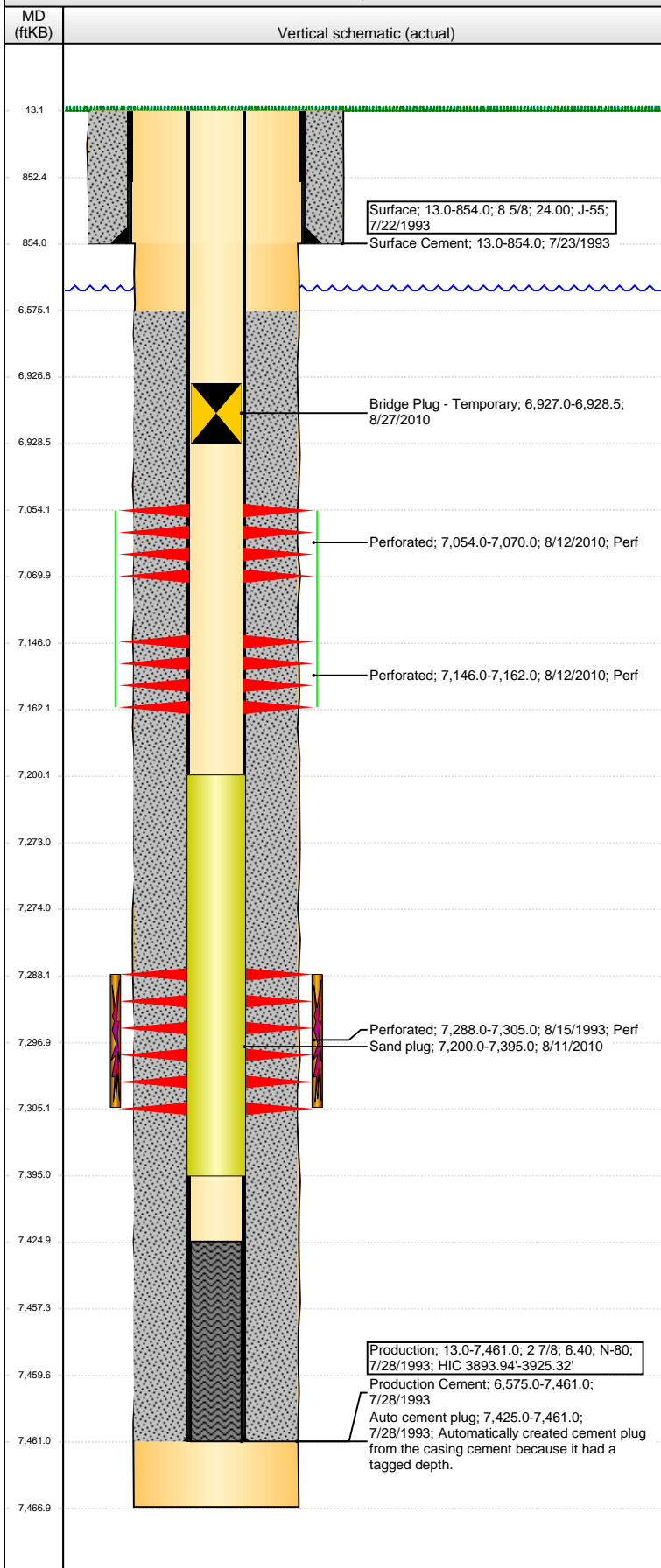


Well Name: DOM RED X20-03

VERTICAL - ORIGINAL HOLE, 4/26/2013 8:06:56 AM



Well Header

API	Business Unit	District	Well Config
05-123-17165	WATTENBERG	15	VERTICAL
Original KB Elevation (ft)	KB - GL / MSL (ftKB)	Spud Date	P & A Date
4,935.00	13.00	7/23/1993	

Comment

HIC 3893.94'-3925.32'

Directions To Well

RD 20 & RD 41, WEST 0.8 MILES TO BATTERY, SOUTH 0.1 MILES, EAST 0.1 MILES, NORTH INTO LOCATION

Congressional Location

Quarter 1	Quarter 2	Quarter 3	Quarter 4	Section	Township	Twnshp N...	Range	Rng E/W Dir
		NE	NW	20	2	N	65	W

Bottom Hole Location

North-South Distance (ft)	From N or S Line	East-West Distance (ft)	From E or W Line
---------------------------	------------------	-------------------------	------------------

Plug Back Total Depths

Date	Depth (ftKB)	Method	Com
8/15/1993	7,425.0	CASED HOLE LOG	DEPTH-LOGGER/CBL
10/8/2007	7,297.0	TAG	CO TO 7395

Wellbore Sections

Section Des	Size (in)	Act Top (ftKB)	Act Btm (ftKB)
SURFACE	12 1/4	13.0	854.0
PRODUCTION	7 7/8	854.0	7,467.0

Zone Statuses

Zone Name	Status Date	Status	Job
CODELL	8/30/1993	PR	DRILLING/COMPLETION - ORIGINAL, 7/23/1993 06:00
CODELL	8/10/2010	SI	RECOMPLETION, 8/10/2010 11:30

Casing Strings

Surface, 854.0ftKB

Casing Description	Run Date	OD (in)	Wt/Len (l...)	Grade	Top (ftKB)	MD (ftKB)
Surface	7/22/1993	8 5/8	24.00	J-55	13.0	854.0

Production, 7,461.0ftKB

Casing Description	Run Date	OD (in)	Wt/Len (l...)	Grade	Top (ftKB)	MD (ftKB)
Production	7/28/1993	2 7/8	6.40	N-80	13.0	7,461.0

Cement

Description	Top Depth (ftKB)	Bottom Depth (ftKB)
Surface Cement	13.0	854.0
Description	Top Depth (ftKB)	Bottom Depth (ftKB)
Production Cement	6,575.0	7,461.0

Tubing Components

Item Des	OD (in)	Wt (lb/ft)	Grade	Jts	Len (ft)	Btm (ftKB)	Btm (TVD) (ftKB)
----------	---------	------------	-------	-----	----------	------------	------------------

Perforation Data

Zone	Bnch/St g	Entered Shot Total	Top (ftKB)	Btm (ftKB)	Date
NIOBRARA, ORIGINAL HOLE	B	64	7,054.00	7,070.00	8/12/2010
NIOBRARA, ORIGINAL HOLE	C	64	7,146.00	7,162.00	8/12/2010
CODELL, ORIGINAL HOLE		52	7,288.00	7,305.00	8/15/1993

Stimulations & Treatments

Date	Zone	Primary Job Type
8/16/1993	CODELL, ORIGINAL HOLE	DRILLING/COMPLETION - ORIGINAL
Technical Result	Tech Result Details	Tech Result Note

Comment

Date	Zone	Primary Job Type
8/24/2010	NIOBRARA, ORIGINAL HOLE	RECOMPLETION
Technical Result	Tech Result Details	Tech Result Note
Failure	Mechanical	

Comment

(NIOBRARA RC): WAS 75 BBLs INTO JOB LETTING ACID SOAK AND GETTING A 5 MIN LEAK OFF PRESSURE. AT THIS TIME SURFACE PRESSURE CLIMBED TO 565 PSI. DOUBLE CHECKED PRESSURE TRANSDUCER. BLEED OFF SURFACE AND IT WOULD CLIMB BACK TO +500 EACH TIME. PUMPED MOVE SLICKWATER TO OVERDISPLACE THE ACID OUT OF THE WELLBORE. ABORTED NIOBRARA TREATMENT BECAUSE OF SURFACE PRESSURE ISSUES.

Well Name: DOM RED X20-03

VERTICAL - ORIGINAL HOLE, 4/26/2013 8:06:57 AM

Other In Hole

Run Date	Des	OD (in)	Top (ftKB)	Btm (ftKB)
8/11/2010	Sand plug	2 7/8	7,200.0	7,395.0
8/27/2010	Bridge Plug - Temporary	2.441	6,927.0	6,928.5

Logs

Date	Type	Top (ftKB)	Btm (ftKB)
7/2/1993	COMPENSATED DENSITY	4,100.0	7,470.0
7/2/1993	INDUCTION	4,450.0	4,800.0
8/15/1993	CBL/CCL/GR	6,480.0	7,420.0
2/14/2013	GYRO	13.0	6,850.0

