

The Road to Excellence Starts with Safety

Sold To #: 300721	Ship To #: 2961528	Quote #:	Sales Order #: 9938586
Customer: WPX ENERGY ROCKY MOUNTAIN LLC-EBUS	Customer Rep: Oaks, Rick		
Well Name: RWF	Well #: 24-36	API/UWI #: 05-045-21476	
Field: RULISON	City (SAP): RIFLE	County/Parish: Garfield	State: Colorado
Lat: N 39.482 deg. OR N 39 deg. 28 min. 56.111 secs.	Long: W 107.837 deg. OR W -108 deg. 9 min. 47.837 secs.		
Contractor: NABORS 576	Rig/Platform Name/Num: NABORS 576		
Job Purpose: Cement Surface Casing			
Well Type: Development Well	Job Type: Cement Surface Casing		
Sales Person: MAYO, MARK	Srvc Supervisor: SLAUGHTER, JESSE	MBU ID Emp #: 454315	

Job Personnel

HES Emp Name	Exp Hrs	Emp #	HES Emp Name	Exp Hrs	Emp #	HES Emp Name	Exp Hrs	Emp #
ANGLESTEIN, TROY Edward WM	5.5	436099	BURKE, BRENDAN Patrick	5.5	487782	HYDE, DUSTIN C	5.5	453940
SLAUGHTER, JESSE Dean	5.5	454315						

Equipment

HES Unit #	Distance-1 way	HES Unit #	Distance-1 way	HES Unit #	Distance-1 way	HES Unit #	Distance-1 way
10565341	60 mile	10872429	60 mile	10973571	60 mile	11259881	60 mile
11808847	60 mile						

Job Hours

Date	On Location Hours	Operating Hours	Date	On Location Hours	Operating Hours	Date	On Location Hours	Operating Hours
11-28-2012	3	2	11-29-2012	2.5	2.5			

TOTAL Total is the sum of each column separately

Job				Job Times			
Formation Name				Date	Time	Time Zone	
Formation Depth (MD)	Top		Bottom	Called Out	28 - Nov - 2012	17:50	MST
Form Type		BHST		On Location	28 - Nov - 2012	21:00	MST
Job depth MD	1131. ft	Job Depth TVD	1131. ft	Job Started	28 - Nov - 2012	23:42	MST
Water Depth		Wk Ht Above Floor	5. ft	Job Completed	28 - Nov - 2012	00:35	MST
Perforation Depth (MD)	From		To	Departed Loc	28 - Nov - 2012	02:30	MST

Well Data

Description	New / Used	Max pressure psig	Size in	ID in	Weight lbm/ft	Thread	Grade	Top MD ft	Bottom MD ft	Top TVD ft	Bottom TVD ft
-------------	------------	-------------------	---------	-------	---------------	--------	-------	-----------	--------------	------------	---------------

Sales/Rental/3rd Party (HES)

Description	Qty	Qty uom	Depth	Supplier
PLUG,CMTG,TOP,9 5/8,HWE,8.16 MIN/9.06 MA	1	EA		

Tools and Accessories

Type	Size	Qty	Make	Depth	Type	Size	Qty	Make	Depth	Type	Size	Qty	Make
Guide Shoe					Packer					Top Plug	9.625	1	HES
Float Shoe					Bridge Plug					Bottom Plug			
Float Collar					Retainer					SSR plug set			
Insert Float										Plug Container	9.625	1	HES
Stage Tool										Centralizers			

Miscellaneous Materials

Gelling Agt	Conc	Surfactant	Conc	Acid Type	Qty	Conc	%
Treatment Fld	Conc	Inhibitor	Conc	Sand Type	Size	Qty	

Fluid Data

Stage/Plug #: 1									
Fluid #	Stage Type	Fluid Name	Qty	Qty uom	Mixing Density lbm/gal	Yield ft ³ /sk	Mix Fluid Gal/sk	Rate bbl/min	Total Mix Fluid Gal/sk

Stage/Plug #: 1									
Fluid #	Stage Type	Fluid Name	Qty	Qty uom	Mixing Density lbm/gal	Yield ft ³ /sk	Mix Fluid Gal/sk	Rate bbl/min	Total Mix Fluid Gal/sk
1	Water Spacer	FRESH WATER	20.00	bbl	.	.0	.0	4	
2	Lead Cement	VERSACEM (TM) SYSTEM (452010)	160.0	sacks	12.3	2.38	13.75	8	13.75
		13.75 Gal FRESH WATER							
3	Tail Cement	VERSACEM (TM) SYSTEM (452010)	160.0	sacks	12.8	2.11	11.75	8	11.75
4	Displacement	FRESH WATER	85.5	bbl	.	.0	.0	10	
Calculated Values		Pressures		Volumes					
Displacement	85.5	Shut In: Instant		Lost Returns	NO	Cement Slurry	128	Pad	
Top Of Cement	SURFACE	5 Min		Cement Returns	30	Actual Displacement	85.5	Treatment	
Frac Gradient		15 Min		Spacers	20	Load and Breakdown		Total Job	233
Rates									
Circulating		Mixing	8	Displacement	10	Avg. Job	9		
Cement Left In Pipe	Amount	0 ft	Reason	Shoe Joint					
Frac Ring # 1 @	ID	Frac ring # 2 @	ID	Frac Ring # 3 @	ID	Frac Ring # 4 @	ID		
The Information Stated Herein Is Correct				Customer Representative Signature					

The Road to Excellence Starts with Safety

Sold To #: 300721	Ship To #: 2961528	Quote #:	Sales Order #: 9938586
Customer: WPX ENERGY ROCKY MOUNTAIN LLC-EBUS	Customer Rep: Oaks, Rick		
Well Name: RWF	Well #: 24-36	API/UWI #: 05-045-21476	
Field: RULISON	City (SAP): RIFLE	County/Parish: Garfield	State: Colorado
Legal Description:			
Lat: N 39.482 deg. OR N 39 deg. 28 min. 56.111 secs.		Long: W 107.837 deg. OR W -108 deg. 9 min. 47.837 secs.	
Contractor: NABORS 576	Rig/Platform Name/Num: NABORS 576		
Job Purpose: Cement Surface Casing	Ticket Amount:		
Well Type: Development Well	Job Type: Cement Surface Casing		
Sales Person: MAYO, MARK	Srvc Supervisor: SLAUGHTER, JESSE	MBU ID Emp #: 454315	

Activity Description	Date/Time	Cht #	Rate bbl/min	Volume bbl		Pressure psig		Comments
				Stage	Total	Tubing	Casing	
Call Out	11/28/2012 17:50							TD 1180 FT, TP 1130.69 FT, SHOE 43.72 FT, CSG 9 5/8 IN 32.3 LB/FT, HOLE 13 1/2 IN, MUD WT 9.8 PPG 60 VISC
Pre-Convoy Safety Meeting	11/28/2012 18:17							WITH ALL HES PERSONNEL
Crew Leave Yard	11/28/2012 18:17							
Arrive At Loc	11/28/2012 18:17							RIG WAS RUNNING CASING UPON HES ARRIVAL
Assessment Of Location Safety Meeting	11/28/2012 22:00							WITH ALL HES PERSONNEL
Other	11/28/2012 22:10							SPOT EQUIPMENT
Pre-Rig Up Safety Meeting	11/28/2012 22:20							WITH ALL HES PERSONNEL
Rig-Up Equipment	11/28/2012 22:30							
Pre-Job Safety Meeting	11/28/2012 23:35							WITH ALL PERSONNEL ON LOCATION
Start Job	11/28/2012 23:42							
Other	11/28/2012 23:42		2	2			60.0	FILL LINES WITH FRESH WATER
Test Lines	11/28/2012 23:44							TESTED LINES TO 3415 PSI PRESSURE HOLDING
Pump Spacer 1	11/28/2012 23:48		4	20			135.0	FRESH WATER
Pump Lead Cement	11/28/2012 23:55		8	67.8			347.0	160 SKS AT 12.3 PPG, 2.38 FT3/SK, 13.75 GAL/SK

Cementing Job Log

Activity Description	Date/Time	Cht #	Rate bbl/min	Volume bbl		Pressure psig		Comments
				Stage	Total	Tubing	Casing	
Pump Tail Cement	11/29/2012 00:04		8	60.1			375.0	160 SKS AT 12.8 PPG, 2.11 FT3/SK, 11.75 GAL/SK
Shutdown	11/29/2012 00:12							
Drop Top Plug	11/29/2012 00:15							PLUG LAUNCHED
Pump Displacement	11/29/2012 00:17		10	75.5			580.0	FRESH WATER
Slow Rate	11/29/2012 00:27		2	10			280.0	SLOW RATE 10 BBLs PRIOR TO CALCULATED DISPLACEMENT
Bump Plug	11/29/2012 00:32		2		85.5		870.0	PLUG BUMPED
Check Floats	11/29/2012 00:34							FLOATS HOLDING. HES RETURNED 1/2 BBL H2O TO PUMP
End Job	11/29/2012 00:35							PIPE WAS STATIC DURING JOB, GOOD CIRCULATION THROUGHOUT JOB, HES USED 40 LB SUGAR FOR JOB
Pre-Rig Down Safety Meeting	11/29/2012 00:40							WITH ALL HES PERSONNEL
Rig-Down Equipment	11/29/2012 00:45							
Pre-Convoy Safety Meeting	11/29/2012 02:20							WITH ALL HES PERSONNEL
Crew Leave Location	11/29/2012 02:30							
Comment	11/29/2012 02:31							THANK YOU FOR USING HALLIBURTON CEMENT DEPARTMENT. JESSE SLAUGHTER AND CREW.

Sold To #: 300721

Ship To #: 2961528

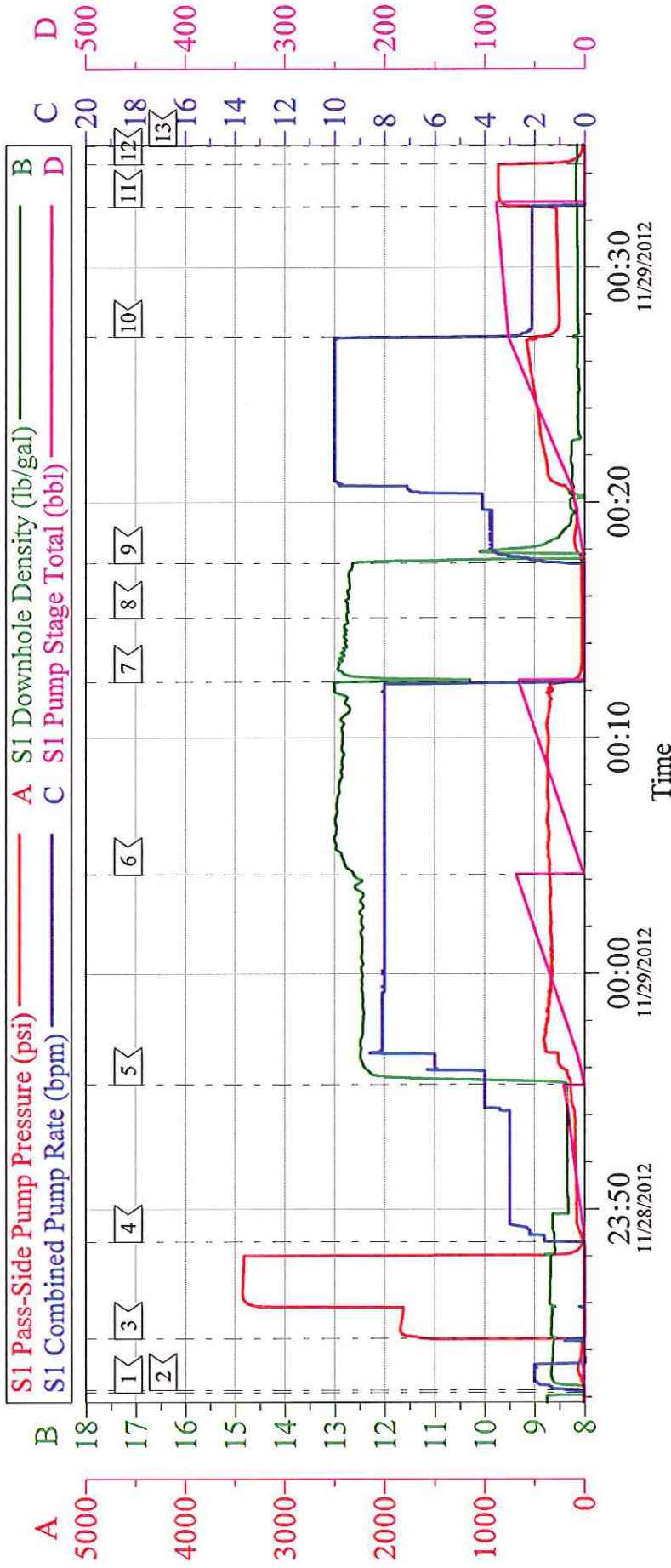
Quote #:

Sales Order #: 9938586

SUMMIT Version: 7.3.0045

Monday, December 03, 2012 02:29:00

WPX RWF 24-36 9 5/8 SURFACE

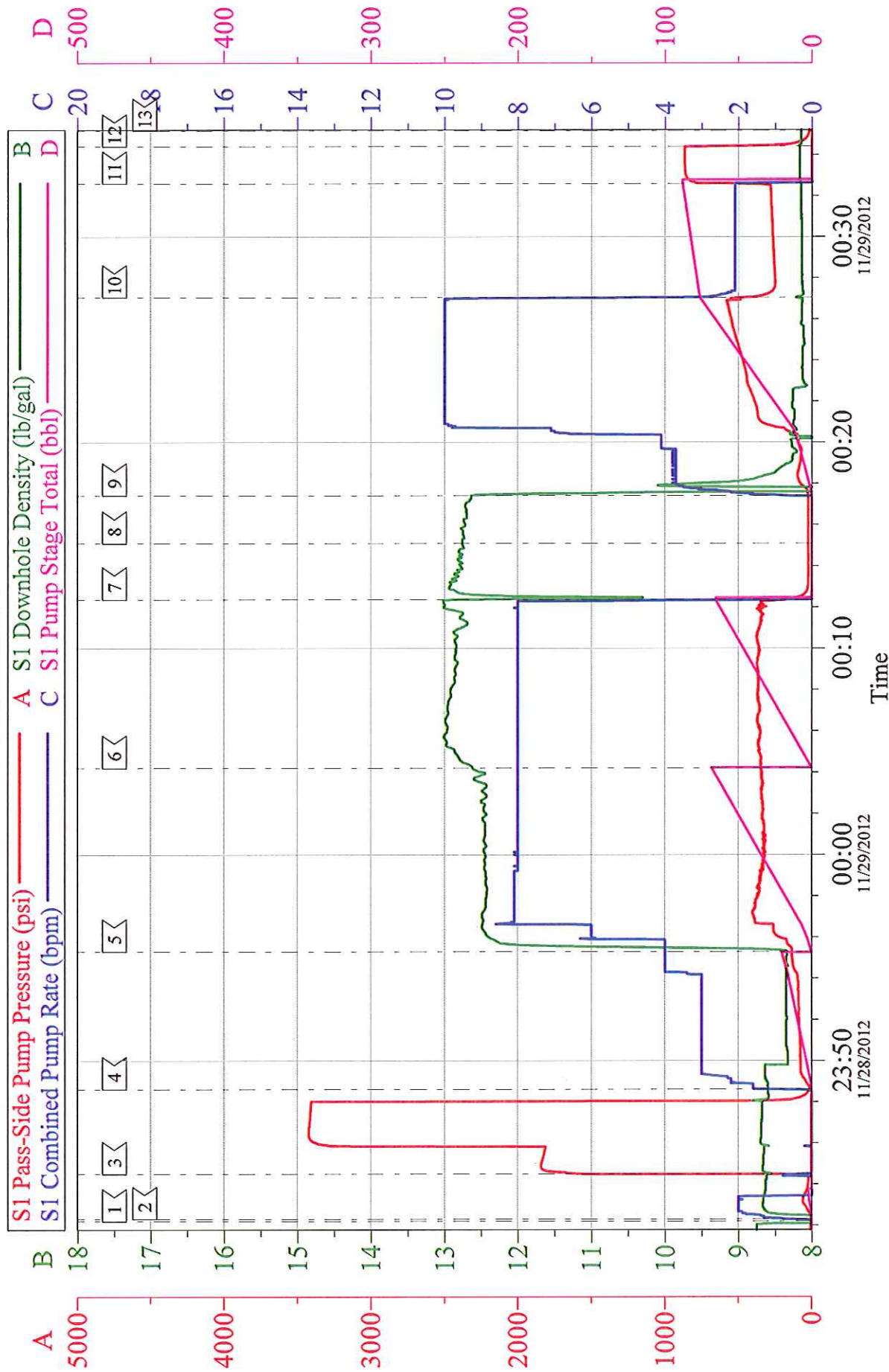


Local Event Log

1	START JOB	11/28/2012 23:42:12	2	FILL LINES	11/28/2012 23:42:18
3	TEST LINES	11/28/2012 23:44:29	4	PUMP H20 SPACER	11/28/2012 23:48:37
5	PUMP LEAD CEMENT	11/28/2012 23:55:18	6	PUMP TAIL CEMENT	11/29/2012 00:04:12
7	SHUTDOWN	11/29/2012 00:12:22	8	DROP TOP PLUG	11/29/2012 00:15:05
9	PUMP DISPLACEMENT	11/29/2012 00:17:25	10	SLOW RATE	11/29/2012 00:27:03
11	BUMP PLUG	11/29/2012 00:32:35	12	CHECK FLOATS	11/29/2012 00:34:24
13	END JOB	11/29/2012 00:35:10			

Customer: WPX	Job Date: 28-Nov-2012	Sales Order #: 9938586
Well Description: RWF 24-36	Job Type: SURFACE	ADC Used: YES
Customer Rep: RICK OAKS	Cement Supervisor: JESSE SLAUGHTER	Elite #7: TROY ANGLSTIEN

WPX RWF 24-36 9 5/8 SURFACE



Customer: WPX	Job Date: 28-Nov-2012	Sales Order #: 9938586
Well Description: RWF 24-36	Job Type: SURFACE	ADC Used: YES
Customer Rep: RICK OAKS	Cement Supervisor: JESSE SLAUGHTER	Elite #: TROY ANGLSTIEN