

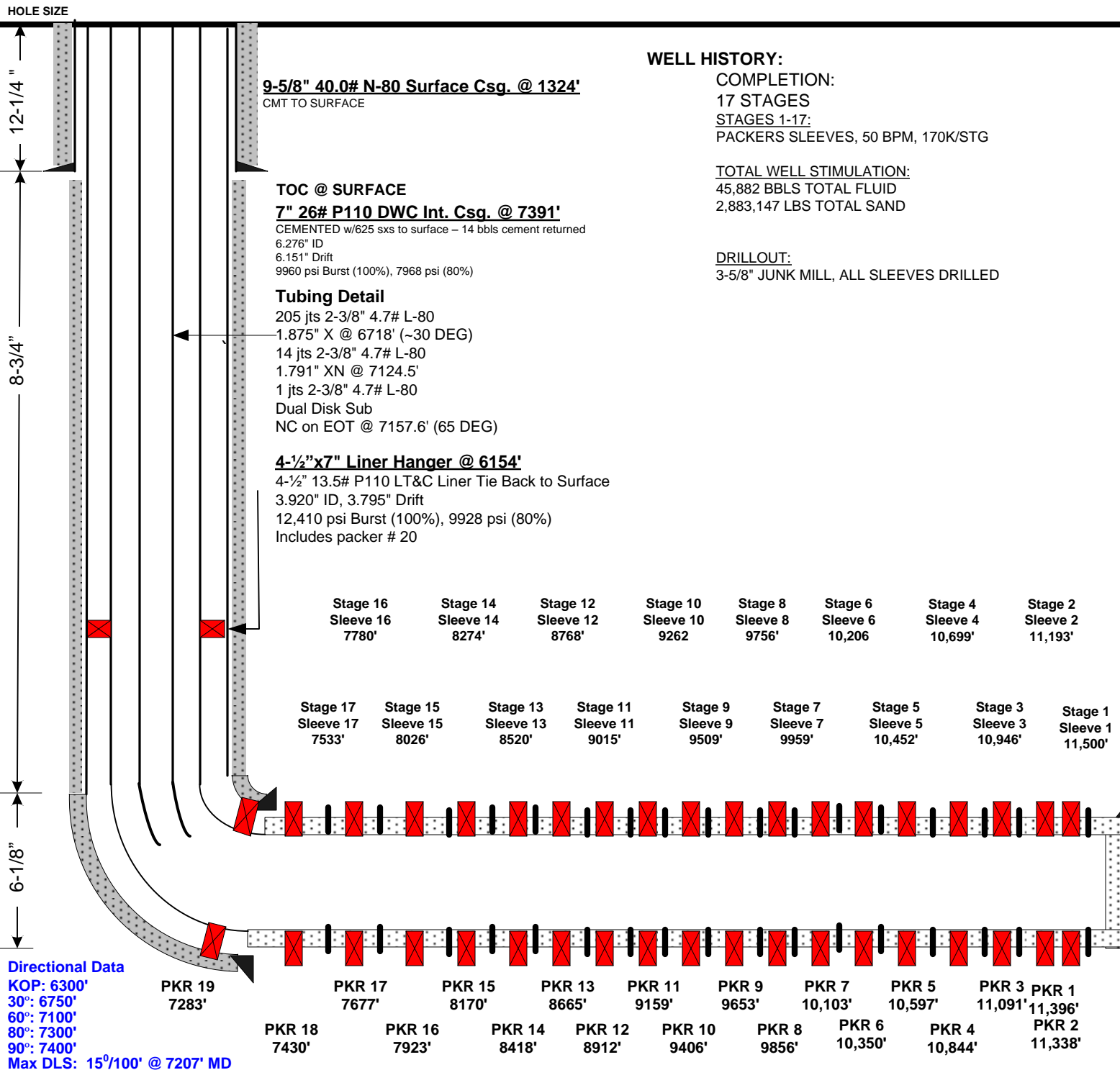
Current Wellbore Schematic

EnCana Oil & Gas (USA) Inc.



WELL : Flanigan 1C-6H – Hydraulic Packers w/ Sleeves
 LOCATION : Lat: 40.08706 Long: -104.58863
 COUNTY : WELD STATE: CO
 FIELD : Wattenberg - NIOBRARA
 ELEVATION : 5016' (GL) 5029' (KB) Δ 13'

SPUD DATE: 8/17/12
 COMPL. DATE: October, 2012
 API #: 05123356930000



WELL HISTORY:

COMPLETION:

17 STAGES

STAGES 1-17:

PACKERS SLEEVES, 50 BPM, 170K/STG

TOTAL WELL STIMULATION:

45,882 BBLs TOTAL FLUID

2,883,147 LBS TOTAL SAND

DRILLOUT:

3-5/8" JUNK MILL, ALL SLEEVES DRILLED

4-1/2" 13.5# P-110 DQX @ 11,615'

NOT CEMENTED

4-1/2" P-110 13.5# Specs: 3.920" ID, 3.795" Drift, 12,410 psi Burst (100%), 9928 psi (80%)

TD: 11,630'

PBTD (FC): 11,605'

TVD: 7020'

BHT 240 F

Lateral Length: 4239' (Int Csg Pt-TD)