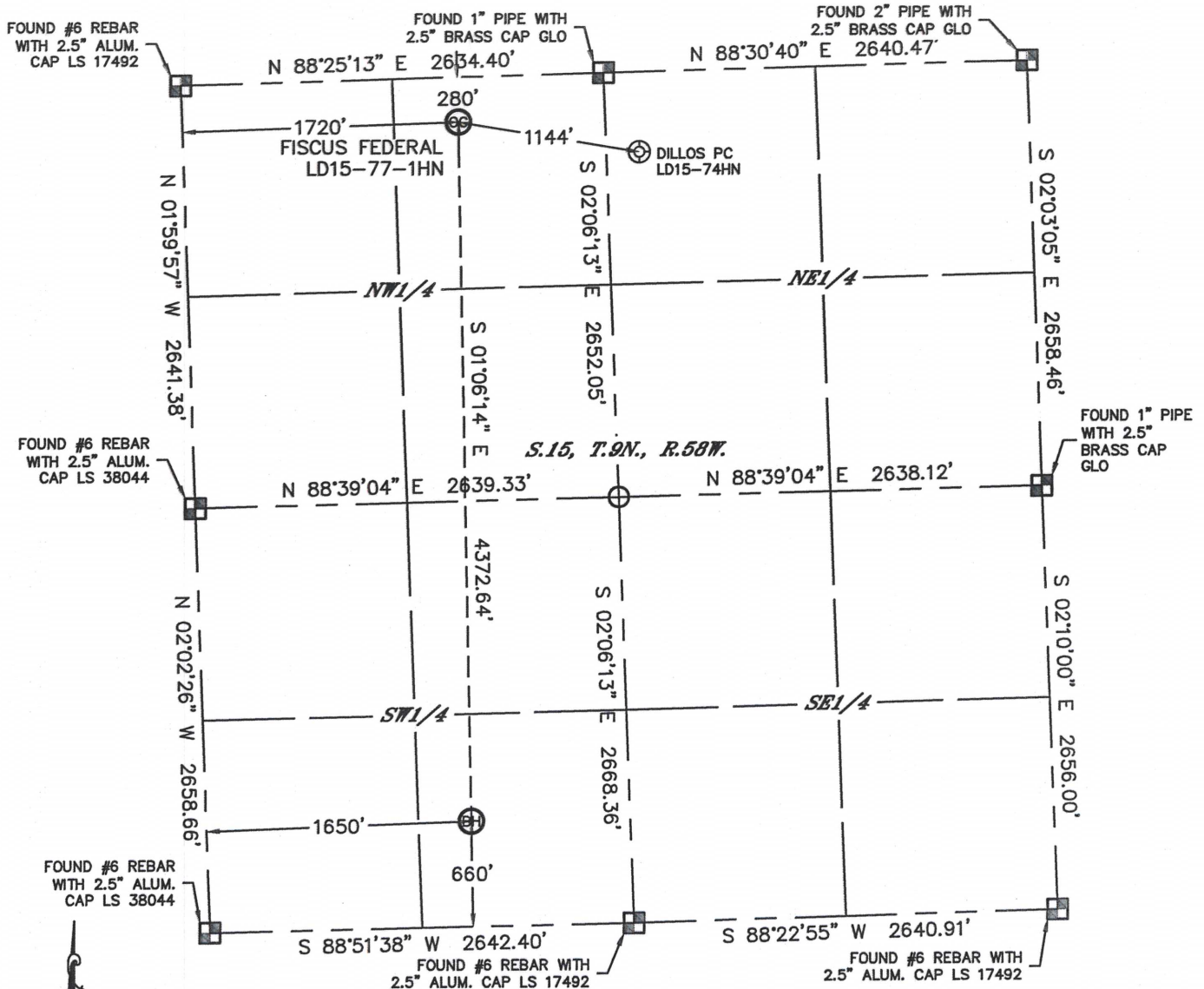


Lat40°, Inc. 1635 Foxtrail Drive, Suite 325 Loveland, CO 970-776-3321

WELL LOCATION CERTIFICATE

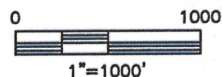
THIS MAP DOES NOT REPRESENT A BOUNDARY SURVEY

SECTION: 15
TOWNSHIP: 9N
RANGE: 58W



In accordance with a request from Matt Verbit with Noble Energy Inc. Lat40°, Inc. has determined the surface location of the FISCUS FEDERAL LD15-77-1HN to be 280' from the NORTH line and 1720' from the WEST line and the bottom hole to be 660' from the SOUTH line and 1650' from the WEST line as measured at right angles from the section lines of Section 15, Township 9 North, Range 58 West of the Sixth Principal Meridian, County of Weld, State of Colorado.

I hereby state that this Well Location Certificate was prepared by me, or under my direct supervision, that the fieldwork was completed on 11/26/2012, for and on behalf of Noble Energy Inc. That this is not a Land Survey Plat or an Improvement Survey Plat, and that it is not to be relied upon for establishment of fence, building, or other future improvement lines.



NOTE:

- 1) Bearings shown are Grid Bearings of the Colorado State Plane Coordinate System, North Zone, North American Datum 1983/2007. The lineal dimensions as contained herein are based upon the "U.S. Survey Foot."
- 2) Ground elevations are based on an observed GPS elevation (NAVD 1988 DATUM).
- 3) NEAREST EXISTING WELL: DILLOS PC LD15-74HN, 1144'
- 4) IMPROVEMENTS: See LOCATION DRAWING for all visible improvements within 400' of disturbed area.
- 5) SURFACE USE: RANGELAND
- 6) INSTRUMENT OPERATOR: BRIAN ROTTINGHAUS

SURFACE LOCATION

LAT: 40.75786°N
LONG: 103.85363°W
PDOP: 1.7
ELEV: 4701'
1/4, 1/4: NE1/4NW1/4
NEAREST PROPERTY LINE: 280' NORTH



BOTTOM HOLE

LAT: 40.74586°N
LONG: 103.85362°W

NOTE

According to Colorado law, you must commence any legal action based upon any defect in this W.L.C. within three years after you discover such defect. In no event, may any action based upon any defect in this survey be commenced more than ten years after the date of the certificate shown hereon. (13-80-105 C.R.S.)

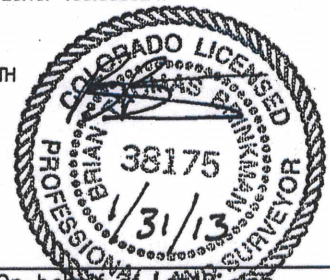
LEGEND

-  = ALIQUOT MONUMENT AS DESCRIBED
-  = CALCULATED POSITION

Brian T. Brinkman—On behalf of Lat40°, Inc.

Colorado Licensed Professional
Land Surveyor No. 38175

DATE: 1/31/2013
PROJECT#: 2012159

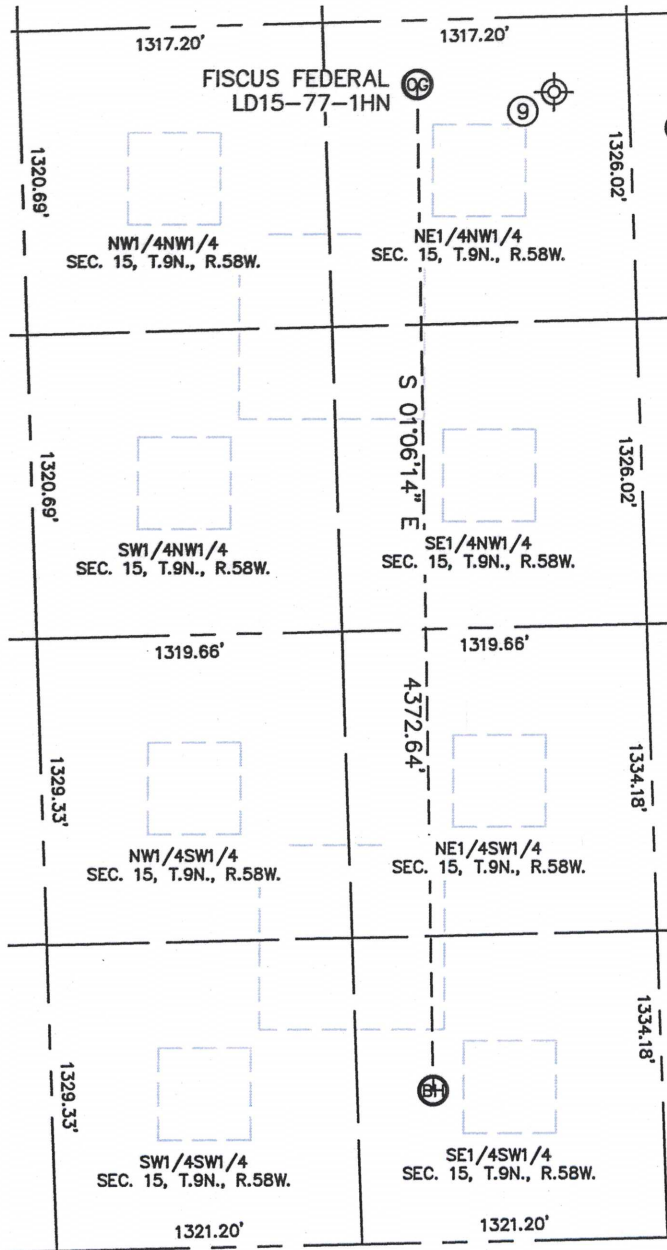


Lat40°, Inc. 1635 Foxtrail Drive, Suite 325 Loveland, CO 970-776-3321

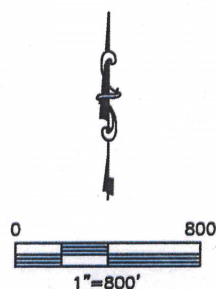
SITE SKETCH

FISCUS FEDERAL LD15-77-1HN

SECTION: 15
TOWNSHIP: 9N
RANGE: 58W



⑨
BRADBURY 1
(Drilled & Abandoned)
NE1/4NW1/4
330' FNL (COGCC)
2310' FWL (COGCC)
LAT-40.75763°N (COGCC)
LONG-103.85148°W (COGCC)
PDOP: N/A
ELEV: 4707' (COGCC)



DATE: 1/31/2013
PROJECT#: 2012159