

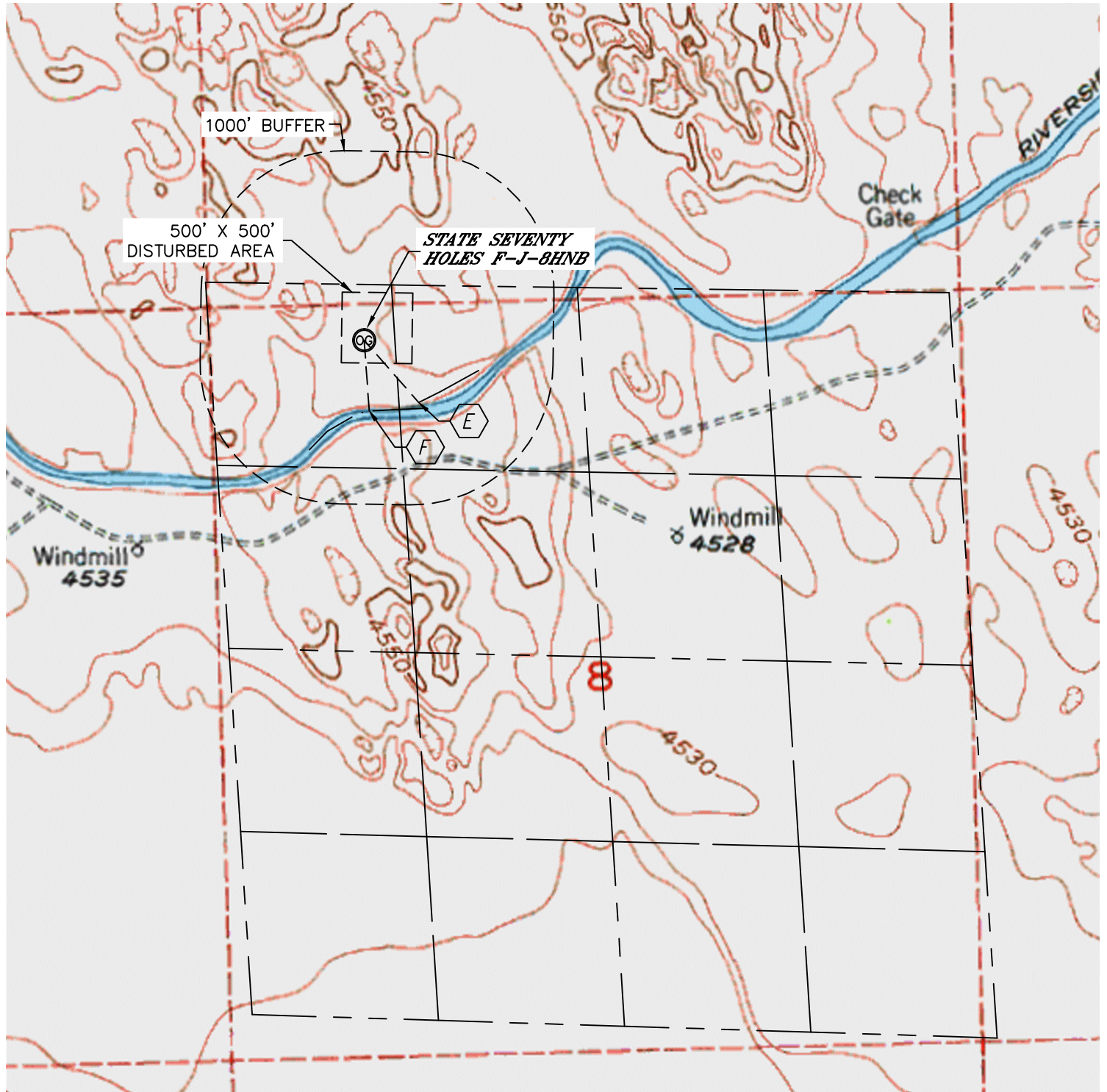


Lat40°, Inc. 1635 Foxtrail Drive, Suite 325 Loveland, CO 970-776-3321

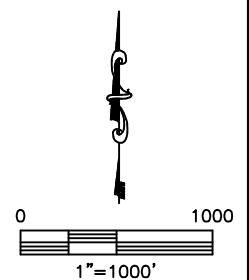
# HYDROLOGY MAP

STATE SEVENTY HOLES F-8 PAD

SECTION: 8  
TOWNSHIP: 4N  
RANGE: 62W



- LOW AREA 585' SE
- CANAL 501' S



DATE: rev 3/12/2013  
PROJECT#: 2011338