

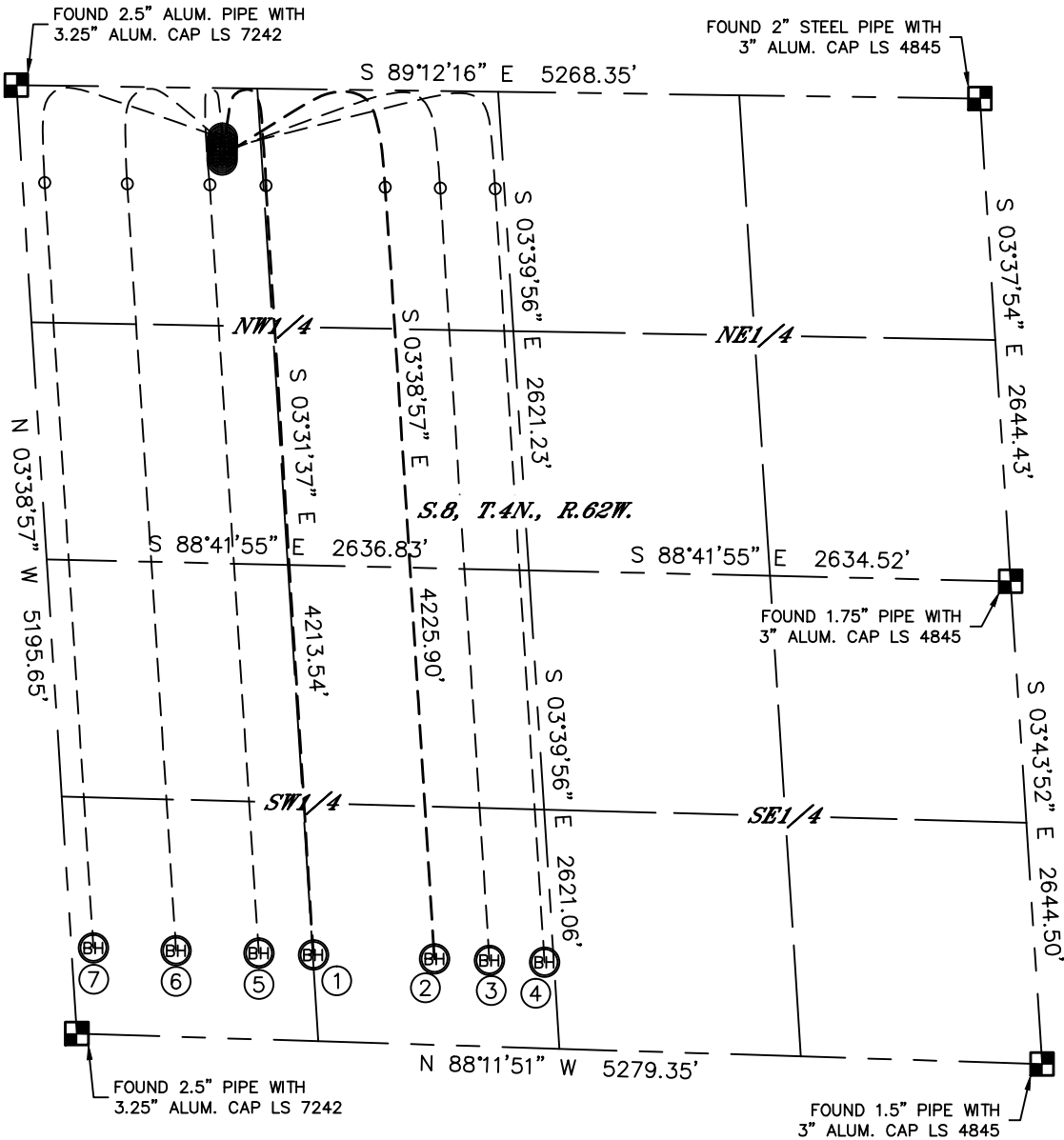


Lat40°, Inc. 1635 Foxtrail Drive, Suite 325 Loveland, CO 970-776-3321

MULTI-WELL PLAN

STATE SEVENTY HOLES F-8 PAD
THIS MAP DOES NOT REPRESENT A BOUNDARY SURVEY

SECTION: 8
TOWNSHIP: 4N
RANGE: 62W



①
-SURFACE LOCATION-
STATE SEVENTY HOLES
F-J-8HNB
395' FNL
1095' FWL
LAT: 40.33316°N
LONG: 104.35483°W

②
-SURFACE LOCATION-
STATE SEVENTY HOLES
21-24-8HNB
375' FNL
1097' FWL
LAT: 40.33322°N
LONG: 104.35482°W

③
-SURFACE LOCATION-
STATE SEVENTY
HOLES A3-08
355' FNL
1099' FWL
LAT: 40.33327°N
LONG: 104.35482°W

④
-SURFACE LOCATION-
STATE SEVENTY
HOLES A4-08
335' FNL
1100' FWL
LAT: 40.33333°N
LONG: 104.35482°W

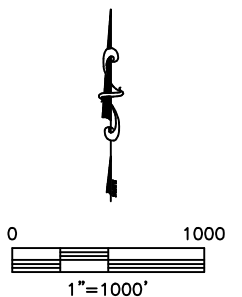
⑤
-SURFACE LOCATION-
STATE SEVENTY
HOLES A5-08
315' FNL
1102' FWL
LAT: 40.33338°N
LONG: 104.35482°W

⑥
-SURFACE LOCATION-
STATE SEVENTY
HOLES A6-08
295' FNL
1103' FWL
LAT: 40.33344°N
LONG: 104.35482°W

⑦
-SURFACE LOCATION-
STATE SEVENTY
HOLES A7-08
275' FNL
1105' FWL
LAT: 40.33349°N
LONG: 104.35481°W

LEGEND

- = ALIQUOT MONUMENT AS DESCRIBED
- = CALCULATED POSITION



DATE: rev 3/12/2013
PROJECT#: 2011338

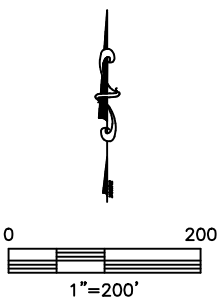
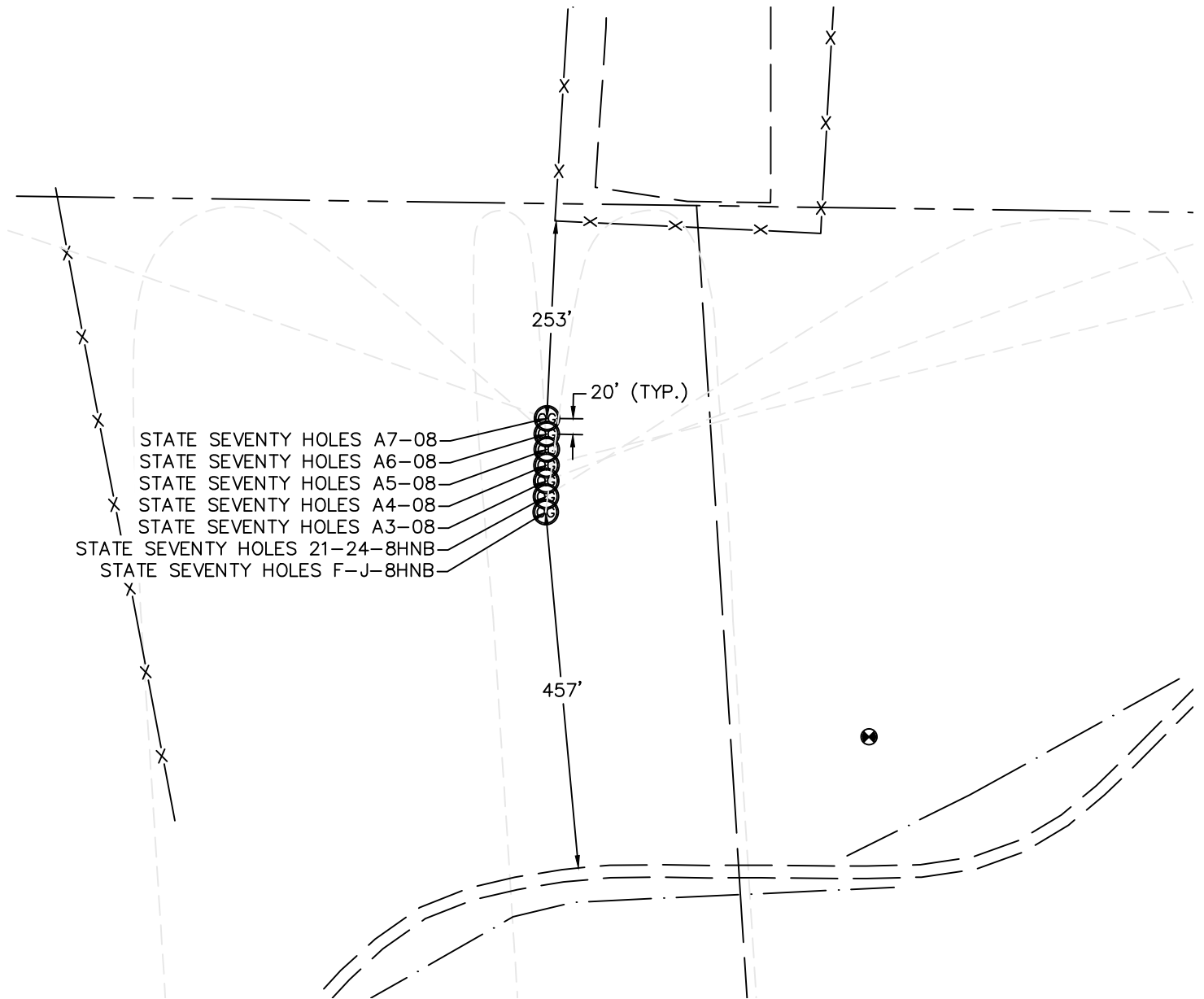


Lat40°, Inc. 1635 Foxtrail Drive, Suite 325 Loveland, CO 970-776-3321

MULTI-WELL PLAN

STATE SEVENTY HOLES F-8 PAD

SECTION: 8
TOWNSHIP: 4N
RANGE: 62W



DATE: rev 3/12/2013
PROJECT#: 2011338