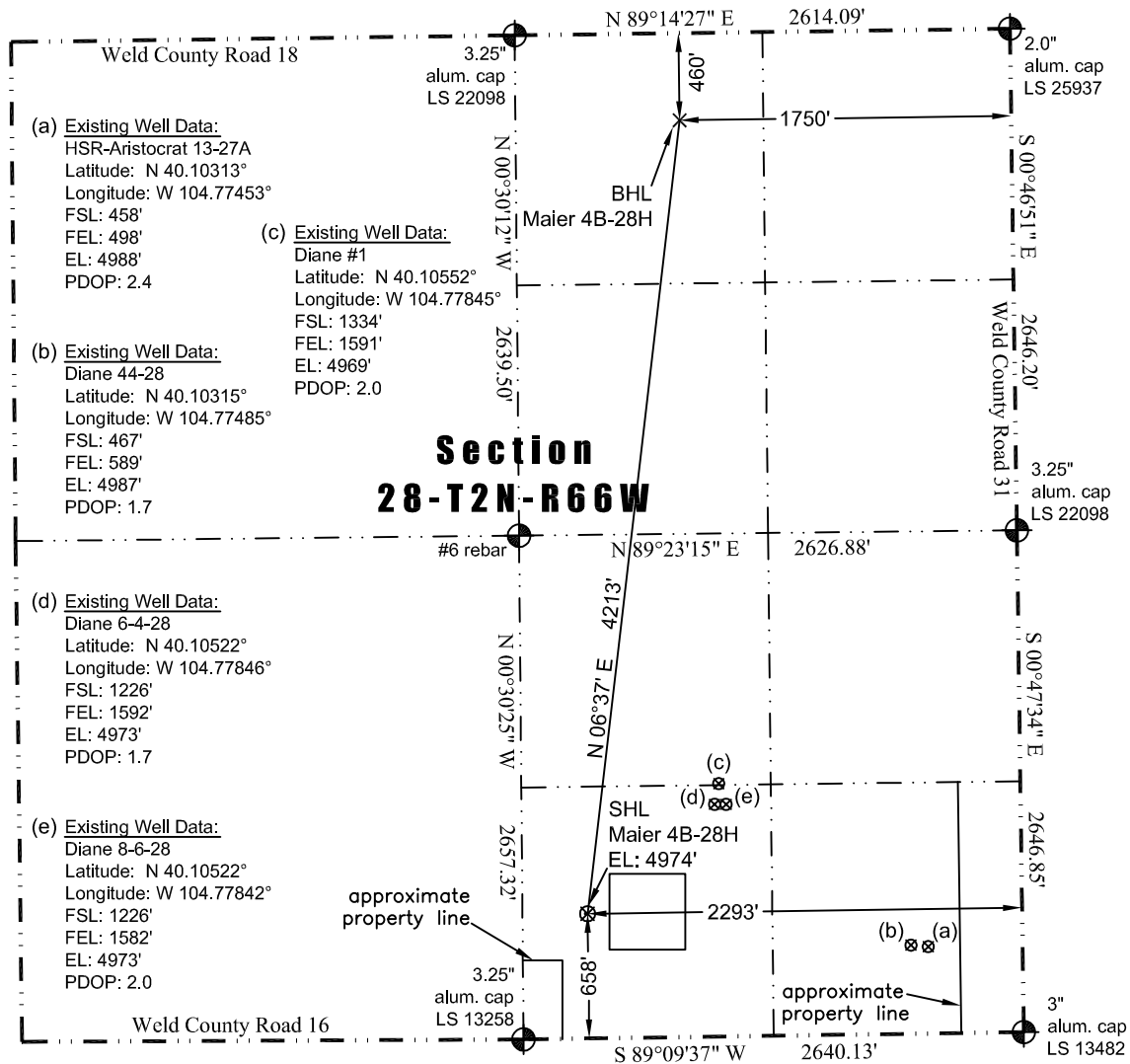


# JR Land Surveying, LLC

8114 Northstar Drive  
Windsor, Colorado 80528  
P. 970-576-4641

## WELL LOCATION CERTIFICATE

THIS MAP DOES NOT REPRESENT A BOUNDARY SURVEY



In accordance with a request from Jay Knutson of EnCana Oil & Gas (USA) Inc., JR Land Surveying, LLC has determined the location of the **Maier 4B-28H** well site to be SHL: 658' FSL and 2293' FEL, (BHL: 460' FNL and 1750' FEL), as measured at ninety (90) degrees from the section lines of Section 28, Township 2 North, Range 66 West, 6th Principal Meridian, Weld County, CO.

### Proposed Surface Hole Data:

Latitude: N 40.10365° (BHL: 40.11513°)  
Longitude: W 104.78095° (BHL: 104.77909°)  
PDOP: 1.6

### Nearest:

Building: 386' southwest  
Public Road: 648' south  
Property Line: 279' southwest  
Existing Well: Diane 6-4-28, 903' northeast

Above Ground Utility: 344' west  
Railroad: 7,670' west  
Well Window: SHL is 115' outside

### Notes:

- 1) Bearings and distances based on NAD 83 Colorado North State Plane Coordinates using RTK GPS observations taken 1/17/13 by operator John Rice.
- 2) Conversion factor to ground (1.0002756760).
- 3) Elevations based on NAVD 88 GPS heights and Geoid 2003 corrections.
- 4) See Location Drawing for visible improvements within 400' of pad site.
- 5) The surface use is a cultivated field.

**NOTICE:** According to Colorado law you MUST commence any legal action based upon any defect in this W.L.C. within three years after you first discover such defect. In no event may any action based upon any defect in this W.L.C. be commenced more than ten years from this said date of the certification shown hereon.

I hereby certify that this Well Location Certificate was prepared by me or under my direct supervision on 1/18/2013 for and on behalf of EnCana Oil & Gas (USA) Inc. That it is not a Land Survey Plat or an Improvement Survey Plat and that it is not to be relied upon for establishment of fences, buildings, or other future improvement lines.

John Robert McGehee LS#38219  
Well: Maier 4B-28H WLC

