

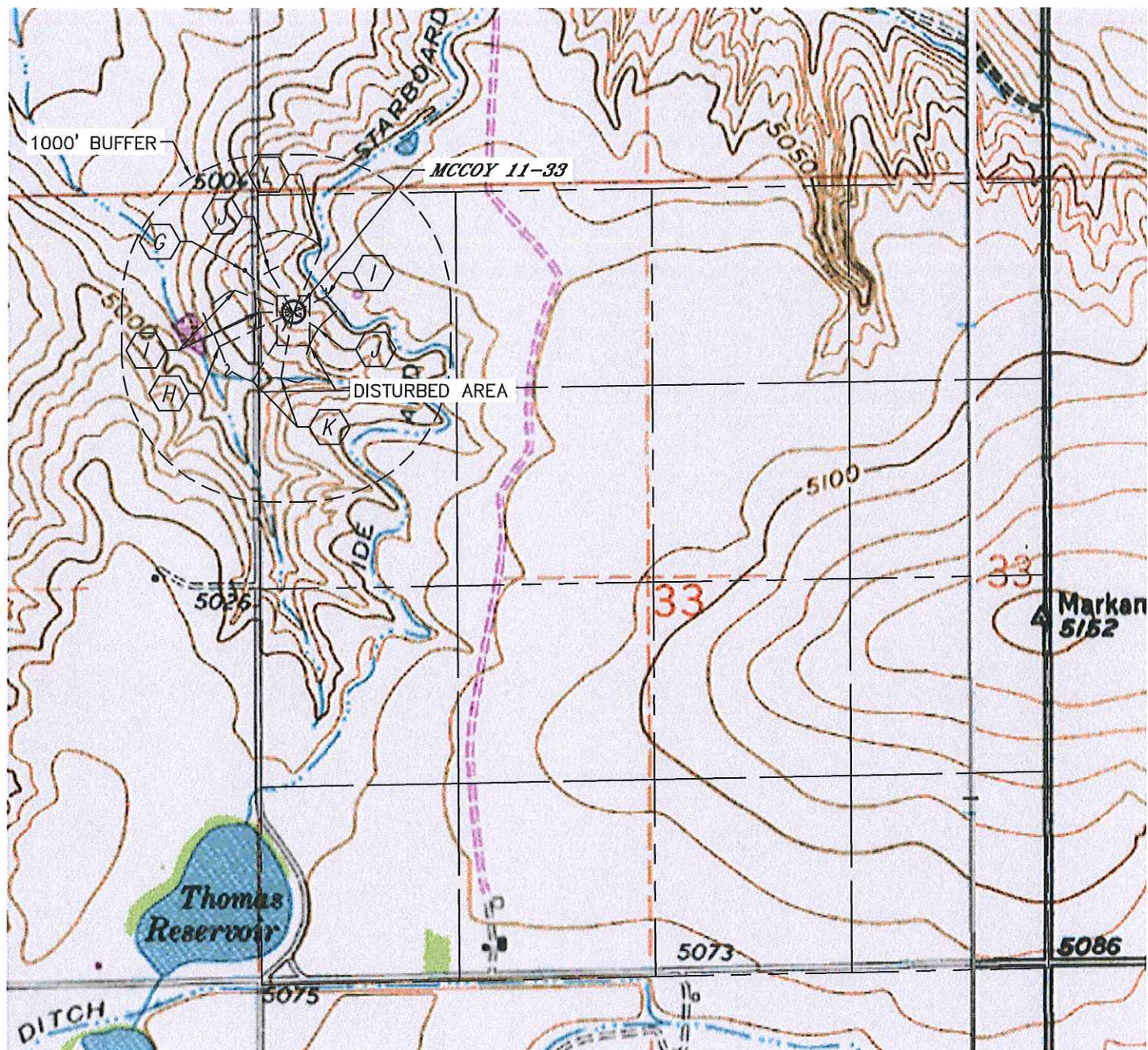


Lat40°, Inc. 1635 Foxtrail Drive, Suite 325 Loveland, CO 970-776-3321

## HYDROLOGY MAP




MCCOY 11-33 PAD

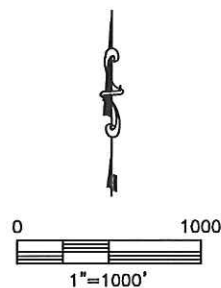
SECTION: 33  
TOWNSHIP: 4N  
RANGE: 68W



### IMPROVEMENTS:

(MEASURED FROM THE PROPOSED MCCOY 11-33 LOCATION)

-  DOMESTIC WATER WELL 434' NW
-  POND 457' SW
-  DITCH 218' & 251' W, 254' NE, 420' NW
-  SWALE 201' SE, 319' NW
-  DRAINAGE 449' S, 537' SW
-  LOW AREA 466' NE



DATE: 12/12/2012  
PROJECT#: 2012087