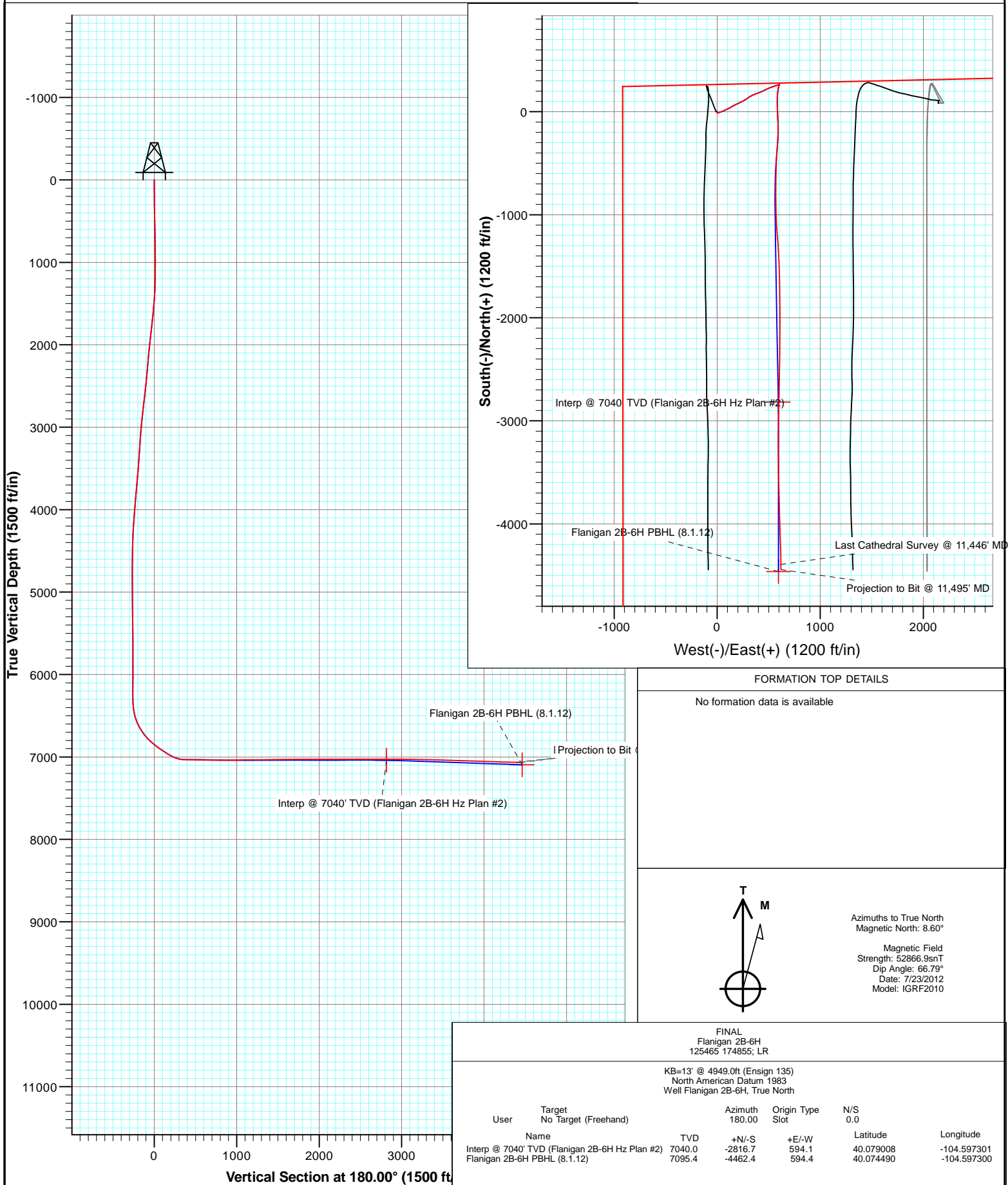


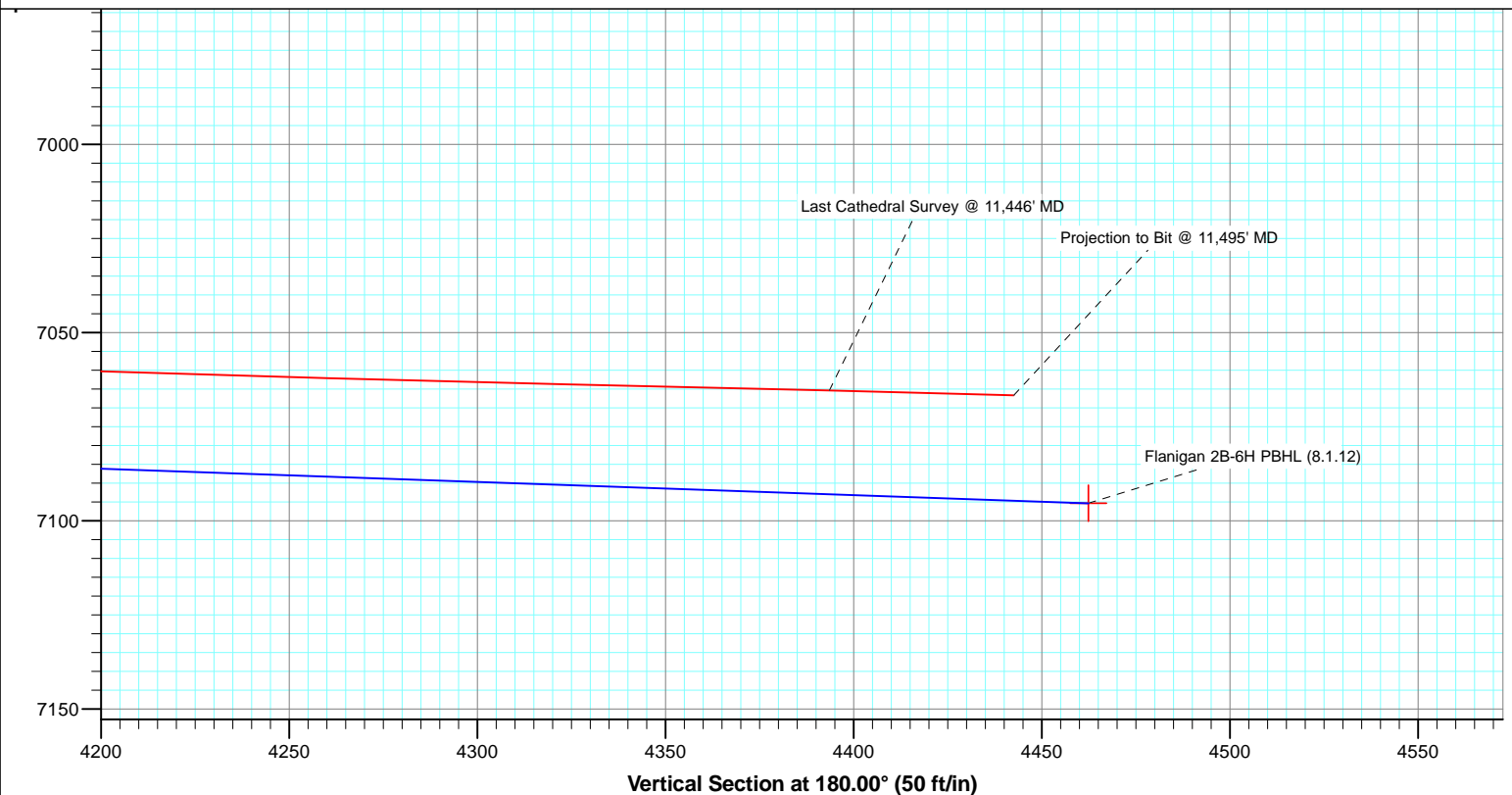
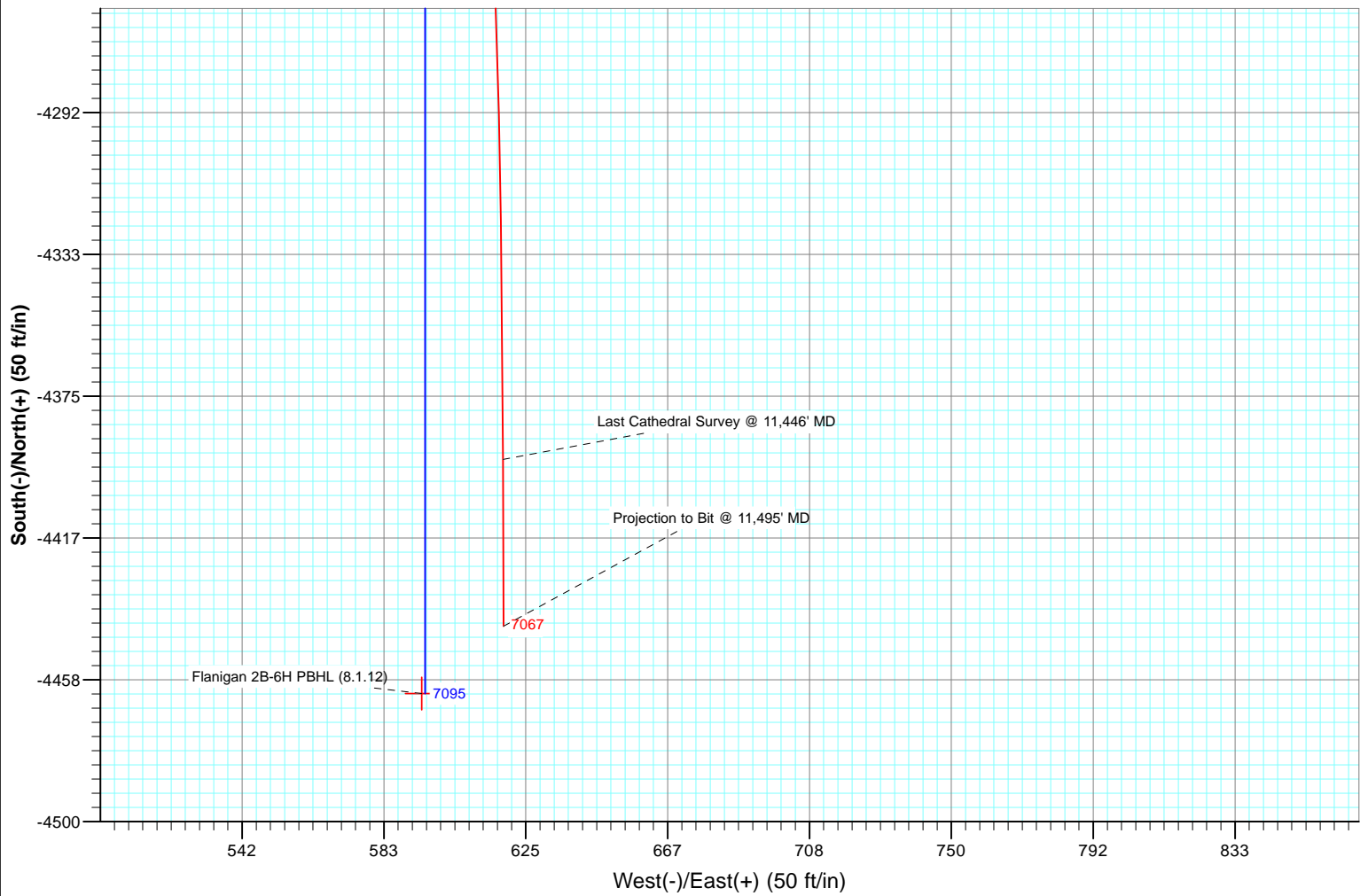


Project: DJ Wattenberg
Site: NWN S6-T1N-R64W (Flanigan)
Well: Flanigan 2B-6H
Wellbore: Hz
Plan: FINAL





Project: DJ Wattenberg
Site: NWN S6-T1N-R64W (Flanigan)
Well: Flanigan 2B-6H
Wellbore: Hz
Plan: FINAL



Cathedral Energy Services

Survey Report

Company:	EnCana Oil & Gas (USA) Inc	Local Co-ordinate Reference:	Well Flanigan 2B-6H
Project:	DJ Wattenberg	TVD Reference:	KB=13' @ 4949.0ft (Ensign 135)
Site:	NWNE S6-T1N-R64W (Flanigan)	MD Reference:	KB=13' @ 4949.0ft (Ensign 135)
Well:	Flanigan 2B-6H	North Reference:	True
Wellbore:	Hz	Survey Calculation Method:	Minimum Curvature
Design:	FINAL	Database:	USA EDM 5000 Multi Users DB

Project	DJ Wattenberg		
Map System:	US State Plane 1983	System Datum:	Mean Sea Level
Geo Datum:	North American Datum 1983		
Map Zone:	Colorado Northern Zone		

Site		NWNE S6-T1N-R64W (Flanigan)			
Site Position:		Northing:	1,275,832.11 ft	Latitude:	40.086970
From:	Lat/Long	Easting:	3,254,152.25 ft	Longitude:	-104.591660
Position Uncertainty:	0.0 ft	Slot Radius:	13.200 in	Grid Convergence:	0.59 °

Well	Flanigan 2B-6H					
Well Position	+N/-S	0.0 ft	Northing:	1,275,726.15 ft	Latitude:	40.086740
	+E/-W	0.0 ft	Easting:	3,251,980.82 ft	Longitude:	-104.599424
Position Uncertainty		0.0 ft	Wellhead Elevation:	ft	Ground Level:	4,936.0 ft

Wellbore	Hz				
Magnetics	Model Name	Sample Date	Declination (°)	Dip Angle (°)	Field Strength (nT)
	IGRF2010	7/23/2012	8.60	66.79	52,867

Design	FINAL				
Audit Notes:					
Version:	1.0	Phase:	ACTUAL	Tie On Depth:	0.0
Vertical Section:	Depth From (TVD)	+N/-S (ft)	+E/-W (ft)	Direction (°)	
	0.0	0.0	0.0	180.00	

Survey Program	Date	8/7/2012			
From (ft)	To (ft)	Survey (Wellbore)	Tool Name	Description	
106.0	11,495.0	Survey #1 (Hz)	MWD	Geolink MWD	

Survey										
Measured Depth (ft)	Inclination (°)	Azimuth (°)	Vertical Depth (ft)	+N/-S (ft)	+E/-W (ft)	Vertical Section (ft)	Dogleg Rate (°/100ft)	Build Rate (°/100ft)	Formations / Comments	
0.0	0.00	0.00	0.0	0.0	0.0	0.0	0.00	0.00		
106.0	0.50	161.70	106.0	-0.4	0.1	0.4	0.47	0.47		
167.0	0.50	178.40	167.0	-1.0	0.2	1.0	0.24	0.00		
259.0	0.70	175.70	259.0	-1.9	0.3	1.9	0.22	0.22		
351.0	0.80	180.30	351.0	-3.1	0.3	3.1	0.13	0.11		
443.0	1.00	189.90	443.0	-4.6	0.2	4.6	0.27	0.22		
535.0	0.90	164.80	535.0	-6.0	0.2	6.0	0.46	-0.11		
627.0	1.20	181.00	626.9	-7.7	0.4	7.7	0.46	0.33		
719.0	1.40	174.60	718.9	-9.8	0.5	9.8	0.27	0.22		
811.0	1.10	143.30	810.9	-11.6	1.1	11.6	0.80	-0.33		
903.0	0.80	105.80	902.9	-12.5	2.3	12.5	0.73	-0.33		
995.0	0.80	80.30	994.9	-12.6	3.5	12.6	0.38	0.00		
1,087.0	0.20	92.60	1,086.9	-12.5	4.3	12.5	0.66	-0.65		

Cathedral Energy Services

Survey Report

Company:	EnCana Oil & Gas (USA) Inc	Local Co-ordinate Reference:	Well Flanigan 2B-6H
Project:	DJ Wattenberg	TVD Reference:	KB=13' @ 4949.0ft (Ensign 135)
Site:	NWNE S6-T1N-R64W (Flanigan)	MD Reference:	KB=13' @ 4949.0ft (Ensign 135)
Well:	Flanigan 2B-6H	North Reference:	True
Wellbore:	Hz	Survey Calculation Method:	Minimum Curvature
Design:	FINAL	Database:	USA EDM 5000 Multi Users DB

Survey

Measured Depth (ft)	Inclination (°)	Azimuth (°)	Vertical Depth (ft)	+N/-S (ft)	+E/-W (ft)	Vertical Section (ft)	Dogleg Rate (°/100ft)	Build Rate (°/100ft)	Formations / Comments
1,179.0	3.10	68.00	1,178.8	-11.5	6.8	11.5	3.17	3.15	
1,271.0	6.50	73.90	1,270.5	-9.2	14.1	9.2	3.73	3.70	
1,363.0	8.60	69.20	1,361.7	-5.3	25.5	5.3	2.38	2.28	
1,455.0	10.90	71.40	1,452.4	-0.1	40.2	0.1	2.53	2.50	
1,549.0	13.10	66.50	1,544.3	7.0	58.4	-7.0	2.58	2.34	
1,644.0	13.10	64.40	1,636.8	16.0	78.0	-16.0	0.50	0.00	
1,739.0	13.50	63.70	1,729.3	25.5	97.6	-25.5	0.45	0.42	
1,834.0	13.60	62.40	1,821.6	35.6	117.5	-35.6	0.34	0.11	
1,929.0	13.70	61.20	1,914.0	46.2	137.2	-46.2	0.32	0.11	
2,024.0	12.90	58.00	2,006.4	57.3	156.1	-57.3	1.14	-0.84	
2,119.0	12.00	65.90	2,099.2	66.9	174.1	-66.9	2.03	-0.95	
2,213.0	11.60	63.70	2,191.2	75.1	191.5	-75.1	0.64	-0.43	
2,308.0	11.70	65.10	2,284.2	83.4	208.8	-83.4	0.32	0.11	
2,401.0	11.30	63.60	2,375.4	91.4	225.5	-91.4	0.54	-0.43	
2,498.0	12.00	62.00	2,470.4	100.4	242.9	-100.4	0.79	0.72	
2,593.0	12.60	63.60	2,563.2	109.6	260.9	-109.6	0.73	0.63	
2,688.0	11.80	56.90	2,656.0	119.5	278.3	-119.5	1.71	-0.84	
2,783.0	11.70	55.80	2,749.1	130.2	294.4	-130.2	0.26	-0.11	
2,877.0	12.10	51.90	2,841.0	141.7	310.1	-141.7	0.96	0.43	
2,972.0	12.10	59.80	2,933.9	152.8	326.5	-152.8	1.74	0.00	
3,067.0	11.80	68.10	3,026.9	161.5	344.1	-161.5	1.83	-0.32	
3,162.0	11.40	71.80	3,119.9	168.0	362.1	-168.0	0.89	-0.42	
3,256.0	10.60	70.10	3,212.2	173.9	379.0	-173.9	0.92	-0.85	
3,351.0	10.90	67.40	3,305.5	180.3	395.5	-180.3	0.62	0.32	
3,446.0	10.80	65.90	3,398.8	187.4	412.0	-187.4	0.32	-0.11	
3,541.0	10.50	68.60	3,492.2	194.2	428.1	-194.2	0.61	-0.32	
3,635.0	11.30	63.90	3,584.5	201.3	444.4	-201.3	1.27	0.85	
3,730.0	11.70	62.40	3,677.6	209.9	461.3	-209.9	0.53	0.42	
3,825.0	12.70	66.50	3,770.5	218.5	479.4	-218.5	1.39	1.05	
3,920.0	12.30	65.80	3,863.2	226.8	498.2	-226.8	0.45	-0.42	
4,015.0	12.60	72.10	3,956.0	234.2	517.3	-234.2	1.46	0.32	
4,109.0	12.70	70.30	4,047.7	240.8	536.8	-240.8	0.43	0.11	
4,204.0	12.20	67.50	4,140.5	248.2	555.9	-248.2	0.82	-0.53	
4,299.0	10.50	70.60	4,233.6	254.9	573.3	-254.9	1.90	-1.79	
4,394.0	8.30	79.80	4,327.3	259.0	588.2	-259.0	2.80	-2.32	
4,489.0	5.10	70.30	4,421.7	261.6	599.0	-261.6	3.55	-3.37	
4,583.0	2.30	32.20	4,515.5	264.6	603.9	-264.6	3.81	-2.98	
4,678.0	0.90	265.30	4,610.5	266.2	604.2	-266.2	3.08	-1.47	
4,773.0	1.00	266.90	4,705.4	266.1	602.6	-266.1	0.11	0.11	
4,868.0	0.70	294.90	4,800.4	266.3	601.3	-266.3	0.53	-0.32	
4,963.0	0.70	180.00	4,895.4	265.9	600.7	-265.9	1.24	0.00	
5,058.0	0.70	356.70	4,990.4	265.9	600.7	-265.9	1.47	0.00	
5,153.0	1.60	182.30	5,085.4	265.2	600.6	-265.2	2.42	0.95	
5,248.0	1.00	162.90	5,180.4	263.1	600.8	-263.1	0.77	-0.63	
5,342.0	0.40	106.50	5,274.4	262.2	601.4	-262.2	0.90	-0.64	
5,437.0	1.10	142.70	5,369.4	261.4	602.2	-261.4	0.86	0.74	
5,532.0	1.70	148.20	5,464.3	259.4	603.5	-259.4	0.65	0.63	
5,627.0	0.90	136.60	5,559.3	257.7	604.8	-257.7	0.88	-0.84	
5,722.0	0.50	2.90	5,654.3	257.6	605.3	-257.6	1.37	-0.42	
5,817.0	0.80	3.30	5,749.3	258.6	605.4	-258.6	0.32	0.32	
5,912.0	1.40	288.70	5,844.3	259.7	604.3	-259.7	1.49	0.63	
6,007.0	1.10	259.30	5,939.3	259.9	602.3	-259.9	0.73	-0.32	
6,102.0	0.80	250.90	6,034.3	259.5	600.8	-259.5	0.35	-0.32	

Cathedral Energy Services

Survey Report

Company:	EnCana Oil & Gas (USA) Inc	Local Co-ordinate Reference:	Well Flanigan 2B-6H
Project:	DJ Wattenberg	TVD Reference:	KB=13' @ 4949.0ft (Ensign 135)
Site:	NWNE S6-T1N-R64W (Flanigan)	MD Reference:	KB=13' @ 4949.0ft (Ensign 135)
Well:	Flanigan 2B-6H	North Reference:	True
Wellbore:	Hz	Survey Calculation Method:	Minimum Curvature
Design:	FINAL	Database:	USA EDM 5000 Multi Users DB

Survey

Measured Depth (ft)	Inclination (°)	Azimuth (°)	Vertical Depth (ft)	+N/-S (ft)	+E/-W (ft)	Vertical Section (ft)	Dogleg Rate (°/100ft)	Build Rate (°/100ft)	Formations / Comments
6,196.0	0.40	259.00	6,128.3	259.2	599.8	-259.2	0.43	-0.43	
6,291.0	0.00	239.00	6,223.3	259.2	599.5	-259.2	0.42	-0.42	
6,354.0	0.10	122.40	6,286.3	259.1	599.6	-259.1	0.16	0.16	
6,417.0	1.70	173.70	6,349.3	258.2	599.7	-258.2	2.60	2.54	
6,449.0	4.60	190.70	6,381.2	256.4	599.5	-256.4	9.42	9.06	
6,481.0	8.10	193.70	6,413.0	253.0	598.8	-253.0	10.98	10.94	
6,512.0	10.90	195.00	6,443.6	248.0	597.5	-248.0	9.06	9.03	
6,544.0	13.50	195.70	6,474.8	241.5	595.7	-241.5	8.14	8.12	
6,575.0	16.00	191.80	6,504.8	233.8	593.8	-233.8	8.67	8.06	
6,607.0	18.20	191.10	6,535.4	224.6	592.0	-224.6	6.90	6.87	
6,639.0	20.90	190.70	6,565.6	214.1	589.9	-214.1	8.45	8.44	
6,670.0	23.70	188.70	6,594.2	202.5	588.0	-202.5	9.36	9.03	
6,702.0	27.00	186.40	6,623.2	188.9	586.2	-188.9	10.76	10.31	
6,733.0	30.50	184.30	6,650.3	174.1	584.8	-174.1	11.75	11.29	
6,765.0	33.60	182.70	6,677.4	157.1	583.8	-157.1	10.04	9.69	
6,797.0	35.90	181.30	6,703.7	138.9	583.2	-138.9	7.61	7.19	
6,828.0	38.00	180.10	6,728.5	120.3	582.9	-120.3	7.16	6.77	
6,860.0	39.80	179.80	6,753.4	100.2	583.0	-100.2	5.66	5.62	
6,892.0	42.50	179.30	6,777.5	79.1	583.1	-79.1	8.50	8.44	
6,923.0	45.70	178.50	6,799.8	57.6	583.5	-57.6	10.48	10.32	
6,955.0	49.10	179.10	6,821.4	34.0	584.0	-34.0	10.71	10.62	
6,987.0	51.40	178.20	6,841.9	9.4	584.6	-9.4	7.51	7.19	
7,018.0	52.80	177.50	6,860.9	-15.0	585.5	15.0	4.85	4.52	
7,050.0	53.60	177.70	6,880.1	-40.6	586.6	40.6	2.55	2.50	
7,081.0	54.70	177.00	6,898.3	-65.7	587.8	65.7	3.99	3.55	
7,113.0	55.40	177.30	6,916.6	-91.9	589.1	91.9	2.32	2.19	
7,145.0	56.60	177.80	6,934.5	-118.4	590.2	118.4	3.97	3.75	
7,176.0	57.50	177.70	6,951.3	-144.4	591.2	144.4	2.92	2.90	
7,208.0	58.60	179.20	6,968.3	-171.5	592.0	171.5	5.26	3.44	
7,240.0	60.40	181.70	6,984.5	-199.1	591.7	199.1	8.77	5.62	
7,271.0	64.90	183.20	6,998.8	-226.6	590.6	226.6	15.14	14.52	
7,303.0	69.80	183.40	7,011.1	-256.1	588.9	256.1	15.32	15.31	
7,334.0	74.60	183.80	7,020.5	-285.5	587.0	285.5	15.53	15.48	
7,374.0	81.80	184.30	7,028.7	-324.6	584.2	324.6	18.04	18.00	
7,425.0	90.20	184.30	7,032.3	-375.3	580.4	375.3	16.47	16.47	
7,426.0	89.00	183.80	7,032.3	-376.3	580.4	376.3	130.00	-120.00	
7,458.0	89.30	184.10	7,032.8	-408.2	578.1	408.2	1.33	0.94	
7,521.0	89.20	182.40	7,033.6	-471.1	574.6	471.1	2.70	-0.16	
7,584.0	88.20	181.40	7,035.0	-534.0	572.5	534.0	2.24	-1.59	
7,647.0	88.10	181.10	7,037.0	-597.0	571.1	597.0	0.50	-0.16	
7,710.0	88.10	180.80	7,039.1	-659.9	570.1	659.9	0.48	0.00	
7,774.0	89.10	180.70	7,040.7	-723.9	569.2	723.9	1.57	1.56	
7,837.0	90.30	180.70	7,041.0	-786.9	568.5	786.9	1.90	1.90	
7,900.0	90.90	179.30	7,040.4	-849.9	568.5	849.9	2.42	0.95	
7,963.0	91.40	179.10	7,039.1	-912.9	569.3	912.9	0.85	0.79	
8,027.0	91.60	178.00	7,037.4	-976.8	571.0	976.8	1.75	0.31	
8,090.0	91.10	177.10	7,035.9	-1,039.7	573.7	1,039.7	1.63	-0.79	
8,153.0	90.50	177.00	7,035.1	-1,102.7	576.9	1,102.7	0.97	-0.95	
8,216.0	89.90	176.00	7,034.8	-1,165.5	580.7	1,165.5	1.85	-0.95	
8,280.0	89.60	175.60	7,035.1	-1,229.4	585.4	1,229.4	0.78	-0.47	
8,343.0	90.80	175.60	7,034.9	-1,292.2	590.3	1,292.2	1.90	1.90	
8,406.0	91.10	176.60	7,033.9	-1,355.0	594.5	1,355.0	1.66	0.48	
8,469.0	91.00	177.30	7,032.7	-1,417.9	597.9	1,417.9	1.12	-0.16	

Cathedral Energy Services

Survey Report

Company:	EnCana Oil & Gas (USA) Inc	Local Co-ordinate Reference:	Well Flanigan 2B-6H
Project:	DJ Wattenberg	TVD Reference:	KB=13' @ 4949.0ft (Ensign 135)
Site:	NWNE S6-T1N-R64W (Flanigan)	MD Reference:	KB=13' @ 4949.0ft (Ensign 135)
Well:	Flanigan 2B-6H	North Reference:	True
Wellbore:	Hz	Survey Calculation Method:	Minimum Curvature
Design:	FINAL	Database:	USA EDM 5000 Multi Users DB

Survey									
Measured Depth (ft)	Inclination (°)	Azimuth (°)	Vertical Depth (ft)	+N/-S (ft)	+E/-W (ft)	Vertical Section (ft)	Dogleg Rate (°/100ft)	Build Rate (°/100ft)	Formations / Comments
8,532.0	90.60	178.10	7,031.8	-1,480.9	600.4	1,480.9	1.42	-0.63	
8,596.0	90.90	178.50	7,031.0	-1,544.8	602.3	1,544.8	0.78	0.47	
8,659.0	91.30	178.90	7,029.8	-1,607.8	603.8	1,607.8	0.90	0.63	
8,722.0	90.40	178.50	7,028.8	-1,670.8	605.2	1,670.8	1.56	-1.43	
8,785.0	90.30	178.20	7,028.5	-1,733.7	607.0	1,733.7	0.50	-0.16	
8,848.0	90.20	179.20	7,028.2	-1,796.7	608.4	1,796.7	1.60	-0.16	
8,911.0	90.20	180.30	7,028.0	-1,859.7	608.7	1,859.7	1.75	0.00	
8,975.0	88.80	180.20	7,028.5	-1,923.7	608.4	1,923.7	2.19	-2.19	
9,038.0	89.70	180.50	7,029.3	-1,986.7	608.0	1,986.7	1.51	1.43	
9,101.0	90.00	180.00	7,029.5	-2,049.7	607.8	2,049.7	0.93	0.48	
9,164.0	90.10	179.90	7,029.5	-2,112.7	607.8	2,112.7	0.22	0.16	
9,228.0	90.30	179.70	7,029.2	-2,176.7	608.0	2,176.7	0.44	0.31	
9,291.0	91.10	179.90	7,028.5	-2,239.7	608.3	2,239.7	1.31	1.27	
9,354.0	90.40	180.40	7,027.6	-2,302.7	608.1	2,302.7	1.37	-1.11	
9,417.0	90.10	181.40	7,027.4	-2,365.7	607.1	2,365.7	1.66	-0.48	
9,481.0	90.60	181.30	7,027.0	-2,429.7	605.6	2,429.7	0.80	0.78	
9,544.0	89.00	181.00	7,027.2	-2,492.7	604.3	2,492.7	2.58	-2.54	
9,607.0	89.50	180.90	7,028.0	-2,555.6	603.3	2,555.6	0.81	0.79	
9,670.0	89.80	181.20	7,028.4	-2,618.6	602.1	2,618.6	0.67	0.48	
9,733.0	90.10	180.80	7,028.5	-2,681.6	601.0	2,681.6	0.79	0.48	
9,797.0	90.90	180.70	7,027.9	-2,745.6	600.2	2,745.6	1.26	1.25	
9,860.0	90.60	181.40	7,027.1	-2,808.6	599.0	2,808.6	1.21	-0.48	
9,868.2	90.50	181.37	7,027.0	-2,816.8	598.8	2,816.8	1.31	-1.27	Interp @ 7040' TVD (Flanigan 2B-6H Hz Plan #2)
9,923.0	89.80	181.20	7,026.9	-2,871.6	597.6	2,871.6	1.31	-1.27	
9,986.0	89.10	181.00	7,027.5	-2,934.6	596.4	2,934.6	1.16	-1.11	
10,050.0	89.20	180.90	7,028.4	-2,998.6	595.3	2,998.6	0.22	0.16	
10,113.0	89.50	180.90	7,029.1	-3,061.5	594.4	3,061.5	0.48	0.48	
10,176.0	88.70	180.60	7,030.1	-3,124.5	593.5	3,124.5	1.36	-1.27	
10,239.0	88.80	180.50	7,031.5	-3,187.5	592.9	3,187.5	0.22	0.16	
10,302.0	89.10	180.30	7,032.6	-3,250.5	592.5	3,250.5	0.57	0.48	
10,365.0	88.60	180.30	7,033.9	-3,313.5	592.2	3,313.5	0.79	-0.79	
10,428.0	89.40	179.20	7,035.0	-3,376.5	592.4	3,376.5	2.16	1.27	
10,491.0	89.70	179.00	7,035.5	-3,439.5	593.4	3,439.5	0.57	0.48	
10,554.0	88.60	178.90	7,036.4	-3,502.4	594.6	3,502.4	1.75	-1.75	
10,618.0	88.50	178.80	7,038.1	-3,566.4	595.9	3,566.4	0.22	-0.16	
10,681.0	87.80	178.90	7,040.1	-3,629.4	597.1	3,629.4	1.12	-1.11	
10,744.0	87.60	178.60	7,042.6	-3,692.3	598.5	3,692.3	0.57	-0.32	
10,807.0	87.10	178.30	7,045.5	-3,755.2	600.2	3,755.2	0.93	-0.79	
10,870.0	87.80	178.50	7,048.3	-3,818.1	602.0	3,818.1	1.16	1.11	
10,934.0	87.80	178.40	7,050.8	-3,882.0	603.7	3,882.0	0.16	0.00	
10,997.0	87.70	178.40	7,053.3	-3,945.0	605.4	3,945.0	0.16	-0.16	
11,060.0	87.60	178.10	7,055.8	-4,007.9	607.4	4,007.9	0.50	-0.16	
11,123.0	89.00	178.10	7,057.7	-4,070.8	609.5	4,070.8	2.22	2.22	
11,186.0	89.00	177.60	7,058.8	-4,133.8	611.8	4,133.8	0.79	0.00	
11,249.0	88.30	178.30	7,060.3	-4,196.7	614.1	4,196.7	1.57	-1.11	
11,313.0	88.30	178.00	7,062.2	-4,260.7	616.1	4,260.7	0.47	0.00	
11,376.0	88.80	179.20	7,063.8	-4,323.6	617.7	4,323.6	2.06	0.79	
11,446.0	88.50	179.80	7,065.4	-4,393.6	618.3	4,393.6	0.96	-0.43	Last Cathedral Survey @ 11,446' MD
11,495.0	88.50	179.80	7,066.7	-4,442.6	618.5	4,442.6	0.00	0.00	Projection to Bit @ 11,495' MD - Flanigan 2B-6H

Cathedral Energy Services

Survey Report

Company:	EnCana Oil & Gas (USA) Inc	Local Co-ordinate Reference:	Well Flanigan 2B-6H
Project:	DJ Wattenberg	TVD Reference:	KB=13' @ 4949.0ft (Ensign 135)
Site:	NWNE S6-T1N-R64W (Flanigan)	MD Reference:	KB=13' @ 4949.0ft (Ensign 135)
Well:	Flanigan 2B-6H	North Reference:	True
Wellbore:	Hz	Survey Calculation Method:	Minimum Curvature
Design:	FINAL	Database:	USA EDM 5000 Multi Users DB

Targets									
Target Name	Dip Angle	Dip Dir.	TVD	+N/-S	+E/-W	Northing	Easting	Latitude	Longitude
- hit/miss target	(°)	(°)	(ft)	(ft)	(ft)	(ft)	(ft)		
- Shape									
Interp @ 7040' TVD (Fla	0.00	0.00	7,040.0	-2,816.7	594.1	1,272,915.61	3,252,603.54	40.079008	-104.597301
- actual wellpath misses target center by 13.8ft at 9868.1ft MD (7027.0 TVD, -2816.7 N, 598.8 E)									
- Point									
Flanigan 2B-6H PBHL (€	0.00	0.00	7,095.4	-4,462.4	594.4	1,271,270.04	3,252,620.56	40.074490	-104.597300
- actual wellpath misses target center by 42.3ft at 11495.0ft MD (7066.7 TVD, -4442.6 N, 618.5 E)									
- Point									

Design Annotations					
Measured Depth	Vertical Depth	Local Coordinates			
(ft)	(ft)	+N/-S	+E/-W		
		(ft)	(ft)	Comment	
11,446.0	7,065.4	-4,393.6	618.3	Last Cathedral Survey @ 11,446' MD	
11,495.0	7,066.7	-4,442.6	618.5	Projection to Bit @ 11,495' MD	

Checked By: _____ Approved By: _____ Date: _____