

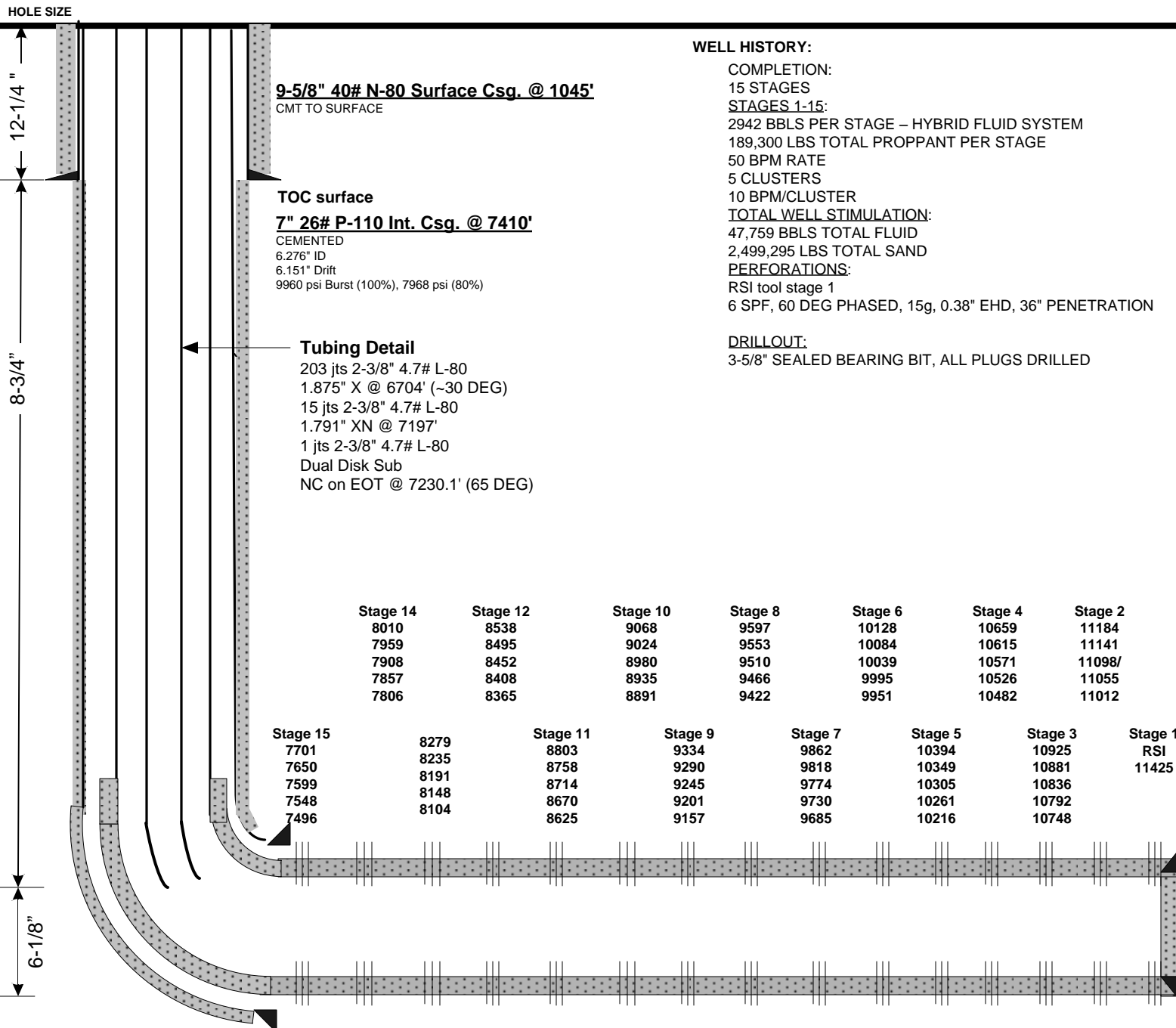
# Current Wellbore Schematic

EnCana Oil & Gas (USA) Inc.



**WELL** : Flanigan 2B-6H – Cemented Perf/Plug  
**LOCATION** : Lat: 40.08674 Long: -104.59936  
**COUNTY** : WELD **STATE**: CO  
**FIELD** : Wattenburg - NIOBRARA  
**ELEVATION** : 4936' (GL) 4949' (KB) Δ 13'

**SPUD DATE:** 7/25/12  
**COMPL. DATE:** 9/24/12  
**API #:** 05-123-35691



## Directional Data

KOP: 6450'  
 30°: 6730'  
 60°: 7240'  
 80°: 7370'  
 90°: 7425'  
 Max DLS: 18.04°/100' @ 7374' MD

**Lateral Length: 4064' (Int. Shoe-TD)**

**4-1/2" 13.5# P-110 DQX Prod. Csg. @ 11,479'**  
 CEMENTED  
 3.920" ID  
 3.795" Drift  
 12,410 psi Burst (100%), 9928 psi (80%)

MD: 11,479'  
 PBTD (FC): 11,475'  
 TVD: ~7040'  
 BHT: 240 F