

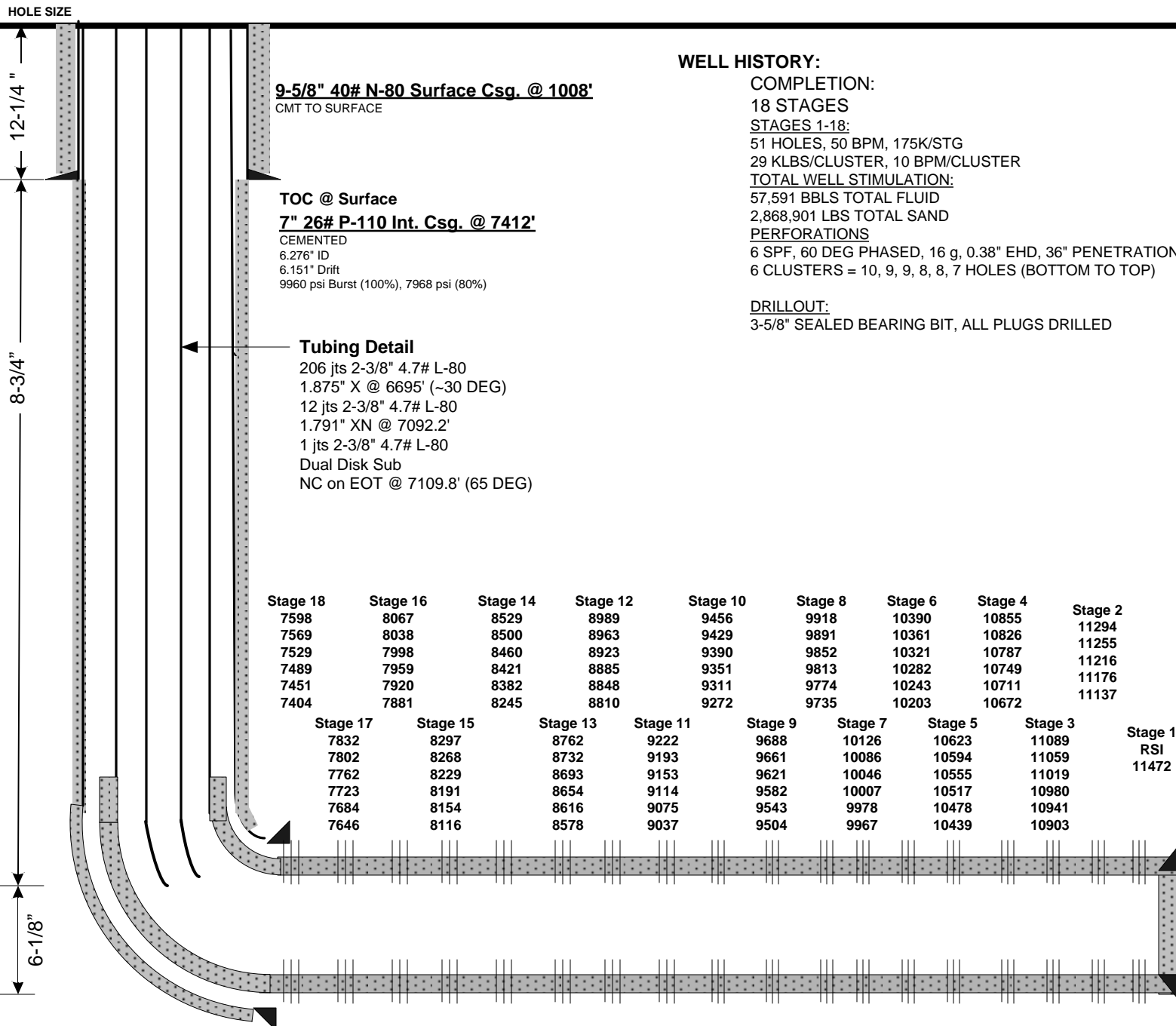
Current Wellbore Schematic

EnCana Oil & Gas (USA) Inc.



WELL : Flanigan 1A-6H – Cemented Perf/Plug
LOCATION : Lat: 40.08697 Long: 104.59176
COUNTY : WELD **STATE**: CO
FIELD : Wattenburg - NIOBRARA
ELEVATION : 4997' (GL) 5010' (KB) Δ 13'

SPUD DATE: 7/18/12
COMPL. DATE: 10/09/12
API #: 05123356900000



WELL HISTORY:

COMPLETION:

18 STAGES

STAGES 1-18:

51 HOLES, 50 BPM, 175K/STG

29 KLBS/CLUSTER, 10 BPM/CLUSTER

TOTAL WELL STIMULATION:

57,591 BBLs TOTAL FLUID

2,868,901 LBS TOTAL SAND

PERFORATIONS

6 SPF, 60 DEG PHASED, 16 g, 0.38" EHD, 36" PENETRATION

6 CLUSTERS = 10, 9, 9, 8, 8, 7 HOLES (BOTTOM TO TOP)

DRILLOUT:

3-5/8" SEALED BEARING BIT, ALL PLUGS DRILLED

Directional Data

KOP: 6350'

30°: 6750'

60°: 7150'

80°: 7350'

90°: 7500'

Max DLS: 12.5°/100' @ 7115' MD & 7241' MD

Lateral Length: 4419' (Int. Shoe-TD)

4-1/2" 13.5# P-110 DQX Prod. Csg @ 11,516'

CEMENTED

3.920" ID

3.795" Drift

12,410 psi Burst (100%), 9928 psi (80%)

TD: 11,531'

PBTD (FC): 11,511'

TVD: ~7000'

BHT: 240 F