



Weatherford®

Tooke Rockies, Inc.
(A Weatherford Company)

884 Implement Dr.
Dickinson, ND 58601
701-227-4408

717 West Platte
PO BOX 435
Casper, WY 82601
307-265-2124

Surface Logging Systems

Scale 1:240 (5"=100') Imperial
Measured Depth Log

Well Name: Tebo 29-1H(Build Section)
Location: SE/SE Sec. 29 T4S, R64W, Arapahoe County, CO.
License Number: API- 05-005-07165 Region: DJ Basin
Spud Date: 7/7/2012 Drilling Completed: 7//2012
Surface Coordinates: 265' FSL, 765' FEL, SE/SE Sec. 29, T4S. R64W, Arapahoe County, Colorado.
Bottom Hole PROPOSED- 660' FSL, 520' FWL, SW/SW Sec. 29 T4S, R64W,
Coordinates: Arapahoe County, CO.
Ground Elevation (ft): 5856' K.B. Elevation (ft): 5880'
Logged Interval (ft): 7140' To: ' Total Depth (ft): '
Formation: Niobrara/Dakota
Type of Drilling Fluid: INVERT/WATER BASE

Printed by MUD.LOG from WellSight Systems 1-800-447-1534 www.WellSight.com

OPERATOR

Company: Conoco/Phillips
Address: 600 N. Dairy Ashford
WL 3 3056
Houston, TX 77079

GEOLOGIST

Name: Todd Thiesse, Gabe Genitempo
Company: Tooke Rockies/ Weatherford SLS
Address: PO Box 435
Casper, WY. 82602
307.265.2124

Supervision

Project Geologist: John Ostergren- Conoco/Phillips
Drilling Engineer: Gary Hamilton- Conoco/Phillips
Drilling Sup: Bob Strickler- Conoco/Phillips
Company Rep: Richard Perez, Frank Holubec(Day Leads)
Company Rep: Wes Evans, Drew Friedicks(Night Leads)
Well Site Safety: Rainey Schexnider, Nick Atkinson

Comments

Drilling Co.--H & P, Rig #280
Toolpusher- , Mike Stevens
Dir. Co.- Sperry
Mud Co.- Baroid/Haliburton, Jason Kennedy, Dave Howell

ROCK TYPES

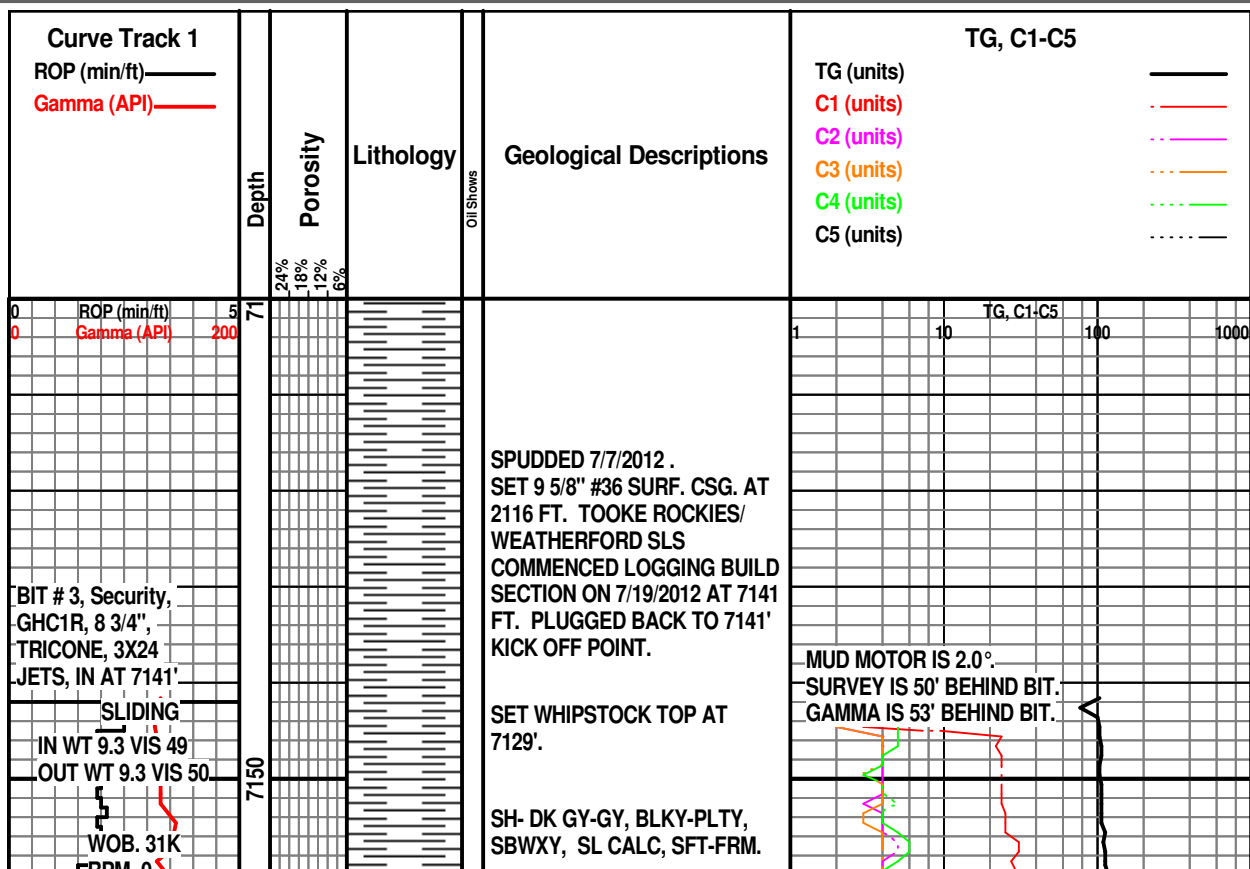
	Anhy		Clyst		Gyp		Mrlst		Shgy
	Bent		Coal		Igne		Salt		Sltst
	Brec		Congl		Lmst		Shale		Ss
	Cht		Dol		Meta		Shcol		Till

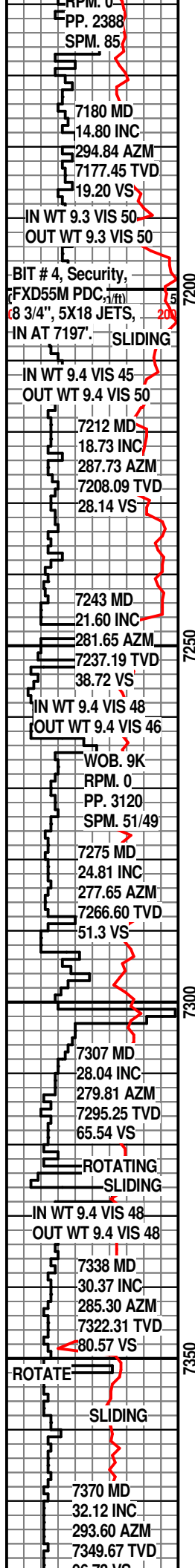
ACCESSORIES

MINERAL				FOSSIL				Ostra		<div><div></div></div> Sltstrg	
<div><div></div></div>	Anhy	<div><div></div></div>	Gyp	<div><div></div></div>	Algae	<div><div></div></div>	Pelec	<div><div></div></div>	Pelec	<div><div></div></div>	Ssstrg
<div><div></div></div>	Arggrn	<div><div>K</div></div>	Kaol	<div><div></div></div>	Amph	<div><div></div></div>	Pellet	<div><div></div></div>	Pellet		
<div><div></div></div>	Arg	<div><div>TT</div></div>	Marl	<div><div></div></div>	Belm	<div><div></div></div>	Pisolite	<div><div></div></div>	Pisolite		
<div><div>B</div></div>	Bent	<div><div>*</div></div>	Minxl	<div><div></div></div>	Bioclst	<div><div></div></div>	Plant	<div><div></div></div>	Plant		
<div><div></div></div>	Bit	<div><div></div></div>	Nodule	<div><div></div></div>	Brach	<div><div></div></div>	Strom	<div><div></div></div>	Strom		
<div><div></div></div>	Brecfrag	<div><div></div></div>	Phos	<div><div></div></div>	Bryozoa						
<div><div></div></div>	Calc	<div><div>P</div></div>	Pyr	<div><div></div></div>	Cephal						
<div><div></div></div>	Carb	<div><div></div></div>	Salt	<div><div></div></div>	Coral						
<div><div></div></div>	Chtdk	<div><div></div></div>	Sandy	<div><div></div></div>	Crin						
<div><div></div></div>	Chtlt	<div><div></div></div>	Silt	<div><div></div></div>	Echin						
<div><div></div></div>	Dol	<div><div></div></div>	Sil	<div><div></div></div>	Fish						
<div><div></div></div>	Feldspar	<div><div></div></div>	Sulphur	<div><div></div></div>	Foram						
<div><div></div></div>	Ferrpel	<div><div></div></div>	Tuff	<div><div>F</div></div>	Fossil						
<div><div></div></div>	Ferr			<div><div></div></div>	Gastro						
<div><div></div></div>	Glau			<div><div></div></div>	Oolite						

OTHER SYMBOLS

POROSITY TYPE		Vuggy	ROUNDING		Spotted	EVENTS	
Earthy			Rounded		Ques	Rft	
Fenest			Subrnd		Dead		
Fracture			Subang				
Inter			Angular		INTERVALS		
Moldic					Core		
Organic					Dst		
Pinpoint			OIL SHOWS				
			Even				





SH- DK GY-GY, BLKY-PLTY,
SBWXY, SL CALC, SFT-FRM.

**TRIP OUT AT 7197'
FOR PDC BIT.**

07/20/12

Re-started drilling 03:13 AM
07/20/12

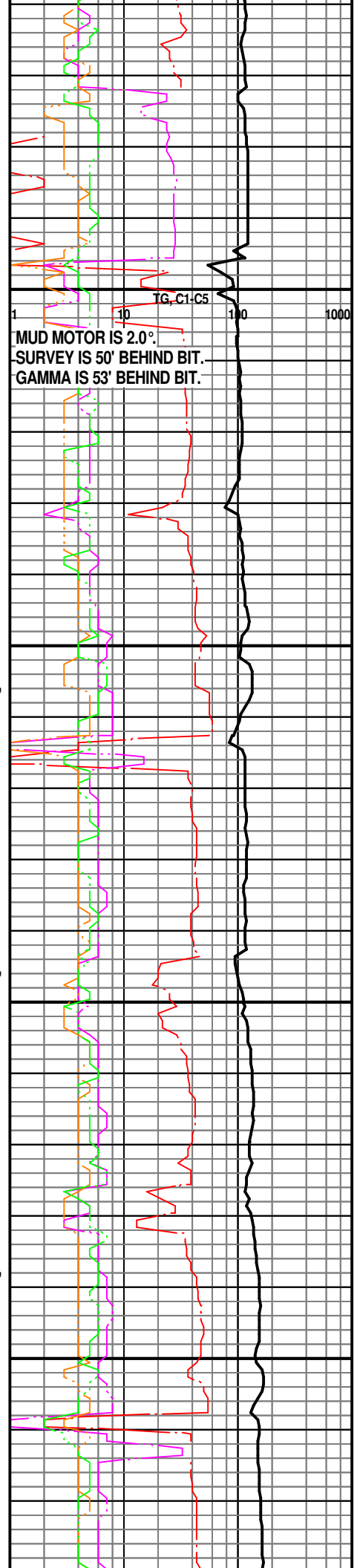
SH- DK GY-GY, DK BRN,
BLKY-PLTY, SBWXY-CHKY,
SFT-FRM.

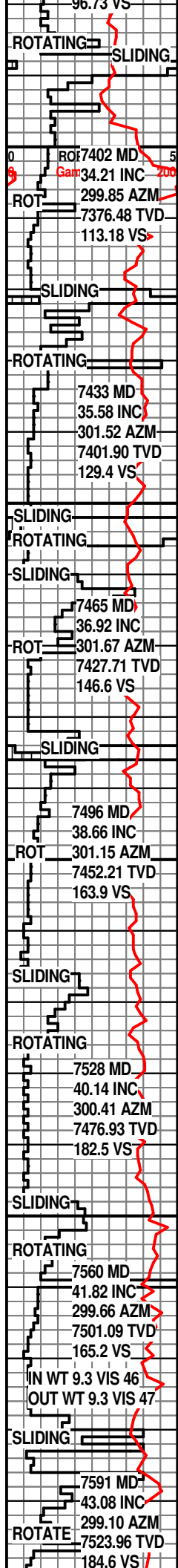
SH- DK GY-GY, DK BRN,
BLKY-PLTY, SBWXY, SL CALC,
SFT-FRM.

SH- DK GY-GY, DK BRN,
BLKY-PLTY, SBWXY, SL CALC,
SFT-FRM.

SH- DK GY-GY, DK BRN,
BLKY-PLTY, SBWXY, SL CALC,
SFT-FRM.

SH- DK GY-GY, DK BRN,





7400

7450

7500

7550

7600

SH- DK GY-GY, DK BRN,
BLKY-PLTY, SBWXY, SL CALC,
SFT-FRM.

SH- DK GY-GY, DK BRN,
BLKY-PLTY, SBWXY, SL CALC,
CARB LAM, SFT- FRM.

IN WT 9.3 VIS 47
OUT WT 9.3 VIS 47

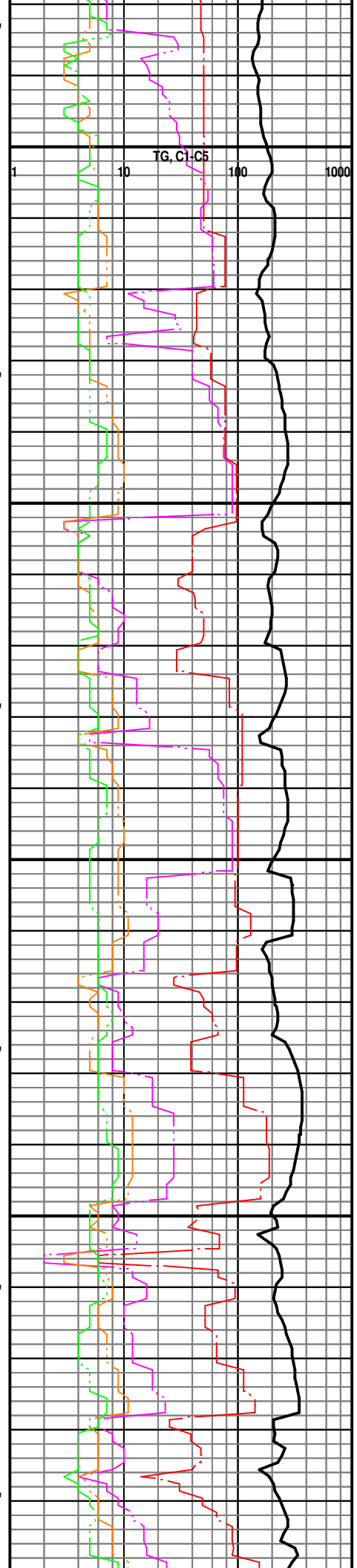
SH- DK GY-GY, DK BRN,
BLKY-PLTY, SBWXY, SL CALC,
CARB LAM, SFT- FRM.

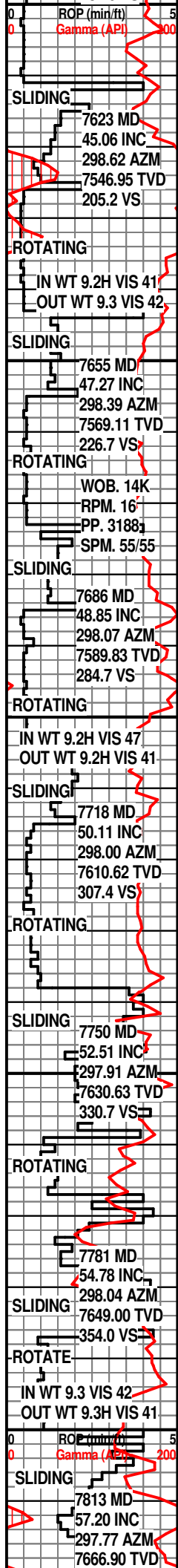
IN WT 9.3 VIS 48
OUT WT 9.3 VIS 47

SH- DK GY-GY, DK BRN,
BLKY-PLTY, SBWXY, SL CALC,
CARB LAM, SFT- FRM.

SH- DK GY-GY, DK BRN,
BLKY-PLTY, SBWXY, SL CALC,
CARB LAM, SFT- FRM.

SH- DK GY-GY, DK BRN,
BLKY-PLTY, SBWXY, SL CALC,
CARB LAM, SFT- FRM.





7600
7650
7700
7750
7800

SH- DK GY-GY, DK BRN,
BLKY-PLTY, SBWXY, SL CALC,
CARB LAM, SFT- FRM.

SH- DK GY-GY, DK BRN,
BLKY-PLTY, SBWXY, CARB
LAM, SFT- FRM.

SH- DK GY-GY, DK BRN,
BLKY-PLTY, SBWXY, CARB
LAM, SFT- FRM.

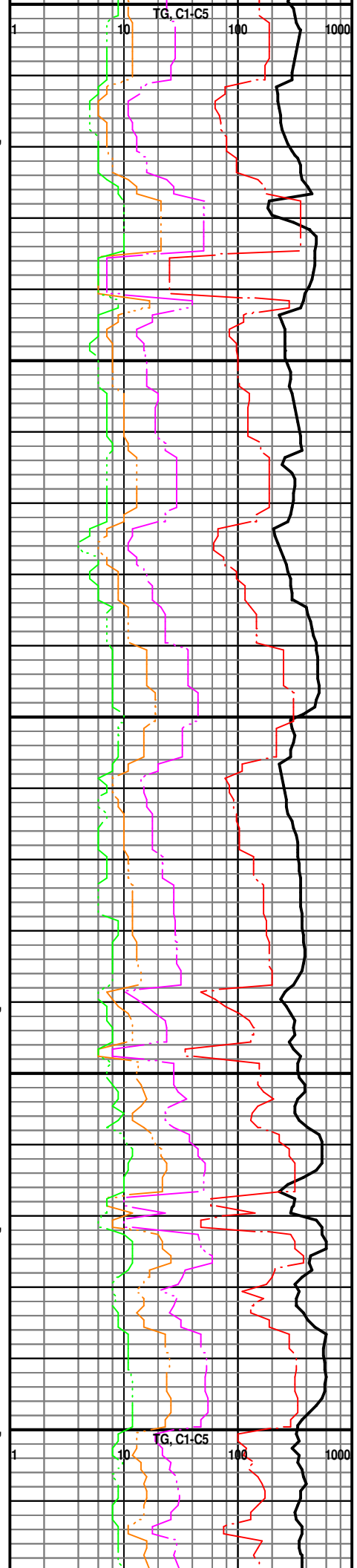
SH- DK GY-GY, DK BRN,
BLKY-PLTY, SBWXY, CARB
LAM, SFT- FRM.

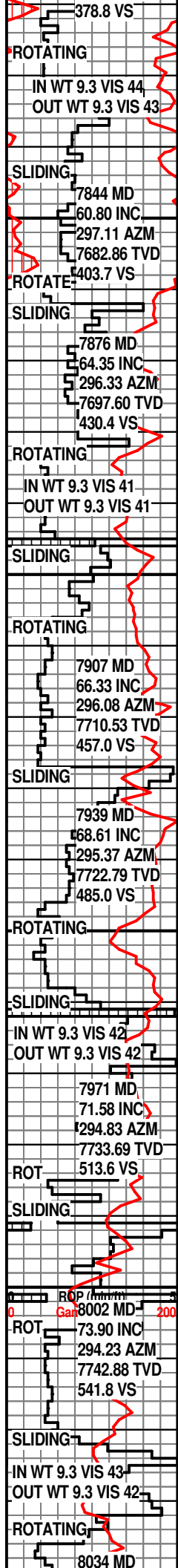
SH- DK GY-GY, DK BRN,
BLKY-PLTY, SBWXY, SL CALC,
CARB LAM, SFT- FRM.

SH- DK GY-GY, DK BRN,
BLKY-PLTY, SBWXY, SL CALC,
CARB LAM, SFT- FRM.

07/21/12

SH- DK GY-GY, DK BRN,
BLKY-PLTY, SBWXY, SL CALC,
CARB LAM, SFT- FRM.





7850

7900

7950

8000

SH- DK GY-GY, DK BRN,
BLKY-PLTY, SBWXY, V CALC,
CARB LAM, SFT- FRM.

SH- DK GY-GY, DK BRN,
BLKY-PLTY, SBWXY, V CALC,
CARB LAM, SFT- FRM.

SH- DK GY-GY, DK BRN,
BLKY-PLTY, SBWXY, V CALC,
CARB LAM, SFT- FRM.

SH- DK GY-GY, DK BRN,
BLKY-PLTY, SBWXY, V CALC,
CARB LAM, SFT- FRM.

SH- DK GY-GY, DK BRN,
BLKY-PLTY, SBWXY, V CALC,
CARB LAM, SFT- FRM.

SH- DK GY-GY, DK BRN,
BLKY-PLTY, SBWXY, V CALC,
CARB LAM, SFT- FRM, TR
BENT

IN WT 9.3 VIS 43
OUT WT 9.3 VIS 42

SH- DK GY-GY, DK BRN,
BLKY-PLTY, SBWXY, V CALC,
CARB LAM, SFT- FRM, TR
BENT

