

The Road to Excellence Starts with Safety

Sold To #: 300721	Ship To #: 2950817	Quote #:	Sales Order #: 9809229
Customer: WPX ENERGY ROCKY MOUNTAIN LLC-EBUS	Customer Rep: Wilson, W.C.		
Well Name: RWF	Well #: 344-27	API/UWI #: 05-045-19850	
Field: RULISON	City (SAP): RIFLE	County/Parish: Garfield	State: Colorado
Lat: N 39.49 deg. OR N 39 deg. 29 min. 25.037 secs.	Long: W 107.872 deg. OR W -108 deg. 7 min. 39.443 secs.		
Contractor: NABORS 577	Rig/Platform Name/Num: NABORS 577		
Job Purpose: Cement Surface Casing			
Well Type: Development Well	Job Type: Cement Surface Casing		
Sales Person: MAYO, MARK	Srv Supervisor: DEUSSEN, EDWARD	MBU ID Emp #: 485182	

Job Personnel

HES Emp Name	Exp Hrs	Emp #	HES Emp Name	Exp Hrs	Emp #	HES Emp Name	Exp Hrs	Emp #
DEUSSEN, EDWARD Eric	13	485182	DOUT, JACOB J	13	430298	ENGBERG, KEVIN W	13	454218
SIMINEO, JEROD M	3	479954						

Equipment

HES Unit #	Distance-1 way	HES Unit #	Distance-1 way	HES Unit #	Distance-1 way	HES Unit #	Distance-1 way
10025118	60 mile	10616651C	60 mile	10722398	60 mile	11139330	60 mile
11259886	60 mile	11360881	60 mile	11808827	60 mile		

Job Hours

Date	On Location Hours	Operating Hours	Date	On Location Hours	Operating Hours	Date	On Location Hours	Operating Hours
9/21/12	5	0	9/22/12	8	2.5			

TOTAL Total is the sum of each column separately

Job

Formation Name	Formation Depth (MD)	Top	Bottom	Form Type	Job depth MD	Job Depth TVD	Water Depth	Perforation Depth (MD)	From	To
				BHST	1645. ft	1645. ft				
							Wk Ht Above Floor			5. ft

Well Data

Description	New / Used	Max pressure psig	Size in	ID in	Weight lbm/ft	Thread	Grade	Top MD ft	Bottom MD ft	Top TVD ft	Bottom TVD ft
OPEN HOLE				13.5				.	1654.		
SURFACE CASING	Unknown		9.625	9.001	32.3		H-40	.	1644.7		

Sales/Rental/3rd Party (HES)

Description	Qty	Qty uom	Depth	Supplier
PLUG,CMTG,TOP,9 5/8,HWE,8.16 MIN/9.06 MA	1	EA		

Tools and Accessories

Type	Size	Qty	Make	Depth	Type	Size	Qty	Make	Depth	Type	Size	Qty	Make
Guide Shoe					Packer					Top Plug	9 5/8	1	HES
Float Shoe					Bridge Plug					Bottom Plug			
Float Collar					Retainer					SSR plug set			
Insert Float										Plug Container	9 5/8	1	HES
Stage Tool										Centralizers			

Miscellaneous Materials

Gelling Agt	Conc	Surfactant	Conc	Acid Type	Qty	Conc	%
Treatment Fld	Conc	Inhibitor	Conc	Sand Type	Size	Qty	

Fluid Data

Stage/Plug #: 1

HALLIBURTON***Cementing Job Summary***

Fluid #	Stage Type	Fluid Name	Qty	Qty uom	Mixing Density lbm/gal	Yield ft ³ /sk	Mix Fluid Gal/sk	Rate bbl/min	Total Mix Fluid Gal/sk
1	Water Spacer	FRESH WATER	20.00	bbl	8.33	.0	.0	6.0	
2	Lead Cement	VERSACEM (TM) SYSTEM (452010)	250.0	sacks	12.3	2.38	13.75	7.5	13.75
3	Tail Cement	VERSACEM (TM) SYSTEM (452010)	160.0	sacks	12.8	2.11	11.75	7.5	11.75
4	Displacement	FRESH WATER	126.00	bbl	8.33	.0	.0	9.5	
Calculated Values		Pressures		Volumes					
Displacement	126	Shut In: Instant		Lost Returns		Cement Slurry	166.1	Pad	
Top Of Cement	SURFACE	5 Min		Cement Returns	18	Actual Displacement	126	Treatment	
Frac Gradient		15 Min		Spacers	20	Load and Breakdown		Total Job	312.2
Rates									
Circulating	16	Mixing	7.5	Displacement	9.5	Avg. Job	8.5		
Cement Left In Pipe	Amount	0 ft	Reason	Shoe Joint					
Frac Ring # 1 @		ID	Frac ring # 2 @	ID	Frac Ring # 3 @	ID	Frac Ring # 4 @	ID	
The Information Stated Herein Is Correct				Customer Representative Signature					

The Road to Excellence Starts with Safety

Sold To #: 300721	Ship To #: 2950817	Quote #:	Sales Order #: 9809229
Customer: WPX ENERGY ROCKY MOUNTAIN LLC-EBUS	Customer Rep: Wilson, W.C.		
Well Name: RWF	Well #: 344-27	API/UWI #: 05-045-19850	
Field: RULISON	City (SAP): RIFLE	County/Parish: Garfield	State: Colorado
Legal Description:			
Lat: N 39.49 deg. OR N 39 deg. 29 min. 25.037 secs.		Long: W 107.872 deg. OR W -108 deg. 7 min. 39.443 secs.	
Contractor: NABORS 577	Rig/Platform Name/Num: NABORS 577		
Job Purpose: Cement Surface Casing		Ticket Amount:	
Well Type: Development Well	Job Type: Cement Surface Casing		
Sales Person: MAYO, MARK	Srv Supervisor: DEUSSEN, EDWARD	MBU ID Emp #: 485182	

Activity Description	Date/Time	Cht #	Rate bbl/ min	Volume bbl		Pressure psig		Comments
				Stage	Total	Tubing	Casing	
Call Out	09/21/2012 15:00							
Pre-Convoy Safety Meeting	09/21/2012 17:15							ALL HES PERSONNEL
Crew Leave Yard	09/21/2012 17:30							1 ELITE, 2 660s, 1 PICKUP
Arrive At Loc	09/21/2012 19:00							RIG STILL PULLING DRILL PIPE - PLACED TAIL CEMENT INTO SILO, 1 660 RETURNED TO YARD
Assessment Of Location Safety Meeting	09/21/2012 19:15							
Pre-Rig Up Safety Meeting	09/22/2012 02:15							ALL HES PERSONNEL
Rig-Up Equipment	09/22/2012 02:30							1 HARD LINE TO FLOOR, 2 WATER LINES TO UPRIGHT AND DAY TANK, BULK HOSES TO 660 AND SILO
Pre-Job Safety Meeting	09/22/2012 04:30							ALL HES PERSONNEL AND RIG CREW
Start Job	09/22/2012 04:57							TD 1654', TP 1644.7', SJ 43.60', MW 10.4, OH 13 1/2", CSG 9 5/8", 32.3#, PV 67, YP 43
Pump Water	09/22/2012 04:58		2	2			67.0	FILL LINES
Pressure Test	09/22/2012 05:00							PRESSURED UP TO 3202 PSI - PRESSURE HELD WELL
Pump Spacer 1	09/22/2012 05:04		6	20			232.0	FRESH WATER SPACER
Activity Description	Date/Time	Cht	Rate bbl/ min	Volume bbl		Pressure psig		Comments

Sold To #: 300721

Ship To #: 2950817

Quote #:

Sales Order #:

9809229

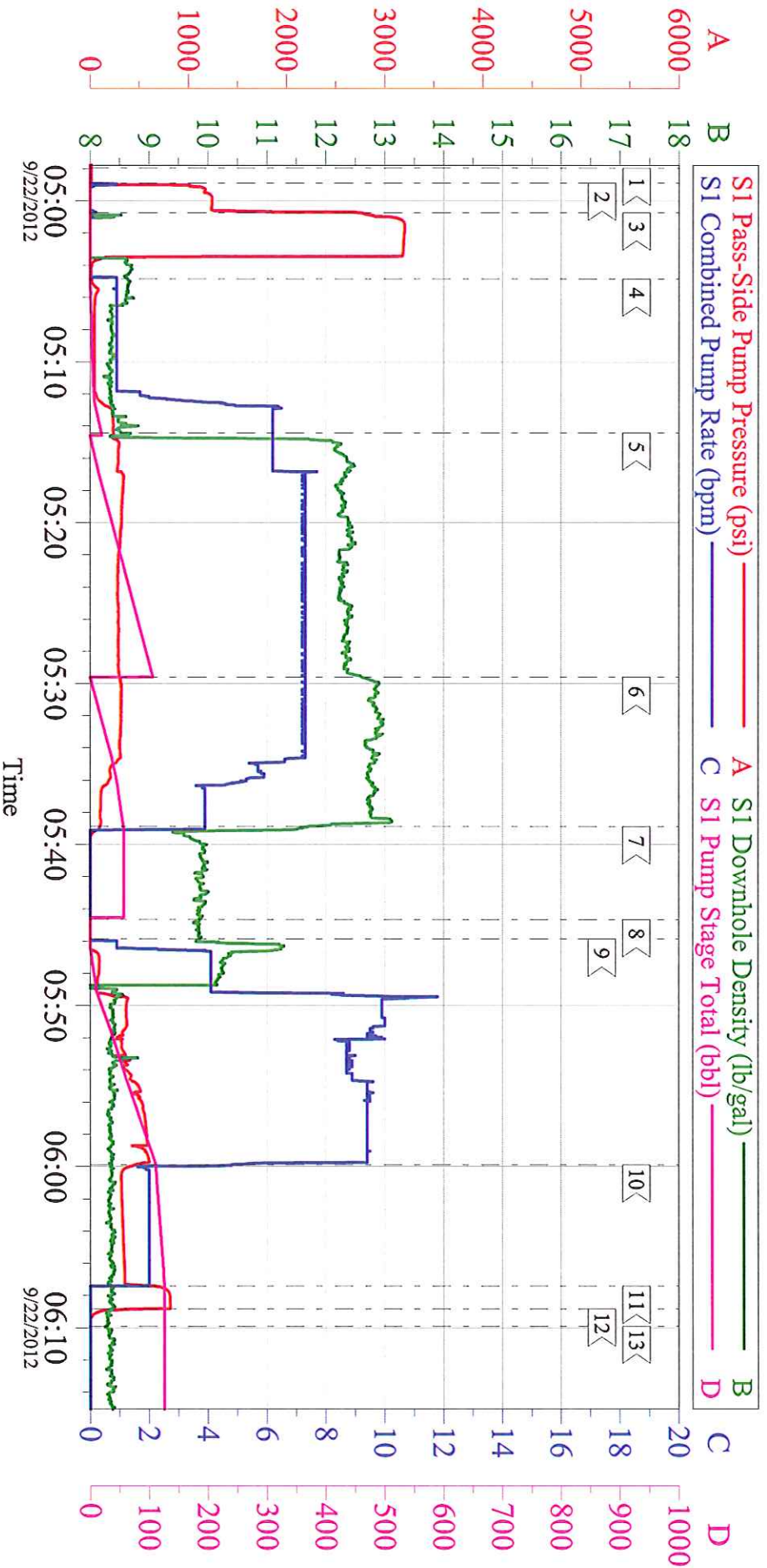
SUMMIT Version: 7.3.0040

Sunday, September 30, 2012 05:41:00

Cementing Job Log

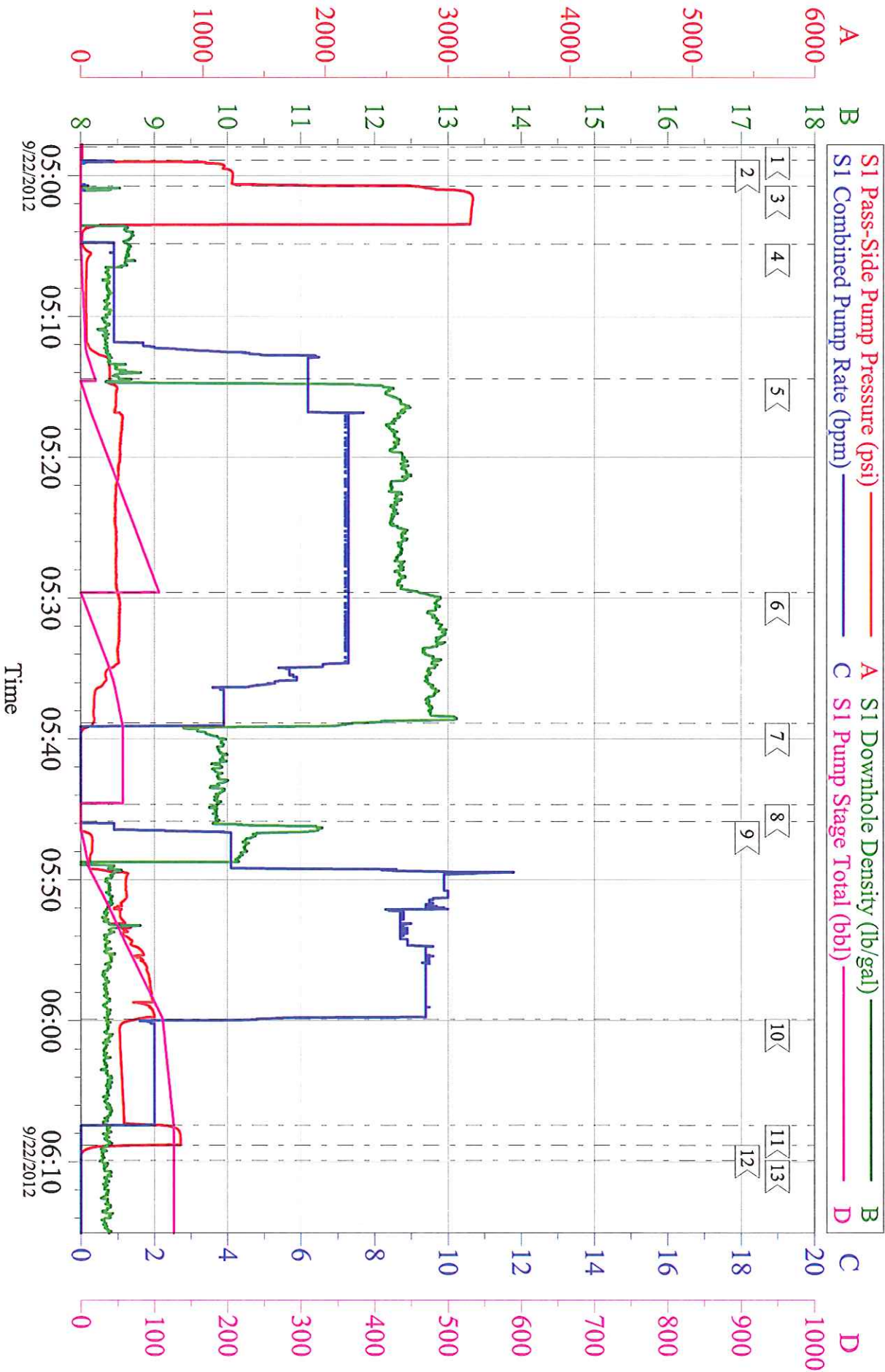
		#		Stage	Total	Tubing	Casing	
Pump Lead Cement	09/22/2012 05:14		7.5	106			338.0	250 SKS, 12.3 PPG, 2.38 YIELD, 13.75 GAL/SK
Pump Tail Cement	09/22/2012 05:29		7.5	60.1			315.0	160 SKS, 12.8 PPG, 2.11 YIELD, 11.75 GAL/SK
Shutdown	09/22/2012 05:38							
Drop Top Plug	09/22/2012 05:44							WASH UP ON TOP OF PLUG
Pump Displacement	09/22/2012 05:45		9.5	126			607.0	FRESH WATER
Slow Rate	09/22/2012 05:59		2	10			327.0	
Bump Plug	09/22/2012 06:07						351.0	PRESSURED UP TO 811 PSI
Check Floats	09/22/2012 06:08							FLOATS HELD - GOT 1 BBL BACK
End Job	09/22/2012 06:09							GOT 18 BBLS CEMENT TO SURFACE / USED 80 LBS SUGAR - ADDED 3 HOURS - NO DERRICK CHARGE
Post-Job Safety Meeting (Pre Rig-Down)	09/22/2012 06:15							ALL HES PERSONNEL
Rig-Down Equipment	09/22/2012 06:30							
Pre-Convoy Safety Meeting	09/22/2012 07:45							ALL HES PERSONNEL
Crew Leave Location	09/22/2012 08:00							THANK YOU FOR USING HALLIBURTON AND ED DEUSSEN AND CREW

WPX - RWF 344-27 9 5/8 SURFACE



Customer: WPX	Job Date: 22-Sep-2012	Sales Order #: 9809229
Well Description: RWF 344-27	Job Type: SURFACE	ADC Used: YES
Company Rep: W.C. WILSON	Cement Supervisor: ED DEUSSEN	Elite #: ED DEUSSEN

WPX - RWF 344-27 9 5/8 SURFACE



Customer: WPX	Job Date: 22-Sep-2012	Sales Order #: 9809229
Well Description: RWF 344-27	Job Type: SURFACE	ADC Used: YES
Company Rep: W.C. WILSON	Cement Supervisor: ED DEUSSEN	Elite #: ED DEUSSEN