

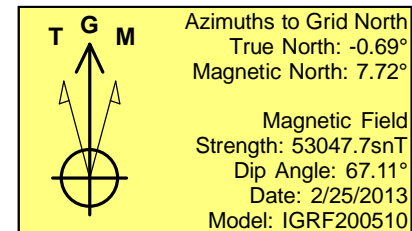
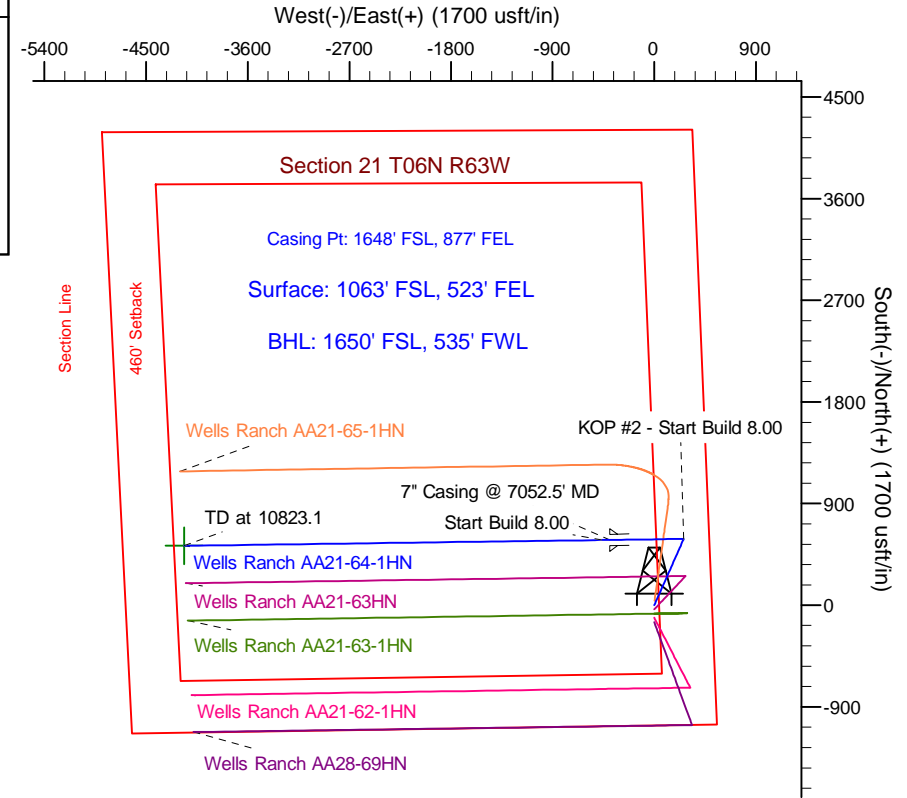
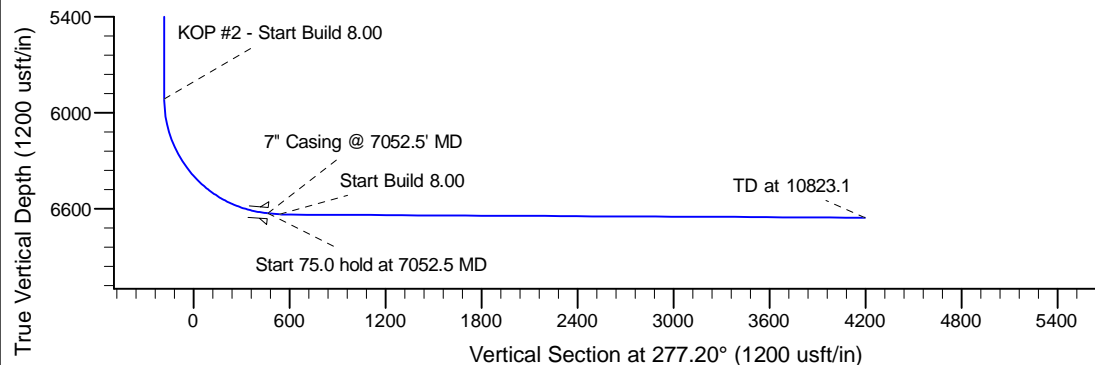
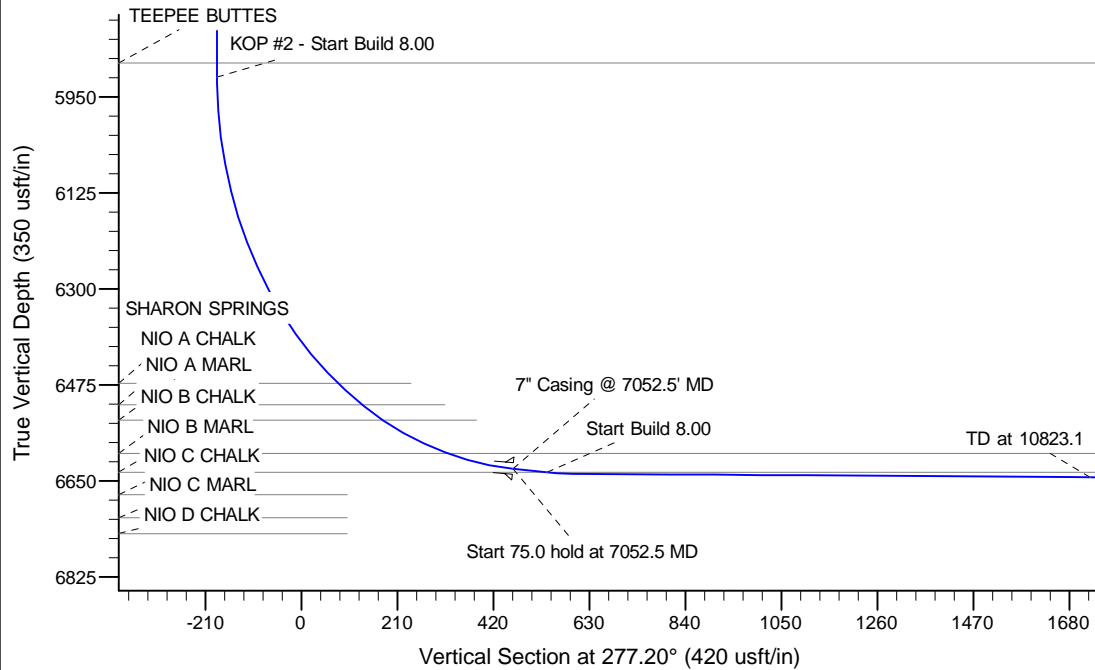
Project: Wattenberg Field
 Site: AA (Sec.21-T06N-R63W) Weld County, CO
 Well: Wells Ranch AA21-64-1HN
 Wellbore: Original Drilling
 Design: APD - Rev 0

Northern Region Drilling

Geodetic System: US State Plane 1983
 Datum: North American Datum 1983
 Ellipsoid: GRS 1980
 Zone: Colorado Northern Zone
 System Datum: Mean Sea Level

SECTION DETAILS

Sec	MD	Inc	Azi	TVD	+N/-S	+E/-W	Dleg	TFace	VSec	Target
1	0.0	0.00	0.00	0.0	0.0	0.0	0.00	0.00	0.0	
2	1500.0	0.00	0.00	1500.0	0.0	0.0	0.00	0.00	0.0	
3	2250.1	15.00	23.89	2241.6	89.3	39.5	2.00	23.89	-28.0	
4	3975.8	15.00	23.89	3908.4	497.7	220.5	0.00	0.00	-156.3	
5	4725.9	0.00	0.00	4650.0	587.0	260.0	2.00	180.00	-184.4	
6	5990.0	0.00	0.00	5914.1	587.0	260.0	0.00	0.00	-184.4	
7	7052.5	85.00	269.21	6627.6	578.0	-393.7	8.00	269.21	463.1	
8	7127.5	85.00	269.21	6634.1	577.0	-468.4	0.00	0.00	537.0	
9	7186.3	89.70	269.21	6636.9	576.1	-527.1	8.00	0.00	595.1	
10	10823.1	89.70	269.21	6655.9	526.0	-4163.5	0.00	0.00	4196.6	Wells Ranch AA21-64-1HN BHL 1650'FSL, 535'FWL



WELL DETAILS: Wells Ranch AA21-64-1HN

Ground Level: 4730.0			
Northing	Easting	Latitude	Longitude
0.0	0.0	1415034.91	3296551.89
		40.467780	-104.434130

Plan: APD - Rev 0 (Wells Ranch AA21-64-1HN/Original Drilling)

Created By: Shailey Jewell Date: 12:12, March 11 2013

OK to submit with 2A as per Noble Drilling
 3/12/13 5:25