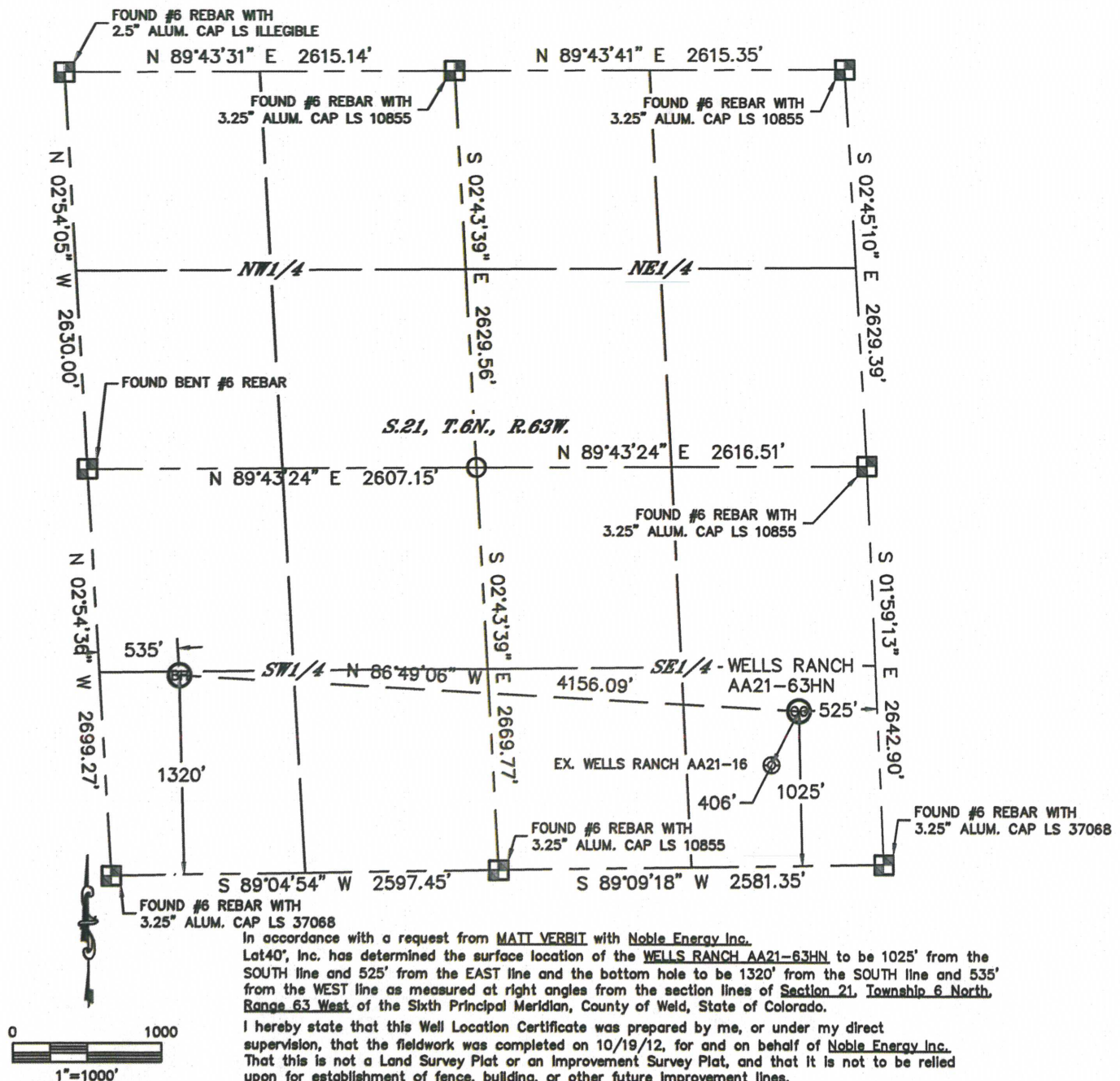


# WELL LOCATION CERTIFICATE

THIS MAP DOES NOT REPRESENT A BOUNDARY SURVEY

SECTION: 21  
TOWNSHIP: 6N  
RANGE: 63W



**NOTE:**

- 1) Bearings shown are Grid Bearings of the Colorado State Plane Coordinate System, North Zone, North American Datum 1983/2007. The lineal dimensions as contained herein are based upon the "U.S. Survey Foot."
- 2) Ground elevations are based on an observed GPS elevation (NAVD 1988 DATUM).
- 3) NEAREST EXISTING WELL: WELLS RANCH AA21-16, 406'
- 4) IMPROVEMENTS: See LOCATION DRAWING for all visible improvements within 400' of disturbed area.
- 5) SURFACE USE: RANGELAND
- 6) INSTRUMENT OPERATOR: ADAM KELLY

**NOTE**

According to Colorado law, you must commence any legal action based upon any defect in this W.L.C. within three years after you discover such defect. In no event, may any action based upon any defect in this survey be commenced more than ten years after the date of the certificate shown hereon. (13-80-105 C.R.S.)

**LEGEND**

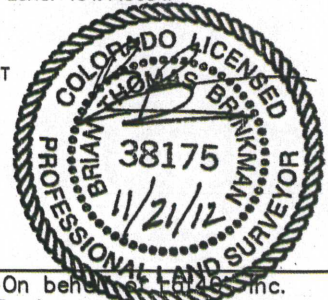
- = ALIQUOT MONUMENT AS DESCRIBED
- = CALCULATED POSITION

**SURFACE LOCATION**

LAT: 40.46768N  
LONG: 104.43413W  
PDOP: 1.5  
ELEV: 4730'  
1/4, 1/4: SE1/4SE1/4  
NEAREST PROPERTY LINE: 525' EAST

**BOTTOM HOLE**

LAT: 40.46845N  
LONG: 104.44903W



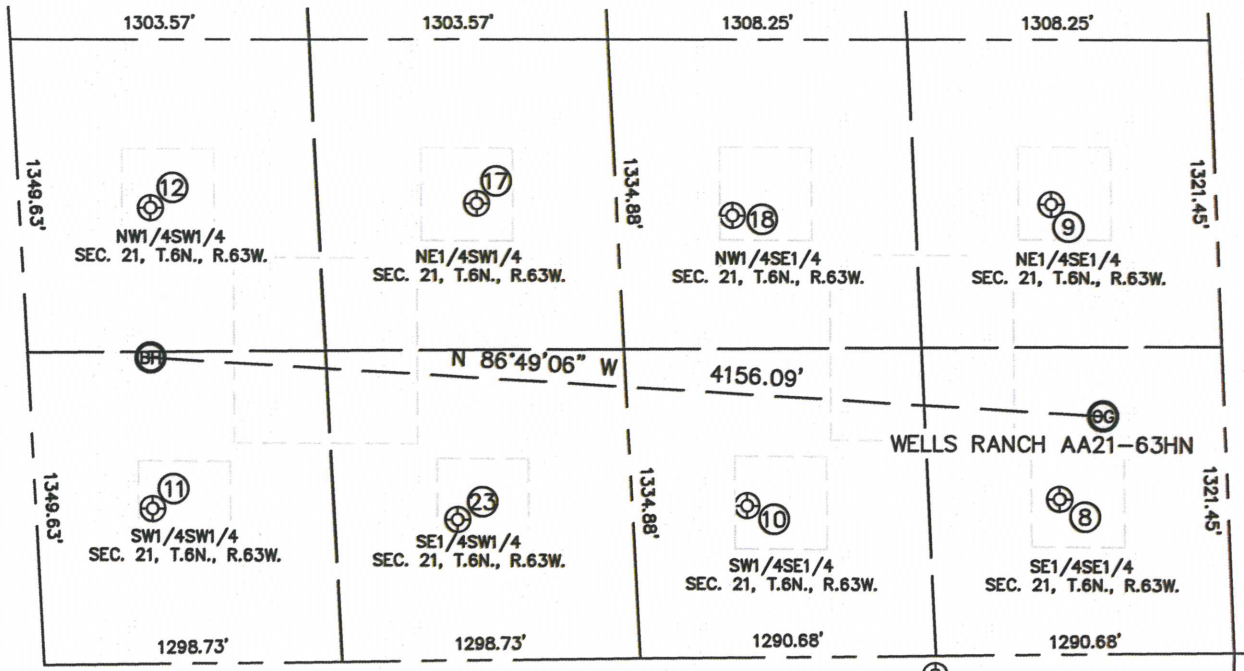
Brian T. Brinkman-On behalf of Lat40°, Inc.  
Colorado Licensed Professional  
Land Surveyor No. 38175

DATE: 11/02/2012  
PROJECT#: 2012141

# SITE SKETCH

## WELLS RANCH AA21-63HN

SECTION: 21  
TOWNSHIP: 6N  
RANGE: 63W



WELLS RANCH AA21-26  
SE1/4SE1/4  
669' FSL  
725' FEL  
LAT-40.46670N  
LONG-104.43482W  
PDOP:1.6  
ELEV: 4733'

WELLS RANCH AA21-9  
NE1/4SE1/4  
1939' FSL  
711' FEL  
LAT-40.47019°N  
LONG-104.43487°W  
PDOP:1.6  
ELEV:4724'

WELLS RANCH AA21-15  
SW1/4SE1/4  
654' FSL  
2090' FEL  
LAT-40.46665°N  
LONG-104.43972°W  
PDOP:1.8  
ELEV: 4732'

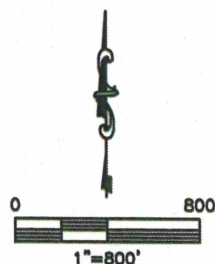
5 WELLS RANCH AA21-13  
SW1/4SW1/4  
669' FSL  
509' FWL  
LAT-40.466667N  
LONG-104.449037W  
PDOP:1.8  
ELEV:4701'

WELLS RANCH AA21-12  
NW1/4SW1/4  
1965' FSL  
571' FWL  
LAT-40.47022N  
LONG-104.44899W  
PDOP: 1.8  
ELEV: 4681'

WELLS RANCH AA21-11  
NE1/4SW1/4  
1967' FSL  
1992' FWL  
LAT-40.47024°N  
LONG-104.44388°W  
PDOP: 2.1  
ELEV: 4703'

WELLS RANCH AA21-10  
NW1/4SE1/4  
1905' FSL  
2104' FEL  
LAT-40.47008N  
LONG-104.43988W  
PDOP: 1.9  
ELEV: 4708'

WELLS RANCH AA21-14  
SE1/4SW1/4  
607' FSL  
1834' FWL  
LAT-40.46651°N  
LONG-104.44426°W  
PDOP: 1.3  
ELEV: 4718'



DATE: 11/16/2012  
PROJECT#: 2012141