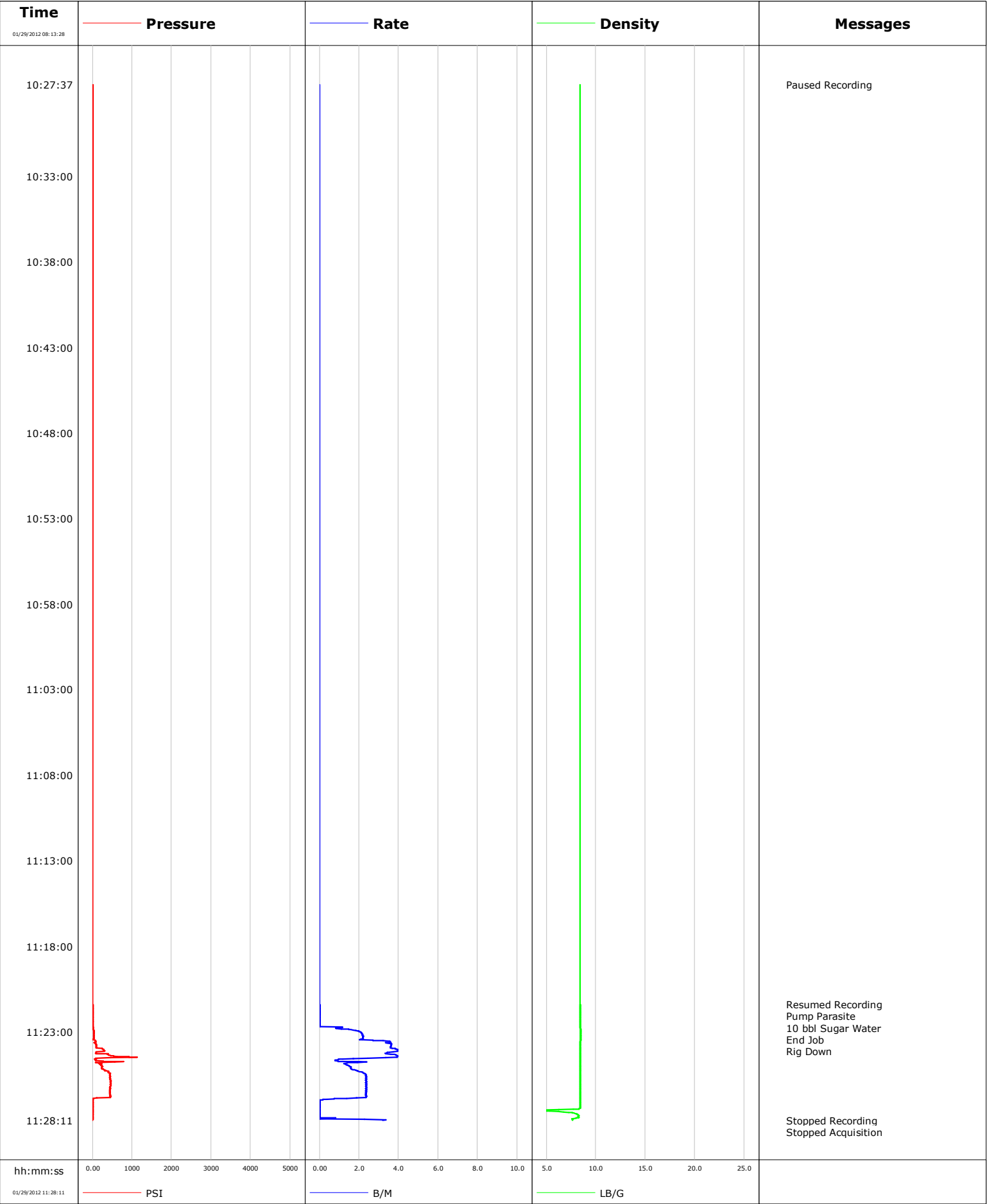


Well	DW 8608E-28 P	Client	Encana
Field	Grand Vall	SIR No.	
Engineer		Job Type	9 5/8 Surface
Country	United States	Job Date	01-29-2012

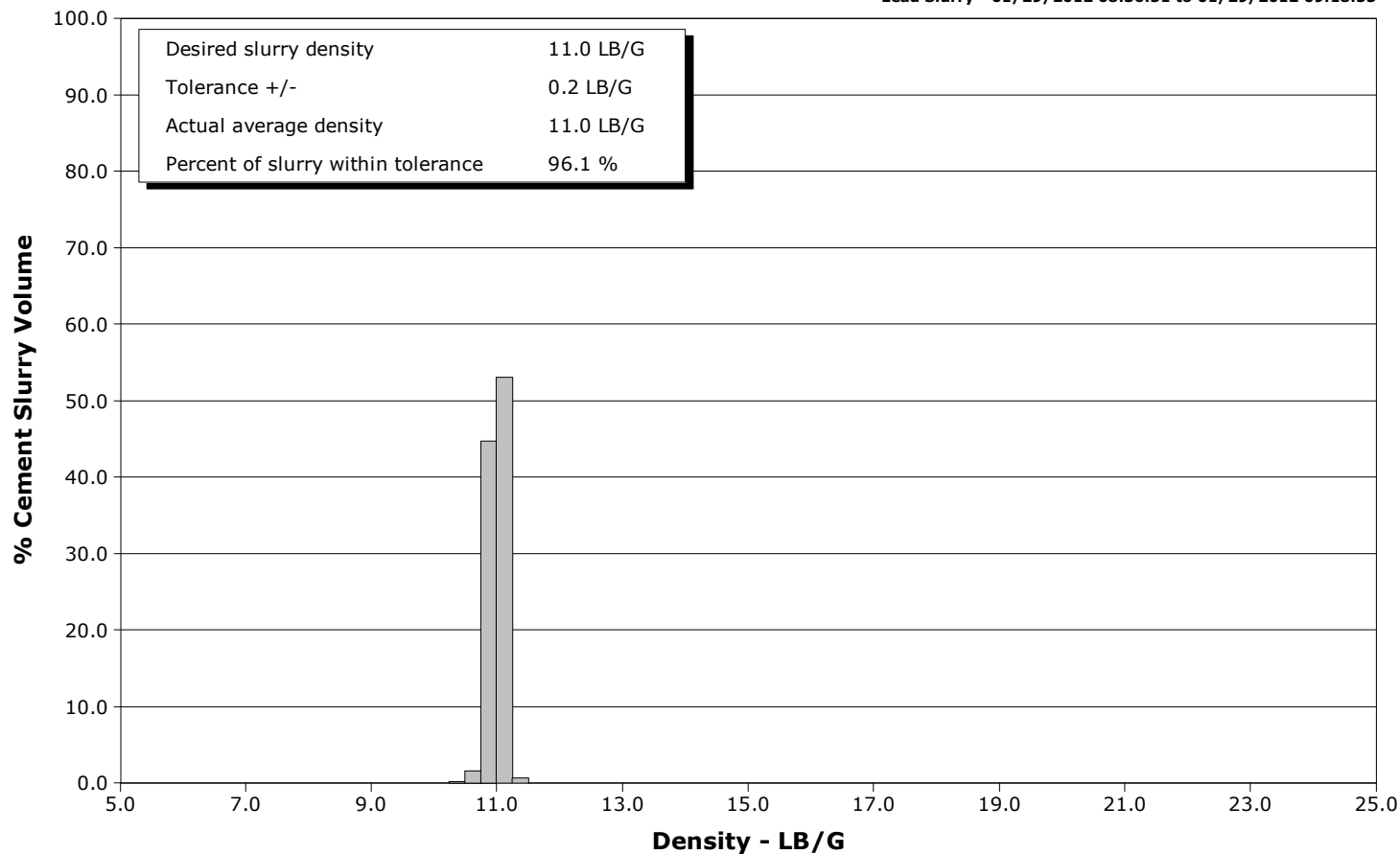


Schlumberger Cementing Qa/Qc Density Report

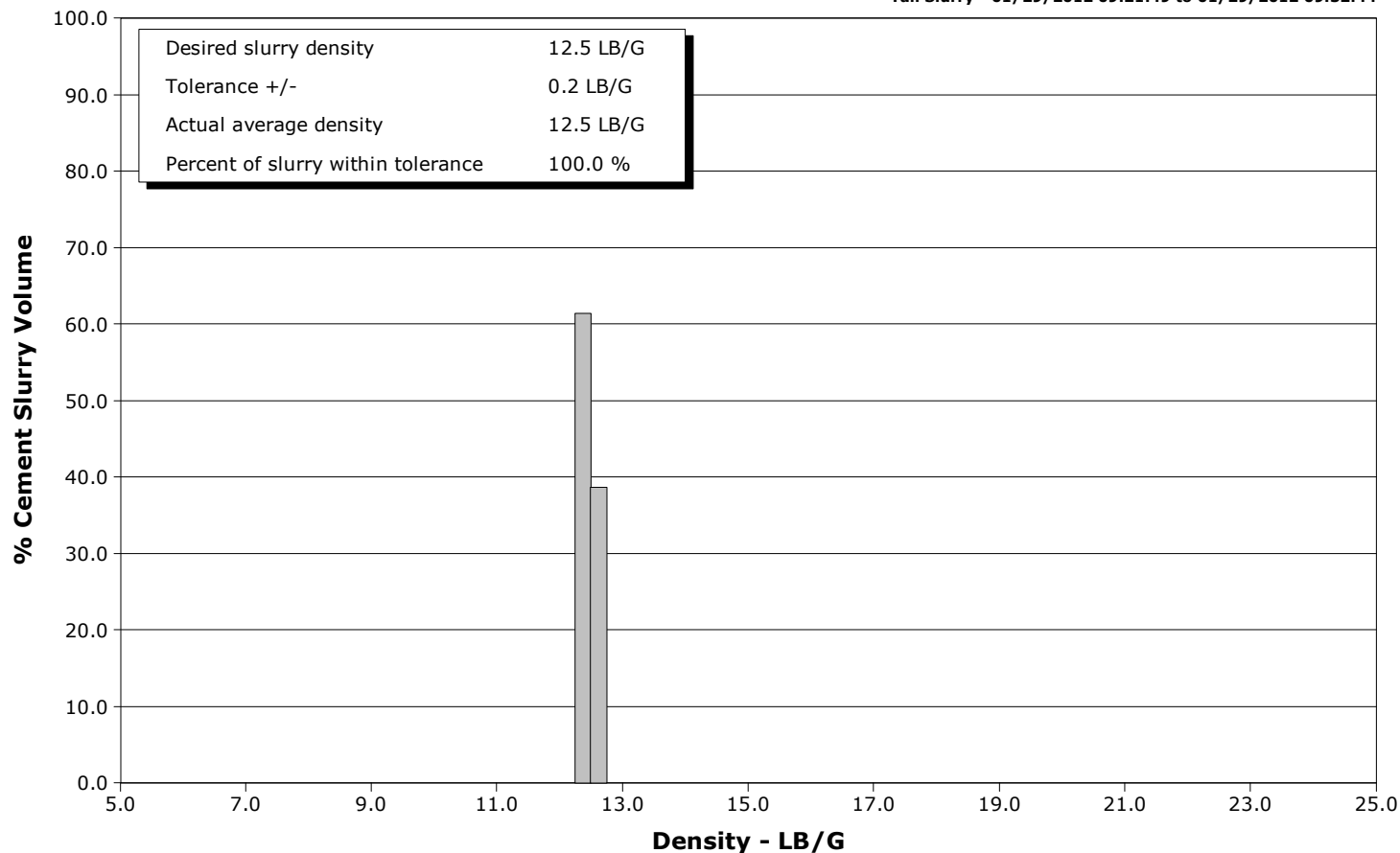
Well DW 8608E-28 P
Field Grand Vall
Engineer
Country United States

Client Encana
SIR No.
Job Type 9 5/8 Surface
Job Date 01-29-2012

Lead Slurry - 01/29/2012 08:36:51 to 01/29/2012 09:18:55



Tail Slurry - 01/29/2012 09:21:49 to 01/29/2012 09:32:44





Cementing Service Report

				Customer Encana		Job Number BQMF-00613		
Well DW 8608E-28 P DW 8608E-28 P			Location (legal)		Schlumberger Location GCO		Job Start Jan/29/2012	
Field Grand Vall		Formation Name/Type Shale		Deviation	Bit Size 14.8 in	Well MD		Well TVD
County Garfield		State/Province Colorado		BHP	BHST 110 degF	BHCT 91 degF		Pore Press. Gradient
Well Master 0631292213		API/UWI						
Rig Name Patterson 308	Drilled For Gas	Service Via Land	Casing/Liner					
			Depth, ft	Size, in	Weight, lb/ft	Grade		Thread
Offshore Zone	Well Class New	Well Type Development	2136.0	9.630	36.0	J55		8RD
			0.0	0.000	0.0			
Drilling Fluid Type Bentonite		Max. Density	Plastic Viscosity	Tubing/Drill Pipe				
				Depth,	Size,	Weight,	Grade	
Service Line Cementing	Job Type 9 5/8 Surface							
Max. Allowed Tub. Press	Max. Allowed Ann. Press	WH Connection Single Cement head	Perforations/Open Hole					
			Top,	Bottom,		No. of Shots		Total Interval
								Diameter
			Treat Down Casing	Displacement 161.0 bbl		Packer Type		Packer Depth
			Tubing Vol.	Casing Vol. 164.0 bbl		Annular Vol. 259.0 bbl		Openhole Vol. 424.0 bbl
Casing/Tubing Secured <input checked="" type="checkbox"/>		1 Hole Vol. Circulated prior to Cement <input checked="" type="checkbox"/>		Casing Tools		Squeeze Job		
Lift Pressure			Shoe Type Guide			Squeeze Type		
Pipe Rotated <input type="checkbox"/>		Pipe Reciprocated <input type="checkbox"/>		Shoe Depth 2136.0 ft		Tool Type		
No. Centralizers		Top Plugs 1	Bottom Plugs	Stage Tool Type		Tool Depth		
Cement Head Type Single			Stage Tool Depth		Tail Pipe Size			
Job Scheduled For Jan/29/2012		Arrived on Location Jan/29/2012	Leave Location Jan/29/2012	Collar Type Float		Tail Pipe Depth		
				Collar Depth 2089.0 ft		Sqz. Total Vol.		
Date	Time 24-hr clock	Treating Pressure PSI	Flow Rate B/M	Density LB/G	Volume BBL	Message		
01/29/2012	07:51:17					Started Acquisition		
01/29/2012	08:13:28	7	1.0	8.33	0.0			
01/29/2012	08:13:30					50 bbl Mudpush		
01/29/2012	08:13:30					471 sks of 11.0 LiteFIL		
01/29/2012	08:13:30	8	1.1	8.32	0.0			
01/29/2012	08:13:31					246 sks of 12.5 LiteFIL		
01/29/2012	08:13:31					Held Safety Meeting		
01/29/2012	08:13:31	8	1.1	8.33	0.1			
01/29/2012	08:14:23					Start Job		
01/29/2012	08:14:23	8	0.7	8.39	0.2			
01/29/2012	08:14:31					Pressure Test Lines		
01/29/2012	08:14:31	39	1.8	8.37	0.4			
01/29/2012	08:15:17	107	2.6	8.38	2.3			
01/29/2012	08:16:33					Pressure Test 5003000psi		
01/29/2012	08:16:33					Test = Good		
01/29/2012	08:16:33	543	0.0	8.39	2.6			
01/29/2012	08:17:17	513	0.0	8.39	2.6			
01/29/2012	08:19:17	34	0.0	8.39	2.6			
01/29/2012	08:21:17	34	0.0	8.39	2.6			
01/29/2012	08:21:52					Start Pumping Spacer		
01/29/2012	08:21:52	68	1.7	8.42	2.7			

Well DW 8608E-28 P DW 8608E-28 P			Field Grand Vall		Job Start Jan/29/2012	Customer Encana	Job Number BQMF-00613
Date	Time 24-hr clock	Treating Pressure PSI	Flow Rate B/M	Density LB/G	Volume BBL	Message	
01/29/2012	08:21:54	98	2.4	8.57	2.7		
01/29/2012	08:21:55					Good Returns	
01/29/2012	08:21:55	98	2.4	8.57	2.8		
01/29/2012	08:23:17	252	3.9	9.99	7.6		
01/29/2012	08:25:17	189	3.9	9.96	15.5		
01/29/2012	08:27:17	213	4.0	9.99	23.3		
01/29/2012	08:29:17	171	4.0	10.03	31.2		
01/29/2012	08:31:17	167	3.9	10.04	39.1		
01/29/2012	08:32:26					Reset Total, Vol = 43.72 bbl	
01/29/2012	08:32:26	173	4.0	9.99	43.7		
01/29/2012	08:33:17	184	4.0	10.28	47.1		
01/29/2012	08:35:17	371	5.7	10.83	56.0		
01/29/2012	08:36:46					End Spacer	
01/29/2012	08:36:46	572	7.5	10.96	66.6		
01/29/2012	08:36:51					Start Mixing Lead Slurry	
01/29/2012	08:36:51	544	7.6	10.96	67.2		
01/29/2012	08:37:17	525	7.6	10.97	70.5		
01/29/2012	08:38:21					241 bbl 11.0 LiteFIL	
01/29/2012	08:38:21					Wet Dry Samples	
01/29/2012	08:38:21					Test = 11.0	
01/29/2012	08:38:21	565	7.8	10.99	78.7		
01/29/2012	08:38:24					Sample # 013534	
01/29/2012	08:38:24	570	7.8	10.99	79.1		
01/29/2012	08:39:17	359	6.2	10.98	84.7		
01/29/2012	08:41:17	40	0.0	11.25	87.1		
01/29/2012	08:43:17	225	4.1	11.29	91.7		
01/29/2012	08:45:17	324	5.8	11.19	100.0		
01/29/2012	08:46:26					Good Returns	
01/29/2012	08:46:26	312	5.8	10.80	106.8		
01/29/2012	08:46:37					Rear Side PTO Failure	
01/29/2012	08:46:37					Start Mixing Rear Side Down	
01/29/2012	08:46:37	319	5.9	10.80	107.9		
01/29/2012	08:47:17	315	5.9	10.93	111.8		
01/29/2012	08:49:17	309	5.9	10.94	123.6		
01/29/2012	08:51:17	316	5.9	11.08	135.3		
01/29/2012	08:53:17	317	5.9	11.04	147.0		
01/29/2012	08:55:17	324	5.9	11.11	158.8		
01/29/2012	08:57:17	323	5.9	10.99	170.6		
01/29/2012	08:59:17	334	5.9	11.08	182.4		
01/29/2012	09:01:17	325	5.9	10.92	194.2		
01/29/2012	09:03:17	334	5.9	11.14	205.9		
01/29/2012	09:05:17	330	5.9	11.07	217.7		
01/29/2012	09:07:17	328	5.9	11.11	229.5		
01/29/2012	09:09:17	323	5.9	10.88	241.3		
01/29/2012	09:11:17	328	5.9	11.02	253.1		
01/29/2012	09:13:17	329	5.9	11.06	264.9		
01/29/2012	09:15:17	324	5.9	10.98	276.8		
01/29/2012	09:17:17	320	5.9	10.90	288.6		
01/29/2012	09:18:55					End Lead Slurry	
01/29/2012	09:18:55	330	5.9	11.10	298.2		
01/29/2012	09:19:17	304	5.9	11.07	300.3		
01/29/2012	09:19:50					Reset Total, Vol = 259.84 bbl	
01/29/2012	09:19:50	334	5.9	11.49	303.6		
01/29/2012	09:21:17	482	5.8	12.75	312.0		

Well DW 8608E-28 P DW 8608E-28 P			Field Grand Vall		Job Start Jan/29/2012	Customer Encana	Job Number BQMF-00613
Date	Time 24-hr clock	Treating Pressure PSI	Flow Rate B/M	Density LB/G	Volume BBL	Message	
01/29/2012	09:21:49	445	5.8	12.50	315.1		
01/29/2012	09:21:52					79 bbl 12.5 Lite FIL	
01/29/2012	09:21:52					Wet Dry Sample	
01/29/2012	09:21:52	435	5.8	12.47	315.4		
01/29/2012	09:21:53					Test = 12.5	
01/29/2012	09:21:53					Sample # 013487	
01/29/2012	09:21:53	435	5.8	12.47	315.5		
01/29/2012	09:22:03					Good Returns	
01/29/2012	09:22:03	421	5.8	12.36	316.5		
01/29/2012	09:23:17	445	5.8	12.53	323.6		
01/29/2012	09:25:17	417	5.8	12.43	335.1		
01/29/2012	09:27:17	430	5.8	12.49	346.7		
01/29/2012	09:29:17	424	5.8	12.43	358.2		
01/29/2012	09:31:17	450	5.8	12.60	369.7		
01/29/2012	09:32:44					End Tail Slurry	
01/29/2012	09:32:44	419	5.8	12.37	378.1		
01/29/2012	09:33:17	400	5.8	12.30	381.3		
01/29/2012	09:35:17	218	4.0	12.22	390.3		
01/29/2012	09:37:17	32	0.0	12.15	393.9		
01/29/2012	09:37:43					Drop Top Plug	
01/29/2012	09:37:43	33	0.0	11.39	393.9		
01/29/2012	09:37:50					Start Displacement	
01/29/2012	09:37:50	45	0.1	11.12	393.9		
01/29/2012	09:37:51					161bbbls Fresh H2o	
01/29/2012	09:37:51					Good Returns	
01/29/2012	09:37:51					Cement To Surface	
01/29/2012	09:37:51					100bbbls To Surface	
01/29/2012	09:37:51	45	0.1	11.08	394.0		
01/29/2012	09:39:17	56	0.6	9.24	394.0		
01/29/2012	09:41:17	256	5.9	8.97	400.8		
01/29/2012	09:43:17	128	4.2	8.64	410.2		
01/29/2012	09:45:17	136	4.0	8.54	418.5		
01/29/2012	09:47:17	123	4.2	8.24	426.7		
01/29/2012	09:49:17	147	4.0	8.41	435.2		
01/29/2012	09:51:17	116	2.7	7.93	442.9		
01/29/2012	09:53:17	108	2.6	8.36	448.1		
01/29/2012	09:55:17	113	2.6	8.40	453.3		
01/29/2012	09:57:17	282	5.7	8.39	459.5		
01/29/2012	09:59:17	311	5.8	8.40	471.0		
01/29/2012	10:01:17	348	5.8	8.39	482.5		
01/29/2012	10:03:17	385	5.7	8.39	494.0		
01/29/2012	10:05:17	425	5.8	8.39	505.5		
01/29/2012	10:07:17	471	5.7	8.39	517.0		
01/29/2012	10:09:11					Reset Total, Vol = 224.38 bbl	
01/29/2012	10:09:11	522	5.7	8.39	527.9		
01/29/2012	10:09:17	520	5.7	8.39	528.5		
01/29/2012	10:11:17	466	4.0	8.39	539.8		
01/29/2012	10:13:17	472	3.9	8.39	547.7		
01/29/2012	10:15:17	413	2.5	8.39	554.3		
01/29/2012	10:17:17	424	2.5	8.39	559.3		
01/29/2012	10:18:58					Bump Top Plug	
01/29/2012	10:18:58	1192	0.9	8.39	563.5		
01/29/2012	10:19:03					Bump To 1200psi	
01/29/2012	10:19:03	1222	0.0	8.39	563.5		

Well			Field		Job Start	Customer	Job Number
DW 8608E-28 P DW 8608E-28 P			Grand Vall		Jan/29/2012	Encana	BQMF-00613
Date	Time 24-hr clock	Treating Pressure PSI	Flow Rate B/M	Density LB/G	Volume BBL	Message	
01/29/2012	10:20:29					End Displacement	
01/29/2012	10:20:29	1198	0.0	8.39	563.5		
01/29/2012	10:21:17	1189	0.0	8.39	563.5		
01/29/2012	10:23:17	1195	0.0	8.39	563.5		
01/29/2012	10:25:17	1197	0.0	8.39	563.5		
01/29/2012	10:26:45					Floats Held	
01/29/2012	10:26:45	13	0.0	8.39	563.5		
01/29/2012	10:26:47					End Job	
01/29/2012	10:26:47	13	0.0	8.39	563.5		
01/29/2012	10:27:17	13	0.0	8.39	563.5		
01/29/2012	10:27:37					Paused Recording	
01/29/2012	10:27:37	14	0.0	8.39	563.5		
01/29/2012	11:21:33					Pump Parasite	
01/29/2012	11:21:33					10 bbl Sugar Water	
01/29/2012	11:21:33					End Job	
01/29/2012	11:21:33	8	0.0	8.43	563.5		
01/29/2012	11:21:34					Rig Down	
01/29/2012	11:21:34	8	0.0	8.43	563.5		
01/29/2012	11:23:17	30	2.2	8.43	564.5		
01/29/2012	11:25:17	330	1.8	8.43	569.8		
01/29/2012	11:27:17	5	0.0	8.43	573.7		
01/29/2012	11:28:11	7	3.2	7.69	573.8		
01/29/2012	11:28:11					Stopped Recording	

Post Job Summary

Average Pump Rates,					Volume of Fluid Injected,				
Slurry	N2		Mud	Maximum Rate	Total Slurry	Mud	Spacer	N2	
Treating Pressure Summary,					Breakdown Fluid				
Maximum	Final	Average	Bump Plug to	Breakdown	Type	Volume		Density	
Avg. N2 Percent		Designed Slurry Volume 320.0 bbl		Displacement	Mix Water Temp 60 degF	Cement Circulated to Surface? <input checked="" type="checkbox"/>		Volume	
						Washed Thru Perfs <input type="checkbox"/>		To	
Customer or Authorized Representative Ira Cox			Schlumberger Supervisor Jordan Moreland			Circulation Lost <input type="checkbox"/>		Job Completed <input checked="" type="checkbox"/>	
						-		-	