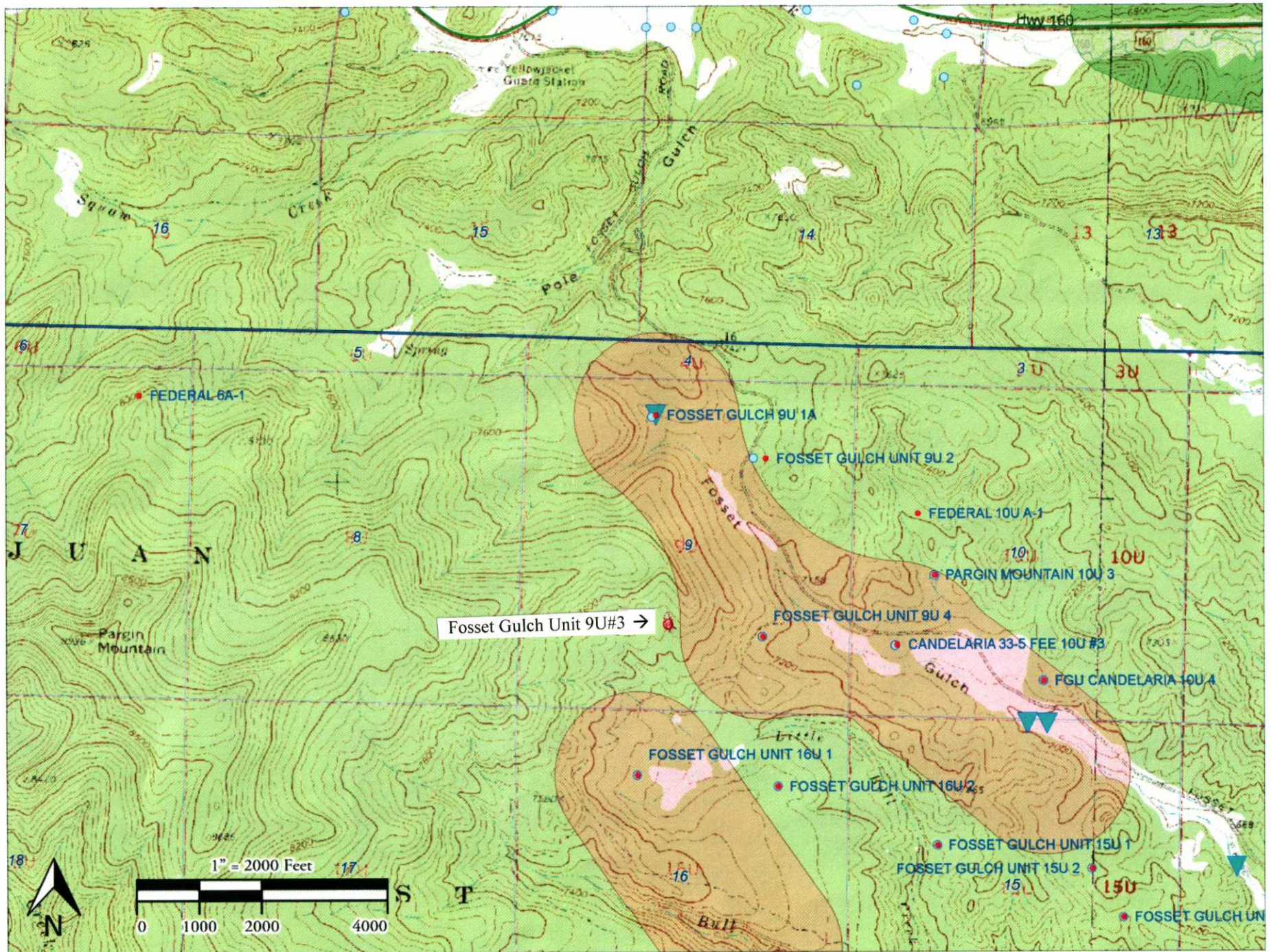
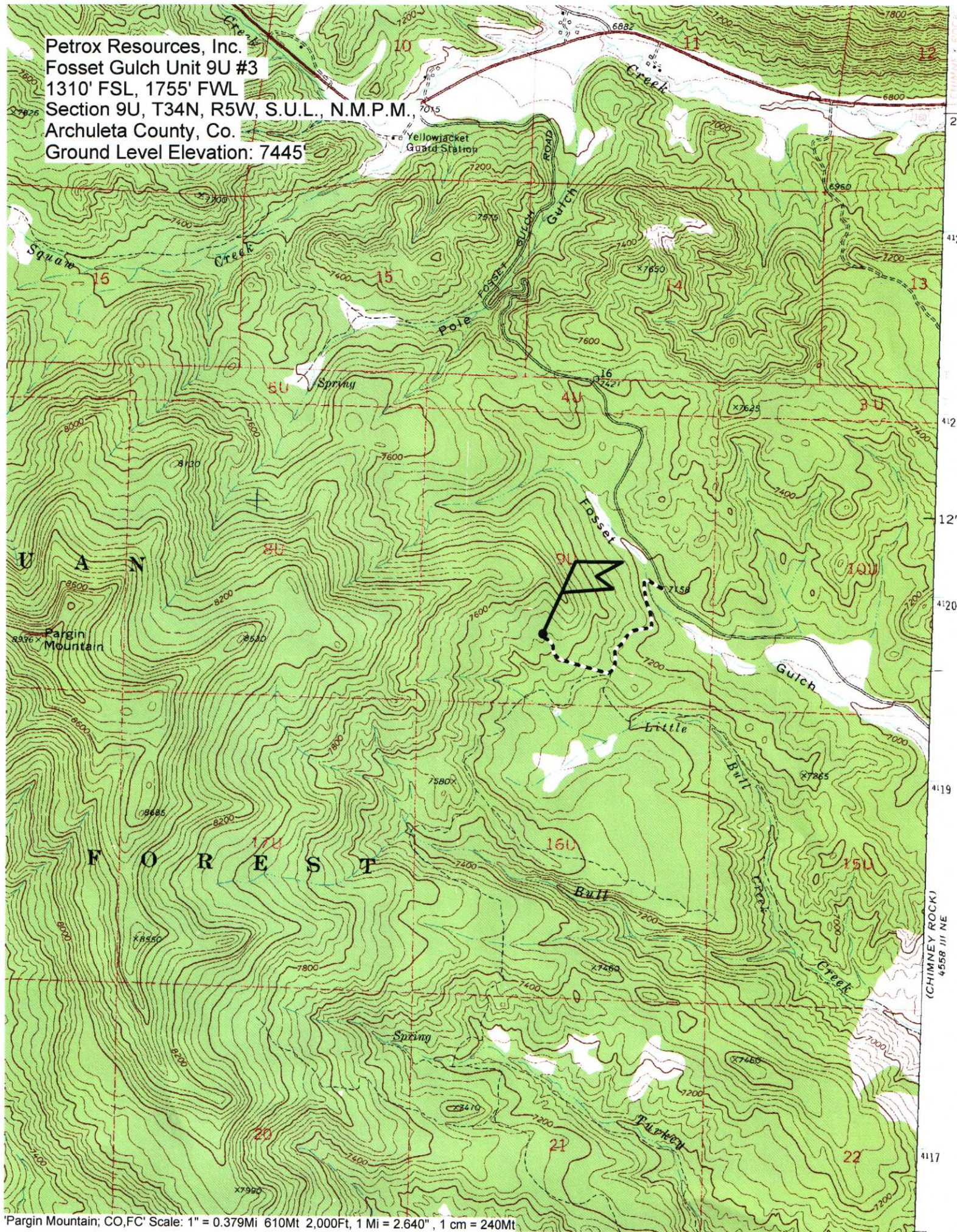


Fosset Gulch Unit 9U#3 APD



Petrox Resources, Inc.
Fosset Gulch Unit 9U #3
1310' FSL, 1755' FWL
Section 9U, T34N, R5W, S.U.L., N.M.P.M.,
Archuleta County, Co.
Ground Level Elevation: 7445'



9U#3 WELL PAD & ACCESS ROAD

Archuleta County, Colorado - December 3, 2010
PETROX RESOURCES, INC., DURANGO, CO
A Colorado Corporation, Mike Clark, President



CALL UNCC
TWO WORKING DAYS
BEFORE YOU DIG
1-800-922-1987
UTILITY NOTIFICATION
CENTER OF COLORADO

SHEET
1
OF
9

Russell Planning & Engineering, Inc.
924 Main Avenue, Unit C
Durango, Colorado 81301
Phone: (970) 385-4548
Fax: (970) 385-4502

PETROX RESOURCES INC.
9U#3
COVER SHEET

Drawn/Checked:
Drafted by:
DATE: 2/23/2011

ACAD FILE: RUSSELL_9U#3_COVER.dwg
REVISIONS: Δ XX

LEGEND

- EXISTING TREE
- EXISTING 10' CONTOUR ELEVATION
- EXISTING 2' CONTOUR ELEVATION
- PROPOSED 10' CONTOUR ELEVATION
- PROPOSED 2' CONTOUR ELEVATION
- PROPOSED DISTURBANCE LIMIT
- DRAINAGE SWALE

WELL ROAD AND PAD DESIGN SHEET INDEX

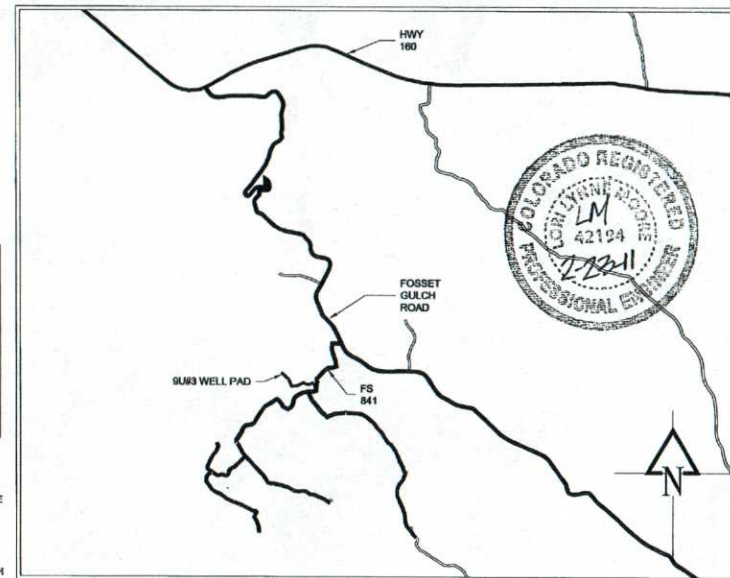
SHEET 1	COVER
SHEET 2-3	9U#3 ACCESS ROAD PLAN AND PROFILES
SHEET 4	9U#3 WELL PAD DESIGN
SHEET 5-6	9U#3 DETAILS
SHEET 7-8	9U#3 ROAD CROSS SECTIONS
SHEET 9	9U#3 DRAINAGE MAP

GENERAL PROJECT DESCRIPTION:
CONTRACTOR SHALL CONSTRUCT A NEW GRAVEL ROAD BED TO SERVE AS THE WELL PAD ACCESS ROAD FOR 9U#3 (1900 FT). THE SITE IS LOCATED ON THE SOUTH SIDE OF FOSSETT GULCH ROAD IN ARCHULETA COUNTY, COLORADO, ON FOREST SERVICE ROAD 841 AS SHOWN ON THE VICINITY MAP PER THIS SHEET. THE WORK SHALL CONFORM TO THE "SURFACE USE PLAN" DOCUMENT FOR "9U#3 & 16U#3-3" AND "FP-03 STANDARD SPECIFICATIONS FOR CONSTRUCTION OF ROADS AND BRIDGES ON FEDERAL HIGHWAY PROJECTS." FP-03 SUPERCEDES THE 1998 FOREST SERVICE SPECIFICATION ("FOREST SERVICE STANDARD SPECIFICATIONS FOR CONSTRUCTION OF ROADS AND BRIDGES"). THE CONTRACTOR SHALL COORDINATE WITH THE PROJECT ENGINEER AND THE FOREST SERVICE IN ACCORDANCE WITH THE STIPULATIONS OF THE ROAD USE PERMIT (RUP), COUNTY/STATE/FEDERAL GOVERNMENT REGULATIONS, AND THE BLM'S CONDITIONS OF APPROVAL.

THE ROAD AND PAD CONSTRUCTION SEQUENCE SHALL BE AS FOLLOWS:

1. ESTABLISH CLEARING LIMITS FOR ROAD AND PAD CONSTRUCTION.
"CONFINED ALL DISTURBANCE TO EXISTING CLEARED AREA AND CONSTRUCTION LIMITS PER FOREST SERVICE "SURFACE USE PLAN" FOR THE 9U#3 WELL. SPECIFICALLY MARKED TREES ARE TO BE REMOVED WHICH ARE LOCATED WITHIN THE CONSTRUCTION DISTURBANCE LIMITS AS IDENTIFIED BY THE TIMBER CRUISE SITE.
 2. FOREST SERVICE (FS) TO APPROVE CLEARING LIMITS AND CONSTRUCTION LIMITS AS WELL AS FLAG TOPSOIL STORAGE AREAS.
 3. CLEAR AND GRUB TREES AND BRUSH
 4. INSTALL NECESSARY EROSION CONTROL MEASURES AND MAINTAIN THEM DURING CONSTRUCTION UNTIL FINAL STABILIZATION IS REACHED.
 5. STRIP TOP 6" OF TOPSOIL AND STORE IN FLAGGED STORAGE AREAS IN ACCORDANCE WITH FP-03 SECTION 204.05.
 6. CONSTRUCT ROADS TO SUBGRADE, SLOPES, AND DITCHES.
A. THE WIDTH OF THE WELL ACCESS ROADS WILL BE 14 FT AS SHOWN ON THE ATTACHED DRAWINGS AND WILL BE CURVE WIDENED FOR DESIGN VEHICLES AS SHOWN ON SHEETS OF THIS SET.
*PROPOSED 2:1 ROAD CONSTRUCTION SLOPES ARE CONSIDERED FINAL FOR RECLAMATION.
 7. INSTALL ALL PROPOSED PIPELINES 6' EITHER SIDE OF CENTERLINE WITHIN THE ROAD CORRIDOR.
 8. INSTALL PROPOSED CULVERTS
 9. GRAVEL ROAD AND PAD:
A. PLACE 8" COMPACTED DEPTH OF CL2
B. PLACE 4" COMPACTED DEPTH OF CL6
*GRAVEL THAT IS IMPACTED BY FLOWLINE CONSTRUCTION OR INTERIM RECLAMATION ACTIVITIES SHALL BE REPLACED, HAULED OFFSITE, OR BURIED UNDER AT LEAST 3' OF FILL IN A CUT AREA AS APPROPRIATE.
 10. DRILL WELL
 11. IF CUTTINGS MEET TABLE 9.10, BURY CUTTINGS IN CUT SLOPE WITH 2' OF COVER. (SEE SHEET 4 FOR LOCATION)
 12. PERFORM RECLAMATION WORK FOR ALL DISTURBED AREAS:
A. SPREAD TOPSOIL 4" DEPTH ON FINAL SLOPES IN ACCORDANCE WITH FP-03 SECTION 624.04
B. PERFORM HORIZONTAL GROUTER TRACKING ON TOPSOILED SLOPES
C. SEEDING SHALL BE IN ACCORDANCE WITH FP-03 625.07 (B)
D. MULCHING SHALL BE IN ACCORDANCE WITH FP-03 (B)
*ALL DISTURBED AREAS WITHIN WELL PAD SHALL BE EITHER SLOPED, TOPSOILED (MINIMUM OF 6" DEPTH) AND HYDROSEEDING OR GRAVELED WITH CLASS 6 (MINIMUM 4" DEPTH). RESEED SLOPES TO ESTABLISH "VEGETATION".
- PAINT ALL SURFACE FACILITIES SUDAN BROWN.

LOCATION MAP



9	2/23/2011	RUSSELL: 9U#3 SUBMITTAL TO FOREST SERVICE FOR REVIEW REVISED SHEETS	ALL SHEETS
8	2/14/2011	RUSSELL: 9U#3 SUBMITTAL TO FOREST SERVICE FOR REVIEW REVISED SHEETS	ALL SHEETS
7	2/1/2011	RUSSELL: 9U#3 SUBMITTAL TO FOREST SERVICE FOR REVIEW REVISED EQUIPMENT	ALL SHEETS
6	1/5/2011	RUSSELL: 9U#3 SUBMITTAL TO FOREST SERVICE FOR REVIEW REVISED EQUIPMENT	ALL SHEETS
5	12/6/10	RUSSELL: 9U#3 SUBMITTAL TO FOREST SERVICE FOR REVIEW	ALL SHEETS
4	11/19/10	RUSSELL: ONSITE WALK OF 9U#3 ACCESS ROAD W/ FOREST SERVICE TO REVIEW STAKED ALIGNMENT	
3	12/30/09	GAS AND WATER PIPES ADDED TO ROAD DESIGN	
2	1/23/09	FIRST SUBMITTAL TO FOREST SERVICE FOR REVIEW. SENT COPIES TO PETROX AND EXOK FOR REVIEW.	ALL SHEETS
1	10/14/08	PERFORM FIRST ONSITE WALK OF ACCESS ROADS WITH FOREST SERVICE TO REVIEW POTENTIAL DRAINAGE ISSUES. SEND COPY SENT TO MIKE CLARK.	ALL SHEETS

ACCEPTED

TEE CONNECTION
SEE PLANS BY
PEREGRINE GROUP
DATED 5/28/99

APPROX. LOCATION
OF EXISTING VALVE
BOX

EXISTING 18" CMP

15' WIDE
ACCESS ROAD

DIRECT DRAINAGE DITCH TO DRAIN
TO EXISTING 18" CMP TO THE NORTH
1' DEPTH, 2:1 SIDE SLOPES

25' WIDE
FS 64' ROAD

CURVE
WIDENING 17.5'

V-DITCH
SEE TYPICAL ACCESS
ROAD SECTION DETAIL,
SHEET 5

INSTALL 18 inch CMP, 45° SKEW
WITH RIPRAP OUTLET
SEE SHEET 6 FOR CULVERT & RIPRAP
INSTALLATION DETAILS

CULVERT INLET
PROTECTION (TYP.)
SEE SHEET 6 FOR
INSTALLATION DETAILS

STRAW WATTLE (TYP.)
SEE SHEET 6 FOR
INSTALLATION DETAILS

PROPOSED GAS AND
WATERLINE

INSTALL 2 ROCK CHECK DAMS
UPSTREAM OF CULVERT INLETS
WHERE FLOWLINE IS STEEPENED TO
PROVIDE MINIMUM COVER OVER
CULVERT (TYP.)
SEE SHEET 6 FOR INSTALLATION
DETAILS

STRAW WATTLES (TYP.)

CURVE
WIDENING 17.3'

IF NECESSARY, DIG DITCH TO
PROVIDE POSITIVE DRAINAGE FROM
FLAT AREA

EDGE OF PROPOSED GRAVEL ROAD,
14' WIDE (TYP) EXCEPT WHERE
NOTED OTHERWISE

TOPO BOUNDARY (TYP.)

CURVE
WIDENING 12.1'

STRAW WATTLE (TYP.)
SEE SHEET 6 FOR
INSTALLATION DETAILS

C.W. STA 5+19

C.W. STA 6+35

AREA OF INTERPOLATED
TOPO FOR FINAL
PROPOSED SURFACE
CREATION

CURVE
WIDENING 9.5'

DISTURBANCE LIMIT IS
DEFINED AS 40' WIDE (TYP.)
UNLESS WIDENED FOR
ULTIMATE GRADING
SLOPES

DIRECT DRAINAGE TO
EXISTING FLAT AREA

CULVERT INLET
PROTECTION (TYP.)
SEE SHEET 6 FOR
INSTALLATION DETAILS

INSTALL 18 inch CMP
WITH RIPRAP OUTLET
SEE SHEET 6 FOR CULVERT & RIPRAP
INSTALLATION DETAILS

NOTES:

1. CONTRACTOR SHALL WALK ALL AREAS WITH FOREST SERVICE AND ENGINEER PRIOR TO CONSTRUCTION ACTIVITIES.
2. CONTRACTOR SHALL MAKE EFFORTS TO MINIMIZE IMPACTS TO SURROUNDING VEGETATION.
3. CONTRACTOR SHALL ADJUST CULVERTS TO MATCH VARIED FIELD CONDITIONS.



CALL UNCE
TWO WORKING DAYS
BEFORE YOU DIG
1-800-922-1987
UTILITY NOTIFICATION
CENTER OF COLORADO

PLAN
SCALE: 1" = 80' (11x17)
SCALE: 1" = 40' (24x36)
80' 40' 20' 0' 40'



SHEET
2
OF
9

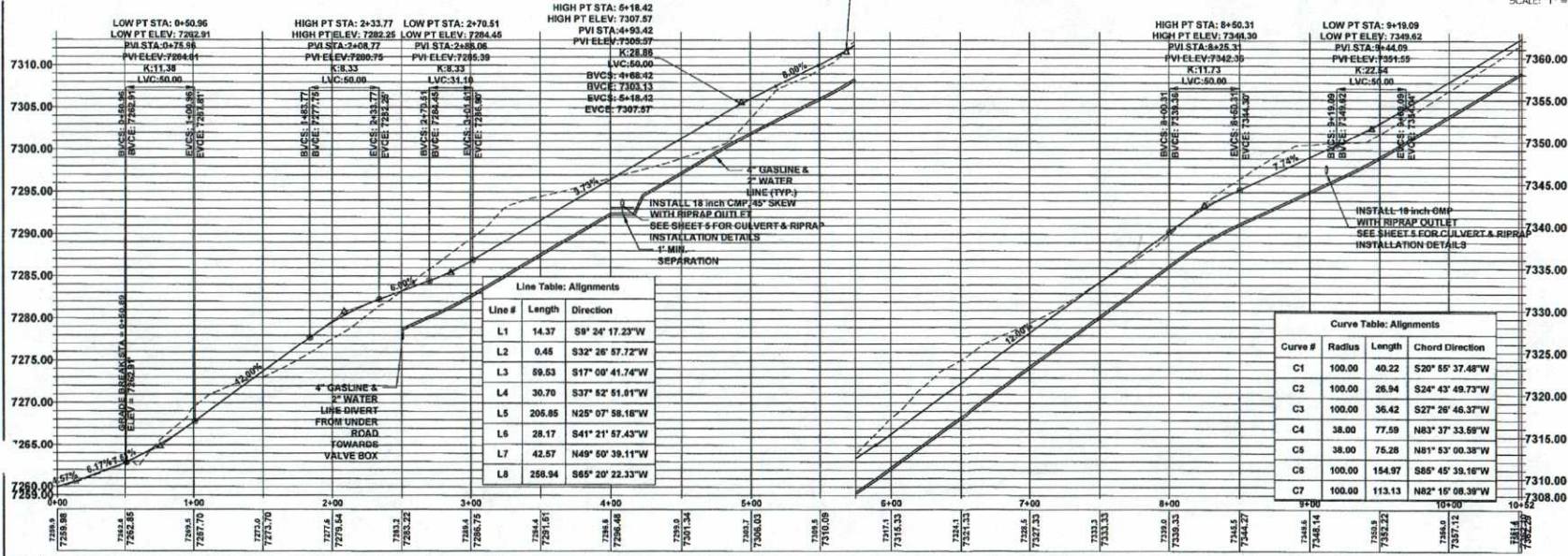
Russell Planning &
Engineering, Inc.
Civil Engineering Services
934 Main Avenue, Unit C
Durango, Colorado 81301
Phone: (970) 366-4546
Fax: (970) 366-4502

PETRO RESOURCES INC.
9193 ACCESS ROAD
PLAN AND PROFILE SHEET

Drawn/Checked:
Dated by:
DATE: 2/23/2011

ACAD FILE: RUSSELL_9193.dwg
REVISIONS: Δ xx

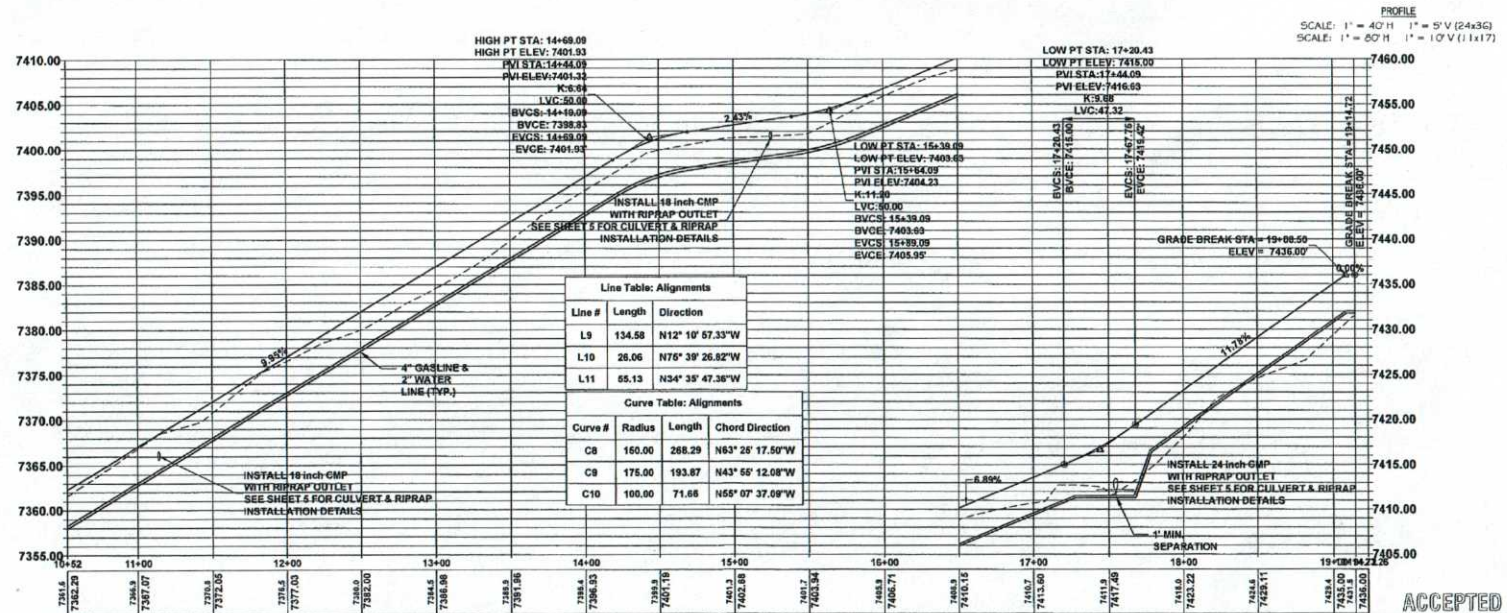
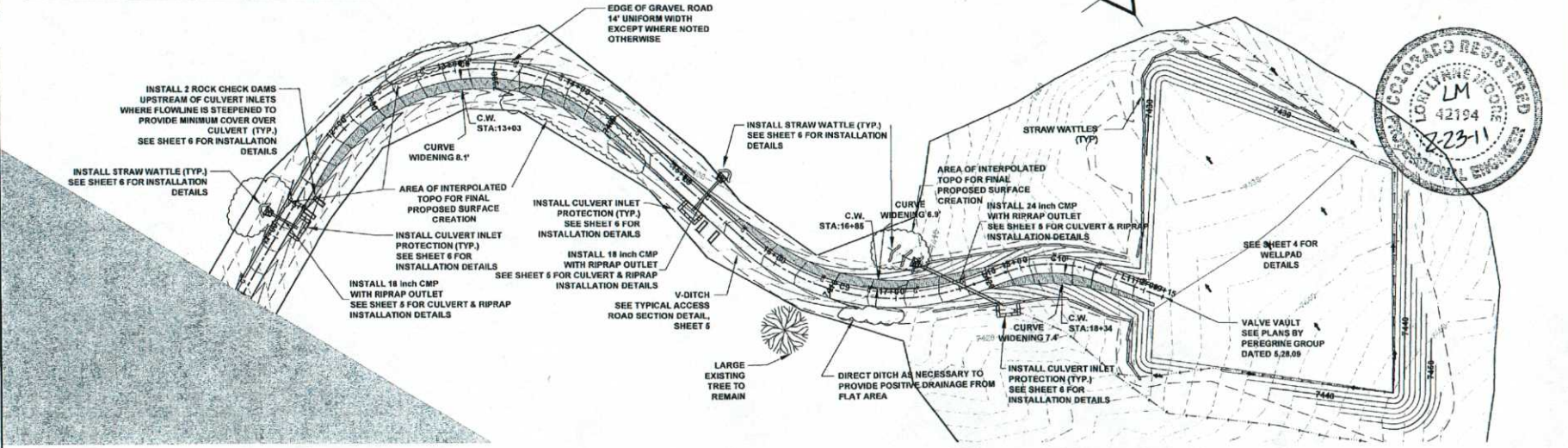
PROFILE
SCALE: 1" = 40' H 1" = 5' V (24x36)
SCALE: 1" = 80' H 1" = 10' V (11x17)



ACCEPTED

NOTES:

1. CONTRACTOR SHALL WALK ALL AREAS WITH FOREST SERVICE AND ENGINEER PRIOR TO CONSTRUCTION ACTIVITIES.
2. CONTRACTOR SHALL MAKE EFFORTS TO MINIMIZE IMPACTS TO SURROUNDING VEGETATION.
3. CONTRACTOR SHALL ADJUST CULVERTS TO MATCH VARIED FIELD CONDITIONS.



SHEET 3 OF 9

Russell Planning & Engineering, Inc.
Civil Engineering Services
904 Main Avenue, Unit C
Durango, Colorado 81301
Phone: (970) 385-4546
Fax: (970) 385-4508

PETRO RESOURCES INC.
9043 ACCESS ROAD
PLAN AND PROFILE SHEET

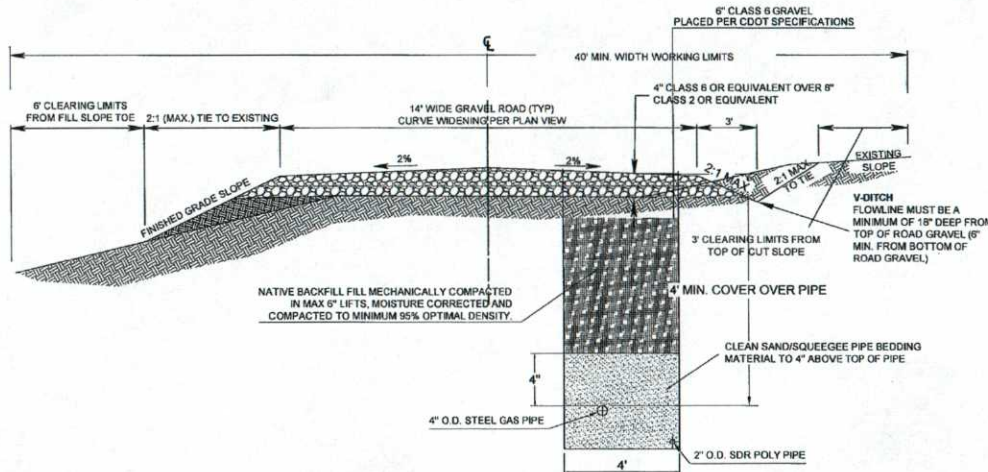
Drawn/Checked:
Date: 2/23/2011

ACAD FILE: RUSSELL_9043.dwg
REVISIONS:
DATE: 2/23/2011



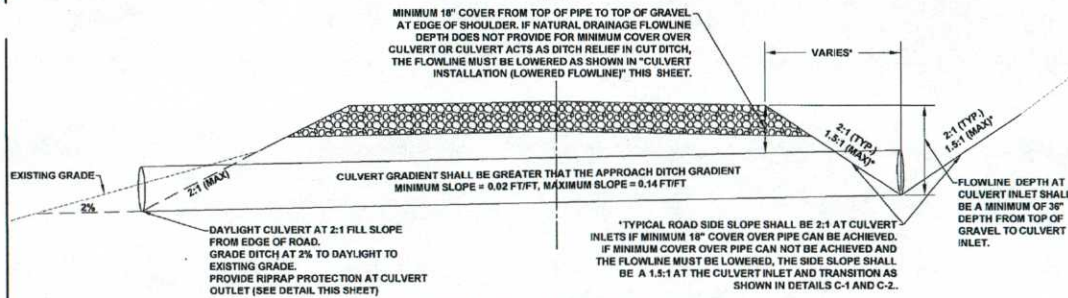
CALL UNCE
TWO WORKING DAYS
BEFORE YOU DIG
1-800-922-1987
UTILITY NOTIFICATION
CENTER OF COLORADO

SHEET
5
OF
9



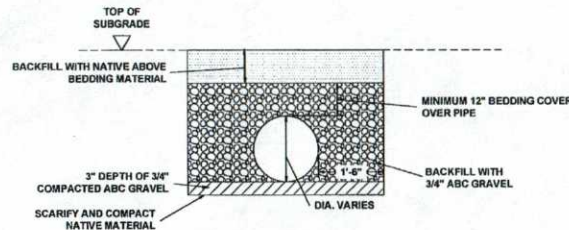
TYPICAL ACCESS ROAD SECTION

NTS



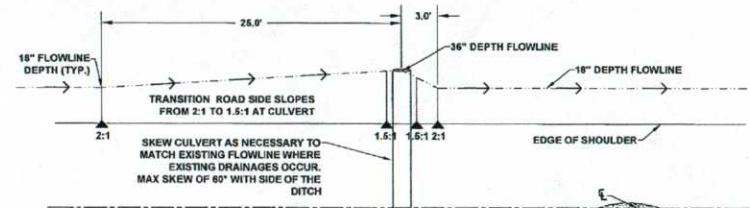
CULVERT INSTALLATION (LOWERED FLOWLINE)

NTS



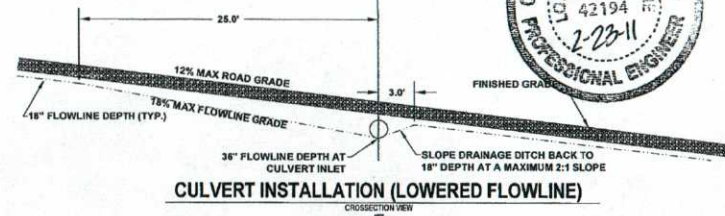
CULVERT BEDDING DETAIL

NTS



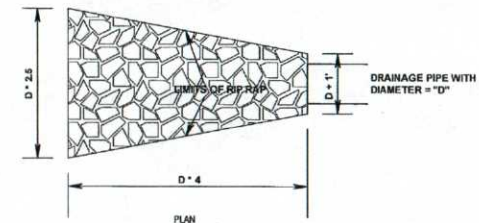
CULVERT INSTALLATION (LOWERED FLOWLINE)

PLAN VIEW



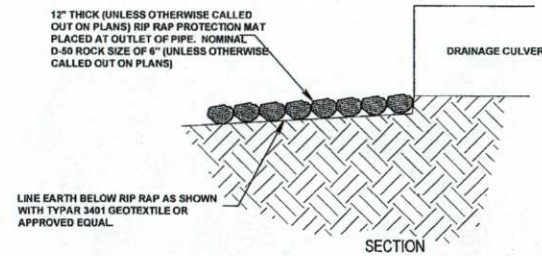
CULVERT INSTALLATION (LOWERED FLOWLINE)

CROSSSECTION VIEW



RIPRAP OUTLET DETAIL

NTS



ACCEPTED

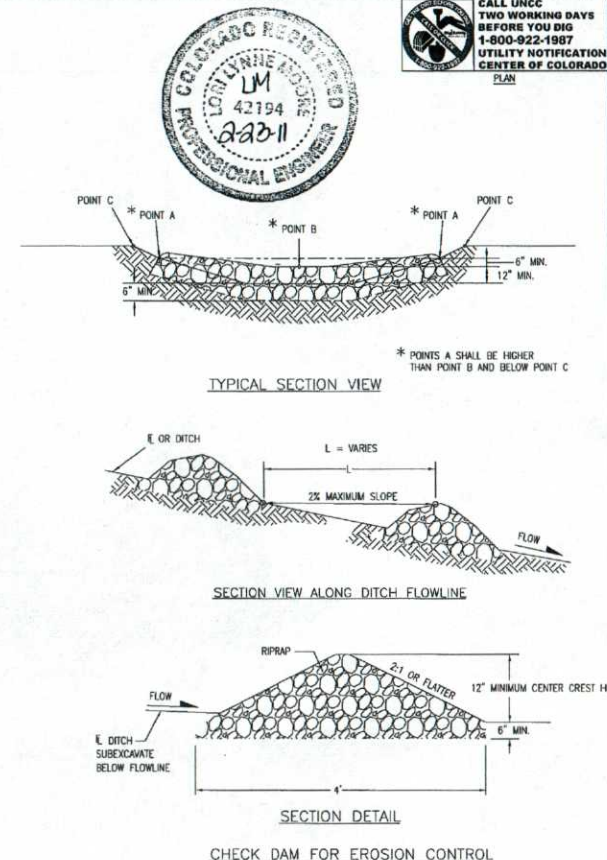
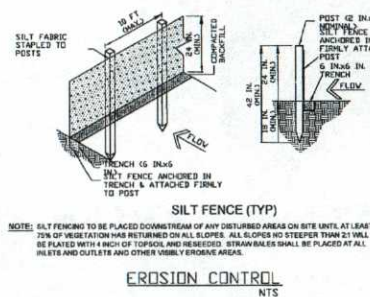
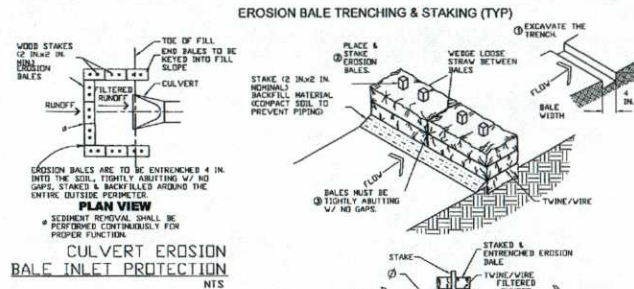
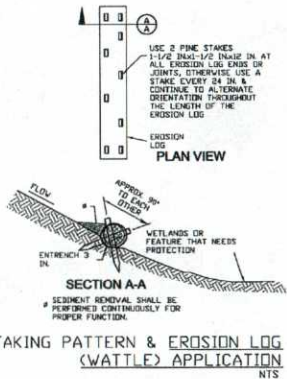
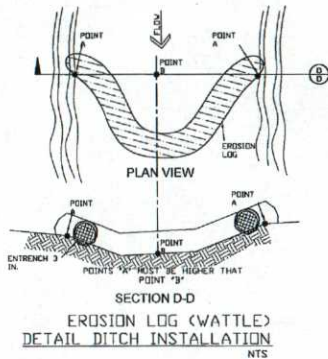
Russell Planning & Engineering, Inc.
Civil Engineering Services
934 Main Avenue, Unit C
Durango, Colorado 81301
Phone: (970) 388-4546
Fax: (970) 388-4502

PETRO RESOURCES INC.
9043 DETAILS

Drawn/Checked:
Drafted by:
DATE: 2/23/2011

ACAD FILE: RUSSELL_9043_details.dwg

REVISIONS: Δ XX



- NOTES:
1. RIPRAP SIZE D550 = 6 IN. OR AS SHOWN ON THE PLANS.
 2. THE ENDS OF RIPRAP CHECK DAM SHALL BE A MINIMUM OF 6 IN. HIGHER THAN CENTER OF CHECK DAM.
 3. SEDIMENT SHALL BE REMOVED WHEN THE DEPTH UPSTREAM FROM CHECK DAM IS 1/2 THE CREST HEIGHT.
 4. CHECK DAMS MAY BE TEMPORARY OR PERMANENT AS SHOWN ON THE PLANS.



CALL UNCE
TWO WORKING DAYS
BEFORE YOU DIG
1-800-922-1987
UTILITY NOTIFICATION
CENTER OF COLORADO

SHEET
6 OF 9

Russell Planning & Engineering, Inc.
904 Main Avenue, Unit C
Durango, Colorado 81301
Phone: (970) 385-4546
Fax: (970) 385-4502

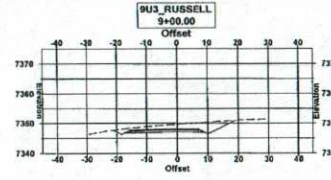
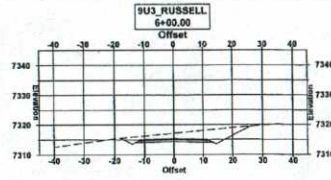
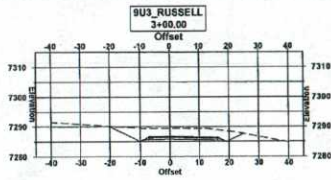
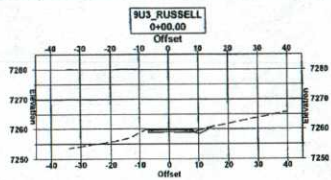
PETROX RESOURCES INC.
9093 DETAILS

Drawn/Checked:
Drafted by:
DATE: 2/23/2011

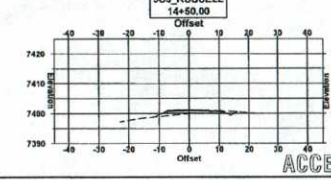
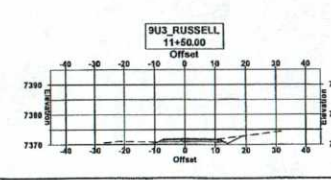
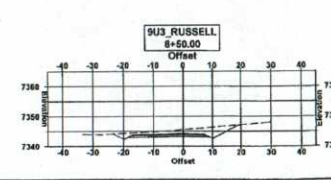
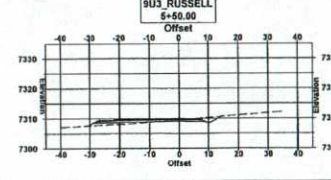
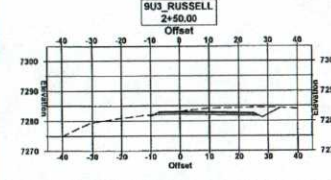
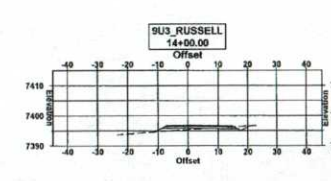
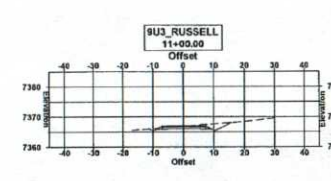
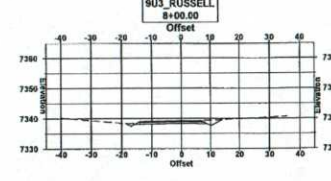
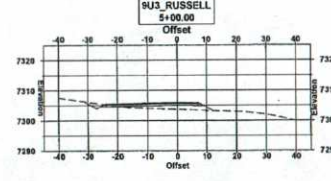
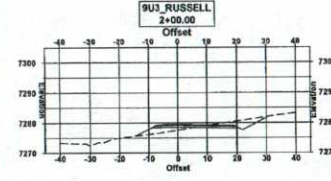
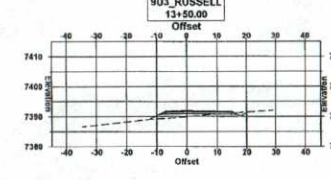
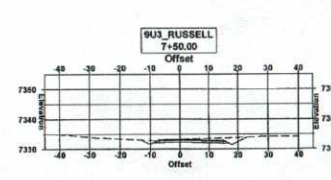
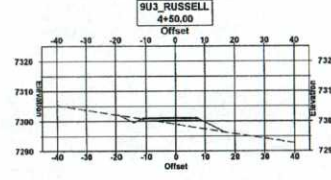
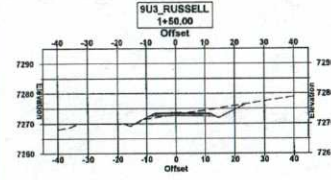
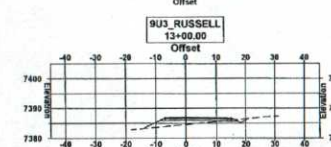
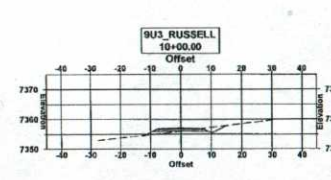
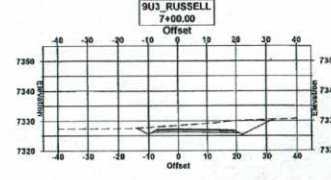
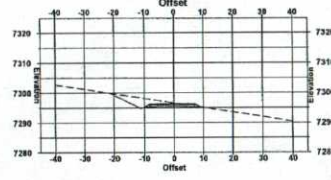
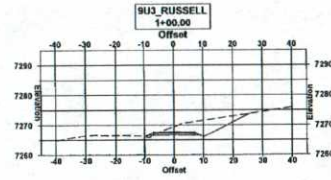
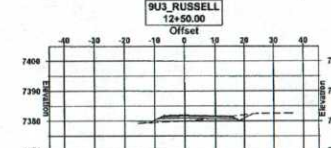
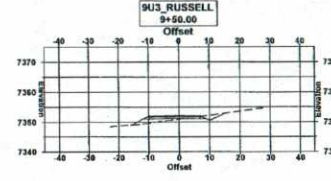
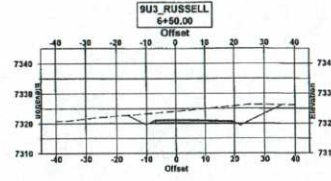
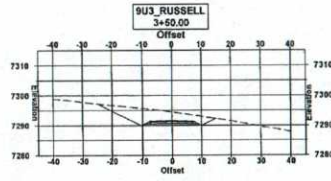
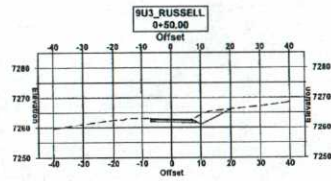
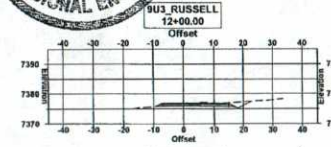
ACAD FILE: RUSSELL_9093_details.dwg

REVISIONS: A xx

ACCEPTED

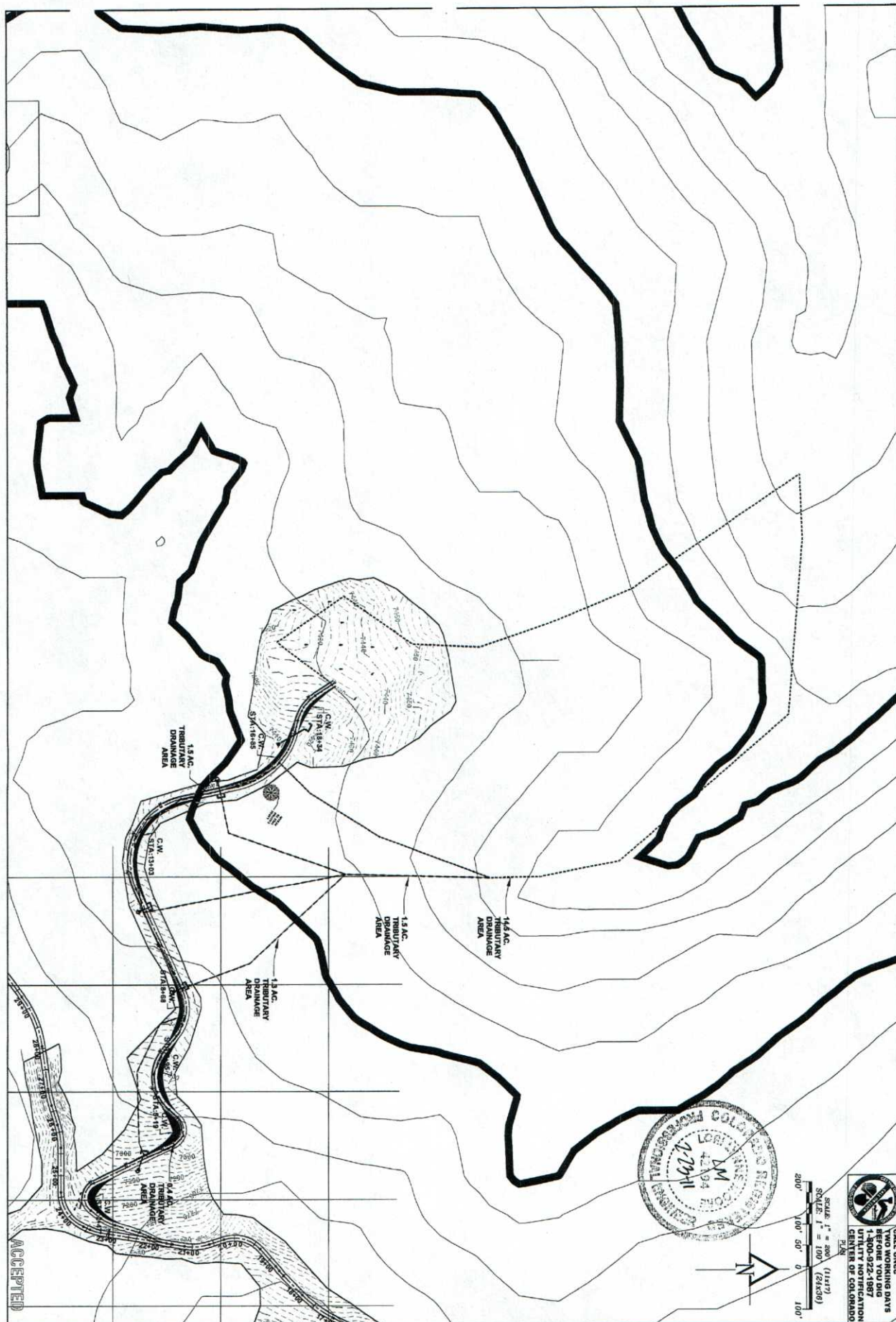


CALL UNCC
TWO WORKING DAYS
BEFORE YOU DIG
1-800-922-1987
UTILITY NOTIFICATION
CENTER OF COLORADO
PLAN
SCALE: 1" = 40' (11x17)
SCALE: 1" = 20' (24x36)
40' 20' 10' 0 20'



ACCEPTED

Russell Planning & Engineering, Inc. 934 Main Avenue, Unit C Durango, Colorado 81301 Phone: (970) 386-4546 Fax: (970) 386-4502	SHEET 7 OF 9
	Drawn/Checked: Drafted by: DATE: 2/23/2011
PETROX RESOURCES INC. 9U#3 ROAD CROSS SECTIONS	
ACAD FILE: RUSSELL_9U#3.dwg REVISIONS: Δ xx	



ACAD FILE: RUSSELL_9U#3.dwg
 REVISIONS: A xx

Drawn/Checked:
 Drafted by:
 DATE: 2/23/2011

PETROX RESOURCES INC.
 9U#3 DRAINAGE

Russell Planning & Engineering, Inc.
 Civil Engineering Services
 834 Main Avenue, Unit C
 Durango, Colorado 81301
 Phone: (970) 385-4546
 Fax: (970) 385-4502

CALL UNITS
 BEFORE YOU DIG
 1-800-922-1987
 UTILITY NOTIFICATION
 CENTER OF COLORADO

SHEET
 8
 OF
 9