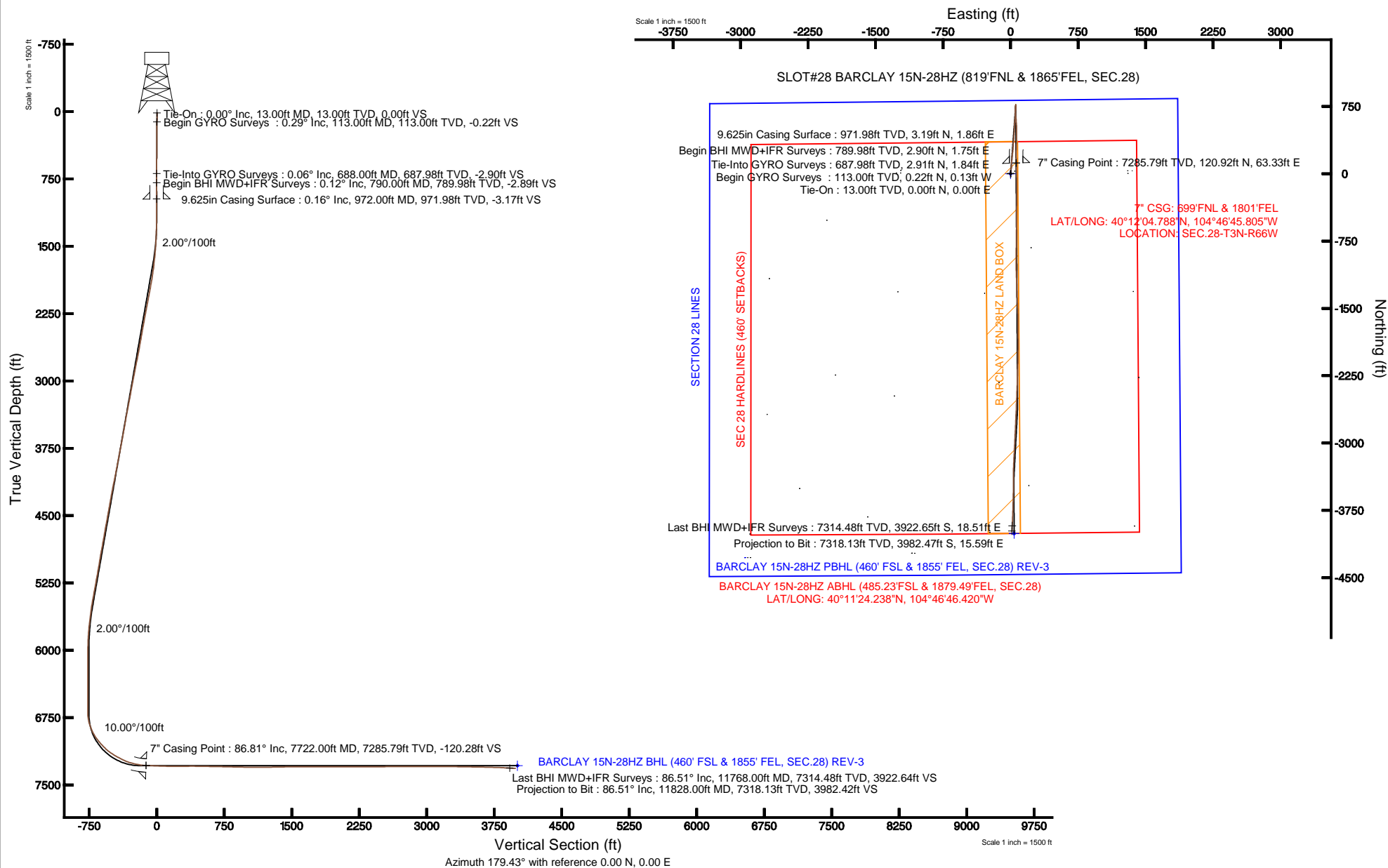


KERR-MCGEE OIL & GAS ONSHORE LP

Location: COLORADO Slot: SLOT#28 BARCLAY 15N-28HZ (819'FNL & 1865'FEL, SEC.28)
 Field: WELD COUNTY (KERR MCGEE) Well: BARCLAY 15N-28HZ
 Facility: SEC.28-T3N-R66W Wellbore: BARCLAY 15N-28HZ PWB

Plot reference wellpath is BARCLAY 15N-28HZ (REV-B.0) PWP

True vertical depths are referenced to Ensign 145 (KB)	Grid System: NAD83 / Lambert Colorado SP, Northern Zone (501), US feet
Measured depths are referenced to Ensign 145 (KB)	North Reference: True north
Ensign 145 (KB) to Mean Sea Level: 4979 feet	Scale: True distance
Mean Sea Level to Mud line (At Slot: SLOT#28 BARCLAY 15N-28HZ (819'FNL & 1865'FEL, SEC.28)): 0 feet	Depths are in feet
Coordinates are in feet referenced to Slot	Created by: wilsjeff02 on 3/19/2013





Actual Wellpath Report

BARCLAY 15N-28HZ_AWP

Page 1 of 7



REFERENCE WELLPATH IDENTIFICATION			
Operator	KERR-MCGEE OIL & GAS ONSHORE LP	Slot	SLOT#28 BARCLAY 15N-28HZ (819'FNL & 1865'FEL, SEC.28)
Area	COLORADO	Well	BARCLAY 15N-28HZ
Field	WELD COUNTY (KERR MCGEE)	Wellbore	BARCLAY 15N-28HZ AWB
Facility	SEC.28-T3N-R66W		

REPORT SETUP INFORMATION			
Projection System	NAD83 / Lambert Colorado SP, Northern Zone (501), US feet	Software System	WellArchitect® 3.0.0
North Reference	True	User	Precain
Scale	0.999957	Report Generated	1/30/2013 at 10:09:48 AM
Convergence at slot	0.47° East	Database/Source file	WellArchitectDB/BARCLAY_15N-28HZ_AWB.xml

WELLPATH LOCATION						
	Local coordinates		Grid coordinates		Geographic coordinates	
	North[ft]	East[ft]	Easting[US ft]	Northing[US ft]	Latitude	Longitude
Slot Location	4277.76	2951.39	3201220.86	1316883.39	40°12'03.593"N	104°46'46.621"W
Facility Reference Pt			3198303.94	1312582.33	40°11'21.322"N	104°47'24.657"W
Field Reference Pt			3197771.84	1268891.29	40°04'09.600"N	104°47'36.000"W

WELLPATH DATUM			
Calculation method	Minimum curvature	Ensign 145 (KB) to Facility Vertical Datum	4979.00ft
Horizontal Reference Pt	Slot	Ensign 145 (KB) to Mean Sea Level	4979.00ft
Vertical Reference Pt	Ensign 145 (KB)	Ensign 145 (KB) to Mud Line at Slot (SLOT#28 BARCLAY 15N-28HZ (819'FNL & 1865'FEL, SEC.28))	4979.00ft
MD Reference Pt	Ensign 145 (KB)	Section Origin	N 0.00, E 0.00 ft
Field Vertical Reference	Mean Sea Level	Section Azimuth	179.78°



Actual Wellpath Report

BARCLAY 15N-28HZ_AWP

Page 2 of 7



REFERENCE WELLPATH IDENTIFICATION

Operator	KERR-MCGEE OIL & GAS ONSHORE LP	Slot	SLOT#28 BARCLAY 15N-28HZ (819'FNL & 1865'FEL, SEC.28)
Area	COLORADO	Well	BARCLAY 15N-28HZ
Field	WELD COUNTY (KERR MCGEE)	Wellbore	BARCLAY 15N-28HZ AWB
Facility	SEC.28-T3N-R66W		

WELLPATH DATA (150 stations) † = interpolated/extrapolated station

MD [ft]	Inclination [°]	Azimuth [°]	TVD [ft]	Vert Sect [ft]	North [ft]	East [ft]	Latitude	Longitude	DLS [°/100ft]	Comments
0.00†	0.000	329.890	0.00	0.00	0.00	0.00	40°12'03.593"N	104°46'46.621"W	0.00	
13.00	0.000	329.890	13.00	0.00	0.00	0.00	40°12'03.593"N	104°46'46.621"W	0.00	Tie-On
113.00	0.290	329.890	113.00	-0.22	0.22	-0.13	40°12'03.595"N	104°46'46.623"W	0.29	Begin GYRO Surveys
213.00	0.420	336.810	213.00	-0.78	0.77	-0.40	40°12'03.601"N	104°46'46.626"W	0.14	
313.00	0.500	16.810	312.99	-1.53	1.53	-0.42	40°12'03.608"N	104°46'46.626"W	0.32	
413.00	0.660	53.860	412.99	-2.29	2.29	0.17	40°12'03.616"N	104°46'46.619"W	0.40	
513.00	0.450	78.990	512.99	-2.70	2.70	1.03	40°12'03.620"N	104°46'46.608"W	0.32	
613.00	0.300	67.290	612.98	-2.87	2.88	1.65	40°12'03.621"N	104°46'46.600"W	0.17	
688.00	0.060	173.490	687.98	-2.91	2.91	1.84	40°12'03.622"N	104°46'46.597"W	0.43	Tie-Into GYRO Surveys
790.00	0.120	293.630	789.98	-2.90	2.90	1.75	40°12'03.622"N	104°46'46.598"W	0.16	Begin BHI MWD+IFR Surveys
882.00	0.280	38.080	881.98	-3.11	3.12	1.80	40°12'03.624"N	104°46'46.598"W	0.36	
974.00	0.170	215.300	973.98	-3.18	3.19	1.86	40°12'03.624"N	104°46'46.597"W	0.49	
1066.00	0.160	233.990	1065.98	-2.99	3.00	1.67	40°12'03.623"N	104°46'46.599"W	0.06	
1158.00	0.260	298.930	1157.98	-3.02	3.02	1.39	40°12'03.623"N	104°46'46.603"W	0.26	
1250.00	1.270	15.730	1249.97	-4.10	4.11	1.48	40°12'03.634"N	104°46'46.602"W	1.34	
1342.00	2.150	2.990	1341.93	-6.80	6.81	1.85	40°12'03.660"N	104°46'46.597"W	1.04	
1435.00	3.100	5.940	1434.83	-11.05	11.05	2.20	40°12'03.702"N	104°46'46.593"W	1.03	
1527.00	4.230	5.740	1526.64	-16.89	16.90	2.80	40°12'03.760"N	104°46'46.585"W	1.23	
1619.00	5.830	4.470	1618.29	-24.93	24.94	3.50	40°12'03.839"N	104°46'46.576"W	1.74	
1711.00	6.790	5.260	1709.73	-35.00	35.01	4.36	40°12'03.939"N	104°46'46.565"W	1.05	
1803.00	8.240	4.280	1800.93	-46.98	47.00	5.35	40°12'04.057"N	104°46'46.552"W	1.58	
1896.00	9.720	6.490	1892.79	-61.42	61.45	6.74	40°12'04.200"N	104°46'46.534"W	1.63	
1990.00	10.730	6.330	1985.30	-78.00	78.03	8.60	40°12'04.364"N	104°46'46.510"W	1.07	
2085.00	11.100	4.500	2078.58	-95.90	95.94	10.29	40°12'04.541"N	104°46'46.488"W	0.53	
2180.00	10.140	1.880	2171.95	-113.37	113.41	11.28	40°12'04.714"N	104°46'46.476"W	1.13	
2275.00	10.890	5.840	2265.36	-130.65	130.70	12.47	40°12'04.885"N	104°46'46.460"W	1.10	
2370.00	10.500	4.230	2358.71	-148.20	148.26	14.02	40°12'05.058"N	104°46'46.440"W	0.52	
2464.00	9.460	359.620	2451.29	-164.47	164.53	14.60	40°12'05.219"N	104°46'46.433"W	1.39	
2559.00	10.180	6.310	2544.90	-180.62	180.68	15.47	40°12'05.378"N	104°46'46.422"W	1.42	
2654.00	10.550	7.660	2638.35	-197.57	197.64	17.56	40°12'05.546"N	104°46'46.395"W	0.47	
2749.00	11.210	7.090	2731.64	-215.35	215.43	19.85	40°12'05.722"N	104°46'46.365"W	0.70	
2844.00	11.400	7.300	2824.79	-233.81	233.90	22.19	40°12'05.904"N	104°46'46.335"W	0.20	
2939.00	10.980	5.900	2917.99	-252.12	252.22	24.31	40°12'06.085"N	104°46'46.308"W	0.53	
3033.00	10.730	5.300	3010.31	-269.73	269.83	26.04	40°12'06.259"N	104°46'46.285"W	0.29	
3128.00	10.190	3.900	3103.73	-286.91	287.02	27.43	40°12'06.429"N	104°46'46.268"W	0.63	
3223.00	10.360	4.300	3197.20	-303.81	303.92	28.64	40°12'06.596"N	104°46'46.252"W	0.19	
3318.00	11.400	2.740	3290.49	-321.70	321.82	29.73	40°12'06.773"N	104°46'46.238"W	1.14	
3413.00	9.930	3.310	3383.85	-339.25	339.38	30.65	40°12'06.947"N	104°46'46.226"W	1.55	
3508.00	10.110	7.800	3477.40	-355.69	355.82	32.26	40°12'07.109"N	104°46'46.205"W	0.84	
3602.00	10.430	7.140	3569.90	-372.30	372.43	34.43	40°12'07.273"N	104°46'46.177"W	0.36	
3697.00	10.410	3.620	3663.33	-389.39	389.53	36.04	40°12'07.442"N	104°46'46.156"W	0.67	
3792.00	10.520	3.350	3756.75	-406.61	406.75	37.09	40°12'07.613"N	104°46'46.143"W	0.13	
3887.00	11.010	3.680	3850.08	-424.31	424.47	38.18	40°12'07.788"N	104°46'46.129"W	0.52	
3982.00	10.500	4.020	3943.41	-442.00	442.15	39.37	40°12'07.962"N	104°46'46.114"W	0.54	
4077.00	11.180	4.260	4036.71	-459.81	459.97	40.66	40°12'08.138"N	104°46'46.097"W	0.72	



Actual Wellpath Report

BARCLAY 15N-28HZ_AWP

Page 3 of 7



REFERENCE WELLPATH IDENTIFICATION

Operator	KERR-MCGEE OIL & GAS ONSHORE LP	Slot	SLOT#28 BARCLAY 15N-28HZ (819'FNL & 1865'FEL, SEC.28)
Area	COLORADO	Well	BARCLAY 15N-28HZ
Field	WELD COUNTY (KERR MCGEE)	Wellbore	BARCLAY 15N-28HZ AWB
Facility	SEC.28-T3N-R66W		

WELLPATH DATA (150 stations)

MD [ft]	Inclination [°]	Azimuth [°]	TVD [ft]	Vert Sect [ft]	North [ft]	East [ft]	Latitude	Longitude	DLS [°/100ft]	Comments
4172.00	11.550	2.570	4129.85	-478.49	478.66	41.77	40°12'08.323"N	104°46'46.083"W	0.52	
4266.00	10.600	4.250	4222.10	-496.51	496.68	42.83	40°12'08.501"N	104°46'46.069"W	1.07	
4361.00	10.140	2.200	4315.55	-513.58	513.75	43.80	40°12'08.670"N	104°46'46.056"W	0.62	
4456.00	10.180	0.460	4409.06	-530.33	530.50	44.19	40°12'08.835"N	104°46'46.051"W	0.33	
4551.00	10.400	3.150	4502.53	-547.28	547.46	44.73	40°12'09.003"N	104°46'46.045"W	0.56	
4646.00	10.470	3.770	4595.96	-564.45	564.63	45.77	40°12'09.173"N	104°46'46.031"W	0.14	
4740.00	9.450	2.790	4688.54	-580.68	580.87	46.71	40°12'09.333"N	104°46'46.019"W	1.10	
4835.00	10.340	4.670	4782.13	-596.96	597.15	47.78	40°12'09.494"N	104°46'46.005"W	1.00	
4930.00	10.480	4.880	4875.57	-614.06	614.26	49.21	40°12'09.663"N	104°46'45.987"W	0.15	
5025.00	9.440	7.350	4969.13	-630.39	630.59	50.94	40°12'09.825"N	104°46'45.964"W	1.18	
5120.00	9.630	4.130	5062.82	-646.04	646.25	52.51	40°12'09.979"N	104°46'45.944"W	0.60	
5215.00	10.110	1.770	5156.41	-662.29	662.51	53.34	40°12'10.140"N	104°46'45.934"W	0.66	
5310.00	10.300	2.330	5249.91	-679.11	679.33	53.94	40°12'10.306"N	104°46'45.926"W	0.23	
5404.00	10.440	4.120	5342.38	-696.00	696.22	54.90	40°12'10.473"N	104°46'45.914"W	0.37	
5499.00	10.000	4.260	5435.87	-712.80	713.03	56.13	40°12'10.639"N	104°46'45.898"W	0.46	
5594.00	8.720	5.760	5529.60	-728.19	728.42	57.46	40°12'10.791"N	104°46'45.880"W	1.37	
5689.00	7.070	3.480	5623.70	-741.19	741.42	58.54	40°12'10.920"N	104°46'45.867"W	1.77	
5784.00	6.070	3.440	5718.07	-752.03	752.27	59.20	40°12'11.027"N	104°46'45.858"W	1.05	
5879.00	4.540	339.170	5812.68	-760.57	760.80	58.16	40°12'11.111"N	104°46'45.871"W	2.82	
5974.00	2.470	328.450	5907.49	-765.84	766.06	55.75	40°12'11.163"N	104°46'45.902"W	2.28	
6069.00	0.770	300.250	6002.45	-767.91	768.13	54.13	40°12'11.184"N	104°46'45.923"W	1.92	
6164.00	0.550	302.740	6097.45	-768.48	768.69	53.19	40°12'11.189"N	104°46'45.935"W	0.23	
6259.00	0.490	295.440	6192.44	-768.90	769.11	52.44	40°12'11.193"N	104°46'45.945"W	0.09	
6353.00	0.490	294.320	6286.44	-769.24	769.45	51.71	40°12'11.197"N	104°46'45.955"W	0.01	
6448.00	1.240	102.800	6381.43	-769.18	769.39	52.35	40°12'11.196"N	104°46'45.946"W	1.81	
6543.00	0.890	100.570	6476.42	-768.81	769.03	54.07	40°12'11.193"N	104°46'45.924"W	0.37	
6638.00	0.700	82.770	6571.41	-768.74	768.97	55.38	40°12'11.192"N	104°46'45.907"W	0.33	
6700.00	0.340	50.210	6633.41	-768.91	769.13	55.89	40°12'11.194"N	104°46'45.901"W	0.73	
6732.00	0.440	66.210	6665.41	-769.02	769.24	56.08	40°12'11.195"N	104°46'45.898"W	0.46	
6763.00	1.030	161.810	6696.40	-768.80	769.03	56.27	40°12'11.192"N	104°46'45.896"W	3.74	
6795.00	4.260	176.060	6728.37	-767.34	767.57	56.45	40°12'11.178"N	104°46'45.894"W	10.22	
6827.00	8.230	180.700	6760.17	-763.86	764.09	56.50	40°12'11.144"N	104°46'45.893"W	12.50	
6858.00	12.120	181.860	6790.68	-758.39	758.62	56.37	40°12'11.090"N	104°46'45.895"W	12.57	
6890.00	15.940	182.310	6821.72	-750.64	750.87	56.08	40°12'11.013"N	104°46'45.898"W	11.94	
6921.00	19.770	182.860	6851.22	-741.15	741.37	55.65	40°12'10.919"N	104°46'45.904"W	12.37	
6953.00	23.080	186.050	6881.00	-729.51	729.73	54.72	40°12'10.804"N	104°46'45.916"W	10.96	
6985.00	26.140	183.150	6910.09	-716.23	716.45	53.67	40°12'10.673"N	104°46'45.929"W	10.28	
7016.00	29.320	181.290	6937.53	-701.82	702.04	53.12	40°12'10.531"N	104°46'45.936"W	10.63	
7048.00	32.570	177.790	6964.97	-685.38	685.59	53.28	40°12'10.368"N	104°46'45.934"W	11.61	
7080.00	36.380	174.650	6991.35	-667.31	667.53	54.49	40°12'10.189"N	104°46'45.919"W	13.13	
7111.00	39.530	172.870	7015.79	-648.35	648.58	56.58	40°12'10.002"N	104°46'45.892"W	10.76	
7143.00	41.940	173.390	7040.04	-627.61	627.85	59.07	40°12'09.797"N	104°46'45.860"W	7.61	
7174.00	43.390	174.630	7062.83	-606.71	606.95	61.26	40°12'09.591"N	104°46'45.831"W	5.41	
7206.00	44.610	175.650	7085.85	-584.55	584.81	63.14	40°12'09.372"N	104°46'45.807"W	4.41	
7238.00	48.080	176.030	7107.94	-561.46	561.72	64.82	40°12'09.144"N	104°46'45.786"W	10.88	



Actual Wellpath Report

BARCLAY 15N-28HZ_AWP

Page 4 of 7



REFERENCE WELLPATH IDENTIFICATION

Operator	KERR-MCGEE OIL & GAS ONSHORE LP	Slot	SLOT#28 BARCLAY 15N-28HZ (819'FNL & 1865'FEL, SEC.28)
Area	COLORADO	Well	BARCLAY 15N-28HZ
Field	WELD COUNTY (KERR MCGEE)	Wellbore	BARCLAY 15N-28HZ AWB
Facility	SEC.28-T3N-R66W		

WELLPATH DATA (150 stations) † = interpolated/extrapolated station

MD [ft]	Inclination [°]	Azimuth [°]	TVD [ft]	Vert Sect [ft]	North [ft]	East [ft]	Latitude	Longitude	DLS [°/100ft]	Comments
7269.00	52.300	176.440	7127.78	-537.70	537.96	66.38	40°12'08.909"N	104°46'45.766"W	13.65	
7301.00	56.040	178.160	7146.51	-511.78	512.05	67.59	40°12'08.653"N	104°46'45.750"W	12.47	
7333.00	58.310	179.470	7163.86	-484.90	485.17	68.14	40°12'08.387"N	104°46'45.743"W	7.88	
7364.00	60.460	180.760	7179.64	-458.22	458.49	68.09	40°12'08.124"N	104°46'45.744"W	7.81	
7396.00	61.160	181.030	7195.25	-430.29	430.56	67.65	40°12'07.848"N	104°46'45.749"W	2.31	
7427.00	61.430	180.960	7210.14	-403.11	403.37	67.18	40°12'07.579"N	104°46'45.755"W	0.89	
7459.00	63.870	180.380	7224.84	-374.69	374.96	66.85	40°12'07.298"N	104°46'45.759"W	7.79	
7491.00	67.610	181.440	7237.99	-345.53	345.79	66.38	40°12'07.010"N	104°46'45.766"W	12.07	
7522.00	70.870	181.960	7248.97	-316.56	316.82	65.52	40°12'06.724"N	104°46'45.777"W	10.63	
7554.00	74.290	182.180	7258.55	-286.06	286.31	64.42	40°12'06.422"N	104°46'45.791"W	10.71	
7586.00	77.190	181.940	7266.43	-255.07	255.32	63.30	40°12'06.116"N	104°46'45.805"W	9.09	
7617.00	78.770	180.590	7272.89	-224.76	225.01	62.63	40°12'05.817"N	104°46'45.814"W	6.64	
7649.00	80.930	179.970	7278.53	-193.27	193.51	62.48	40°12'05.505"N	104°46'45.816"W	7.01	
7682.00	84.420	179.620	7282.73	-160.54	160.79	62.60	40°12'05.182"N	104°46'45.814"W	10.63	
7722.00†	86.807	178.270	7285.79	-120.67	120.92	63.33	40°12'04.788"N	104°46'45.805"W	6.85	7" Casing Point
7747.00	88.300	177.430	7286.86	-95.71	95.96	64.27	40°12'04.541"N	104°46'45.793"W	6.85	
7811.00	87.900	178.250	7288.98	-31.78	32.04	66.68	40°12'03.910"N	104°46'45.762"W	1.42	
7905.00	87.590	178.910	7292.68	62.13	-61.86	69.01	40°12'02.982"N	104°46'45.732"W	0.78	
8000.00	90.240	180.210	7294.48	157.10	-156.83	69.74	40°12'02.043"N	104°46'45.722"W	3.11	
8095.00	89.780	180.080	7294.46	252.10	-251.83	69.50	40°12'01.104"N	104°46'45.725"W	0.50	
8190.00	90.860	180.770	7293.93	347.09	-346.82	68.79	40°12'00.166"N	104°46'45.734"W	1.35	
8285.00	89.010	180.340	7294.04	442.07	-441.81	67.87	40°11'59.227"N	104°46'45.746"W	2.00	
8380.00	89.290	180.600	7295.45	537.06	-536.80	67.09	40°11'58.288"N	104°46'45.756"W	0.40	
8475.00	88.760	180.810	7297.07	632.03	-631.78	65.92	40°11'57.350"N	104°46'45.771"W	0.60	
8569.00	89.260	180.440	7298.69	726.01	-725.76	64.90	40°11'56.421"N	104°46'45.785"W	0.66	
8664.00	88.390	181.120	7300.64	820.97	-820.73	63.61	40°11'55.483"N	104°46'45.801"W	1.16	
8759.00	88.790	180.430	7302.98	915.93	-915.69	62.32	40°11'54.544"N	104°46'45.818"W	0.84	
8854.00	89.590	179.580	7304.32	1010.91	-1010.68	62.31	40°11'53.606"N	104°46'45.818"W	1.23	
8948.00	90.610	178.040	7304.16	1104.90	-1104.65	64.27	40°11'52.677"N	104°46'45.793"W	1.97	
9043.00	89.500	177.580	7304.06	1199.84	-1199.58	67.90	40°11'51.739"N	104°46'45.746"W	1.26	
9138.00	91.530	178.670	7303.21	1294.79	-1294.52	71.00	40°11'50.801"N	104°46'45.706"W	2.43	
9233.00	90.550	177.760	7301.49	1389.74	-1389.46	73.96	40°11'49.862"N	104°46'45.668"W	1.41	
9328.00	90.120	177.340	7300.93	1484.66	-1484.37	78.02	40°11'48.925"N	104°46'45.616"W	0.63	
9423.00	89.840	178.120	7300.96	1579.60	-1579.29	81.79	40°11'47.986"N	104°46'45.567"W	0.87	
9518.00	91.130	180.090	7300.16	1674.58	-1674.27	83.27	40°11'47.048"N	104°46'45.548"W	2.48	
9613.00	90.150	179.960	7299.10	1769.58	-1769.26	83.23	40°11'46.109"N	104°46'45.548"W	1.04	
9707.00	88.920	179.280	7299.86	1863.57	-1863.26	83.85	40°11'45.180"N	104°46'45.540"W	1.50	
9802.00	90.360	180.870	7300.46	1958.56	-1958.25	83.73	40°11'44.242"N	104°46'45.542"W	2.26	
9897.00	89.630	180.840	7300.47	2053.54	-2053.24	82.31	40°11'43.303"N	104°46'45.560"W	0.77	
9992.00	91.040	182.130	7299.91	2148.50	-2148.20	79.85	40°11'42.365"N	104°46'45.592"W	2.01	
10087.00	90.030	181.640	7299.02	2243.43	-2243.14	76.72	40°11'41.426"N	104°46'45.632"W	1.18	
10182.00	89.440	181.680	7299.46	2338.37	-2338.10	73.97	40°11'40.488"N	104°46'45.668"W	0.62	
10277.00	89.930	182.010	7299.99	2433.31	-2433.05	70.91	40°11'39.550"N	104°46'45.707"W	0.62	
10371.00	91.170	182.080	7299.08	2527.23	-2526.98	67.56	40°11'38.621"N	104°46'45.750"W	1.32	
10466.00	90.400	182.330	7297.78	2622.13	-2621.90	63.90	40°11'37.683"N	104°46'45.798"W	0.85	



Actual Wellpath Report

BARCLAY 15N-28HZ_AWP

Page 5 of 7



REFERENCE WELLPATH IDENTIFICATION			
Operator	KERR-MCGEE OIL & GAS ONSHORE LP	Slot	SLOT#28 BARCLAY 15N-28HZ (819'FNL & 1865'FEL, SEC.28)
Area	COLORADO	Well	BARCLAY 15N-28HZ
Field	WELD COUNTY (KERR MCGEE)	Wellbore	BARCLAY 15N-28HZ AWB
Facility	SEC.28-T3N-R66W		

WELLPATH DATA (150 stations)										
MD [ft]	Inclination [°]	Azimuth [°]	TVD [ft]	Vert Sect [ft]	North [ft]	East [ft]	Latitude	Longitude	DLS [°/100ft]	Comments
10561.00	89.070	182.590	7298.22	2717.03	-2716.81	59.83	40°11'36.745"N	104°46'45.850"W	1.43	
10656.00	90.640	182.610	7298.46	2811.91	-2811.71	55.52	40°11'35.808"N	104°46'45.906"W	1.65	
10751.00	90.490	182.630	7297.53	2906.79	-2906.61	51.17	40°11'34.870"N	104°46'45.962"W	0.16	
10846.00	90.210	182.680	7296.94	3001.66	-3001.50	46.77	40°11'33.932"N	104°46'46.018"W	0.30	
10941.00	89.810	182.990	7296.93	3096.53	-3096.39	42.08	40°11'32.995"N	104°46'46.079"W	0.53	
11036.00	89.660	182.950	7297.37	3191.38	-3191.26	37.15	40°11'32.057"N	104°46'46.142"W	0.16	
11130.00	89.410	181.560	7298.13	3285.29	-3285.18	33.46	40°11'31.129"N	104°46'46.190"W	1.50	
11225.00	89.380	179.830	7299.13	3380.27	-3380.17	32.30	40°11'30.190"N	104°46'46.205"W	1.82	
11320.00	88.730	180.220	7300.70	3475.25	-3475.15	32.26	40°11'29.252"N	104°46'46.205"W	0.80	
11415.00	88.980	181.590	7302.60	3570.21	-3570.12	30.76	40°11'28.313"N	104°46'46.225"W	1.47	
11510.00	88.920	181.200	7304.34	3665.16	-3665.07	28.45	40°11'27.375"N	104°46'46.254"W	0.42	
11605.00	88.030	181.720	7306.87	3760.08	-3760.01	26.03	40°11'26.437"N	104°46'46.286"W	1.08	
11700.00	87.250	183.130	7310.78	3854.90	-3854.84	22.01	40°11'25.500"N	104°46'46.337"W	1.70	
11768.00	86.510	182.790	7314.48	3922.69	-3922.65	18.51	40°11'24.829"N	104°46'46.383"W	1.20	Last BHI MWD+IFR Surveys
11828.00	86.510	182.790	7318.13	3982.50	-3982.47	15.59	40°11'24.238"N	104°46'46.420"W	0.00	Projection to Bit

HOLE & CASING SECTIONS - Ref Wellbore: BARCLAY 15N-28HZ AWB Ref Wellpath: BARCLAY 15N-28HZ_AWP									
String/Diameter	Start MD [ft]	End MD [ft]	Interval [ft]	Start TVD [ft]	End TVD [ft]	Start N/S [ft]	Start E/W [ft]	End N/S [ft]	End E/W [ft]
13.5in Open Hole	13.00	729.00	716.00	13.00	728.98	0.00	0.00	2.89	1.83
9.625in Casing Surface	13.00	729.00	716.00	13.00	728.98	0.00	0.00	2.89	1.83
8.75in Open Hole	729.00	7735.00	7006.00	728.98	7286.43	2.89	1.83	107.94	63.77
7in Casing Intermediate	13.00	7722.00	7709.00	13.00	7285.79	0.00	0.00	120.92	63.33
6.125in Open Hole	7722.00	11828.00	4106.00	7285.79	7318.13	120.92	63.33	-3982.47	15.59



Actual Wellpath Report

BARCLAY 15N-28HZ_AWP

Page 6 of 7



REFERENCE WELLPATH IDENTIFICATION			
Operator	KERR-MCGEE OIL & GAS ONSHORE LP	Slot	SLOT#28 BARCLAY 15N-28HZ (819'FNL & 1865'FEL, SEC.28)
Area	COLORADO	Well	BARCLAY 15N-28HZ
Field	WELD COUNTY (KERR MCGEE)	Wellbore	BARCLAY 15N-28HZ AWB
Facility	SEC.28-T3N-R66W		

TARGETS									
Name	MD [ft]	TVD [ft]	North [ft]	East [ft]	Grid East [US ft]	Grid North [US ft]	Latitude	Longitude	Shape
SECTION 28 LINES		31.70	-4277.41	-2951.74	3198304.10	1312582.33	40°11'21.322"N	104°47'24.655"W	polygon
BARCLAY 15N-28HZ BHL ON PLAT (460' FSL & 1930' FEL, SEC.28) REV-1		7189.00	-4007.70	-34.92	3201218.50	1312875.72	40°11'23.989"N	104°46'47.071"W	point
BARCLAY 15N-28HZ BHL (460' FSL & 1855' FEL, SEC.28) REV-3		7288.00	-4007.70	40.08	3201293.50	1312876.32	40°11'23.989"N	104°46'46.105"W	point
BARCLAY 15N-28HZ LAND BOX		7300.00	0.00	0.00	3201220.86	1316883.39	40°12'03.593"N	104°46'46.621"W	polygon
BARCLAY 15N-28HZ BHL (460' FSL & 1855' FEL, SEC.28) REV-2		7308.00	-4007.70	40.08	3201293.50	1312876.32	40°11'23.989"N	104°46'46.105"W	point
SEC 28 HARDLINES (460' SETBACKS)		7332.00	-4277.41	-2951.74	3198304.10	1312582.33	40°11'21.322"N	104°47'24.655"W	polygon

WELLPATH COMPOSITION - Ref Wellbore: BARCLAY 15N-28HZ AWB Ref Wellpath: BARCLAY 15N-28HZ_AWP				
Start MD [ft]	End MD [ft]	Positional Uncertainty Model	Log Name/Comment	Wellbore
13.00	688.00	Generic gyro - continuous (Standard)	GYRODATA SURVEYS <113 - 688>	BARCLAY 15N-28HZ AWB
688.00	7682.00	NaviTrak (MAGCORR,IFR)	BHI MWD+IFR SURVEYS 8 3/4" HOLE <790-7682>	BARCLAY 15N-28HZ AWB
7682.00	11768.00	OnTrak (MAGCORR,IFR)	BHI MWD+IFR SURVEYS 6 1/8" HOLE <7747-11768>	BARCLAY 15N-28HZ AWB
11768.00	11828.00	Blind Drilling (std)	Projection to bit	BARCLAY 15N-28HZ AWB



Actual Wellpath Report

BARCLAY 15N-28HZ_AWP

Page 7 of 7



REFERENCE WELLPATH IDENTIFICATION

Operator	KERR-MCGEE OIL & GAS ONSHORE LP	Slot	SLOT#28 BARCLAY 15N-28HZ (819'FNL & 1865'FEL, SEC.28)
Area	COLORADO	Well	BARCLAY 15N-28HZ
Field	WELD COUNTY (KERR MCGEE)	Wellbore	BARCLAY 15N-28HZ AWB
Facility	SEC.28-T3N-R66W		

WELLPATH COMMENTS

MD [ft]	Inclination [°]	Azimuth [°]	TVD [ft]	Comment
13.00	0.000	329.890	13.00	Tie-On
113.00	0.290	329.890	113.00	Begin GYRO Surveys
688.00	0.060	173.490	687.98	Tie-Into GYRO Surveys
790.00	0.120	293.630	789.98	Begin BHI MWD+IFR Surveys
7722.00	86.807	178.270	7285.79	7" Casing Point
11768.00	86.510	182.790	7314.48	Last BHI MWD+IFR Surveys
11828.00	86.510	182.790	7318.13	Projection to Bit