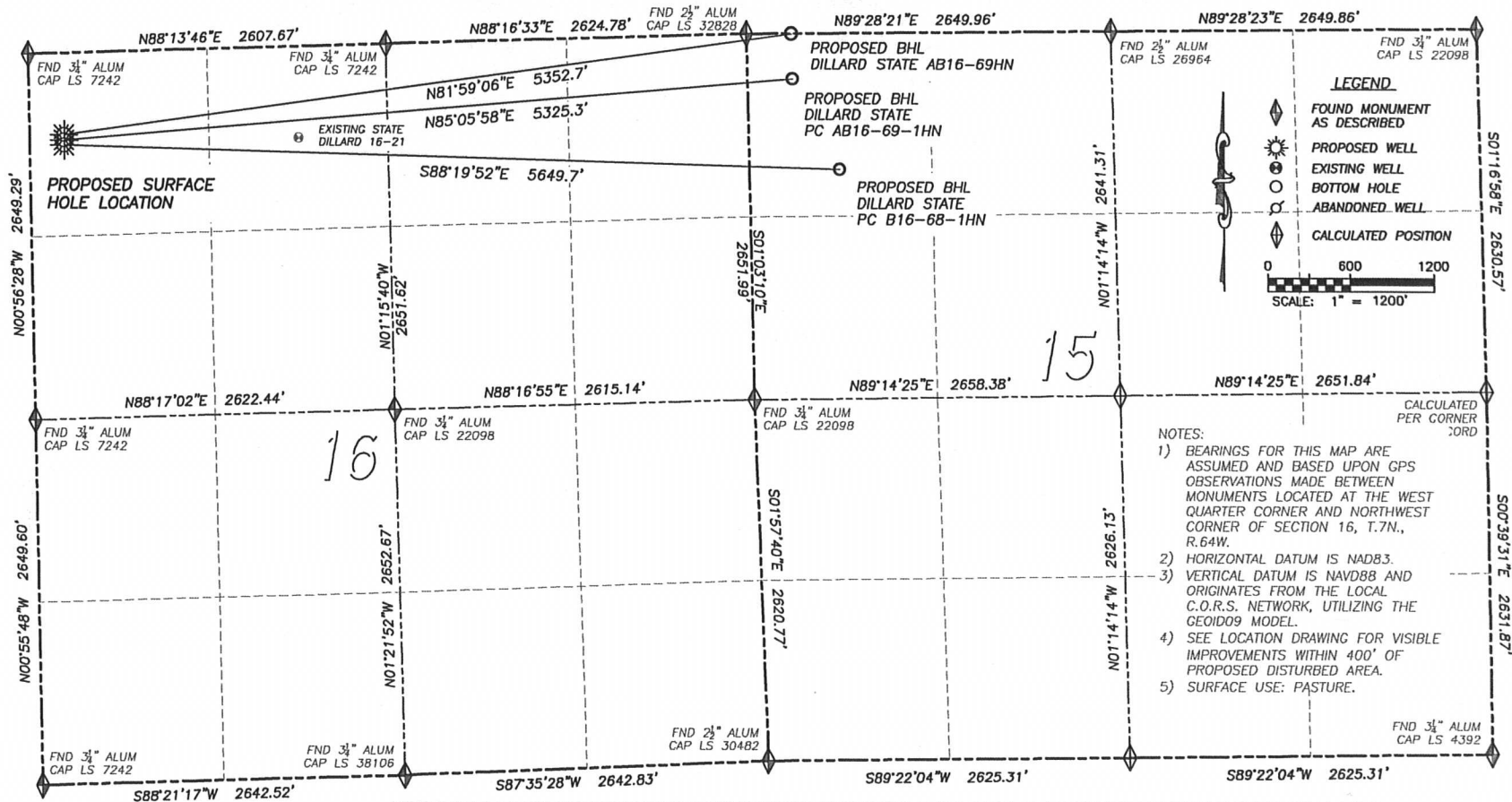


DALEY LAND SURVEYING, INC. PARKER, CO. 80134 303 953 9841
MULTI-WELL PAD DIRECTIONAL LAYOUT
DILLARD STATE AB16-69HN, DILLARD STATE PC AB16-69-1HN &
DILLARD STATE PC AB16-68-1HN
 SECTION 16, TOWNSHIP 7 NORTH, RANGE 64 WEST OF THE 6TH PRINCIPAL MERIDIAN



Well Name		Qtr - Qtr	Footage		Latitude	Longitude	Elevation
DILLARD STATE AB16-69HN	SHL	NW NW 16	592' FNL	250' FWL	40.57856	-104.56314	4927
	BHL	NW NW 15	1' FNL	330' FWL	40.58046	-104.54403	
DILLARD STATE PC AB16-69-1HN	SHL	NW NW 16	630' FNL	250' FWL	40.57846	-104.56314	4928
	BHL	NW NW 15	330' FNL	330' FWL	40.57955	-104.54402	
DILLARD STATE PC AB16-68-1HN	SHL	NW NW 16	667' FNL	250' FWL	40.57836	-104.56314	4929
	BHL	NW NW 15	990' FNL	660' FWL	40.57774	-104.54282	

NOTICE: According to Colorado law you MUST commence any legal action based upon any defect in this W.L.C. within three years after you first discover such defect. In no event may any action based upon any such defect in this W.L.C. be commenced more than ten years from the date of the certification shown hereon.

DALEY LAND SURVEYING, INC. PARKER, CO. 80134 303 953 9841

MULTI WELL PAD LOCATION DRAWING
DILLARD STATE AB16-69HN, DILLARD STATE PC AB16-69-1HN
& DILLARD STATE PC AB16-68-1HN

SECTION 16, TOWNSHIP 7 NORTH, RANGE 64 WEST OF THE 6TH PRINCIPAL MERIDIAN



WELL ORDER NORTH TO SOUTH
DILLARD STATE AB16-69HN
DILLARD STATE PC AB16-69-1HN
DILLARD STATE PC AB16-68-1HN

