

PEAKVIEW OPERATING COMPANY, LLC

LOCATION DRAWING ADDENDUM TO LEGAL PLATS

KOWACH #24-9 SWD

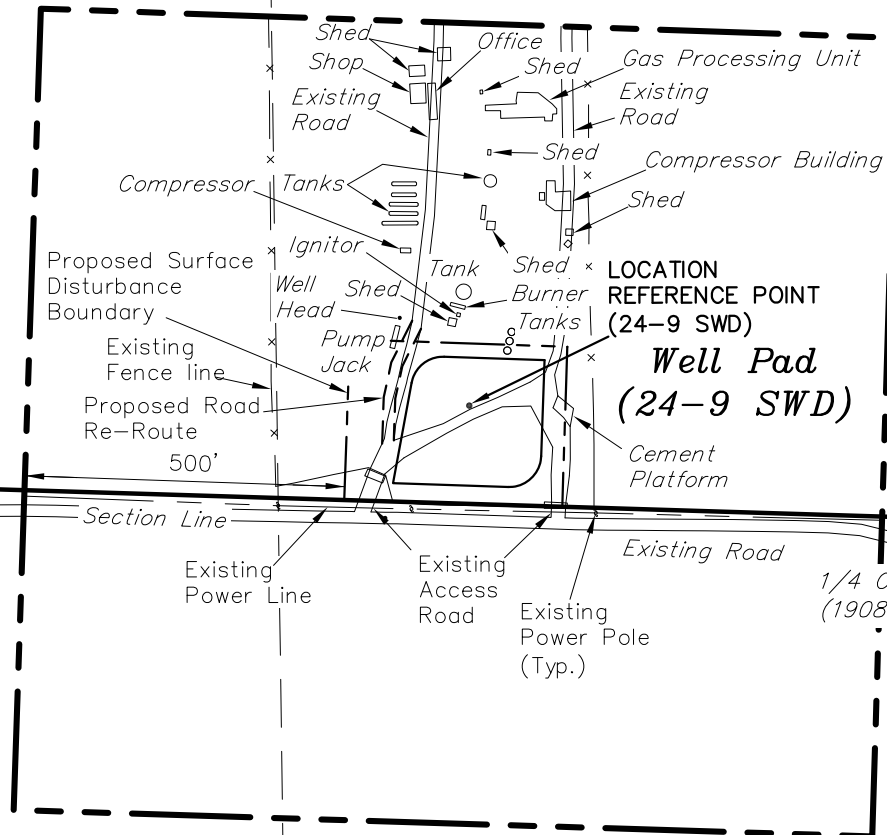
Section 9, T6N, R90W, 6th P.M.

Sec 9



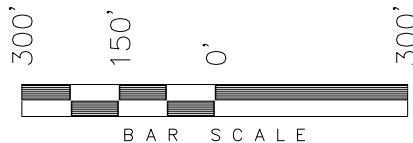
SW 1/4
SW 1/4

SE 1/4
SW 1/4



NW 1/4
NW 1/4

NE 1/4
NW 1/4



SURFACE USE NOTE:

Surface use of the well site is grazing.
Vegetation consists mainly of Pine Trees,
Cedar Trees & Sagebrush & Native Grasses.

Feature	Distance from Well Head
Building	1,950 Feet
Above Ground Utility	163 Feet
Public Road	170 Feet
Railroad	1.73 Miles

Sec 16

SURVEYED BY: K.G.S. DATE SURVEYED: 03-21-13
DRAWN BY: M.W. DATE DRAWN: 03-28-13
SCALE: 1" = 300' REVISED: M.W. 04-04-13

Tri State
Land Surveying, Inc.
(435) 781-2501
180 NORTH VERNAL AVE. VERNAL, UTAH 84078

SHEET
2