



Lat40°, Inc. 1635 Foxtrail Drive, Suite 325 Loveland, CO 970-776-3321

# LOCATION DRAWING

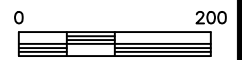
STATE SEVENTY HOLES K-3 PAD

SECTION: 3  
TOWNSHIP: 4N  
RANGE: 62W



IMPROVEMENTS:  
(MEASURED FROM PROPOSED STATE SEVENTY HOLES K-O-3HNB WELL LOCATION)

 FENCE 275' W, 406' N



NEAREST: BUILDING 5280'+, PUBLIC ROAD 5280'+,  
ABOVE GROUND UTILITY 5280'+, RAILROAD 5280'+, PROPERTY LINE 275' W

1"=200'  
DATE: 3/22/2013  
PROJECT#: 2012074