

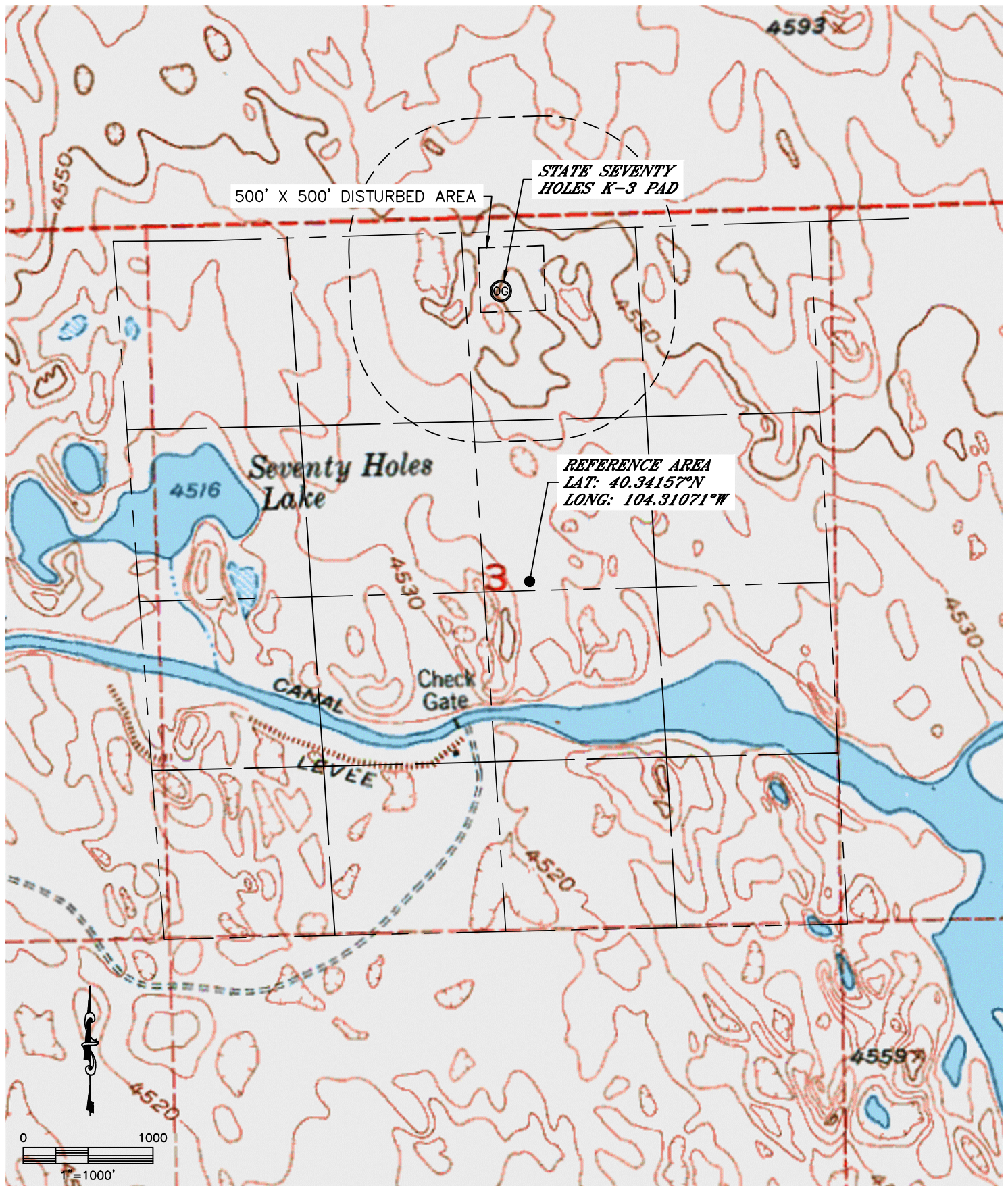


Lat40°, Inc. 1635 Foxtrail Drive, Suite 325 Loveland, CO 970-776-3321

REFERENCE AREA MAP

STATE SEVENTY HOLES K-3 PAD

SECTION: 3
TOWNSHIP: 4N
RANGE: 62W



DATE: 3/22/2013
PROJECT#: 2012074