

# Synergy Resources

## Well Name: SRC Union 5AHZN

Surface Location: SRC Union Pad Sec.5-T2N-R68W  
North American Datum 1983 , US State Plane 1983 , Colorado Northern Zone

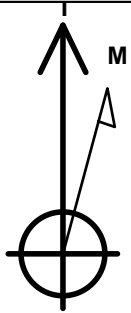
Ground Elevation: 4965.0

+N/-S	+E/-W	Northing	Easting	Latitude	Longitude	Slot
0.0	0.0	1305228.10	3130037.99	40.170310	-105.034669	

RKB - 13' WELL @ 4978.0ft (RKB - 13')

## WELLBORE TARGET DETAILS

Name	TVD	+N/-S	+E/-W	Shape
HARDLINES BHL 460'FEL	1.0	-1000.0	4372.2	Polygon
HARDLINES SHL 460'FWL	1.0	-1000.0	-39.0	Polygon
BHL 1601'FNL, 460'FEL	7000.0	56.5	4372.2	Point
Landing pt 1556' FNL & 510'FWL	7000.0	70.7	11.0	Point



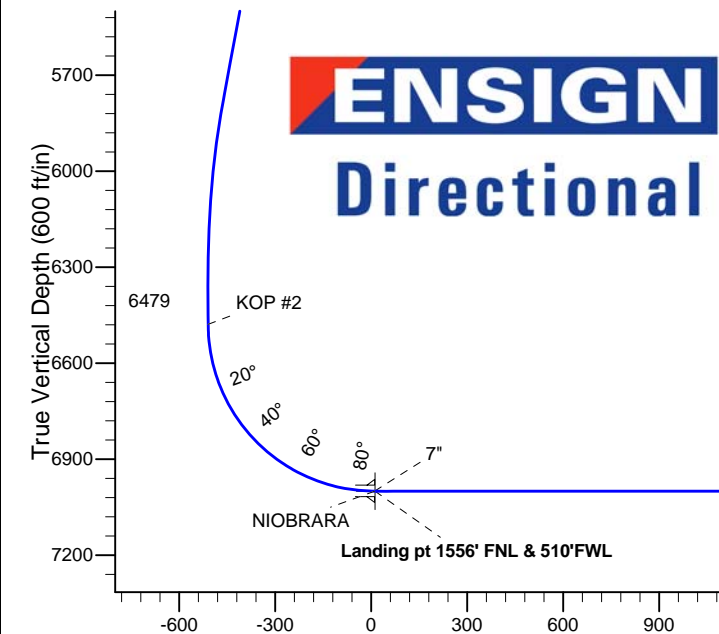
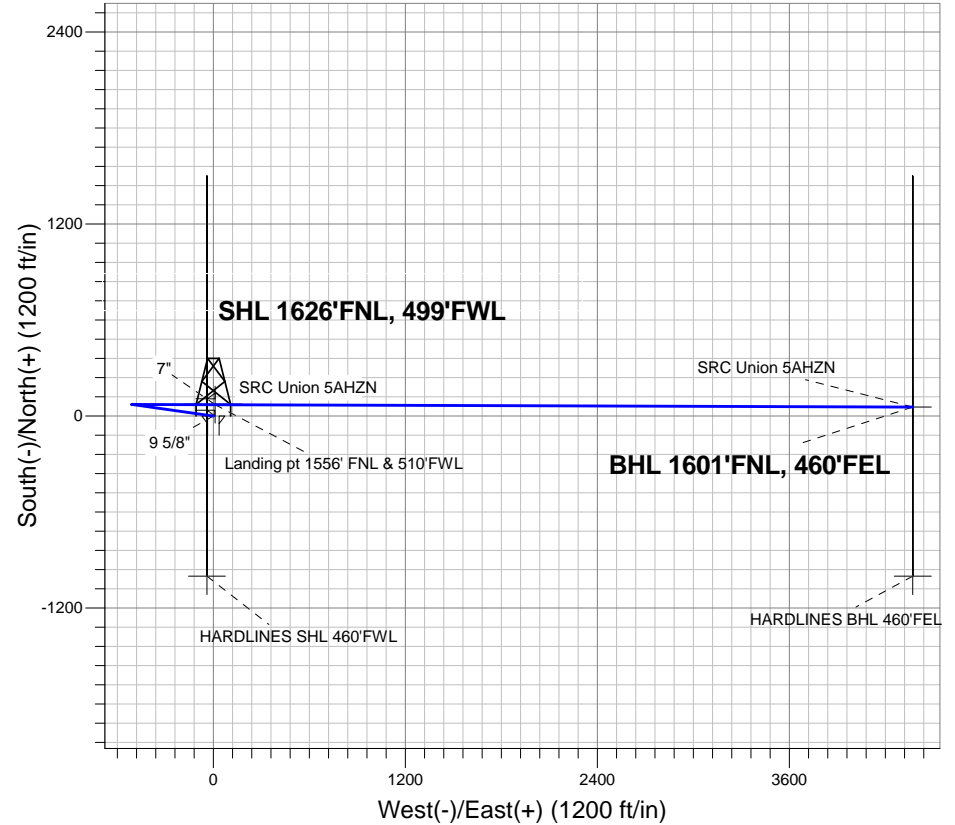
Azimuths to True North  
Magnetic North: 8.74°

Magnetic Field  
Strength: 52789.4nT  
Dip Angle: 66.76°  
Date: 4/8/2013  
Model: IGRF2010

## ANNOTATIONS

TVD	MD	Annotation
3000.0	3000.0	KOP #1
6479.1	6523.6	KOP #2

SRC Union Pad Sec.5-T2N-R68W  
SRC Union 5AHZN  
Plan #2 (4-08-13)



## SECTION DETAILS

Sec	MD	Inc	Azi	TVD	+N/-S	+E/-W	DLeg	TFace	VSec	Target
1	0.0	0.00	0.00	0.0	0.0	0.0	0.00	0.00	0.0	
2	3000.0	0.00	0.00	3000.0	0.0	0.0	0.00	0.00	0.0	
3	3526.4	10.53	278.15	3523.5	6.8	-47.7	2.00	278.15	-47.7	
4	5818.1	10.53	278.15	5776.5	66.2	-462.3	0.00	0.00	-461.4	
5	6344.5	0.00	0.00	6300.0	73.0	-510.0	2.00	180.00	-509.0	
6	6523.6	0.00	0.00	6479.1	73.0	-510.0	0.00	0.00	-509.0	
7	7341.8	90.00	90.25	7000.0	70.7	10.9	11.00	90.25	11.8	
8	7341.9	90.00	90.25	7000.0	70.7	11.0	0.00	0.00	11.9	Landing pt 1556' FNL & 510'FWL
9	7348.7	90.00	90.19	7000.0	70.7	17.7	1.00	-90.00	18.7	
10	11703.2	90.00	90.19	7000.0	56.5	4372.2	0.00	0.00	4372.6	BHL 1601'FNL, 460'FEL

BHL 1601'FNL, 460'FEL

Vertical Section at 89.26° (600 ft/in)

# Synergy Resources

## Well Name: SRC Union 5AHZN

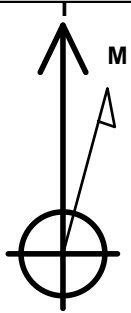
Surface Location: SRC Union Pad Sec.5-T2N-R68W  
North American Datum 1983 , US State Plane 1983 , Colorado Northern Zone

Ground Elevation: 4965.0

+N/-S	+E/-W	Northing	Easting	Latitude	Longitude	Slot
0.0	0.0	1305228.10	3130037.99	40.170310	-105.034669	
RKB - 13' WELL @ 4978.0ft (RKB - 13')						

## WELLBORE TARGET DETAILS

Name	TVD	+N/-S	+E/-W	Shape
HARDLINES BHL 460'FEL	1.0	-1000.0	4372.2	Polygon
HARDLINES SHL 460'FWL	1.0	-1000.0	-39.0	Polygon
BHL 1601'FNL, 460'FEL	7000.0	56.5	4372.2	Point
Landing pt 1556' FNL & 510'FWL	7000.0	70.7	11.0	Point



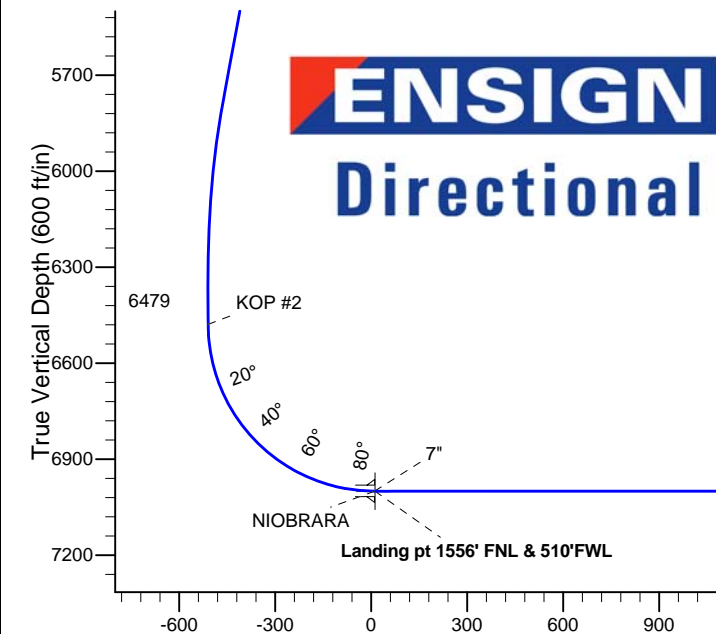
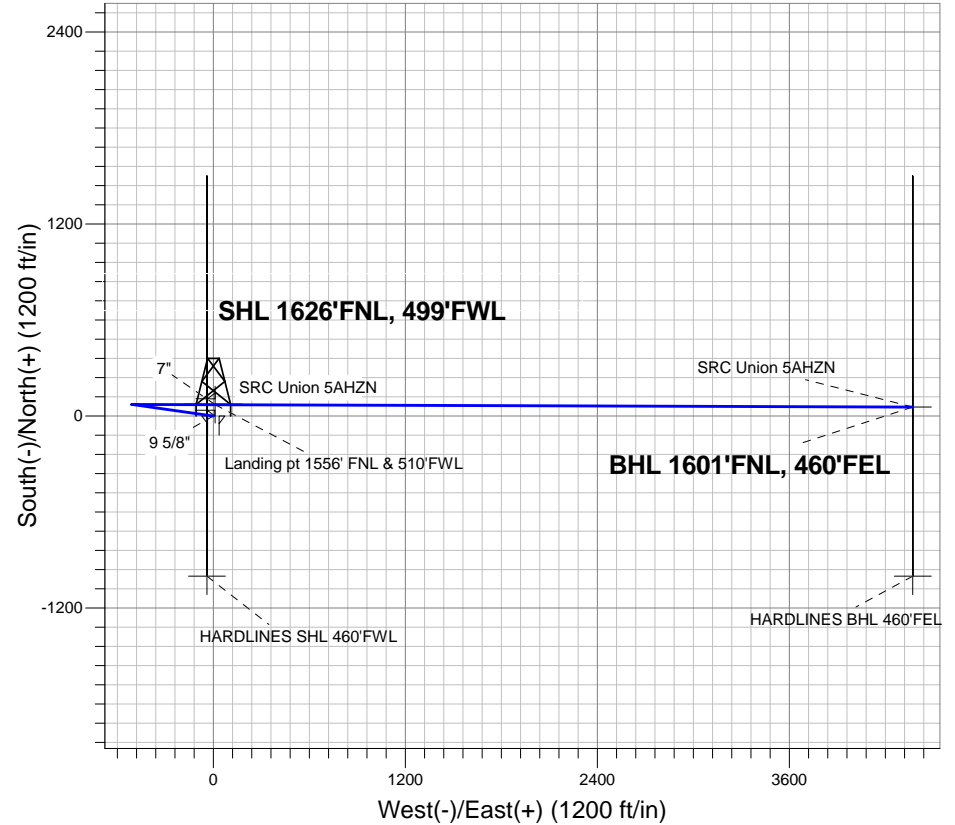
Azimuths to True North  
Magnetic North: 8.74°

Magnetic Field  
Strength: 52789.4nT  
Dip Angle: 66.76°  
Date: 4/8/2013  
Model: IGRF2010

## ANNOTATIONS

TVD	MD	Annotation
3000.0	3000.0	KOP #1
6479.1	6523.6	KOP #2

SRC Union Pad Sec.5-T2N-R68W  
SRC Union 5AHZN  
Plan #2 (4-08-13)



## SECTION DETAILS

Sec	MD	Inc	Azi	TVD	+N/-S	+E/-W	DLeg	TFace	VSec	Target
1	0.0	0.00	0.00	0.0	0.0	0.0	0.00	0.00	0.0	
2	3000.0	0.00	0.00	3000.0	0.0	0.0	0.00	0.00	0.0	
3	3526.4	10.53	278.15	3523.5	6.8	-47.7	2.00	278.15	-47.7	
4	5818.1	10.53	278.15	5776.5	66.2	-462.3	0.00	0.00	-461.4	
5	6344.5	0.00	0.00	6300.0	73.0	-510.0	2.00	180.00	-509.0	
6	6523.6	0.00	0.00	6479.1	73.0	-510.0	0.00	0.00	-509.0	
7	7341.8	90.00	90.25	7000.0	70.7	10.9	11.00	90.25	11.8	
8	7341.9	90.00	90.25	7000.0	70.7	11.0	0.00	0.00	11.9	Landing pt 1556' FNL & 510'FWL
9	7348.7	90.00	90.19	7000.0	70.7	17.7	1.00	-90.00	18.7	
10	11703.2	90.00	90.19	7000.0	56.5	4372.2	0.00	0.00	4372.6	BHL 1601'FNL, 460'FEL

BHL 1601'FNL, 460'FEL

Vertical Section at 89.26° (600 ft/in)



## **Directional**

### **Synergy Resources**

**SEC.5-T2N-R68W**

**SRC Union Pad Sec.5-T2N-R68W**

**SRC Union 5AHZN**

**Wellbore #1**

**Plan: Plan #2 (4-08-13)**

### **Standard Planning Report**

**08 April, 2013**

Plan Sections										
Measured Depth (ft)	Inclination (°)	Azimuth (°)	Vertical Depth (ft)	+N/-S (ft)	+E/-W (ft)	Dogleg Rate (°/100ft)	Build Rate (°/100ft)	Turn Rate (°/100ft)	TFO (°)	Target
0.0	0.00	0.00	0.0	0.0	0.0	0.00	0.00	0.00	0.00	
3,000.0	0.00	0.00	3,000.0	0.0	0.0	0.00	0.00	0.00	0.00	
3,526.4	10.53	278.15	3,523.5	6.8	-47.7	2.00	2.00	0.00	278.15	
5,818.1	10.53	278.15	5,776.5	66.2	-462.3	0.00	0.00	0.00	0.00	
6,344.5	0.00	0.00	6,300.0	73.0	-510.0	2.00	-2.00	0.00	180.00	
6,523.6	0.00	0.00	6,479.1	73.0	-510.0	0.00	0.00	0.00	0.00	
7,341.8	90.00	90.25	7,000.0	70.7	10.9	11.00	11.00	0.00	90.25	
7,341.9	90.00	90.25	7,000.0	70.7	11.0	0.00	0.00	0.00	0.00	Landing pt 1556' FNL
7,348.7	90.00	90.19	7,000.0	70.7	17.7	1.00	0.00	-1.00	-90.00	
11,703.2	90.00	90.19	7,000.0	56.5	4,372.2	0.00	0.00	0.00	0.00	BHL 1601'FNL, 460' FTL

<b>Database:</b>	Landmark	<b>Local Co-ordinate Reference:</b>	Well SRC Union 5AHZN
<b>Company:</b>	Synergy Resources	<b>TVD Reference:</b>	WELL @ 4978.0ft (RKB - 13')
<b>Project:</b>	SEC.5-T2N-R68W	<b>MD Reference:</b>	WELL @ 4978.0ft (RKB - 13')
<b>Site:</b>	SRC Union Pad Sec.5-T2N-R68W	<b>North Reference:</b>	True
<b>Well:</b>	SRC Union 5AHZN	<b>Survey Calculation Method:</b>	Minimum Curvature
<b>Wellbore:</b>	Wellbore #1		
<b>Design:</b>	Plan #2 (4-08-13)		

#### Planned Survey

Measured Depth (ft)	Inclination (°)	Azimuth (°)	Vertical Depth (ft)	+N/-S (ft)	+E/-W (ft)	Vertical Section (ft)	Dogleg Rate (°/100ft)	Build Rate (°/100ft)	Turn Rate (°/100ft)
0.0	0.00	0.00	0.0	0.0	0.0	0.0	0.00	0.00	0.00
1.0	0.00	0.00	1.0	0.0	0.0	0.0	0.00	0.00	0.00
<b>HARDLINES BHL 460'FEL - HARDLINES SHL 460'FWL</b>									
40.0	0.00	0.00	40.0	0.0	0.0	0.0	0.00	0.00	0.00
80.0	0.00	0.00	80.0	0.0	0.0	0.0	0.00	0.00	0.00
120.0	0.00	0.00	120.0	0.0	0.0	0.0	0.00	0.00	0.00
160.0	0.00	0.00	160.0	0.0	0.0	0.0	0.00	0.00	0.00
200.0	0.00	0.00	200.0	0.0	0.0	0.0	0.00	0.00	0.00
240.0	0.00	0.00	240.0	0.0	0.0	0.0	0.00	0.00	0.00
280.0	0.00	0.00	280.0	0.0	0.0	0.0	0.00	0.00	0.00
320.0	0.00	0.00	320.0	0.0	0.0	0.0	0.00	0.00	0.00
360.0	0.00	0.00	360.0	0.0	0.0	0.0	0.00	0.00	0.00
400.0	0.00	0.00	400.0	0.0	0.0	0.0	0.00	0.00	0.00
440.0	0.00	0.00	440.0	0.0	0.0	0.0	0.00	0.00	0.00
480.0	0.00	0.00	480.0	0.0	0.0	0.0	0.00	0.00	0.00
520.0	0.00	0.00	520.0	0.0	0.0	0.0	0.00	0.00	0.00
560.0	0.00	0.00	560.0	0.0	0.0	0.0	0.00	0.00	0.00
600.0	0.00	0.00	600.0	0.0	0.0	0.0	0.00	0.00	0.00
640.0	0.00	0.00	640.0	0.0	0.0	0.0	0.00	0.00	0.00
680.0	0.00	0.00	680.0	0.0	0.0	0.0	0.00	0.00	0.00
720.0	0.00	0.00	720.0	0.0	0.0	0.0	0.00	0.00	0.00
760.0	0.00	0.00	760.0	0.0	0.0	0.0	0.00	0.00	0.00
800.0	0.00	0.00	800.0	0.0	0.0	0.0	0.00	0.00	0.00
<b>9 5/8"</b>									
840.0	0.00	0.00	840.0	0.0	0.0	0.0	0.00	0.00	0.00
880.0	0.00	0.00	880.0	0.0	0.0	0.0	0.00	0.00	0.00
920.0	0.00	0.00	920.0	0.0	0.0	0.0	0.00	0.00	0.00
960.0	0.00	0.00	960.0	0.0	0.0	0.0	0.00	0.00	0.00
1,000.0	0.00	0.00	1,000.0	0.0	0.0	0.0	0.00	0.00	0.00
1,040.0	0.00	0.00	1,040.0	0.0	0.0	0.0	0.00	0.00	0.00
1,080.0	0.00	0.00	1,080.0	0.0	0.0	0.0	0.00	0.00	0.00
1,120.0	0.00	0.00	1,120.0	0.0	0.0	0.0	0.00	0.00	0.00
1,160.0	0.00	0.00	1,160.0	0.0	0.0	0.0	0.00	0.00	0.00
1,200.0	0.00	0.00	1,200.0	0.0	0.0	0.0	0.00	0.00	0.00
1,240.0	0.00	0.00	1,240.0	0.0	0.0	0.0	0.00	0.00	0.00
1,280.0	0.00	0.00	1,280.0	0.0	0.0	0.0	0.00	0.00	0.00
1,320.0	0.00	0.00	1,320.0	0.0	0.0	0.0	0.00	0.00	0.00
1,360.0	0.00	0.00	1,360.0	0.0	0.0	0.0	0.00	0.00	0.00
1,400.0	0.00	0.00	1,400.0	0.0	0.0	0.0	0.00	0.00	0.00
1,440.0	0.00	0.00	1,440.0	0.0	0.0	0.0	0.00	0.00	0.00
1,480.0	0.00	0.00	1,480.0	0.0	0.0	0.0	0.00	0.00	0.00
1,520.0	0.00	0.00	1,520.0	0.0	0.0	0.0	0.00	0.00	0.00
1,560.0	0.00	0.00	1,560.0	0.0	0.0	0.0	0.00	0.00	0.00
1,600.0	0.00	0.00	1,600.0	0.0	0.0	0.0	0.00	0.00	0.00
1,640.0	0.00	0.00	1,640.0	0.0	0.0	0.0	0.00	0.00	0.00
1,680.0	0.00	0.00	1,680.0	0.0	0.0	0.0	0.00	0.00	0.00
1,720.0	0.00	0.00	1,720.0	0.0	0.0	0.0	0.00	0.00	0.00
1,760.0	0.00	0.00	1,760.0	0.0	0.0	0.0	0.00	0.00	0.00
1,800.0	0.00	0.00	1,800.0	0.0	0.0	0.0	0.00	0.00	0.00
1,840.0	0.00	0.00	1,840.0	0.0	0.0	0.0	0.00	0.00	0.00
1,880.0	0.00	0.00	1,880.0	0.0	0.0	0.0	0.00	0.00	0.00
1,920.0	0.00	0.00	1,920.0	0.0	0.0	0.0	0.00	0.00	0.00
1,960.0	0.00	0.00	1,960.0	0.0	0.0	0.0	0.00	0.00	0.00
2,000.0	0.00	0.00	2,000.0	0.0	0.0	0.0	0.00	0.00	0.00

<b>Database:</b>	Landmark	<b>Local Co-ordinate Reference:</b>	Well SRC Union 5AHZN
<b>Company:</b>	Synergy Resources	<b>TVD Reference:</b>	WELL @ 4978.0ft (RKB - 13')
<b>Project:</b>	SEC.5-T2N-R68W	<b>MD Reference:</b>	WELL @ 4978.0ft (RKB - 13')
<b>Site:</b>	SRC Union Pad Sec.5-T2N-R68W	<b>North Reference:</b>	True
<b>Well:</b>	SRC Union 5AHZN	<b>Survey Calculation Method:</b>	Minimum Curvature
<b>Wellbore:</b>	Wellbore #1		
<b>Design:</b>	Plan #2 (4-08-13)		

Planned Survey									
Measured Depth (ft)	Inclination (°)	Azimuth (°)	Vertical Depth (ft)	+N/-S (ft)	+E/-W (ft)	Vertical Section (ft)	Dogleg Rate (°/100ft)	Build Rate (°/100ft)	Turn Rate (°/100ft)
2,040.0	0.00	0.00	2,040.0	0.0	0.0	0.0	0.00	0.00	0.00
2,080.0	0.00	0.00	2,080.0	0.0	0.0	0.0	0.00	0.00	0.00
2,120.0	0.00	0.00	2,120.0	0.0	0.0	0.0	0.00	0.00	0.00
2,160.0	0.00	0.00	2,160.0	0.0	0.0	0.0	0.00	0.00	0.00
2,200.0	0.00	0.00	2,200.0	0.0	0.0	0.0	0.00	0.00	0.00
2,240.0	0.00	0.00	2,240.0	0.0	0.0	0.0	0.00	0.00	0.00
2,280.0	0.00	0.00	2,280.0	0.0	0.0	0.0	0.00	0.00	0.00
2,320.0	0.00	0.00	2,320.0	0.0	0.0	0.0	0.00	0.00	0.00
2,360.0	0.00	0.00	2,360.0	0.0	0.0	0.0	0.00	0.00	0.00
2,400.0	0.00	0.00	2,400.0	0.0	0.0	0.0	0.00	0.00	0.00
2,440.0	0.00	0.00	2,440.0	0.0	0.0	0.0	0.00	0.00	0.00
2,480.0	0.00	0.00	2,480.0	0.0	0.0	0.0	0.00	0.00	0.00
2,520.0	0.00	0.00	2,520.0	0.0	0.0	0.0	0.00	0.00	0.00
2,560.0	0.00	0.00	2,560.0	0.0	0.0	0.0	0.00	0.00	0.00
2,600.0	0.00	0.00	2,600.0	0.0	0.0	0.0	0.00	0.00	0.00
2,640.0	0.00	0.00	2,640.0	0.0	0.0	0.0	0.00	0.00	0.00
2,680.0	0.00	0.00	2,680.0	0.0	0.0	0.0	0.00	0.00	0.00
2,720.0	0.00	0.00	2,720.0	0.0	0.0	0.0	0.00	0.00	0.00
2,760.0	0.00	0.00	2,760.0	0.0	0.0	0.0	0.00	0.00	0.00
2,800.0	0.00	0.00	2,800.0	0.0	0.0	0.0	0.00	0.00	0.00
2,840.0	0.00	0.00	2,840.0	0.0	0.0	0.0	0.00	0.00	0.00
2,880.0	0.00	0.00	2,880.0	0.0	0.0	0.0	0.00	0.00	0.00
2,920.0	0.00	0.00	2,920.0	0.0	0.0	0.0	0.00	0.00	0.00
2,960.0	0.00	0.00	2,960.0	0.0	0.0	0.0	0.00	0.00	0.00
3,000.0	0.00	0.00	3,000.0	0.0	0.0	0.0	0.00	0.00	0.00
<b>KOP #1</b>									
3,040.0	0.80	278.15	3,040.0	0.0	-0.3	-0.3	2.00	2.00	0.00
3,080.0	1.60	278.15	3,080.0	0.2	-1.1	-1.1	2.00	2.00	0.00
3,120.0	2.40	278.15	3,120.0	0.4	-2.5	-2.5	2.00	2.00	0.00
3,160.0	3.20	278.15	3,159.9	0.6	-4.4	-4.4	2.00	2.00	0.00
3,200.0	4.00	278.15	3,199.8	1.0	-6.9	-6.9	2.00	2.00	0.00
3,240.0	4.80	278.15	3,239.7	1.4	-9.9	-9.9	2.00	2.00	0.00
3,280.0	5.60	278.15	3,279.6	1.9	-13.5	-13.5	2.00	2.00	0.00
3,320.0	6.40	278.15	3,319.3	2.5	-17.7	-17.6	2.00	2.00	0.00
3,360.0	7.20	278.15	3,359.1	3.2	-22.4	-22.3	2.00	2.00	0.00
3,400.0	8.00	278.15	3,398.7	4.0	-27.6	-27.5	2.00	2.00	0.00
3,440.0	8.80	278.15	3,438.3	4.8	-33.4	-33.3	2.00	2.00	0.00
3,480.0	9.60	278.15	3,477.8	5.7	-39.7	-39.6	2.00	2.00	0.00
3,520.0	10.40	278.15	3,517.1	6.7	-46.6	-46.5	2.00	2.00	0.00
3,526.4	10.53	278.15	3,523.5	6.8	-47.7	-47.7	2.00	2.00	0.00
3,560.0	10.53	278.15	3,556.5	7.7	-53.8	-53.7	0.00	0.00	0.00
3,600.0	10.53	278.15	3,595.8	8.7	-61.1	-60.9	0.00	0.00	0.00
3,640.0	10.53	278.15	3,635.1	9.8	-68.3	-68.2	0.00	0.00	0.00
3,680.0	10.53	278.15	3,674.5	10.8	-75.5	-75.4	0.00	0.00	0.00
3,720.0	10.53	278.15	3,713.8	11.8	-82.8	-82.6	0.00	0.00	0.00
3,760.0	10.53	278.15	3,753.1	12.9	-90.0	-89.8	0.00	0.00	0.00
3,800.0	10.53	278.15	3,792.4	13.9	-97.2	-97.0	0.00	0.00	0.00
3,840.0	10.53	278.15	3,831.8	15.0	-104.5	-104.3	0.00	0.00	0.00
3,880.0	10.53	278.15	3,871.1	16.0	-111.7	-111.5	0.00	0.00	0.00
3,920.0	10.53	278.15	3,910.4	17.0	-118.9	-118.7	0.00	0.00	0.00
3,960.0	10.53	278.15	3,949.7	18.1	-126.2	-125.9	0.00	0.00	0.00
4,000.0	10.53	278.15	3,989.1	19.1	-133.4	-133.1	0.00	0.00	0.00
4,040.0	10.53	278.15	4,028.4	20.1	-140.6	-140.4	0.00	0.00	0.00
4,080.0	10.53	278.15	4,067.7	21.2	-147.9	-147.6	0.00	0.00	0.00

<b>Database:</b>	Landmark	<b>Local Co-ordinate Reference:</b>	Well SRC Union 5AHZN
<b>Company:</b>	Synergy Resources	<b>TVD Reference:</b>	WELL @ 4978.0ft (RKB - 13')
<b>Project:</b>	SEC.5-T2N-R68W	<b>MD Reference:</b>	WELL @ 4978.0ft (RKB - 13')
<b>Site:</b>	SRC Union Pad Sec.5-T2N-R68W	<b>North Reference:</b>	True
<b>Well:</b>	SRC Union 5AHZN	<b>Survey Calculation Method:</b>	Minimum Curvature
<b>Wellbore:</b>	Wellbore #1		
<b>Design:</b>	Plan #2 (4-08-13)		

Planned Survey									
Measured Depth (ft)	Inclination (°)	Azimuth (°)	Vertical Depth (ft)	+N/-S (ft)	+E/-W (ft)	Vertical Section (ft)	Dogleg Rate (°/100ft)	Build Rate (°/100ft)	Turn Rate (°/100ft)
4,092.5	10.53	278.15	4,080.0	21.5	-150.1	-149.8	0.00	0.00	0.00
<b>SUSSEX</b>									
4,120.0	10.53	278.15	4,107.0	22.2	-155.1	-154.8	0.00	0.00	0.00
4,160.0	10.53	278.15	4,146.4	23.2	-162.3	-162.0	0.00	0.00	0.00
4,200.0	10.53	278.15	4,185.7	24.3	-169.6	-169.3	0.00	0.00	0.00
4,240.0	10.53	278.15	4,225.0	25.3	-176.8	-176.5	0.00	0.00	0.00
4,280.0	10.53	278.15	4,264.4	26.3	-184.1	-183.7	0.00	0.00	0.00
4,320.0	10.53	278.15	4,303.7	27.4	-191.3	-190.9	0.00	0.00	0.00
4,360.0	10.53	278.15	4,343.0	28.4	-198.5	-198.1	0.00	0.00	0.00
4,400.0	10.53	278.15	4,382.3	29.5	-205.8	-205.4	0.00	0.00	0.00
4,440.0	10.53	278.15	4,421.7	30.5	-213.0	-212.6	0.00	0.00	0.00
4,480.0	10.53	278.15	4,461.0	31.5	-220.2	-219.8	0.00	0.00	0.00
4,519.7	10.53	278.15	4,500.0	32.5	-227.4	-227.0	0.00	0.00	0.00
<b>SHANNON</b>									
4,520.0	10.53	278.15	4,500.3	32.6	-227.5	-227.0	0.00	0.00	0.00
4,560.0	10.53	278.15	4,539.6	33.6	-234.7	-234.2	0.00	0.00	0.00
4,600.0	10.53	278.15	4,579.0	34.6	-241.9	-241.5	0.00	0.00	0.00
4,640.0	10.53	278.15	4,618.3	35.7	-249.2	-248.7	0.00	0.00	0.00
4,680.0	10.53	278.15	4,657.6	36.7	-256.4	-255.9	0.00	0.00	0.00
4,720.0	10.53	278.15	4,696.9	37.7	-263.6	-263.1	0.00	0.00	0.00
4,760.0	10.53	278.15	4,736.3	38.8	-270.9	-270.3	0.00	0.00	0.00
4,800.0	10.53	278.15	4,775.6	39.8	-278.1	-277.6	0.00	0.00	0.00
4,840.0	10.53	278.15	4,814.9	40.8	-285.3	-284.8	0.00	0.00	0.00
4,880.0	10.53	278.15	4,854.3	41.9	-292.6	-292.0	0.00	0.00	0.00
4,920.0	10.53	278.15	4,893.6	42.9	-299.8	-299.2	0.00	0.00	0.00
4,960.0	10.53	278.15	4,932.9	44.0	-307.0	-306.5	0.00	0.00	0.00
5,000.0	10.53	278.15	4,972.2	45.0	-314.3	-313.7	0.00	0.00	0.00
5,040.0	10.53	278.15	5,011.6	46.0	-321.5	-320.9	0.00	0.00	0.00
5,080.0	10.53	278.15	5,050.9	47.1	-328.8	-328.1	0.00	0.00	0.00
5,120.0	10.53	278.15	5,090.2	48.1	-336.0	-335.3	0.00	0.00	0.00
5,160.0	10.53	278.15	5,129.5	49.1	-343.2	-342.6	0.00	0.00	0.00
5,200.0	10.53	278.15	5,168.9	50.2	-350.5	-349.8	0.00	0.00	0.00
5,240.0	10.53	278.15	5,208.2	51.2	-357.7	-357.0	0.00	0.00	0.00
5,280.0	10.53	278.15	5,247.5	52.2	-364.9	-364.2	0.00	0.00	0.00
5,320.0	10.53	278.15	5,286.8	53.3	-372.2	-371.4	0.00	0.00	0.00
5,360.0	10.53	278.15	5,326.2	54.3	-379.4	-378.7	0.00	0.00	0.00
5,400.0	10.53	278.15	5,365.5	55.3	-386.6	-385.9	0.00	0.00	0.00
5,440.0	10.53	278.15	5,404.8	56.4	-393.9	-393.1	0.00	0.00	0.00
5,480.0	10.53	278.15	5,444.2	57.4	-401.1	-400.3	0.00	0.00	0.00
5,520.0	10.53	278.15	5,483.5	58.4	-408.3	-407.6	0.00	0.00	0.00
5,560.0	10.53	278.15	5,522.8	59.5	-415.6	-414.8	0.00	0.00	0.00
5,600.0	10.53	278.15	5,562.1	60.5	-422.8	-422.0	0.00	0.00	0.00
5,640.0	10.53	278.15	5,601.5	61.6	-430.0	-429.2	0.00	0.00	0.00
5,680.0	10.53	278.15	5,640.8	62.6	-437.3	-436.4	0.00	0.00	0.00
5,720.0	10.53	278.15	5,680.1	63.6	-444.5	-443.7	0.00	0.00	0.00
5,760.0	10.53	278.15	5,719.4	64.7	-451.8	-450.9	0.00	0.00	0.00
5,800.0	10.53	278.15	5,758.8	65.7	-459.0	-458.1	0.00	0.00	0.00
5,818.1	10.53	278.15	5,776.5	66.2	-462.3	-461.4	0.00	0.00	0.00
5,840.0	10.09	278.15	5,798.1	66.7	-466.1	-465.2	2.00	-2.00	0.00
5,880.0	9.29	278.15	5,837.5	67.7	-472.8	-471.9	2.00	-2.00	0.00
5,920.0	8.49	278.15	5,877.1	68.6	-478.9	-478.0	2.00	-2.00	0.00
5,960.0	7.69	278.15	5,916.7	69.3	-484.5	-483.6	2.00	-2.00	0.00
6,000.0	6.89	278.15	5,956.3	70.1	-489.5	-488.6	2.00	-2.00	0.00

<b>Database:</b>	Landmark	<b>Local Co-ordinate Reference:</b>	Well SRC Union 5AHZN
<b>Company:</b>	Synergy Resources	<b>TVD Reference:</b>	WELL @ 4978.0ft (RKB - 13')
<b>Project:</b>	SEC.5-T2N-R68W	<b>MD Reference:</b>	WELL @ 4978.0ft (RKB - 13')
<b>Site:</b>	SRC Union Pad Sec.5-T2N-R68W	<b>North Reference:</b>	True
<b>Well:</b>	SRC Union 5AHZN	<b>Survey Calculation Method:</b>	Minimum Curvature
<b>Wellbore:</b>	Wellbore #1		
<b>Design:</b>	Plan #2 (4-08-13)		

Planned Survey									
Measured Depth (ft)	Inclination (°)	Azimuth (°)	Vertical Depth (ft)	+N/-S (ft)	+E/-W (ft)	Vertical Section (ft)	Dogleg Rate (°/100ft)	Build Rate (°/100ft)	Turn Rate (°/100ft)
6,040.0	6.09	278.15	5,996.1	70.7	-494.0	-493.0	2.00	-2.00	0.00
6,080.0	5.29	278.15	6,035.9	71.3	-497.9	-497.0	2.00	-2.00	0.00
6,120.0	4.49	278.15	6,075.7	71.8	-501.3	-500.3	2.00	-2.00	0.00
6,160.0	3.69	278.15	6,115.6	72.2	-504.1	-503.1	2.00	-2.00	0.00
6,200.0	2.89	278.15	6,155.6	72.5	-506.4	-505.4	2.00	-2.00	0.00
6,240.0	2.09	278.15	6,195.5	72.7	-508.1	-507.1	2.00	-2.00	0.00
6,280.0	1.29	278.15	6,235.5	72.9	-509.3	-508.3	2.00	-2.00	0.00
6,320.0	0.49	278.15	6,275.5	73.0	-509.9	-508.9	2.00	-2.00	0.00
6,344.5	0.00	0.00	6,300.0	73.0	-510.0	-509.0	2.00	-2.00	0.00
6,360.0	0.00	0.00	6,315.5	73.0	-510.0	-509.0	0.00	0.00	0.00
6,400.0	0.00	0.00	6,355.5	73.0	-510.0	-509.0	0.00	0.00	0.00
6,440.0	0.00	0.00	6,395.5	73.0	-510.0	-509.0	0.00	0.00	0.00
6,480.0	0.00	0.00	6,435.5	73.0	-510.0	-509.0	0.00	0.00	0.00
6,520.0	0.00	0.00	6,475.5	73.0	-510.0	-509.0	0.00	0.00	0.00
6,523.6	0.00	0.00	6,479.1	73.0	-510.0	-509.0	0.00	0.00	0.00
<b>KOP #2</b>									
6,560.0	4.00	90.25	6,515.5	73.0	-508.7	-507.7	10.99	10.99	0.00
6,600.0	8.40	90.25	6,555.2	73.0	-504.4	-503.4	11.00	11.00	0.00
6,640.0	12.80	90.25	6,594.5	72.9	-497.1	-496.1	11.00	11.00	0.00
6,680.0	17.20	90.25	6,633.2	72.9	-486.7	-485.7	11.00	11.00	0.00
6,720.0	21.60	90.25	6,670.9	72.8	-473.4	-472.4	11.00	11.00	0.00
6,760.0	26.00	90.25	6,707.5	72.8	-457.3	-456.3	11.00	11.00	0.00
6,800.0	30.40	90.25	6,742.7	72.7	-438.4	-437.4	11.00	11.00	0.00
6,840.0	34.80	90.25	6,776.4	72.6	-416.8	-415.9	11.00	11.00	0.00
6,880.0	39.20	90.25	6,808.3	72.5	-392.8	-391.8	11.00	11.00	0.00
6,920.0	43.60	90.25	6,838.3	72.4	-366.3	-365.4	11.00	11.00	0.00
6,960.0	48.00	90.25	6,866.2	72.2	-337.7	-336.7	11.00	11.00	0.00
7,000.0	52.40	90.25	6,891.8	72.1	-306.9	-306.0	11.00	11.00	0.00
7,040.0	56.80	90.25	6,915.0	72.0	-274.3	-273.4	11.00	11.00	0.00
7,080.0	61.20	90.25	6,935.6	71.8	-240.1	-239.1	11.00	11.00	0.00
7,120.0	65.60	90.25	6,953.5	71.6	-204.3	-203.4	11.00	11.00	0.00
7,160.0	70.00	90.25	6,968.6	71.5	-167.3	-166.3	11.00	11.00	0.00
7,200.0	74.40	90.25	6,980.8	71.3	-129.2	-128.3	11.00	11.00	0.00
7,240.0	78.80	90.25	6,990.1	71.1	-90.3	-89.4	11.00	11.00	0.00
7,280.0	83.20	90.25	6,996.3	71.0	-50.8	-49.9	11.00	11.00	0.00
7,320.0	87.60	90.25	6,999.5	70.8	-10.9	-10.0	11.00	11.00	0.00
7,341.8	90.00	90.25	7,000.0	70.7	10.9	11.8	11.00	11.00	0.00
<b>NIOBRARA - 7"</b>									
7,341.9	90.00	90.25	7,000.0	70.7	11.0	11.9	0.62	0.62	0.00
<b>Landing pt 1556' FNL &amp; 510'FWL</b>									
7,348.7	90.00	90.19	7,000.0	70.7	17.7	18.7	1.00	0.00	-1.00
7,360.0	90.00	90.19	7,000.0	70.6	29.1	30.0	0.00	0.00	0.00
7,400.0	90.00	90.19	7,000.0	70.5	69.1	70.0	0.00	0.00	0.00
7,440.0	90.00	90.19	7,000.0	70.4	109.1	110.0	0.00	0.00	0.00
7,480.0	90.00	90.19	7,000.0	70.2	149.1	150.0	0.00	0.00	0.00
7,520.0	90.00	90.19	7,000.0	70.1	189.1	189.9	0.00	0.00	0.00
7,560.0	90.00	90.19	7,000.0	70.0	229.1	229.9	0.00	0.00	0.00
7,600.0	90.00	90.19	7,000.0	69.8	269.1	269.9	0.00	0.00	0.00
7,640.0	90.00	90.19	7,000.0	69.7	309.1	309.9	0.00	0.00	0.00
7,680.0	90.00	90.19	7,000.0	69.6	349.1	349.9	0.00	0.00	0.00
7,720.0	90.00	90.19	7,000.0	69.5	389.1	389.9	0.00	0.00	0.00
7,760.0	90.00	90.19	7,000.0	69.3	429.1	429.9	0.00	0.00	0.00
7,800.0	90.00	90.19	7,000.0	69.2	469.1	469.9	0.00	0.00	0.00

<b>Database:</b>	Landmark	<b>Local Co-ordinate Reference:</b>	Well SRC Union 5AHZN
<b>Company:</b>	Synergy Resources	<b>TVD Reference:</b>	WELL @ 4978.0ft (RKB - 13')
<b>Project:</b>	SEC.5-T2N-R68W	<b>MD Reference:</b>	WELL @ 4978.0ft (RKB - 13')
<b>Site:</b>	SRC Union Pad Sec.5-T2N-R68W	<b>North Reference:</b>	True
<b>Well:</b>	SRC Union 5AHZN	<b>Survey Calculation Method:</b>	Minimum Curvature
<b>Wellbore:</b>	Wellbore #1		
<b>Design:</b>	Plan #2 (4-08-13)		

Planned Survey									
Measured Depth (ft)	Inclination (°)	Azimuth (°)	Vertical Depth (ft)	+N/-S (ft)	+E/-W (ft)	Vertical Section (ft)	Dogleg Rate (°/100ft)	Build Rate (°/100ft)	Turn Rate (°/100ft)
7,840.0	90.00	90.19	7,000.0	69.1	509.1	509.9	0.00	0.00	0.00
7,880.0	90.00	90.19	7,000.0	68.9	549.1	549.9	0.00	0.00	0.00
7,920.0	90.00	90.19	7,000.0	68.8	589.1	589.9	0.00	0.00	0.00
7,960.0	90.00	90.19	7,000.0	68.7	629.1	629.9	0.00	0.00	0.00
8,000.0	90.00	90.19	7,000.0	68.5	669.1	669.9	0.00	0.00	0.00
8,040.0	90.00	90.19	7,000.0	68.4	709.1	709.9	0.00	0.00	0.00
8,080.0	90.00	90.19	7,000.0	68.3	749.1	749.9	0.00	0.00	0.00
8,120.0	90.00	90.19	7,000.0	68.2	789.1	789.9	0.00	0.00	0.00
8,160.0	90.00	90.19	7,000.0	68.0	829.1	829.9	0.00	0.00	0.00
8,200.0	90.00	90.19	7,000.0	67.9	869.1	869.9	0.00	0.00	0.00
8,240.0	90.00	90.19	7,000.0	67.8	909.1	909.9	0.00	0.00	0.00
8,280.0	90.00	90.19	7,000.0	67.6	949.1	949.8	0.00	0.00	0.00
8,320.0	90.00	90.19	7,000.0	67.5	989.1	989.8	0.00	0.00	0.00
8,360.0	90.00	90.19	7,000.0	67.4	1,029.1	1,029.8	0.00	0.00	0.00
8,400.0	90.00	90.19	7,000.0	67.2	1,069.1	1,069.8	0.00	0.00	0.00
8,440.0	90.00	90.19	7,000.0	67.1	1,109.1	1,109.8	0.00	0.00	0.00
8,480.0	90.00	90.19	7,000.0	67.0	1,149.1	1,149.8	0.00	0.00	0.00
8,520.0	90.00	90.19	7,000.0	66.9	1,189.1	1,189.8	0.00	0.00	0.00
8,560.0	90.00	90.19	7,000.0	66.7	1,229.1	1,229.8	0.00	0.00	0.00
8,600.0	90.00	90.19	7,000.0	66.6	1,269.1	1,269.8	0.00	0.00	0.00
8,640.0	90.00	90.19	7,000.0	66.5	1,309.1	1,309.8	0.00	0.00	0.00
8,680.0	90.00	90.19	7,000.0	66.3	1,349.1	1,349.8	0.00	0.00	0.00
8,720.0	90.00	90.19	7,000.0	66.2	1,389.1	1,389.8	0.00	0.00	0.00
8,760.0	90.00	90.19	7,000.0	66.1	1,429.1	1,429.8	0.00	0.00	0.00
8,800.0	90.00	90.19	7,000.0	65.9	1,469.1	1,469.8	0.00	0.00	0.00
8,840.0	90.00	90.19	7,000.0	65.8	1,509.1	1,509.8	0.00	0.00	0.00
8,880.0	90.00	90.19	7,000.0	65.7	1,549.1	1,549.8	0.00	0.00	0.00
8,920.0	90.00	90.19	7,000.0	65.6	1,589.1	1,589.8	0.00	0.00	0.00
8,960.0	90.00	90.19	7,000.0	65.4	1,629.1	1,629.8	0.00	0.00	0.00
9,000.0	90.00	90.19	7,000.0	65.3	1,669.0	1,669.8	0.00	0.00	0.00
9,040.0	90.00	90.19	7,000.0	65.2	1,709.0	1,709.7	0.00	0.00	0.00
9,080.0	90.00	90.19	7,000.0	65.0	1,749.0	1,749.7	0.00	0.00	0.00
9,120.0	90.00	90.19	7,000.0	64.9	1,789.0	1,789.7	0.00	0.00	0.00
9,160.0	90.00	90.19	7,000.0	64.8	1,829.0	1,829.7	0.00	0.00	0.00
9,200.0	90.00	90.19	7,000.0	64.6	1,869.0	1,869.7	0.00	0.00	0.00
9,240.0	90.00	90.19	7,000.0	64.5	1,909.0	1,909.7	0.00	0.00	0.00
9,280.0	90.00	90.19	7,000.0	64.4	1,949.0	1,949.7	0.00	0.00	0.00
9,320.0	90.00	90.19	7,000.0	64.3	1,989.0	1,989.7	0.00	0.00	0.00
9,360.0	90.00	90.19	7,000.0	64.1	2,029.0	2,029.7	0.00	0.00	0.00
9,400.0	90.00	90.19	7,000.0	64.0	2,069.0	2,069.7	0.00	0.00	0.00
9,440.0	90.00	90.19	7,000.0	63.9	2,109.0	2,109.7	0.00	0.00	0.00
9,480.0	90.00	90.19	7,000.0	63.7	2,149.0	2,149.7	0.00	0.00	0.00
9,520.0	90.00	90.19	7,000.0	63.6	2,189.0	2,189.7	0.00	0.00	0.00
9,560.0	90.00	90.19	7,000.0	63.5	2,229.0	2,229.7	0.00	0.00	0.00
9,600.0	90.00	90.19	7,000.0	63.3	2,269.0	2,269.7	0.00	0.00	0.00
9,640.0	90.00	90.19	7,000.0	63.2	2,309.0	2,309.7	0.00	0.00	0.00
9,680.0	90.00	90.19	7,000.0	63.1	2,349.0	2,349.7	0.00	0.00	0.00
9,720.0	90.00	90.19	7,000.0	63.0	2,389.0	2,389.7	0.00	0.00	0.00
9,760.0	90.00	90.19	7,000.0	62.8	2,429.0	2,429.7	0.00	0.00	0.00
9,800.0	90.00	90.19	7,000.0	62.7	2,469.0	2,469.6	0.00	0.00	0.00
9,840.0	90.00	90.19	7,000.0	62.6	2,509.0	2,509.6	0.00	0.00	0.00
9,880.0	90.00	90.19	7,000.0	62.4	2,549.0	2,549.6	0.00	0.00	0.00
9,920.0	90.00	90.19	7,000.0	62.3	2,589.0	2,589.6	0.00	0.00	0.00
9,960.0	90.00	90.19	7,000.0	62.2	2,629.0	2,629.6	0.00	0.00	0.00

<b>Database:</b>	Landmark	<b>Local Co-ordinate Reference:</b>	Well SRC Union 5AHZN
<b>Company:</b>	Synergy Resources	<b>TVD Reference:</b>	WELL @ 4978.0ft (RKB - 13')
<b>Project:</b>	SEC.5-T2N-R68W	<b>MD Reference:</b>	WELL @ 4978.0ft (RKB - 13')
<b>Site:</b>	SRC Union Pad Sec.5-T2N-R68W	<b>North Reference:</b>	True
<b>Well:</b>	SRC Union 5AHZN	<b>Survey Calculation Method:</b>	Minimum Curvature
<b>Wellbore:</b>	Wellbore #1		
<b>Design:</b>	Plan #2 (4-08-13)		

#### Planned Survey

Measured Depth (ft)	Inclination (°)	Azimuth (°)	Vertical Depth (ft)	+N/-S (ft)	+E/-W (ft)	Vertical Section (ft)	Dogleg Rate (°/100ft)	Build Rate (°/100ft)	Turn Rate (°/100ft)
10,000.0	90.00	90.19	7,000.0	62.0	2,669.0	2,669.6	0.00	0.00	0.00
10,040.0	90.00	90.19	7,000.0	61.9	2,709.0	2,709.6	0.00	0.00	0.00
10,080.0	90.00	90.19	7,000.0	61.8	2,749.0	2,749.6	0.00	0.00	0.00
10,120.0	90.00	90.19	7,000.0	61.7	2,789.0	2,789.6	0.00	0.00	0.00
10,160.0	90.00	90.19	7,000.0	61.5	2,829.0	2,829.6	0.00	0.00	0.00
10,200.0	90.00	90.19	7,000.0	61.4	2,869.0	2,869.6	0.00	0.00	0.00
10,240.0	90.00	90.19	7,000.0	61.3	2,909.0	2,909.6	0.00	0.00	0.00
10,280.0	90.00	90.19	7,000.0	61.1	2,949.0	2,949.6	0.00	0.00	0.00
10,320.0	90.00	90.19	7,000.0	61.0	2,989.0	2,989.6	0.00	0.00	0.00
10,360.0	90.00	90.19	7,000.0	60.9	3,029.0	3,029.6	0.00	0.00	0.00
10,400.0	90.00	90.19	7,000.0	60.7	3,069.0	3,069.6	0.00	0.00	0.00
10,440.0	90.00	90.19	7,000.0	60.6	3,109.0	3,109.6	0.00	0.00	0.00
10,480.0	90.00	90.19	7,000.0	60.5	3,149.0	3,149.6	0.00	0.00	0.00
10,520.0	90.00	90.19	7,000.0	60.3	3,189.0	3,189.6	0.00	0.00	0.00
10,560.0	90.00	90.19	7,000.0	60.2	3,229.0	3,229.6	0.00	0.00	0.00
10,600.0	90.00	90.19	7,000.0	60.1	3,269.0	3,269.5	0.00	0.00	0.00
10,640.0	90.00	90.19	7,000.0	60.0	3,309.0	3,309.5	0.00	0.00	0.00
10,680.0	90.00	90.19	7,000.0	59.8	3,349.0	3,349.5	0.00	0.00	0.00
10,720.0	90.00	90.19	7,000.0	59.7	3,389.0	3,389.5	0.00	0.00	0.00
10,760.0	90.00	90.19	7,000.0	59.6	3,429.0	3,429.5	0.00	0.00	0.00
10,800.0	90.00	90.19	7,000.0	59.4	3,469.0	3,469.5	0.00	0.00	0.00
10,840.0	90.00	90.19	7,000.0	59.3	3,509.0	3,509.5	0.00	0.00	0.00
10,880.0	90.00	90.19	7,000.0	59.2	3,549.0	3,549.5	0.00	0.00	0.00
10,920.0	90.00	90.19	7,000.0	59.0	3,589.0	3,589.5	0.00	0.00	0.00
10,960.0	90.00	90.19	7,000.0	58.9	3,629.0	3,629.5	0.00	0.00	0.00
11,000.0	90.00	90.19	7,000.0	58.8	3,669.0	3,669.5	0.00	0.00	0.00
11,040.0	90.00	90.19	7,000.0	58.7	3,709.0	3,709.5	0.00	0.00	0.00
11,080.0	90.00	90.19	7,000.0	58.5	3,749.0	3,749.5	0.00	0.00	0.00
11,120.0	90.00	90.19	7,000.0	58.4	3,789.0	3,789.5	0.00	0.00	0.00
11,160.0	90.00	90.19	7,000.0	58.3	3,829.0	3,829.5	0.00	0.00	0.00
11,200.0	90.00	90.19	7,000.0	58.1	3,869.0	3,869.5	0.00	0.00	0.00
11,240.0	90.00	90.19	7,000.0	58.0	3,909.0	3,909.5	0.00	0.00	0.00
11,280.0	90.00	90.19	7,000.0	57.9	3,949.0	3,949.5	0.00	0.00	0.00
11,320.0	90.00	90.19	7,000.0	57.7	3,989.0	3,989.5	0.00	0.00	0.00
11,360.0	90.00	90.19	7,000.0	57.6	4,029.0	4,029.4	0.00	0.00	0.00
11,400.0	90.00	90.19	7,000.0	57.5	4,069.0	4,069.4	0.00	0.00	0.00
11,440.0	90.00	90.19	7,000.0	57.4	4,109.0	4,109.4	0.00	0.00	0.00
11,480.0	90.00	90.19	7,000.0	57.2	4,149.0	4,149.4	0.00	0.00	0.00
11,520.0	90.00	90.19	7,000.0	57.1	4,189.0	4,189.4	0.00	0.00	0.00
11,560.0	90.00	90.19	7,000.0	57.0	4,229.0	4,229.4	0.00	0.00	0.00
11,600.0	90.00	90.19	7,000.0	56.8	4,269.0	4,269.4	0.00	0.00	0.00
11,640.0	90.00	90.19	7,000.0	56.7	4,309.0	4,309.4	0.00	0.00	0.00
11,680.0	90.00	90.19	7,000.0	56.6	4,349.0	4,349.4	0.00	0.00	0.00
11,703.2	90.00	90.19	7,000.0	56.5	4,372.2	4,372.6	0.00	0.00	0.00
BHL 1601'FNL, 460'FEL									

<b>Database:</b>	Landmark	<b>Local Co-ordinate Reference:</b>	Well SRC Union 5AHZN
<b>Company:</b>	Synergy Resources	<b>TVD Reference:</b>	WELL @ 4978.0ft (RKB - 13')
<b>Project:</b>	SEC.5-T2N-R68W	<b>MD Reference:</b>	WELL @ 4978.0ft (RKB - 13')
<b>Site:</b>	SRC Union Pad Sec.5-T2N-R68W	<b>North Reference:</b>	True
<b>Well:</b>	SRC Union 5AHZN	<b>Survey Calculation Method:</b>	Minimum Curvature
<b>Wellbore:</b>	Wellbore #1		
<b>Design:</b>	Plan #2 (4-08-13)		

Casing Points					
Measured Depth (ft)	Vertical Depth (ft)	Name	Casing Diameter (")	Hole Diameter (")	
7,341.8	7,000.0	7"	7	8-3/4	
800.0	800.0	9 5/8"	9-5/8	12-1/4	

Formations					
Measured Depth (ft)	Vertical Depth (ft)	Name	Lithology	Dip (°)	Dip Direction (°)
4,092.5	4,080.0	SUSSEX		0.00	
4,519.7	4,500.0	SHANNON		0.00	
7,341.8	7,000.0	NIOBRARA		0.00	
	7,310.0	CODELL		0.00	

Plan Annotations					
Measured Depth (ft)	Vertical Depth (ft)	Local Coordinates			
		+N/-S (ft)	+E/-W (ft)	Comment	
3,000.0	3,000.0	0.0	0.0	KOP #1	
6,523.6	6,479.1	73.0	-510.0	KOP #2	



# **Directional**

## **Synergy Resources**

**SEC.5-T2N-R68W**

**SRC Union Pad Sec.5-T2N-R68W**

**SRC Union 5AHZN**

**Wellbore #1**

**Plan #2 (4-08-13)**

## **Anticollision Report**

**08 April, 2013**



<b>Company:</b>	Synergy Resources	<b>Local Co-ordinate Reference:</b>	Well SRC Union 5AHZN
<b>Project:</b>	SEC.5-T2N-R68W	<b>TVD Reference:</b>	WELL @ 4978.0ft (RKB - 13')
<b>Reference Site:</b>	SRC Union Pad Sec.5-T2N-R68W	<b>MD Reference:</b>	WELL @ 4978.0ft (RKB - 13')
<b>Site Error:</b>	0.0ft	<b>North Reference:</b>	True
<b>Reference Well:</b>	SRC Union 5AHZN	<b>Survey Calculation Method:</b>	Minimum Curvature
<b>Well Error:</b>	0.0ft	<b>Output errors are at</b>	2.00 sigma
<b>Reference Wellbore</b>	Wellbore #1	<b>Database:</b>	Landmark
<b>Reference Design:</b>	Plan #2 (4-08-13)	<b>Offset TVD Reference:</b>	Offset Datum

Offset Design													Offset Site Error:	0.0 ft
Survey Program: 0-MWD													Offset Well Error:	0.0 ft
Reference		Offset		Semi Major Axis			Distance							Warning
Measured Depth (ft)	Vertical Depth (ft)	Measured Depth (ft)	Vertical Depth (ft)	Reference (ft)	Offset (ft)	Highside Toolface (°)	Offset Wellbore Centre +N/-S (ft)	+E/-W (ft)	Between Centres (ft)	Between Ellipses (ft)	Minimum Separation (ft)	Separation Factor		
400.0	400.0	399.0	399.0	0.8	0.8	-111.13	-36.1	-93.3	100.1	98.5	1.57	63.692		
500.0	500.0	499.0	499.0	1.0	1.0	-111.13	-36.1	-93.3	100.1	98.0	2.02	49.522		
600.0	600.0	599.0	599.0	1.2	1.2	-111.13	-36.1	-93.3	100.1	97.6	2.47	40.510		
700.0	700.0	699.0	699.0	1.5	1.5	-111.13	-36.1	-93.3	100.1	97.1	2.92	34.273		
800.0	800.0	799.0	799.0	1.7	1.7	-111.13	-36.1	-93.3	100.1	96.7	3.37	29.700		
900.0	900.0	899.0	899.0	1.9	1.9	-111.13	-36.1	-93.3	100.1	96.2	3.82	26.204		
1,000.0	1,000.0	1,000.8	1,000.8	2.1	2.1	-110.58	-34.8	-92.8	99.2	94.9	4.27	23.214		
1,100.0	1,100.0	1,102.5	1,102.4	2.4	2.4	-108.85	-31.1	-91.2	96.4	91.7	4.72	20.413		
1,200.0	1,200.0	1,204.0	1,203.6	2.6	2.6	-105.76	-25.0	-88.5	92.1	86.9	5.18	17.779		
1,300.0	1,300.0	1,305.0	1,304.2	2.8	2.8	-100.94	-16.4	-84.8	86.5	80.9	5.64	15.338		
1,400.0	1,400.0	1,405.4	1,403.9	3.0	3.1	-93.89	-5.4	-80.0	80.4	74.3	6.11	13.164		
1,500.0	1,500.0	1,505.1	1,502.6	3.3	3.4	-84.00	7.8	-74.3	74.8	68.2	6.57	11.386		
1,600.0	1,600.0	1,603.9	1,600.0	3.5	3.6	-71.52	22.7	-67.8	71.5	64.5	7.02	10.193		
1,638.3	1,638.3	1,641.7	1,637.3	3.6	3.8	-66.52	28.4	-65.3	71.2	64.1	7.19	9.913 CC, ES		
1,700.0	1,700.0	1,702.5	1,697.3	3.7	3.9	-58.49	37.6	-61.3	72.0	64.5	7.46	9.647		
1,800.0	1,800.0	1,801.2	1,794.6	3.9	4.3	-46.23	52.5	-54.8	76.1	68.2	7.92	9.603 SF		
1,900.0	1,900.0	1,899.8	1,891.9	4.2	4.6	-35.63	67.5	-48.4	83.3	74.9	8.42	9.896		
2,000.0	2,000.0	1,998.4	1,989.1	4.4	4.9	-26.94	82.4	-41.9	93.0	84.0	8.95	10.387		
2,100.0	2,100.0	2,097.0	2,086.4	4.6	5.3	-19.98	97.3	-35.4	104.3	94.8	9.50	10.980		
2,200.0	2,200.0	2,195.7	2,183.7	4.8	5.6	-14.43	112.3	-28.9	116.9	106.9	10.07	11.614		
2,300.0	2,300.0	2,294.3	2,281.0	5.1	5.9	-9.99	127.2	-22.4	130.4	119.8	10.64	12.252		
2,400.0	2,400.0	2,392.9	2,378.2	5.3	6.3	-6.39	142.1	-15.9	144.5	133.3	11.23	12.875		
2,500.0	2,500.0	2,491.6	2,475.5	5.5	6.6	-3.44	157.1	-9.4	159.1	147.3	11.81	13.472		
2,600.0	2,600.0	2,590.2	2,572.8	5.7	7.0	-0.98	172.0	-2.9	174.0	161.6	12.39	14.040		
2,700.0	2,700.0	2,688.8	2,670.1	6.0	7.3	1.09	186.9	3.5	189.2	176.2	12.98	14.575		
2,800.0	2,800.0	2,787.4	2,767.3	6.2	7.7	2.85	201.9	10.0	204.6	191.0	13.57	15.078		
2,900.0	2,900.0	2,886.1	2,864.6	6.4	8.1	4.36	216.8	16.5	220.1	206.0	14.16	15.550		
3,000.0	3,000.0	2,984.7	2,961.9	6.6	8.4	5.67	231.7	23.0	235.8	221.1	14.75	15.992		
3,100.0	3,100.0	3,083.2	3,059.1	6.8	8.8	88.76	246.7	29.5	251.6	237.5	14.10	17.839		
3,200.0	3,199.8	3,181.5	3,156.0	7.0	9.1	90.55	261.5	36.0	267.5	253.0	14.53	18.416		
3,300.0	3,299.5	3,279.4	3,252.5	7.3	9.5	92.79	276.4	42.4	283.9	269.0	14.94	18.999		
3,400.0	3,398.7	3,376.7	3,348.5	7.5	9.9	95.37	291.1	48.8	301.2	285.8	15.36	19.603		
3,500.0	3,497.5	3,473.4	3,443.9	7.7	10.2	98.22	305.7	55.2	319.6	303.8	15.79	20.240		
3,600.0	3,595.8	3,569.6	3,538.8	8.0	10.6	101.39	320.3	61.5	339.5	323.2	16.24	20.907		
3,700.0	3,694.1	3,665.8	3,633.6	8.2	10.9	104.32	334.9	67.8	360.3	343.6	16.71	21.568		
3,800.0	3,792.4	3,762.0	3,728.5	8.5	11.3	106.94	349.4	74.1	382.0	364.8	17.19	22.215		
3,900.0	3,890.8	3,858.1	3,823.3	8.8	11.6	109.28	364.0	80.5	404.3	386.6	17.70	22.842		
4,000.0	3,989.1	3,954.3	3,918.2	9.1	12.0	111.37	378.5	86.8	427.3	409.1	18.22	23.449		
4,100.0	4,087.4	4,050.5	4,013.0	9.4	12.3	113.26	393.1	93.1	450.7	432.0	18.76	24.033		
4,200.0	4,185.7	4,146.7	4,107.9	9.7	12.7	114.96	407.7	99.5	474.6	455.3	19.30	24.595		
4,300.0	4,284.0	4,242.8	4,202.7	10.1	13.1	116.50	422.2	105.8	498.9	479.0	19.85	25.133		
4,400.0	4,382.3	4,339.0	4,297.6	10.4	13.4	117.90	436.8	112.1	523.4	503.0	20.41	25.650		
4,500.0	4,480.7	4,435.2	4,392.4	10.7	13.8	119.17	451.4	118.4	548.3	527.3	20.97	26.145		
4,600.0	4,579.0	4,531.3	4,487.3	11.1	14.1	120.33	465.9	124.8	573.3	551.8	21.54	26.619		
4,700.0	4,677.3	4,627.5	4,582.1	11.4	14.5	121.40	480.5	131.1	598.6	576.5	22.11	27.073		
4,800.0	4,775.6	4,723.7	4,677.0	11.8	14.8	122.38	495.0	137.4	624.0	601.4	22.69	27.508		
4,900.0	4,873.9	4,819.8	4,771.8	12.1	15.2	123.29	509.6	143.7	649.6	626.4	23.26	27.925		
5,000.0	4,972.2	4,916.0	4,866.7	12.5	15.6	124.13	524.2	150.1	675.4	651.6	23.85	28.324		
5,100.0	5,070.6	5,012.2	4,961.5	12.9	15.9	124.90	538.7	156.4	701.3	676.8	24.43	28.707		
5,200.0	5,168.9	5,108.3	5,056.4	13.2	16.3	125.62	553.3	162.7	727.3	702.2	25.01	29.075		
5,300.0	5,267.2	5,204.5	5,151.2	13.6	16.6	126.30	567.8	169.0	753.4	727.8	25.60	29.428		
5,400.0	5,365.5	5,300.7	5,246.1	14.0	17.0	126.92	582.4	175.4	779.5	753.3	26.19	29.767		

CC - Min centre to center distance or convergent point, SF - min separation factor, ES - min ellipse separation

<b>Company:</b>	Synergy Resources	<b>Local Co-ordinate Reference:</b>	Well SRC Union 5AHZN
<b>Project:</b>	SEC.5-T2N-R68W	<b>TVD Reference:</b>	WELL @ 4978.0ft (RKB - 13')
<b>Reference Site:</b>	SRC Union Pad Sec.5-T2N-R68W	<b>MD Reference:</b>	WELL @ 4978.0ft (RKB - 13')
<b>Site Error:</b>	0.0ft	<b>North Reference:</b>	True
<b>Reference Well:</b>	SRC Union 5AHZN	<b>Survey Calculation Method:</b>	Minimum Curvature
<b>Well Error:</b>	0.0ft	<b>Output errors are at</b>	2.00 sigma
<b>Reference Wellbore</b>	Wellbore #1	<b>Database:</b>	Landmark
<b>Reference Design:</b>	Plan #2 (4-08-13)	<b>Offset TVD Reference:</b>	Offset Datum

Offset Design													Offset Site Error:		0.0 ft
Survey Program: 0-MWD													Offset Well Error:		0.0 ft
Reference		Offset		Semi Major Axis			Distance							Warning	
Measured Depth	Vertical Depth	Measured Depth	Vertical Depth	Reference	Offset	Highside Toolface	Offset Wellbore Centre		Between Centres	Between Ellipses	Minimum Separation	Separation Factor			
(ft)	(ft)	(ft)	(ft)	(ft)	(ft)	(°)	+N/-S (ft)	+E/-W (ft)	(ft)	(ft)	(ft)				
5,500.0	5,463.8	5,396.9	5,340.9	14.4	17.4	127.51	597.0	181.7	805.8	779.0	26.78	30.092			
5,600.0	5,562.1	5,493.0	5,435.8	14.7	17.7	128.06	611.5	188.0	832.1	804.8	27.37	30.405			
5,700.0	5,660.4	5,589.2	5,530.6	15.1	18.1	128.58	626.1	194.4	858.5	830.6	27.96	30.706			
5,800.0	5,758.8	5,685.4	5,625.5	15.5	18.4	129.06	640.7	200.7	885.0	856.5	28.55	30.996			
5,900.0	5,857.3	5,781.8	5,720.6	15.8	18.8	129.80	655.3	207.0	910.8	881.6	29.19	31.204			
6,000.0	5,956.3	5,878.9	5,816.4	16.1	19.2	130.38	670.0	213.4	934.5	904.7	29.78	31.380			
6,100.0	6,055.8	5,976.5	5,912.7	16.3	19.5	130.75	684.7	219.8	956.0	925.7	30.34	31.508			
6,200.0	6,155.6	6,074.6	6,009.4	16.5	19.9	130.93	699.6	226.3	975.3	944.4	30.87	31.595			
6,300.0	6,255.5	6,173.1	6,106.5	16.7	20.3	130.92	714.5	232.8	992.3	961.0	31.36	31.645			
6,900.0	6,823.6	6,741.8	6,667.4	17.0	22.4	-51.20	800.6	270.2	988.4	957.1	31.23	31.645			
7,000.0	6,891.8	6,813.8	6,738.5	17.1	22.7	-57.45	811.5	274.9	953.1	921.6	31.53	30.232			
7,100.0	6,944.9	6,871.7	6,795.5	17.4	22.9	-64.66	820.3	278.7	912.9	880.1	32.80	27.829			
7,200.0	6,980.8	6,913.2	6,836.5	18.0	23.0	-71.89	826.6	281.5	871.5	836.9	34.66	25.142			
7,300.0	6,998.3	6,936.9	6,859.8	19.0	23.1	-77.98	830.1	283.0	833.0	796.5	36.54	22.798			
7,400.0	7,000.0	6,945.0	6,867.9	20.2	23.2	-80.23	831.4	283.6	801.3	763.3	38.05	21.059			
7,500.0	7,000.0	6,951.6	6,874.3	21.8	23.2	-80.71	832.4	284.0	780.8	741.2	39.64	19.700			
7,600.0	7,000.0	6,958.1	6,880.8	23.6	23.2	-81.20	833.4	284.4	772.8	731.3	41.45	18.643			
7,612.9	7,000.0	6,958.9	6,881.6	23.9	23.2	-81.26	833.5	284.5	772.7	730.9	41.71	18.525			
7,700.0	7,000.0	6,964.6	6,887.2	25.6	23.2	-81.68	834.3	284.8	777.5	734.1	43.45	17.895			
7,800.0	7,000.0	6,971.2	6,893.6	27.7	23.3	-82.16	835.3	285.3	794.9	749.3	45.59	17.434			
7,900.0	7,000.0	6,977.7	6,900.1	29.9	23.3	-82.65	836.3	285.7	824.1	776.2	47.85	17.221			
8,000.0	7,000.0	6,984.2	6,906.5	32.2	23.3	-83.13	837.3	286.1	863.8	813.6	50.20	17.208			
8,100.0	7,000.0	6,990.7	6,913.0	34.6	23.3	-83.61	838.3	286.6	912.8	860.2	52.62	17.347			
8,200.0	7,000.0	6,997.3	6,919.4	37.1	23.4	-84.09	839.3	287.0	969.6	914.5	55.10	17.597			

<b>Company:</b>	Synergy Resources	<b>Local Co-ordinate Reference:</b>	Well SRC Union 5AHZN
<b>Project:</b>	SEC.5-T2N-R68W	<b>TVD Reference:</b>	WELL @ 4978.0ft (RKB - 13')
<b>Reference Site:</b>	SRC Union Pad Sec.5-T2N-R68W	<b>MD Reference:</b>	WELL @ 4978.0ft (RKB - 13')
<b>Site Error:</b>	0.0ft	<b>North Reference:</b>	True
<b>Reference Well:</b>	SRC Union 5AHZN	<b>Survey Calculation Method:</b>	Minimum Curvature
<b>Well Error:</b>	0.0ft	<b>Output errors are at</b>	2.00 sigma
<b>Reference Wellbore</b>	Wellbore #1	<b>Database:</b>	Landmark
<b>Reference Design:</b>	Plan #2 (4-08-13)	<b>Offset TVD Reference:</b>	Offset Datum

Offset Design													Offset Site Error:	0.0 ft
Survey Program: 0-MWD													Offset Well Error:	0.0 ft
Reference		Offset		Semi Major Axis			Distance							Warning
Measured Depth (ft)	Vertical Depth (ft)	Measured Depth (ft)	Vertical Depth (ft)	Reference (ft)	Offset (ft)	Highside Toolface (°)	Offset Wellbore Centre +N/-S (ft)	+E/-W (ft)	Between Centres (ft)	Between Ellipses (ft)	Minimum Separation (ft)	Separation Factor		
0.0	0.0	0.0	0.0	0.0	0.0	-111.09	-57.6	-149.2	160.0					
100.0	100.0	98.0	98.0	0.1	0.1	-111.09	-57.6	-149.2	160.0	159.7	0.22	718.813		
200.0	200.0	198.0	198.0	0.3	0.3	-111.09	-57.6	-149.2	160.0	159.3	0.67	238.805		
300.0	300.0	298.4	298.4	0.6	0.6	-110.49	-55.9	-149.7	159.8	158.7	1.12	142.394		
400.0	400.0	398.6	398.5	0.8	0.8	-108.63	-51.0	-151.2	159.5	157.9	1.58	100.743		
480.2	480.2	478.6	478.2	1.0	1.0	-106.24	-44.6	-153.0	159.4	157.4	1.96	81.472 CC		
500.0	500.0	498.3	497.8	1.0	1.0	-105.52	-42.7	-153.6	159.4	157.3	2.05	77.841 ES		
600.0	600.0	597.3	596.0	1.2	1.3	-101.23	-31.2	-156.9	160.0	157.5	2.51	63.629		
700.0	700.0	695.4	692.9	1.5	1.6	-95.86	-16.5	-161.2	162.1	159.1	2.99	54.302		
800.0	800.0	792.3	788.0	1.7	2.0	-89.65	1.0	-166.3	166.6	163.1	3.47	48.074		
900.0	900.0	888.1	881.5	1.9	2.4	-82.93	21.4	-172.2	174.3	170.4	3.97	43.893		
1,000.0	1,000.0	985.3	976.0	2.1	2.8	-76.41	43.2	-178.6	185.0	180.5	4.50	41.087		
1,100.0	1,100.0	1,082.6	1,070.6	2.4	3.3	-70.64	65.0	-184.9	197.9	192.8	5.07	39.002		
1,200.0	1,200.0	1,179.8	1,165.1	2.6	3.7	-65.59	86.8	-191.3	212.6	206.9	5.68	37.403		
1,300.0	1,300.0	1,277.0	1,259.7	2.8	4.2	-61.21	108.6	-197.6	228.7	222.4	6.32	36.171		
1,400.0	1,400.0	1,374.3	1,354.2	3.0	4.7	-57.41	130.4	-204.0	246.0	239.0	6.99	35.221		
1,500.0	1,500.0	1,471.5	1,448.8	3.3	5.1	-54.11	152.2	-210.3	264.2	256.6	7.66	34.487		
1,600.0	1,600.0	1,568.7	1,543.3	3.5	5.6	-51.23	174.0	-216.7	283.2	274.9	8.35	33.920		
1,700.0	1,700.0	1,666.0	1,637.9	3.7	6.1	-48.72	195.8	-223.0	302.8	293.8	9.04	33.480		
1,800.0	1,800.0	1,763.2	1,732.4	3.9	6.5	-46.51	217.6	-229.4	322.9	313.2	9.74	33.138		
1,900.0	1,900.0	1,860.4	1,826.9	4.2	7.0	-44.55	239.4	-235.7	343.4	333.0	10.45	32.872		
2,000.0	2,000.0	1,957.7	1,921.5	4.4	7.5	-42.82	261.2	-242.1	364.3	353.1	11.15	32.665		
2,100.0	2,100.0	2,054.9	2,016.0	4.6	8.0	-41.27	283.0	-248.4	385.4	373.6	11.86	32.503		
2,200.0	2,200.0	2,152.1	2,110.6	4.8	8.4	-39.89	304.8	-254.8	406.8	394.2	12.56	32.377		
2,300.0	2,300.0	2,249.4	2,205.1	5.1	8.9	-38.64	326.6	-261.1	428.4	415.1	13.27	32.279		
2,400.0	2,400.0	2,346.6	2,299.7	5.3	9.4	-37.51	348.5	-267.5	450.1	436.2	13.98	32.204		
2,500.0	2,500.0	2,443.8	2,394.2	5.5	9.9	-36.49	370.3	-273.8	472.1	457.4	14.68	32.147		
2,600.0	2,600.0	2,541.1	2,488.8	5.7	10.3	-35.55	392.1	-280.2	494.1	478.7	15.39	32.103		
2,700.0	2,700.0	2,638.3	2,583.3	6.0	10.8	-34.70	413.9	-286.5	516.3	500.2	16.10	32.072		
2,800.0	2,800.0	2,735.5	2,677.8	6.2	11.3	-33.91	435.7	-292.9	538.5	521.7	16.80	32.049		
2,900.0	2,900.0	2,832.8	2,772.4	6.4	11.7	-33.19	457.5	-299.2	560.9	543.4	17.51	32.034		
3,000.0	3,000.0	2,930.0	2,866.9	6.6	12.2	-32.52	479.3	-305.6	583.3	565.1	18.21	32.025 SF		
3,100.0	3,100.0	3,027.4	2,961.6	6.8	12.7	-49.75	501.1	-311.9	604.7	589.7	19.01	40.298		
3,200.0	3,199.8	3,125.0	3,056.5	7.0	13.2	50.39	523.0	-318.3	624.1	608.6	19.47	40.327		
3,300.0	3,299.5	3,222.7	3,151.5	7.3	13.7	51.24	544.9	-324.7	641.4	625.5	19.93	40.266		
3,400.0	3,398.7	3,320.4	3,246.5	7.5	14.1	52.30	566.8	-331.1	656.9	640.5	20.37	40.118		
3,500.0	3,497.5	3,417.9	3,341.3	7.7	14.6	53.56	588.7	-337.4	670.6	653.8	20.82	39.880		
3,600.0	3,595.8	3,515.3	3,436.0	8.0	15.1	55.08	610.5	-343.8	683.4	666.1	21.27	39.576		
3,700.0	3,694.1	3,612.6	3,530.7	8.2	15.6	56.62	632.4	-350.2	696.6	678.8	21.74	39.270		
3,800.0	3,792.4	3,710.0	3,625.3	8.5	16.0	58.10	654.2	-356.5	710.2	692.0	22.23	38.964		
3,900.0	3,890.8	3,807.4	3,720.0	8.8	16.5	59.52	676.0	-362.9	724.4	705.7	22.74	38.659		
4,000.0	3,989.1	3,904.7	3,814.7	9.1	17.0	60.89	697.9	-369.2	739.0	719.7	23.27	38.354		
4,100.0	4,087.4	4,002.1	3,909.3	9.4	17.5	62.20	719.7	-375.6	754.0	734.1	23.81	38.050		
4,200.0	4,185.7	4,099.4	4,004.0	9.7	17.9	63.47	741.5	-382.0	769.3	748.9	24.38	37.749		
4,300.0	4,284.0	4,196.8	4,098.7	10.1	18.4	64.69	763.4	-388.3	785.1	764.1	24.96	37.451		
4,400.0	4,382.3	4,294.1	4,193.3	10.4	18.9	65.86	785.2	-394.7	801.1	779.6	25.56	37.157		
4,500.0	4,480.7	4,391.5	4,288.0	10.7	19.4	66.98	807.0	-401.0	817.5	795.4	26.17	36.868		
4,600.0	4,579.0	4,488.9	4,382.7	11.1	19.8	68.07	828.9	-407.4	834.2	811.4	26.80	36.585		
4,700.0	4,677.3	4,586.2	4,477.3	11.4	20.3	69.10	850.7	-413.7	851.2	827.8	27.44	36.309		
4,800.0	4,775.6	4,683.6	4,572.0	11.8	20.8	70.10	872.5	-420.1	868.5	844.4	28.10	36.040		
4,900.0	4,873.9	4,780.9	4,666.7	12.1	21.3	71.07	894.4	-426.5	886.0	861.2	28.76	35.779		
5,000.0	4,972.2	4,878.3	4,761.3	12.5	21.8	71.99	916.2	-432.8	903.7	878.3	29.44	35.525		

CC - Min centre to center distance or convergent point, SF - min separation factor, ES - min ellipse separation

<b>Company:</b>	Synergy Resources	<b>Local Co-ordinate Reference:</b>	Well SRC Union 5AHZN
<b>Project:</b>	SEC.5-T2N-R68W	<b>TVD Reference:</b>	WELL @ 4978.0ft (RKB - 13')
<b>Reference Site:</b>	SRC Union Pad Sec.5-T2N-R68W	<b>MD Reference:</b>	WELL @ 4978.0ft (RKB - 13')
<b>Site Error:</b>	0.0ft	<b>North Reference:</b>	True
<b>Reference Well:</b>	SRC Union 5AHZN	<b>Survey Calculation Method:</b>	Minimum Curvature
<b>Well Error:</b>	0.0ft	<b>Output errors are at</b>	2.00 sigma
<b>Reference Wellbore</b>	Wellbore #1	<b>Database:</b>	Landmark
<b>Reference Design:</b>	Plan #2 (4-08-13)	<b>Offset TVD Reference:</b>	Offset Datum

Offset Design												SRC Union Pad Sec.5-T2N-R68W - SRC Union 11HZC - Wellbore #1 - Plan #2 (4-08-13)		Offset Site Error:		0.0 ft	
Survey Program: 0-MWD														Offset Well Error:		0.0 ft	
Reference		Offset		Semi Major Axis			Distance										
Measured Depth	Vertical Depth	Measured Depth	Vertical Depth	Reference	Offset	Highside Toolface	Offset Wellbore Centre		Between Centres	Between Ellipses	Minimum Separation	Separation Factor	Warning				
(ft)	(ft)	(ft)	(ft)	(ft)	(ft)	(°)	+N/-S (ft)	+E/-W (ft)	(ft)	(ft)	(ft)						
5,100.0	5,070.6	4,975.7	4,856.0	12.9	22.2	72.88	938.0	-439.2	921.7	895.6	26.12	35.280					
5,200.0	5,168.9	5,073.0	4,950.7	13.2	22.7	73.74	959.9	-445.5	939.9	913.0	26.82	35.044					
5,300.0	5,267.2	5,170.4	5,045.3	13.6	23.2	74.56	981.7	-451.9	958.2	930.7	27.52	34.816					
5,400.0	5,365.5	5,267.7	5,140.0	14.0	23.7	75.35	1,003.5	-458.3	976.8	948.6	28.23	34.596					
5,500.0	5,463.8	5,365.1	5,234.7	14.4	24.1	76.12	1,025.4	-464.6	995.6	966.6	28.95	34.385					

<b>Company:</b>	Synergy Resources	<b>Local Co-ordinate Reference:</b>	Well SRC Union 5AHZN
<b>Project:</b>	SEC.5-T2N-R68W	<b>TVD Reference:</b>	WELL @ 4978.0ft (RKB - 13')
<b>Reference Site:</b>	SRC Union Pad Sec.5-T2N-R68W	<b>MD Reference:</b>	WELL @ 4978.0ft (RKB - 13')
<b>Site Error:</b>	0.0ft	<b>North Reference:</b>	True
<b>Reference Well:</b>	SRC Union 5AHZN	<b>Survey Calculation Method:</b>	Minimum Curvature
<b>Well Error:</b>	0.0ft	<b>Output errors are at</b>	2.00 sigma
<b>Reference Wellbore</b>	Wellbore #1	<b>Database:</b>	Landmark
<b>Reference Design:</b>	Plan #2 (4-08-13)	<b>Offset TVD Reference:</b>	Offset Datum

Offset Design													SRC Union Pad Sec.5-T2N-R68W - SRC Union 11HZN - Wellbore #1 - Plan #2 (4-08-13)		Offset Site Error:		0.0 ft
Survey Program: 0-MWD													Offset Well Error:		0.0 ft		
Reference		Offset		Semi Major Axis		Highside Toolface (°)	Offset Wellbore Centre		Distance		Minimum Separation (ft)	Separation Factor	Warning				
Measured Depth (ft)	Vertical Depth (ft)	Measured Depth (ft)	Vertical Depth (ft)	Reference (ft)	Offset (ft)		+N/-S (ft)	+E/-W (ft)	Between Centres (ft)	Between Ellipses (ft)							
0.0	0.0	0.0	0.0	0.0	0.0	-111.20	-50.6	-130.5	140.0								
100.0	100.0	98.0	98.0	0.1	0.1	-111.20	-50.6	-130.5	140.0	139.8	0.22	629.099					
200.0	200.0	198.0	198.0	0.3	0.3	-111.20	-50.6	-130.5	140.0	139.3	0.67	209.000					
300.0	300.0	298.0	298.0	0.6	0.6	-111.20	-50.6	-130.5	140.0	138.9	1.12	125.064					
400.0	400.0	398.0	398.0	0.8	0.8	-111.20	-50.6	-130.5	140.0	138.4	1.57	89.229					
500.0	500.0	498.0	498.0	1.0	1.0	-111.20	-50.6	-130.5	140.0	138.0	2.02	69.356					
600.0	600.0	598.0	598.0	1.2	1.2	-111.20	-50.6	-130.5	140.0	137.5	2.47	56.723					
700.0	700.0	698.1	698.1	1.5	1.5	-110.52	-49.0	-131.1	139.9	137.0	2.92	47.957					
777.8	777.8	775.9	775.8	1.6	1.6	-109.00	-45.5	-132.3	139.9	136.6	3.27	42.773	CC				
800.0	800.0	798.1	797.9	1.7	1.7	-108.40	-44.2	-132.7	139.9	136.5	3.37	41.496					
900.0	900.0	897.5	897.0	1.9	1.9	-104.89	-36.0	-135.5	140.2	136.4	3.83	36.646	ES				
1,000.0	1,000.0	996.2	994.9	2.1	2.2	-100.07	-24.8	-139.4	141.6	137.3	4.29	33.049					
1,100.0	1,100.0	1,094.0	1,091.5	2.4	2.5	-94.15	-10.5	-144.3	144.9	140.1	4.75	30.511					
1,200.0	1,200.0	1,190.6	1,186.4	2.6	2.8	-87.44	6.7	-150.3	150.9	145.6	5.22	28.896					
1,300.0	1,300.0	1,288.1	1,281.8	2.8	3.1	-80.58	26.0	-156.9	159.9	154.2	5.71	27.981					
1,400.0	1,400.0	1,385.9	1,377.4	3.0	3.5	-74.48	45.4	-163.6	171.0	164.8	6.23	27.447					
1,500.0	1,500.0	1,483.7	1,473.0	3.3	3.9	-69.16	64.8	-170.2	183.9	177.1	6.78	27.130					
1,600.0	1,600.0	1,581.4	1,568.6	3.5	4.3	-64.55	84.2	-176.9	198.1	190.8	7.35	26.951					
1,700.0	1,700.0	1,679.2	1,664.2	3.7	4.7	-60.57	103.6	-183.6	213.5	205.5	7.95	26.863					
1,800.0	1,800.0	1,777.0	1,759.8	3.9	5.1	-57.13	123.0	-190.3	229.8	221.2	8.56	26.838					
1,900.0	1,900.0	1,874.8	1,855.4	4.2	5.5	-54.14	142.4	-196.9	246.7	237.5	9.19	26.855					
2,000.0	2,000.0	1,972.5	1,951.0	4.4	6.0	-51.54	161.7	-203.6	264.3	254.4	9.82	26.903					
2,100.0	2,100.0	2,070.3	2,046.6	4.6	6.4	-49.26	181.1	-210.3	282.3	271.8	10.47	26.971					
2,200.0	2,200.0	2,168.1	2,142.2	4.8	6.8	-47.26	200.5	-217.0	300.7	289.6	11.11	27.053					
2,300.0	2,300.0	2,265.9	2,237.8	5.1	7.2	-45.48	219.9	-223.6	319.4	307.6	11.77	27.144					
2,400.0	2,400.0	2,363.6	2,333.4	5.3	7.7	-43.90	239.3	-230.3	338.4	325.9	12.42	27.241					
2,500.0	2,500.0	2,461.4	2,429.0	5.5	8.1	-42.49	258.7	-237.0	357.6	344.5	13.08	27.340					
2,600.0	2,600.0	2,559.2	2,524.6	5.7	8.5	-41.23	278.1	-243.7	376.9	363.2	13.74	27.440					
2,700.0	2,700.0	2,657.0	2,620.2	6.0	9.0	-40.08	297.5	-250.3	396.5	382.1	14.40	27.540					
2,800.0	2,800.0	2,754.7	2,715.8	6.2	9.4	-39.05	316.9	-257.0	416.2	401.1	15.06	27.639					
2,900.0	2,900.0	2,852.5	2,811.4	6.4	9.8	-38.10	336.2	-263.7	436.0	420.3	15.72	27.736					
3,000.0	3,000.0	2,950.3	2,907.0	6.6	10.3	-37.24	355.6	-270.4	455.9	439.5	16.38	27.830					
3,100.0	3,100.0	3,048.2	3,002.7	6.8	10.7	-45.28	375.0	-277.0	474.7	460.2	14.52	32.693					
3,200.0	3,199.8	3,146.4	3,098.7	7.0	11.1	-46.20	394.5	-283.7	491.2	476.3	14.97	32.808					
3,300.0	3,299.5	3,244.6	3,194.8	7.3	11.6	-47.37	414.0	-290.4	505.6	490.2	15.41	32.803					
3,400.0	3,398.7	3,342.8	3,290.8	7.5	12.0	-48.76	433.5	-297.2	518.0	502.2	15.85	32.687					
3,500.0	3,497.5	3,440.9	3,386.7	7.7	12.4	-50.39	452.9	-303.8	528.6	512.3	16.28	32.465					
3,600.0	3,595.8	3,538.8	3,482.4	8.0	12.9	-52.27	472.3	-310.5	538.1	521.4	16.74	32.155					
3,700.0	3,694.1	3,636.6	3,578.1	8.2	13.3	-54.13	491.7	-317.2	548.2	530.9	17.21	31.850					
3,800.0	3,792.4	3,734.5	3,673.8	8.5	13.7	-55.93	511.1	-323.9	558.8	541.1	17.71	31.558					
3,900.0	3,890.8	3,832.4	3,769.5	8.8	14.2	-57.66	530.5	-330.6	569.9	551.7	18.22	31.278					
4,000.0	3,989.1	3,930.3	3,865.2	9.1	14.6	-59.32	550.0	-337.3	581.6	562.8	18.76	31.008					
4,100.0	4,087.4	4,028.1	3,960.9	9.4	15.1	-60.92	569.4	-343.9	593.7	574.4	19.31	30.747					
4,200.0	4,185.7	4,126.0	4,056.6	9.7	15.5	-62.46	588.8	-350.6	606.3	586.4	19.88	30.494					
4,300.0	4,284.0	4,223.9	4,152.3	10.1	15.9	-63.93	608.2	-357.3	619.3	598.8	20.47	30.250					
4,400.0	4,382.3	4,321.8	4,248.0	10.4	16.4	-65.34	627.6	-364.0	632.7	611.6	21.08	30.014					
4,500.0	4,480.7	4,419.7	4,343.7	10.7	16.8	-66.70	647.0	-370.7	646.5	624.8	21.70	29.788					
4,600.0	4,579.0	4,517.5	4,439.4	11.1	17.3	-68.00	666.4	-377.3	660.6	638.3	22.34	29.569					
4,700.0	4,677.3	4,615.4	4,535.1	11.4	17.7	-69.25	685.8	-384.0	675.1	652.1	22.99	29.360					
4,800.0	4,775.6	4,713.3	4,630.8	11.8	18.1	-70.44	705.2	-390.7	689.8	666.2	23.66	29.160					
4,900.0	4,873.9	4,811.2	4,726.5	12.1	18.6	-71.58	724.6	-397.4	704.9	680.5	24.33	28.968					
5,000.0	4,972.2	4,909.0	4,822.2	12.5	19.0	-72.68	744.0	-404.1	720.2	695.2	25.02	28.786					

CC - Min centre to center distance or convergent point, SF - min separation factor, ES - min ellipse separation

<b>Company:</b>	Synergy Resources	<b>Local Co-ordinate Reference:</b>	Well SRC Union 5AHZN
<b>Project:</b>	SEC.5-T2N-R68W	<b>TVD Reference:</b>	WELL @ 4978.0ft (RKB - 13')
<b>Reference Site:</b>	SRC Union Pad Sec.5-T2N-R68W	<b>MD Reference:</b>	WELL @ 4978.0ft (RKB - 13')
<b>Site Error:</b>	0.0ft	<b>North Reference:</b>	True
<b>Reference Well:</b>	SRC Union 5AHZN	<b>Survey Calculation Method:</b>	Minimum Curvature
<b>Well Error:</b>	0.0ft	<b>Output errors are at</b>	2.00 sigma
<b>Reference Wellbore</b>	Wellbore #1	<b>Database:</b>	Landmark
<b>Reference Design:</b>	Plan #2 (4-08-13)	<b>Offset TVD Reference:</b>	Offset Datum

Offset Design												Offset Site Error:	0.0 ft
Survey Program: 0-MWD												Offset Well Error:	0.0 ft
Reference		Offset		Semi Major Axis			Distance						Warning
Measured Depth (ft)	Vertical Depth (ft)	Measured Depth (ft)	Vertical Depth (ft)	Reference (ft)	Offset (ft)	Highside Toolface (°)	Offset Wellbore Centre +N/-S (ft)	+E/-W (ft)	Between Centres (ft)	Between Ellipses (ft)	Minimum Separation (ft)	Separation Factor	
5,100.0	5,070.6	5,006.9	4,917.9	12.9	19.5	73.73	763.5	-410.7	735.7	710.0	25.71	28.612	
5,200.0	5,168.9	5,104.8	5,013.6	13.2	19.9	74.74	782.9	-417.4	751.5	725.1	26.42	28.446	
5,300.0	5,267.2	5,202.7	5,109.3	13.6	20.3	75.71	802.3	-424.1	767.6	740.4	27.13	28.289	
5,400.0	5,365.5	5,300.6	5,205.0	14.0	20.8	76.64	821.7	-430.8	783.8	755.9	27.85	28.141	
5,500.0	5,463.8	5,398.4	5,300.7	14.4	21.2	77.53	841.1	-437.5	800.2	771.6	28.58	28.000	
5,600.0	5,562.1	5,496.3	5,396.4	14.7	21.6	78.39	860.5	-444.2	816.8	787.5	29.31	27.866	
5,700.0	5,660.4	5,594.2	5,492.1	15.1	22.1	79.21	879.9	-450.8	833.6	803.6	30.05	27.740	
5,800.0	5,758.8	5,692.1	5,587.8	15.5	22.5	80.00	899.3	-457.5	850.6	819.8	30.79	27.621	
5,900.0	5,857.3	5,790.0	5,683.6	15.8	23.0	80.97	918.7	-464.2	867.8	836.3	31.51	27.544	
6,000.0	5,956.3	5,888.4	5,779.7	16.1	23.4	81.76	938.2	-470.9	885.7	853.6	32.13	27.568	
6,100.0	6,055.8	6,027.9	5,916.8	16.3	23.9	82.44	962.7	-479.3	901.9	869.2	32.74	27.547	
6,200.0	6,155.6	6,169.2	6,056.8	16.5	24.2	82.86	981.1	-485.7	914.0	880.7	33.27	27.471	
6,300.0	6,255.5	6,311.8	6,198.8	16.7	24.5	83.04	992.9	-489.7	921.8	888.1	33.72	27.342	
6,400.0	6,355.5	6,455.1	6,342.0	16.9	24.8	1.14	998.1	-491.5	925.4	887.5	37.92	24.405	
6,500.0	6,455.5	6,566.6	6,453.5	17.1	24.9	1.14	998.4	-491.6	925.5	887.3	38.27	24.186	
6,600.0	6,555.2	6,663.9	6,550.6	17.2	25.0	-89.14	998.4	-486.7	925.6	890.9	34.71	26.668	
6,700.0	6,652.2	6,760.4	6,644.4	17.2	25.0	-89.20	998.4	-464.7	925.7	891.0	34.73	26.651	
6,800.0	6,742.7	6,857.1	6,732.8	17.1	25.0	-89.29	998.5	-425.7	925.9	891.3	34.62	26.742	
6,900.0	6,823.6	6,954.3	6,812.7	17.0	24.9	-89.41	998.6	-370.8	926.2	891.7	34.53	26.826	
7,000.0	6,891.8	7,051.9	6,881.4	17.1	24.8	-89.54	998.7	-301.6	926.6	892.0	34.65	26.740	
7,100.0	6,944.9	7,150.0	6,936.2	17.4	24.7	-89.69	998.8	-220.5	927.1	891.9	35.24	26.307	
7,200.0	6,980.8	7,249.0	6,975.2	18.0	24.6	-89.86	999.0	-129.6	927.7	891.2	36.48	25.429	
7,300.0	6,998.3	7,348.5	6,996.3	19.0	24.6	-90.03	999.2	-32.5	928.3	889.9	38.41	24.165	
7,400.0	7,000.0	7,448.5	7,000.0	20.2	24.6	-90.12	999.3	67.3	928.8	887.9	40.96	22.675	
7,500.0	7,000.0	7,548.5	7,000.0	21.8	25.0	-90.12	999.5	167.3	929.4	885.3	44.06	21.094	
7,600.0	7,000.0	7,648.5	7,000.0	23.6	26.0	-90.12	999.7	267.3	929.9	882.3	47.61	19.531	
7,700.0	7,000.0	7,748.5	7,000.0	25.6	27.5	-90.12	999.9	367.3	930.4	878.8	51.53	18.056	
7,800.0	7,000.0	7,848.5	7,000.0	27.7	29.4	-90.12	1,000.1	467.3	930.9	875.1	55.74	16.701	
7,900.0	7,000.0	7,948.5	7,000.0	29.9	31.5	-90.12	1,000.3	567.3	931.4	871.2	60.18	15.478	
8,000.0	7,000.0	8,048.5	7,000.0	32.2	33.7	-90.12	1,000.4	667.3	931.9	867.1	64.80	14.382	
8,100.0	7,000.0	8,148.5	7,000.0	34.6	36.0	-90.12	1,000.6	767.3	932.4	862.9	69.56	13.404	
8,200.0	7,000.0	8,248.5	7,000.0	37.1	38.4	-90.12	1,000.8	867.3	932.9	858.5	74.45	12.532	
8,300.0	7,000.0	8,348.5	7,000.0	39.6	40.8	-90.12	1,001.0	967.3	933.4	854.0	79.43	11.752	
8,400.0	7,000.0	8,448.5	7,000.0	42.1	43.3	-90.12	1,001.2	1,067.3	933.9	849.5	84.48	11.055	
8,500.0	7,000.0	8,548.5	7,000.0	44.7	45.8	-90.12	1,001.4	1,167.3	934.5	844.8	89.61	10.428	
8,600.0	7,000.0	8,648.5	7,000.0	47.3	48.3	-90.12	1,001.6	1,267.3	935.0	840.2	94.79	9.864	
8,700.0	7,000.0	8,748.5	7,000.0	49.9	50.9	-90.12	1,001.7	1,367.3	935.5	835.5	100.01	9.354	
8,800.0	7,000.0	8,848.5	7,000.0	52.5	53.5	-90.12	1,001.9	1,467.3	936.0	830.7	105.28	8.891	
8,900.0	7,000.0	8,948.5	7,000.0	55.2	56.1	-90.12	1,002.1	1,567.3	936.5	825.9	110.58	8.469	
9,000.0	7,000.0	9,048.5	7,000.0	57.9	58.8	-90.12	1,002.3	1,667.3	937.0	821.1	115.91	8.084	
9,100.0	7,000.0	9,148.5	7,000.0	60.5	61.4	-90.12	1,002.5	1,767.3	937.5	816.3	121.26	7.732	
9,200.0	7,000.0	9,248.5	7,000.0	63.2	64.1	-90.12	1,002.7	1,867.3	938.0	811.4	126.63	7.407	
9,300.0	7,000.0	9,348.5	7,000.0	65.9	66.8	-90.12	1,002.9	1,967.3	938.5	806.5	132.03	7.109	
9,400.0	7,000.0	9,448.5	7,000.0	68.6	69.4	-90.12	1,003.0	2,067.3	939.1	801.6	137.44	6.832	
9,500.0	7,000.0	9,548.5	7,000.0	71.4	72.1	-90.12	1,003.2	2,167.3	939.6	796.7	142.87	6.576	
9,600.0	7,000.0	9,648.5	7,000.0	74.1	74.8	-90.12	1,003.4	2,267.3	940.1	791.8	148.31	6.339	
9,700.0	7,000.0	9,748.5	7,000.0	76.8	77.5	-90.12	1,003.6	2,367.3	940.6	786.8	153.76	6.117	
9,800.0	7,000.0	9,848.5	7,000.0	79.5	80.3	-90.12	1,003.8	2,467.3	941.1	781.9	159.23	5.910	
9,900.0	7,000.0	9,948.5	7,000.0	82.3	83.0	-90.12	1,004.0	2,567.3	941.6	776.9	164.70	5.717	
10,000.0	7,000.0	10,048.5	7,000.0	85.0	85.7	-90.12	1,004.2	2,667.3	942.1	771.9	170.18	5.536	
10,100.0	7,000.0	10,148.5	7,000.0	87.8	88.4	-90.12	1,004.3	2,767.3	942.6	767.0	175.67	5.366	
10,200.0	7,000.0	10,248.5	7,000.0	90.5	91.2	-90.12	1,004.5	2,867.3	943.1	762.0	181.17	5.206	

CC - Min centre to center distance or convergent point, SF - min separation factor, ES - min ellipse separation

<b>Company:</b>	Synergy Resources	<b>Local Co-ordinate Reference:</b>	Well SRC Union 5AHZN
<b>Project:</b>	SEC.5-T2N-R68W	<b>TVD Reference:</b>	WELL @ 4978.0ft (RKB - 13')
<b>Reference Site:</b>	SRC Union Pad Sec.5-T2N-R68W	<b>MD Reference:</b>	WELL @ 4978.0ft (RKB - 13')
<b>Site Error:</b>	0.0ft	<b>North Reference:</b>	True
<b>Reference Well:</b>	SRC Union 5AHZN	<b>Survey Calculation Method:</b>	Minimum Curvature
<b>Well Error:</b>	0.0ft	<b>Output errors are at</b>	2.00 sigma
<b>Reference Wellbore</b>	Wellbore #1	<b>Database:</b>	Landmark
<b>Reference Design:</b>	Plan #2 (4-08-13)	<b>Offset TVD Reference:</b>	Offset Datum

<b>Offset Design</b> SRC Union Pad Sec.5-T2N-R68W - SRC Union 11HZN - Wellbore #1 - Plan #2 (4-08-13)												<b>Offset Site Error:</b>	0.0 ft
Survey Program: 0-MWD												<b>Offset Well Error:</b>	0.0 ft
Reference		Offset		Semi Major Axis			Distance						
Measured Depth (ft)	Vertical Depth (ft)	Measured Depth (ft)	Vertical Depth (ft)	Reference (ft)	Offset (ft)	Highside Toolface (°)	Offset Wellbore Centre +N/-S (ft)	+E/-W (ft)	Between Centres (ft)	Between Ellipses (ft)	Minimum Separation (ft)	Separation Factor	Warning
10,300.0	7,000.0	10,348.5	7,000.0	93.3	93.9	-90.12	1,004.7	2,967.3	943.6	757.0	186.67	5.055	
10,400.0	7,000.0	10,448.5	7,000.0	96.0	96.7	-90.12	1,004.9	3,067.3	944.2	752.0	192.18	4.913	
10,500.0	7,000.0	10,548.5	7,000.0	98.8	99.4	-90.12	1,005.1	3,167.3	944.7	747.0	197.70	4.778	
10,600.0	7,000.0	10,648.5	7,000.0	101.6	102.1	-90.12	1,005.3	3,267.3	945.2	742.0	203.22	4.651	
10,700.0	7,000.0	10,748.5	7,000.0	104.3	104.9	-90.12	1,005.4	3,367.3	945.7	736.9	208.75	4.530	
10,800.0	7,000.0	10,848.5	7,000.0	107.1	107.7	-90.12	1,005.6	3,467.3	946.2	731.9	214.28	4.416	
10,900.0	7,000.0	10,948.5	7,000.0	109.9	110.4	-90.12	1,005.8	3,567.3	946.7	726.9	219.81	4.307	
11,000.0	7,000.0	11,048.5	7,000.0	112.6	113.2	-90.12	1,006.0	3,667.3	947.2	721.9	225.35	4.203	
11,100.0	7,000.0	11,148.5	7,000.0	115.4	115.9	-90.12	1,006.2	3,767.3	947.7	716.8	230.89	4.105	
11,200.0	7,000.0	11,248.5	7,000.0	118.2	118.7	-90.12	1,006.4	3,867.3	948.2	711.8	236.43	4.011	
11,300.0	7,000.0	11,348.5	7,000.0	120.9	121.5	-90.12	1,006.6	3,967.3	948.8	706.8	241.98	3.921	
11,400.0	7,000.0	11,448.5	7,000.0	123.7	124.2	-90.12	1,006.7	4,067.3	949.3	701.7	247.53	3.835	
11,500.0	7,000.0	11,548.5	7,000.0	126.5	127.0	-90.12	1,006.9	4,167.3	949.8	696.7	253.08	3.753	
11,600.0	7,000.0	11,648.4	7,000.0	129.3	129.8	-90.12	1,007.1	4,267.3	950.3	691.6	258.64	3.674	
11,700.0	7,000.0	11,748.4	7,000.0	132.1	132.5	-90.12	1,007.3	4,367.3	950.8	686.6	264.19	3.599	
11,703.2	7,000.0	11,751.7	7,000.0	132.1	132.6	-90.12	1,007.3	4,370.5	950.8	686.4	264.37	3.596 SF	

<b>Company:</b>	Synergy Resources	<b>Local Co-ordinate Reference:</b>	Well SRC Union 5AHZN
<b>Project:</b>	SEC.5-T2N-R68W	<b>TVD Reference:</b>	WELL @ 4978.0ft (RKB - 13')
<b>Reference Site:</b>	SRC Union Pad Sec.5-T2N-R68W	<b>MD Reference:</b>	WELL @ 4978.0ft (RKB - 13')
<b>Site Error:</b>	0.0ft	<b>North Reference:</b>	True
<b>Reference Well:</b>	SRC Union 5AHZN	<b>Survey Calculation Method:</b>	Minimum Curvature
<b>Well Error:</b>	0.0ft	<b>Output errors are at</b>	2.00 sigma
<b>Reference Wellbore</b>	Wellbore #1	<b>Database:</b>	Landmark
<b>Reference Design:</b>	Plan #2 (4-08-13)	<b>Offset TVD Reference:</b>	Offset Datum

Offset Design													Offset Site Error:	0.0 ft
Survey Program: 0-MWD													Offset Well Error:	0.0 ft
Reference		Offset		Semi Major Axis			Distance							Warning
Measured Depth (ft)	Vertical Depth (ft)	Measured Depth (ft)	Vertical Depth (ft)	Reference (ft)	Offset (ft)	Highside Toolface (°)	Offset Wellbore Centre +N/-S (ft)	+E/-W (ft)	Between Centres (ft)	Between Ellipses (ft)	Minimum Separation (ft)	Separation Factor		
0.0	0.0	0.0	0.0	0.0	0.0	-111.25	-7.3	-18.7	20.1					
100.0	100.0	100.0	100.0	0.1	0.1	-111.25	-7.3	-18.7	20.1	19.9	0.22	89.383		
200.0	200.0	200.0	200.0	0.3	0.3	-111.25	-7.3	-18.7	20.1	19.4	0.67	29.794		
300.0	300.0	300.0	300.0	0.6	0.6	-111.25	-7.3	-18.7	20.1	19.0	1.12	17.877 CC		
400.0	400.0	399.9	399.9	0.8	0.8	-113.53	-8.2	-18.7	20.4	18.9	1.55	13.196 ES		
500.0	500.0	499.7	499.6	1.0	1.0	-119.89	-10.8	-18.7	21.6	19.6	1.96	11.000		
600.0	600.0	599.3	599.2	1.2	1.2	-128.88	-15.1	-18.7	24.1	21.7	2.40	10.048		
700.0	700.0	699.2	698.9	1.5	1.4	-137.35	-20.3	-18.7	27.7	24.8	2.84	9.740		
800.0	800.0	799.1	798.7	1.7	1.6	-143.77	-25.6	-18.7	31.7	28.4	3.29	9.631		
900.0	900.0	898.9	898.4	1.9	1.8	-148.69	-30.8	-18.7	36.1	32.3	3.75	9.614		
1,000.0	1,000.0	999.2	998.6	2.1	2.1	-153.47	-35.8	-17.9	40.1	35.9	4.21	9.529		
1,100.0	1,100.0	1,099.5	1,098.7	2.4	2.3	-159.24	-40.5	-15.3	43.3	38.7	4.65	9.306		
1,200.0	1,200.0	1,199.8	1,198.8	2.6	2.5	-166.06	-44.7	-11.1	46.1	41.0	5.11	9.025		
1,300.0	1,300.0	1,299.8	1,298.6	2.8	2.8	-173.94	-48.5	-5.2	48.8	43.3	5.56	8.776		
1,400.0	1,400.0	1,399.7	1,398.1	3.0	3.0	-177.28	-51.9	2.5	52.0	46.0	6.03	8.632		
1,500.0	1,500.0	1,499.3	1,497.3	3.3	3.2	-167.93	-54.9	11.7	56.2	49.7	6.50	8.651		
1,600.0	1,600.0	1,598.8	1,596.2	3.5	3.5	-159.35	-57.7	21.8	61.8	54.8	6.98	8.853		
1,700.0	1,700.0	1,698.2	1,695.1	3.7	3.8	-152.30	-60.5	31.8	68.5	61.1	7.47	9.175		
1,800.0	1,800.0	1,797.7	1,794.0	3.9	4.0	-146.58	-63.3	41.8	76.1	68.1	7.96	9.558		
1,900.0	1,900.0	1,897.1	1,892.9	4.2	4.3	-141.93	-66.1	51.8	84.3	75.8	8.46	9.964		
2,000.0	2,000.0	1,996.6	1,991.8	4.4	4.6	-138.12	-68.9	61.8	93.0	84.0	8.96	10.372		
2,100.0	2,100.0	2,096.0	2,090.7	4.6	4.9	-134.96	-71.7	71.8	101.9	92.5	9.46	10.771		
2,200.0	2,200.0	2,195.5	2,189.6	4.8	5.1	-132.33	-74.5	81.8	111.2	101.2	9.97	11.152		
2,300.0	2,300.0	2,295.0	2,288.5	5.1	5.4	-130.10	-77.3	91.9	120.6	110.1	10.48	11.514		
2,400.0	2,400.0	2,394.4	2,387.4	5.3	5.7	-128.19	-80.1	101.9	130.2	119.2	10.98	11.855		
2,500.0	2,500.0	2,493.9	2,486.3	5.5	6.0	-126.55	-82.9	111.9	139.9	128.4	11.49	12.175		
2,600.0	2,600.0	2,593.3	2,585.2	5.7	6.3	-125.13	-85.7	121.9	149.8	137.8	12.01	12.475		
2,700.0	2,700.0	2,692.8	2,684.1	6.0	6.6	-123.87	-88.6	131.9	159.7	147.1	12.52	12.756		
2,800.0	2,800.0	2,792.2	2,783.0	6.2	6.9	-122.77	-91.4	141.9	169.6	156.6	13.03	13.019		
2,900.0	2,900.0	2,891.7	2,882.0	6.4	7.1	-121.79	-94.2	151.9	179.7	166.1	13.54	13.266		
3,000.0	3,000.0	2,991.1	2,980.9	6.6	7.4	-120.91	-97.0	161.9	189.7	175.7	14.06	13.497		
3,100.0	3,100.0	3,090.4	3,079.6	6.8	7.7	-118.12	-99.8	171.9	201.4	187.9	13.57	14.846		
3,200.0	3,199.8	3,189.1	3,177.8	7.0	8.0	-115.21	-102.5	181.9	216.4	202.5	13.97	15.497		
3,300.0	3,299.5	3,287.3	3,275.4	7.3	8.3	-110.42	-105.3	191.8	234.8	220.4	14.35	16.361		
3,400.0	3,398.7	3,384.7	3,372.3	7.5	8.6	-106.67	-108.1	201.6	256.4	241.7	14.72	17.426		
3,500.0	3,497.5	3,481.3	3,468.4	7.7	8.9	-102.91	-110.8	211.3	281.5	266.4	15.07	18.683		
3,600.0	3,595.8	3,577.3	3,563.8	8.0	9.2	-100.16	-113.5	221.0	309.0	293.6	15.47	19.975		
3,700.0	3,694.1	3,673.1	3,659.1	8.2	9.4	-100.26	-116.2	230.6	336.8	320.9	15.90	21.179		
3,800.0	3,792.4	3,769.0	3,754.5	8.5	9.7	-100.18	-118.9	240.3	364.7	348.3	16.34	22.321		
3,900.0	3,890.8	3,864.9	3,849.9	8.8	10.0	-100.98	-121.6	249.9	392.6	375.8	16.78	23.404		
4,000.0	3,989.1	3,964.3	3,948.7	9.1	10.3	-100.69	-124.3	259.7	420.4	403.2	17.21	24.425		
4,100.0	4,087.4	4,068.5	4,052.6	9.4	10.5	-100.32	-126.8	268.5	446.8	429.2	17.64	25.335		
4,200.0	4,185.7	4,173.8	4,157.6	9.7	10.7	-100.87	-128.7	275.5	471.5	453.4	18.05	26.114		
4,300.0	4,284.0	4,280.0	4,263.7	10.1	10.9	-100.35	-130.2	280.6	494.4	475.9	18.48	26.758		
4,400.0	4,382.3	4,387.1	4,370.7	10.4	11.1	-100.78	-131.1	283.9	515.5	496.6	18.90	27.275		
4,500.0	4,480.7	4,495.1	4,478.7	10.7	11.3	-100.17	-131.5	285.3	534.8	515.4	19.33	27.672		
4,600.0	4,579.0	4,595.4	4,579.0	11.1	11.5	-100.50	-131.5	285.3	552.8	533.1	19.75	27.986		
4,700.0	4,677.3	4,693.7	4,677.3	11.4	11.6	-100.80	-131.5	285.3	570.9	550.7	20.18	28.291		
4,800.0	4,775.6	4,792.0	4,775.6	11.8	11.8	-101.09	-131.5	285.3	588.9	568.3	20.60	28.581		
4,900.0	4,873.9	4,890.3	4,873.9	12.1	12.0	-101.35	-131.5	285.3	607.0	585.9	21.03	28.857		
5,000.0	4,972.2	4,988.7	4,972.2	12.5	12.2	-101.61	-131.5	285.3	625.1	603.6	21.47	29.120		
5,100.0	5,070.6	5,087.0	5,070.6	12.9	12.3	-101.84	-131.5	285.3	643.1	621.2	21.90	29.370		

CC - Min centre to center distance or convergent point, SF - min separation factor, ES - min ellipse separation

SRC Union Pad Sec.5-T2N-R68W - SRC Union 12-5D - Wellbore #1 - Plan #1 (1-03-13)													Offset Site Error: 0.0 ft	
Survey Program: 0-MWD													Offset Well Error: 0.0 ft	
Reference		Offset		Semi Major Axis			Distance							Warning
Measured Depth	Vertical Depth	Measured Depth	Vertical Depth	Reference	Offset	Highside Toolface	Offset Wellbore Centre		Between Centres	Between Ellipses	Minimum Separation	Separation Factor		
(ft)	(ft)	(ft)	(ft)	(ft)	(ft)	(°)	+N-S (ft)	+E-W (ft)	(ft)	(ft)	(ft)			
5,200.0	5,168.9	5,185.3	5,168.9	13.2	12.5	-172.07	-131.5	285.3	661.2	638.9	22.33	29.608		
5,300.0	5,267.2	5,283.6	5,267.2	13.6	12.7	-172.28	-131.5	285.3	679.3	656.6	22.77	29.836		
5,400.0	5,365.5	5,381.9	5,365.5	14.0	12.9	-172.48	-131.5	285.3	697.5	674.3	23.21	30.053		
5,500.0	5,463.8	5,480.2	5,463.8	14.4	13.1	-172.67	-131.5	285.3	715.6	691.9	23.65	30.261		
5,600.0	5,562.1	5,578.6	5,562.1	14.7	13.2	-172.86	-131.5	285.3	733.7	709.6	24.09	30.460		
5,700.0	5,660.4	5,676.9	5,660.4	15.1	13.4	-173.03	-131.5	285.3	751.9	727.3	24.53	30.650		
5,800.0	5,758.8	5,775.2	5,758.8	15.5	13.6	-173.19	-131.5	285.3	770.0	745.0	24.97	30.832		
5,900.0	5,857.3	5,873.7	5,857.3	15.8	13.8	-173.37	-131.5	285.3	787.0	761.5	25.49	30.872		
6,000.0	5,956.3	5,972.8	5,956.3	16.1	14.0	-173.52	-131.5	285.3	800.6	774.7	25.99	30.811		
6,100.0	6,055.8	6,072.2	6,055.8	16.3	14.2	-173.62	-131.5	285.3	810.8	784.4	26.45	30.653		
6,200.0	6,155.6	6,172.0	6,155.6	16.5	14.4	-173.69	-131.5	285.3	817.6	790.7	26.89	30.406		
6,300.0	6,255.5	6,271.9	6,255.5	16.7	14.6	-173.72	-131.5	285.3	820.9	793.6	27.30	30.072		
6,400.0	6,355.5	6,371.9	6,355.5	16.9	14.8	-104.42	-131.5	285.3	821.2	789.6	31.56	26.020		
6,500.0	6,455.5	6,471.9	6,455.5	17.1	15.0	-104.42	-131.5	285.3	821.2	789.3	31.94	25.713		
6,600.0	6,555.2	6,571.7	6,555.2	17.2	15.1	-14.41	-131.5	285.3	815.8	787.5	28.24	28.889		
6,700.0	6,652.2	6,668.6	6,652.2	17.2	15.3	-15.53	-131.5	285.3	792.6	765.0	27.61	28.707		
6,800.0	6,742.7	6,759.1	6,742.7	17.1	15.5	-17.83	-131.5	285.3	752.0	725.6	26.37	28.520		
6,900.0	6,823.6	6,840.0	6,823.6	17.0	15.7	-21.91	-131.5	285.3	695.7	670.8	24.90	27.940		
7,000.0	6,891.8	6,908.2	6,891.8	17.1	15.8	-29.04	-131.5	285.3	626.3	602.2	24.12	25.964		
7,100.0	6,944.9	6,961.3	6,944.9	17.4	15.9	-41.43	-131.5	285.3	546.8	521.1	25.73	21.255		
7,200.0	6,980.8	6,997.2	6,980.8	18.0	16.0	-60.93	-131.5	285.3	461.5	431.0	30.50	15.130		
7,300.0	6,998.3	7,014.7	6,998.3	19.0	16.0	-82.79	-131.5	285.3	375.4	340.8	34.60	10.850		
7,400.0	7,000.0	7,016.4	7,000.0	20.2	16.0	-90.00	-131.5	285.3	295.9	259.8	36.12	8.194		
7,500.0	7,000.0	7,016.4	7,000.0	21.8	16.0	-90.00	-131.5	285.3	232.8	195.1	37.68	6.179		
7,600.0	7,000.0	7,016.4	7,000.0	23.6	16.0	-90.00	-131.5	285.3	202.0	162.5	39.47	5.118		
7,616.9	7,000.0	7,016.4	7,000.0	23.9	16.0	-90.00	-131.5	285.3	201.3	161.5	39.80	5.057 SF		
7,700.0	7,000.0	7,016.4	7,000.0	25.6	16.0	-90.00	-131.5	285.3	217.8	176.3	41.44	5.255		
7,800.0	7,000.0	7,016.4	7,000.0	27.7	16.0	-90.00	-131.5	285.3	272.1	228.5	43.56	6.247		
7,900.0	7,000.0	7,016.4	7,000.0	29.9	16.0	-90.00	-131.5	285.3	347.3	301.6	45.79	7.586		
8,000.0	7,000.0	7,016.4	7,000.0	32.2	16.0	-90.00	-131.5	285.3	432.7	384.6	48.11	8.995		
8,100.0	7,000.0	7,016.4	7,000.0	34.6	16.0	-90.00	-131.5	285.3	523.3	472.8	50.50	10.363		
8,200.0	7,000.0	7,016.4	7,000.0	37.1	16.0	-90.00	-131.5	285.3	616.8	563.9	52.95	11.649		
8,300.0	7,000.0	7,016.4	7,000.0	39.6	16.0	-90.00	-131.5	285.3	712.1	656.7	55.45	12.843		
8,400.0	7,000.0	7,016.4	7,000.0	42.1	16.0	-90.00	-131.5	285.3	808.5	750.5	57.98	13.944		
8,500.0	7,000.0	7,016.4	7,000.0	44.7	16.0	-90.00	-131.5	285.3	905.7	845.2	60.55	14.958		

<b>Company:</b>	Synergy Resources	<b>Local Co-ordinate Reference:</b>	Well SRC Union 5AHZN
<b>Project:</b>	SEC.5-T2N-R68W	<b>TVD Reference:</b>	WELL @ 4978.0ft (RKB - 13')
<b>Reference Site:</b>	SRC Union Pad Sec.5-T2N-R68W	<b>MD Reference:</b>	WELL @ 4978.0ft (RKB - 13')
<b>Site Error:</b>	0.0ft	<b>North Reference:</b>	True
<b>Reference Well:</b>	SRC Union 5AHZN	<b>Survey Calculation Method:</b>	Minimum Curvature
<b>Well Error:</b>	0.0ft	<b>Output errors are at</b>	2.00 sigma
<b>Reference Wellbore</b>	Wellbore #1	<b>Database:</b>	Landmark
<b>Reference Design:</b>	Plan #2 (4-08-13)	<b>Offset TVD Reference:</b>	Offset Datum

Offset Design													Offset Site Error:	0.0 ft
Survey Program: 0-MWD													Offset Well Error:	0.0 ft
Reference		Offset		Semi Major Axis			Distance							Warning
Measured Depth (ft)	Vertical Depth (ft)	Measured Depth (ft)	Vertical Depth (ft)	Reference (ft)	Offset (ft)	Highside Toolface (°)	Offset Wellbore Centre +N/-S (ft)	+E/-W (ft)	Between Centres (ft)	Between Ellipses (ft)	Minimum Separation (ft)	Separation Factor		
0.0	0.0	0.0	0.0	0.0	0.0	-111.15	-43.4	-112.1	120.2					
100.0	100.0	99.0	99.0	0.1	0.1	-111.15	-43.4	-112.1	120.2	119.9	0.22	537.277		
200.0	200.0	199.0	199.0	0.3	0.3	-111.15	-43.4	-112.1	120.2	119.5	0.67	178.794		
300.0	300.0	299.0	299.0	0.6	0.6	-111.15	-43.4	-112.1	120.2	119.0	1.12	107.133		
400.0	400.0	399.0	399.0	0.8	0.8	-111.15	-43.4	-112.1	120.2	118.6	1.57	76.480		
500.0	500.0	499.0	499.0	1.0	1.0	-111.15	-43.4	-112.1	120.2	118.1	2.02	59.466		
600.0	600.0	599.0	599.0	1.2	1.2	-111.15	-43.4	-112.1	120.2	117.7	2.47	48.644		
700.0	700.0	699.0	699.0	1.5	1.5	-111.15	-43.4	-112.1	120.2	117.2	2.92	41.154		
800.0	800.0	799.0	799.0	1.7	1.7	-111.15	-43.4	-112.1	120.2	116.8	3.37	35.663		
900.0	900.0	899.0	899.0	1.9	1.9	-111.15	-43.4	-112.1	120.2	116.3	3.82	31.465		
1,000.0	1,000.0	999.0	999.0	2.1	2.1	-111.15	-43.4	-112.1	120.2	115.9	4.27	28.151		
1,100.0	1,100.0	1,099.0	1,099.0	2.4	2.4	-111.15	-43.4	-112.1	120.2	115.4	4.72	25.469		
1,200.0	1,200.0	1,199.0	1,199.0	2.6	2.6	-111.15	-43.4	-112.1	120.2	115.0	5.17	23.253		
1,300.0	1,300.0	1,299.0	1,299.0	2.8	2.8	-111.15	-43.4	-112.1	120.2	114.5	5.62	21.392		
1,400.0	1,400.0	1,399.0	1,399.0	3.0	3.0	-111.15	-43.4	-112.1	120.2	114.1	6.07	19.807		
1,500.0	1,500.0	1,499.0	1,499.0	3.3	3.3	-111.15	-43.4	-112.1	120.2	113.6	6.52	18.441 CC, ES		
1,600.0	1,600.0	1,595.2	1,595.2	3.5	3.5	-111.38	-44.4	-113.3	121.7	114.8	6.93	17.552		
1,700.0	1,700.0	1,691.1	1,691.0	3.7	3.6	-112.06	-47.4	-117.0	126.5	119.1	7.34	17.237		
1,800.0	1,800.0	1,786.6	1,786.1	3.9	3.8	-113.09	-52.5	-123.1	134.4	126.7	7.75	17.351		
1,900.0	1,900.0	1,881.5	1,880.3	4.2	4.0	-114.34	-59.5	-131.6	145.6	137.5	8.17	17.818		
2,000.0	2,000.0	1,978.9	1,976.8	4.4	4.2	-115.66	-68.3	-142.2	159.3	150.7	8.62	18.478		
2,100.0	2,100.0	2,077.9	2,074.8	4.6	4.5	-116.80	-77.4	-153.2	173.3	164.2	9.09	19.054		
2,200.0	2,200.0	2,176.9	2,172.7	4.8	4.7	-117.77	-86.4	-164.1	187.3	177.7	9.58	19.552		
2,300.0	2,300.0	2,275.9	2,270.7	5.1	5.0	-118.60	-95.4	-175.0	201.3	191.3	10.07	19.984		
2,400.0	2,400.0	2,374.8	2,368.6	5.3	5.3	-119.33	-104.5	-185.9	215.4	204.8	10.58	20.359		
2,500.0	2,500.0	2,473.8	2,466.6	5.5	5.6	-119.97	-113.5	-196.8	229.5	218.4	11.09	20.687		
2,600.0	2,600.0	2,572.8	2,564.5	5.7	5.9	-120.53	-122.5	-207.8	243.7	232.0	11.62	20.976		
2,700.0	2,700.0	2,671.7	2,662.5	6.0	6.2	-121.03	-131.6	-218.7	257.8	245.7	12.14	21.230		
2,800.0	2,800.0	2,770.7	2,760.4	6.2	6.5	-121.48	-140.6	-229.6	272.0	259.3	12.68	21.456		
2,900.0	2,900.0	2,869.7	2,858.4	6.4	6.8	-121.89	-149.7	-240.5	286.2	273.0	13.21	21.657		
3,000.0	3,000.0	2,968.6	2,956.3	6.6	7.1	-122.26	-158.7	-251.4	300.4	286.6	13.76	21.837		
3,100.0	3,100.0	3,067.8	3,054.4	6.8	7.4	-40.78	-167.7	-262.4	313.3	299.9	13.38	23.409		
3,200.0	3,199.8	3,167.1	3,152.7	7.0	7.8	-41.55	-176.8	-273.3	323.6	309.8	13.81	23.439		
3,300.0	3,299.5	3,266.5	3,251.1	7.3	8.1	-42.70	-185.9	-284.3	331.5	317.2	14.23	23.298		
3,400.0	3,398.7	3,365.9	3,349.5	7.5	8.4	-44.23	-195.0	-295.3	337.0	322.3	14.65	23.002		
3,500.0	3,497.5	3,465.2	3,447.7	7.7	8.8	-46.15	-204.0	-306.2	340.3	325.2	15.08	22.569		
3,600.0	3,595.8	3,564.2	3,545.8	8.0	9.1	-48.38	-213.1	-317.2	342.3	326.8	15.54	22.024		
3,700.0	3,694.1	3,663.3	3,643.8	8.2	9.4	-50.60	-222.1	-328.1	344.8	328.8	16.03	21.505		
3,800.0	3,792.4	3,762.4	3,741.9	8.5	9.8	-52.79	-231.2	-339.0	347.8	331.3	16.54	21.025		
3,900.0	3,890.8	3,861.4	3,839.9	8.8	10.1	-54.93	-240.2	-350.0	351.4	334.3	17.07	20.581		
4,000.0	3,989.1	3,960.5	3,937.9	9.1	10.4	-57.04	-249.3	-360.9	355.4	337.7	17.62	20.169		
4,100.0	4,087.4	4,059.5	4,036.0	9.4	10.8	-59.09	-258.3	-371.8	359.8	341.6	18.19	19.787		
4,200.0	4,185.7	4,158.6	4,134.0	9.7	11.1	-61.09	-267.3	-382.8	364.8	346.0	18.77	19.434		
4,300.0	4,284.0	4,257.7	4,232.1	10.1	11.5	-63.04	-276.4	-393.7	370.1	350.8	19.37	19.107		
4,400.0	4,382.3	4,356.7	4,330.1	10.4	11.8	-64.92	-285.4	-404.6	375.9	355.9	19.99	18.804		
4,500.0	4,480.7	4,455.8	4,428.2	10.7	12.1	-66.76	-294.5	-415.6	382.1	361.5	20.63	18.526		
4,600.0	4,579.0	4,554.9	4,526.2	11.1	12.5	-68.53	-303.5	-426.5	388.7	367.4	21.28	18.269		
4,700.0	4,677.3	4,653.9	4,624.2	11.4	12.8	-70.24	-312.6	-437.4	395.6	373.7	21.94	18.033		
4,800.0	4,775.6	4,753.0	4,722.3	11.8	13.2	-71.89	-321.6	-448.3	402.9	380.3	22.62	17.816		
4,900.0	4,873.9	4,852.0	4,820.3	12.1	13.5	-73.48	-330.7	-459.3	410.5	387.2	23.30	17.618		
5,000.0	4,972.2	4,951.1	4,918.4	12.5	13.9	-75.02	-339.7	-470.2	418.5	394.5	24.00	17.436		
5,100.0	5,070.6	5,050.2	5,016.4	12.9	14.2	-76.50	-348.8	-481.1	426.7	402.0	24.70	17.271		

CC - Min centre to center distance or convergent point, SF - min separation factor, ES - min ellipse separation

SRC Union Pad Sec.5-T2N-R68W - SRC Union 12HZC - Wellbore #1 - Plan #2 (4-08-13)													Offset Site Error:	0.0 ft
Survey Program: 0-MWD													Offset Well Error:	0.0 ft
Reference		Offset		Semi Major Axis			Distance							Warning
Measured Depth (ft)	Vertical Depth (ft)	Measured Depth (ft)	Vertical Depth (ft)	Reference (ft)	Offset (ft)	Highside Toolface (°)	Offset Wellbore Centre +N/-S (ft)	+E/-W (ft)	Between Centres (ft)	Between Ellipses (ft)	Minimum Separation (ft)	Separation Factor		
5,200.0	5,168.9	5,153.0	5,118.2	13.2	14.6	-77.98	-358.1	-492.4	435.0	409.6	25.42	17.111		
5,300.0	5,267.2	5,266.9	5,231.3	13.6	14.8	-79.78	-366.3	-502.3	441.3	415.1	26.16	16.870		
5,400.0	5,365.5	5,380.5	5,344.6	14.0	15.1	-81.84	-371.7	-508.8	444.6	417.7	26.89	16.536		
5,500.0	5,463.8	5,493.5	5,457.5	14.4	15.3	-84.20	-374.2	-511.8	445.2	417.6	27.61	16.122		
5,600.0	5,562.1	5,597.1	5,561.1	14.7	15.4	-86.61	-374.4	-512.1	443.9	415.6	28.32	15.676		
5,700.0	5,660.4	5,695.4	5,659.4	15.1	15.6	-88.92	-374.4	-512.1	443.2	414.2	29.01	15.280		
5,746.3	5,706.0	5,740.9	5,705.0	15.3	15.7	-90.00	-374.4	-512.1	443.1	413.8	29.32	15.112		
5,800.0	5,758.8	5,793.7	5,757.8	15.5	15.7	-91.25	-374.4	-512.1	443.2	413.6	29.69	14.931		
5,900.0	5,857.3	5,892.2	5,856.3	15.8	15.9	-93.44	-374.4	-512.1	443.9	413.6	30.31	14.648		
6,000.0	5,956.3	5,991.3	5,955.3	16.1	16.1	-95.20	-374.4	-512.1	445.0	414.2	30.83	14.435		
6,100.0	6,055.8	6,090.8	6,054.8	16.3	16.2	-96.53	-374.4	-512.1	446.0	414.8	31.30	14.253		
6,200.0	6,155.6	6,190.5	6,154.6	16.5	16.4	-97.41	-374.4	-512.1	446.9	415.2	31.72	14.090		
6,300.0	6,255.5	6,290.5	6,254.5	16.7	16.5	-97.84	-374.4	-512.1	447.3	415.2	32.09	13.939		
6,400.0	6,355.5	6,390.5	6,354.5	16.9	16.7	-179.74	-374.4	-512.1	447.4	418.2	29.17	15.338		
6,500.0	6,455.5	6,490.5	6,454.5	17.1	16.9	-179.74	-374.4	-512.1	447.4	417.8	29.56	15.134		
6,540.0	6,495.4	6,530.4	6,494.4	17.1	16.9	90.16	-374.4	-512.1	447.4	414.4	32.91	13.592		
6,600.0	6,555.2	6,590.2	6,554.2	17.2	17.0	90.72	-374.4	-512.1	447.4	414.3	33.08	13.526		
6,700.0	6,652.2	6,687.1	6,651.2	17.2	17.2	93.58	-374.4	-512.1	448.3	415.2	33.13	13.533		
6,800.0	6,742.7	6,777.7	6,741.7	17.1	17.4	97.87	-374.4	-512.1	453.1	420.1	32.98	13.737		
6,900.0	6,823.6	6,869.4	6,833.4	17.0	17.5	103.02	-374.4	-510.2	465.5	432.9	32.64	14.264		
7,000.0	6,891.8	6,985.5	6,947.1	17.1	17.6	108.94	-374.6	-487.5	485.1	453.1	32.01	15.152		
7,100.0	6,944.9	7,128.4	7,075.6	17.4	17.5	114.94	-375.1	-426.2	508.5	477.3	31.19	16.304		
7,200.0	6,980.8	7,310.1	7,207.0	18.0	17.4	120.57	-376.2	-302.1	530.8	500.2	30.58	17.360		
7,300.0	6,998.3	7,535.8	7,299.0	19.0	18.0	124.26	-377.9	-97.9	544.9	513.3	31.59	17.247		
7,400.0	7,000.0	7,699.5	7,310.0	20.2	19.9	124.66	-379.4	65.0	546.9	512.7	34.23	15.975		
7,500.0	7,000.0	7,799.5	7,310.0	21.8	21.6	124.62	-380.3	165.0	547.4	510.5	36.87	14.847		
7,600.0	7,000.0	7,899.5	7,310.0	23.6	23.4	124.59	-381.2	265.0	547.9	508.0	39.89	13.736		
7,700.0	7,000.0	7,999.5	7,310.0	25.6	25.5	124.55	-382.1	365.0	548.3	505.1	43.21	12.690		
7,800.0	7,000.0	8,099.5	7,310.0	27.7	27.6	124.52	-383.0	465.0	548.8	502.0	46.77	11.733		
7,900.0	7,000.0	8,199.5	7,310.0	29.9	29.9	124.49	-383.9	565.0	549.3	498.8	50.53	10.870		
8,000.0	7,000.0	8,299.5	7,310.0	32.2	32.3	124.45	-384.8	665.0	549.8	495.3	54.44	10.098		
8,100.0	7,000.0	8,399.5	7,310.0	34.6	34.7	124.42	-385.7	765.0	550.2	491.8	58.47	9.410		
8,200.0	7,000.0	8,499.5	7,310.0	37.1	37.2	124.38	-386.6	865.0	550.7	488.1	62.61	8.797		
8,300.0	7,000.0	8,599.5	7,310.0	39.6	39.7	124.35	-387.5	964.9	551.2	484.4	66.82	8.249		
8,400.0	7,000.0	8,699.5	7,310.0	42.1	42.3	124.32	-388.4	1,064.9	551.7	480.6	71.10	7.759		
8,500.0	7,000.0	8,799.5	7,310.0	44.7	44.9	124.28	-389.3	1,164.9	552.1	476.7	75.44	7.319		
8,600.0	7,000.0	8,899.5	7,310.0	47.3	47.5	124.25	-390.2	1,264.9	552.6	472.8	79.83	6.922		
8,700.0	7,000.0	8,999.5	7,310.0	49.9	50.1	124.21	-391.1	1,364.9	553.1	468.8	84.26	6.564		
8,800.0	7,000.0	9,099.5	7,310.0	52.5	52.7	124.18	-392.0	1,464.9	553.6	464.8	88.73	6.239		
8,900.0	7,000.0	9,199.5	7,310.0	55.2	55.4	124.15	-392.9	1,564.9	554.1	460.8	93.22	5.943		
9,000.0	7,000.0	9,299.5	7,310.0	57.9	58.1	124.11	-393.8	1,664.9	554.5	456.8	97.75	5.673		
9,100.0	7,000.0	9,399.5	7,310.0	60.5	60.8	124.08	-394.7	1,764.9	555.0	452.7	102.29	5.426		
9,200.0	7,000.0	9,499.4	7,310.0	63.2	63.5	124.05	-395.6	1,864.9	555.5	448.6	106.86	5.198		
9,300.0	7,000.0	9,599.4	7,310.0	65.9	66.2	124.01	-396.5	1,964.9	556.0	444.5	111.45	4.988		
9,400.0	7,000.0	9,699.4	7,310.0	68.6	68.9	123.98	-397.4	2,064.9	556.4	440.4	116.06	4.795		
9,500.0	7,000.0	9,799.4	7,310.0	71.4	71.6	123.95	-398.3	2,164.9	556.9	436.2	120.68	4.615		
9,600.0	7,000.0	9,899.4	7,310.0	74.1	74.3	123.91	-399.2	2,264.9	557.4	432.1	125.32	4.448		
9,700.0	7,000.0	9,999.4	7,310.0	76.8	77.1	123.88	-400.1	2,364.9	557.9	427.9	129.96	4.293		
9,800.0	7,000.0	10,099.4	7,310.0	79.5	79.8	123.85	-401.0	2,464.9	558.4	423.7	134.63	4.147		
9,900.0	7,000.0	10,199.4	7,310.0	82.3	82.6	123.82	-401.9	2,564.9	558.8	419.5	139.30	4.012		
10,000.0	7,000.0	10,299.4	7,310.0	85.0	85.3	123.78	-402.8	2,664.8	559.3	415.3	143.98	3.885		
10,100.0	7,000.0	10,399.4	7,310.0	87.8	88.1	123.75	-403.7	2,764.8	559.8	411.1	148.67	3.765		

<b>Company:</b>	Synergy Resources	<b>Local Co-ordinate Reference:</b>	Well SRC Union 5AHZN
<b>Project:</b>	SEC.5-T2N-R68W	<b>TVD Reference:</b>	WELL @ 4978.0ft (RKB - 13')
<b>Reference Site:</b>	SRC Union Pad Sec.5-T2N-R68W	<b>MD Reference:</b>	WELL @ 4978.0ft (RKB - 13')
<b>Site Error:</b>	0.0ft	<b>North Reference:</b>	True
<b>Reference Well:</b>	SRC Union 5AHZN	<b>Survey Calculation Method:</b>	Minimum Curvature
<b>Well Error:</b>	0.0ft	<b>Output errors are at</b>	2.00 sigma
<b>Reference Wellbore</b>	Wellbore #1	<b>Database:</b>	Landmark
<b>Reference Design:</b>	Plan #2 (4-08-13)	<b>Offset TVD Reference:</b>	Offset Datum

<b>Offset Design</b> SRC Union Pad Sec.5-T2N-R68W - SRC Union 12HZC - Wellbore #1 - Plan #2 (4-08-13)												<b>Offset Site Error:</b>	0.0 ft
Survey Program: 0-MWD												<b>Offset Well Error:</b>	0.0 ft
Reference		Offset		Semi Major Axis			Distance						Warning
Measured Depth (ft)	Vertical Depth (ft)	Measured Depth (ft)	Vertical Depth (ft)	Reference (ft)	Offset (ft)	Highside Toolface (°)	Offset Wellbore Centre +N/-S (ft)	+E/-W (ft)	Between Centres (ft)	Between Ellipses (ft)	Minimum Separation (ft)	Separation Factor	
10,200.0	7,000.0	10,499.4	7,310.0	90.5	90.8	123.72	-404.6	2,864.8	560.3	406.9	153.38	3.653	
10,300.0	7,000.0	10,599.4	7,310.0	93.3	93.6	123.68	-405.5	2,964.8	560.8	402.7	158.09	3.547	
10,400.0	7,000.0	10,699.4	7,310.0	96.0	96.3	123.65	-406.4	3,064.8	561.2	398.4	162.80	3.447	
10,500.0	7,000.0	10,799.4	7,310.0	98.8	99.1	123.62	-407.3	3,164.8	561.7	394.2	167.53	3.353	
10,600.0	7,000.0	10,899.4	7,310.0	101.6	101.9	123.59	-408.2	3,264.8	562.2	389.9	172.26	3.264	
10,700.0	7,000.0	10,999.4	7,310.0	104.3	104.6	123.55	-409.1	3,364.8	562.7	385.7	177.00	3.179	
10,800.0	7,000.0	11,099.4	7,310.0	107.1	107.4	123.52	-410.0	3,464.8	563.2	381.4	181.75	3.099	
10,900.0	7,000.0	11,199.4	7,310.0	109.9	110.2	123.49	-411.0	3,564.8	563.6	377.1	186.51	3.022	
11,000.0	7,000.0	11,299.4	7,310.0	112.6	113.0	123.46	-411.9	3,664.8	564.1	372.9	191.26	2.949	
11,100.0	7,000.0	11,399.4	7,310.0	115.4	115.7	123.42	-412.8	3,764.8	564.6	368.6	196.03	2.880	
11,200.0	7,000.0	11,499.4	7,310.0	118.2	118.5	123.39	-413.7	3,864.8	565.1	364.3	200.80	2.814	
11,300.0	7,000.0	11,599.4	7,310.0	120.9	121.3	123.36	-414.6	3,964.8	565.6	360.0	205.58	2.751	
11,400.0	7,000.0	11,699.4	7,310.0	123.7	124.1	123.33	-415.5	4,064.8	566.1	355.7	210.36	2.691	
11,500.0	7,000.0	11,799.4	7,310.0	126.5	126.8	123.30	-416.4	4,164.8	566.5	351.4	215.15	2.633	
11,600.0	7,000.0	11,899.4	7,310.0	129.3	129.6	123.26	-417.3	4,264.8	567.0	347.1	219.94	2.578	
11,700.0	7,000.0	11,998.0	7,310.0	132.1	132.4	123.23	-418.2	4,363.4	567.5	342.8	224.70	2.526	
11,703.2	7,000.0	11,998.0	7,310.0	132.1	132.4	123.23	-418.2	4,363.4	567.5	342.8	224.78	2.525 SF	

SRC Union Pad Sec.5-T2N-R68W - SRC Union 12HZN - Wellbore #1 - Plan #2 (4-08-13)													Offset Site Error:	0.0 ft
Survey Program: 0-MWD													Offset Well Error:	0.0 ft
Reference		Offset		Semi Major Axis			Distance							
Measured Depth (ft)	Vertical Depth (ft)	Measured Depth (ft)	Vertical Depth (ft)	Reference (ft)	Offset (ft)	Highside Toolface (°)	Offset Wellbore Centre +N/-S (ft)	+E/-W (ft)	Between Centres (ft)	Between Ellipses (ft)	Minimum Separation (ft)	Separation Factor	Warning	
0.0	0.0	0.0	0.0	0.0	0.0	-111.36	-21.9	-55.9	60.0					
100.0	100.0	100.0	100.0	0.1	0.1	-111.36	-21.9	-55.9	60.0	59.8	0.22	267.012		
200.0	200.0	200.0	200.0	0.3	0.3	-111.36	-21.9	-55.9	60.0	59.3	0.67	89.004		
300.0	300.0	300.0	300.0	0.6	0.6	-111.36	-21.9	-55.9	60.0	58.9	1.12	53.402		
400.0	400.0	400.0	400.0	0.8	0.8	-111.36	-21.9	-55.9	60.0	58.4	1.57	38.145		
500.0	500.0	500.0	500.0	1.0	1.0	-111.36	-21.9	-55.9	60.0	58.0	2.02	29.668		
600.0	600.0	600.0	600.0	1.2	1.2	-111.36	-21.9	-55.9	60.0	57.5	2.47	24.274		
700.0	700.0	700.0	700.0	1.5	1.5	-111.36	-21.9	-55.9	60.0	57.1	2.92	20.539		
800.0	800.0	800.0	800.0	1.7	1.7	-111.36	-21.9	-55.9	60.0	56.6	3.37	17.801		
900.0	900.0	900.0	900.0	1.9	1.9	-111.36	-21.9	-55.9	60.0	56.2	3.82	15.707		
1,000.0	1,000.0	1,000.0	1,000.0	2.1	2.1	-111.36	-21.9	-55.9	60.0	55.7	4.27	14.053		
1,100.0	1,100.0	1,100.0	1,100.0	2.4	2.4	-111.36	-21.9	-55.9	60.0	55.3	4.72	12.715		
1,200.0	1,200.0	1,200.0	1,200.0	2.6	2.6	-111.36	-21.9	-55.9	60.0	54.8	5.17	11.609		
1,300.0	1,300.0	1,300.0	1,300.0	2.8	2.8	-111.36	-21.9	-55.9	60.0	54.4	5.62	10.680		
1,400.0	1,400.0	1,400.0	1,400.0	3.0	3.0	-111.36	-21.9	-55.9	60.0	53.9	6.07	9.889		
1,500.0	1,500.0	1,500.0	1,500.0	3.3	3.3	-111.36	-21.9	-55.9	60.0	53.5	6.52	9.207		
1,600.0	1,600.0	1,600.0	1,600.0	3.5	3.5	-111.36	-21.9	-55.9	60.0	53.0	6.97	8.613		
1,700.0	1,700.0	1,700.0	1,700.0	3.7	3.7	-111.36	-21.9	-55.9	60.0	52.6	7.42	8.091		
1,800.0	1,800.0	1,800.0	1,800.0	3.9	3.9	-111.36	-21.9	-55.9	60.0	52.1	7.87	7.629 CC, ES		
1,900.0	1,900.0	1,897.9	1,897.9	4.2	4.1	-111.50	-22.6	-57.4	61.7	53.4	8.29	7.443		
2,000.0	2,000.0	1,995.6	1,995.5	4.4	4.3	-111.88	-24.8	-61.9	66.8	58.1	8.70	7.679		
2,100.0	2,100.0	2,092.8	2,092.3	4.6	4.5	-112.41	-28.6	-69.3	75.3	66.2	9.12	8.258		
2,200.0	2,200.0	2,189.4	2,188.2	4.8	4.7	-112.96	-33.7	-79.5	87.2	77.6	9.55	9.126		
2,300.0	2,300.0	2,288.0	2,285.8	5.1	4.9	-113.47	-39.9	-91.9	101.2	91.2	10.00	10.115		
2,400.0	2,400.0	2,387.0	2,383.8	5.3	5.2	-113.85	-46.1	-104.3	115.2	104.8	10.47	11.006		
2,500.0	2,500.0	2,486.0	2,481.8	5.5	5.4	-114.15	-52.4	-116.8	129.3	118.4	10.95	11.809		
2,600.0	2,600.0	2,585.0	2,579.8	5.7	5.7	-114.40	-58.6	-129.3	143.4	131.9	11.44	12.534		
2,700.0	2,700.0	2,684.0	2,677.8	6.0	6.0	-114.59	-64.9	-141.7	157.4	145.5	11.94	13.190		
2,800.0	2,800.0	2,783.0	2,775.9	6.2	6.3	-114.76	-71.1	-154.2	171.5	159.1	12.44	13.785		
2,900.0	2,900.0	2,882.0	2,873.9	6.4	6.6	-114.90	-77.4	-166.7	185.6	172.6	12.95	14.327		
3,000.0	3,000.0	2,981.0	2,971.9	6.6	6.8	-115.02	-83.6	-179.1	199.7	186.2	13.47	14.820		
3,100.0	3,100.0	3,080.2	3,070.1	6.8	7.1	-33.39	-89.9	-191.6	212.3	198.9	13.40	15.842		
3,200.0	3,199.8	3,179.6	3,168.6	7.0	7.5	-34.11	-96.1	-204.1	222.0	208.2	13.81	16.074		
3,300.0	3,299.5	3,279.3	3,267.2	7.3	7.8	-35.29	-102.4	-216.7	229.0	214.8	14.23	16.098		
3,400.0	3,398.7	3,378.9	3,365.9	7.5	8.1	-36.93	-108.7	-229.2	233.3	218.6	14.64	15.936		
3,500.0	3,497.5	3,478.5	3,464.5	7.7	8.4	-39.06	-115.0	-241.7	235.0	220.0	15.06	15.607		
3,600.0	3,595.8	3,578.0	3,563.0	8.0	8.7	-41.58	-121.3	-254.3	235.2	219.6	15.52	15.150		
3,700.0	3,694.1	3,677.4	3,661.4	8.2	9.0	-44.11	-127.5	-266.8	235.7	219.7	16.02	14.716		
3,800.0	3,792.4	3,776.9	3,759.9	8.5	9.4	-46.62	-133.8	-279.3	236.7	220.2	16.53	14.319		
3,900.0	3,890.8	3,876.3	3,858.3	8.8	9.7	-49.11	-140.1	-291.8	238.2	221.1	17.07	13.954		
4,000.0	3,989.1	3,975.8	3,956.8	9.1	10.0	-51.56	-146.3	-304.3	240.1	222.4	17.62	13.621		
4,100.0	4,087.4	4,075.2	4,055.3	9.4	10.3	-53.97	-152.6	-316.8	242.4	224.2	18.20	13.315		
4,200.0	4,185.7	4,174.7	4,153.7	9.7	10.7	-56.34	-158.9	-329.4	245.2	226.4	18.81	13.037		
4,300.0	4,284.0	4,274.1	4,252.2	10.1	11.0	-58.64	-165.2	-341.9	248.3	228.9	19.43	12.783		
4,400.0	4,382.3	4,373.6	4,350.6	10.4	11.3	-60.89	-171.4	-354.4	251.9	231.8	20.07	12.552		
4,500.0	4,480.7	4,473.0	4,449.1	10.7	11.7	-63.07	-177.7	-366.9	255.9	235.1	20.73	12.344		
4,600.0	4,579.0	4,572.5	4,547.6	11.1	12.0	-65.18	-184.0	-379.4	260.2	238.8	21.40	12.155		
4,700.0	4,677.3	4,671.9	4,646.0	11.4	12.3	-67.22	-190.3	-392.0	264.8	242.7	22.09	11.986		
4,800.0	4,775.6	4,771.4	4,744.5	11.8	12.7	-69.19	-196.5	-404.5	269.8	247.0	22.80	11.834		
4,900.0	4,873.9	4,870.8	4,842.9	12.1	13.0	-71.08	-202.8	-417.0	275.1	251.6	23.51	11.698		
5,000.0	4,972.2	4,970.3	4,941.4	12.5	13.4	-72.90	-209.1	-429.5	280.7	256.4	24.24	11.578		
5,100.0	5,070.6	5,069.7	5,039.9	12.9	13.7	-74.65	-215.3	-442.0	286.5	261.5	24.97	11.472		

COMPASS 2003.21 Build 46

<b>Company:</b>	Synergy Resources	<b>Local Co-ordinate Reference:</b>	Well SRC Union 5AHZN
<b>Project:</b>	SEC.5-T2N-R68W	<b>TVD Reference:</b>	WELL @ 4978.0ft (RKB - 13')
<b>Reference Site:</b>	SRC Union Pad Sec.5-T2N-R68W	<b>MD Reference:</b>	WELL @ 4978.0ft (RKB - 13')
<b>Site Error:</b>	0.0ft	<b>North Reference:</b>	True
<b>Reference Well:</b>	SRC Union 5AHZN	<b>Survey Calculation Method:</b>	Minimum Curvature
<b>Well Error:</b>	0.0ft	<b>Output errors are at</b>	2.00 sigma
<b>Reference Wellbore</b>	Wellbore #1	<b>Database:</b>	Landmark
<b>Reference Design:</b>	Plan #2 (4-08-13)	<b>Offset TVD Reference:</b>	Offset Datum

Offset Design												Offset Site Error:	0.0 ft
Survey Program: 0-MWD												Offset Well Error:	0.0 ft
Reference		Offset		Semi Major Axis			Distance						
Measured Depth (ft)	Vertical Depth (ft)	Measured Depth (ft)	Vertical Depth (ft)	Reference (ft)	Offset (ft)	Highside Toolface (°)	Offset Wellbore Centre +N/-S (ft)	+E/-W (ft)	Between Centres (ft)	Between Ellipses (ft)	Minimum Separation (ft)	Separation Factor	Warning
5,200.0	5,168.9	5,169.2	5,138.3	13.2	14.0	-76.33	-221.6	-454.5	292.6	266.9	25.72	11.379	
5,300.0	5,267.2	5,268.6	5,236.8	13.6	14.4	-77.94	-227.9	-467.1	299.0	272.5	26.46	11.298	
5,400.0	5,365.5	5,368.1	5,335.2	14.0	14.7	-79.48	-234.2	-479.6	305.6	278.3	27.22	11.227	
5,500.0	5,463.8	5,470.6	5,436.7	14.4	15.0	-81.04	-240.5	-492.2	312.2	284.2	27.97	11.160	
5,600.0	5,562.1	5,577.8	5,543.4	14.7	15.3	-83.03	-245.7	-502.6	317.0	288.3	28.72	11.038	
5,700.0	5,660.4	5,684.6	5,649.9	15.1	15.5	-85.50	-249.1	-509.4	319.8	290.3	29.46	10.855	
5,800.0	5,758.8	5,790.7	5,755.8	15.5	15.7	-88.46	-250.7	-512.6	320.9	290.7	30.20	10.627	
5,900.0	5,857.3	5,892.1	5,857.3	15.8	15.9	-91.52	-250.9	-512.9	321.1	290.3	30.85	10.407	
6,000.0	5,956.3	5,991.1	5,956.3	16.1	16.0	-93.95	-250.9	-512.9	321.8	290.4	31.39	10.251	
6,100.0	6,055.8	6,090.6	6,055.8	16.3	16.2	-95.78	-250.9	-512.9	322.7	290.8	31.86	10.126	
6,200.0	6,155.6	6,190.4	6,155.6	16.5	16.4	-96.99	-250.9	-512.9	323.4	291.1	32.28	10.018	
6,300.0	6,255.5	6,290.3	6,255.5	16.7	16.5	-97.57	-250.9	-512.9	323.8	291.2	32.66	9.916	
6,400.0	6,355.5	6,390.3	6,355.5	16.9	16.7	-179.49	-250.9	-512.9	323.9	295.2	28.62	11.316	
6,500.0	6,455.5	6,490.3	6,455.5	17.1	16.9	-179.49	-250.9	-512.9	323.9	294.8	29.02	11.158	
6,600.0	6,555.2	6,590.3	6,555.2	17.2	17.0	90.26	-250.9	-507.3	323.9	290.3	33.60	9.638	
6,700.0	6,652.2	6,690.4	6,652.2	17.2	17.0	90.24	-251.1	-483.3	324.0	290.4	33.60	9.642	
6,800.0	6,742.7	6,790.4	6,742.8	17.1	16.9	90.22	-251.5	-441.3	324.2	290.7	33.46	9.690	
6,900.0	6,823.6	6,890.4	6,823.6	17.0	16.8	90.19	-252.0	-382.7	324.4	291.1	33.32	9.735	
7,000.0	6,891.8	6,990.4	6,891.9	17.1	16.8	90.16	-252.6	-309.8	324.7	291.3	33.44	9.712	
7,100.0	6,944.9	7,090.4	6,944.9	17.4	17.0	90.12	-253.3	-225.2	325.1	291.0	34.04	9.549	
7,200.0	6,980.8	7,190.4	6,980.8	18.0	17.5	90.07	-254.1	-132.0	325.5	290.1	35.33	9.212	
7,300.0	6,998.3	7,290.4	6,998.3	19.0	18.4	90.02	-255.0	-33.7	325.9	288.6	37.32	8.731	
7,400.0	7,000.0	7,390.4	7,000.0	20.2	19.7	90.00	-255.9	66.2	326.4	286.5	39.92	8.176	
7,500.0	7,000.0	7,490.4	7,000.0	21.8	21.3	90.00	-256.7	166.2	326.9	283.8	43.08	7.589	
7,600.0	7,000.0	7,590.4	7,000.0	23.6	23.1	90.00	-257.6	266.2	327.5	280.8	46.70	7.012	
7,700.0	7,000.0	7,690.4	7,000.0	25.6	25.1	90.00	-258.5	366.2	328.0	277.3	50.68	6.471	
7,800.0	7,000.0	7,790.4	7,000.0	27.7	27.3	90.00	-259.3	466.2	328.5	273.6	54.95	5.979	
7,900.0	7,000.0	7,890.4	7,000.0	29.9	29.5	90.00	-260.2	566.2	329.1	269.6	59.45	5.536	
8,000.0	7,000.0	7,990.4	7,000.0	32.2	31.9	90.00	-261.1	666.2	329.6	265.5	64.12	5.141	
8,100.0	7,000.0	8,090.4	7,000.0	34.6	34.3	90.00	-261.9	766.2	330.2	261.2	68.93	4.790	
8,200.0	7,000.0	8,190.4	7,000.0	37.1	36.8	90.00	-262.8	866.2	330.7	256.9	73.85	4.478	
8,300.0	7,000.0	8,290.4	7,000.0	39.6	39.3	90.00	-263.7	966.2	331.3	252.4	78.86	4.200	
8,400.0	7,000.0	8,390.4	7,000.0	42.1	41.9	90.00	-264.5	1,066.2	331.8	247.9	83.95	3.952	
8,500.0	7,000.0	8,490.4	7,000.0	44.7	44.5	90.00	-265.4	1,166.2	332.3	243.2	89.11	3.730	
8,600.0	7,000.0	8,590.4	7,000.0	47.3	47.1	90.00	-266.3	1,266.2	332.9	238.6	94.31	3.530	
8,700.0	7,000.0	8,690.4	7,000.0	49.9	49.7	90.00	-267.2	1,366.2	333.4	233.9	99.56	3.349	
8,800.0	7,000.0	8,790.4	7,000.0	52.5	52.3	90.00	-268.0	1,466.1	334.0	229.1	104.85	3.185	
8,900.0	7,000.0	8,890.4	7,000.0	55.2	55.0	90.00	-268.9	1,566.1	334.5	224.4	110.17	3.036	
9,000.0	7,000.0	8,990.4	7,000.0	57.9	57.7	90.00	-269.8	1,666.1	335.1	219.6	115.52	2.901	
9,100.0	7,000.0	9,090.4	7,000.0	60.5	60.4	90.00	-270.6	1,766.1	335.6	214.7	120.89	2.776	
9,200.0	7,000.0	9,190.4	7,000.0	63.2	63.1	90.00	-271.5	1,866.1	336.2	209.9	126.28	2.662	
9,300.0	7,000.0	9,290.4	7,000.0	65.9	65.8	90.00	-272.4	1,966.1	336.7	205.0	131.69	2.557	
9,400.0	7,000.0	9,390.4	7,000.0	68.6	68.5	90.00	-273.2	2,066.1	337.2	200.1	137.11	2.460	
9,500.0	7,000.0	9,490.4	7,000.0	71.4	71.2	90.00	-274.1	2,166.1	337.8	195.2	142.56	2.370	
9,600.0	7,000.0	9,590.4	7,000.0	74.1	74.0	90.00	-275.0	2,266.1	338.3	190.3	148.01	2.286	
9,700.0	7,000.0	9,690.4	7,000.0	76.8	76.7	90.00	-275.8	2,366.1	338.9	185.4	153.47	2.208	
9,800.0	7,000.0	9,790.4	7,000.0	79.5	79.4	90.00	-276.7	2,466.1	339.4	180.5	158.95	2.135	
9,900.0	7,000.0	9,890.4	7,000.0	82.3	82.2	90.00	-277.6	2,566.1	340.0	175.5	164.43	2.067	
10,000.0	7,000.0	9,990.4	7,000.0	85.0	84.9	90.00	-278.4	2,666.1	340.5	170.6	169.92	2.004	
10,100.0	7,000.0	10,090.4	7,000.0	87.8	87.7	90.00	-279.3	2,766.1	341.0	165.6	175.42	1.944	
10,200.0	7,000.0	10,190.3	7,000.0	90.5	90.4	90.00	-280.2	2,866.1	341.6	160.7	180.93	1.888	
10,300.0	7,000.0	10,290.3	7,000.0	93.3	93.2	90.00	-281.1	2,966.1	342.1	155.7	186.44	1.835	

CC - Min centre to center distance or convergent point, SF - min separation factor, ES - min ellipse separation

<b>Company:</b>	Synergy Resources	<b>Local Co-ordinate Reference:</b>	Well SRC Union 5AHZN
<b>Project:</b>	SEC.5-T2N-R68W	<b>TVD Reference:</b>	WELL @ 4978.0ft (RKB - 13')
<b>Reference Site:</b>	SRC Union Pad Sec.5-T2N-R68W	<b>MD Reference:</b>	WELL @ 4978.0ft (RKB - 13')
<b>Site Error:</b>	0.0ft	<b>North Reference:</b>	True
<b>Reference Well:</b>	SRC Union 5AHZN	<b>Survey Calculation Method:</b>	Minimum Curvature
<b>Well Error:</b>	0.0ft	<b>Output errors are at</b>	2.00 sigma
<b>Reference Wellbore</b>	Wellbore #1	<b>Database:</b>	Landmark
<b>Reference Design:</b>	Plan #2 (4-08-13)	<b>Offset TVD Reference:</b>	Offset Datum

<b>Offset Design</b> SRC Union Pad Sec.5-T2N-R68W - SRC Union 12HZN - Wellbore #1 - Plan #2 (4-08-13)												<b>Offset Site Error:</b>	0.0 ft
Survey Program: 0-MWD												<b>Offset Well Error:</b>	0.0 ft
Reference		Offset		Semi Major Axis			Distance						
Measured Depth (ft)	Vertical Depth (ft)	Measured Depth (ft)	Vertical Depth (ft)	Reference (ft)	Offset (ft)	Highside Toolface (°)	Offset Wellbore Centre +N/-S (ft)	+E/-W (ft)	Between Centres (ft)	Between Ellipses (ft)	Minimum Separation (ft)	Separation Factor	Warning
10,400.0	7,000.0	10,390.3	7,000.0	96.0	96.0	90.00	-281.9	3,066.1	342.7	150.7	191.96	1.785	
10,500.0	7,000.0	10,490.3	7,000.0	98.8	98.7	90.00	-282.8	3,166.1	343.2	145.7	197.49	1.738	
10,600.0	7,000.0	10,590.3	7,000.0	101.6	101.5	90.00	-283.7	3,266.1	343.8	140.8	203.01	1.693	
10,700.0	7,000.0	10,690.3	7,000.0	104.3	104.3	90.00	-284.5	3,366.0	344.3	135.8	208.55	1.651	
10,800.0	7,000.0	10,790.3	7,000.0	107.1	107.0	90.00	-285.4	3,466.0	344.9	130.8	214.08	1.611	
10,900.0	7,000.0	10,890.3	7,000.0	109.9	109.8	90.00	-286.3	3,566.0	345.4	125.8	219.63	1.573	
11,000.0	7,000.0	10,990.3	7,000.0	112.6	112.6	90.00	-287.1	3,666.0	345.9	120.8	225.17	1.536	
11,100.0	7,000.0	11,090.3	7,000.0	115.4	115.4	90.00	-288.0	3,766.0	346.5	115.8	230.72	1.502	
11,200.0	7,000.0	11,190.3	7,000.0	118.2	118.1	90.00	-288.9	3,866.0	347.0	110.8	236.27	1.469	Level 3
11,300.0	7,000.0	11,290.3	7,000.0	120.9	120.9	90.00	-289.7	3,966.0	347.6	105.7	241.82	1.437	Level 3
11,400.0	7,000.0	11,390.3	7,000.0	123.7	123.7	90.00	-290.6	4,066.0	348.1	100.7	247.38	1.407	Level 3
11,500.0	7,000.0	11,490.3	7,000.0	126.5	126.5	90.00	-291.5	4,166.0	348.7	95.7	252.94	1.378	Level 3
11,600.0	7,000.0	11,590.3	7,000.0	129.3	129.2	90.00	-292.4	4,266.0	349.2	90.7	258.50	1.351	Level 3
11,700.0	7,000.0	11,689.9	7,000.0	132.1	132.0	90.00	-293.2	4,365.6	349.7	85.7	264.05	1.325	Level 3
11,703.2	7,000.0	11,689.9	7,000.0	132.1	132.0	90.00	-293.2	4,365.6	349.8	85.6	264.14	1.324	Level 3, SF

<b>Company:</b>	Synergy Resources	<b>Local Co-ordinate Reference:</b>	Well SRC Union 5AHZN
<b>Project:</b>	SEC.5-T2N-R68W	<b>TVD Reference:</b>	WELL @ 4978.0ft (RKB - 13')
<b>Reference Site:</b>	SRC Union Pad Sec.5-T2N-R68W	<b>MD Reference:</b>	WELL @ 4978.0ft (RKB - 13')
<b>Site Error:</b>	0.0ft	<b>North Reference:</b>	True
<b>Reference Well:</b>	SRC Union 5AHZN	<b>Survey Calculation Method:</b>	Minimum Curvature
<b>Well Error:</b>	0.0ft	<b>Output errors are at</b>	2.00 sigma
<b>Reference Wellbore</b>	Wellbore #1	<b>Database:</b>	Landmark
<b>Reference Design:</b>	Plan #2 (4-08-13)	<b>Offset TVD Reference:</b>	Offset Datum

Offset Design SRC Union Pad Sec.5-T2N-R68W - SRC Union 5AHZC - Wellbore #1 - Plan #2 (4-08-13)													Offset Site Error:	0.0 ft
Survey Program: 0-MWID													Offset Well Error:	0.0 ft
Measured Depth (ft)	Vertical Depth (ft)	Measured Depth (ft)	Vertical Depth (ft)	Reference (ft)	Offset (ft)	Highside Toolface (°)	Offset Wellbore Centre +N/-S (ft)	+E/-W (ft)	Between Centres (ft)	Between Ellipses (ft)	Minimum Separation (ft)	Separation Factor	Warning	
0.0	0.0	0.0	0.0	0.0	0.0	-111.41	-14.6	-37.2	39.9					
100.0	100.0	100.0	100.0	0.1	0.1	-111.41	-14.6	-37.2	39.9	39.7	0.22	177.622		
200.0	200.0	200.0	200.0	0.3	0.3	-111.41	-14.6	-37.2	39.9	39.2	0.67	59.207		
300.0	300.0	300.0	300.0	0.6	0.6	-111.41	-14.6	-37.2	39.9	38.8	1.12	35.524		
400.0	400.0	400.0	400.0	0.8	0.8	-111.41	-14.6	-37.2	39.9	38.4	1.57	25.375		
500.0	500.0	500.0	500.0	1.0	1.0	-111.41	-14.6	-37.2	39.9	37.9	2.02	19.736		
600.0	600.0	600.0	600.0	1.2	1.2	-111.41	-14.6	-37.2	39.9	37.5	2.47	16.147		
700.0	700.0	700.0	700.0	1.5	1.5	-111.41	-14.6	-37.2	39.9	37.0	2.92	13.663		
800.0	800.0	800.0	800.0	1.7	1.7	-111.41	-14.6	-37.2	39.9	36.6	3.37	11.841		
900.0	900.0	900.0	900.0	1.9	1.9	-111.41	-14.6	-37.2	39.9	36.1	3.82	10.448 CC		
1,000.0	1,000.0	999.7	999.6	2.1	2.1	-109.00	-13.1	-38.1	40.3	36.1	4.27	9.451 ES		
1,100.0	1,100.0	1,099.1	1,098.9	2.4	2.4	-102.16	-8.8	-41.0	42.0	37.3	4.72	8.903		
1,200.0	1,200.0	1,198.0	1,197.5	2.6	2.6	-92.17	-1.7	-45.8	45.9	40.8	5.17	8.886		
1,300.0	1,300.0	1,296.2	1,295.0	2.8	2.8	-81.23	8.1	-52.5	53.3	47.7	5.63	9.472		
1,400.0	1,400.0	1,393.5	1,391.1	3.0	3.1	-71.34	20.6	-60.9	64.9	58.8	6.11	10.618		
1,500.0	1,500.0	1,491.6	1,487.6	3.3	3.4	-63.66	35.0	-70.6	79.8	73.2	6.62	12.047		
1,600.0	1,600.0	1,590.0	1,584.5	3.5	3.7	-58.40	49.5	-80.4	95.7	88.6	7.15	13.377		
1,700.0	1,700.0	1,688.4	1,681.3	3.7	4.0	-54.66	64.0	-90.2	112.2	104.5	7.70	14.564		
1,800.0	1,800.0	1,786.8	1,778.1	3.9	4.4	-51.88	78.5	-100.0	129.0	120.7	8.26	15.610		
1,900.0	1,900.0	1,885.2	1,875.0	4.2	4.7	-49.74	93.0	-109.8	146.1	137.2	8.84	16.532		
2,000.0	2,000.0	1,983.6	1,971.8	4.4	5.1	-48.05	107.5	-119.6	163.3	153.9	9.41	17.344		
2,100.0	2,100.0	2,082.0	2,068.6	4.6	5.5	-46.69	122.0	-129.4	180.6	170.6	10.00	18.063		
2,200.0	2,200.0	2,180.4	2,165.5	4.8	5.8	-45.56	136.5	-139.2	198.0	187.4	10.59	18.702		
2,300.0	2,300.0	2,278.8	2,262.3	5.1	6.2	-44.62	151.0	-149.0	215.5	204.3	11.18	19.273		
2,400.0	2,400.0	2,377.3	2,359.1	5.3	6.6	-43.81	165.5	-158.8	233.0	221.2	11.78	19.786		
2,500.0	2,500.0	2,475.7	2,456.0	5.5	6.9	-43.12	180.0	-168.6	250.6	238.2	12.37	20.247		
2,600.0	2,600.0	2,574.1	2,552.8	5.7	7.3	-42.52	194.5	-178.4	268.1	255.2	12.98	20.666		
2,700.0	2,700.0	2,672.5	2,649.6	6.0	7.7	-42.00	209.0	-188.2	285.7	272.2	13.58	21.046		
2,800.0	2,800.0	2,770.9	2,746.5	6.2	8.1	-41.53	223.5	-198.0	303.4	289.2	14.18	21.393		
2,900.0	2,900.0	2,869.3	2,843.3	6.4	8.5	-41.12	238.1	-207.8	321.0	306.2	14.79	21.710		
3,000.0	3,000.0	2,967.7	2,940.2	6.6	8.8	-40.75	252.6	-217.6	338.7	323.3	15.39	22.002		
3,100.0	3,100.0	3,066.3	3,037.2	6.8	9.2	41.41	267.1	-227.4	355.1	341.1	13.96	25.436		
3,200.0	3,199.8	3,165.2	3,134.5	7.0	9.6	42.07	281.7	-237.2	368.9	354.5	14.41	25.597		
3,300.0	3,299.5	3,264.2	3,232.0	7.3	10.0	43.05	296.3	-247.1	380.3	365.5	14.86	25.587		
3,400.0	3,398.7	3,363.4	3,329.5	7.5	10.4	44.35	310.9	-257.0	389.4	374.1	15.32	25.422		
3,500.0	3,497.5	3,462.4	3,427.0	7.7	10.8	45.97	325.5	-266.8	396.2	380.4	15.78	25.113		
3,600.0	3,595.8	3,561.4	3,524.4	8.0	11.2	47.86	340.1	-276.7	401.7	385.5	16.27	24.687		
3,700.0	3,694.1	3,660.3	3,621.7	8.2	11.6	49.74	354.6	-286.5	407.6	390.8	16.79	24.272		
3,800.0	3,792.4	3,759.2	3,719.1	8.5	12.0	51.56	369.2	-296.4	413.9	396.5	17.33	23.880		
3,900.0	3,890.8	3,858.1	3,816.4	8.8	12.4	53.33	383.8	-306.2	420.6	402.7	17.89	23.509		
4,000.0	3,989.1	3,957.1	3,913.8	9.1	12.7	55.04	398.4	-316.1	427.7	409.2	18.47	23.158		
4,100.0	4,087.4	4,056.0	4,011.1	9.4	13.1	56.70	413.0	-325.9	435.2	416.1	19.06	22.825		
4,200.0	4,185.7	4,154.9	4,108.5	9.7	13.5	58.30	427.6	-335.8	443.0	423.3	19.68	22.510		
4,300.0	4,284.0	4,253.9	4,205.8	10.1	13.9	59.84	442.1	-345.6	451.1	430.8	20.31	22.212		
4,400.0	4,382.3	4,352.8	4,303.2	10.4	14.3	61.33	456.7	-355.5	459.6	438.7	20.96	21.931		
4,500.0	4,480.7	4,451.7	4,400.5	10.7	14.7	62.76	471.3	-365.3	468.4	446.8	21.62	21.666		
4,600.0	4,579.0	4,550.7	4,497.9	11.1	15.1	64.14	485.9	-375.2	477.5	455.2	22.29	21.416		
4,700.0	4,677.3	4,649.6	4,595.2	11.4	15.5	65.47	500.5	-385.0	486.8	463.8	22.98	21.181		
4,800.0	4,775.6	4,748.5	4,692.6	11.8	15.9	66.75	515.1	-394.9	496.4	472.7	23.68	20.961		
4,900.0	4,873.9	4,847.5	4,790.0	12.1	16.3	67.98	529.6	-404.7	506.2	481.8	24.39	20.754		
5,000.0	4,972.2	4,946.4	4,887.3	12.5	16.7	69.16	544.2	-414.6	516.2	491.1	25.11	20.559		
5,100.0	5,070.6	5,045.3	4,984.7	12.9	17.1	70.30	558.8	-424.4	526.5	500.7	25.84	20.377		

CC - Min centre to center distance or convergent point, SF - min separation factor, ES - min ellipse separation

<b>Company:</b>	Synergy Resources	<b>Local Co-ordinate Reference:</b>	Well SRC Union 5AHZN
<b>Project:</b>	SEC.5-T2N-R68W	<b>TVD Reference:</b>	WELL @ 4978.0ft (RKB - 13')
<b>Reference Site:</b>	SRC Union Pad Sec.5-T2N-R68W	<b>MD Reference:</b>	WELL @ 4978.0ft (RKB - 13')
<b>Site Error:</b>	0.0ft	<b>North Reference:</b>	True
<b>Reference Well:</b>	SRC Union 5AHZN	<b>Survey Calculation Method:</b>	Minimum Curvature
<b>Well Error:</b>	0.0ft	<b>Output errors are at</b>	2.00 sigma
<b>Reference Wellbore</b>	Wellbore #1	<b>Database:</b>	Landmark
<b>Reference Design:</b>	Plan #2 (4-08-13)	<b>Offset TVD Reference:</b>	Offset Datum

Offset Design												Offset Site Error:	0.0 ft
Survey Program: 0-MWD												Offset Well Error:	0.0 ft
Reference		Offset		Semi Major Axis			Distance						Warning
Measured Depth (ft)	Vertical Depth (ft)	Measured Depth (ft)	Vertical Depth (ft)	Reference (ft)	Offset (ft)	Highside Toolface (°)	Offset Wellbore Centre +N/-S (ft)	+E/-W (ft)	Between Centres (ft)	Between Ellipses (ft)	Minimum Separation (ft)	Separation Factor	
5,200.0	5,168.9	5,144.3	5,082.0	13.2	17.5	71.40	573.4	-434.3	537.0	510.4	26.57	20.207	
5,300.0	5,267.2	5,243.2	5,179.4	13.6	17.9	72.45	588.0	-444.1	547.6	520.3	27.32	20.048	
5,400.0	5,365.5	5,342.1	5,276.7	14.0	18.3	73.46	602.6	-454.0	558.4	530.4	28.06	19.899	
5,500.0	5,463.8	5,441.0	5,374.1	14.4	18.7	74.44	617.1	-463.8	569.4	540.6	28.82	19.759	
5,600.0	5,562.1	5,540.0	5,471.4	14.7	19.0	75.38	631.7	-473.7	580.6	551.0	29.58	19.629	
5,700.0	5,660.4	5,656.3	5,586.2	15.1	19.4	76.51	647.5	-484.4	590.7	560.4	30.35	19.461	
5,800.0	5,758.8	5,777.1	5,706.0	15.5	19.7	77.89	659.9	-492.7	597.5	566.4	31.12	19.197	
5,900.0	5,857.3	5,897.8	5,826.3	15.8	20.0	79.40	668.1	-498.2	601.1	569.3	31.83	18.884	
6,000.0	5,956.3	6,018.6	5,947.0	16.1	20.2	80.73	672.0	-500.9	602.1	569.7	32.42	18.574	
6,100.0	6,055.8	6,127.4	6,055.8	16.3	20.3	81.74	672.4	-501.2	600.9	568.0	32.92	18.253	
6,200.0	6,155.6	6,227.1	6,155.6	16.5	20.5	82.36	672.4	-501.2	600.0	566.6	33.36	17.984	
6,300.0	6,255.5	6,327.1	6,255.5	16.7	20.6	82.67	672.4	-501.2	599.5	565.8	33.74	17.768	
6,365.0	6,320.5	6,392.0	6,320.5	16.8	20.7	82.73	672.4	-501.2	599.5	565.5	33.97	17.648	
6,400.0	6,355.5	6,427.1	6,355.5	16.9	20.7	0.84	672.4	-501.2	599.5	566.4	33.05	18.137	
6,500.0	6,455.5	6,527.1	6,455.5	17.1	20.9	0.84	672.4	-501.2	599.5	566.1	33.42	17.937	
6,600.0	6,555.2	6,626.8	6,555.2	17.2	21.0	-89.94	672.4	-501.2	599.5	564.8	34.69	17.279	
6,603.8	6,559.0	6,630.6	6,559.0	17.2	21.1	-90.00	672.4	-501.2	599.5	564.8	34.69	17.279	
6,700.0	6,652.2	6,723.7	6,652.2	17.2	21.2	-92.11	672.4	-501.2	599.9	565.3	34.63	17.325	
6,800.0	6,742.7	6,814.3	6,742.7	17.1	21.3	-95.38	672.4	-501.2	603.0	568.7	34.35	17.554	
6,900.0	6,823.6	6,905.5	6,833.9	17.0	21.5	-99.32	672.4	-499.2	611.9	577.9	33.96	18.017	
7,000.0	6,891.8	7,019.4	6,945.3	17.1	21.5	-103.86	672.4	-477.2	626.3	592.9	33.44	18.731	
7,100.0	6,944.9	7,158.5	7,071.0	17.4	21.4	-108.59	672.4	-418.3	644.3	611.4	32.89	19.592	
7,200.0	6,980.8	7,334.9	7,200.5	18.0	21.1	-113.27	672.4	-299.8	662.4	629.8	32.59	20.324	
7,300.0	6,998.3	7,555.3	7,295.4	19.0	20.7	-116.68	672.4	-102.8	674.7	641.1	33.64	20.056	
7,400.0	7,000.0	7,730.5	7,310.0	20.2	20.9	-117.25	672.3	71.3	676.9	640.6	36.36	18.617	
7,500.0	7,000.0	7,830.5	7,310.0	21.8	22.4	-117.26	671.9	171.3	676.9	637.8	39.06	17.331	
7,600.0	7,000.0	7,930.5	7,310.0	23.6	24.2	-117.26	671.6	271.3	676.9	634.7	42.17	16.049	
7,700.0	7,000.0	8,030.5	7,310.0	25.6	26.1	-117.26	671.2	371.3	676.8	631.2	45.63	14.832	
7,800.0	7,000.0	8,130.5	7,310.0	27.7	28.2	-117.26	670.8	471.3	676.8	627.4	49.36	13.711	
7,900.0	7,000.0	8,230.5	7,310.0	29.9	30.4	-117.26	670.5	571.3	676.8	623.5	53.30	12.696	
8,000.0	7,000.0	8,330.5	7,310.0	32.2	32.7	-117.26	670.1	671.3	676.7	619.3	57.42	11.786	
8,100.0	7,000.0	8,430.5	7,310.0	34.6	35.1	-117.27	669.7	771.3	676.7	615.0	61.67	10.974	
8,200.0	7,000.0	8,530.5	7,310.0	37.1	37.5	-117.27	669.4	871.3	676.7	610.6	66.02	10.249	
8,300.0	7,000.0	8,630.5	7,310.0	39.6	39.9	-117.27	669.0	971.3	676.6	606.1	70.47	9.602	
8,400.0	7,000.0	8,730.5	7,310.0	42.1	42.4	-117.27	668.6	1,071.3	676.6	601.6	74.99	9.022	
8,500.0	7,000.0	8,830.5	7,310.0	44.7	45.0	-117.27	668.3	1,171.3	676.5	597.0	79.57	8.503	
8,600.0	7,000.0	8,930.5	7,310.0	47.3	47.6	-117.27	667.9	1,271.3	676.5	592.3	84.20	8.034	
8,700.0	7,000.0	9,030.5	7,310.0	49.9	50.1	-117.27	667.5	1,371.3	676.5	587.6	88.88	7.611	
8,800.0	7,000.0	9,130.5	7,310.0	52.5	52.8	-117.28	667.2	1,471.3	676.4	582.9	93.59	7.228	
8,900.0	7,000.0	9,230.5	7,310.0	55.2	55.4	-117.28	666.8	1,571.2	676.4	578.1	98.33	6.879	
9,000.0	7,000.0	9,330.5	7,310.0	57.9	58.0	-117.28	666.4	1,671.2	676.4	573.3	103.10	6.561	
9,100.0	7,000.0	9,430.5	7,310.0	60.5	60.7	-117.28	666.1	1,771.2	676.3	568.4	107.89	6.269	
9,200.0	7,000.0	9,530.5	7,310.0	63.2	63.4	-117.28	665.7	1,871.2	676.3	563.6	112.70	6.001	
9,300.0	7,000.0	9,630.5	7,310.0	65.9	66.1	-117.28	665.3	1,971.2	676.3	558.7	117.53	5.754	
9,400.0	7,000.0	9,730.5	7,310.0	68.6	68.8	-117.29	665.0	2,071.2	676.2	553.8	122.37	5.526	
9,500.0	7,000.0	9,830.5	7,310.0	71.4	71.5	-117.29	664.6	2,171.2	676.2	549.0	127.23	5.315	
9,600.0	7,000.0	9,930.5	7,310.0	74.1	74.2	-117.29	664.2	2,271.2	676.1	544.0	132.10	5.118	
9,700.0	7,000.0	10,030.5	7,310.0	76.8	76.9	-117.29	663.9	2,371.2	676.1	539.1	136.99	4.936	
9,800.0	7,000.0	10,130.5	7,310.0	79.5	79.6	-117.29	663.5	2,471.2	676.1	534.2	141.88	4.765	
9,900.0	7,000.0	10,230.5	7,310.0	82.3	82.3	-117.29	663.1	2,571.2	676.0	529.3	146.78	4.606	
10,000.0	7,000.0	10,330.5	7,310.0	85.0	85.1	-117.30	662.8	2,671.2	676.0	524.3	151.69	4.457	
10,100.0	7,000.0	10,430.5	7,310.0	87.8	87.8	-117.30	662.4	2,771.2	676.0	519.4	156.60	4.316	

CC - Min centre to center distance or convergent point, SF - min separation factor, ES - min ellipse separation

<b>Company:</b>	Synergy Resources	<b>Local Co-ordinate Reference:</b>	Well SRC Union 5AHZN
<b>Project:</b>	SEC.5-T2N-R68W	<b>TVD Reference:</b>	WELL @ 4978.0ft (RKB - 13')
<b>Reference Site:</b>	SRC Union Pad Sec.5-T2N-R68W	<b>MD Reference:</b>	WELL @ 4978.0ft (RKB - 13')
<b>Site Error:</b>	0.0ft	<b>North Reference:</b>	True
<b>Reference Well:</b>	SRC Union 5AHZN	<b>Survey Calculation Method:</b>	Minimum Curvature
<b>Well Error:</b>	0.0ft	<b>Output errors are at</b>	2.00 sigma
<b>Reference Wellbore</b>	Wellbore #1	<b>Database:</b>	Landmark
<b>Reference Design:</b>	Plan #2 (4-08-13)	<b>Offset TVD Reference:</b>	Offset Datum

<b>Offset Design</b> SRC Union Pad Sec.5-T2N-R68W - SRC Union 5AHZC - Wellbore #1 - Plan #2 (4-08-13)												<b>Offset Site Error:</b>	0.0 ft
Survey Program: 0-MWD												<b>Offset Well Error:</b>	0.0 ft
Reference		Offset		Semi Major Axis			Distance						
Measured Depth (ft)	Vertical Depth (ft)	Measured Depth (ft)	Vertical Depth (ft)	Reference (ft)	Offset (ft)	Highside Toolface (°)	Offset Wellbore Centre +N/-S (ft)	+E/-W (ft)	Between Centres (ft)	Between Ellipses (ft)	Minimum Separation (ft)	Separation Factor	Warning
10,200.0	7,000.0	10,530.5	7,310.0	90.5	90.5	-117.30	662.0	2,871.2	675.9	514.4	161.52	4.185	
10,300.0	7,000.0	10,630.5	7,310.0	93.3	93.3	-117.30	661.7	2,971.2	675.9	509.4	166.45	4.061	
10,400.0	7,000.0	10,730.5	7,310.0	96.0	96.0	-117.30	661.3	3,071.2	675.9	504.5	171.39	3.943	
10,500.0	7,000.0	10,830.5	7,310.0	98.8	98.8	-117.30	660.9	3,171.2	675.8	499.5	176.33	3.833	
10,600.0	7,000.0	10,930.5	7,310.0	101.6	101.5	-117.30	660.6	3,271.2	675.8	494.5	181.27	3.728	
10,700.0	7,000.0	11,030.5	7,310.0	104.3	104.3	-117.31	660.2	3,371.2	675.8	489.5	186.22	3.629	
10,800.0	7,000.0	11,130.5	7,310.0	107.1	107.1	-117.31	659.8	3,471.2	675.7	484.5	191.17	3.535	
10,900.0	7,000.0	11,230.5	7,310.0	109.9	109.8	-117.31	659.5	3,571.2	675.7	479.6	196.12	3.445	
11,000.0	7,000.0	11,330.5	7,310.0	112.6	112.6	-117.31	659.1	3,671.2	675.6	474.6	201.08	3.360	
11,100.0	7,000.0	11,430.5	7,310.0	115.4	115.4	-117.31	658.7	3,771.2	675.6	469.6	206.04	3.279	
11,200.0	7,000.0	11,530.5	7,310.0	118.2	118.1	-117.31	658.4	3,871.2	675.6	464.6	211.00	3.202	
11,300.0	7,000.0	11,630.5	7,310.0	120.9	120.9	-117.32	658.0	3,971.2	675.5	459.6	215.97	3.128	
11,400.0	7,000.0	11,730.5	7,310.0	123.7	123.7	-117.32	657.6	4,071.2	675.5	454.6	220.94	3.057	
11,500.0	7,000.0	11,830.5	7,310.0	126.5	126.4	-117.32	657.3	4,171.2	675.5	449.6	225.91	2.990	
11,600.0	7,000.0	11,930.5	7,310.0	129.3	129.2	-117.32	656.9	4,271.2	675.4	444.5	230.88	2.925	
11,700.0	7,000.0	12,030.5	7,310.0	132.1	132.0	-117.32	656.6	4,371.2	675.4	439.5	235.86	2.864	
11,703.2	7,000.0	12,033.7	7,310.0	132.1	132.1	-117.32	656.5	4,374.4	675.4	439.4	236.02	2.862 SF	

<b>Company:</b>	Synergy Resources	<b>Local Co-ordinate Reference:</b>	Well SRC Union 5AHZN
<b>Project:</b>	SEC.5-T2N-R68W	<b>TVD Reference:</b>	WELL @ 4978.0ft (RKB - 13')
<b>Reference Site:</b>	SRC Union Pad Sec.5-T2N-R68W	<b>MD Reference:</b>	WELL @ 4978.0ft (RKB - 13')
<b>Site Error:</b>	0.0ft	<b>North Reference:</b>	True
<b>Reference Well:</b>	SRC Union 5AHZN	<b>Survey Calculation Method:</b>	Minimum Curvature
<b>Well Error:</b>	0.0ft	<b>Output errors are at</b>	2.00 sigma
<b>Reference Wellbore</b>	Wellbore #1	<b>Database:</b>	Landmark
<b>Reference Design:</b>	Plan #2 (4-08-13)	<b>Offset TVD Reference:</b>	Offset Datum

Offset Design SRC Union Pad Sec.5-T2N-R68W - SRC Union 5FD - Wellbore #1 - Plan #1 (1-03-13)													Offset Site Error:	0.0 ft
Survey Program: 0-MWD													Offset Well Error:	0.0 ft
Measured Depth (ft)	Vertical Depth (ft)	Measured Depth (ft)	Vertical Depth (ft)	Reference (ft)	Offset (ft)	Semi Major Axis Highside Toolface (°)	Offset Wellbore Centre +N/-S (ft)	+E/-W (ft)	Between Centres (ft)	Between Ellipses (ft)	Minimum Separation (ft)	Separation Factor	Warning	
0.0	0.0	0.0	0.0	0.0	0.0	-111.11	-64.8	-168.0	180.1					
100.0	100.0	98.0	98.0	0.1	0.1	-111.11	-64.8	-168.0	180.0	179.8	0.22	809.098		
200.0	200.0	198.0	198.0	0.3	0.3	-111.11	-64.8	-168.0	180.0	179.4	0.67	268.799		
300.0	300.0	298.0	298.0	0.6	0.6	-111.11	-64.8	-168.0	180.0	178.9	1.12	160.848		
400.0	400.0	398.0	398.0	0.8	0.8	-111.11	-64.8	-168.0	180.0	178.5	1.57	114.759		
500.0	500.0	498.0	498.0	1.0	1.0	-111.11	-64.8	-168.0	180.0	178.0	2.02	89.201		
600.0	600.0	598.0	598.0	1.2	1.2	-111.11	-64.8	-168.0	180.0	177.6	2.47	72.953		
700.0	700.0	698.0	698.0	1.5	1.5	-111.11	-64.8	-168.0	180.0	177.1	2.92	61.712		
800.0	800.0	798.0	798.0	1.7	1.7	-111.11	-64.8	-168.0	180.0	176.7	3.37	53.473		
900.0	900.0	898.0	898.0	1.9	1.9	-111.11	-64.8	-168.0	180.0	176.2	3.82	47.174		
1,000.0	1,000.0	998.0	998.0	2.1	2.1	-111.11	-64.8	-168.0	180.0	175.8	4.27	42.203		
1,100.0	1,100.0	1,097.3	1,097.3	2.4	2.4	-110.72	-63.8	-168.6	180.2	175.5	4.71	38.244		
1,200.0	1,200.0	1,196.5	1,196.4	2.6	2.6	-109.53	-60.4	-170.4	180.9	175.7	5.16	35.055		
1,300.0	1,300.0	1,295.4	1,295.1	2.8	2.8	-107.55	-54.9	-173.6	182.1	176.5	5.61	32.474		
1,400.0	1,400.0	1,394.8	1,394.1	3.0	3.0	-105.03	-47.7	-177.6	184.0	177.9	6.06	30.376		
1,500.0	1,500.0	1,494.4	1,493.4	3.3	3.3	-102.54	-40.4	-181.8	186.3	179.8	6.51	28.629		
1,600.0	1,600.0	1,594.1	1,592.7	3.5	3.5	-100.11	-33.1	-185.9	188.9	181.9	6.96	27.149		
1,700.0	1,700.0	1,693.7	1,692.0	3.7	3.8	-97.75	-25.8	-190.0	191.9	184.5	7.41	25.888		
1,800.0	1,800.0	1,793.3	1,791.3	3.9	4.0	-95.46	-18.6	-194.1	195.1	187.3	7.87	24.806		
1,900.0	1,900.0	1,893.0	1,890.6	4.2	4.3	-93.25	-11.3	-198.3	198.7	190.4	8.32	23.872		
2,000.0	2,000.0	1,992.6	1,989.9	4.4	4.5	-91.13	-4.0	-202.4	202.6	193.8	8.78	23.063		
2,100.0	2,100.0	2,092.3	2,089.2	4.6	4.8	-89.08	3.3	-206.5	206.7	197.5	9.25	22.358		
2,200.0	2,200.0	2,191.9	2,188.5	4.8	5.0	-87.12	10.6	-210.6	211.1	201.4	9.71	21.741		
2,300.0	2,300.0	2,291.6	2,287.8	5.1	5.3	-85.24	17.9	-214.8	215.7	205.6	10.18	21.199		
2,400.0	2,400.0	2,391.2	2,387.1	5.3	5.6	-83.44	25.2	-218.9	220.6	210.0	10.65	20.721		
2,500.0	2,500.0	2,490.9	2,486.4	5.5	5.8	-81.71	32.5	-223.0	225.7	214.5	11.12	20.299		
2,600.0	2,600.0	2,590.5	2,585.6	5.7	6.1	-80.07	39.8	-227.1	230.9	219.3	11.59	19.925		
2,700.0	2,700.0	2,690.2	2,684.9	6.0	6.3	-78.50	47.1	-231.3	236.4	224.3	12.06	19.592		
2,800.0	2,800.0	2,789.8	2,784.2	6.2	6.6	-77.00	54.3	-235.4	242.0	229.4	12.54	19.295		
2,900.0	2,900.0	2,889.5	2,883.5	6.4	6.9	-75.57	61.6	-239.5	247.7	234.7	13.02	19.030		
3,000.0	3,000.0	2,989.1	2,982.8	6.6	7.1	-74.20	68.9	-243.6	253.6	240.1	13.50	18.792		
3,100.0	3,100.0	3,088.8	3,082.2	6.8	7.4	9.00	76.2	-247.8	258.0	244.0	13.93	18.517		
3,200.0	3,199.8	3,188.6	3,181.6	7.0	7.7	10.45	83.5	-251.9	259.0	244.7	14.35	18.048		
3,300.0	3,299.5	3,288.3	3,281.0	7.3	7.9	12.06	90.8	-256.0	256.8	242.0	14.75	17.405		
3,400.0	3,398.7	3,387.8	3,380.1	7.5	8.2	13.90	98.1	-260.1	251.4	236.3	15.14	16.602		
3,500.0	3,497.5	3,487.0	3,479.0	7.7	8.5	16.06	105.4	-264.2	242.9	227.4	15.52	15.655		
3,600.0	3,595.8	3,586.0	3,577.6	8.0	8.7	18.53	112.6	-268.3	232.4	216.5	15.94	14.584		
3,700.0	3,694.1	3,684.9	3,676.1	8.2	9.0	21.22	119.8	-272.4	222.2	205.8	16.38	13.570		
3,800.0	3,792.4	3,783.8	3,774.7	8.5	9.3	24.15	127.1	-276.5	212.6	195.8	16.83	12.635		
3,900.0	3,890.8	3,882.7	3,873.2	8.8	9.5	27.36	134.3	-280.6	203.6	186.3	17.29	11.776		
4,000.0	3,989.1	3,981.6	3,971.8	9.1	9.8	30.84	141.5	-284.7	195.2	177.5	17.76	10.993		
4,100.0	4,087.4	4,080.5	4,070.4	9.4	10.0	34.62	148.8	-288.8	187.7	169.4	18.25	10.282		
4,200.0	4,185.7	4,179.4	4,168.9	9.7	10.3	38.68	156.0	-292.9	181.0	162.3	18.77	9.644		
4,300.0	4,284.0	4,278.3	4,267.5	10.1	10.6	43.03	163.2	-297.0	175.4	156.1	19.32	9.078		
4,400.0	4,382.3	4,377.2	4,366.0	10.4	10.8	47.63	170.5	-301.1	170.8	150.9	19.90	8.584		
4,500.0	4,480.7	4,476.1	4,464.6	10.7	11.1	52.45	177.7	-305.2	167.4	146.9	20.51	8.162		
4,600.0	4,579.0	4,575.0	4,563.1	11.1	11.4	57.42	185.0	-309.3	165.3	144.1	21.16	7.810		
4,700.0	4,677.3	4,673.9	4,661.7	11.4	11.6	62.49	192.2	-313.3	164.4	142.6	21.84	7.529		
4,713.5	4,690.6	4,687.3	4,675.0	11.5	11.7	63.17	193.2	-313.9	164.4	142.5	21.94	7.496 CC		
4,800.0	4,775.6	4,772.8	4,760.2	11.8	11.9	67.56	199.4	-317.4	164.9	142.4	22.55	7.315 ES		
4,900.0	4,873.9	4,871.7	4,858.8	12.1	12.2	72.57	206.7	-321.5	166.7	143.5	23.27	7.166		
5,000.0	4,972.2	4,970.7	4,957.4	12.5	12.4	77.43	213.9	-325.6	169.8	145.8	23.99	7.077		

CC - Min centre to center distance or convergent point, SF - min separation factor, ES - min ellipse separation

SRC Union Pad Sec.5-T2N-R68W - SRC Union 5FD - Wellbore #1 - Plan #1 (1-03-13)													Offset Site Error:	0.0 ft
Survey Program: 0-MWD													Offset Well Error:	0.0 ft
Reference		Offset		Semi Major Axis			Distance							Warning
Measured Depth (ft)	Vertical Depth (ft)	Measured Depth (ft)	Vertical Depth (ft)	Reference (ft)	Offset (ft)	Highside Toolface (°)	Offset Wellbore Centre +N/-S (ft)	Offset Wellbore Centre +E/-W (ft)	Between Centres (ft)	Between Ellipses (ft)	Minimum Separation (ft)	Separation Factor		
5,100.0	5,070.6	5,069.6	5,055.9	12.9	12.7	82.10	221.1	-329.7	174.0	149.3	24.71	7.042 SF		
5,200.0	5,168.9	5,168.5	5,154.5	13.2	13.0	86.52	228.4	-333.8	179.4	154.0	25.43	7.056		
5,300.0	5,267.2	5,267.4	5,253.0	13.6	13.2	90.66	235.6	-337.9	185.8	159.7	26.12	7.112		
5,400.0	5,365.5	5,366.3	5,351.6	14.0	13.5	94.51	242.8	-342.0	193.1	166.3	26.81	7.204		
5,500.0	5,463.8	5,465.2	5,450.1	14.4	13.8	98.08	250.1	-346.1	201.2	173.8	27.47	7.326		
5,600.0	5,562.1	5,564.1	5,548.7	14.7	14.0	101.35	257.3	-350.2	210.1	182.0	28.12	7.472		
5,700.0	5,660.4	5,663.0	5,647.3	15.1	14.3	104.36	264.5	-354.3	219.6	190.8	28.75	7.638		
5,800.0	5,758.8	5,761.9	5,745.8	15.5	14.6	107.12	271.8	-358.4	229.6	200.2	29.36	7.819		
5,900.0	5,857.3	5,861.0	5,844.5	15.8	14.8	109.54	279.0	-362.5	239.7	209.8	29.94	8.007		
6,000.0	5,956.3	5,960.4	5,943.6	16.1	15.1	111.06	286.3	-366.6	249.0	218.5	30.46	8.174		
6,100.0	6,055.8	6,060.0	6,042.9	16.3	15.4	111.74	293.6	-370.7	257.0	226.1	30.96	8.303		
6,200.0	6,155.6	6,159.8	6,142.3	16.5	15.7	111.66	300.9	-374.8	263.8	232.4	31.43	8.393		
6,300.0	6,255.5	6,259.5	6,241.7	16.7	15.9	110.87	308.2	-379.0	269.4	237.5	31.89	8.447		
6,400.0	6,355.5	6,359.2	6,341.0	16.9	16.2	27.63	315.5	-383.1	274.0	244.6	29.33	9.342		
6,500.0	6,455.5	6,458.8	6,440.3	17.1	16.5	26.18	322.8	-387.2	278.6	248.9	29.77	9.360		
6,600.0	6,555.2	6,558.0	6,539.1	17.2	16.7	-66.34	330.0	-391.3	281.2	248.1	33.13	8.488		
6,700.0	6,652.2	6,653.5	6,634.3	17.2	17.0	-72.29	337.0	-395.3	278.0	244.7	33.24	8.362		
6,800.0	6,742.7	6,742.0	6,722.5	17.1	17.2	-81.14	343.5	-398.9	274.3	241.0	33.23	8.254		
6,815.3	6,755.8	6,754.8	6,735.2	17.1	17.3	-82.64	344.4	-399.5	274.2	240.9	33.22	8.253		
6,900.0	6,823.6	6,820.2	6,800.3	17.0	17.4	-90.75	349.2	-402.2	278.5	245.4	33.07	8.421		
7,000.0	6,891.8	6,885.1	6,865.1	17.1	17.6	-98.27	354.0	-404.8	299.4	266.6	32.82	9.123		
7,100.0	6,944.9	6,934.5	6,914.2	17.4	17.8	-101.42	357.6	-406.9	341.4	308.5	32.92	10.373		
7,200.0	6,980.8	6,966.4	6,946.0	18.0	17.8	-98.67	359.9	-408.2	402.8	368.8	33.92	11.874		
7,300.0	6,998.3	6,979.7	6,959.3	19.0	17.9	-88.72	360.9	-408.8	477.8	442.3	35.49	13.462		
7,400.0	7,000.0	6,977.2	6,956.9	20.2	17.9	-81.89	360.7	-408.7	560.5	523.9	36.58	15.322		
7,500.0	7,000.0	6,973.1	6,952.7	21.8	17.9	-81.07	360.4	-408.5	647.9	609.9	38.06	17.024		
7,600.0	7,000.0	6,968.9	6,948.6	23.6	17.8	-80.26	360.1	-408.3	738.6	698.8	39.76	18.576		
7,700.0	7,000.0	6,964.8	6,944.4	25.6	17.8	-79.45	359.8	-408.1	831.4	789.7	41.62	19.973		
7,800.0	7,000.0	6,960.6	6,940.3	27.7	17.8	-78.64	359.5	-408.0	925.6	882.0	43.61	21.224		

<b>Company:</b>	Synergy Resources	<b>Local Co-ordinate Reference:</b>	Well SRC Union 5AHZN
<b>Project:</b>	SEC.5-T2N-R68W	<b>TVD Reference:</b>	WELL @ 4978.0ft (RKB - 13')
<b>Reference Site:</b>	SRC Union Pad Sec.5-T2N-R68W	<b>MD Reference:</b>	WELL @ 4978.0ft (RKB - 13')
<b>Site Error:</b>	0.0ft	<b>North Reference:</b>	True
<b>Reference Well:</b>	SRC Union 5AHZN	<b>Survey Calculation Method:</b>	Minimum Curvature
<b>Well Error:</b>	0.0ft	<b>Output errors are at</b>	2.00 sigma
<b>Reference Wellbore</b>	Wellbore #1	<b>Database:</b>	Landmark
<b>Reference Design:</b>	Plan #2 (4-08-13)	<b>Offset TVD Reference:</b>	Offset Datum

Offset Design													Offset Site Error:	0.0 ft
Survey Program: 0-MWD													Offset Well Error:	0.0 ft
Reference		Offset		Semi Major Axis			Distance							Warning
Measured Depth (ft)	Vertical Depth (ft)	Measured Depth (ft)	Vertical Depth (ft)	Reference (ft)	Offset (ft)	Highside Toolface (°)	Offset Wellbore Centre +N/-S (ft)	+E/-W (ft)	Between Centres (ft)	Between Ellipses (ft)	Minimum Separation (ft)	Separation Factor		
0.0	0.0	0.0	0.0	0.0	0.0	-111.33	-29.1	-74.6	80.1					
100.0	100.0	99.0	99.0	0.1	0.1	-111.33	-29.1	-74.6	80.1	79.9	0.22	358.190		
200.0	200.0	199.0	199.0	0.3	0.3	-111.33	-29.1	-74.6	80.1	79.4	0.67	119.198		
300.0	300.0	300.6	300.6	0.6	0.6	-110.74	-28.0	-74.0	79.1	78.0	1.12	70.347		
400.0	400.0	402.1	402.0	0.8	0.8	-108.83	-24.5	-71.9	76.1	74.5	1.58	48.108		
500.0	500.0	503.4	503.0	1.0	1.0	-105.29	-18.7	-68.6	71.2	69.1	2.05	34.791		
600.0	600.0	604.1	603.4	1.2	1.3	-99.50	-10.7	-63.9	64.9	62.4	2.52	25.737		
700.0	700.0	704.4	702.9	1.5	1.6	-90.40	-0.4	-57.9	58.0	55.0	3.00	19.330		
800.0	800.0	803.9	801.4	1.7	1.9	-76.64	12.0	-50.7	52.1	48.6	3.47	15.028		
890.4	890.4	893.2	889.4	1.9	2.2	-59.80	25.1	-43.1	49.8	46.0	3.87	12.878 CC		
900.0	900.0	902.6	898.7	1.9	2.2	-57.82	26.6	-42.2	49.9	45.9	3.91	12.745 ES		
1,000.0	1,000.0	1,000.4	994.6	2.1	2.6	-37.11	43.1	-32.6	54.2	49.8	4.40	12.322 SF		
1,100.0	1,100.0	1,097.1	1,088.9	2.4	3.0	-19.57	61.5	-21.9	66.0	61.0	5.00	13.210		
1,200.0	1,200.0	1,192.7	1,181.6	2.6	3.5	-7.04	81.7	-10.1	84.2	78.5	5.69	14.793		
1,300.0	1,300.0	1,287.6	1,273.0	2.8	3.9	1.50	103.7	2.7	107.0	100.5	6.43	16.645		
1,400.0	1,400.0	1,383.8	1,365.4	3.0	4.4	7.21	126.5	16.0	131.9	124.7	7.18	18.368		
1,500.0	1,500.0	1,479.9	1,457.9	3.3	5.0	11.10	149.4	29.3	157.7	149.8	7.94	19.868		
1,600.0	1,600.0	1,576.1	1,550.3	3.5	5.5	13.89	172.2	42.6	184.0	175.3	8.69	21.164		
1,700.0	1,700.0	1,672.2	1,642.8	3.7	6.0	15.99	195.1	55.9	210.6	201.1	9.45	22.285		
1,800.0	1,800.0	1,768.3	1,735.2	3.9	6.5	17.62	217.9	69.2	237.4	227.1	10.20	23.260		
1,900.0	1,900.0	1,864.5	1,827.7	4.2	7.1	18.91	240.7	82.5	264.3	253.3	10.96	24.113		
2,000.0	2,000.0	1,960.6	1,920.1	4.4	7.6	19.97	263.6	95.8	291.3	279.6	11.72	24.864		
2,100.0	2,100.0	2,056.8	2,012.6	4.6	8.1	20.85	286.4	109.1	318.4	306.0	12.47	25.531		
2,200.0	2,200.0	2,152.9	2,105.0	4.8	8.6	21.59	309.3	122.4	345.6	332.4	13.23	26.125		
2,300.0	2,300.0	2,249.1	2,197.5	5.1	9.2	22.22	332.1	135.7	372.8	358.8	13.99	26.658		
2,400.0	2,400.0	2,345.2	2,289.9	5.3	9.7	22.77	354.9	148.9	400.1	385.3	14.74	27.138		
2,500.0	2,500.0	2,441.4	2,382.3	5.5	10.2	23.24	377.8	162.2	427.4	411.9	15.50	27.573		
2,600.0	2,600.0	2,537.5	2,474.8	5.7	10.8	23.66	400.6	175.5	454.7	438.4	16.26	27.969		
2,700.0	2,700.0	2,633.7	2,567.2	6.0	11.3	24.03	423.4	188.8	482.0	465.0	17.01	28.330		
2,800.0	2,800.0	2,729.8	2,659.7	6.2	11.8	24.37	446.3	202.1	509.3	491.6	17.77	28.661		
2,900.0	2,900.0	2,826.0	2,752.1	6.4	12.4	24.66	469.1	215.4	536.7	518.2	18.53	28.966		
3,000.0	3,000.0	2,922.1	2,844.6	6.6	12.9	24.93	492.0	228.7	564.1	544.8	19.29	29.248		
3,100.0	3,100.0	3,018.1	2,936.8	6.8	13.4	106.64	514.7	242.0	591.9	577.2	14.72	40.220		
3,200.0	3,199.8	3,113.6	3,028.6	7.0	14.0	106.76	537.4	255.2	620.8	605.7	15.18	40.909		
3,300.0	3,299.5	3,208.4	3,119.9	7.3	14.5	107.09	560.0	268.3	650.8	635.2	15.63	41.641		
3,400.0	3,398.7	3,302.6	3,210.4	7.5	15.0	107.61	582.3	281.3	681.9	665.9	16.08	42.413		
3,500.0	3,497.5	3,396.0	3,300.1	7.7	15.5	108.26	604.5	294.2	714.4	697.8	16.53	43.215		
3,600.0	3,595.8	3,488.6	3,389.3	8.0	16.1	109.47	626.5	307.0	747.9	730.9	17.00	44.007		
3,700.0	3,694.1	3,581.3	3,478.3	8.2	16.6	110.74	648.5	319.8	781.9	764.4	17.48	44.725		
3,800.0	3,792.4	3,673.9	3,567.4	8.5	17.1	111.91	670.5	332.7	816.2	798.2	17.99	45.376		
3,900.0	3,890.8	3,766.6	3,656.5	8.8	17.6	112.99	692.5	345.5	850.7	832.2	18.51	45.967		
4,000.0	3,989.1	3,859.2	3,745.6	9.1	18.1	113.99	714.5	358.3	885.6	866.5	19.04	46.504		
4,100.0	4,087.4	3,951.9	3,834.6	9.4	18.7	114.91	736.5	371.1	920.6	901.0	19.59	46.993		
4,200.0	4,185.7	4,044.5	3,923.7	9.7	19.2	115.77	758.6	383.9	955.8	935.7	20.15	47.441		
4,300.0	4,284.0	4,137.1	4,012.8	10.1	19.7	116.56	780.6	396.7	991.2	970.5	20.72	47.850		

Reference Depths are relative to WELL @ 4978.0ft (RKB - 13')	Coordinates are relative to: SRC Union 5AHZN
Offset Depths are relative to Offset Datum	Coordinate System is US State Plane 1983, Colorado Northern Zone
Central Meridian is -105.500000 °	Grid Convergence at Surface is: 0.30°



# Anticollision Report

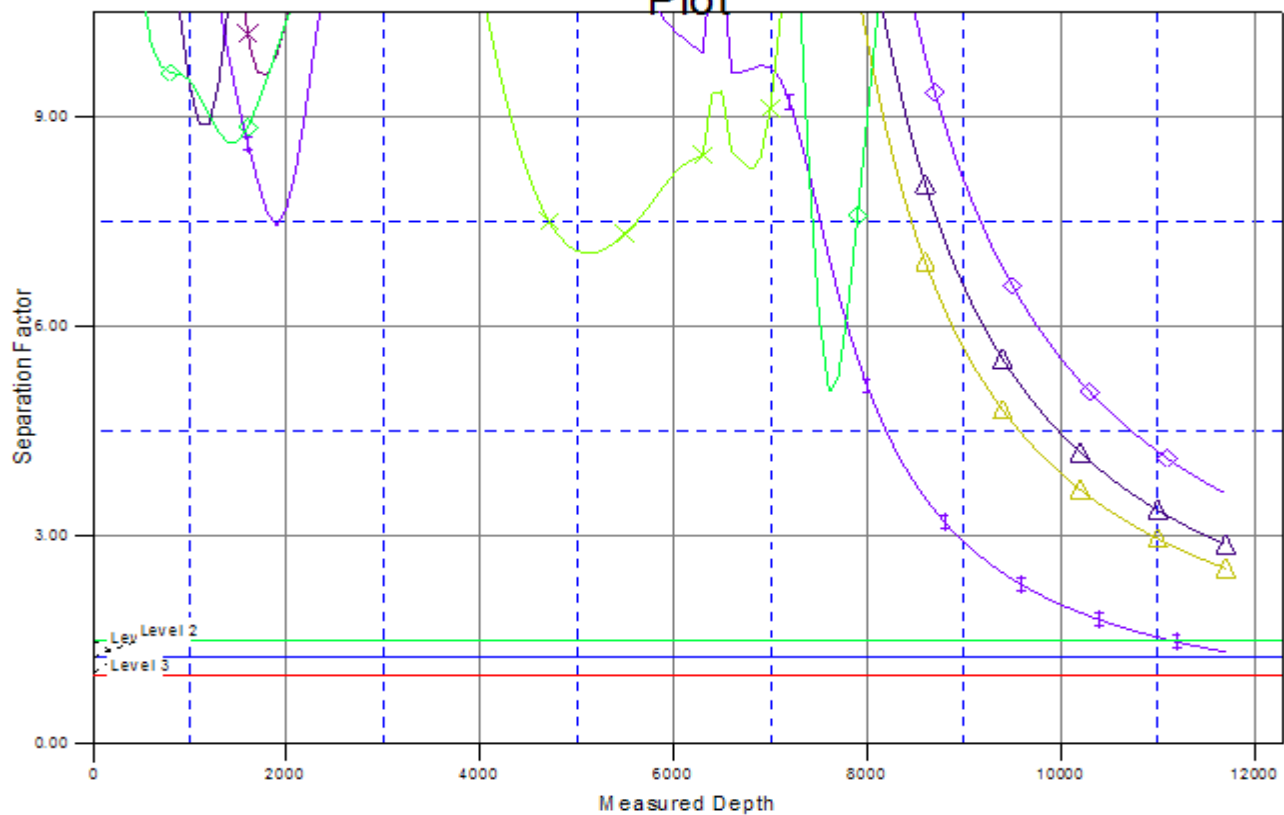
**Company:** Synergy Resources  
**Project:** SEC.5-T2N-R68W  
**Reference Site:** SRC Union Pad Sec.5-T2N-R68W  
**Site Error:** 0.0ft  
**Reference Well:** SRC Union 5AHZN  
**Well Error:** 0.0ft  
**Reference Wellbore:** Wellbore #1  
**Reference Design:** Plan #2 (4-08-13)

**Local Co-ordinate Reference:** Well SRC Union 5AHZN  
**TVD Reference:** WELL @ 4978.0ft (RKB - 13')  
**MD Reference:** WELL @ 4978.0ft (RKB - 13')  
**North Reference:** True  
**Survey Calculation Method:** Minimum Curvature  
**Output errors are at** 2.00 sigma  
**Database:** Landmark  
**Offset TVD Reference:** Offset Datum

Reference Depths are relative to WELL @ 4978.0ft (RKB - 13')  
 Offset Depths are relative to Offset Datum  
 Central Meridian is -105.500000 °

Coordinates are relative to: SRC Union 5AHZN  
 Coordinate System is US State Plane 1983, Colorado Northern Zone  
 Grid Convergence at Surface is: 0.30°

## Separation Factor Plot



## LEGEND

SRC Union 5AHZN, Wellbore #1, Plan #2 (4-08-13) V0 SRC Union 11HZN, Wellbore #1, Plan #2 (4-08-13) V0 SRC Union 11HZN, Wellbore #1, Plan #1 (1-03-13) V0 SRC Union 5JD, Wellbore #1, Plan #1 (1-03-13) V0 SRC Union 12HZN, Wellbore #1, Plan #2 (4-08-13) V0 SRC Union 11-5D, Wellbore #1, Plan #1 (1-03-13) V0 SRC Union 5FD, Wellbore #1, Plan #1 (1-03-13) V0 SRC Union 12-5D, Wellbore #1, Plan #1 (1-03-13) V0