

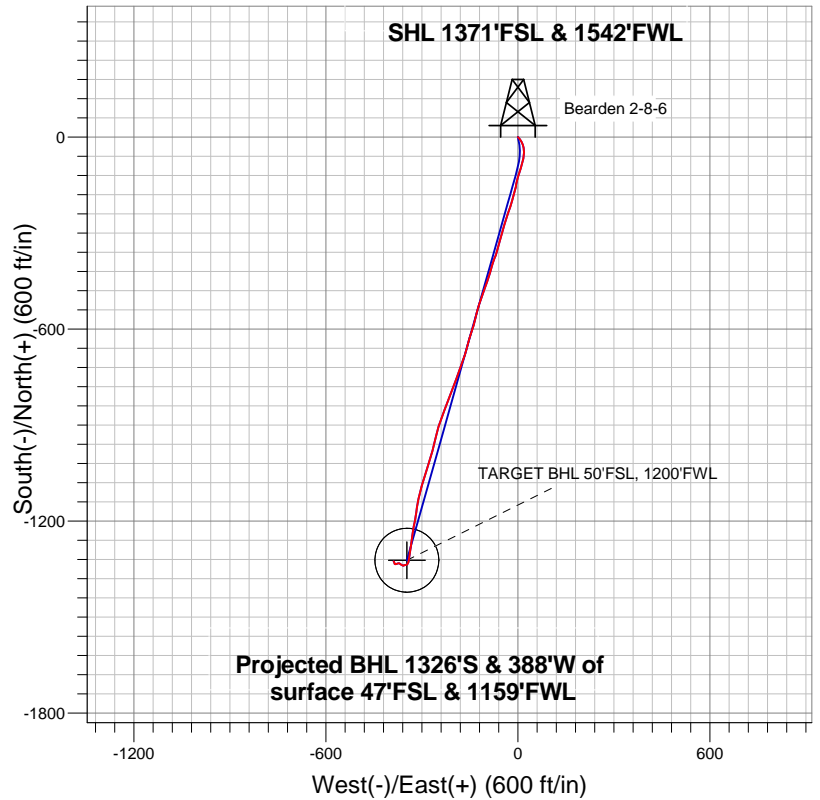
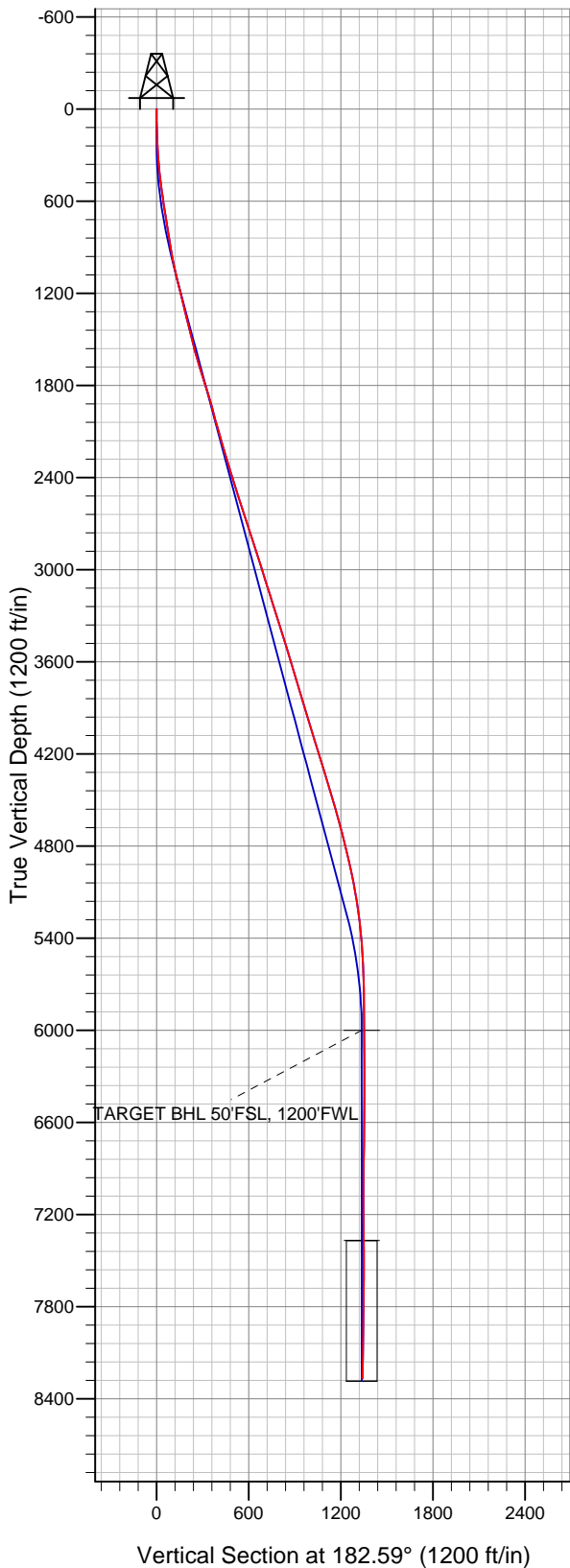


Well Name: Bearden 2-8-6

Surface Location: Bearden 2-8-6 Pad Sec.6-T1N-R68W
North American Datum 1983 US State Plane 1983 Colorado Northern Zone
Ground Elevation: 4978.0

+N/-S	+E/-W	Northing	Easting	Latitude	Longitude	Slot
0.0	0.0	1271131.86	3125946.25	40.076770	-105.049930	
		Original Well Elev WELL @ 4991.0ft (Original Well Elev)				

EnCana Oil & Gas Weld County CO



LEGEND

- Bearden 2-8-6, Wellbore #1, Plan #1 (1-22-13) V0
- Wellbore #1
- Survey #1

Final Survey Plot

Projected Final Survey -
8460'MD & 8268'TVD @ 1381'VS
0.9 deg Inc 331.2 deg AZ

Project: SEC.6-T1N-R68W
Site: Bearden 2-8-6 Pad Sec.6-T1N-R68W
Well: Bearden 2-8-6
Plan: Wellbore #1



EnCana Oil & Gas Weld County CO

SEC.6-T1N-R68W

Bearden 2-8-6 Pad Sec.6-T1N-R68W

Bearden 2-8-6

Wellbore #1

Survey: Survey #1

Standard Survey Report

14 February, 2013

Survey	Wellbore Data									
	Measured Depth (ft)	Inclination (°)	Azimuth (°)	Vertical Depth (ft)	+N/-S (ft)	+E/-W (ft)	Vertical Section (ft)	Dogleg Rate (°/100ft)	Build Rate (°/100ft)	Turn Rate (°/100ft)
Main Wellbore	0.0	0.00	0.00	0.0	0.0	0.0	0.0	0.00	0.00	0.00
	76.0	1.60	133.20	76.0	-0.7	0.8	0.7	2.11	2.11	0.00
	136.0	2.60	136.70	135.9	-2.3	2.3	2.2	1.68	1.67	5.83
	196.0	3.30	137.80	195.9	-4.6	4.4	4.4	1.17	1.17	1.83
	256.0	4.30	142.70	255.7	-7.6	6.9	7.3	1.75	1.67	8.17
	316.0	5.30	148.30	315.5	-11.8	9.8	11.3	1.84	1.67	9.33
	374.0	6.20	155.00	373.2	-16.9	12.5	16.3	1.93	1.55	11.55
	435.0	6.60	161.70	433.9	-23.2	15.0	22.5	1.39	0.66	10.98
	496.0	7.40	167.70	494.4	-30.4	16.9	29.6	1.78	1.31	9.84
	556.0	7.90	172.80	553.9	-38.2	18.3	37.4	1.40	0.83	8.50
	617.0	9.00	178.60	614.2	-47.2	18.9	46.3	2.28	1.80	9.51
	678.0	8.90	186.10	674.5	-56.6	18.5	55.7	1.92	-0.16	12.30
710.0	9.20	189.10	706.1	-61.6	17.8	60.8	1.75	0.94	9.38	

Company:	EnCana Oil & Gas Weld County CO	Local Co-ordinate Reference:	Well Bearden 2-8-6
Project:	SEC.6-T1N-R68W	TVD Reference:	WELL @ 4991.0ft (Original Well Elev)
Site:	Bearden 2-8-6 Pad Sec.6-T1N-R68W	MD Reference:	WELL @ 4991.0ft (Original Well Elev)
Well:	Bearden 2-8-6	North Reference:	True
Wellbore:	Wellbore #1	Survey Calculation Method:	Minimum Curvature
Design:	Wellbore #1	Database:	Landmark

Survey

Measured Depth (ft)	Inclination (°)	Azimuth (°)	Vertical Depth (ft)	+N/-S (ft)	+E/-W (ft)	Vertical Section (ft)	Dogleg Rate (°/100ft)	Build Rate (°/100ft)	Turn Rate (°/100ft)
869.0	9.30	196.90	863.0	-86.5	12.1	85.8	0.79	0.06	4.91
954.0	10.50	198.60	946.7	-100.4	7.6	99.9	1.45	1.41	2.00
1,040.0	12.70	195.80	1,031.0	-116.9	2.6	116.7	2.64	2.56	-3.26
1,126.0	13.60	193.70	1,114.7	-135.8	-2.4	135.8	1.18	1.05	-2.44
1,211.0	14.20	192.50	1,197.2	-155.7	-7.0	155.9	0.78	0.71	-1.41
1,297.0	13.90	195.30	1,280.7	-176.0	-12.0	176.3	0.86	-0.35	3.26
1,382.0	14.50	194.90	1,363.1	-196.1	-17.5	196.7	0.72	0.71	-0.47
1,468.0	14.60	198.10	1,446.3	-216.8	-23.6	217.7	0.94	0.12	3.72
1,554.0	14.80	200.70	1,529.5	-237.4	-30.9	238.5	0.80	0.23	3.02
1,639.0	16.40	197.00	1,611.4	-259.0	-38.2	260.5	2.22	1.88	-4.35
1,725.0	18.00	195.80	1,693.5	-283.4	-45.4	285.2	1.91	1.86	-1.40
1,810.0	17.90	196.30	1,774.4	-308.6	-52.6	310.7	0.22	-0.12	0.59
1,896.0	17.60	193.50	1,856.3	-333.9	-59.4	336.3	1.05	-0.35	-3.26
1,982.0	15.70	196.20	1,938.7	-357.7	-65.6	360.3	2.38	-2.21	3.14
2,067.0	15.70	202.10	2,020.5	-379.4	-73.2	382.4	1.88	0.00	6.94
2,153.0	16.80	196.90	2,103.1	-402.1	-81.2	405.4	2.12	1.28	-6.05
2,238.0	16.70	195.60	2,184.5	-425.6	-88.0	429.2	0.46	-0.12	-1.53
2,324.0	17.60	199.10	2,266.6	-449.8	-95.6	453.7	1.59	1.05	4.07
2,410.0	18.10	199.80	2,348.5	-474.7	-104.4	478.9	0.63	0.58	0.81
2,495.0	17.80	199.00	2,429.4	-499.4	-113.1	504.0	0.46	-0.35	-0.94
2,581.0	17.10	198.30	2,511.4	-523.8	-121.3	528.8	0.85	-0.81	-0.81
2,666.0	18.20	194.20	2,592.4	-548.6	-128.5	553.8	1.95	1.29	-4.82
2,752.0	18.90	194.40	2,673.9	-575.1	-135.3	580.6	0.82	0.81	0.23
2,838.0	19.50	196.90	2,755.2	-602.3	-142.9	608.1	1.18	0.70	2.91
2,923.0	18.40	197.70	2,835.6	-628.6	-151.1	634.8	1.33	-1.29	0.94
3,009.0	17.90	194.20	2,917.3	-654.4	-158.5	660.9	1.39	-0.58	-4.07
3,094.0	18.10	199.00	2,998.1	-679.5	-166.0	686.3	1.76	0.24	5.65
3,180.0	18.40	200.20	3,079.8	-704.9	-175.0	712.1	0.56	0.35	1.40
3,266.0	17.90	197.60	3,161.5	-730.2	-183.7	737.8	1.11	-0.58	-3.02
3,351.0	19.00	201.40	3,242.1	-755.6	-192.7	763.5	1.92	1.29	4.47
3,437.0	18.00	199.80	3,323.7	-781.1	-202.3	789.4	1.30	-1.16	-1.86
3,522.0	18.60	200.50	3,404.4	-806.2	-211.5	814.9	0.75	0.71	0.82
3,608.0	17.80	201.10	3,486.1	-831.3	-221.0	840.4	0.96	-0.93	0.70
3,694.0	17.40	201.80	3,568.1	-855.5	-230.6	865.0	0.53	-0.47	0.81
3,779.0	17.60	200.20	3,649.1	-879.3	-239.7	889.3	0.61	0.24	-1.88
3,865.0	18.10	195.60	3,731.0	-904.4	-247.8	914.7	1.74	0.58	-5.35
3,950.0	17.20	194.40	3,812.0	-929.3	-254.5	939.8	1.14	-1.06	-1.41
4,036.0	16.40	193.20	3,894.3	-953.4	-260.4	964.2	1.01	-0.93	-1.40
4,122.0	17.00	195.30	3,976.7	-977.4	-266.5	988.4	0.99	0.70	2.44
4,207.0	17.00	196.70	4,058.0	-1,001.3	-273.3	1,012.6	0.48	0.00	1.65
4,293.0	19.20	197.60	4,139.7	-1,026.8	-281.2	1,038.4	2.58	2.56	1.05
4,378.0	17.80	196.50	4,220.3	-1,052.6	-289.1	1,064.6	1.70	-1.65	-1.29
4,464.0	16.80	196.70	4,302.4	-1,077.1	-296.5	1,089.4	1.16	-1.16	0.23
4,550.0	16.40	195.60	4,384.9	-1,100.7	-303.3	1,113.3	0.59	-0.47	-1.28
4,635.0	17.20	194.20	4,466.2	-1,124.4	-309.6	1,137.3	1.05	0.94	-1.65
4,721.0	16.60	188.10	4,548.5	-1,148.9	-314.5	1,161.9	2.18	-0.70	-7.09
4,806.0	16.10	187.90	4,630.1	-1,172.6	-317.8	1,185.8	0.59	-0.59	-0.24
4,892.0	15.00	190.40	4,712.9	-1,195.4	-321.4	1,208.7	1.50	-1.28	2.91
4,978.0	13.40	190.40	4,796.3	-1,216.1	-325.2	1,229.6	1.86	-1.86	0.00
5,063.0	12.70	188.10	4,879.1	-1,235.1	-328.3	1,248.6	1.03	-0.82	-2.71
5,149.0	11.90	188.40	4,963.1	-1,253.2	-331.0	1,266.9	0.93	-0.93	0.35
5,234.0	11.20	189.30	5,046.4	-1,270.0	-333.6	1,283.8	0.85	-0.82	1.06
5,320.0	9.90	187.40	5,131.0	-1,285.6	-335.9	1,299.4	1.56	-1.51	-2.21
5,406.0	8.30	186.10	5,215.9	-1,299.1	-337.5	1,313.0	1.88	-1.86	-1.51

Company:	EnCana Oil & Gas Weld County CO	Local Co-ordinate Reference:	Well Bearden 2-8-6
Project:	SEC.6-T1N-R68W	TVD Reference:	WELL @ 4991.0ft (Original Well Elev)
Site:	Bearden 2-8-6 Pad Sec.6-T1N-R68W	MD Reference:	WELL @ 4991.0ft (Original Well Elev)
Well:	Bearden 2-8-6	North Reference:	True
Wellbore:	Wellbore #1	Survey Calculation Method:	Minimum Curvature
Design:	Wellbore #1	Database:	Landmark

Survey										
Measured Depth (ft)	Inclination (°)	Azimuth (°)	Vertical Depth (ft)	+N/-S (ft)	+E/-W (ft)	Vertical Section (ft)	Dogleg Rate (°/100ft)	Build Rate (°/100ft)	Turn Rate (°/100ft)	
5,491.0	6.60	187.90	5,300.2	-1,310.0	-338.8	1,324.0	2.02	-2.00	2.12	
5,577.0	5.20	188.80	5,385.7	-1,318.8	-340.1	1,332.8	1.63	-1.63	1.05	
5,662.0	3.90	196.90	5,470.4	-1,325.3	-341.5	1,339.4	1.70	-1.53	9.53	
5,748.0	3.00	205.30	5,556.3	-1,330.2	-343.3	1,344.3	1.20	-1.05	9.77	
5,919.0	1.60	233.90	5,727.1	-1,335.6	-347.2	1,349.9	1.03	-0.82	16.73	
6,090.0	1.70	269.80	5,898.1	-1,337.0	-351.6	1,351.6	0.60	0.06	20.99	
6,191.7	1.31	256.31	5,999.8	-1,337.3	-354.3	1,352.0	0.52	-0.39	-13.26	
TARGET BHL 50°FSL, 1200°FSL										
6,262.0	1.10	241.90	6,070.0	-1,337.8	-355.6	1,352.5	0.52	-0.29	-20.51	
6,433.0	0.50	244.00	6,241.0	-1,338.9	-357.8	1,353.7	0.35	-0.35	1.23	
6,604.0	0.70	298.50	6,412.0	-1,338.8	-359.4	1,353.6	0.34	0.12	31.87	
6,775.0	0.90	288.80	6,583.0	-1,337.8	-361.5	1,352.8	0.14	0.12	-5.67	
6,946.0	1.40	303.40	6,753.9	-1,336.2	-364.6	1,351.3	0.34	0.29	8.54	
7,118.0	1.90	313.20	6,925.9	-1,333.1	-368.4	1,348.4	0.33	0.29	5.70	
7,289.0	2.20	258.40	7,096.8	-1,331.9	-373.7	1,347.4	1.11	0.18	-32.05	
7,460.0	1.80	247.00	7,267.7	-1,333.6	-379.4	1,349.3	0.33	-0.23	-6.67	
7,560.5	1.25	255.51	7,368.1	-1,334.5	-381.9	1,350.3	0.59	-0.55	8.47	
TARGET CIRCLE 50°FSL & 1200°FSL										
7,631.0	0.90	267.50	7,438.6	-1,334.7	-383.2	1,350.6	0.59	-0.50	17.00	
7,802.0	0.50	324.30	7,609.6	-1,334.1	-384.9	1,350.1	0.44	-0.23	33.22	
7,974.0	0.70	350.70	7,781.6	-1,332.5	-385.6	1,348.5	0.20	0.12	15.35	
8,145.0	0.90	343.30	7,952.6	-1,330.2	-386.1	1,346.2	0.13	0.12	-4.33	
8,316.0	0.90	330.10	8,123.6	-1,327.7	-387.2	1,343.8	0.12	0.00	-7.72	
8,417.0	0.90	331.20	8,224.6	-1,326.3	-387.9	1,342.5	0.02	0.00	1.09	
8,460.0	0.90	331.20	8,267.6	-1,325.7	-388.3	1,341.9	0.00	0.00	0.00	

Checked By: _____	Approved By: _____	Date: _____
-------------------	--------------------	-------------