

AXIA ENERGY
BULLDOG #17-11H-893 & #17-21H-893
 LOCATED IN MOFFATT COUNTY, COLORADO
 SECTION 17, T8N, R93W, 6th P.M.

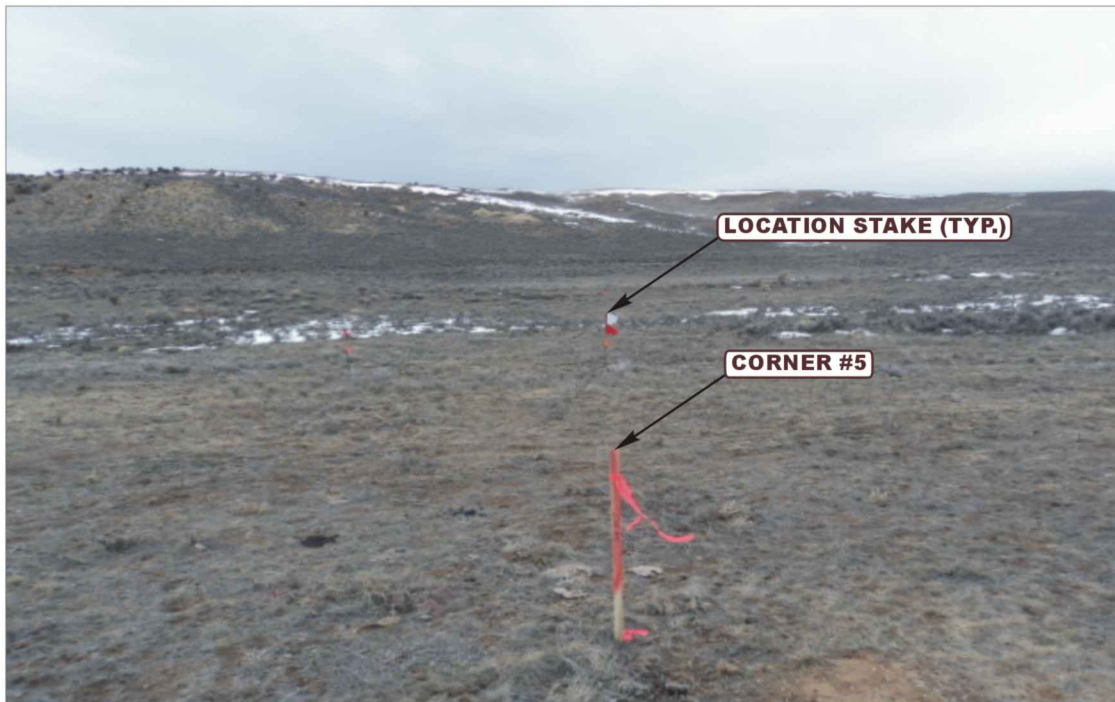


PHOTO: VIEW FROM CORNER #5 TO LOCATION STAKE

CAMERA ANGLE: NORTHWESTERLY



PHOTO: VIEW FROM BEGINNING OF THE PROPOSED ACCESS

CAMERA ANGLE: WESTERLY



- Since 1964 -

U E L S Uintah Engineering & Land Surveying
 85 South 200 East Vernal, Utah 84078
 (435) 789-1017 * FAX (435) 789-1813

LOCATION PHOTOS			03	28	13	PHOTO P1
TAKEN BY: G.M.			MONTH	DAY	YEAR	
DRAWN BY: A.T.			REVISED: 00-00-00			

AXIA ENERGY
BULLDOG #17-11H-893 & #17-21H-893
 LOCATED IN MOFFATT COUNTY, COLORADO
 SECTION 17, T8N, R93W, 6th P.M.



PHOTO: VIEW OF LOCATION STAKE

CAMERA ANGLE: NORTHERLY



PHOTO: VIEW OF LOCATION STAKE

CAMERA ANGLE: EASTERLY



- Since 1964 -

U
E
L
S Uintah Engineering & Land Surveying
 85 South 200 East Vernal, Utah 84078
 (435) 789-1017 * FAX (435) 789-1813

LOCATION PHOTOS			03	28	13	PHOTO P2
			MONTH	DAY	YEAR	
TAKEN BY: G.M.		DRAWN BY: A.T.		REVISED: 00-00-00		

AXIA ENERGY
BULLDOG #17-11H-893 & #17-21H-893
 LOCATED IN MOFFATT COUNTY, COLORADO
 SECTION 17, T8N, R93W, 6th P.M.



PHOTO: VIEW OF LOCATION STAKE

CAMERA ANGLE: SOUTHERLY



PHOTO: VIEW OF LOCATION STAKE

CAMERA ANGLE: WESTERLY



- Since 1964 -

U&LS Uintah Engineering & Land Surveying
 85 South 200 East Vernal, Utah 84078
 (435) 789-1017 * FAX (435) 789-1813

LOCATION PHOTOS			03	28	13	PHOTO P3
TAKEN BY: G.M.			MONTH	DAY	YEAR	
DRAWN BY: A.T.			REVISED: 00-00-00			