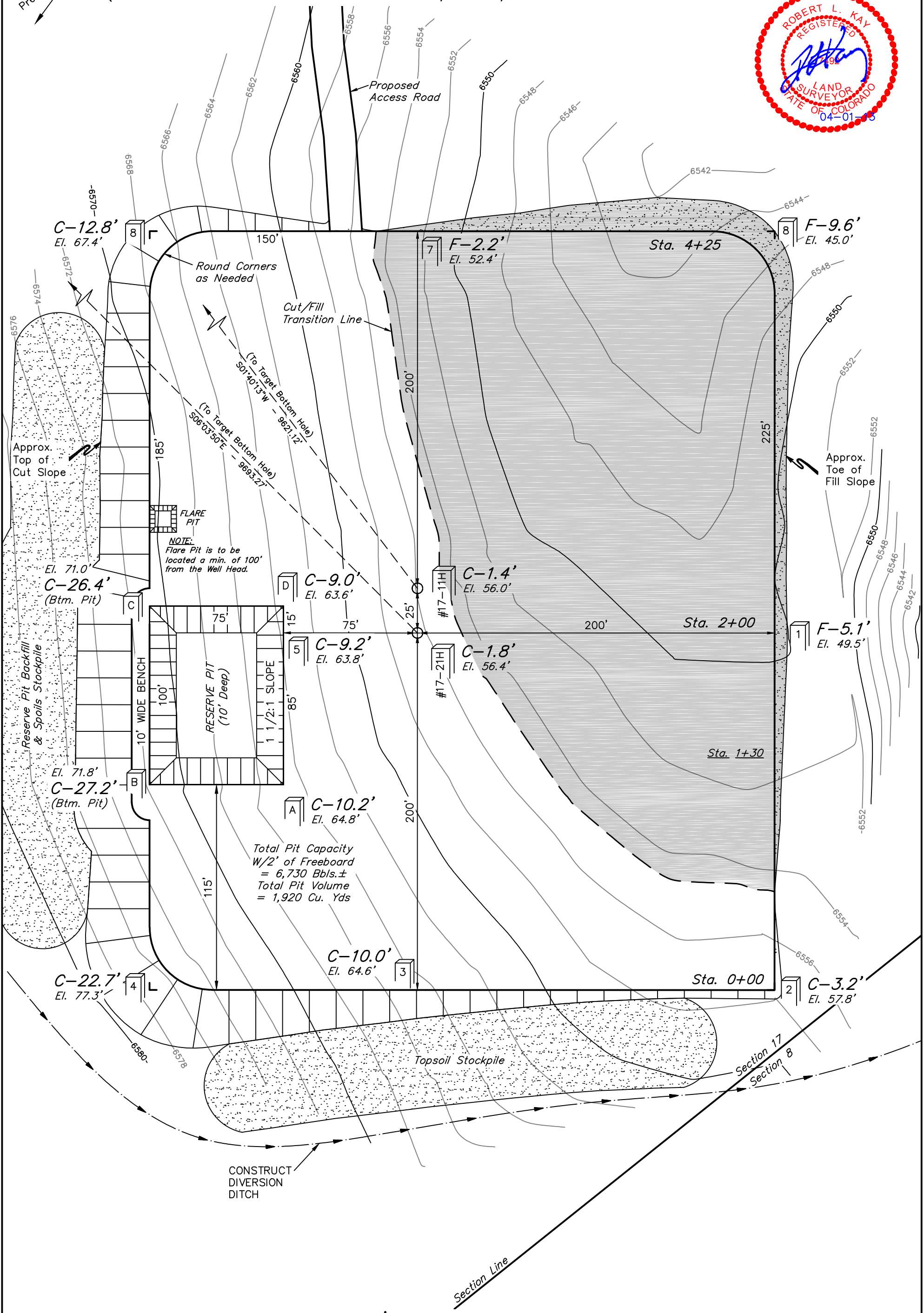


AXIA ENERGY
CONSTRUCTION LAYOUT FOR
BULLDOG #17-11H-893 & #17-21H-893
SECTION 17, T8N, R93W, 6th. P.M.
NW 1/4 NW 1/4

FIGURE #1

SCALE: 1" = 50'
DATE: 03-28-13
DRAWN BY: J.G.G.



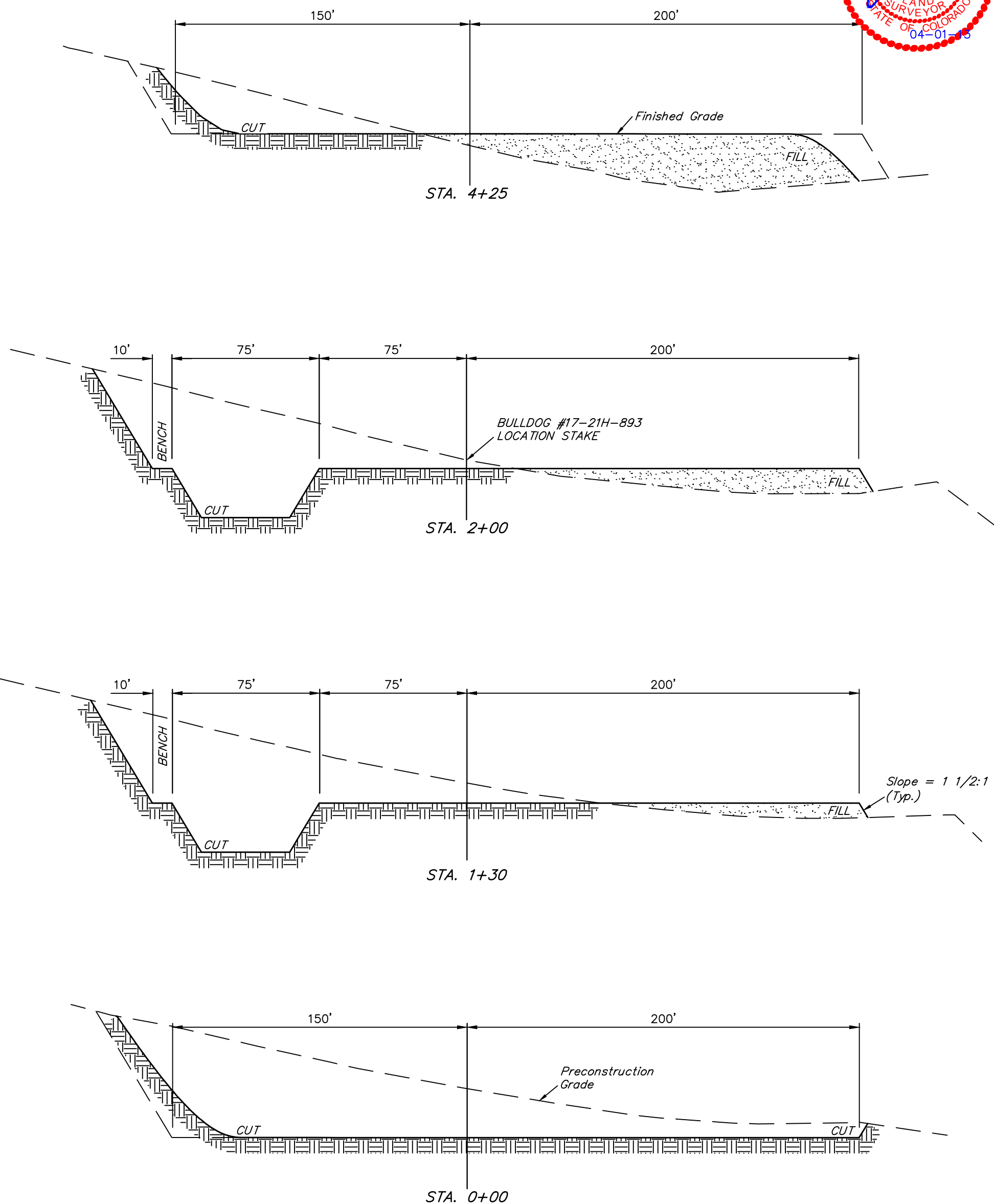
Elev. Ungraded Ground At #17-21H-893 Loc. Stake = 6556.4'
FINISHED GRADE ELEV. AT #17-21H-893 LOC. STAKE = 6554.6'

UINTAH ENGINEERING & LAND SURVEYING
85 So. 200 East * Vernal, Utah 84078 * (435) 789-1017

1" = 20'
X-Section
Scale
1" = 50'
DATE: 03-28-13
DRAWN BY: J.G.G.

AXIA ENERGY
CONSTRUCTION LAYOUT CROSS SECTIONS FOR
BULLDOG #17-11H-893 & #17-21H-893
SECTION 17, T8N, R93W, 6th. P.M.
NW 1/4 NW 1/4

FIGURE #2



NOTE:
Topsoil should not be
Stripped Below Finished
Grade on Substructure Area.

* NOTE:
FILL QUANTITY INCLUDES
5% FOR COMPACTION

APPROXIMATE YARDAGES

(6") Topsoil Stripping = 3,240 Cu. Yds.
Remaining Location = 30,830 Cu. Yds.
TOTAL CUT = 34,070 CU. YDS.
FILL = 14,120 CU. YDS.

EXCESS MATERIAL = 19,950 Cu. Yds.
Topsoil & Pit Backfill = 4,200 Cu. Yds.
(1/2 Pit Vol.)
EXCESS UNBALANCE = 15,750 Cu. Yds.
(After Interim Rehabilitation)

APPROXIMATE ACREAGES

WELL SITE DISTURBANCE = ± 4.726 ACRES
ACCESS ROAD DISTURBANCE = ± 13.654 ACRES
TOTAL = ± 18.380 ACRES

UINTAH ENGINEERING & LAND SURVEYING
85 So. 200 East * Vernal, Utah 84078 * (435) 789-1017