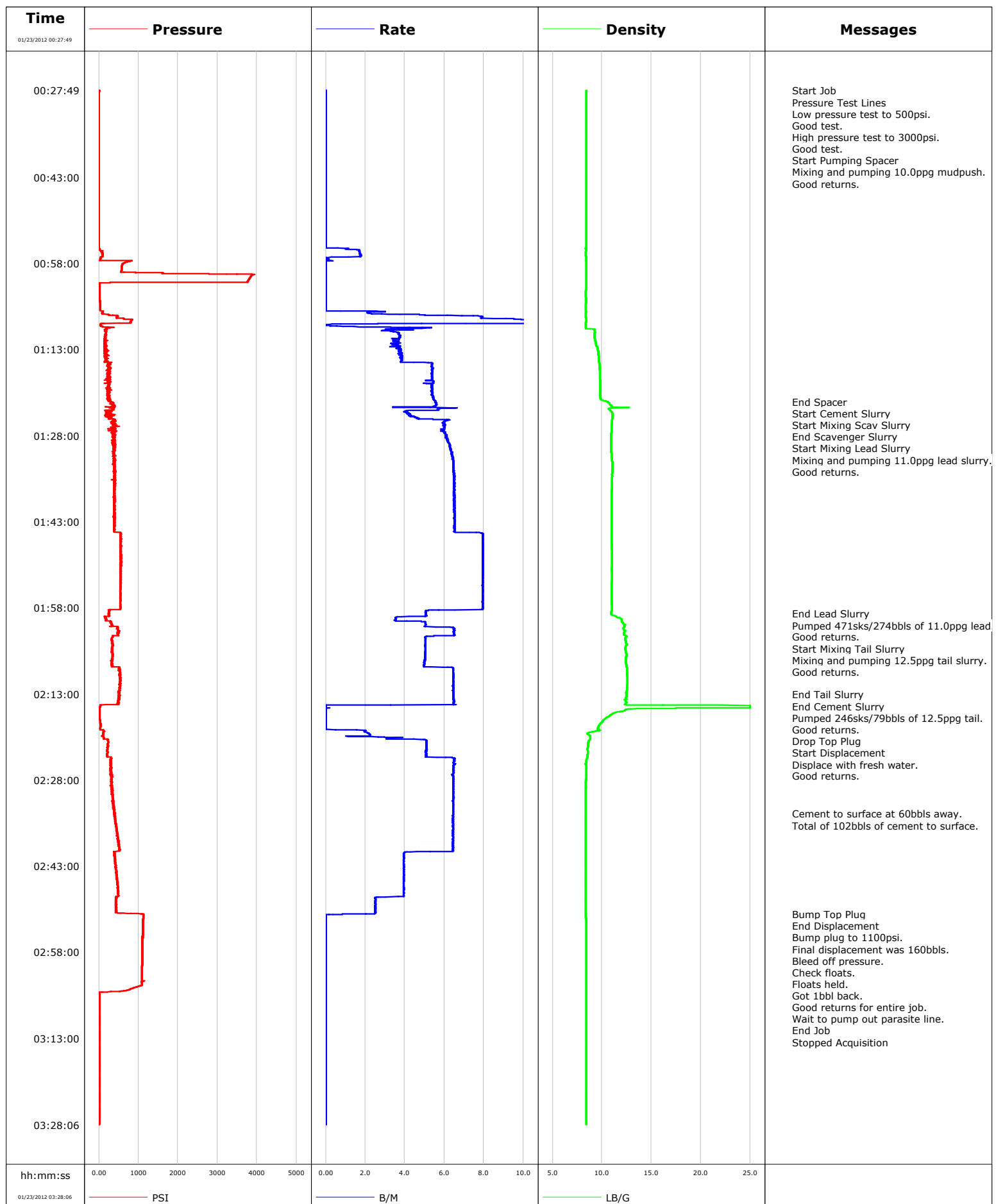


Well	DW 8608F-28	Client	ENCANA
Field	DOUBLE WILLOW	SIR No.	BQMF-00616
Engineer	Jeff Patterson/ T. Willardson	Job Type	9 5/8" SURFACE
Country	United States	Job Date	01-22-2012

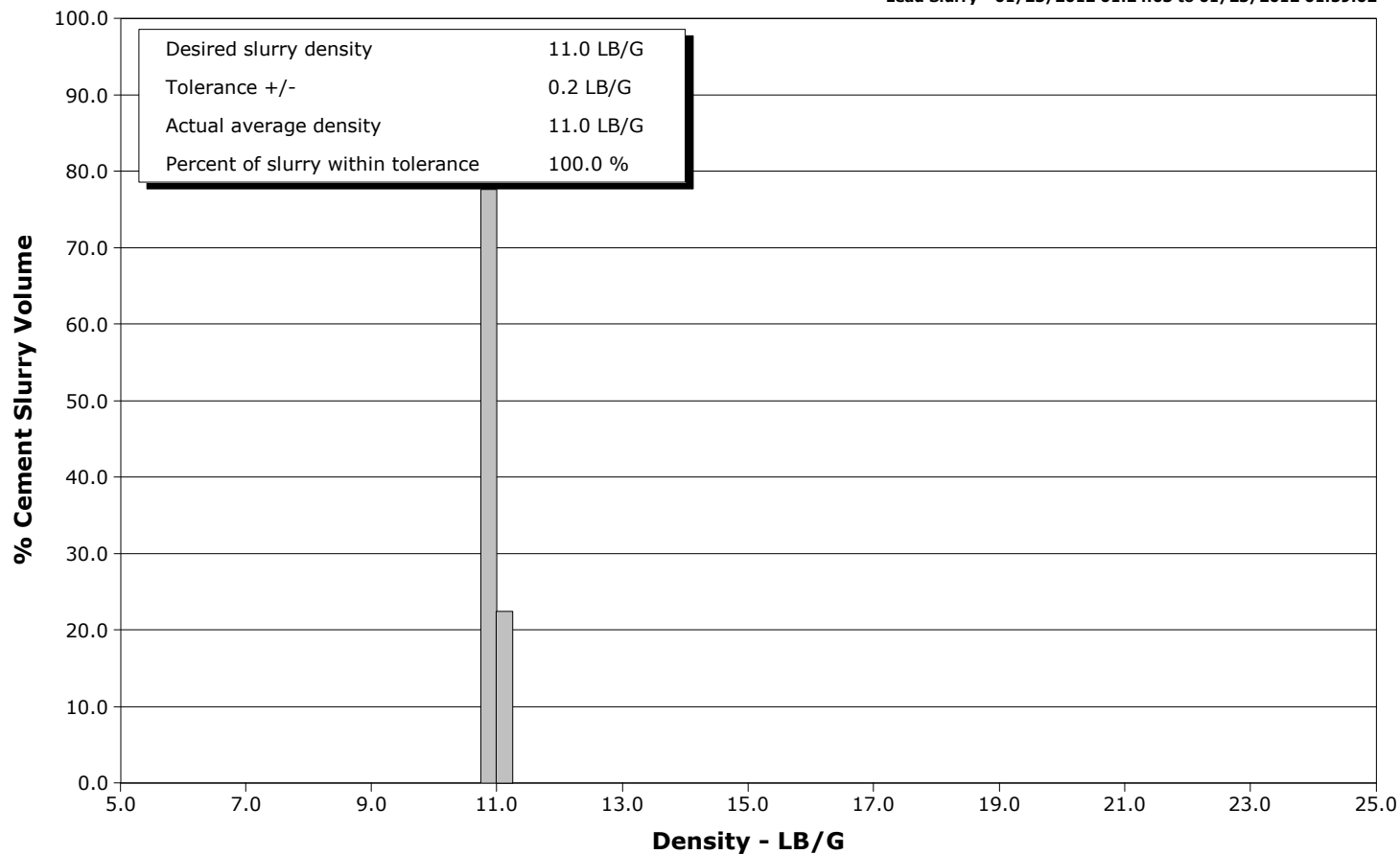


Schlumberger Cementing Qa/Qc Density Report

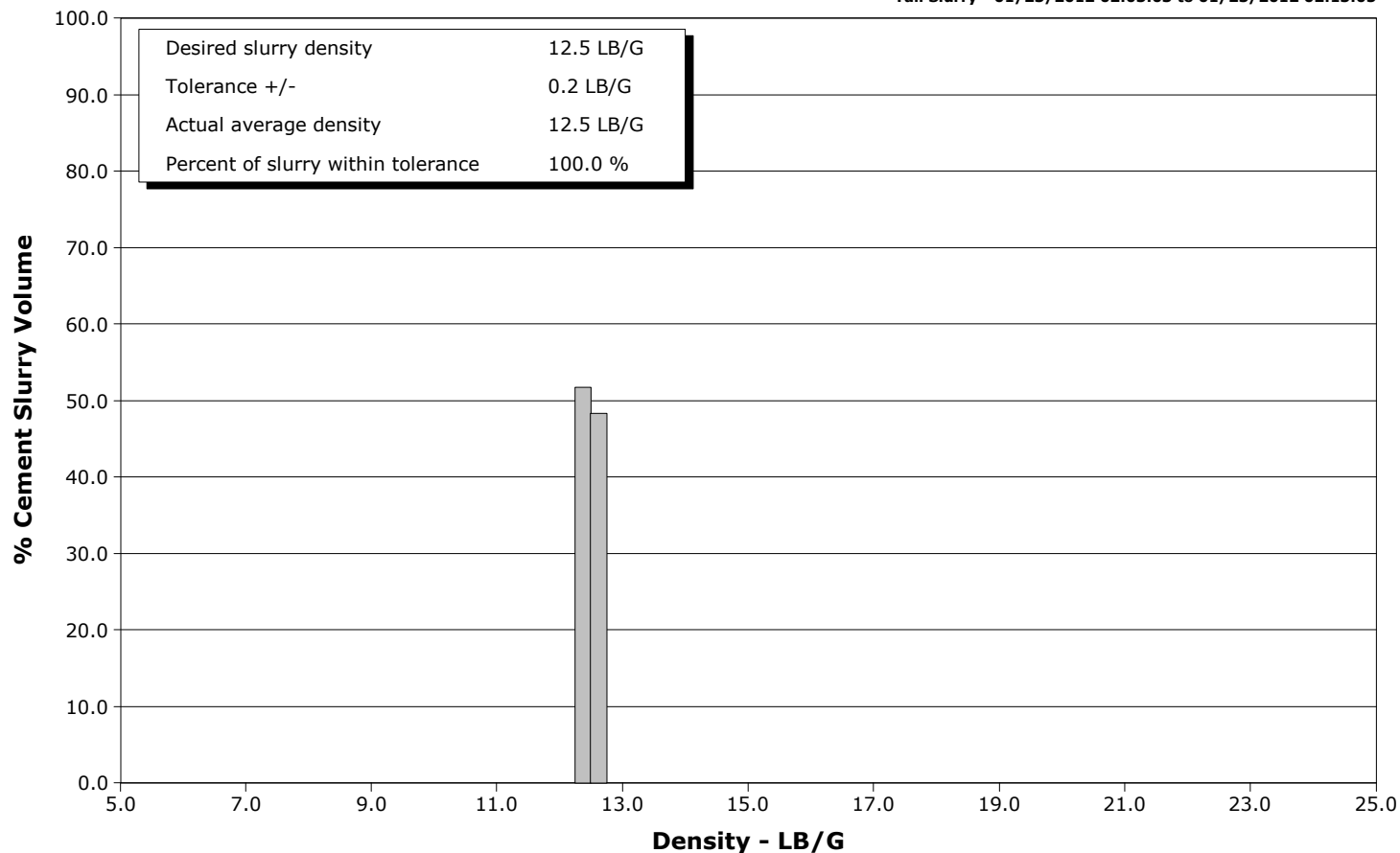
Well DW 8608F-28
Field DOUBLE WILLOW
Engineer Jeff Patterson/ T. Willardson
Country United States

Client ENCANA
SIR No. BQMF-00616
Job Type 9 5/8" SURFACE
Job Date 01-22-2012

Lead Slurry - 01/23/2012 01:24:03 to 01/23/2012 01:59:02



Tail Slurry - 01/23/2012 02:03:03 to 01/23/2012 02:13:05





Cementing Service Report

				Customer ENCANA		Job Number BQMF-00616				
Well DW 8608F-28 DW 8608F-28			Location (legal) P28		Schlumberger Location Grand Junction, Colorado		Job Start Jan/22/2012			
Field DOUBLE WILLOW		Formation Name/Type SHALE		Deviation 0 deg	Bit Size 14.8 in	Well MD 2142.0 ft		Well TVD 2142.0 ft		
County GARFIELD		State/Province Colorado		BHP	BHST 110 degF	BHCT 91 degF	Pore Press. Gradient			
Well Master 0631292214		API/UWI								
Rig Name patterson 308	Drilled For Gas	Service Via Land	Casing/Liner							
			Depth, ft	Size, in	Weight, lb/ft	Grade	Thread			
Offshore Zone	Well Class New	Well Type Development	2142.0	9.630	36.0	J55	8RD			
			0.0	0.000	0.0					
Drilling Fluid Type		Max. Density	Plastic Viscosity	Tubing/Drill Pipe						
				Depth,	Size,	Weight,	Grade	Thread		
Service Line Cementing	Job Type 9 5/8" SURFACE									
Max. Allowed Tub. Press 3000 psi	Max. Allowed Ann. Press	WH Connection 9 5/8" CEMENT HEAD	Perforations/Open Hole							
			Top,	Bottom,		No. of Shots	Total Interval			
Service Instructions CEMENT SURFACE CASING WITH. 50BBLs 10.0PPG MUDPUSH. 741SKS 11.0PPG LEAD. YIELD=2.87 246SKS 12.5PPG TAIL. YIELD= 1.81 DISPLACE WITH WATER.							Diameter			
			Treat Down Casing		Displacement 162.0 bbl		Packer Type		Packer Depth	
			Tubing Vol.		Casing Vol. 165.6 bbl		Annular Vol. 262.0 bbl		Openhole Vol. 429.0 bbl	
Casing/Tubing Secured <input checked="" type="checkbox"/>		1 Hole Vol. Circulated prior to Cement <input checked="" type="checkbox"/>		Casing Tools		Squeeze Job				
Lift Pressure 1060 psi			Shoe Type Guide			Squeeze Type				
Pipe Rotated <input type="checkbox"/>		Pipe Reciprocated <input type="checkbox"/>		Shoe Depth 2142.0 ft		Tool Type				
No. Centralizers		Top Plugs 1	Bottom Plugs	Stage Tool Type		Tool Depth				
Cement Head Type Single			Stage Tool Depth		Tail Pipe Size					
Job Scheduled For Jan/22/2012		Arrived on Location Jan/22/2012	Leave Location Jan/22/2012	Collar Type Float		Tail Pipe Depth				
				Collar Depth 2094.0 ft		Sqz. Total Vol.				
Date	Time 24-hr clock	Treating Pressure PSI	Flow Rate B/M	Density LB/G	Volume BBL	Message				
01/23/2012	00:06:34					Started Acquisition				
01/23/2012	00:27:49					Start Job				
01/23/2012	00:27:49	8	0.0	8.39	0.0					
01/23/2012	00:27:51					Pressure Test Lines				
01/23/2012	00:27:51	7	0.0	8.39	0.0					
01/23/2012	00:27:52					Low pressure test to 500psi.				
01/23/2012	00:27:52					Good test.				
01/23/2012	00:27:52	7	0.0	8.39	0.0					
01/23/2012	00:27:53					High pressure test to 3000psi.				
01/23/2012	00:27:53					Good test.				
01/23/2012	00:27:53	7	0.0	8.39	0.0					
01/23/2012	00:27:54					Start Pumping Spacer				
01/23/2012	00:27:54	7	0.0	8.39	0.0					
01/23/2012	00:27:55					Mixing and pumping 10.0ppg mudpush.				
01/23/2012	00:27:55	7	0.0	8.39	0.0					
01/23/2012	00:27:56					Good returns.				
01/23/2012	00:27:56	6	0.0	8.39	0.0					
01/23/2012	00:28:14	-1	0.0	8.39	0.0					
01/23/2012	00:29:54	-2	0.0	8.41	0.0					
01/23/2012	00:31:34	-2	0.0	8.41	0.0					
01/23/2012	00:33:14	-1	0.0	8.41	0.0					

Well			Field		Job Start	Customer	Job Number
DW 8608F-28 DW 8608F-28			DOUBLE WILLOW		Jan/22/2012	ENCANA	BQMF-00616
Date	Time 24-hr clock	Treating Pressure PSI	Flow Rate B/M	Density LB/G	Volume BBL	Message	
01/23/2012	00:36:34	-1	0.0	8.40	0.0		
01/23/2012	00:38:14	-1	0.0	8.40	0.0		
01/23/2012	00:39:54	-1	0.0	8.40	0.0		
01/23/2012	00:41:34	-1	0.0	8.39	0.0		
01/23/2012	00:43:14	-1	0.0	8.39	0.0		
01/23/2012	00:44:54	-1	0.0	8.39	0.0		
01/23/2012	00:46:34	-2	0.0	8.39	0.0		
01/23/2012	00:48:14	-1	0.0	8.39	0.0		
01/23/2012	00:49:54	-1	0.0	8.39	0.0		
01/23/2012	00:51:34	-1	0.0	8.39	0.0		
01/23/2012	00:53:14	-1	0.0	8.39	0.0		
01/23/2012	00:54:54	-5	0.0	8.39	0.0		
01/23/2012	00:56:34	89	1.8	8.37	1.9		
01/23/2012	00:58:14	591	0.0	8.38	2.6		
01/23/2012	00:59:54	3488	0.0	8.38	2.6		
01/23/2012	01:01:34	20	0.0	8.38	2.6		
01/23/2012	01:03:14	21	0.0	8.38	2.6		
01/23/2012	01:04:54	25	0.0	8.38	2.6		
01/23/2012	01:06:34	90	2.1	8.38	3.2		
01/23/2012	01:08:14	796	11.4	8.38	15.8		
01/23/2012	01:09:54	181	3.4	9.27	22.1		
01/23/2012	01:11:34	161	3.7	9.32	28.2		
01/23/2012	01:13:14	182	3.7	9.61	34.3		
01/23/2012	01:14:54	185	3.8	9.69	40.6		
01/23/2012	01:16:34	207	5.4	9.76	49.0		
01/23/2012	01:18:14	250	5.4	9.80	57.9		
01/23/2012	01:19:54	232	5.4	9.82	66.9		
01/23/2012	01:21:34	256	5.5	9.85	75.9		
01/23/2012	01:22:06					End Spacer	
01/23/2012	01:22:06	313	5.6	10.54	78.8		
01/23/2012	01:22:07					Start Cement Slurry	
01/23/2012	01:22:07	313	5.6	10.54	78.9		
01/23/2012	01:22:08					Start Mixing Scav Slurry	
01/23/2012	01:22:08	321	5.6	10.57	79.0		
01/23/2012	01:23:14	333	6.7	11.14	85.1		
01/23/2012	01:24:02					End Scavenger Slurry	
01/23/2012	01:24:02	252	4.1	11.04	89.0		
01/23/2012	01:24:03					Start Mixing Lead Slurry	
01/23/2012	01:24:03	293	4.2	11.04	89.0		
01/23/2012	01:24:04					Mixing and pumping 11.0ppg lead slurry.	
01/23/2012	01:24:04	210	4.2	11.04	89.1		
01/23/2012	01:24:05					Good returns.	
01/23/2012	01:24:05	210	4.2	11.05	89.2		
01/23/2012	01:24:54	277	4.6	11.05	92.7		
01/23/2012	01:26:34	300	6.0	10.95	102.4		
01/23/2012	01:28:14	338	6.1	10.91	112.4		
01/23/2012	01:29:54	395	6.3	10.91	122.7		
01/23/2012	01:31:34	424	6.4	10.95	133.2		
01/23/2012	01:33:14	383	6.5	11.07	144.0		
01/23/2012	01:34:54	412	6.5	11.03	154.7		
01/23/2012	01:36:34	386	6.5	11.00	165.6		
01/23/2012	01:38:14	387	6.5	10.97	176.4		
01/23/2012	01:39:54	390	6.5	10.96	187.2		
01/23/2012	01:41:34	417	6.5	10.97	198.0		

Well			Field		Job Start	Customer		Job Number
DW 8608F-28 DW 8608F-28			DOUBLE WILLOW		Jan/22/2012	ENCANA		BQMF-00616
Date	Time 24-hr clock	Treating Pressure PSI	Flow Rate B/M	Density LB/G	Volume BBL	Message		
01/23/2012	01:44:54	531	7.6	10.97	219.7			
01/23/2012	01:46:34	541	7.9	10.98	233.0			
01/23/2012	01:48:14	564	7.9	10.99	246.2			
01/23/2012	01:49:54	552	7.9	11.00	259.4			
01/23/2012	01:51:34	544	7.9	10.98	272.6			
01/23/2012	01:53:14	539	7.9	10.98	285.9			
01/23/2012	01:54:54	531	7.9	10.93	299.1			
01/23/2012	01:56:34	545	7.9	10.96	312.3			
01/23/2012	01:58:14	537	7.9	10.99	325.5			
01/23/2012	01:59:02					End Lead Slurry		
01/23/2012	01:59:02	258	5.1	10.90	330.0			
01/23/2012	01:59:07					Pumped 471sks/274bbbls of 11.0ppg lead.		
01/23/2012	01:59:07					Good returns.		
01/23/2012	01:59:07	252	5.1	10.92	330.5			
01/23/2012	01:59:54	177	3.5	11.89	333.9			
01/23/2012	02:01:34	468	6.5	12.13	341.9			
01/23/2012	02:03:03					Start Mixing Tail Slurry		
01/23/2012	02:03:03	352	5.1	12.47	351.3			
01/23/2012	02:03:04					Mixing and pumping 12.5ppg tail slurry.		
01/23/2012	02:03:04					Good returns.		
01/23/2012	02:03:04	350	5.0	12.46	351.4			
01/23/2012	02:03:14	338	5.0	12.34	352.2			
01/23/2012	02:04:54	324	5.0	12.36	360.6			
01/23/2012	02:06:34	345	5.0	12.45	369.0			
01/23/2012	02:08:14	362	5.0	12.48	377.4			
01/23/2012	02:09:54	523	6.4	12.55	387.9			
01/23/2012	02:11:34	533	6.5	12.55	398.7			
01/23/2012	02:13:05					End Tail Slurry		
01/23/2012	02:13:05	521	6.5	12.46	408.4			
01/23/2012	02:13:07					End Cement Slurry		
01/23/2012	02:13:07	514	6.5	12.46	408.7			
01/23/2012	02:13:08					Pumped 246sks/79bbbls of 12.5ppg tail.		
01/23/2012	02:13:08					Good returns.		
01/23/2012	02:13:08	507	6.5	12.46	408.8			
01/23/2012	02:13:10					Drop Top Plug		
01/23/2012	02:13:10	504	6.4	12.46	409.0			
01/23/2012	02:13:11					Start Displacement		
01/23/2012	02:13:11	500	6.4	12.46	409.1			
01/23/2012	02:13:12					Displace with fresh water.		
01/23/2012	02:13:12	504	6.5	12.46	409.2			
01/23/2012	02:13:13					Good returns.		
01/23/2012	02:13:13	504	6.5	12.46	409.3			
01/23/2012	02:13:14	486	6.5	12.46	409.4			
01/23/2012	02:14:54	502	6.4	12.30	420.2			
01/23/2012	02:16:34	17	0.0	11.01	420.6			
01/23/2012	02:18:14	38	0.0	9.84	420.6			
01/23/2012	02:19:54	103	2.2	8.53	421.9			
01/23/2012	02:21:34	227	5.1	8.61	427.7			
01/23/2012	02:23:14	224	5.1	8.55	436.1			
01/23/2012	02:24:54	297	6.5	8.41	445.8			
01/23/2012	02:26:34	318	6.5	8.39	456.5			
01/23/2012	02:28:14	302	6.4	8.38	467.3			
01/23/2012	02:29:54	334	6.4	8.38	478.0			
01/23/2012	02:31:34	343	6.4	8.38	488.8			

Well			Field		Job Start	Customer		Job Number
DW 8608F-28 DW 8608F-28			DOUBLE WILLOW		Jan/22/2012	ENCANA		BQMF-00616
Date	Time 24-hr clock	Treating Pressure PSI	Flow Rate B/M	Density LB/G	Volume BBL	Message		
01/23/2012	02:33:55					Cement to surface at 60bbls away.		
01/23/2012	02:33:55	389	6.4	8.38	503.9			
01/23/2012	02:33:56					Total of 102bbls of cement to surface.		
01/23/2012	02:33:56	389	6.4	8.38	504.0			
01/23/2012	02:34:54	412	6.4	8.38	510.2			
01/23/2012	02:36:34	431	6.4	8.38	520.9			
01/23/2012	02:38:14	490	6.4	8.38	531.6			
01/23/2012	02:39:54	514	6.4	8.38	542.3			
01/23/2012	02:41:34	406	3.9	8.38	550.4			
01/23/2012	02:43:14	418	3.9	8.38	557.0			
01/23/2012	02:44:54	443	3.9	8.38	563.6			
01/23/2012	02:46:34	473	3.9	8.38	570.1			
01/23/2012	02:48:14	486	3.9	8.38	576.7			
01/23/2012	02:49:54	439	2.5	8.38	581.1			
01/23/2012	02:51:26					Bump Top Plug		
01/23/2012	02:51:26					End Displacement		
01/23/2012	02:51:26	1108	0.8	8.38	584.9			
01/23/2012	02:51:28					Bump plug to 1100psi.		
01/23/2012	02:51:28					Final displacement was 160bbls.		
01/23/2012	02:51:28					Bleed off pressure.		
01/23/2012	02:51:28	1135	0.4	8.38	585.0			
01/23/2012	02:51:29					Check floats.		
01/23/2012	02:51:29					Floats held.		
01/23/2012	02:51:29					Got 1bbl back.		
01/23/2012	02:51:29					Good returns for entire job.		
01/23/2012	02:51:29	1135	0.1	8.38	585.0			
01/23/2012	02:51:30					Wait to pump out parasite line.		
01/23/2012	02:51:30	1116	0.1	8.38	585.0			
01/23/2012	02:51:34	1122	0.0	8.38	585.0			
01/23/2012	02:53:14	1110	0.0	8.38	585.0			
01/23/2012	02:54:54	1104	0.0	8.39	585.0			
01/23/2012	02:56:34	1100	0.0	8.39	585.0			
01/23/2012	02:58:14	1096	0.0	8.39	585.0			
01/23/2012	02:59:54	1092	0.0	8.39	585.0			
01/23/2012	03:01:34	1088	0.0	8.39	585.0			
01/23/2012	03:03:14	1085	0.0	8.39	585.0			
01/23/2012	03:04:54	537	0.0	8.39	585.0			
01/23/2012	03:05:42					End Job		
01/23/2012	03:05:42	10	0.0	8.39	585.0			
01/23/2012	03:06:34	11	0.0	8.39	585.0			
01/23/2012	03:08:14	11	0.0	8.39	585.0			
01/23/2012	03:09:54	11	0.0	8.39	585.0			
01/23/2012	03:11:34	11	0.0	8.39	585.0			
01/23/2012	03:13:14	11	0.0	8.39	585.0			
01/23/2012	03:14:54	11	0.0	8.39	585.0			
01/23/2012	03:16:34	11	0.0	8.39	585.0			
01/23/2012	03:18:14	10	0.0	8.39	585.0			
01/23/2012	03:19:54	10	0.0	8.39	585.0			
01/23/2012	03:21:34	10	0.0	8.39	585.0			
01/23/2012	03:23:14	10	0.0	8.39	585.0			
01/23/2012	03:24:54	9	0.0	8.39	585.0			
01/23/2012	03:26:34	9	0.0	8.39	585.0			

Well DW 8608F-28 DW 8608F-28	Field DOUBLE WILLOW	Job Start Jan/22/2012	Customer ENCANA	Job Number BQMF-00616
--	-------------------------------	---------------------------------	---------------------------	---------------------------------

Post Job Summary

Average Pump Rates, bbl/min					Volume of Fluid Injected, bbl			
Slurry 6.5	N2	Mud	Maximum Rate 8.0	Total Slurry 320.0	Mud	Spacer 50.0	N2	
Treating Pressure Summary, psi					Breakdown Fluid			
Maximum 3000	Final 1100	Average 300	Bump Plug to 1100	Breakdown	Type	Volume	Density	
Avg. N2 Percent		Designed Slurry Volume 320.0 bbl	Displacement 162.0 bbl	Mix Water Temp 60 degF	Cement Circulated to Surface? <input checked="" type="checkbox"/>	Volume 102.0 bbl		
					Washed Thru Perfs <input type="checkbox"/>	To		
Customer or Authorized Representative RANDY BURKE			Schlumberger Supervisor Jeff Patterson/ T. Willardson			Circulation Lost <input type="checkbox"/>	Job Completed <input checked="" type="checkbox"/>	
					-		-	