

Synergy Resources

Well Name: SRC Union 11HZC

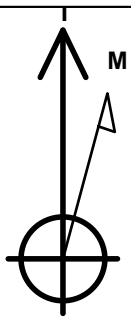
Surface Location: SRC Union Pad Sec.5-T2N-R68W
North American Datum 1983 , US State Plane 1983 , Colorado Northern Zone

Ground Elevation: 4963.0

+N/-S	+E/-W	Northing	Easting	Latitude	Longitude	Slot
0.0	0.0	1305169.76	3129889.07	40.170152	-105.035203	
RKB - 13' WELL @ 4976.0ft (RKB - 13')						

WELLBORE TARGET DETAILS

Name	TVD	+N/-S	+E/-W	Shape
HARDLINES BHL 460'FEL	-1.0	-942.4	4521.4	Polygon
HARDLINES SHL 460'FWL	-1.0	-942.4	110.2	Polygon
BHL 526'FNL,460'FEL	7310.0	1189.9	4541.4	Point
Landing pt 528'FNL & 510'FWL	7310.0	1181.8	176.0	Point
T1 - SRC Union 11HZC	7310.0	1181.8	206.0	Point



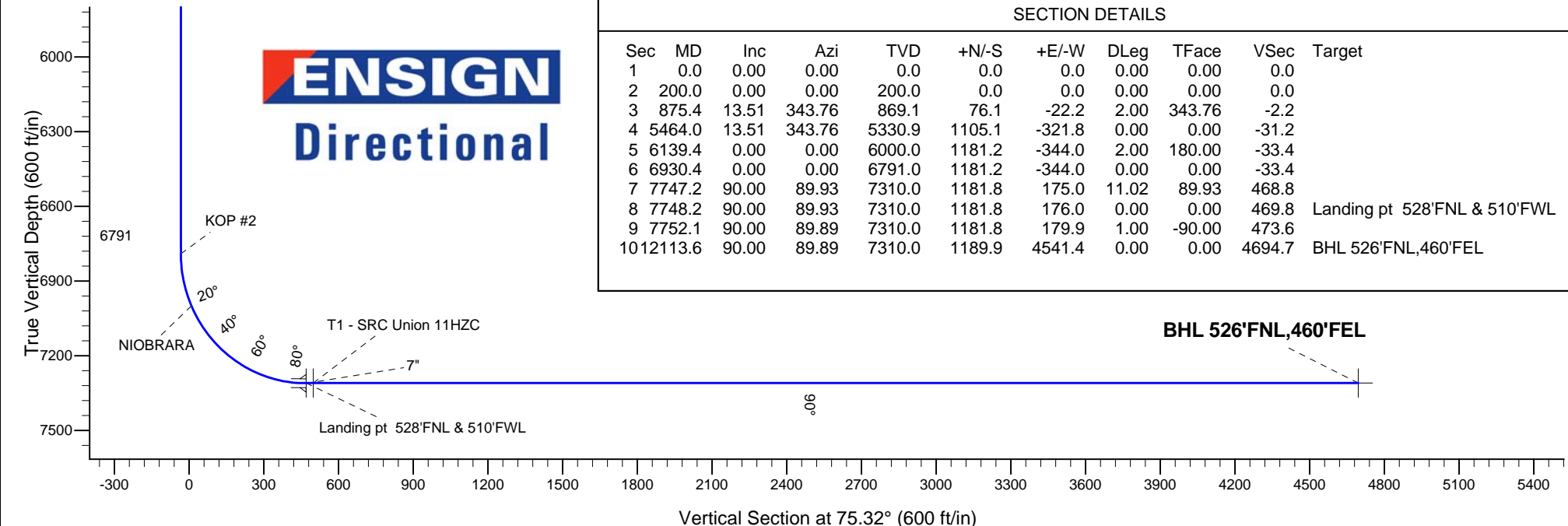
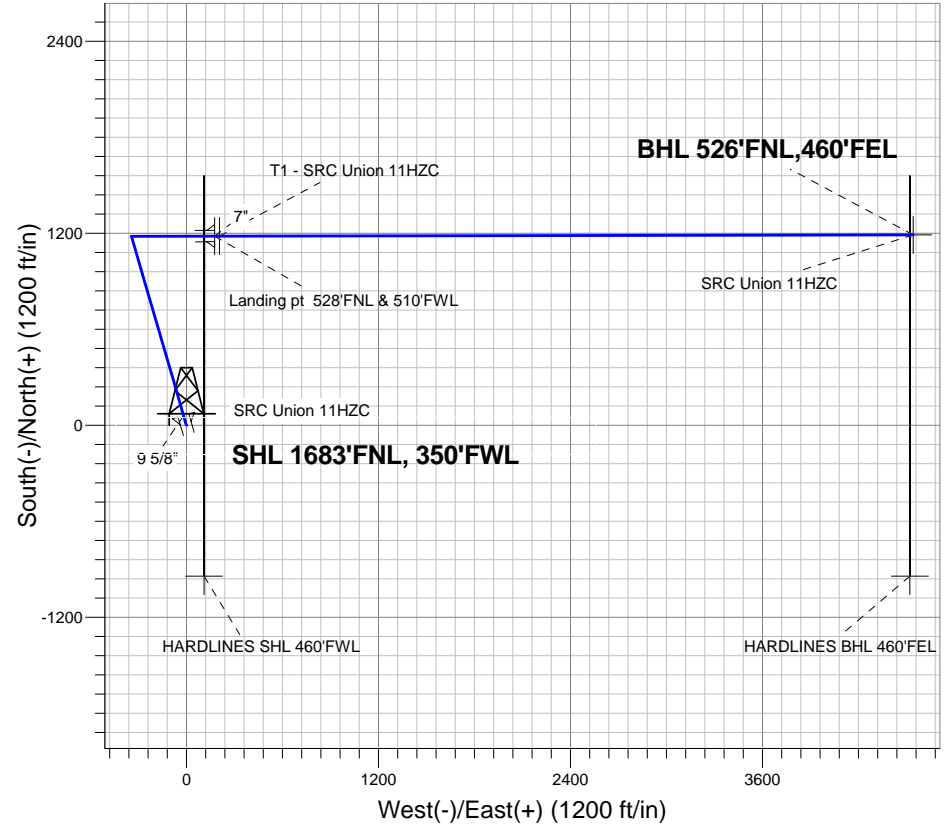
Azimuths to True North
Magnetic North: 8.74°

Magnetic Field
Strength: 52789.3nT
Dip Angle: 66.76°
Date: 4/8/2013
Model: IGRF2010

ANNOTATIONS

TVD	MD	Annotation
200.0	200.0	KOP #1
6791.0	6930.4	KOP #2

SRC Union Pad Sec.5-T2N-R68W
SRC Union 11HZC
Plan #2 (4-08-13)





Directional

Synergy Resources

SEC.5-T2N-R68W

SRC Union Pad Sec.5-T2N-R68W

SRC Union 11HZC

Wellbore #1

Plan: Plan #2 (4-08-13)

Standard Planning Report

08 April, 2013

Plan Sections										
Measured Depth (ft)	Inclination (°)	Azimuth (°)	Vertical Depth (ft)	+N/-S (ft)	+E/-W (ft)	Dogleg Rate (°/100ft)	Build Rate (°/100ft)	Turn Rate (°/100ft)	TFO (°)	Target
0.0	0.00	0.00	0.0	0.0	0.0	0.00	0.00	0.00	0.00	
200.0	0.00	0.00	200.0	0.0	0.0	0.00	0.00	0.00	0.00	
875.4	13.51	343.76	869.1	76.1	-22.2	2.00	2.00	0.00	343.76	
5,464.0	13.51	343.76	5,330.9	1,105.1	-321.8	0.00	0.00	0.00	0.00	
6,139.4	0.00	0.00	6,000.0	1,181.2	-344.0	2.00	-2.00	0.00	180.00	
6,930.4	0.00	0.00	6,791.0	1,181.2	-344.0	0.00	0.00	0.00	0.00	
7,747.2	90.00	89.93	7,310.0	1,181.8	175.0	11.02	11.02	0.00	89.93	
7,748.2	90.00	89.93	7,310.0	1,181.8	176.0	0.00	0.00	0.00	0.00	Landing pt 528°FNL
7,752.1	90.00	89.89	7,310.0	1,181.8	179.9	1.00	0.00	-1.00	-90.00	
12,113.6	90.00	89.89	7,310.0	1,189.9	4,541.4	0.00	0.00	0.00	0.00	BHL 526°FNL,460°F

Database:	Landmark	Local Co-ordinate Reference:	Well SRC Union 11HZC
Company:	Synergy Resources	TVD Reference:	WELL @ 4976.0ft (RKB - 13')
Project:	SEC.5-T2N-R68W	MD Reference:	WELL @ 4976.0ft (RKB - 13')
Site:	SRC Union Pad Sec.5-T2N-R68W	North Reference:	True
Well:	SRC Union 11HZC	Survey Calculation Method:	Minimum Curvature
Wellbore:	Wellbore #1		
Design:	Plan #2 (4-08-13)		

Planned Survey									
Measured Depth (ft)	Inclination (°)	Azimuth (°)	Vertical Depth (ft)	+N/-S (ft)	+E/-W (ft)	Vertical Section (ft)	Dogleg Rate (°/100ft)	Build Rate (°/100ft)	Turn Rate (°/100ft)
0.0	0.00	0.00	0.0	0.0	0.0	0.0	0.00	0.00	0.00
HARDLINES BHL 460'FEL - HARDLINES SHL 460'FWL									
40.0	0.00	0.00	40.0	0.0	0.0	0.0	0.00	0.00	0.00
80.0	0.00	0.00	80.0	0.0	0.0	0.0	0.00	0.00	0.00
120.0	0.00	0.00	120.0	0.0	0.0	0.0	0.00	0.00	0.00
160.0	0.00	0.00	160.0	0.0	0.0	0.0	0.00	0.00	0.00
200.0	0.00	0.00	200.0	0.0	0.0	0.0	0.00	0.00	0.00
KOP #1									
240.0	0.80	343.76	240.0	0.3	-0.1	0.0	2.00	2.00	0.00
280.0	1.60	343.76	280.0	1.1	-0.3	0.0	2.00	2.00	0.00
320.0	2.40	343.76	320.0	2.4	-0.7	-0.1	2.00	2.00	0.00
360.0	3.20	343.76	359.9	4.3	-1.2	-0.1	2.00	2.00	0.00
400.0	4.00	343.76	399.8	6.7	-2.0	-0.2	2.00	2.00	0.00
440.0	4.80	343.76	439.7	9.6	-2.8	-0.3	2.00	2.00	0.00
480.0	5.60	343.76	479.6	13.1	-3.8	-0.4	2.00	2.00	0.00
520.0	6.40	343.76	519.3	17.1	-5.0	-0.5	2.00	2.00	0.00
560.0	7.20	343.76	559.1	21.7	-6.3	-0.6	2.00	2.00	0.00
600.0	8.00	343.76	598.7	26.8	-7.8	-0.8	2.00	2.00	0.00
640.0	8.80	343.76	638.3	32.4	-9.4	-0.9	2.00	2.00	0.00
680.0	9.60	343.76	677.8	38.5	-11.2	-1.1	2.00	2.00	0.00
720.0	10.40	343.76	717.1	45.2	-13.2	-1.3	2.00	2.00	0.00
760.0	11.20	343.76	756.4	52.4	-15.3	-1.5	2.00	2.00	0.00
800.0	12.00	343.76	795.6	60.1	-17.5	-1.7	2.00	2.00	0.00
9 5/8"									
840.0	12.80	343.76	834.7	68.4	-19.9	-1.9	2.00	2.00	0.00
875.4	13.51	343.76	869.1	76.1	-22.2	-2.2	2.00	2.00	0.00
880.0	13.51	343.76	873.6	77.1	-22.5	-2.2	0.00	0.00	0.00
920.0	13.51	343.76	912.5	86.1	-25.1	-2.4	0.00	0.00	0.00
960.0	13.51	343.76	951.4	95.1	-27.7	-2.7	0.00	0.00	0.00
1,000.0	13.51	343.76	990.3	104.0	-30.3	-2.9	0.00	0.00	0.00
1,040.0	13.51	343.76	1,029.2	113.0	-32.9	-3.2	0.00	0.00	0.00
1,080.0	13.51	343.76	1,068.1	122.0	-35.5	-3.4	0.00	0.00	0.00
1,120.0	13.51	343.76	1,107.0	130.9	-38.1	-3.7	0.00	0.00	0.00
1,160.0	13.51	343.76	1,145.9	139.9	-40.7	-4.0	0.00	0.00	0.00
1,200.0	13.51	343.76	1,184.8	148.9	-43.4	-4.2	0.00	0.00	0.00
1,240.0	13.51	343.76	1,223.7	157.9	-46.0	-4.5	0.00	0.00	0.00
1,280.0	13.51	343.76	1,262.6	166.8	-48.6	-4.7	0.00	0.00	0.00
1,320.0	13.51	343.76	1,301.5	175.8	-51.2	-5.0	0.00	0.00	0.00
1,360.0	13.51	343.76	1,340.4	184.8	-53.8	-5.2	0.00	0.00	0.00
1,400.0	13.51	343.76	1,379.2	193.7	-56.4	-5.5	0.00	0.00	0.00
1,440.0	13.51	343.76	1,418.1	202.7	-59.0	-5.7	0.00	0.00	0.00
1,480.0	13.51	343.76	1,457.0	211.7	-61.6	-6.0	0.00	0.00	0.00
1,520.0	13.51	343.76	1,495.9	220.6	-64.3	-6.2	0.00	0.00	0.00
1,560.0	13.51	343.76	1,534.8	229.6	-66.9	-6.5	0.00	0.00	0.00
1,600.0	13.51	343.76	1,573.7	238.6	-69.5	-6.7	0.00	0.00	0.00
1,640.0	13.51	343.76	1,612.6	247.6	-72.1	-7.0	0.00	0.00	0.00
1,680.0	13.51	343.76	1,651.5	256.5	-74.7	-7.3	0.00	0.00	0.00
1,720.0	13.51	343.76	1,690.4	265.5	-77.3	-7.5	0.00	0.00	0.00
1,760.0	13.51	343.76	1,729.3	274.5	-79.9	-7.8	0.00	0.00	0.00
1,800.0	13.51	343.76	1,768.2	283.4	-82.5	-8.0	0.00	0.00	0.00
1,840.0	13.51	343.76	1,807.1	292.4	-85.2	-8.3	0.00	0.00	0.00
1,880.0	13.51	343.76	1,846.0	301.4	-87.8	-8.5	0.00	0.00	0.00
1,920.0	13.51	343.76	1,884.9	310.3	-90.4	-8.8	0.00	0.00	0.00

Database:	Landmark	Local Co-ordinate Reference:	Well SRC Union 11HZC
Company:	Synergy Resources	TVD Reference:	WELL @ 4976.0ft (RKB - 13')
Project:	SEC.5-T2N-R68W	MD Reference:	WELL @ 4976.0ft (RKB - 13')
Site:	SRC Union Pad Sec.5-T2N-R68W	North Reference:	True
Well:	SRC Union 11HZC	Survey Calculation Method:	Minimum Curvature
Wellbore:	Wellbore #1		
Design:	Plan #2 (4-08-13)		

Planned Survey									
Measured Depth (ft)	Inclination (°)	Azimuth (°)	Vertical Depth (ft)	+N/-S (ft)	+E/-W (ft)	Vertical Section (ft)	Dogleg Rate (°/100ft)	Build Rate (°/100ft)	Turn Rate (°/100ft)
1,960.0	13.51	343.76	1,923.8	319.3	-93.0	-9.0	0.00	0.00	0.00
2,000.0	13.51	343.76	1,962.7	328.3	-95.6	-9.3	0.00	0.00	0.00
2,040.0	13.51	343.76	2,001.5	337.3	-98.2	-9.5	0.00	0.00	0.00
2,080.0	13.51	343.76	2,040.4	346.2	-100.8	-9.8	0.00	0.00	0.00
2,120.0	13.51	343.76	2,079.3	355.2	-103.4	-10.0	0.00	0.00	0.00
2,160.0	13.51	343.76	2,118.2	364.2	-106.1	-10.3	0.00	0.00	0.00
2,200.0	13.51	343.76	2,157.1	373.1	-108.7	-10.5	0.00	0.00	0.00
2,240.0	13.51	343.76	2,196.0	382.1	-111.3	-10.8	0.00	0.00	0.00
2,280.0	13.51	343.76	2,234.9	391.1	-113.9	-11.1	0.00	0.00	0.00
2,320.0	13.51	343.76	2,273.8	400.0	-116.5	-11.3	0.00	0.00	0.00
2,360.0	13.51	343.76	2,312.7	409.0	-119.1	-11.6	0.00	0.00	0.00
2,400.0	13.51	343.76	2,351.6	418.0	-121.7	-11.8	0.00	0.00	0.00
2,440.0	13.51	343.76	2,390.5	427.0	-124.3	-12.1	0.00	0.00	0.00
2,480.0	13.51	343.76	2,429.4	435.9	-127.0	-12.3	0.00	0.00	0.00
2,520.0	13.51	343.76	2,468.3	444.9	-129.6	-12.6	0.00	0.00	0.00
2,560.0	13.51	343.76	2,507.2	453.9	-132.2	-12.8	0.00	0.00	0.00
2,600.0	13.51	343.76	2,546.1	462.8	-134.8	-13.1	0.00	0.00	0.00
2,640.0	13.51	343.76	2,585.0	471.8	-137.4	-13.3	0.00	0.00	0.00
2,680.0	13.51	343.76	2,623.8	480.8	-140.0	-13.6	0.00	0.00	0.00
2,720.0	13.51	343.76	2,662.7	489.8	-142.6	-13.8	0.00	0.00	0.00
2,760.0	13.51	343.76	2,701.6	498.7	-145.2	-14.1	0.00	0.00	0.00
2,800.0	13.51	343.76	2,740.5	507.7	-147.9	-14.4	0.00	0.00	0.00
2,840.0	13.51	343.76	2,779.4	516.7	-150.5	-14.6	0.00	0.00	0.00
2,880.0	13.51	343.76	2,818.3	525.6	-153.1	-14.9	0.00	0.00	0.00
2,920.0	13.51	343.76	2,857.2	534.6	-155.7	-15.1	0.00	0.00	0.00
2,960.0	13.51	343.76	2,896.1	543.6	-158.3	-15.4	0.00	0.00	0.00
3,000.0	13.51	343.76	2,935.0	552.5	-160.9	-15.6	0.00	0.00	0.00
3,040.0	13.51	343.76	2,973.9	561.5	-163.5	-15.9	0.00	0.00	0.00
3,080.0	13.51	343.76	3,012.8	570.5	-166.1	-16.1	0.00	0.00	0.00
3,120.0	13.51	343.76	3,051.7	579.5	-168.8	-16.4	0.00	0.00	0.00
3,160.0	13.51	343.76	3,090.6	588.4	-171.4	-16.6	0.00	0.00	0.00
3,200.0	13.51	343.76	3,129.5	597.4	-174.0	-16.9	0.00	0.00	0.00
3,240.0	13.51	343.76	3,168.4	606.4	-176.6	-17.1	0.00	0.00	0.00
3,280.0	13.51	343.76	3,207.2	615.3	-179.2	-17.4	0.00	0.00	0.00
3,320.0	13.51	343.76	3,246.1	624.3	-181.8	-17.6	0.00	0.00	0.00
3,360.0	13.51	343.76	3,285.0	633.3	-184.4	-17.9	0.00	0.00	0.00
3,400.0	13.51	343.76	3,323.9	642.2	-187.0	-18.2	0.00	0.00	0.00
3,440.0	13.51	343.76	3,362.8	651.2	-189.7	-18.4	0.00	0.00	0.00
3,480.0	13.51	343.76	3,401.7	660.2	-192.3	-18.7	0.00	0.00	0.00
3,520.0	13.51	343.76	3,440.6	669.2	-194.9	-18.9	0.00	0.00	0.00
3,560.0	13.51	343.76	3,479.5	678.1	-197.5	-19.2	0.00	0.00	0.00
3,600.0	13.51	343.76	3,518.4	687.1	-200.1	-19.4	0.00	0.00	0.00
3,640.0	13.51	343.76	3,557.3	696.1	-202.7	-19.7	0.00	0.00	0.00
3,680.0	13.51	343.76	3,596.2	705.0	-205.3	-19.9	0.00	0.00	0.00
3,720.0	13.51	343.76	3,635.1	714.0	-207.9	-20.2	0.00	0.00	0.00
3,760.0	13.51	343.76	3,674.0	723.0	-210.6	-20.4	0.00	0.00	0.00
3,800.0	13.51	343.76	3,712.9	731.9	-213.2	-20.7	0.00	0.00	0.00
3,840.0	13.51	343.76	3,751.8	740.9	-215.8	-20.9	0.00	0.00	0.00
3,880.0	13.51	343.76	3,790.7	749.9	-218.4	-21.2	0.00	0.00	0.00
3,920.0	13.51	343.76	3,829.5	758.9	-221.0	-21.5	0.00	0.00	0.00
3,960.0	13.51	343.76	3,868.4	767.8	-223.6	-21.7	0.00	0.00	0.00
4,000.0	13.51	343.76	3,907.3	776.8	-226.2	-22.0	0.00	0.00	0.00
4,040.0	13.51	343.76	3,946.2	785.8	-228.8	-22.2	0.00	0.00	0.00
4,080.0	13.51	343.76	3,985.1	794.7	-231.5	-22.5	0.00	0.00	0.00

Database:	Landmark	Local Co-ordinate Reference:	Well SRC Union 11HZC
Company:	Synergy Resources	TVD Reference:	WELL @ 4976.0ft (RKB - 13')
Project:	SEC.5-T2N-R68W	MD Reference:	WELL @ 4976.0ft (RKB - 13')
Site:	SRC Union Pad Sec.5-T2N-R68W	North Reference:	True
Well:	SRC Union 11HZC	Survey Calculation Method:	Minimum Curvature
Wellbore:	Wellbore #1		
Design:	Plan #2 (4-08-13)		

Planned Survey									
Measured Depth (ft)	Inclination (°)	Azimuth (°)	Vertical Depth (ft)	+N/-S (ft)	+E/-W (ft)	Vertical Section (ft)	Dogleg Rate (°/100ft)	Build Rate (°/100ft)	Turn Rate (°/100ft)
4,120.0	13.51	343.76	4,024.0	803.7	-234.1	-22.7	0.00	0.00	0.00
4,160.0	13.51	343.76	4,062.9	812.7	-236.7	-23.0	0.00	0.00	0.00
4,177.6	13.51	343.76	4,080.0	816.6	-237.8	-23.1	0.00	0.00	0.00
SUSSEX									
4,200.0	13.51	343.76	4,101.8	821.7	-239.3	-23.2	0.00	0.00	0.00
4,240.0	13.51	343.76	4,140.7	830.6	-241.9	-23.5	0.00	0.00	0.00
4,280.0	13.51	343.76	4,179.6	839.6	-244.5	-23.7	0.00	0.00	0.00
4,320.0	13.51	343.76	4,218.5	848.6	-247.1	-24.0	0.00	0.00	0.00
4,360.0	13.51	343.76	4,257.4	857.5	-249.7	-24.2	0.00	0.00	0.00
4,400.0	13.51	343.76	4,296.3	866.5	-252.4	-24.5	0.00	0.00	0.00
4,440.0	13.51	343.76	4,335.2	875.5	-255.0	-24.8	0.00	0.00	0.00
4,480.0	13.51	343.76	4,374.1	884.4	-257.6	-25.0	0.00	0.00	0.00
4,520.0	13.51	343.76	4,412.9	893.4	-260.2	-25.3	0.00	0.00	0.00
4,560.0	13.51	343.76	4,451.8	902.4	-262.8	-25.5	0.00	0.00	0.00
4,600.0	13.51	343.76	4,490.7	911.4	-265.4	-25.8	0.00	0.00	0.00
4,609.5	13.51	343.76	4,500.0	913.5	-266.0	-25.8	0.00	0.00	0.00
SHANNON									
4,640.0	13.51	343.76	4,529.6	920.3	-268.0	-26.0	0.00	0.00	0.00
4,680.0	13.51	343.76	4,568.5	929.3	-270.6	-26.3	0.00	0.00	0.00
4,720.0	13.51	343.76	4,607.4	938.3	-273.3	-26.5	0.00	0.00	0.00
4,760.0	13.51	343.76	4,646.3	947.2	-275.9	-26.8	0.00	0.00	0.00
4,800.0	13.51	343.76	4,685.2	956.2	-278.5	-27.0	0.00	0.00	0.00
4,840.0	13.51	343.76	4,724.1	965.2	-281.1	-27.3	0.00	0.00	0.00
4,880.0	13.51	343.76	4,763.0	974.1	-283.7	-27.5	0.00	0.00	0.00
4,920.0	13.51	343.76	4,801.9	983.1	-286.3	-27.8	0.00	0.00	0.00
4,960.0	13.51	343.76	4,840.8	992.1	-288.9	-28.0	0.00	0.00	0.00
5,000.0	13.51	343.76	4,879.7	1,001.1	-291.5	-28.3	0.00	0.00	0.00
5,040.0	13.51	343.76	4,918.6	1,010.0	-294.1	-28.6	0.00	0.00	0.00
5,080.0	13.51	343.76	4,957.5	1,019.0	-296.8	-28.8	0.00	0.00	0.00
5,120.0	13.51	343.76	4,996.4	1,028.0	-299.4	-29.1	0.00	0.00	0.00
5,160.0	13.51	343.76	5,035.2	1,036.9	-302.0	-29.3	0.00	0.00	0.00
5,200.0	13.51	343.76	5,074.1	1,045.9	-304.6	-29.6	0.00	0.00	0.00
5,240.0	13.51	343.76	5,113.0	1,054.9	-307.2	-29.8	0.00	0.00	0.00
5,280.0	13.51	343.76	5,151.9	1,063.8	-309.8	-30.1	0.00	0.00	0.00
5,320.0	13.51	343.76	5,190.8	1,072.8	-312.4	-30.3	0.00	0.00	0.00
5,360.0	13.51	343.76	5,229.7	1,081.8	-315.0	-30.6	0.00	0.00	0.00
5,400.0	13.51	343.76	5,268.6	1,090.8	-317.7	-30.8	0.00	0.00	0.00
5,440.0	13.51	343.76	5,307.5	1,099.7	-320.3	-31.1	0.00	0.00	0.00
5,464.0	13.51	343.76	5,330.9	1,105.1	-321.8	-31.2	0.00	0.00	0.00
5,480.0	13.19	343.76	5,346.4	1,108.7	-322.9	-31.3	2.00	-2.00	0.00
5,520.0	12.39	343.76	5,385.4	1,117.2	-325.3	-31.6	2.00	-2.00	0.00
5,560.0	11.59	343.76	5,424.5	1,125.1	-327.7	-31.8	2.00	-2.00	0.00
5,600.0	10.79	343.76	5,463.8	1,132.6	-329.8	-32.0	2.00	-2.00	0.00
5,640.0	9.99	343.76	5,503.1	1,139.5	-331.9	-32.2	2.00	-2.00	0.00
5,680.0	9.19	343.76	5,542.6	1,145.9	-333.7	-32.4	2.00	-2.00	0.00
5,720.0	8.39	343.76	5,582.1	1,151.8	-335.4	-32.6	2.00	-2.00	0.00
5,760.0	7.59	343.76	5,621.7	1,157.1	-337.0	-32.7	2.00	-2.00	0.00
5,800.0	6.79	343.76	5,661.4	1,161.9	-338.4	-32.8	2.00	-2.00	0.00
5,840.0	5.99	343.76	5,701.1	1,166.2	-339.6	-33.0	2.00	-2.00	0.00
5,880.0	5.19	343.76	5,741.0	1,169.9	-340.7	-33.1	2.00	-2.00	0.00
5,920.0	4.39	343.76	5,780.8	1,173.1	-341.7	-33.2	2.00	-2.00	0.00
5,960.0	3.59	343.76	5,820.7	1,175.8	-342.4	-33.2	2.00	-2.00	0.00
6,000.0	2.79	343.76	5,860.7	1,177.9	-343.1	-33.3	2.00	-2.00	0.00

Database:	Landmark	Local Co-ordinate Reference:	Well SRC Union 11HZC
Company:	Synergy Resources	TVD Reference:	WELL @ 4976.0ft (RKB - 13')
Project:	SEC.5-T2N-R68W	MD Reference:	WELL @ 4976.0ft (RKB - 13')
Site:	SRC Union Pad Sec.5-T2N-R68W	North Reference:	True
Well:	SRC Union 11HZC	Survey Calculation Method:	Minimum Curvature
Wellbore:	Wellbore #1		
Design:	Plan #2 (4-08-13)		

Planned Survey									
Measured Depth (ft)	Inclination (°)	Azimuth (°)	Vertical Depth (ft)	+N/-S (ft)	+E/-W (ft)	Vertical Section (ft)	Dogleg Rate (°/100ft)	Build Rate (°/100ft)	Turn Rate (°/100ft)
6,040.0	1.99	343.76	5,900.6	1,179.5	-343.5	-33.3	2.00	-2.00	0.00
6,080.0	1.19	343.76	5,940.6	1,180.6	-343.8	-33.4	2.00	-2.00	0.00
6,120.0	0.39	343.76	5,980.6	1,181.1	-344.0	-33.4	2.00	-2.00	0.00
6,139.4	0.00	0.00	6,000.0	1,181.2	-344.0	-33.4	2.00	-2.00	0.00
6,160.0	0.00	0.00	6,020.6	1,181.2	-344.0	-33.4	0.00	0.00	0.00
6,200.0	0.00	0.00	6,060.6	1,181.2	-344.0	-33.4	0.00	0.00	0.00
6,240.0	0.00	0.00	6,100.6	1,181.2	-344.0	-33.4	0.00	0.00	0.00
6,280.0	0.00	0.00	6,140.6	1,181.2	-344.0	-33.4	0.00	0.00	0.00
6,320.0	0.00	0.00	6,180.6	1,181.2	-344.0	-33.4	0.00	0.00	0.00
6,360.0	0.00	0.00	6,220.6	1,181.2	-344.0	-33.4	0.00	0.00	0.00
6,400.0	0.00	0.00	6,260.6	1,181.2	-344.0	-33.4	0.00	0.00	0.00
6,440.0	0.00	0.00	6,300.6	1,181.2	-344.0	-33.4	0.00	0.00	0.00
6,480.0	0.00	0.00	6,340.6	1,181.2	-344.0	-33.4	0.00	0.00	0.00
6,520.0	0.00	0.00	6,380.6	1,181.2	-344.0	-33.4	0.00	0.00	0.00
6,560.0	0.00	0.00	6,420.6	1,181.2	-344.0	-33.4	0.00	0.00	0.00
6,600.0	0.00	0.00	6,460.6	1,181.2	-344.0	-33.4	0.00	0.00	0.00
6,640.0	0.00	0.00	6,500.6	1,181.2	-344.0	-33.4	0.00	0.00	0.00
6,680.0	0.00	0.00	6,540.6	1,181.2	-344.0	-33.4	0.00	0.00	0.00
6,720.0	0.00	0.00	6,580.6	1,181.2	-344.0	-33.4	0.00	0.00	0.00
6,760.0	0.00	0.00	6,620.6	1,181.2	-344.0	-33.4	0.00	0.00	0.00
6,800.0	0.00	0.00	6,660.6	1,181.2	-344.0	-33.4	0.00	0.00	0.00
6,840.0	0.00	0.00	6,700.6	1,181.2	-344.0	-33.4	0.00	0.00	0.00
6,880.0	0.00	0.00	6,740.6	1,181.2	-344.0	-33.4	0.00	0.00	0.00
6,920.0	0.00	0.00	6,780.6	1,181.2	-344.0	-33.4	0.00	0.00	0.00
6,930.4	0.00	0.00	6,791.0	1,181.2	-344.0	-33.4	0.00	0.00	0.00
KOP #2									
6,960.0	3.26	89.93	6,820.6	1,181.2	-343.2	-32.6	11.02	11.02	0.00
7,000.0	7.67	89.93	6,860.4	1,181.2	-339.3	-28.9	11.02	11.02	0.00
7,040.0	12.08	89.93	6,899.8	1,181.2	-332.5	-22.3	11.02	11.02	0.00
7,080.0	16.48	89.93	6,938.5	1,181.2	-322.6	-12.7	11.02	11.02	0.00
7,120.0	20.89	89.93	6,976.4	1,181.2	-309.8	-0.3	11.02	11.02	0.00
7,145.5	23.70	89.93	7,000.0	1,181.3	-300.2	9.0	11.02	11.02	0.00
NIOBRARA									
7,160.0	25.30	89.93	7,013.2	1,181.3	-294.1	14.9	11.02	11.02	0.00
7,200.0	29.71	89.93	7,048.7	1,181.3	-275.7	32.7	11.02	11.02	0.00
7,240.0	34.11	89.93	7,082.6	1,181.3	-254.5	53.2	11.02	11.02	0.00
7,280.0	38.52	89.93	7,114.8	1,181.3	-230.8	76.1	11.02	11.02	0.00
7,320.0	42.93	89.93	7,145.2	1,181.4	-204.8	101.3	11.02	11.02	0.00
7,360.0	47.33	89.93	7,173.4	1,181.4	-176.4	128.8	11.02	11.02	0.00
7,400.0	51.74	89.93	7,199.3	1,181.4	-146.0	158.2	11.02	11.02	0.00
7,440.0	56.15	89.93	7,222.9	1,181.5	-113.7	189.5	11.02	11.02	0.00
7,480.0	60.56	89.93	7,243.8	1,181.5	-79.6	222.4	11.02	11.02	0.00
7,520.0	64.96	89.93	7,262.1	1,181.5	-44.1	256.8	11.02	11.02	0.00
7,560.0	69.37	89.93	7,277.7	1,181.6	-7.2	292.5	11.02	11.02	0.00
7,600.0	73.78	89.93	7,290.3	1,181.6	30.7	329.2	11.02	11.02	0.00
7,640.0	78.19	89.93	7,300.0	1,181.7	69.5	366.8	11.02	11.02	0.00
7,680.0	82.59	89.93	7,306.7	1,181.7	109.0	404.9	11.02	11.02	0.00
7,720.0	87.00	89.93	7,310.3	1,181.8	148.8	443.5	11.02	11.02	0.00
7,747.0	89.98	89.93	7,311.0	1,181.8	175.8	469.6	11.02	11.02	0.00
7"									
7,747.2	90.00	89.93	7,310.0	1,181.8	175.0	468.8	11.02	11.02	0.00
7,748.2	90.00	89.93	7,310.0	1,181.8	176.0	469.8	0.00	0.00	0.00
Landing pt 528'FNL & 510'FWL									
7,752.1	90.00	89.89	7,310.0	1,181.8	179.9	473.6	1.00	0.00	-1.00

Database:	Landmark	Local Co-ordinate Reference:	Well SRC Union 11HZC
Company:	Synergy Resources	TVD Reference:	WELL @ 4976.0ft (RKB - 13')
Project:	SEC.5-T2N-R68W	MD Reference:	WELL @ 4976.0ft (RKB - 13')
Site:	SRC Union Pad Sec.5-T2N-R68W	North Reference:	True
Well:	SRC Union 11HZC	Survey Calculation Method:	Minimum Curvature
Wellbore:	Wellbore #1		
Design:	Plan #2 (4-08-13)		

Planned Survey									
Measured Depth (ft)	Inclination (°)	Azimuth (°)	Vertical Depth (ft)	+N/-S (ft)	+E/-W (ft)	Vertical Section (ft)	Dogleg Rate (°/100ft)	Build Rate (°/100ft)	Turn Rate (°/100ft)
7,760.0	90.00	89.89	7,310.0	1,181.8	187.8	481.2	0.00	0.00	0.00
7,778.2	90.00	89.89	7,310.0	1,181.9	206.0	498.8	0.00	0.00	0.00
T1 - SRC Union 11HZC									
7,800.0	90.00	89.89	7,310.0	1,181.9	227.8	519.9	0.00	0.00	0.00
7,840.0	90.00	89.89	7,310.0	1,182.0	267.8	558.6	0.00	0.00	0.00
7,880.0	90.00	89.89	7,310.0	1,182.0	307.8	597.3	0.00	0.00	0.00
7,920.0	90.00	89.89	7,310.0	1,182.1	347.8	636.0	0.00	0.00	0.00
7,960.0	90.00	89.89	7,310.0	1,182.2	387.8	674.7	0.00	0.00	0.00
8,000.0	90.00	89.89	7,310.0	1,182.3	427.8	713.5	0.00	0.00	0.00
8,040.0	90.00	89.89	7,310.0	1,182.3	467.8	752.2	0.00	0.00	0.00
8,080.0	90.00	89.89	7,310.0	1,182.4	507.8	790.9	0.00	0.00	0.00
8,120.0	90.00	89.89	7,310.0	1,182.5	547.8	829.6	0.00	0.00	0.00
8,160.0	90.00	89.89	7,310.0	1,182.6	587.8	868.3	0.00	0.00	0.00
8,200.0	90.00	89.89	7,310.0	1,182.6	627.8	907.0	0.00	0.00	0.00
8,240.0	90.00	89.89	7,310.0	1,182.7	667.8	945.7	0.00	0.00	0.00
8,280.0	90.00	89.89	7,310.0	1,182.8	707.8	984.4	0.00	0.00	0.00
8,320.0	90.00	89.89	7,310.0	1,182.9	747.8	1,023.2	0.00	0.00	0.00
8,360.0	90.00	89.89	7,310.0	1,182.9	787.8	1,061.9	0.00	0.00	0.00
8,400.0	90.00	89.89	7,310.0	1,183.0	827.8	1,100.6	0.00	0.00	0.00
8,440.0	90.00	89.89	7,310.0	1,183.1	867.8	1,139.3	0.00	0.00	0.00
8,480.0	90.00	89.89	7,310.0	1,183.2	907.8	1,178.0	0.00	0.00	0.00
8,520.0	90.00	89.89	7,310.0	1,183.2	947.8	1,216.7	0.00	0.00	0.00
8,560.0	90.00	89.89	7,310.0	1,183.3	987.8	1,255.4	0.00	0.00	0.00
8,600.0	90.00	89.89	7,310.0	1,183.4	1,027.8	1,294.1	0.00	0.00	0.00
8,640.0	90.00	89.89	7,310.0	1,183.4	1,067.8	1,332.9	0.00	0.00	0.00
8,680.0	90.00	89.89	7,310.0	1,183.5	1,107.8	1,371.6	0.00	0.00	0.00
8,720.0	90.00	89.89	7,310.0	1,183.6	1,147.8	1,410.3	0.00	0.00	0.00
8,760.0	90.00	89.89	7,310.0	1,183.7	1,187.8	1,449.0	0.00	0.00	0.00
8,800.0	90.00	89.89	7,310.0	1,183.7	1,227.8	1,487.7	0.00	0.00	0.00
8,840.0	90.00	89.89	7,310.0	1,183.8	1,267.8	1,526.4	0.00	0.00	0.00
8,880.0	90.00	89.89	7,310.0	1,183.9	1,307.8	1,565.1	0.00	0.00	0.00
8,920.0	90.00	89.89	7,310.0	1,184.0	1,347.8	1,603.8	0.00	0.00	0.00
8,960.0	90.00	89.89	7,310.0	1,184.0	1,387.8	1,642.6	0.00	0.00	0.00
9,000.0	90.00	89.89	7,310.0	1,184.1	1,427.8	1,681.3	0.00	0.00	0.00
9,040.0	90.00	89.89	7,310.0	1,184.2	1,467.8	1,720.0	0.00	0.00	0.00
9,080.0	90.00	89.89	7,310.0	1,184.3	1,507.8	1,758.7	0.00	0.00	0.00
9,120.0	90.00	89.89	7,310.0	1,184.3	1,547.8	1,797.4	0.00	0.00	0.00
9,160.0	90.00	89.89	7,310.0	1,184.4	1,587.8	1,836.1	0.00	0.00	0.00
9,200.0	90.00	89.89	7,310.0	1,184.5	1,627.8	1,874.8	0.00	0.00	0.00
9,240.0	90.00	89.89	7,310.0	1,184.6	1,667.8	1,913.5	0.00	0.00	0.00
9,280.0	90.00	89.89	7,310.0	1,184.6	1,707.8	1,952.3	0.00	0.00	0.00
9,320.0	90.00	89.89	7,310.0	1,184.7	1,747.8	1,991.0	0.00	0.00	0.00
9,360.0	90.00	89.89	7,310.0	1,184.8	1,787.8	2,029.7	0.00	0.00	0.00
9,400.0	90.00	89.89	7,310.0	1,184.9	1,827.8	2,068.4	0.00	0.00	0.00
9,440.0	90.00	89.89	7,310.0	1,184.9	1,867.8	2,107.1	0.00	0.00	0.00
9,480.0	90.00	89.89	7,310.0	1,185.0	1,907.8	2,145.8	0.00	0.00	0.00
9,520.0	90.00	89.89	7,310.0	1,185.1	1,947.8	2,184.5	0.00	0.00	0.00
9,560.0	90.00	89.89	7,310.0	1,185.1	1,987.8	2,223.3	0.00	0.00	0.00
9,600.0	90.00	89.89	7,310.0	1,185.2	2,027.8	2,262.0	0.00	0.00	0.00
9,640.0	90.00	89.89	7,310.0	1,185.3	2,067.8	2,300.7	0.00	0.00	0.00
9,680.0	90.00	89.89	7,310.0	1,185.4	2,107.8	2,339.4	0.00	0.00	0.00
9,720.0	90.00	89.89	7,310.0	1,185.4	2,147.8	2,378.1	0.00	0.00	0.00
9,760.0	90.00	89.89	7,310.0	1,185.5	2,187.8	2,416.8	0.00	0.00	0.00

Database:	Landmark	Local Co-ordinate Reference:	Well SRC Union 11HZC
Company:	Synergy Resources	TVD Reference:	WELL @ 4976.0ft (RKB - 13')
Project:	SEC.5-T2N-R68W	MD Reference:	WELL @ 4976.0ft (RKB - 13')
Site:	SRC Union Pad Sec.5-T2N-R68W	North Reference:	True
Well:	SRC Union 11HZC	Survey Calculation Method:	Minimum Curvature
Wellbore:	Wellbore #1		
Design:	Plan #2 (4-08-13)		

Planned Survey									
Measured Depth (ft)	Inclination (°)	Azimuth (°)	Vertical Depth (ft)	+N/-S (ft)	+E/-W (ft)	Vertical Section (ft)	Dogleg Rate (°/100ft)	Build Rate (°/100ft)	Turn Rate (°/100ft)
9,800.0	90.00	89.89	7,310.0	1,185.6	2,227.8	2,455.5	0.00	0.00	0.00
9,840.0	90.00	89.89	7,310.0	1,185.7	2,267.8	2,494.2	0.00	0.00	0.00
9,880.0	90.00	89.89	7,310.0	1,185.7	2,307.8	2,533.0	0.00	0.00	0.00
9,920.0	90.00	89.89	7,310.0	1,185.8	2,347.8	2,571.7	0.00	0.00	0.00
9,960.0	90.00	89.89	7,310.0	1,185.9	2,387.8	2,610.4	0.00	0.00	0.00
10,000.0	90.00	89.89	7,310.0	1,186.0	2,427.8	2,649.1	0.00	0.00	0.00
10,040.0	90.00	89.89	7,310.0	1,186.0	2,467.8	2,687.8	0.00	0.00	0.00
10,080.0	90.00	89.89	7,310.0	1,186.1	2,507.8	2,726.5	0.00	0.00	0.00
10,120.0	90.00	89.89	7,310.0	1,186.2	2,547.8	2,765.2	0.00	0.00	0.00
10,160.0	90.00	89.89	7,310.0	1,186.3	2,587.8	2,803.9	0.00	0.00	0.00
10,200.0	90.00	89.89	7,310.0	1,186.3	2,627.8	2,842.7	0.00	0.00	0.00
10,240.0	90.00	89.89	7,310.0	1,186.4	2,667.8	2,881.4	0.00	0.00	0.00
10,280.0	90.00	89.89	7,310.0	1,186.5	2,707.8	2,920.1	0.00	0.00	0.00
10,320.0	90.00	89.89	7,310.0	1,186.6	2,747.8	2,958.8	0.00	0.00	0.00
10,360.0	90.00	89.89	7,310.0	1,186.6	2,787.8	2,997.5	0.00	0.00	0.00
10,400.0	90.00	89.89	7,310.0	1,186.7	2,827.8	3,036.2	0.00	0.00	0.00
10,440.0	90.00	89.89	7,310.0	1,186.8	2,867.8	3,074.9	0.00	0.00	0.00
10,480.0	90.00	89.89	7,310.0	1,186.8	2,907.8	3,113.6	0.00	0.00	0.00
10,520.0	90.00	89.89	7,310.0	1,186.9	2,947.8	3,152.4	0.00	0.00	0.00
10,560.0	90.00	89.89	7,310.0	1,187.0	2,987.8	3,191.1	0.00	0.00	0.00
10,600.0	90.00	89.89	7,310.0	1,187.1	3,027.8	3,229.8	0.00	0.00	0.00
10,640.0	90.00	89.89	7,310.0	1,187.1	3,067.8	3,268.5	0.00	0.00	0.00
10,680.0	90.00	89.89	7,310.0	1,187.2	3,107.8	3,307.2	0.00	0.00	0.00
10,720.0	90.00	89.89	7,310.0	1,187.3	3,147.8	3,345.9	0.00	0.00	0.00
10,760.0	90.00	89.89	7,310.0	1,187.4	3,187.8	3,384.6	0.00	0.00	0.00
10,800.0	90.00	89.89	7,310.0	1,187.4	3,227.8	3,423.3	0.00	0.00	0.00
10,840.0	90.00	89.89	7,310.0	1,187.5	3,267.8	3,462.1	0.00	0.00	0.00
10,880.0	90.00	89.89	7,310.0	1,187.6	3,307.8	3,500.8	0.00	0.00	0.00
10,920.0	90.00	89.89	7,310.0	1,187.7	3,347.8	3,539.5	0.00	0.00	0.00
10,960.0	90.00	89.89	7,310.0	1,187.7	3,387.8	3,578.2	0.00	0.00	0.00
11,000.0	90.00	89.89	7,310.0	1,187.8	3,427.8	3,616.9	0.00	0.00	0.00
11,040.0	90.00	89.89	7,310.0	1,187.9	3,467.8	3,655.6	0.00	0.00	0.00
11,080.0	90.00	89.89	7,310.0	1,188.0	3,507.8	3,694.3	0.00	0.00	0.00
11,120.0	90.00	89.89	7,310.0	1,188.0	3,547.8	3,733.0	0.00	0.00	0.00
11,160.0	90.00	89.89	7,310.0	1,188.1	3,587.8	3,771.8	0.00	0.00	0.00
11,200.0	90.00	89.89	7,310.0	1,188.2	3,627.8	3,810.5	0.00	0.00	0.00
11,240.0	90.00	89.89	7,310.0	1,188.3	3,667.8	3,849.2	0.00	0.00	0.00
11,280.0	90.00	89.89	7,310.0	1,188.3	3,707.8	3,887.9	0.00	0.00	0.00
11,320.0	90.00	89.89	7,310.0	1,188.4	3,747.8	3,926.6	0.00	0.00	0.00
11,360.0	90.00	89.89	7,310.0	1,188.5	3,787.8	3,965.3	0.00	0.00	0.00
11,400.0	90.00	89.89	7,310.0	1,188.5	3,827.8	4,004.0	0.00	0.00	0.00
11,440.0	90.00	89.89	7,310.0	1,188.6	3,867.8	4,042.7	0.00	0.00	0.00
11,480.0	90.00	89.89	7,310.0	1,188.7	3,907.8	4,081.5	0.00	0.00	0.00
11,520.0	90.00	89.89	7,310.0	1,188.8	3,947.8	4,120.2	0.00	0.00	0.00
11,560.0	90.00	89.89	7,310.0	1,188.8	3,987.8	4,158.9	0.00	0.00	0.00
11,600.0	90.00	89.89	7,310.0	1,188.9	4,027.8	4,197.6	0.00	0.00	0.00
11,640.0	90.00	89.89	7,310.0	1,189.0	4,067.8	4,236.3	0.00	0.00	0.00
11,680.0	90.00	89.89	7,310.0	1,189.1	4,107.8	4,275.0	0.00	0.00	0.00
11,720.0	90.00	89.89	7,310.0	1,189.1	4,147.8	4,313.7	0.00	0.00	0.00
11,760.0	90.00	89.89	7,310.0	1,189.2	4,187.8	4,352.4	0.00	0.00	0.00
11,800.0	90.00	89.89	7,310.0	1,189.3	4,227.8	4,391.2	0.00	0.00	0.00
11,840.0	90.00	89.89	7,310.0	1,189.4	4,267.8	4,429.9	0.00	0.00	0.00
11,880.0	90.00	89.89	7,310.0	1,189.4	4,307.8	4,468.6	0.00	0.00	0.00
11,920.0	90.00	89.89	7,310.0	1,189.5	4,347.8	4,507.3	0.00	0.00	0.00

Plan Annotations					
	Measured Depth (ft)	Vertical Depth (ft)	Local Coordinates		Comment
			+N/-S (ft)	+E/-W (ft)	
	200.0	200.0	0.0	0.0	KOP #1
	6,930.4	6,791.0	1,181.2	-344.0	KOP #2



Directional

Synergy Resources

SEC.5-T2N-R68W

SRC Union Pad Sec.5-T2N-R68W

SRC Union 11HZC

Wellbore #1

Plan #2 (4-08-13)

Anticollision Report

08 April, 2013

Company:	Synergy Resources	Local Co-ordinate Reference:	Well SRC Union 11HZC
Project:	SEC.5-T2N-R68W	TVD Reference:	WELL @ 4976.0ft (RKB - 13')
Reference Site:	SRC Union Pad Sec.5-T2N-R68W	MD Reference:	WELL @ 4976.0ft (RKB - 13')
Site Error:	0.0ft	North Reference:	True
Reference Well:	SRC Union 11HZC	Survey Calculation Method:	Minimum Curvature
Well Error:	0.0ft	Output errors are at	2.00 sigma
Reference Wellbore	Wellbore #1	Database:	Landmark
Reference Design:	Plan #2 (4-08-13)	Offset TVD Reference:	Offset Datum

Reference	Plan #2 (4-08-13)		
Filter type:	NO GLOBAL FILTER: Using user defined selection & filtering criteria		
Interpolation Method:	MD Interval 100.0ft	Error Model:	ISCWSA
Depth Range:	Unlimited	Scan Method:	Closest Approach 3D
Results Limited by:	Maximum center-center distance of 1,000.0ft	Error Surface:	Elliptical Conic
Warning Levels Evaluated at:	2.00 Sigma		

Survey Tool Program	Date 4/8/2013			
From (ft)	To (ft)	Survey (Wellbore)	Tool Name	Description
0.0	12,113.6	Plan #2 (4-08-13) (Wellbore #1)	MWD	MWD - Standard

Summary						
Site Name	Reference Measured Depth (ft)	Offset Measured Depth (ft)	Distance Between Centres (ft)	Distance Between Ellipses (ft)	Separation Factor	Warning
Offset Well - Wellbore - Design						
SRC Union Pad Sec.5-T2N-R68W						
SRC Union 11-5D - Wellbore #1 - Plan #1 (1-03-13)	369.5	370.4	59.7	58.2	41.382	CC
SRC Union 11-5D - Wellbore #1 - Plan #1 (1-03-13)	400.0	400.8	59.7	58.1	37.767	ES
SRC Union 11-5D - Wellbore #1 - Plan #1 (1-03-13)	8,036.4	7,428.6	222.8	177.3	4.906	SF
SRC Union 11HZN - Wellbore #1 - Plan #2 (4-08-13)	290.1	290.1	19.9	18.8	18.460	CC
SRC Union 11HZN - Wellbore #1 - Plan #2 (4-08-13)	300.0	300.0	19.9	18.8	17.732	ES
SRC Union 11HZN - Wellbore #1 - Plan #2 (4-08-13)	6,700.0	6,672.8	125.5	74.7	2.468	SF
SRC Union 12-5D - Wellbore #1 - Plan #1 (1-03-13)	518.7	521.2	138.5	136.4	66.240	CC, ES
SRC Union 12-5D - Wellbore #1 - Plan #1 (1-03-13)	1,000.0	986.6	181.0	176.4	38.781	SF
SRC Union 12HZC - Wellbore #1 - Plan #2 (4-08-13)	336.5	337.5	39.7	38.4	30.700	CC
SRC Union 12HZC - Wellbore #1 - Plan #2 (4-08-13)	400.0	400.8	39.8	38.3	25.198	ES
SRC Union 12HZC - Wellbore #1 - Plan #2 (4-08-13)	600.0	599.7	46.7	44.1	18.341	SF
SRC Union 12HZN - Wellbore #1 - Plan #2 (4-08-13)	416.6	418.4	99.6	97.9	59.929	CC
SRC Union 12HZN - Wellbore #1 - Plan #2 (4-08-13)	500.0	501.5	99.9	97.8	48.548	ES
SRC Union 12HZN - Wellbore #1 - Plan #2 (4-08-13)	1,000.0	992.3	141.3	136.5	29.970	SF
SRC Union 5AHZC - Wellbore #1 - Plan #2 (4-08-13)	438.7	440.5	119.6	117.9	67.697	CC
SRC Union 5AHZC - Wellbore #1 - Plan #2 (4-08-13)	500.0	501.5	119.8	117.7	58.201	ES
SRC Union 5AHZC - Wellbore #1 - Plan #2 (4-08-13)	12,113.6	12,042.5	475.9	210.4	1.793	SF
SRC Union 5AHZN - Wellbore #1 - Plan #2 (4-08-13)	478.6	480.2	159.4	157.4	81.475	CC
SRC Union 5AHZN - Wellbore #1 - Plan #2 (4-08-13)	500.0	501.5	159.4	157.3	77.458	ES
SRC Union 5AHZN - Wellbore #1 - Plan #2 (4-08-13)	5,400.0	5,346.5	984.3	955.8	34.601	SF
SRC Union 5FD - Wellbore #1 - Plan #1 (1-03-13)	200.0	200.0	20.1	19.4	29.795	CC
SRC Union 5FD - Wellbore #1 - Plan #1 (1-03-13)	300.0	300.0	20.3	19.2	18.082	ES
SRC Union 5FD - Wellbore #1 - Plan #1 (1-03-13)	500.0	499.5	26.6	24.5	12.912	SF
SRC Union 5JD - Wellbore #1 - Plan #1 (1-03-13)	166.3	167.3	79.8	79.3	152.034	CC
SRC Union 5JD - Wellbore #1 - Plan #1 (1-03-13)	200.0	201.0	79.8	79.2	118.030	ES
SRC Union 5JD - Wellbore #1 - Plan #1 (1-03-13)	8,700.0	7,470.8	471.7	404.4	7.011	SF

Offset Design	SRC Union Pad Sec.5-T2N-R68W - SRC Union 11-5D - Wellbore #1 - Plan #1 (1-03-13)											Offset Site Error:	0.0ft
Survey Program:	0-MWD											Offset Well Error:	0.0ft
Reference	Offset	Semi Major Axis		Distance									
Measured Depth (ft)	Vertical Depth (ft)	Measured Depth (ft)	Vertical Depth (ft)	Reference (ft)	Offset (ft)	Highside Toolface (°)	Offset Wellbore Centre +N/-S (ft)	+E/-W (ft)	Between Centres (ft)	Between Ellipses (ft)	Minimum Separation (ft)	Separation Factor	Warning
0.0	0.0	1.0	1.0	0.0	0.0	68.96	21.5	55.9	59.9	59.9	0.00	N/A	
100.0	100.0	101.0	101.0	0.1	0.1	68.96	21.5	55.9	59.9	59.7	0.23	263.795	

CC - Min centre to center distance or convergent point, SF - min separation factor, ES - min ellipse separation

Company:	Synergy Resources	Local Co-ordinate Reference:	Well SRC Union 11HZC
Project:	SEC.5-T2N-R68W	TVD Reference:	WELL @ 4976.0ft (RKB - 13')
Reference Site:	SRC Union Pad Sec.5-T2N-R68W	MD Reference:	WELL @ 4976.0ft (RKB - 13')
Site Error:	0.0ft	North Reference:	True
Reference Well:	SRC Union 11HZC	Survey Calculation Method:	Minimum Curvature
Well Error:	0.0ft	Output errors are at	2.00 sigma
Reference Wellbore	Wellbore #1	Database:	Landmark
Reference Design:	Plan #2 (4-08-13)	Offset TVD Reference:	Offset Datum

Offset Design													Offset Site Error:	0.0 ft
Survey Program: 0-MWD													Offset Well Error:	0.0 ft
Reference		Offset		Semi Major Axis			Distance							Warning
Measured Depth (ft)	Vertical Depth (ft)	Measured Depth (ft)	Vertical Depth (ft)	Reference (ft)	Offset (ft)	Highside Toolface (°)	Offset Wellbore Centre +N/-S (ft)	+E/-W (ft)	Between Centres (ft)	Between Ellipses (ft)	Minimum Separation (ft)	Separation Factor		
200.0	200.0	201.0	201.0	0.3	0.3	68.96	21.5	55.9	59.9	59.2	0.68	88.516		
300.0	300.0	301.0	301.0	0.6	0.6	86.87	21.5	55.9	59.8	58.6	1.13	53.096		
369.5	369.4	370.4	370.4	0.7	0.7	90.00	21.5	55.9	59.7	58.2	1.44	41.382 CC		
400.0	399.8	400.8	400.8	0.8	0.8	91.88	21.5	55.9	59.7	58.1	1.58	37.767 ES		
500.0	499.5	500.5	500.5	1.0	1.0	100.09	21.5	55.9	60.6	58.6	2.05	29.505		
600.0	598.7	599.7	599.7	1.3	1.2	110.78	21.5	55.9	63.9	61.4	2.55	25.034		
700.0	697.5	698.5	698.5	1.7	1.5	122.44	21.5	55.9	71.0	68.0	3.07	23.165		
800.0	795.6	796.6	796.6	2.0	1.7	133.35	21.5	55.9	82.9	79.4	3.58	23.193		
900.0	893.1	894.1	894.1	2.5	1.9	142.50	21.5	55.9	99.8	95.7	4.07	24.516		
1,000.0	990.3	992.3	992.3	2.9	2.1	148.84	22.5	56.3	119.0	114.4	4.55	26.136		
1,100.0	1,087.5	1,091.4	1,091.3	3.4	2.3	152.45	25.9	57.8	138.1	133.1	5.04	27.417		
1,200.0	1,184.8	1,191.1	1,190.8	3.8	2.6	154.31	31.7	60.3	156.6	151.0	5.54	28.258		
1,300.0	1,282.0	1,291.4	1,290.7	4.3	2.8	155.00	39.9	63.9	174.0	167.9	6.07	28.678		
1,400.0	1,379.2	1,392.2	1,390.8	4.8	3.0	154.84	50.5	68.5	190.3	183.7	6.63	28.725		
1,500.0	1,476.5	1,493.2	1,490.8	5.3	3.3	154.02	63.7	74.2	205.5	198.3	7.22	28.454		
1,600.0	1,573.7	1,593.0	1,589.3	5.8	3.6	152.81	78.6	80.7	219.9	212.1	7.86	27.982		
1,700.0	1,671.0	1,691.8	1,686.8	6.2	3.9	151.71	93.5	87.2	234.3	225.8	8.52	27.514		
1,800.0	1,768.2	1,790.7	1,784.3	6.7	4.2	150.74	108.5	93.7	248.8	239.6	9.19	27.076		
1,900.0	1,865.4	1,889.6	1,881.8	7.2	4.6	149.88	123.5	100.2	263.3	253.4	9.87	26.672		
2,000.0	1,962.7	1,988.4	1,979.3	7.7	4.9	149.10	138.5	106.7	277.9	267.3	10.57	26.299		
2,100.0	2,059.9	2,087.3	2,076.8	8.2	5.2	148.40	153.4	113.2	292.5	281.2	11.27	25.956		
2,200.0	2,157.1	2,186.2	2,174.3	8.7	5.6	147.77	168.4	119.7	307.2	295.2	11.98	25.641		
2,300.0	2,254.4	2,285.0	2,271.8	9.2	5.9	147.20	183.4	126.2	321.8	309.2	12.69	25.352		
2,400.0	2,351.6	2,383.9	2,369.3	9.6	6.3	146.68	198.3	132.7	336.6	323.2	13.42	25.087		
2,500.0	2,448.8	2,482.8	2,466.8	10.1	6.6	146.20	213.3	139.2	351.3	337.2	14.14	24.843		
2,600.0	2,546.1	2,581.6	2,564.4	10.6	7.0	145.75	228.3	145.7	366.1	351.2	14.87	24.618		
2,700.0	2,643.3	2,680.5	2,661.9	11.1	7.3	145.35	243.2	152.2	380.9	365.3	15.60	24.410		
2,800.0	2,740.5	2,779.4	2,759.4	11.6	7.7	144.97	258.2	158.7	395.7	379.3	16.34	24.218		
2,900.0	2,837.8	2,878.2	2,856.9	12.1	8.0	144.62	273.2	165.2	410.5	393.4	17.08	24.039		
3,000.0	2,935.0	2,977.1	2,954.4	12.6	8.4	144.30	288.1	171.7	425.3	407.5	17.82	23.874		
3,100.0	3,032.2	3,076.0	3,051.9	13.1	8.8	143.99	303.1	178.3	440.2	421.6	18.56	23.720		
3,200.0	3,129.5	3,174.8	3,149.4	13.5	9.1	143.71	318.1	184.8	455.0	435.7	19.30	23.576		
3,300.0	3,226.7	3,273.7	3,246.9	14.0	9.5	143.45	333.1	191.3	469.9	449.9	20.05	23.442		
3,400.0	3,323.9	3,372.6	3,344.4	14.5	9.8	143.20	348.0	197.8	484.8	464.0	20.79	23.316		
3,500.0	3,421.2	3,471.4	3,441.9	15.0	10.2	142.96	363.0	204.3	499.7	478.1	21.54	23.198		
3,600.0	3,518.4	3,570.3	3,539.4	15.5	10.6	142.74	378.0	210.8	514.6	492.3	22.29	23.087		
3,700.0	3,615.6	3,669.2	3,637.0	16.0	10.9	142.53	392.9	217.3	529.5	506.4	23.04	22.983		
3,800.0	3,712.9	3,768.0	3,734.5	16.5	11.3	142.34	407.9	223.8	544.4	520.6	23.79	22.884		
3,900.0	3,810.1	3,866.9	3,832.0	17.0	11.7	142.15	422.9	230.3	559.3	534.8	24.54	22.792		
4,000.0	3,907.3	3,965.8	3,929.5	17.5	12.0	141.97	437.8	236.8	574.2	548.9	25.29	22.704		
4,100.0	4,004.6	4,064.6	4,027.0	17.9	12.4	141.81	452.8	243.3	589.1	563.1	26.04	22.621		
4,200.0	4,101.8	4,163.5	4,124.5	18.4	12.8	141.65	467.8	249.8	604.1	577.3	26.80	22.542		
4,300.0	4,199.0	4,262.4	4,222.0	18.9	13.1	141.49	482.8	256.3	619.0	591.5	27.55	22.467		
4,400.0	4,296.3	4,361.2	4,319.5	19.4	13.5	141.35	497.7	262.8	633.9	605.6	28.31	22.396		
4,500.0	4,393.5	4,460.1	4,417.0	19.9	13.9	141.21	512.7	269.3	648.9	619.8	29.06	22.329		
4,600.0	4,490.7	4,559.0	4,514.5	20.4	14.2	141.08	527.7	275.8	663.8	634.0	29.82	22.264		
4,700.0	4,588.0	4,657.8	4,612.0	20.9	14.6	140.95	542.6	282.3	678.8	648.2	30.57	22.203		
4,800.0	4,685.2	4,756.7	4,709.6	21.4	15.0	140.83	557.6	288.8	693.7	662.4	31.33	22.144		
4,900.0	4,782.4	4,855.5	4,807.1	21.9	15.3	140.72	572.6	295.3	708.7	676.6	32.08	22.088		
5,000.0	4,879.7	4,954.4	4,904.6	22.3	15.7	140.61	587.5	301.8	723.6	690.8	32.84	22.035		
5,100.0	4,976.9	5,053.3	5,002.1	22.8	16.1	140.50	602.5	308.3	738.6	705.0	33.60	21.984		
5,200.0	5,074.1	5,152.1	5,099.6	23.3	16.4	140.40	617.5	314.8	753.6	719.2	34.36	21.934		

CC - Min centre to center distance or convergent point, SF - min separation factor, ES - min ellipse separation

Company:	Synergy Resources	Local Co-ordinate Reference:	Well SRC Union 11HZC
Project:	SEC.5-T2N-R68W	TVD Reference:	WELL @ 4976.0ft (RKB - 13')
Reference Site:	SRC Union Pad Sec.5-T2N-R68W	MD Reference:	WELL @ 4976.0ft (RKB - 13')
Site Error:	0.0ft	North Reference:	True
Reference Well:	SRC Union 11HZC	Survey Calculation Method:	Minimum Curvature
Well Error:	0.0ft	Output errors are at	2.00 sigma
Reference Wellbore	Wellbore #1	Database:	Landmark
Reference Design:	Plan #2 (4-08-13)	Offset TVD Reference:	Offset Datum

Offset Design												Offset Site Error:	0.0 ft
Survey Program: 0-MWD												Offset Well Error:	0.0 ft
Reference		Offset		Semi Major Axis			Distance						Warning
Measured Depth (ft)	Vertical Depth (ft)	Measured Depth (ft)	Vertical Depth (ft)	Reference (ft)	Offset (ft)	Highside Toolface (°)	Offset Wellbore Centre +N/-S (ft)	+E/-W (ft)	Between Centres (ft)	Between Ellipses (ft)	Minimum Separation (ft)	Separation Factor	
5,300.0	5,171.4	5,251.0	5,197.1	23.8	16.8	140.30	632.4	321.3	768.5	733.4	35.11	21.887	
5,400.0	5,268.6	5,349.9	5,294.6	24.3	17.2	140.21	647.4	327.8	783.5	747.6	35.87	21.842	
5,500.0	5,365.9	5,448.8	5,392.1	24.8	17.6	140.17	662.4	334.4	798.3	761.7	36.63	21.795	
5,600.0	5,463.8	5,547.9	5,489.9	25.1	17.9	140.11	677.4	340.9	811.0	773.6	37.34	21.717	
5,700.0	5,562.3	5,647.2	5,587.9	25.4	18.3	139.87	692.4	347.4	821.0	783.0	38.05	21.576	
5,800.0	5,661.4	5,746.7	5,686.0	25.7	18.7	139.44	707.5	354.0	828.5	789.7	38.76	21.376	
5,900.0	5,760.9	5,846.1	5,784.0	25.9	19.0	138.84	722.6	360.5	833.4	793.9	39.45	21.123	
6,000.0	5,860.7	5,945.3	5,881.9	26.1	19.4	138.05	737.6	367.0	835.8	795.6	40.14	20.822	
6,100.0	5,960.6	6,044.3	5,979.5	26.2	19.8	137.09	752.6	373.5	835.8	795.0	40.81	20.478	
6,200.0	6,060.6	6,143.0	6,076.8	26.3	20.2	119.74	767.5	380.0	834.0	797.3	36.70	22.726	
6,300.0	6,160.6	6,241.6	6,174.1	26.4	20.5	118.63	782.4	386.5	832.4	795.5	36.86	22.582	
6,400.0	6,260.6	6,340.2	6,271.4	26.5	20.9	117.51	797.4	393.0	831.0	794.0	37.03	22.444	
6,500.0	6,360.6	6,438.8	6,368.6	26.6	21.3	116.39	812.3	399.5	830.0	792.8	37.20	22.312	
6,600.0	6,460.6	6,537.5	6,465.9	26.8	21.6	115.27	827.2	406.0	829.3	791.9	37.38	22.187	
6,700.0	6,560.6	6,636.1	6,563.2	26.9	22.0	114.14	842.2	412.5	829.0	791.4	37.57	22.066	
6,758.4	6,619.0	6,693.7	6,620.0	26.9	22.2	113.48	850.9	416.2	828.9	791.2	37.68	21.998	
6,800.0	6,660.6	6,734.7	6,660.5	27.0	22.4	113.02	857.1	419.0	828.9	791.2	37.76	21.950	
6,900.0	6,760.6	6,833.4	6,757.7	27.1	22.7	111.89	872.0	425.4	829.2	791.3	37.97	21.839	
7,000.0	6,860.4	6,932.1	6,855.1	27.2	23.1	21.10	887.0	431.9	825.5	779.0	46.54	17.737	
7,100.0	6,957.6	7,029.5	6,951.2	27.2	23.5	21.35	901.7	438.3	805.0	759.9	45.12	17.843	
7,200.0	7,048.7	7,122.0	7,042.4	27.2	23.8	22.96	915.7	444.4	767.5	725.3	42.20	18.186	
7,300.0	7,130.3	7,206.2	7,125.5	27.1	24.1	26.45	928.5	450.0	714.3	676.2	38.11	18.743	
7,400.0	7,199.3	7,279.1	7,197.4	27.1	24.4	32.96	939.5	454.8	647.6	613.9	33.72	19.203	
7,500.0	7,253.3	7,337.9	7,255.4	27.0	24.6	44.57	948.4	458.6	570.4	539.0	31.41	18.163	
7,600.0	7,290.3	7,380.5	7,297.4	26.9	24.8	63.28	954.9	461.4	486.8	452.5	34.29	14.195	
7,700.0	7,308.9	7,405.3	7,321.8	26.9	24.9	85.30	958.6	463.1	402.0	362.9	39.17	10.264	
7,800.0	7,310.0	7,412.9	7,329.4	27.0	24.9	94.72	959.8	463.6	324.4	283.2	41.29	7.858	
7,900.0	7,310.0	7,419.5	7,335.9	27.4	24.9	96.41	960.8	464.0	261.0	218.1	42.91	6.084	
8,000.0	7,310.0	7,426.2	7,342.4	28.1	25.0	98.10	961.8	464.4	225.7	181.0	44.70	5.049	
8,036.4	7,310.0	7,428.6	7,344.8	28.5	25.0	98.72	962.2	464.6	222.8	177.3	45.41	4.906 SF	
8,100.0	7,310.0	7,432.8	7,348.9	29.3	25.0	99.80	962.8	464.9	231.6	185.0	46.62	4.968	
8,200.0	7,310.0	7,439.4	7,355.4	31.0	25.0	101.49	963.8	465.3	276.2	227.5	48.62	5.680	
8,300.0	7,310.0	7,446.0	7,361.9	32.9	25.0	103.18	964.8	465.7	344.7	294.0	50.67	6.803	
8,400.0	7,310.0	7,452.6	7,368.5	35.0	25.1	104.86	965.8	466.2	425.7	373.0	52.73	8.073	
8,500.0	7,310.0	7,459.2	7,375.0	37.3	25.1	106.53	966.8	466.6	513.4	458.6	54.80	9.369	
8,600.0	7,310.0	7,465.8	7,381.5	39.6	25.1	108.19	967.8	467.0	604.9	548.0	56.85	10.640	
8,700.0	7,310.0	7,472.4	7,388.0	42.0	25.1	109.83	968.8	467.5	698.6	639.7	58.87	11.868	
8,800.0	7,310.0	7,479.0	7,394.5	44.4	25.2	111.45	969.8	467.9	793.8	733.0	60.84	13.048	
8,900.0	7,310.0	7,485.6	7,401.0	46.9	25.2	113.06	970.8	468.3	890.0	827.3	62.76	14.183	
9,000.0	7,310.0	7,492.2	7,407.6	49.4	25.2	114.64	971.8	468.8	987.0	922.3	64.61	15.275	

Company:	Synergy Resources	Local Co-ordinate Reference:	Well SRC Union 11HZC
Project:	SEC.5-T2N-R68W	TVD Reference:	WELL @ 4976.0ft (RKB - 13')
Reference Site:	SRC Union Pad Sec.5-T2N-R68W	MD Reference:	WELL @ 4976.0ft (RKB - 13')
Site Error:	0.0ft	North Reference:	True
Reference Well:	SRC Union 11HZC	Survey Calculation Method:	Minimum Curvature
Well Error:	0.0ft	Output errors are at	2.00 sigma
Reference Wellbore	Wellbore #1	Database:	Landmark
Reference Design:	Plan #2 (4-08-13)	Offset TVD Reference:	Offset Datum

Offset Design SRC Union Pad Sec.5-T2N-R68W - SRC Union 11HZN - Wellbore #1 - Plan #2 (4-08-13)													Offset Site Error:	0.0 ft
Survey Program: 0-MWD													Offset Well Error:	0.0 ft
Reference		Offset		Semi Major Axis			Distance							Warning
Measured Depth (ft)	Vertical Depth (ft)	Measured Depth (ft)	Vertical Depth (ft)	Reference (ft)	Offset (ft)	Highside Toolface (°)	Offset Wellbore Centre +N/-S (ft)	+E/-W (ft)	Between Centres (ft)	Between Ellipses (ft)	Minimum Separation (ft)	Separation Factor		
0.0	0.0	0.0	0.0	0.0	0.0	69.69	6.9	18.7	20.0	20.0	0.00	N/A		
100.0	100.0	100.0	100.0	0.1	0.1	69.69	6.9	18.7	20.0	19.7	0.22	88.828		
200.0	200.0	200.0	200.0	0.3	0.3	69.69	6.9	18.7	20.0	19.3	0.67	29.609		
290.1	290.1	290.1	290.1	0.5	0.5	90.00	6.9	18.7	19.9	18.8	1.08	18.460 CC		
300.0	300.0	300.0	300.0	0.6	0.6	90.94	6.9	18.7	19.9	18.8	1.12	17.732 ES		
400.0	399.8	399.8	399.8	0.8	0.8	105.56	6.9	18.7	20.7	19.1	1.58	13.094		
500.0	499.5	499.5	499.5	1.0	1.0	125.48	6.9	18.7	24.5	22.5	2.05	11.947		
600.0	598.7	598.7	598.7	1.3	1.2	142.77	6.9	18.7	33.1	30.6	2.53	13.105		
700.0	697.5	698.9	698.9	1.7	1.5	153.65	8.5	18.2	45.0	42.0	2.99	15.044		
800.0	795.6	799.6	799.5	2.0	1.7	160.02	13.5	16.5	57.8	54.3	3.45	16.743		
900.0	893.1	900.9	900.3	2.5	1.9	164.18	21.9	13.6	70.8	66.9	3.92	18.081		
1,000.0	990.3	1,002.9	1,001.6	2.9	2.2	166.80	33.7	9.5	81.6	77.2	4.40	18.546		
1,100.0	1,087.5	1,105.6	1,103.0	3.4	2.5	168.46	49.0	4.2	89.0	84.1	4.90	18.164		
1,200.0	1,184.8	1,208.7	1,204.1	3.8	2.8	169.57	67.8	-2.2	92.9	87.5	5.41	17.159		
1,300.0	1,282.0	1,308.6	1,301.8	4.3	3.2	170.44	87.7	-9.1	95.2	89.2	5.93	16.043		
1,400.0	1,379.2	1,408.6	1,399.6	4.8	3.6	171.26	107.5	-15.9	97.4	91.0	6.45	15.099		
1,500.0	1,476.5	1,508.6	1,497.3	5.3	4.0	172.05	127.3	-22.7	99.7	92.8	6.98	14.293		
1,600.0	1,573.7	1,608.5	1,595.1	5.8	4.4	172.80	147.1	-29.5	102.1	94.6	7.50	13.600		
1,700.0	1,671.0	1,708.5	1,692.8	6.2	4.8	173.52	166.9	-36.4	104.4	96.4	8.03	12.995		
1,800.0	1,768.2	1,808.4	1,790.5	6.7	5.3	174.21	186.8	-43.2	106.7	98.2	8.56	12.464		
1,900.0	1,865.4	1,908.4	1,888.3	7.2	5.7	174.87	206.6	-50.0	109.1	100.0	9.10	11.995		
2,000.0	1,962.7	2,008.4	1,986.0	7.7	6.1	175.50	226.4	-56.8	111.5	101.8	9.63	11.577		
2,100.0	2,059.9	2,108.3	2,083.8	8.2	6.5	176.10	246.2	-63.7	113.9	103.7	10.16	11.202		
2,200.0	2,157.1	2,208.3	2,181.5	8.7	7.0	176.68	266.1	-70.5	116.3	105.6	10.70	10.864		
2,300.0	2,254.4	2,308.3	2,279.2	9.2	7.4	177.24	285.9	-77.3	118.7	107.4	11.24	10.558		
2,400.0	2,351.6	2,408.2	2,377.0	9.6	7.9	177.77	305.7	-84.1	121.1	109.3	11.78	10.279		
2,500.0	2,448.8	2,508.2	2,474.7	10.1	8.3	178.28	325.5	-90.9	123.5	111.2	12.32	10.024		
2,600.0	2,546.1	2,608.2	2,572.5	10.6	8.7	178.77	345.4	-97.8	126.0	113.1	12.87	9.790		
2,700.0	2,643.3	2,708.1	2,670.2	11.1	9.2	179.25	365.2	-104.6	128.4	115.0	13.41	9.574		
2,800.0	2,740.5	2,808.1	2,768.0	11.6	9.6	179.70	385.0	-111.4	130.9	116.9	13.96	9.375		
2,900.0	2,837.8	2,908.1	2,865.7	12.1	10.1	-179.86	404.8	-118.2	133.4	118.9	14.51	9.190		
3,000.0	2,935.0	3,008.0	2,963.4	12.6	10.5	-179.43	424.6	-125.1	135.8	120.8	15.06	9.018		
3,100.0	3,032.2	3,108.0	3,061.2	13.1	11.0	-179.03	444.5	-131.9	138.3	122.7	15.62	8.857		
3,200.0	3,129.5	3,207.9	3,158.9	13.5	11.4	-178.63	464.3	-138.7	140.8	124.6	16.17	8.707		
3,300.0	3,226.7	3,307.9	3,256.7	14.0	11.8	-178.25	484.1	-145.5	143.3	126.6	16.73	8.567		
3,400.0	3,323.9	3,407.9	3,354.4	14.5	12.3	-177.89	503.9	-152.4	145.8	128.5	17.29	8.435		
3,500.0	3,421.2	3,507.8	3,452.1	15.0	12.7	-177.53	523.8	-159.2	148.3	130.5	17.85	8.310		
3,600.0	3,518.4	3,607.8	3,549.9	15.5	13.2	-177.19	543.6	-166.0	150.8	132.4	18.41	8.193		
3,700.0	3,615.6	3,707.8	3,647.6	16.0	13.6	-176.86	563.4	-172.8	153.4	134.4	18.97	8.083		
3,800.0	3,712.9	3,807.7	3,745.4	16.5	14.1	-176.54	583.2	-179.7	155.9	136.3	19.54	7.978		
3,900.0	3,810.1	3,907.7	3,843.1	17.0	14.5	-176.23	603.0	-186.5	158.4	138.3	20.11	7.879		
4,000.0	3,907.3	4,007.7	3,940.8	17.5	15.0	-175.93	622.9	-193.3	160.9	140.3	20.67	7.785		
4,100.0	4,004.6	4,107.6	4,038.6	17.9	15.4	-175.64	642.7	-200.1	163.5	142.2	21.24	7.696		
4,200.0	4,101.8	4,207.6	4,136.3	18.4	15.9	-175.35	662.5	-206.9	166.0	144.2	21.82	7.610		
4,300.0	4,199.0	4,307.6	4,234.1	18.9	16.3	-175.08	682.3	-213.8	168.6	146.2	22.39	7.530		
4,400.0	4,296.3	4,407.5	4,331.8	19.4	16.8	-174.81	702.2	-220.6	171.1	148.2	22.96	7.452		
4,500.0	4,393.5	4,507.5	4,429.6	19.9	17.2	-174.56	722.0	-227.4	173.7	150.1	23.54	7.379		
4,600.0	4,490.7	4,607.4	4,527.3	20.4	17.7	-174.31	741.8	-234.2	176.2	152.1	24.11	7.308		
4,700.0	4,588.0	4,707.4	4,625.0	20.9	18.1	-174.06	761.6	-241.1	178.8	154.1	24.69	7.241		
4,800.0	4,685.2	4,807.4	4,722.8	21.4	18.6	-173.83	781.4	-247.9	181.4	156.1	25.27	7.176		
4,900.0	4,782.4	4,907.3	4,820.5	21.9	19.0	-173.60	801.3	-254.7	183.9	158.1	25.85	7.114		
5,000.0	4,879.7	5,007.3	4,918.3	22.3	19.5	-173.37	821.1	-261.5	186.5	160.1	26.43	7.055		

CC - Min centre to center distance or convergent point, SF - min separation factor, ES - min ellipse separation

Company:	Synergy Resources	Local Co-ordinate Reference:	Well SRC Union 11H2C
Project:	SEC.5-T2N-R68W	TVD Reference:	WELL @ 4976.0ft (RKB - 13')
Reference Site:	SRC Union Pad Sec.5-T2N-R68W	MD Reference:	WELL @ 4976.0ft (RKB - 13')
Site Error:	0.0ft	North Reference:	True
Reference Well:	SRC Union 11H2C	Survey Calculation Method:	Minimum Curvature
Well Error:	0.0ft	Output errors are at	2.00 sigma
Reference Wellbore	Wellbore #1	Database:	Landmark
Reference Design:	Plan #2 (4-08-13)	Offset TVD Reference:	Offset Datum

Offset Design												Offset Site Error:	0.0ft
Survey Program: 0-MWD												Offset Well Error:	0.0ft
Reference		Offset		Semi Major Axis			Distance						Warning
Measured Depth (ft)	Vertical Depth (ft)	Measured Depth (ft)	Vertical Depth (ft)	Reference (ft)	Offset (ft)	Highside Toolface (°)	Offset Wellbore Centre +N/-S (ft)	+E/-W (ft)	Between Centres (ft)	Between Ellipses (ft)	Minimum Separation (ft)	Separation Factor	
5,100.0	4,976.9	5,107.3	5,016.0	22.8	19.9	-173.15	840.9	-268.4	189.1	162.0	27.02	6.998	
5,200.0	5,074.1	5,207.2	5,113.7	23.3	20.3	-172.94	860.7	-275.2	191.6	164.0	27.60	6.943	
5,300.0	5,171.4	5,307.2	5,211.5	23.8	20.8	-172.74	880.6	-282.0	194.2	166.0	28.19	6.890	
5,400.0	5,268.6	5,407.2	5,309.2	24.3	21.2	-172.54	900.4	-288.8	196.8	168.0	28.77	6.839	
5,500.0	5,365.9	5,507.1	5,407.0	24.8	21.7	-172.33	920.2	-295.7	199.1	169.8	29.36	6.783	
5,600.0	5,463.8	5,607.1	5,504.7	25.1	22.1	-172.03	940.0	-302.5	198.8	168.9	29.91	6.646	
5,700.0	5,562.3	5,707.0	5,602.4	25.4	22.6	-171.56	959.8	-309.3	194.9	164.5	30.44	6.404	
5,800.0	5,661.4	5,806.7	5,699.9	25.7	23.0	-170.89	979.6	-316.1	187.7	156.7	30.95	6.062	
5,900.0	5,760.9	5,905.1	5,796.1	25.9	23.5	-169.99	999.1	-322.8	177.1	145.6	31.47	5.627	
6,000.0	5,860.0	6,000.0	5,889.3	26.1	23.8	-168.94	1,015.9	-328.6	165.2	133.3	31.91	5.177	
6,100.0	5,960.6	6,093.0	5,981.2	26.2	24.1	-167.80	1,029.6	-333.3	153.1	120.8	32.33	4.738	
6,200.0	6,060.6	6,187.6	6,075.1	26.3	24.3	177.18	1,040.5	-337.1	141.6	92.1	49.47	2.862	
6,300.0	6,160.6	6,282.8	6,169.9	26.4	24.5	178.21	1,048.6	-339.9	133.0	83.3	49.63	2.679	
6,400.0	6,260.6	6,378.5	6,265.4	26.5	24.7	178.93	1,053.8	-341.6	127.6	77.8	49.79	2.562	
6,500.0	6,360.6	6,474.5	6,361.4	26.6	24.8	179.25	1,055.9	-342.4	125.3	75.4	49.98	2.508	
6,541.4	6,402.0	6,515.1	6,402.0	26.7	24.8	179.26	1,055.9	-342.4	125.3	75.2	50.08	2.502	
6,600.0	6,460.6	6,573.7	6,460.6	26.8	24.9	179.26	1,055.9	-342.4	125.3	75.1	50.22	2.495	
6,629.7	6,490.3	6,603.4	6,490.3	26.8	24.9	179.20	1,055.9	-342.3	125.3	75.0	50.30	2.491	
6,700.0	6,560.6	6,672.8	6,559.4	26.9	25.0	176.41	1,055.9	-336.2	125.5	74.7	50.86	2.468 SF	
6,800.0	6,660.6	6,766.4	6,650.1	27.0	25.0	166.32	1,056.0	-313.5	129.3	77.4	51.91	2.491	
6,900.0	6,760.6	6,850.0	6,726.5	27.1	25.0	152.88	1,056.0	-279.9	144.7	93.1	51.62	2.803	
7,000.0	6,860.4	6,922.9	6,788.0	27.2	24.9	49.46	1,056.1	-240.9	174.9	137.9	36.98	4.729	
7,100.0	6,957.6	6,992.6	6,841.2	27.2	24.9	39.58	1,056.2	-196.0	209.1	170.6	38.54	5.426	
7,200.0	7,048.7	7,059.9	6,886.5	27.2	24.8	33.00	1,056.3	-146.1	242.3	204.5	37.81	6.409	
7,300.0	7,130.3	7,125.6	6,924.0	27.1	24.7	28.58	1,056.4	-92.3	271.9	236.9	35.02	7.765	
7,400.0	7,199.3	7,190.1	6,954.1	27.1	24.7	25.61	1,056.5	-35.3	296.7	265.9	30.76	9.644	
7,500.0	7,253.3	7,250.0	6,975.5	27.0	24.6	23.71	1,056.6	20.6	315.7	289.9	25.76	12.255	
7,600.0	7,290.3	7,316.7	6,991.6	26.9	24.6	22.49	1,056.7	85.3	328.4	307.2	21.19	15.494	
7,700.0	7,308.9	7,379.4	6,999.1	26.9	24.6	21.95	1,056.8	147.5	334.6	316.0	18.58	18.003	
7,800.0	7,310.0	7,459.9	7,000.0	27.0	24.7	21.96	1,056.9	228.0	334.2	315.1	19.14	17.459	
7,900.0	7,310.0	7,559.9	7,000.0	27.4	25.1	21.96	1,057.1	328.0	334.2	313.8	20.40	16.381	
8,000.0	7,310.0	7,659.9	7,000.0	28.1	26.1	21.96	1,057.3	428.0	334.2	312.4	21.87	15.281	
8,100.0	7,310.0	7,759.9	7,000.0	29.3	27.7	21.96	1,057.5	528.0	334.2	310.7	23.52	14.214	
8,200.0	7,310.0	7,859.9	7,000.0	31.0	29.6	21.96	1,057.7	628.0	334.2	308.9	25.30	13.213	
8,300.0	7,310.0	7,959.9	7,000.0	32.9	31.7	21.96	1,057.8	728.0	334.2	307.1	27.19	12.293	
8,400.0	7,310.0	8,059.9	7,000.0	35.0	33.9	21.96	1,058.0	828.0	334.2	305.1	29.17	11.457	
8,500.0	7,310.0	8,159.9	7,000.0	37.3	36.2	21.96	1,058.2	928.0	334.2	303.0	31.23	10.703	
8,600.0	7,310.0	8,259.9	7,000.0	39.6	38.6	21.96	1,058.4	1,028.0	334.2	300.9	33.34	10.024	
8,700.0	7,310.0	8,359.9	7,000.0	42.0	41.1	21.96	1,058.6	1,128.0	334.2	298.7	35.51	9.413	
8,800.0	7,310.0	8,459.9	7,000.0	44.4	43.6	21.96	1,058.8	1,228.0	334.2	296.5	37.71	8.863	
8,900.0	7,310.0	8,559.9	7,000.0	46.9	46.1	21.96	1,059.0	1,328.0	334.2	294.3	39.95	8.366	
9,000.0	7,310.0	8,659.9	7,000.0	49.4	48.6	21.96	1,059.1	1,428.0	334.2	292.0	42.22	7.917	
9,100.0	7,310.0	8,759.9	7,000.0	52.0	51.2	21.96	1,059.3	1,528.0	334.2	289.7	44.51	7.510	
9,200.0	7,310.0	8,859.9	7,000.0	54.6	53.8	21.96	1,059.5	1,628.0	334.2	287.4	46.82	7.139	
9,300.0	7,310.0	8,959.9	7,000.0	57.2	56.4	21.96	1,059.7	1,728.0	334.2	285.1	49.15	6.801	
9,400.0	7,310.0	9,059.9	7,000.0	59.8	59.1	21.96	1,059.9	1,828.0	334.2	282.7	51.49	6.491	
9,500.0	7,310.0	9,159.9	7,000.0	62.4	61.7	21.96	1,060.1	1,928.0	334.2	280.4	53.85	6.207	
9,600.0	7,310.0	9,259.9	7,000.0	65.1	64.4	21.96	1,060.3	2,028.0	334.2	278.0	56.22	5.946	
9,700.0	7,310.0	9,359.9	7,000.0	67.7	67.1	21.96	1,060.4	2,128.0	334.2	275.6	58.60	5.704	
9,800.0	7,310.0	9,459.9	7,000.0	70.4	69.8	21.96	1,060.6	2,228.0	334.2	273.3	60.98	5.481	
9,900.0	7,310.0	9,559.9	7,000.0	73.1	72.4	21.96	1,060.8	2,328.0	334.2	270.9	63.38	5.274	
10,000.0	7,310.0	9,659.9	7,000.0	75.8	75.1	21.96	1,061.0	2,428.0	334.2	268.5	65.78	5.081	

CC - Min centre to center distance or convergent point, SF - min separation factor, ES - min ellipse separation

Company:	Synergy Resources	Local Co-ordinate Reference:	Well SRC Union 11HZC
Project:	SEC.5-T2N-R68W	TVD Reference:	WELL @ 4976.0ft (RKB - 13')
Reference Site:	SRC Union Pad Sec.5-T2N-R68W	MD Reference:	WELL @ 4976.0ft (RKB - 13')
Site Error:	0.0ft	North Reference:	True
Reference Well:	SRC Union 11HZC	Survey Calculation Method:	Minimum Curvature
Well Error:	0.0ft	Output errors are at	2.00 sigma
Reference Wellbore	Wellbore #1	Database:	Landmark
Reference Design:	Plan #2 (4-08-13)	Offset TVD Reference:	Offset Datum

Offset Design												Offset Site Error:	0.0 ft
SRC Union Pad Sec.5-T2N-R68W - SRC Union 11HZN - Wellbore #1 - Plan #2 (4-08-13)												Offset Well Error:	0.0 ft
Survey Program: 0-MWD													
Reference		Offset		Semi Major Axis			Distance						
Measured Depth (ft)	Vertical Depth (ft)	Measured Depth (ft)	Vertical Depth (ft)	Reference (ft)	Offset (ft)	Highside Toolface (°)	Offset Wellbore Centre +N/-S (ft)	+E/-W (ft)	Between Centres (ft)	Between Ellipses (ft)	Minimum Separation (ft)	Separation Factor	Warning
10,100.0	7,310.0	9,759.9	7,000.0	78.4	77.9	21.95	1,061.2	2,528.0	334.2	266.0	68.19	4.902	
10,200.0	7,310.0	9,859.9	7,000.0	81.2	80.6	21.95	1,061.4	2,628.0	334.2	263.6	70.60	4.734	
10,300.0	7,310.0	9,959.9	7,000.0	83.9	83.3	21.95	1,061.6	2,728.0	334.2	261.2	73.02	4.577	
10,400.0	7,310.0	10,059.9	7,000.0	86.6	86.0	21.95	1,061.7	2,828.0	334.2	258.8	75.45	4.430	
10,500.0	7,310.0	10,159.9	7,000.0	89.3	88.8	21.95	1,061.9	2,928.0	334.2	256.4	77.88	4.292	
10,600.0	7,310.0	10,259.9	7,000.0	92.0	91.5	21.95	1,062.1	3,028.0	334.2	253.9	80.31	4.162	
10,700.0	7,310.0	10,359.9	7,000.0	94.8	94.2	21.95	1,062.3	3,128.0	334.2	251.5	82.74	4.039	
10,800.0	7,310.0	10,459.9	7,000.0	97.5	97.0	21.95	1,062.5	3,228.0	334.2	249.1	85.18	3.924	
10,900.0	7,310.0	10,559.9	7,000.0	100.2	99.7	21.95	1,062.7	3,328.0	334.2	246.6	87.63	3.814	
11,000.0	7,310.0	10,659.9	7,000.0	103.0	102.5	21.95	1,062.8	3,428.0	334.2	244.2	90.07	3.711	
11,100.0	7,310.0	10,759.9	7,000.0	105.7	105.2	21.95	1,063.0	3,528.0	334.2	241.7	92.52	3.613	
11,200.0	7,310.0	10,859.9	7,000.0	108.5	108.0	21.95	1,063.2	3,628.0	334.2	239.3	94.97	3.520	
11,300.0	7,310.0	10,959.9	7,000.0	111.2	110.7	21.95	1,063.4	3,728.0	334.2	236.8	97.42	3.431	
11,400.0	7,310.0	11,059.9	7,000.0	114.0	113.5	21.95	1,063.6	3,828.0	334.2	234.4	99.87	3.347	
11,500.0	7,310.0	11,159.9	7,000.0	116.7	116.2	21.95	1,063.8	3,928.0	334.2	231.9	102.32	3.266	
11,600.0	7,310.0	11,259.9	7,000.0	119.5	119.0	21.95	1,064.0	4,028.0	334.2	229.5	104.78	3.190	
11,700.0	7,310.0	11,359.9	7,000.0	122.2	121.8	21.95	1,064.1	4,128.0	334.2	227.0	107.24	3.117	
11,800.0	7,310.0	11,459.9	7,000.0	125.0	124.5	21.95	1,064.3	4,228.0	334.2	224.5	109.70	3.047	
11,900.0	7,310.0	11,559.9	7,000.0	127.8	127.3	21.95	1,064.5	4,328.0	334.2	222.1	112.16	2.980	
12,000.0	7,310.0	11,659.9	7,000.0	130.5	130.1	21.95	1,064.7	4,428.0	334.2	219.6	114.62	2.916	
12,100.0	7,310.0	11,759.9	7,000.0	133.3	132.9	21.95	1,064.9	4,528.0	334.2	217.1	117.09	2.855	
12,111.1	7,310.0	11,771.0	7,000.0	133.6	133.2	21.95	1,064.9	4,539.1	334.2	216.9	117.36	2.848	
12,113.6	7,310.0	11,771.1	7,000.0	133.7	133.2	21.95	1,064.9	4,539.2	334.2	216.9	117.39	2.847	

SRC Union Pad Sec.5-T2N-R68W - SRC Union 12-5D - Wellbore #1 - Plan #1 (1-03-13)													Offset Site Error:	0.0 ft
Survey Program: 0-MWD													Offset Well Error:	0.0 ft
Reference		Offset		Semi Major Axis			Distance							
Measured Depth (ft)	Vertical Depth (ft)	Measured Depth (ft)	Vertical Depth (ft)	Reference (ft)	Offset (ft)	Highside Toolface (°)	Offset Wellbore Centre +N/-S (ft)	+E/-W (ft)	Between Centres (ft)	Between Ellipses (ft)	Minimum Separation (ft)	Separation Factor	Warning	
0.0	0.0	2.0	2.0	0.0	0.0	68.93	50.3	130.5	139.9	139.9	0.00	N/A		
100.0	100.0	102.0	102.0	0.1	0.1	68.93	50.3	130.5	139.9	139.6	0.23	610.054		
200.0	200.0	202.0	202.0	0.3	0.3	68.93	50.3	130.5	139.9	139.2	0.68	206.045		
300.0	300.0	302.0	302.0	0.6	0.6	85.88	50.3	130.5	139.7	138.6	1.13	123.937		
400.0	399.8	402.6	402.6	0.8	0.8	88.41	49.4	130.5	139.2	137.6	1.56	89.308		
500.0	499.5	502.6	502.6	1.0	1.0	93.07	46.7	130.5	138.6	136.6	2.00	69.280		
518.7	518.1	521.2	521.2	1.1	1.0	94.18	46.0	130.5	138.5	136.4	2.09	66.240 CC, ES		
600.0	598.7	601.7	601.5	1.3	1.2	99.76	42.3	130.5	139.2	136.7	2.49	55.955		
700.0	697.5	699.5	699.2	1.7	1.4	107.80	37.2	130.5	142.8	139.7	3.02	47.295		
800.0	795.6	796.6	796.2	2.0	1.6	116.32	32.1	130.5	150.6	147.1	3.58	42.105		
900.0	893.1	892.8	892.2	2.5	1.8	124.74	27.1	130.5	163.6	159.5	4.14	39.513		
1,000.0	990.3	986.6	985.9	2.9	2.0	131.92	22.3	131.1	181.0	176.4	4.67	38.781 SF		
1,100.0	1,087.5	1,080.2	1,079.4	3.4	2.3	137.51	18.0	133.3	202.0	196.8	5.17	39.105		
1,200.0	1,184.8	1,173.8	1,172.8	3.8	2.5	141.77	13.9	136.9	225.6	219.9	5.65	39.943		
1,300.0	1,282.0	1,267.1	1,266.0	4.3	2.7	144.94	10.2	142.0	251.1	245.0	6.12	41.006		
1,400.0	1,379.2	1,360.3	1,358.9	4.8	2.9	147.28	6.9	148.5	278.2	271.6	6.60	42.140		
1,500.0	1,476.5	1,453.3	1,451.4	5.3	3.1	148.95	4.0	156.5	306.4	299.4	7.08	43.263		
1,600.0	1,573.7	1,547.5	1,545.2	5.8	3.4	150.18	1.3	165.8	335.6	328.0	7.58	44.299		
1,700.0	1,671.0	1,642.9	1,640.1	6.2	3.6	151.20	-1.4	175.4	364.9	356.9	8.07	45.213		
1,800.0	1,768.2	1,738.3	1,734.9	6.7	3.9	152.07	-4.1	185.0	394.4	385.8	8.57	46.007		
1,900.0	1,865.4	1,833.7	1,829.8	7.2	4.1	152.82	-6.8	194.6	423.9	414.8	9.08	46.696		
2,000.0	1,962.7	1,929.2	1,924.7	7.7	4.4	153.47	-9.5	204.3	453.4	443.8	9.59	47.302		
2,100.0	2,059.9	2,024.6	2,019.6	8.2	4.7	154.04	-12.2	213.9	483.0	472.9	10.10	47.837		
2,200.0	2,157.1	2,120.0	2,114.5	8.7	4.9	154.55	-14.8	223.5	512.7	502.1	10.61	48.310		
2,300.0	2,254.4	2,215.4	2,209.4	9.2	5.2	155.00	-17.5	233.1	542.4	531.2	11.13	48.732		
2,400.0	2,351.6	2,310.8	2,304.3	9.6	5.5	155.40	-20.2	242.7	572.1	560.4	11.65	49.108		
2,500.0	2,448.8	2,406.2	2,399.2	10.1	5.7	155.77	-22.9	252.3	601.8	589.6	12.17	49.447		
2,600.0	2,546.1	2,501.6	2,494.1	10.6	6.0	156.10	-25.6	261.9	631.5	618.9	12.69	49.751		
2,700.0	2,643.3	2,597.0	2,588.9	11.1	6.3	156.40	-28.3	271.5	661.3	648.1	13.22	50.027		
2,800.0	2,740.5	2,692.5	2,683.8	11.6	6.6	156.67	-31.0	281.1	691.1	677.4	13.75	50.278		
2,900.0	2,837.8	2,787.9	2,778.7	12.1	6.8	156.93	-33.7	290.7	720.9	706.6	14.27	50.507		
3,000.0	2,935.0	2,883.3	2,873.6	12.6	7.1	157.16	-36.4	300.3	750.7	735.9	14.80	50.716		
3,100.0	3,032.2	2,978.7	2,968.5	13.1	7.4	157.37	-39.0	309.9	780.5	765.2	15.33	50.908		
3,200.0	3,129.5	3,074.1	3,063.4	13.5	7.7	157.57	-41.7	319.5	810.4	794.5	15.86	51.085		
3,300.0	3,226.7	3,169.5	3,158.3	14.0	8.0	157.75	-44.4	329.1	840.2	823.8	16.39	51.248		
3,400.0	3,323.9	3,264.9	3,253.2	14.5	8.2	157.93	-47.1	338.7	870.0	853.1	16.93	51.398		
3,500.0	3,421.2	3,360.3	3,348.1	15.0	8.5	158.09	-49.8	348.4	899.9	882.4	17.46	51.538		
3,600.0	3,518.4	3,455.7	3,442.9	15.5	8.8	158.24	-52.5	358.0	929.7	911.8	17.99	51.668		
3,700.0	3,615.6	3,551.2	3,537.8	16.0	9.1	158.38	-55.2	367.6	959.6	941.1	18.53	51.789		
3,800.0	3,712.9	3,646.6	3,632.7	16.5	9.4	158.51	-57.9	377.2	989.5	970.4	19.06	51.902		

Company:	Synergy Resources	Local Co-ordinate Reference:	Well SRC Union 11HZC
Project:	SEC.5-T2N-R68W	TVD Reference:	WELL @ 4976.0ft (RKB - 13')
Reference Site:	SRC Union Pad Sec.5-T2N-R68W	MD Reference:	WELL @ 4976.0ft (RKB - 13')
Site Error:	0.0ft	North Reference:	True
Reference Well:	SRC Union 11HZC	Survey Calculation Method:	Minimum Curvature
Well Error:	0.0ft	Output errors are at	2.00 sigma
Reference Wellbore	Wellbore #1	Database:	Landmark
Reference Design:	Plan #2 (4-08-13)	Offset TVD Reference:	Offset Datum

Offset Design SRC Union Pad Sec.5-T2N-R68W - SRC Union 12HZC - Wellbore #1 - Plan #2 (4-08-13)													Offset Site Error: 0.0 ft
Survey Program: 0-MWD													Offset Well Error: 0.0 ft
Reference	Offset	Semi Major Axis		Distance		Warning							
Measured Depth (ft)	Vertical Depth (ft)	Measured Depth (ft)	Vertical Depth (ft)	Reference (ft)	Offset (ft)	Highside Toolface (°)	Offset Wellbore Centre +N/-S (ft)	+E/-W (ft)	Between Centres (ft)	Between Ellipses (ft)	Minimum Separation (ft)	Separation Factor	
0.0	0.0	1.0	1.0	0.0	0.0	69.08	14.2	37.2	39.8	39.8	0.00	N/A	
100.0	100.0	101.0	101.0	0.1	0.1	69.08	14.2	37.2	39.8	39.6	0.23	175.291	
200.0	200.0	201.0	201.0	0.3	0.3	69.08	14.2	37.2	39.8	39.1	0.68	58.819	
300.0	300.0	301.0	301.0	0.6	0.6	87.83	14.2	37.2	39.7	38.6	1.13	35.261	
336.5	336.5	337.5	337.5	0.7	0.6	90.00	14.2	37.2	39.7	38.4	1.29	30.700 CC	
400.0	399.8	400.8	400.8	0.8	0.8	95.35	14.2	37.2	39.8	38.3	1.58	25.198 ES	
500.0	499.5	500.5	500.5	1.0	1.0	107.33	14.2	37.2	41.6	39.5	2.05	20.236	
600.0	598.7	599.7	599.7	1.3	1.2	121.59	14.2	37.2	46.7	44.1	2.55	18.341 SF	
700.0	697.5	698.5	698.5	1.7	1.5	135.00	14.2	37.2	56.5	53.5	3.04	18.602	
800.0	795.6	796.6	796.6	2.0	1.7	145.66	14.2	37.2	71.4	67.9	3.52	20.272	
900.0	893.1	894.1	894.1	2.5	1.9	153.48	14.2	37.2	90.9	86.9	3.99	22.751	
1,000.0	990.3	991.3	991.3	2.9	2.1	158.79	14.2	37.2	112.3	107.9	4.46	25.185	
1,100.0	1,087.5	1,088.5	1,088.5	3.4	2.3	162.38	14.2	37.2	134.4	129.5	4.93	27.278	
1,200.0	1,184.8	1,185.8	1,185.8	3.8	2.6	164.96	14.2	37.2	156.9	151.5	5.40	29.059	
1,300.0	1,282.0	1,283.0	1,283.0	4.3	2.8	166.89	14.2	37.2	179.6	173.7	5.87	30.579	
1,400.0	1,379.2	1,380.2	1,380.2	4.8	3.0	168.39	14.2	37.2	202.5	196.1	6.35	31.883	
1,500.0	1,476.5	1,477.5	1,477.5	5.3	3.2	169.58	14.2	37.2	225.4	218.6	6.83	33.010	
1,600.0	1,573.7	1,573.1	1,573.1	5.8	3.4	170.76	13.6	36.4	248.7	241.4	7.29	34.123	
1,700.0	1,671.0	1,667.7	1,667.6	6.2	3.6	172.36	11.1	33.4	272.9	265.1	7.72	35.323	
1,800.0	1,768.2	1,761.2	1,760.8	6.7	3.8	174.27	6.6	28.0	298.2	290.0	8.16	36.539	
1,900.0	1,865.4	1,853.6	1,852.7	7.2	4.0	176.39	0.3	20.4	324.8	316.2	8.61	37.730	
2,000.0	1,962.7	1,946.3	1,944.5	7.7	4.2	178.64	-7.8	10.6	353.0	343.9	9.08	38.870	
2,100.0	2,059.9	2,041.2	2,038.4	8.2	4.4	-179.30	-16.4	0.1	381.8	372.2	9.58	39.872	
2,200.0	2,157.1	2,136.1	2,132.3	8.7	4.6	-177.53	-25.1	-10.3	411.0	400.9	10.09	40.746	
2,300.0	2,254.4	2,231.0	2,226.3	9.2	4.9	-175.99	-33.8	-20.8	440.5	429.9	10.61	41.513	
2,400.0	2,351.6	2,325.9	2,320.2	9.6	5.2	-174.64	-42.4	-31.3	470.3	459.2	11.15	42.187	
2,500.0	2,448.8	2,420.8	2,414.1	10.1	5.4	-173.46	-51.1	-41.8	500.3	488.7	11.69	42.785	
2,600.0	2,546.1	2,515.7	2,508.0	10.6	5.7	-172.40	-59.8	-52.2	530.5	518.3	12.25	43.319	
2,700.0	2,643.3	2,610.6	2,602.0	11.1	6.0	-171.46	-68.4	-62.7	560.9	548.0	12.81	43.797	
2,800.0	2,740.5	2,705.5	2,695.9	11.6	6.3	-170.62	-77.1	-73.2	591.3	577.9	13.37	44.227	
2,900.0	2,837.8	2,800.4	2,789.8	12.1	6.6	-169.85	-85.8	-83.6	621.9	607.9	13.94	44.617	
3,000.0	2,935.0	2,895.3	2,883.7	12.6	6.9	-169.16	-94.4	-94.1	652.5	638.0	14.51	44.971	
3,100.0	3,032.2	2,990.2	2,977.7	13.1	7.2	-168.53	-103.1	-104.6	683.2	668.2	15.08	45.295	
3,200.0	3,129.5	3,085.1	3,071.6	13.5	7.5	-167.96	-111.8	-115.1	714.0	698.4	15.66	45.591	
3,300.0	3,226.7	3,180.0	3,165.5	14.0	7.8	-167.43	-120.4	-125.5	744.9	728.6	16.24	45.864	
3,400.0	3,323.9	3,274.9	3,259.5	14.5	8.1	-166.94	-129.1	-136.0	775.8	759.0	16.82	46.116	
3,500.0	3,421.2	3,369.8	3,353.4	15.0	8.4	-166.49	-137.8	-146.5	806.8	789.3	17.41	46.349	
3,600.0	3,518.4	3,464.7	3,447.3	15.5	8.8	-166.08	-146.4	-157.0	837.7	819.8	17.99	46.565	
3,700.0	3,615.6	3,559.6	3,541.2	16.0	9.1	-165.69	-155.1	-167.4	868.8	850.2	18.58	46.766	
3,800.0	3,712.9	3,654.5	3,635.2	16.5	9.4	-165.33	-163.8	-177.9	899.8	880.7	19.16	46.954	
3,900.0	3,810.1	3,749.4	3,729.1	17.0	9.7	-164.99	-172.4	-188.4	930.9	911.2	19.75	47.130	
4,000.0	3,907.3	3,844.3	3,823.0	17.5	10.0	-164.68	-181.1	-198.8	962.1	941.7	20.34	47.294	
4,100.0	4,004.6	3,939.3	3,916.9	17.9	10.4	-164.39	-189.8	-209.3	993.2	972.3	20.93	47.449	

Offset Design SRC Union Pad Sec.5-T2N-R68W - SRC Union 12HZN - Wellbore #1 - Plan #2 (4-08-13)													Offset Site Error: 0.0 ft	
Survey Program: 0-MWD													Offset Well Error: 0.0 ft	
Reference		Offset		Semi Major Axis			Distance							
Measured Depth	Vertical Depth	Measured Depth	Vertical Depth	Reference	Offset	Highside Toolface	Offset Wellbore Centre		Between Centres	Between Ellipses	Minimum Separation	Separation Factor	Warning	
Depth (ft)	Depth (ft)	Depth (ft)	Depth (ft)	(ft)	(ft)	(°)	+N/-S (ft)	+E/-W (ft)	(ft)	(ft)	(ft)			
0.0	0.0	2.0	2.0	0.0	0.0	69.07	35.7	93.3	99.9	99.9	0.00	N/A		
100.0	100.0	102.0	102.0	0.1	0.1	69.07	35.7	93.3	99.9	99.7	0.23	435.912		
200.0	200.0	202.0	202.0	0.3	0.3	69.07	35.7	93.3	99.9	99.3	0.68	147.229		
300.0	300.0	302.0	302.0	0.6	0.6	86.30	35.7	93.3	99.8	98.7	1.13	88.496		
400.0	399.8	401.8	401.8	0.8	0.8	89.31	35.7	93.3	99.6	98.0	1.58	62.913		
416.6	416.4	418.4	418.4	0.8	0.8	90.00	35.7	93.3	99.6	97.9	1.66	59.929 CC		
500.0	499.5	501.5	501.5	1.0	1.0	94.29	35.7	93.3	99.9	97.8	2.06	48.548 ES		
600.0	598.7	600.7	600.7	1.3	1.2	101.08	35.7	93.3	101.5	99.0	2.56	39.660		
700.0	697.5	699.5	699.5	1.7	1.5	109.26	35.7	93.3	105.7	102.6	3.09	34.180		
800.0	795.6	797.6	797.6	2.0	1.7	118.12	35.7	93.3	113.5	109.9	3.64	31.162		
900.0	893.1	895.1	895.1	2.5	1.9	126.86	35.7	93.3	125.8	121.6	4.19	30.013		
1,000.0	990.3	992.3	992.3	2.9	2.1	134.36	35.7	93.3	141.3	136.5	4.71	29.970 SF		
1,100.0	1,087.5	1,089.5	1,089.5	3.4	2.3	140.33	35.7	93.3	158.7	153.5	5.21	30.442		
1,200.0	1,184.8	1,186.8	1,186.8	3.8	2.6	145.11	35.7	93.3	177.5	171.8	5.70	31.153		
1,300.0	1,282.0	1,284.0	1,284.0	4.3	2.8	148.96	35.7	93.3	197.2	191.1	6.17	31.954		
1,400.0	1,379.2	1,381.2	1,381.2	4.8	3.0	152.12	35.7	93.3	217.7	211.1	6.64	32.767		
1,500.0	1,476.5	1,478.5	1,478.5	5.3	3.2	154.73	35.7	93.3	238.7	231.6	7.11	33.555		
1,600.0	1,573.7	1,575.7	1,575.7	5.8	3.4	156.91	35.7	93.3	260.1	252.6	7.58	34.298		
1,700.0	1,671.0	1,673.0	1,673.0	6.2	3.6	158.77	35.7	93.3	281.9	273.8	8.06	34.990		
1,800.0	1,768.2	1,770.2	1,770.2	6.7	3.9	160.36	35.7	93.3	303.8	295.3	8.53	35.630		
1,900.0	1,865.4	1,868.4	1,868.4	7.2	4.1	161.89	35.3	92.6	325.9	316.9	8.98	36.273		
2,000.0	1,962.7	1,966.7	1,966.6	7.7	4.3	163.77	33.5	89.0	347.8	338.4	9.41	36.962		
2,100.0	2,059.9	2,064.2	2,063.9	8.2	4.5	165.94	30.2	82.5	369.8	360.0	9.83	37.641		
2,200.0	2,157.1	2,160.9	2,160.0	8.7	4.7	168.33	25.5	73.0	392.2	382.0	10.25	38.278		
2,300.0	2,254.4	2,256.7	2,254.8	9.2	4.9	170.83	19.6	61.3	415.3	404.6	10.68	38.869		
2,400.0	2,351.6	2,352.4	2,349.6	9.6	5.1	173.12	13.6	49.2	439.1	427.9	11.15	39.387		
2,500.0	2,448.8	2,448.1	2,444.3	10.1	5.3	175.17	7.6	37.2	463.4	451.8	11.63	39.838		
2,600.0	2,546.1	2,543.7	2,539.0	10.6	5.6	177.02	1.5	25.2	488.3	476.2	12.14	40.237		
2,700.0	2,643.3	2,639.4	2,633.7	11.1	5.9	178.69	-4.5	13.1	513.7	501.0	12.66	40.579		
2,800.0	2,740.5	2,735.1	2,728.4	11.6	6.1	-179.79	-10.5	1.1	539.4	526.2	13.19	40.881		
2,900.0	2,837.8	2,830.7	2,823.2	12.1	6.4	-178.41	-16.6	-11.0	565.4	551.7	13.74	41.147		
3,000.0	2,935.0	2,926.4	2,917.9	12.6	6.7	-177.15	-22.6	-23.0	591.8	577.5	14.30	41.383		
3,100.0	3,032.2	3,022.1	3,012.6	13.1	7.0	-175.99	-28.6	-35.1	618.3	603.5	14.87	41.592		
3,200.0	3,129.5	3,117.8	3,107.3	13.5	7.3	-174.93	-34.7	-47.1	645.1	629.7	15.44	41.779		
3,300.0	3,226.7	3,213.4	3,202.0	14.0	7.6	-173.95	-40.7	-59.1	672.1	656.1	16.02	41.948		
3,400.0	3,323.9	3,309.1	3,296.8	14.5	7.9	-173.05	-46.7	-71.2	699.3	682.7	16.61	42.101		
3,500.0	3,421.2	3,404.8	3,391.5	15.0	8.2	-172.22	-52.8	-83.2	726.6	709.4	17.20	42.240		
3,600.0	3,518.4	3,500.5	3,486.2	15.5	8.5	-171.44	-58.8	-95.3	754.0	736.2	17.80	42.367		
3,700.0	3,615.6	3,596.1	3,580.9	16.0	8.8	-170.72	-64.8	-107.3	781.6	763.2	18.40	42.484		
3,800.0	3,712.9	3,691.8	3,675.6	16.5	9.1	-170.05	-70.9	-119.3	809.2	790.2	19.00	42.592		
3,900.0	3,810.1	3,787.5	3,770.4	17.0	9.4	-169.42	-76.9	-131.4	837.0	817.4	19.61	42.692		
4,000.0	3,907.3	3,883.1	3,865.1	17.5	9.7	-168.83	-82.9	-143.4	864.9	844.6	20.21	42.786		
4,100.0	4,004.6	3,978.8	3,959.8	17.9	10.0	-168.28	-89.0	-155.5	892.8	872.0	20.82	42.873		
4,200.0	4,101.8	4,074.5	4,054.5	18.4	10.3	-167.76	-95.0	-167.5	920.8	899.3	21.44	42.955		
4,300.0	4,199.0	4,170.2	4,149.2	18.9	10.7	-167.27	-101.0	-179.6	948.9	926.8	22.05	43.031		
4,400.0	4,296.3	4,265.8	4,244.0	19.4	11.0	-166.81	-107.1	-191.6	977.0	954.3	22.67	43.104		

Company:	Synergy Resources	Local Co-ordinate Reference:	Well SRC Union 11HZC
Project:	SEC.5-T2N-R68W	TVD Reference:	WELL @ 4976.0ft (RKB - 13')
Reference Site:	SRC Union Pad Sec.5-T2N-R68W	MD Reference:	WELL @ 4976.0ft (RKB - 13')
Site Error:	0.0ft	North Reference:	True
Reference Well:	SRC Union 11HZC	Survey Calculation Method:	Minimum Curvature
Well Error:	0.0ft	Output errors are at	2.00 sigma
Reference Wellbore	Wellbore #1	Database:	Landmark
Reference Design:	Plan #2 (4-08-13)	Offset TVD Reference:	Offset Datum

Offset Design SRC Union Pad Sec.5-T2N-R68W - SRC Union 5AHZC - Wellbore #1 - Plan #2 (4-08-13)													Offset Site Error:	0.0 ft
Survey Program: 0-MWID													Offset Well Error:	0.0 ft
Reference	Offset	Semi Major Axis		Distance		Minimum		Separation		Warning				
Measured Depth (ft)	Vertical Depth (ft)	Measured Depth (ft)	Vertical Depth (ft)	Reference (ft)	Offset (ft)	Highside Toolface (°)	Offset Wellbore Centre +N/-S (ft)	+E/-W (ft)	Between Centres (ft)	Between Ellipses (ft)	Minimum Separation (ft)	Separation Factor		
0.0	0.0	2.0	2.0	0.0	0.0	69.01	43.0	112.1	120.0	120.0	0.00	N/A		
100.0	100.0	102.0	102.0	0.1	0.1	69.01	43.0	112.1	120.0	119.8	0.23	523.549		
200.0	200.0	202.0	202.0	0.3	0.3	69.01	43.0	112.1	120.0	119.4	0.68	176.828		
300.0	300.0	302.0	302.0	0.6	0.6	86.08	43.0	112.1	119.9	118.8	1.13	106.305		
400.0	399.8	401.8	401.8	0.8	0.8	88.58	43.0	112.1	119.7	118.1	1.58	75.571		
438.7	438.5	440.5	440.5	0.9	0.9	90.00	43.0	112.1	119.6	117.9	1.77	67.697 CC		
500.0	499.5	501.5	501.5	1.0	1.0	92.74	43.0	112.1	119.8	117.7	2.06	58.201 ES		
600.0	598.7	600.7	600.7	1.3	1.2	98.45	43.0	112.1	121.0	118.4	2.56	47.228		
700.0	697.5	699.5	699.5	1.7	1.5	105.45	43.0	112.1	124.2	121.1	3.10	40.111		
800.0	795.6	797.6	797.6	2.0	1.7	113.30	43.0	112.1	130.7	127.0	3.66	35.716		
900.0	893.1	895.1	895.1	2.5	1.9	121.39	43.0	112.1	141.2	137.0	4.23	33.390		
1,000.0	990.3	996.7	996.7	2.9	2.1	128.63	44.3	111.2	153.6	148.8	4.78	32.137		
1,100.0	1,087.5	1,099.9	1,099.7	3.4	2.4	134.22	48.8	108.2	164.8	159.5	5.31	31.055		
1,200.0	1,184.8	1,204.3	1,203.7	3.8	2.6	138.61	56.4	103.0	174.0	168.2	5.83	29.850		
1,300.0	1,282.0	1,309.6	1,308.2	4.3	2.9	142.14	67.2	95.7	180.6	174.3	6.35	28.435		
1,400.0	1,379.2	1,415.3	1,412.5	4.8	3.2	145.07	81.3	86.2	184.3	177.4	6.88	26.805		
1,500.0	1,476.5	1,514.9	1,510.6	5.3	3.5	147.58	96.0	76.3	186.7	179.3	7.39	25.270		
1,600.0	1,573.7	1,614.6	1,608.6	5.8	3.8	150.01	110.7	66.4	189.5	181.6	7.89	24.012		
1,700.0	1,671.0	1,714.2	1,706.7	6.2	4.1	152.38	125.4	56.4	192.6	184.2	8.38	22.967		
1,800.0	1,768.2	1,813.9	1,804.7	6.7	4.5	154.66	140.0	46.5	196.0	187.1	8.87	22.099		
1,900.0	1,865.4	1,913.5	1,902.8	7.2	4.8	156.87	154.7	36.6	199.7	190.4	9.35	21.360		
2,000.0	1,962.7	2,013.1	2,000.8	7.7	5.2	158.99	169.4	26.7	203.7	193.9	9.83	20.729		
2,100.0	2,059.9	2,112.8	2,098.9	8.2	5.6	161.02	184.1	16.8	208.0	197.7	10.31	20.184		
2,200.0	2,157.1	2,212.4	2,196.9	8.7	5.9	162.98	198.8	6.8	212.5	201.7	10.78	19.707		
2,300.0	2,254.4	2,312.0	2,295.0	9.2	6.3	164.85	213.5	-3.1	217.3	206.0	11.27	19.284		
2,400.0	2,351.6	2,411.7	2,393.0	9.6	6.7	166.63	228.2	-13.0	222.3	210.5	11.76	18.907		
2,500.0	2,448.8	2,511.3	2,491.1	10.1	7.1	168.34	242.9	-22.9	227.5	215.2	12.25	18.565		
2,600.0	2,546.1	2,611.0	2,589.1	10.6	7.5	169.97	257.5	-32.8	232.9	220.1	12.76	18.253		
2,700.0	2,643.3	2,710.6	2,687.2	11.1	7.9	171.53	272.2	-42.8	238.4	225.2	13.27	17.966		
2,800.0	2,740.5	2,810.2	2,785.2	11.6	8.2	173.01	286.9	-52.7	244.2	230.4	13.80	17.700		
2,900.0	2,837.8	2,909.9	2,883.3	12.1	8.6	174.43	301.6	-62.6	250.1	235.7	14.33	17.451		
3,000.0	2,935.0	3,009.5	2,981.3	12.6	9.0	175.78	316.3	-72.5	256.1	241.2	14.88	17.218		
3,100.0	3,032.2	3,109.2	3,079.4	13.1	9.4	177.07	331.0	-82.4	262.3	246.9	15.43	16.999		
3,200.0	3,129.5	3,208.8	3,177.4	13.5	9.8	178.29	345.7	-92.4	268.6	252.6	16.00	16.791		
3,300.0	3,226.7	3,308.4	3,275.5	14.0	10.2	179.47	360.3	-102.3	275.0	258.4	16.57	16.595		
3,400.0	3,323.9	3,408.1	3,373.5	14.5	10.6	-179.42	375.0	-112.2	281.5	264.4	17.16	16.409		
3,500.0	3,421.2	3,507.7	3,471.6	15.0	11.0	-178.35	389.7	-122.1	288.2	270.4	17.75	16.232		
3,600.0	3,518.4	3,607.4	3,569.6	15.5	11.4	-177.33	404.4	-132.0	294.9	276.5	18.36	16.063		
3,700.0	3,615.6	3,707.0	3,667.7	16.0	11.8	-176.36	419.1	-142.0	301.7	282.7	18.97	15.903		
3,800.0	3,712.9	3,806.6	3,765.7	16.5	12.1	-175.43	433.8	-151.9	308.6	289.0	19.59	15.750		
3,900.0	3,810.1	3,906.3	3,863.8	17.0	12.5	-174.54	448.5	-161.8	315.6	295.4	20.22	15.605		
4,000.0	3,907.3	4,005.9	3,961.8	17.5	12.9	-173.69	463.2	-171.7	322.6	301.8	20.86	15.466		
4,100.0	4,004.6	4,105.6	4,059.9	17.9	13.3	-172.88	477.8	-181.6	329.8	308.3	21.50	15.334		
4,200.0	4,101.8	4,205.2	4,157.9	18.4	13.7	-172.10	492.5	-191.6	336.9	314.8	22.16	15.208		
4,300.0	4,199.0	4,304.8	4,256.0	18.9	14.1	-171.35	507.2	-201.5	344.2	321.4	22.81	15.088		
4,400.0	4,296.3	4,404.5	4,354.0	19.4	14.5	-170.64	521.9	-211.4	351.5	328.0	23.47	14.973		
4,500.0	4,393.5	4,504.1	4,452.1	19.9	14.9	-169.95	536.6	-221.3	358.8	334.7	24.14	14.863		
4,600.0	4,490.7	4,603.7	4,550.1	20.4	15.3	-169.29	551.3	-231.2	366.2	341.4	24.81	14.759		
4,700.0	4,588.0	4,703.4	4,648.2	20.9	15.7	-168.66	566.0	-241.2	373.7	348.2	25.49	14.659		
4,800.0	4,685.2	4,803.0	4,746.2	21.4	16.1	-168.05	580.7	-251.1	381.1	355.0	26.17	14.563		
4,900.0	4,782.4	4,902.7	4,844.3	21.9	16.5	-167.46	595.3	-261.0	388.7	361.8	26.86	14.472		
5,000.0	4,879.7	5,002.3	4,942.3	22.3	16.9	-166.90	610.0	-270.9	396.2	368.7	27.55	14.385		

CC - Min centre to center distance or convergent point, SF - min separation factor, ES - min ellipse separation

Company:	Synergy Resources	Local Co-ordinate Reference:	Well SRC Union 11HZC
Project:	SEC.5-T2N-R68W	TVD Reference:	WELL @ 4976.0ft (RKB - 13')
Reference Site:	SRC Union Pad Sec.5-T2N-R68W	MD Reference:	WELL @ 4976.0ft (RKB - 13')
Site Error:	0.0ft	North Reference:	True
Reference Well:	SRC Union 11HZC	Survey Calculation Method:	Minimum Curvature
Well Error:	0.0ft	Output errors are at	2.00 sigma
Reference Wellbore	Wellbore #1	Database:	Landmark
Reference Design:	Plan #2 (4-08-13)	Offset TVD Reference:	Offset Datum

Offset Design												Offset Site Error:	0.0 ft
Survey Program: 0-MWD												Offset Well Error:	0.0 ft
Reference		Offset		Semi Major Axis			Distance						Warning
Measured Depth (ft)	Vertical Depth (ft)	Measured Depth (ft)	Vertical Depth (ft)	Reference (ft)	Offset (ft)	Highside Toolface (°)	Offset Wellbore Centre +N/-S (ft)	+E/-W (ft)	Between Centres (ft)	Between Ellipses (ft)	Minimum Separation (ft)	Separation Factor	
5,100.0	4,976.9	5,101.9	5,040.4	22.8	17.3	-166.36	624.7	-280.8	403.8	375.6	28.24	14.301	
5,200.0	5,074.1	5,201.6	5,138.4	23.3	17.7	-165.84	639.4	-290.8	411.5	382.5	28.93	14.221	
5,300.0	5,171.4	5,301.2	5,236.5	23.8	18.1	-165.34	654.1	-300.7	419.2	389.5	29.63	14.145	
5,400.0	5,268.6	5,400.9	5,334.5	24.3	18.5	-164.85	668.8	-310.6	426.9	396.5	30.34	14.071	
5,500.0	5,365.9	5,500.5	5,432.6	24.8	18.9	-164.39	683.5	-320.5	434.4	403.3	31.05	13.991	
5,600.0	5,463.8	5,595.7	5,526.3	25.1	19.2	-163.90	697.3	-329.9	439.5	407.8	31.69	13.865	
5,700.0	5,562.3	5,684.2	5,613.8	25.4	19.5	-163.51	708.3	-337.3	443.4	411.2	32.20	13.769	
5,800.0	5,661.4	5,772.7	5,701.7	25.7	19.7	-163.20	717.1	-343.2	446.5	413.9	32.63	13.684	
5,900.0	5,760.9	5,861.3	5,789.9	25.9	19.9	-162.97	723.6	-347.6	448.9	415.9	32.98	13.609	
6,000.0	5,860.7	5,949.9	5,878.3	26.1	20.1	-162.83	727.8	-350.5	450.4	417.2	33.26	13.545	
6,100.0	5,960.6	6,038.5	5,966.9	26.2	20.2	-162.76	729.8	-351.8	451.2	417.7	33.45	13.488	
6,200.0	6,060.6	6,134.2	6,062.6	26.3	20.3	-178.99	730.0	-351.9	451.3	407.3	43.98	10.262	
6,300.0	6,160.6	6,234.2	6,162.6	26.4	20.5	-178.99	730.0	-351.9	451.3	407.0	44.24	10.201	
6,400.0	6,260.6	6,334.2	6,262.6	26.5	20.6	-178.99	730.0	-351.9	451.3	406.8	44.51	10.139	
6,500.0	6,360.6	6,434.2	6,362.6	26.6	20.8	-178.99	730.0	-351.9	451.3	406.5	44.78	10.078	
6,600.0	6,460.6	6,534.2	6,462.6	26.8	20.9	-178.99	730.0	-351.9	451.3	406.2	45.05	10.017	
6,700.0	6,560.6	6,634.2	6,562.6	26.9	21.1	-178.99	730.0	-351.9	451.3	406.0	45.33	9.956	
6,800.0	6,660.6	6,734.2	6,662.6	27.0	21.2	-178.99	730.0	-351.9	451.3	405.7	45.60	9.895	
6,900.0	6,760.6	6,834.2	6,762.6	27.1	21.4	-178.99	730.0	-351.9	451.3	405.4	45.89	9.835	
6,999.1	6,859.4	6,934.6	6,862.7	27.2	21.5	91.25	730.0	-346.7	451.3	414.8	36.50	12.365	
7,000.0	6,860.4	6,935.3	6,863.4	27.2	21.5	91.00	730.0	-346.6	451.3	414.8	36.44	12.382	
7,100.0	6,957.6	7,036.6	6,961.7	27.2	21.5	90.86	730.0	-322.5	451.3	414.8	36.48	12.372	
7,200.0	7,048.7	7,137.7	7,053.2	27.2	21.4	90.70	730.0	-280.0	451.3	414.9	36.37	12.410	
7,300.0	7,130.3	7,238.5	7,134.7	27.1	21.2	90.51	730.0	-220.8	451.4	415.1	36.28	12.443	
7,400.0	7,199.3	7,339.1	7,203.0	27.1	21.1	90.31	730.0	-147.3	451.4	415.0	36.41	12.398	
7,500.0	7,253.3	7,439.3	7,255.9	27.0	20.9	90.11	730.0	-62.3	451.5	414.5	37.01	12.199	
7,600.0	7,290.3	7,539.3	7,291.4	26.9	20.7	89.90	730.0	31.0	451.6	413.4	38.25	11.807	
7,700.0	7,308.9	7,639.0	7,308.5	26.9	20.6	89.70	730.0	129.0	451.8	411.6	40.15	11.251	
7,800.0	7,310.0	7,736.1	7,310.0	27.0	21.0	89.75	729.8	226.1	452.1	409.4	42.65	10.599	
7,900.0	7,310.0	7,836.1	7,310.0	27.4	22.5	89.75	729.5	326.1	452.6	406.9	45.70	9.905	
8,000.0	7,310.0	7,936.1	7,310.0	28.1	24.3	89.75	729.1	426.1	453.2	404.0	49.18	9.214	
8,100.0	7,310.0	8,036.1	7,310.0	29.3	26.2	89.75	728.7	526.1	453.7	400.7	53.04	8.555	
8,200.0	7,310.0	8,136.1	7,310.0	31.0	28.3	89.75	728.4	626.1	454.3	397.1	57.18	7.945	
8,300.0	7,310.0	8,236.1	7,310.0	32.9	30.5	89.75	728.0	726.1	454.8	393.3	61.56	7.389	
8,400.0	7,310.0	8,336.1	7,310.0	35.0	32.8	89.75	727.6	826.1	455.4	389.3	66.12	6.887	
8,500.0	7,310.0	8,436.1	7,310.0	37.3	35.2	89.75	727.3	926.1	455.9	385.1	70.84	6.436	
8,600.0	7,310.0	8,536.1	7,310.0	39.6	37.6	89.75	726.9	1,026.1	456.5	380.8	75.67	6.032	
8,700.0	7,310.0	8,636.1	7,310.0	42.0	40.1	89.75	726.5	1,126.1	457.0	376.4	80.61	5.670	
8,800.0	7,310.0	8,736.1	7,310.0	44.4	42.6	89.75	726.2	1,226.1	457.6	372.0	85.63	5.344	
8,900.0	7,310.0	8,836.1	7,310.0	46.9	45.1	89.75	725.8	1,326.1	458.1	367.4	90.72	5.050	
9,000.0	7,310.0	8,936.1	7,310.0	49.4	47.7	89.75	725.4	1,426.1	458.7	362.8	95.87	4.785	
9,100.0	7,310.0	9,036.1	7,310.0	52.0	50.3	89.75	725.1	1,526.1	459.2	358.2	101.06	4.544	
9,200.0	7,310.0	9,136.1	7,310.0	54.6	52.9	89.75	724.7	1,626.1	459.8	353.5	106.30	4.325	
9,300.0	7,310.0	9,236.1	7,310.0	57.2	55.5	89.75	724.3	1,726.1	460.3	348.8	111.58	4.126	
9,400.0	7,310.0	9,336.1	7,310.0	59.8	58.2	89.75	724.0	1,826.1	460.9	344.0	116.88	3.943	
9,500.0	7,310.0	9,436.1	7,310.0	62.4	60.9	89.75	723.6	1,926.1	461.4	339.2	122.21	3.776	
9,600.0	7,310.0	9,536.1	7,310.0	65.1	63.5	89.75	723.2	2,026.1	462.0	334.4	127.57	3.621	
9,700.0	7,310.0	9,636.1	7,310.0	67.7	66.2	89.75	722.9	2,126.1	462.5	329.6	132.95	3.479	
9,800.0	7,310.0	9,736.1	7,310.0	70.4	68.9	89.75	722.5	2,226.1	463.1	324.7	138.34	3.347	
9,900.0	7,310.0	9,836.1	7,310.0	73.1	71.6	89.75	722.1	2,326.1	463.6	319.9	143.76	3.225	
10,000.0	7,310.0	9,936.1	7,310.0	75.8	74.3	89.75	721.8	2,426.1	464.2	315.0	149.18	3.112	
10,100.0	7,310.0	10,036.1	7,310.0	78.4	77.0	89.75	721.4	2,526.1	464.7	310.1	154.62	3.006	

CC - Min centre to center distance or convergent point, SF - min separation factor, ES - min ellipse separation

Company:	Synergy Resources	Local Co-ordinate Reference:	Well SRC Union 11HZC
Project:	SEC.5-T2N-R68W	TVD Reference:	WELL @ 4976.0ft (RKB - 13')
Reference Site:	SRC Union Pad Sec.5-T2N-R68W	MD Reference:	WELL @ 4976.0ft (RKB - 13')
Site Error:	0.0ft	North Reference:	True
Reference Well:	SRC Union 11HZC	Survey Calculation Method:	Minimum Curvature
Well Error:	0.0ft	Output errors are at	2.00 sigma
Reference Wellbore	Wellbore #1	Database:	Landmark
Reference Design:	Plan #2 (4-08-13)	Offset TVD Reference:	Offset Datum

Offset Design SRC Union Pad Sec.5-T2N-R68W - SRC Union 5AHZC - Wellbore #1 - Plan #2 (4-08-13)												Offset Site Error:	0.0 ft
Survey Program: 0-MWD												Offset Well Error:	0.0 ft
Reference		Offset		Semi Major Axis			Distance						
Measured Depth (ft)	Vertical Depth (ft)	Measured Depth (ft)	Vertical Depth (ft)	Reference (ft)	Offset (ft)	Highside Toolface (°)	Offset Wellbore Centre +N/-S (ft)	+E/-W (ft)	Between Centres (ft)	Between Ellipses (ft)	Minimum Separation (ft)	Separation Factor	Warning
10,200.0	7,310.0	10,136.0	7,310.0	81.2	79.8	89.75	721.0	2,626.1	465.3	305.2	160.07	2.907	
10,300.0	7,310.0	10,236.0	7,310.0	83.9	82.5	89.75	720.7	2,726.1	465.8	300.3	165.53	2.814	
10,400.0	7,310.0	10,336.0	7,310.0	86.6	85.2	89.75	720.3	2,826.1	466.4	295.4	171.01	2.727	
10,500.0	7,310.0	10,436.0	7,310.0	89.3	88.0	89.75	719.9	2,926.1	466.9	290.5	176.48	2.646	
10,600.0	7,310.0	10,536.0	7,310.0	92.0	90.7	89.75	719.6	3,026.1	467.5	285.5	181.97	2.569	
10,700.0	7,310.0	10,636.0	7,310.0	94.8	93.4	89.76	719.2	3,126.1	468.0	280.6	187.47	2.497	
10,800.0	7,310.0	10,736.0	7,310.0	97.5	96.2	89.76	718.9	3,226.1	468.6	275.6	192.97	2.428	
10,900.0	7,310.0	10,836.0	7,310.0	100.2	98.9	89.76	718.5	3,326.1	469.1	270.7	198.48	2.364	
11,000.0	7,310.0	10,936.0	7,310.0	103.0	101.7	89.76	718.1	3,426.1	469.7	265.7	203.99	2.303	
11,100.0	7,310.0	11,036.0	7,310.0	105.7	104.5	89.76	717.8	3,526.1	470.2	260.7	209.51	2.245	
11,200.0	7,310.0	11,136.0	7,310.0	108.5	107.2	89.76	717.4	3,626.1	470.8	255.8	215.03	2.189	
11,300.0	7,310.0	11,236.0	7,310.0	111.2	110.0	89.76	717.0	3,726.1	471.3	250.8	220.56	2.137	
11,400.0	7,310.0	11,336.0	7,310.0	114.0	112.7	89.76	716.7	3,826.0	471.9	245.8	226.09	2.087	
11,500.0	7,310.0	11,436.0	7,310.0	116.7	115.5	89.76	716.3	3,926.0	472.4	240.8	231.62	2.040	
11,600.0	7,310.0	11,536.0	7,310.0	119.5	118.3	89.76	715.9	4,026.0	473.0	235.8	237.16	1.994	
11,700.0	7,310.0	11,636.0	7,310.0	122.2	121.0	89.76	715.6	4,126.0	473.6	230.8	242.70	1.951	
11,800.0	7,310.0	11,736.0	7,310.0	125.0	123.8	89.76	715.2	4,226.0	474.1	225.9	248.25	1.910	
11,900.0	7,310.0	11,836.0	7,310.0	127.8	126.6	89.76	714.8	4,326.0	474.7	220.9	253.80	1.870	
12,000.0	7,310.0	11,936.0	7,310.0	130.5	129.4	89.76	714.5	4,426.0	475.2	215.9	259.35	1.832	
12,100.0	7,310.0	12,036.0	7,310.0	133.3	132.1	89.76	714.1	4,526.0	475.8	210.9	264.90	1.796	
12,113.6	7,310.0	12,042.5	7,310.0	133.7	132.3	89.76	714.1	4,532.5	475.9	210.4	265.46	1.793 SF	

Offset Design SRC Union Pad Sec.5-T2N-R68W - SRC Union 5AHZN - Wellbore #1 - Plan #2 (4-08-13)													Offset Site Error: 0.0 ft	
Survey Program: 0-MWD													Offset Well Error: 0.0 ft	
Reference		Offset		Semi Major Axis			Distance						Warning	
Measured Depth (ft)	Vertical Depth (ft)	Measured Depth (ft)	Vertical Depth (ft)	Reference (ft)	Offset (ft)	Highside Toolface (°)	Offset Wellbore Centre +N/-S (ft)	+E/-W (ft)	Between Centres (ft)	Between Ellipses (ft)	Minimum Separation (ft)	Separation Factor		
0.0	0.0	2.0	2.0	0.0	0.0	68.91	57.6	149.2	160.0	159.9	0.00	N/A		
100.0	100.0	102.0	102.0	0.1	0.1	68.91	57.6	149.2	160.0	159.7	0.23	697.684		
200.0	200.0	202.0	202.0	0.3	0.3	68.91	57.6	149.2	160.0	159.3	0.68	235.642		
300.0	300.0	302.0	302.0	0.6	0.6	85.77	57.6	149.2	159.8	158.7	1.13	141.695		
400.0	399.8	401.8	401.8	0.8	0.8	87.65	57.6	149.2	159.5	157.9	1.58	100.741		
478.6	478.2	480.2	480.2	1.0	1.0	90.00	57.6	149.2	159.4	157.4	1.96	81.475 CC		
500.0	499.5	501.5	501.5	1.0	1.0	90.77	57.6	149.2	159.4	157.3	2.06	77.458 ES		
600.0	598.7	600.7	600.7	1.3	1.2	95.09	57.6	149.2	160.0	157.5	2.56	62.456		
700.0	697.5	699.5	699.5	1.7	1.5	100.50	57.6	149.2	162.2	159.1	3.10	52.263		
800.0	795.6	797.6	797.6	2.0	1.7	106.76	57.6	149.2	166.8	163.1	3.68	45.331		
900.0	893.1	895.1	895.1	2.5	1.9	113.55	57.6	149.2	174.7	170.4	4.28	40.837		
1,000.0	990.3	992.3	992.3	2.9	2.1	120.05	57.6	149.2	185.4	180.6	4.86	38.132		
1,100.0	1,087.5	1,089.5	1,089.5	3.4	2.3	125.79	57.6	149.2	198.4	193.0	5.42	36.581		
1,200.0	1,184.8	1,186.8	1,186.8	3.8	2.6	130.81	57.6	149.2	213.1	207.2	5.96	35.765		
1,300.0	1,282.0	1,284.0	1,284.0	4.3	2.8	135.17	57.6	149.2	229.3	222.8	6.48	35.415		
1,400.0	1,379.2	1,381.2	1,381.2	4.8	3.0	138.95	57.6	149.2	246.6	239.7	6.98	35.361		
1,500.0	1,476.5	1,478.5	1,478.5	5.3	3.2	142.24	57.6	149.2	264.9	257.4	7.46	35.493		
1,600.0	1,573.7	1,575.7	1,575.7	5.8	3.4	145.10	57.6	149.2	283.9	276.0	7.94	35.737		
1,700.0	1,671.0	1,673.0	1,673.0	6.2	3.6	147.60	57.6	149.2	303.5	295.1	8.42	36.049		
1,800.0	1,768.2	1,770.2	1,770.2	6.7	3.9	149.80	57.6	149.2	323.6	314.7	8.89	36.396		
1,900.0	1,865.4	1,867.4	1,867.4	7.2	4.1	151.75	57.6	149.2	344.2	334.8	9.36	36.760		
2,000.0	1,962.7	1,964.7	1,964.7	7.7	4.3	153.47	57.6	149.2	365.0	355.2	9.83	37.127		
2,100.0	2,059.9	2,061.9	2,061.9	8.2	4.5	155.01	57.6	149.2	386.2	375.9	10.30	37.489		
2,200.0	2,157.1	2,159.1	2,159.1	8.7	4.7	156.40	57.6	149.2	407.6	396.8	10.77	37.841		
2,300.0	2,254.4	2,256.4	2,256.4	9.2	5.0	157.64	57.6	149.2	429.1	417.9	11.24	38.181		
2,400.0	2,351.6	2,353.6	2,353.6	9.6	5.2	158.76	57.6	149.2	450.9	439.2	11.71	38.506		
2,500.0	2,448.8	2,450.8	2,450.8	10.1	5.4	159.79	57.6	149.2	472.8	460.7	12.18	38.816		
2,600.0	2,546.1	2,548.1	2,548.1	10.6	5.6	160.72	57.6	149.2	494.9	482.2	12.65	39.110		
2,700.0	2,643.3	2,645.3	2,645.3	11.1	5.8	161.57	57.6	149.2	517.1	503.9	13.13	39.389		
2,800.0	2,740.5	2,742.5	2,742.5	11.6	6.1	162.35	57.6	149.2	539.3	525.7	13.60	39.653		
2,900.0	2,837.8	2,839.8	2,839.8	12.1	6.3	163.07	57.6	149.2	561.7	547.6	14.08	39.903		
3,000.0	2,935.0	2,937.0	2,937.0	12.6	6.5	163.74	57.6	149.2	584.1	569.6	14.55	40.140		
3,100.0	3,032.2	3,039.6	3,039.6	13.1	6.7	164.41	57.6	149.0	606.5	591.4	15.03	40.343		
3,200.0	3,129.5	3,152.4	3,152.4	13.5	7.0	165.34	58.1	145.2	627.0	611.5	15.51	40.437		
3,300.0	3,226.7	3,265.7	3,265.3	14.0	7.2	166.52	59.3	137.0	645.3	629.3	15.96	40.423		
3,400.0	3,323.9	3,379.0	3,377.9	14.5	7.4	167.94	61.1	124.5	661.4	645.0	16.42	40.284		
3,500.0	3,421.2	3,492.1	3,489.6	15.0	7.7	169.59	63.5	107.5	675.6	658.7	16.88	40.022		
3,600.0	3,518.4	3,594.1	3,590.0	15.5	8.0	171.22	66.1	89.3	688.6	671.2	17.34	39.704		
3,700.0	3,615.6	3,691.4	3,685.7	16.0	8.2	172.73	68.7	71.6	702.0	684.2	17.82	39.393		
3,800.0	3,712.9	3,788.8	3,781.4	16.5	8.5	174.19	71.2	54.0	715.8	697.5	18.32	39.080		
3,900.0	3,810.1	3,886.2	3,877.1	17.0	8.8	175.59	73.7	36.4	730.2	711.3	18.83	38.767		
4,000.0	3,907.3	3,983.5	3,972.9	17.5	9.1	176.94	76.2	18.8	744.9	725.5	19.37	38.454		
4,100.0	4,004.6	4,080.9	4,068.6	17.9	9.4	178.23	78.8	1.2	760.0	740.1	19.93	38.142		
4,200.0	4,101.8	4,178.2	4,164.3	18.4	9.7	179.48	81.3	-16.4	775.6	755.1	20.50	37.831		
4,300.0	4,199.0	4,275.6	4,260.0	18.9	10.0	-179.32	83.8	-34.0	791.4	770.3	21.09	37.525		
4,400.0	4,296.3	4,373.0	4,355.7	19.4	10.3	-178.17	86.3	-51.6	807.6	785.9	21.70	37.222		
4,500.0	4,393.5	4,470.3	4,451.5	19.9	10.6	-177.06	88.8	-69.2	824.2	801.8	22.32	36.925		
4,600.0	4,490.7	4,567.7	4,547.2	20.4	11.0	-176.00	91.4	-86.8	841.0	818.0	22.96	36.634		
4,700.0	4,588.0	4,665.0	4,642.9	20.9	11.3	-174.97	93.9	-104.5	858.1	834.5	23.61	36.351		
4,800.0	4,685.2	4,762.4	4,738.6	21.4	11.7	-173.99	96.4	-122.1	875.4	851.2	24.27	36.075		
4,900.0	4,782.4	4,859.7	4,834.3	21.9	12.0	-173.04	98.9	-139.7	893.0	868.1	24.94	35.807		
5,000.0	4,879.7	4,957.1	4,930.1	22.3	12.4	-172.13	101.4	-157.3	910.9	885.2	25.62	35.548		

Company:	Synergy Resources	Local Co-ordinate Reference:	Well SRC Union 11HZC
Project:	SEC.5-T2N-R68W	TVD Reference:	WELL @ 4976.0ft (RKB - 13')
Reference Site:	SRC Union Pad Sec.5-T2N-R68W	MD Reference:	WELL @ 4976.0ft (RKB - 13')
Site Error:	0.0ft	North Reference:	True
Reference Well:	SRC Union 11HZC	Survey Calculation Method:	Minimum Curvature
Well Error:	0.0ft	Output errors are at	2.00 sigma
Reference Wellbore	Wellbore #1	Database:	Landmark
Reference Design:	Plan #2 (4-08-13)	Offset TVD Reference:	Offset Datum

Offset Design SRC Union Pad Sec.5-T2N-R68W - SRC Union 5AHZN - Wellbore #1 - Plan #2 (4-08-13)												Offset Site Error:	0.0 ft
Survey Program: 0-MWD												Offset Well Error:	0.0 ft
Reference	Offset	Semi Major Axis			Distance								Warning
Measured Depth (ft)	Vertical Depth (ft)	Measured Depth (ft)	Vertical Depth (ft)	Reference (ft)	Offset (ft)	Highside Toolface (°)	Offset Wellbore Centre +N/-S (ft)	+E/-W (ft)	Between Centres (ft)	Between Ellipses (ft)	Minimum Separation (ft)	Separation Factor	
5,100.0	4,976.9	5,054.5	5,025.8	22.8	12.7	-171.26	104.0	-174.9	928.9	902.6	26.32	35.298	
5,200.0	5,074.1	5,151.8	5,121.5	23.3	13.1	-170.41	106.5	-192.5	947.2	920.2	27.02	35.057	
5,300.0	5,171.4	5,249.2	5,217.2	23.8	13.4	-169.60	109.0	-210.1	965.6	937.9	27.73	34.824	
5,400.0	5,268.6	5,346.5	5,312.9	24.3	13.8	-168.82	111.5	-227.7	984.3	955.8	28.45	34.601 SF	

Company:	Synergy Resources	Local Co-ordinate Reference:	Well SRC Union 11H2C
Project:	SEC.5-T2N-R68W	TVD Reference:	WELL @ 4976.0ft (RKB - 13')
Reference Site:	SRC Union Pad Sec.5-T2N-R68W	MD Reference:	WELL @ 4976.0ft (RKB - 13')
Site Error:	0.0ft	North Reference:	True
Reference Well:	SRC Union 11H2C	Survey Calculation Method:	Minimum Curvature
Well Error:	0.0ft	Output errors are at	2.00 sigma
Reference Wellbore	Wellbore #1	Database:	Landmark
Reference Design:	Plan #2 (4-08-13)	Offset TVD Reference:	Offset Datum

Offset Design													Offset Site Error:	0.0 ft
Survey Program: 0-MWD													Offset Well Error:	0.0 ft
Reference		Offset		Semi Major Axis			Distance							Warning
Measured Depth (ft)	Vertical Depth (ft)	Measured Depth (ft)	Vertical Depth (ft)	Reference (ft)	Offset (ft)	Highside Toolface (°)	Offset Wellbore Centre +N/-S (ft)	+E/-W (ft)	Between Centres (ft)	Between Ellipses (ft)	Minimum Separation (ft)	Separation Factor		
0.0	0.0	0.0	0.0	0.0	0.0	-111.25	-7.3	-18.7	20.1					
100.0	100.0	100.0	100.0	0.1	0.1	-111.25	-7.3	-18.7	20.1	19.9	0.22	89.384		
200.0	200.0	200.0	200.0	0.3	0.3	-111.25	-7.3	-18.7	20.1	19.4	0.67	29.795 CC		
300.0	300.0	300.0	300.0	0.6	0.6	-99.92	-7.3	-18.7	20.3	19.2	1.12	18.082 ES		
400.0	399.8	399.8	399.8	0.8	0.8	-113.53	-7.3	-18.7	21.8	20.3	1.58	13.803		
500.0	499.5	499.5	499.5	1.0	1.0	-130.93	-7.3	-18.7	26.6	24.5	2.06	12.912 SF		
600.0	598.7	598.7	598.7	1.3	1.2	-145.71	-7.3	-18.7	35.8	33.2	2.53	14.112		
700.0	697.5	697.5	697.5	1.7	1.5	-155.83	-7.3	-18.7	49.5	46.5	3.01	16.471		
800.0	795.6	795.6	795.6	2.0	1.7	-162.36	-7.3	-18.7	67.4	63.9	3.47	19.408		
900.0	893.1	893.1	893.1	2.5	1.9	-166.65	-7.3	-18.7	89.0	85.1	3.94	22.606		
1,000.0	990.3	990.3	990.3	2.9	2.1	-169.41	-7.3	-18.7	111.9	107.5	4.41	25.401		
1,100.0	1,087.5	1,090.5	1,090.5	3.4	2.3	-171.10	-6.3	-19.3	134.0	129.1	4.88	27.463		
1,200.0	1,184.8	1,192.1	1,192.0	3.8	2.6	-171.96	-3.1	-21.1	153.8	148.4	5.36	28.702		
1,300.0	1,282.0	1,294.6	1,294.3	4.3	2.8	-172.30	2.6	-24.3	171.1	165.2	5.85	29.261		
1,400.0	1,379.2	1,394.6	1,393.9	4.8	3.0	-172.36	9.8	-28.4	186.6	180.3	6.34	29.428		
1,500.0	1,476.5	1,493.4	1,492.4	5.3	3.3	-172.39	17.1	-32.5	202.0	195.2	6.84	29.531		
1,600.0	1,573.7	1,592.2	1,590.8	5.8	3.5	-172.42	24.3	-36.6	217.5	210.1	7.34	29.611		
1,700.0	1,671.0	1,691.0	1,689.3	6.2	3.8	-172.45	31.5	-40.7	232.9	225.1	7.85	29.672		
1,800.0	1,768.2	1,789.8	1,787.7	6.7	4.0	-172.47	38.7	-44.8	248.4	240.0	8.36	29.721		
1,900.0	1,865.4	1,888.6	1,886.2	7.2	4.3	-172.49	46.0	-48.8	263.8	254.9	8.86	29.761		
2,000.0	1,962.7	1,987.4	1,984.6	7.7	4.5	-172.51	53.2	-52.9	279.2	269.9	9.37	29.791		
2,100.0	2,059.9	2,086.2	2,083.1	8.2	4.8	-172.53	60.4	-57.0	294.7	284.8	9.88	29.816		
2,200.0	2,157.1	2,185.0	2,181.5	8.7	5.0	-172.54	67.7	-61.1	310.1	299.7	10.39	29.836		
2,300.0	2,254.4	2,283.8	2,280.0	9.2	5.3	-172.56	74.9	-65.2	325.6	314.7	10.91	29.853		
2,400.0	2,351.6	2,382.6	2,378.4	9.6	5.5	-172.57	82.1	-69.3	341.0	329.6	11.42	29.866		
2,500.0	2,448.8	2,481.4	2,476.9	10.1	5.8	-172.58	89.3	-73.4	356.4	344.5	11.93	29.877		
2,600.0	2,546.1	2,580.2	2,575.3	10.6	6.0	-172.59	96.6	-77.5	371.9	359.4	12.44	29.886		
2,700.0	2,643.3	2,679.0	2,673.8	11.1	6.3	-172.60	103.8	-81.6	387.3	374.4	12.96	29.893		
2,800.0	2,740.5	2,777.8	2,772.2	11.6	6.6	-172.61	111.0	-85.6	402.8	389.3	13.47	29.899		
2,900.0	2,837.8	2,876.6	2,870.7	12.1	6.8	-172.62	118.3	-89.7	418.2	404.2	13.99	29.904		
3,000.0	2,935.0	2,975.4	2,969.1	12.6	7.1	-172.63	125.5	-93.8	433.6	419.1	14.50	29.907		
3,100.0	3,032.2	3,074.2	3,067.6	13.1	7.4	-172.63	132.7	-97.9	449.1	434.1	15.01	29.910		
3,200.0	3,129.5	3,173.0	3,166.0	13.5	7.6	-172.64	139.9	-102.0	464.5	449.0	15.53	29.913		
3,300.0	3,226.7	3,271.8	3,264.5	14.0	7.9	-172.65	147.2	-106.1	480.0	463.9	16.04	29.914		
3,400.0	3,323.9	3,370.6	3,362.9	14.5	8.1	-172.65	154.4	-110.2	495.4	478.8	16.56	29.916		
3,500.0	3,421.2	3,469.4	3,461.4	15.0	8.4	-172.66	161.6	-114.3	510.8	493.8	17.08	29.916		
3,600.0	3,518.4	3,568.2	3,559.8	15.5	8.7	-172.66	168.9	-118.4	526.3	508.7	17.59	29.917		
3,700.0	3,615.6	3,667.0	3,658.3	16.0	8.9	-172.67	176.1	-122.4	541.7	523.6	18.11	29.917		
3,800.0	3,712.9	3,765.8	3,756.7	16.5	9.2	-172.67	183.3	-126.5	557.2	538.5	18.62	29.917		
3,900.0	3,810.1	3,864.6	3,855.2	17.0	9.5	-172.67	190.5	-130.6	572.6	553.5	19.14	29.917		
4,000.0	3,907.3	3,963.4	3,953.6	17.5	9.7	-172.68	197.8	-134.7	588.0	568.4	19.66	29.916		
4,100.0	4,004.6	4,062.2	4,052.1	17.9	10.0	-172.68	205.0	-138.8	603.5	583.3	20.17	29.916		
4,200.0	4,101.8	4,161.0	4,150.5	18.4	10.3	-172.69	212.2	-142.9	618.9	598.2	20.69	29.915		
4,300.0	4,199.0	4,259.8	4,249.0	18.9	10.5	-172.69	219.5	-147.0	634.4	613.2	21.21	29.914		
4,400.0	4,296.3	4,358.6	4,347.4	19.4	10.8	-172.69	226.7	-151.1	649.8	628.1	21.72	29.913		
4,500.0	4,393.5	4,457.4	4,445.9	19.9	11.1	-172.70	233.9	-155.1	665.3	643.0	22.24	29.912		
4,600.0	4,490.7	4,556.2	4,544.4	20.4	11.3	-172.70	241.1	-159.2	680.7	657.9	22.76	29.911		
4,700.0	4,588.0	4,655.0	4,642.8	20.9	11.6	-172.70	248.4	-163.3	696.1	672.9	23.27	29.910		
4,800.0	4,685.2	4,753.8	4,741.3	21.4	11.9	-172.71	255.6	-167.4	711.6	687.8	23.79	29.909		
4,900.0	4,782.4	4,852.6	4,839.7	21.9	12.1	-172.71	262.8	-171.5	727.0	702.7	24.31	29.907		
5,000.0	4,879.7	4,951.4	4,938.2	22.3	12.4	-172.71	270.0	-175.6	742.5	717.6	24.83	29.906		
5,100.0	4,976.9	5,050.2	5,036.6	22.8	12.7	-172.71	277.3	-179.7	757.9	732.6	25.34	29.905		

CC - Min centre to center distance or convergent point, SF - min separation factor, ES - min ellipse separation

SRC Union Pad Sec.5-T2N-R68W - SRC Union 5FD - Wellbore #1 - Plan #1 (1-03-13)													Offset Site Error:	0.0 ft
Survey Program: 0-MWD													Offset Well Error:	0.0 ft
Reference		Offset		Semi Major Axis			Distance							Warning
Measured Depth (ft)	Vertical Depth (ft)	Measured Depth (ft)	Vertical Depth (ft)	Reference (ft)	Offset (ft)	Highside Toolface (°)	Offset Wellbore Centre +N/-S (ft)	+E/-W (ft)	Between Centres (ft)	Between Ellipses (ft)	Minimum Separation (ft)	Separation Factor		
5,200.0	5,074.1	5,149.0	5,135.1	23.3	12.9	-172.71	284.5	-183.8	773.3	747.5	25.86	29.903		
5,300.0	5,171.4	5,247.8	5,233.5	23.8	13.2	-172.72	291.7	-187.9	788.8	762.4	26.38	29.902		
5,400.0	5,268.6	5,346.6	5,332.0	24.3	13.5	-172.72	299.0	-191.9	804.2	777.3	26.90	29.900		
5,500.0	5,365.9	5,445.4	5,430.4	24.8	13.7	-172.73	306.2	-196.0	819.4	792.0	27.43	29.878		
5,600.0	5,463.8	5,544.6	5,529.3	25.1	14.0	-172.74	313.4	-200.1	831.9	804.0	27.93	29.787		
5,700.0	5,562.3	5,644.2	5,628.5	25.4	14.3	-172.71	320.7	-204.3	841.0	812.6	28.40	29.617		
5,800.0	5,661.4	5,744.0	5,728.0	25.7	14.5	-172.64	328.0	-208.4	846.6	817.8	28.82	29.370		
5,900.0	5,760.9	5,844.0	5,827.6	25.9	14.8	-172.53	335.4	-212.5	848.7	819.5	29.22	29.050		
6,000.0	5,860.7	5,944.0	5,927.2	26.1	15.1	-172.39	342.7	-216.7	847.4	817.8	29.57	28.660		
6,100.0	5,960.6	6,043.8	6,026.7	26.2	15.3	-172.20	350.0	-220.8	842.6	812.8	29.88	28.200		
6,200.0	6,060.6	6,143.5	6,126.0	26.3	15.6	171.78	357.3	-224.9	835.1	793.6	41.46	20.140		
6,300.0	6,160.6	6,243.1	6,225.3	26.4	15.9	171.99	364.6	-229.0	827.2	785.4	41.82	19.780		
6,400.0	6,260.6	6,342.8	6,324.6	26.5	16.1	172.20	371.8	-233.2	819.4	777.2	42.18	19.427		
6,500.0	6,360.6	6,442.4	6,423.9	26.6	16.4	172.42	379.1	-237.3	811.6	769.1	42.54	19.080		
6,600.0	6,460.6	6,542.1	6,523.2	26.8	16.7	172.65	386.4	-241.4	803.8	760.9	42.90	18.738		
6,700.0	6,560.6	6,641.7	6,622.5	26.9	17.0	172.87	393.7	-245.5	796.0	752.8	43.26	18.402		
6,800.0	6,660.6	6,741.4	6,721.8	27.0	17.2	173.11	401.0	-249.7	788.3	744.6	43.62	18.072		
6,900.0	6,760.6	6,841.0	6,821.1	27.1	17.5	173.34	408.3	-253.8	780.5	736.5	43.98	17.747		
7,000.0	6,860.4	6,940.2	6,920.0	27.2	17.8	84.64	415.6	-257.9	772.3	738.4	33.84	22.823		
7,100.0	6,957.6	7,036.2	7,015.6	27.2	18.0	87.55	422.6	-261.9	762.8	728.3	34.51	22.108		
7,200.0	7,048.7	7,125.2	7,104.3	27.2	18.3	91.49	429.1	-265.5	754.3	719.0	35.31	21.364		
7,300.0	7,130.3	7,204.1	7,183.0	27.1	18.5	95.62	434.9	-268.8	750.1	714.0	36.03	20.820		
7,310.0	7,137.8	7,211.4	7,190.1	27.1	18.5	96.01	435.4	-269.1	750.0	713.9	36.09	20.782		
7,400.0	7,199.3	7,270.0	7,248.6	27.1	18.7	98.96	439.7	-271.5	753.9	717.4	36.47	20.670		
7,500.0	7,253.3	7,320.3	7,298.7	27.0	18.8	100.56	443.4	-273.6	769.2	732.5	36.77	20.920		
7,600.0	7,290.3	7,353.4	7,331.6	26.9	18.9	99.67	445.8	-275.0	797.9	760.6	37.27	21.406		
7,700.0	7,308.9	7,367.8	7,346.0	26.9	18.9	95.73	446.8	-275.6	839.7	801.5	38.15	22.007		
7,800.0	7,310.0	7,364.8	7,343.1	27.0	18.9	92.58	446.6	-275.5	891.6	852.3	39.30	22.690		
7,900.0	7,310.0	7,360.7	7,339.0	27.4	18.9	92.26	446.3	-275.3	951.8	911.0	40.81	23.321		

SRC Union Pad Sec.5-T2N-R68W - SRC Union 5JD - Wellbore #1 - Plan #1 (1-03-13)													Offset Site Error:	0.0 ft
Survey Program: 0-MWD													Offset Well Error:	0.0 ft
Reference		Offset		Semi Major Axis			Distance							
Measured Depth	Vertical Depth	Measured Depth	Vertical Depth	Reference	Offset	Highside Toolface	Offset Wellbore Centre		Between Centres	Between Ellipses	Minimum Separation	Separation Factor	Warning	
(ft)	(ft)	(ft)	(ft)	(ft)	(ft)	(°)	+N/-S (ft)	+E/-W (ft)	(ft)	(ft)	(ft)			
0.0	0.0	1.0	1.0	0.0	0.0	69.15	28.4	74.6	79.8	79.8	0.00	N/A		
100.0	100.0	101.0	101.0	0.1	0.1	69.15	28.4	74.6	79.8	79.6	0.23	351.725		
166.3	166.3	167.3	167.3	0.3	0.3	69.15	28.4	74.6	79.8	79.3	0.53	152.034	CC	
200.0	200.0	201.0	201.0	0.3	0.3	69.15	28.4	74.6	79.8	79.2	0.68	118.030	ES	
300.0	300.0	300.0	300.0	0.6	0.6	86.02	29.6	75.3	80.7	79.6	1.12	71.945		
400.0	399.8	397.7	397.6	0.8	0.8	87.81	32.8	77.2	83.4	81.8	1.58	52.950		
500.0	499.5	495.9	495.6	1.0	1.0	90.56	38.3	80.4	88.0	86.0	2.06	42.819		
600.0	598.7	593.9	593.2	1.3	1.3	93.94	46.0	84.8	94.8	92.2	2.58	36.757		
700.0	697.5	691.6	690.2	1.7	1.5	97.60	55.7	90.5	103.9	100.8	3.16	32.892		
800.0	795.6	789.0	786.6	2.0	1.8	101.23	67.6	97.4	115.6	111.8	3.81	30.348		
900.0	893.1	886.0	882.3	2.5	2.2	104.67	81.5	105.5	129.8	125.3	4.53	28.656		
1,000.0	990.3	982.8	977.3	2.9	2.5	107.09	97.5	114.8	145.9	140.6	5.30	27.527		
1,100.0	1,087.5	1,079.4	1,071.6	3.4	2.9	108.26	115.5	125.3	163.4	157.3	6.11	26.727		
1,200.0	1,184.8	1,175.7	1,165.1	3.8	3.4	108.49	135.5	137.0	182.0	175.0	6.96	26.132		
1,300.0	1,282.0	1,271.7	1,257.7	4.3	3.9	108.06	157.5	149.8	201.7	193.9	7.85	25.693		
1,400.0	1,379.2	1,369.6	1,351.9	4.8	4.4	107.46	180.8	163.3	221.9	213.2	8.77	25.310		
1,500.0	1,476.5	1,467.5	1,446.0	5.3	4.9	106.96	204.0	176.8	242.1	232.5	9.69	24.980		
1,600.0	1,573.7	1,565.5	1,540.1	5.8	5.4	106.54	227.3	190.4	262.4	251.8	10.62	24.697		
1,700.0	1,671.0	1,663.4	1,634.3	6.2	6.0	106.17	250.5	203.9	282.6	271.1	11.56	24.451		
1,800.0	1,768.2	1,761.3	1,728.4	6.7	6.5	105.86	273.8	217.4	302.9	290.4	12.50	24.235		
1,900.0	1,865.4	1,859.2	1,822.6	7.2	7.0	105.58	297.0	231.0	323.2	309.7	13.44	24.046		
2,000.0	1,962.7	1,957.1	1,916.7	7.7	7.6	105.34	320.3	244.5	343.4	329.1	14.38	23.878		
2,100.0	2,059.9	2,055.0	2,010.9	8.2	8.1	105.12	343.6	258.1	363.7	348.4	15.33	23.729		
2,200.0	2,157.1	2,152.9	2,105.0	8.7	8.6	104.93	366.8	271.6	384.0	367.7	16.27	23.595		
2,300.0	2,254.4	2,250.9	2,199.1	9.2	9.2	104.76	390.1	285.1	404.3	387.1	17.22	23.475		
2,400.0	2,351.6	2,348.8	2,293.3	9.6	9.7	104.60	413.3	298.7	424.6	406.4	18.17	23.366		
2,500.0	2,448.8	2,446.7	2,387.4	10.1	10.3	104.46	436.6	312.2	444.9	425.8	19.12	23.267		
2,600.0	2,546.1	2,544.6	2,481.6	10.6	10.8	104.33	459.8	325.7	465.2	445.1	20.07	23.177		
2,700.0	2,643.3	2,642.5	2,575.7	11.1	11.4	104.21	483.1	339.3	485.5	464.5	21.02	23.095		
2,800.0	2,740.5	2,740.4	2,669.9	11.6	11.9	104.10	506.4	352.8	505.8	483.8	21.97	23.019		
2,900.0	2,837.8	2,838.3	2,764.0	12.1	12.4	104.00	529.6	366.4	526.1	503.2	22.92	22.949		
3,000.0	2,935.0	2,936.2	2,858.1	12.6	13.0	103.90	552.9	379.9	546.4	522.5	23.88	22.885		
3,100.0	3,032.2	3,034.2	2,952.3	13.1	13.5	103.82	576.1	393.4	566.7	541.9	24.83	22.825		
3,200.0	3,129.5	3,132.1	3,046.4	13.5	14.1	103.73	599.4	407.0	587.0	561.2	25.78	22.769		
3,300.0	3,226.7	3,230.0	3,140.6	14.0	14.6	103.66	622.6	420.5	607.3	580.6	26.73	22.718		
3,400.0	3,323.9	3,327.9	3,234.7	14.5	15.2	103.59	645.9	434.1	627.6	599.9	27.69	22.669		
3,500.0	3,421.2	3,425.8	3,328.9	15.0	15.7	103.52	669.2	447.6	647.9	619.3	28.64	22.624		
3,600.0	3,518.4	3,523.7	3,423.0	15.5	16.3	103.46	692.4	461.1	668.2	638.6	29.59	22.581		
3,700.0	3,615.6	3,621.6	3,517.1	16.0	16.8	103.40	715.7	474.7	688.6	658.0	30.55	22.541		
3,800.0	3,712.9	3,719.6	3,611.3	16.5	17.4	103.35	738.9	488.2	708.9	677.4	31.50	22.504		
3,900.0	3,810.1	3,817.5	3,705.4	17.0	17.9	103.29	762.2	501.7	729.2	696.7	32.45	22.468		
4,000.0	3,907.3	3,915.4	3,799.6	17.5	18.4	103.24	785.4	515.3	749.5	716.1	33.41	22.434		
4,100.0	4,004.6	4,013.3	3,893.7	17.9	19.0	103.20	808.7	528.8	769.8	735.4	34.36	22.403		
4,200.0	4,101.8	4,111.2	3,987.9	18.4	19.5	103.15	832.0	542.4	790.1	754.8	35.32	22.373		
4,300.0	4,199.0	4,209.1	4,082.0	18.9	20.1	103.11	855.2	555.9	810.4	774.2	36.27	22.344		
4,400.0	4,296.3	4,307.0	4,176.1	19.4	20.6	103.07	878.5	569.4	830.7	793.5	37.23	22.317		
4,500.0	4,393.5	4,404.9	4,270.3	19.9	21.2	103.03	901.7	583.0	851.1	812.9	38.18	22.291		
4,600.0	4,490.7	4,502.9	4,364.4	20.4	21.7	103.00	925.0	596.5	871.4	832.2	39.13	22.266		
4,700.0	4,588.0	4,600.8	4,458.6	20.9	22.3	102.96	948.2	610.0	891.7	851.6	40.09	22.243		
4,800.0	4,685.2	4,698.7	4,552.7	21.4	22.8	102.93	971.5	623.6	912.0	871.0	41.04	22.220		
4,900.0	4,782.4	4,796.6	4,646.8	21.9	23.4	102.90	994.8	637.1	932.3	890.3	42.00	22.199		
5,000.0	4,879.7	4,894.5	4,741.0	22.3	23.9	102.87	1,018.0	650.7	952.6	909.7	42.95	22.178		

Company:	Synergy Resources	Local Co-ordinate Reference:	Well SRC Union 11HZC
Project:	SEC.5-T2N-R68W	TVD Reference:	WELL @ 4976.0ft (RKB - 13')
Reference Site:	SRC Union Pad Sec.5-T2N-R68W	MD Reference:	WELL @ 4976.0ft (RKB - 13')
Site Error:	0.0ft	North Reference:	True
Reference Well:	SRC Union 11HZC	Survey Calculation Method:	Minimum Curvature
Well Error:	0.0ft	Output errors are at	2.00 sigma
Reference Wellbore	Wellbore #1	Database:	Landmark
Reference Design:	Plan #2 (4-08-13)	Offset TVD Reference:	Offset Datum

Offset Design												Offset Site Error:	0.0 ft
Survey Program: 0-MWD												Offset Well Error:	0.0 ft
Reference		Offset		Semi Major Axis			Distance						
Measured Depth (ft)	Vertical Depth (ft)	Measured Depth (ft)	Vertical Depth (ft)	Reference (ft)	Offset (ft)	Highside Toolface (°)	Offset Wellbore Centre +N/-S (ft)	+E/-W (ft)	Between Centres (ft)	Between Ellipses (ft)	Minimum Separation (ft)	Separation Factor	Warning
5,100.0	4,976.9	4,992.4	4,835.1	22.8	24.5	102.84	1,041.3	664.2	973.0	929.1	43.91	22.159	
5,200.0	5,074.1	5,090.3	4,929.3	23.3	25.0	102.81	1,064.5	677.7	993.3	948.4	44.86	22.140	
7,700.0	7,308.9	7,331.2	7,083.8	26.9	37.6	-53.80	1,596.8	987.6	980.2	938.2	41.94	23.370	
7,800.0	7,310.0	7,346.0	7,098.1	27.0	37.6	-62.95	1,600.3	989.6	894.9	848.6	46.28	19.338	
7,900.0	7,310.0	7,359.9	7,111.4	27.4	37.7	-64.60	1,603.6	991.5	811.2	763.1	48.09	16.870	
8,000.0	7,310.0	7,373.7	7,124.8	28.1	37.8	-66.27	1,606.9	993.4	731.4	681.3	50.09	14.601	
8,100.0	7,310.0	7,387.6	7,138.1	29.3	37.9	-67.95	1,610.2	995.4	656.9	604.6	52.26	12.570	
8,200.0	7,310.0	7,401.5	7,151.4	31.0	38.0	-69.65	1,613.5	997.3	589.6	535.0	54.56	10.806	
8,300.0	7,310.0	7,415.4	7,164.8	32.9	38.0	-71.36	1,616.8	999.2	532.3	475.4	56.97	9.344	
8,400.0	7,310.0	7,429.2	7,178.1	35.0	38.1	-73.08	1,620.1	1,001.1	488.6	429.1	59.47	8.216	
8,500.0	7,310.0	7,443.1	7,191.4	37.3	38.2	-74.80	1,623.4	1,003.0	462.3	400.3	62.03	7.453	
8,577.6	7,310.0	7,453.9	7,201.8	39.1	38.2	-76.14	1,625.9	1,004.5	455.9	391.8	64.06	7.116	
8,600.0	7,310.0	7,457.0	7,204.8	39.6	38.3	-76.53	1,626.7	1,005.0	456.4	391.8	64.64	7.060	
8,700.0	7,310.0	7,470.8	7,218.1	42.0	38.3	-78.25	1,630.0	1,006.9	471.7	404.4	67.29	7.011 SF	
8,800.0	7,310.0	7,484.7	7,231.4	44.4	38.4	-79.97	1,633.3	1,008.8	506.3	436.4	69.95	7.238	
8,900.0	7,310.0	7,498.6	7,244.8	46.9	38.5	-81.69	1,636.6	1,010.7	556.6	484.0	72.62	7.664	
9,000.0	7,310.0	7,512.4	7,258.1	49.4	38.6	-83.39	1,639.9	1,012.6	618.7	543.5	75.28	8.219	
9,100.0	7,310.0	7,526.3	7,271.4	52.0	38.7	-85.08	1,643.1	1,014.5	689.6	611.6	77.93	8.849	
9,200.0	7,310.0	7,540.2	7,284.8	54.6	38.7	-86.76	1,646.4	1,016.5	766.7	686.1	80.55	9.518	
9,300.0	7,310.0	7,554.1	7,298.1	57.2	38.8	-88.42	1,649.7	1,018.4	848.4	765.2	83.14	10.204	
9,400.0	7,310.0	7,567.9	7,311.5	59.8	38.9	-90.06	1,653.0	1,020.3	933.4	847.7	85.69	10.892	

Company:	Synergy Resources	Local Co-ordinate Reference:	Well SRC Union 11HZC
Project:	SEC.5-T2N-R68W	TVD Reference:	WELL @ 4976.0ft (RKB - 13')
Reference Site:	SRC Union Pad Sec.5-T2N-R68W	MD Reference:	WELL @ 4976.0ft (RKB - 13')
Site Error:	0.0ft	North Reference:	True
Reference Well:	SRC Union 11HZC	Survey Calculation Method:	Minimum Curvature
Well Error:	0.0ft	Output errors are at	2.00 sigma
Reference Wellbore	Wellbore #1	Database:	Landmark
Reference Design:	Plan #2 (4-08-13)	Offset TVD Reference:	Offset Datum

Reference Depths are relative to WELL @ 4976.0ft (RKB - 13')

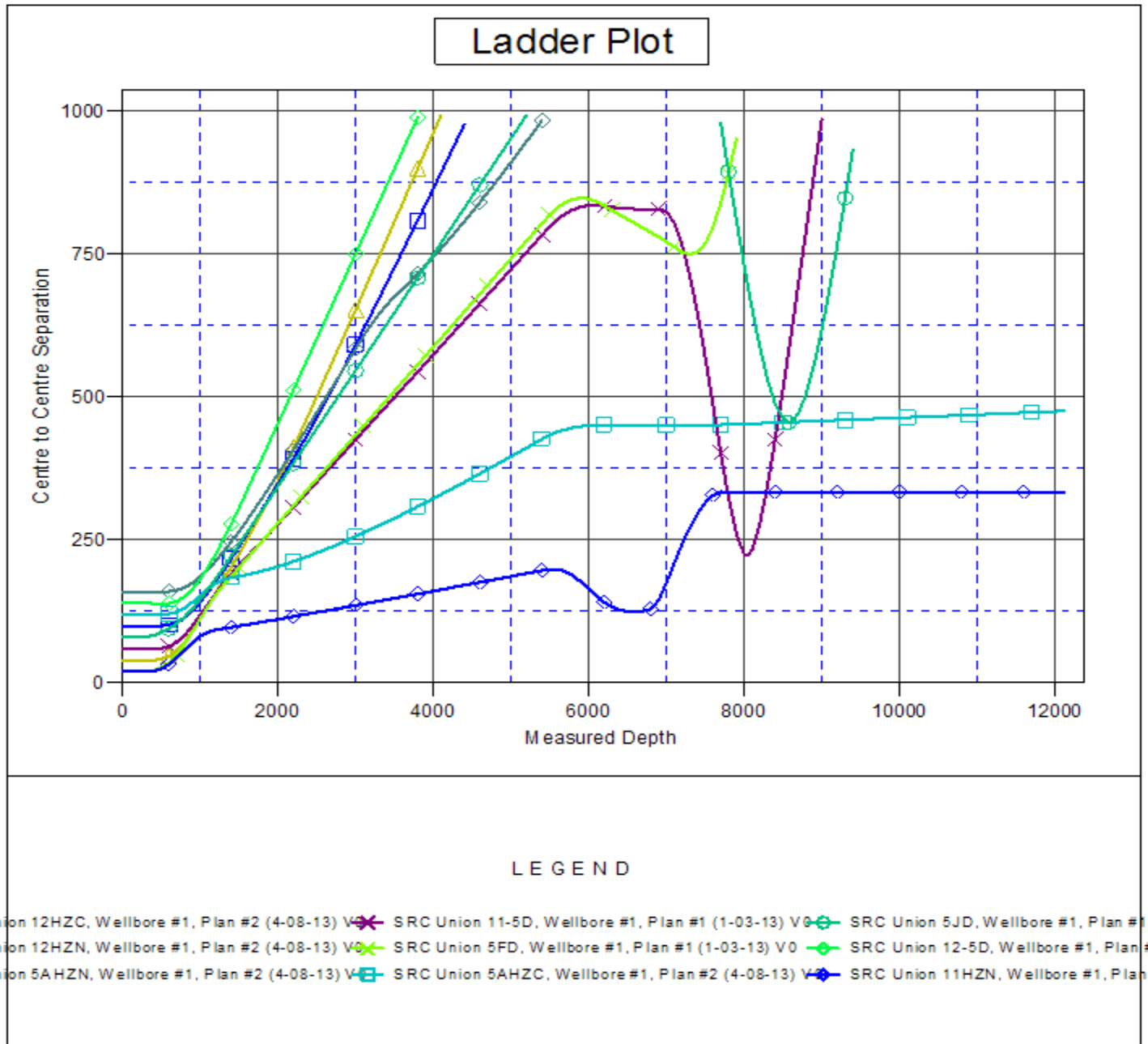
Offset Depths are relative to Offset Datum

Central Meridian is -105.500000 °

Coordinates are relative to: SRC Union 11HZC

Coordinate System is US State Plane 1983, Colorado Northern Zone

Grid Convergence at Surface is: 0.30°



Company:	Synergy Resources	Local Co-ordinate Reference:	Well SRC Union 11HZC
Project:	SEC.5-T2N-R68W	TVD Reference:	WELL @ 4976.0ft (RKB - 13')
Reference Site:	SRC Union Pad Sec.5-T2N-R68W	MD Reference:	WELL @ 4976.0ft (RKB - 13')
Site Error:	0.0ft	North Reference:	True
Reference Well:	SRC Union 11HZC	Survey Calculation Method:	Minimum Curvature
Well Error:	0.0ft	Output errors are at	2.00 sigma
Reference Wellbore	Wellbore #1	Database:	Landmark
Reference Design:	Plan #2 (4-08-13)	Offset TVD Reference:	Offset Datum

Reference Depths are relative to WELL @ 4976.0ft (RKB - 13')

Offset Depths are relative to Offset Datum

Central Meridian is -105.500000 °

Coordinates are relative to: SRC Union 11HZC

Coordinate System is US State Plane 1983, Colorado Northern Zone

Grid Convergence at Surface is: 0.30°

