

# Synergy Resources

## Well Name: SRC Union 12HZN

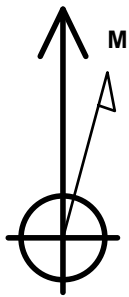
Surface Location: SRC Union Pad Sec.5-T2N-R68W  
North American Datum 1983 , US State Plane 1983 , Colorado Northern Zone

Ground Elevation: 4965.0

+N/-S	+E/-W	Northing	Easting	Latitude	Longitude	Slot
0.0	0.0	1305205.95	3129982.22	40.170250	-105.034869	
RKB - 13' WELL @ 4978.0ft (RKB - 13')						

## WELLBORE TARGET DETAILS

Name	TVD	+N/-S	+E/-W	Shape
HARDLINES BHL 460'FEL	1.0	-978.1	4428.1	Polygon
HARDLINES SHL 460'FWL	1.0	-978.1	16.9	Polygon
BHL 1951'FNL, 460'FEL	7000.0	-271.4	4421.5	Point
Landing Pt 1883'FNL & 510'FWL	7000.0	-233.5	64.0	Point
T1 - SRC Union 12HZN	7000.0	-233.5	214.1	Point



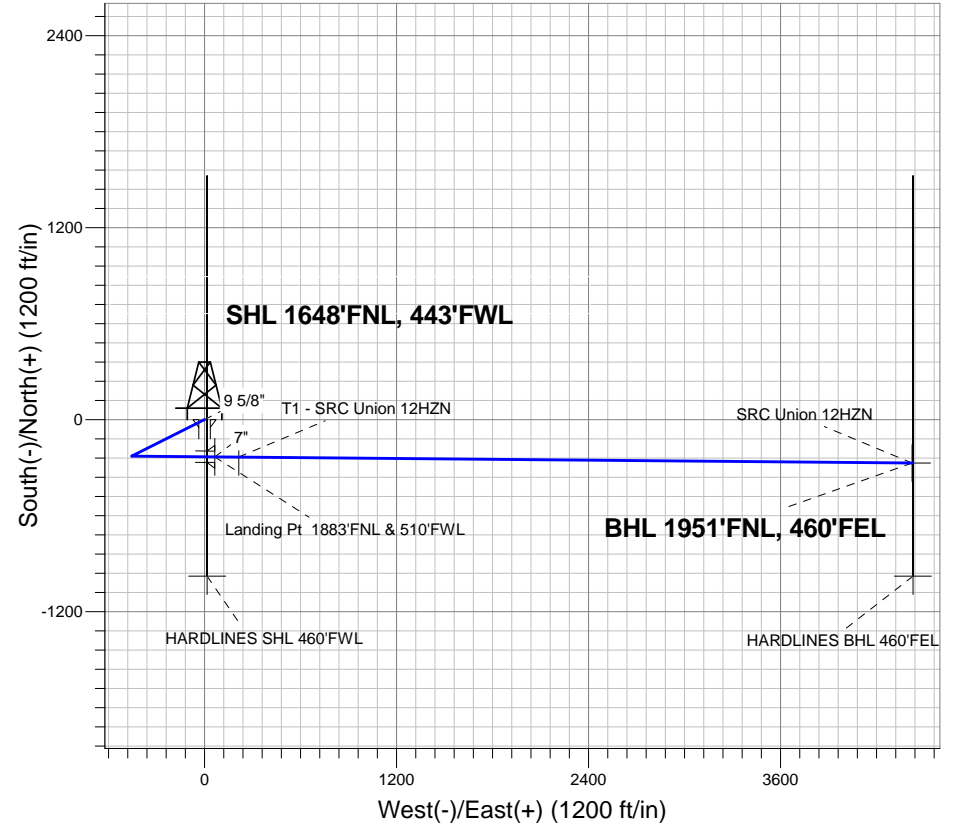
Azimuths to True North  
Magnetic North: 8.74°

Magnetic Field  
Strength: 52789.3nT  
Dip Angle: 66.76°  
Date: 4/8/2013  
Model: IGRF2010

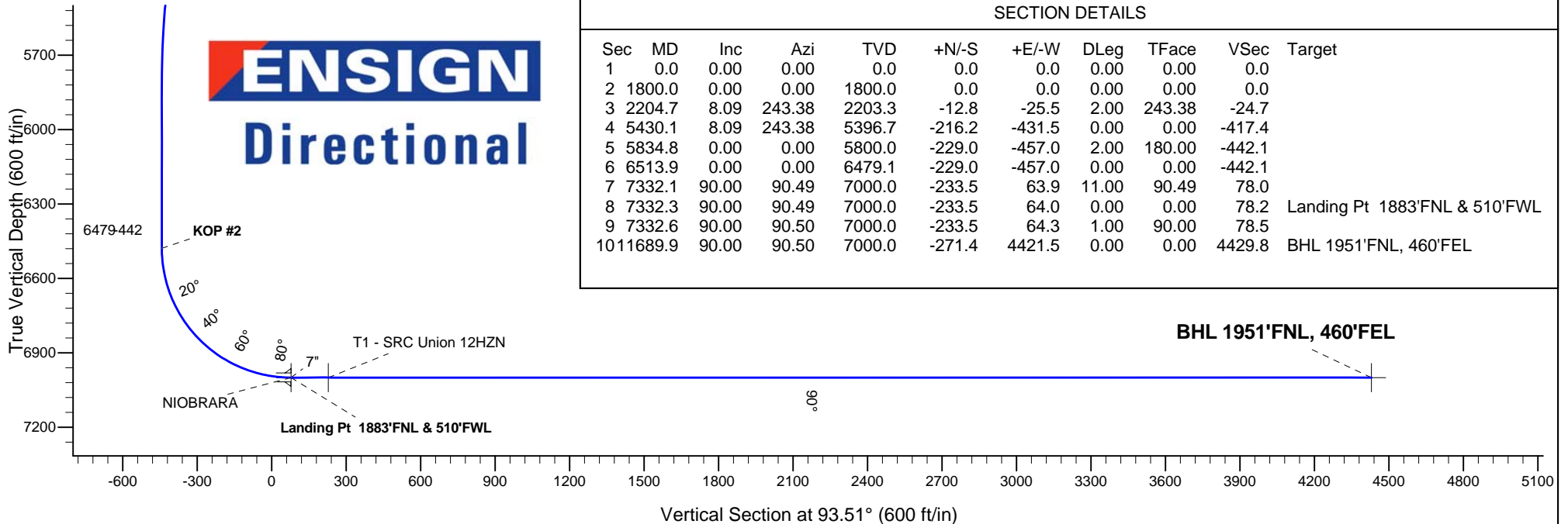
## ANNOTATIONS

TVD	MD	Annotation
1800.0	1800.0	KOP #1
6479.1	6513.9	KOP #2

SRC Union Pad Sec.5-T2N-R68W  
SRC Union 12HZN  
Plan #2 (4-08-13)



**ENSIGN**  
**Directional**



## SECTION DETAILS

Sec	MD	Inc	Azi	TVD	+N/-S	+E/-W	DLeg	TFace	VSec	Target
1	0.0	0.00	0.00	0.0	0.0	0.0	0.00	0.00	0.0	
2	1800.0	0.00	0.00	1800.0	0.0	0.0	0.00	0.00	0.0	
3	2204.7	8.09	243.38	2203.3	-12.8	-25.5	2.00	243.38	-24.7	
4	5430.1	8.09	243.38	5396.7	-216.2	-431.5	0.00	0.00	-417.4	
5	5834.8	0.00	0.00	5800.0	-229.0	-457.0	2.00	180.00	-442.1	
6	6513.9	0.00	0.00	6479.1	-229.0	-457.0	0.00	0.00	-442.1	
7	7332.1	90.00	90.49	7000.0	-233.5	63.9	11.00	90.49	78.0	
8	7332.3	90.00	90.49	7000.0	-233.5	64.0	0.00	0.00	78.2	Landing Pt 1883'FNL & 510'FWL
9	7332.6	90.00	90.50	7000.0	-233.5	64.3	1.00	90.00	78.5	
10	11689.9	90.00	90.50	7000.0	-271.4	4421.5	0.00	0.00	4429.8	BHL 1951'FNL, 460'FEL



## **Directional**

### **Synergy Resources**

**SEC.5-T2N-R68W**

**SRC Union Pad Sec.5-T2N-R68W**

**SRC Union 12HZN**

**Wellbore #1**

**Plan: Plan #2 (4-08-13)**

### **Standard Planning Report**

**08 April, 2013**

Plan Sections										
Measured Depth (ft)	Inclination (°)	Azimuth (°)	Vertical Depth (ft)	+N/-S (ft)	+E/-W (ft)	Dogleg Rate (°/100ft)	Build Rate (°/100ft)	Turn Rate (°/100ft)	TFO (°)	Target
0.0	0.00	0.00	0.0	0.0	0.0	0.00	0.00	0.00	0.00	
1,800.0	0.00	0.00	1,800.0	0.0	0.0	0.00	0.00	0.00	0.00	
2,204.7	8.09	243.38	2,203.3	-12.8	-25.5	2.00	2.00	0.00	243.38	
5,430.1	8.09	243.38	5,396.7	-216.2	-431.5	0.00	0.00	0.00	0.00	
5,834.8	0.00	0.00	5,800.0	-229.0	-457.0	2.00	-2.00	0.00	180.00	
6,513.9	0.00	0.00	6,479.1	-229.0	-457.0	0.00	0.00	0.00	0.00	
7,332.1	90.00	90.49	7,000.0	-233.5	63.9	11.00	11.00	0.00	90.49	
7,332.3	90.00	90.49	7,000.0	-233.5	64.0	0.00	0.00	0.00	0.00	Landing Pt 1883'FNL
7,332.6	90.00	90.50	7,000.0	-233.5	64.3	1.00	0.00	1.00	90.00	
11,689.9	90.00	90.50	7,000.0	-271.4	4,421.5	0.00	0.00	0.00	0.00	BHL 1951'FNL, 460'W

<b>Database:</b>	Landmark	<b>Local Co-ordinate Reference:</b>	Well SRC Union 12HZN
<b>Company:</b>	Synergy Resources	<b>TVD Reference:</b>	WELL @ 4978.0ft (RKB - 13')
<b>Project:</b>	SEC.5-T2N-R68W	<b>MD Reference:</b>	WELL @ 4978.0ft (RKB - 13')
<b>Site:</b>	SRC Union Pad Sec.5-T2N-R68W	<b>North Reference:</b>	True
<b>Well:</b>	SRC Union 12HZN	<b>Survey Calculation Method:</b>	Minimum Curvature
<b>Wellbore:</b>	Wellbore #1		
<b>Design:</b>	Plan #2 (4-08-13)		

Planned Survey									
Measured Depth (ft)	Inclination (°)	Azimuth (°)	Vertical Depth (ft)	+N/-S (ft)	+E/-W (ft)	Vertical Section (ft)	Dogleg Rate (°/100ft)	Build Rate (°/100ft)	Turn Rate (°/100ft)
0.0	0.00	0.00	0.0	0.0	0.0	0.0	0.00	0.00	0.00
1.0	0.00	0.00	1.0	0.0	0.0	0.0	0.00	0.00	0.00
<b>HARDLINES BHL 460'FEL - HARDLINES SHL 460'FWL</b>									
40.0	0.00	0.00	40.0	0.0	0.0	0.0	0.00	0.00	0.00
80.0	0.00	0.00	80.0	0.0	0.0	0.0	0.00	0.00	0.00
120.0	0.00	0.00	120.0	0.0	0.0	0.0	0.00	0.00	0.00
160.0	0.00	0.00	160.0	0.0	0.0	0.0	0.00	0.00	0.00
200.0	0.00	0.00	200.0	0.0	0.0	0.0	0.00	0.00	0.00
240.0	0.00	0.00	240.0	0.0	0.0	0.0	0.00	0.00	0.00
280.0	0.00	0.00	280.0	0.0	0.0	0.0	0.00	0.00	0.00
320.0	0.00	0.00	320.0	0.0	0.0	0.0	0.00	0.00	0.00
360.0	0.00	0.00	360.0	0.0	0.0	0.0	0.00	0.00	0.00
400.0	0.00	0.00	400.0	0.0	0.0	0.0	0.00	0.00	0.00
440.0	0.00	0.00	440.0	0.0	0.0	0.0	0.00	0.00	0.00
480.0	0.00	0.00	480.0	0.0	0.0	0.0	0.00	0.00	0.00
520.0	0.00	0.00	520.0	0.0	0.0	0.0	0.00	0.00	0.00
560.0	0.00	0.00	560.0	0.0	0.0	0.0	0.00	0.00	0.00
600.0	0.00	0.00	600.0	0.0	0.0	0.0	0.00	0.00	0.00
640.0	0.00	0.00	640.0	0.0	0.0	0.0	0.00	0.00	0.00
680.0	0.00	0.00	680.0	0.0	0.0	0.0	0.00	0.00	0.00
720.0	0.00	0.00	720.0	0.0	0.0	0.0	0.00	0.00	0.00
760.0	0.00	0.00	760.0	0.0	0.0	0.0	0.00	0.00	0.00
800.0	0.00	0.00	800.0	0.0	0.0	0.0	0.00	0.00	0.00
<b>9 5/8"</b>									
840.0	0.00	0.00	840.0	0.0	0.0	0.0	0.00	0.00	0.00
880.0	0.00	0.00	880.0	0.0	0.0	0.0	0.00	0.00	0.00
920.0	0.00	0.00	920.0	0.0	0.0	0.0	0.00	0.00	0.00
960.0	0.00	0.00	960.0	0.0	0.0	0.0	0.00	0.00	0.00
1,000.0	0.00	0.00	1,000.0	0.0	0.0	0.0	0.00	0.00	0.00
1,040.0	0.00	0.00	1,040.0	0.0	0.0	0.0	0.00	0.00	0.00
1,080.0	0.00	0.00	1,080.0	0.0	0.0	0.0	0.00	0.00	0.00
1,120.0	0.00	0.00	1,120.0	0.0	0.0	0.0	0.00	0.00	0.00
1,160.0	0.00	0.00	1,160.0	0.0	0.0	0.0	0.00	0.00	0.00
1,200.0	0.00	0.00	1,200.0	0.0	0.0	0.0	0.00	0.00	0.00
1,240.0	0.00	0.00	1,240.0	0.0	0.0	0.0	0.00	0.00	0.00
1,280.0	0.00	0.00	1,280.0	0.0	0.0	0.0	0.00	0.00	0.00
1,320.0	0.00	0.00	1,320.0	0.0	0.0	0.0	0.00	0.00	0.00
1,360.0	0.00	0.00	1,360.0	0.0	0.0	0.0	0.00	0.00	0.00
1,400.0	0.00	0.00	1,400.0	0.0	0.0	0.0	0.00	0.00	0.00
1,440.0	0.00	0.00	1,440.0	0.0	0.0	0.0	0.00	0.00	0.00
1,480.0	0.00	0.00	1,480.0	0.0	0.0	0.0	0.00	0.00	0.00
1,520.0	0.00	0.00	1,520.0	0.0	0.0	0.0	0.00	0.00	0.00
1,560.0	0.00	0.00	1,560.0	0.0	0.0	0.0	0.00	0.00	0.00
1,600.0	0.00	0.00	1,600.0	0.0	0.0	0.0	0.00	0.00	0.00
1,640.0	0.00	0.00	1,640.0	0.0	0.0	0.0	0.00	0.00	0.00
1,680.0	0.00	0.00	1,680.0	0.0	0.0	0.0	0.00	0.00	0.00
1,720.0	0.00	0.00	1,720.0	0.0	0.0	0.0	0.00	0.00	0.00
1,760.0	0.00	0.00	1,760.0	0.0	0.0	0.0	0.00	0.00	0.00
1,800.0	0.00	0.00	1,800.0	0.0	0.0	0.0	0.00	0.00	0.00
<b>KOP #1</b>									
1,840.0	0.80	243.38	1,840.0	-0.1	-0.2	-0.2	2.00	2.00	0.00
1,880.0	1.60	243.38	1,880.0	-0.5	-1.0	-1.0	2.00	2.00	0.00
1,920.0	2.40	243.38	1,920.0	-1.1	-2.2	-2.2	2.00	2.00	0.00

<b>Database:</b>	Landmark	<b>Local Co-ordinate Reference:</b>	Well SRC Union 12HZN
<b>Company:</b>	Synergy Resources	<b>TVD Reference:</b>	WELL @ 4978.0ft (RKB - 13')
<b>Project:</b>	SEC.5-T2N-R68W	<b>MD Reference:</b>	WELL @ 4978.0ft (RKB - 13')
<b>Site:</b>	SRC Union Pad Sec.5-T2N-R68W	<b>North Reference:</b>	True
<b>Well:</b>	SRC Union 12HZN	<b>Survey Calculation Method:</b>	Minimum Curvature
<b>Wellbore:</b>	Wellbore #1		
<b>Design:</b>	Plan #2 (4-08-13)		

Planned Survey									
Measured Depth (ft)	Inclination (°)	Azimuth (°)	Vertical Depth (ft)	+N/-S (ft)	+E/-W (ft)	Vertical Section (ft)	Dogleg Rate (°/100ft)	Build Rate (°/100ft)	Turn Rate (°/100ft)
1,960.0	3.20	243.38	1,959.9	-2.0	-4.0	-3.9	2.00	2.00	0.00
2,000.0	4.00	243.38	1,999.8	-3.1	-6.2	-6.0	2.00	2.00	0.00
2,040.0	4.80	243.38	2,039.7	-4.5	-9.0	-8.7	2.00	2.00	0.00
2,080.0	5.60	243.38	2,079.6	-6.1	-12.2	-11.8	2.00	2.00	0.00
2,120.0	6.40	243.38	2,119.3	-8.0	-16.0	-15.4	2.00	2.00	0.00
2,160.0	7.20	243.38	2,159.1	-10.1	-20.2	-19.5	2.00	2.00	0.00
2,200.0	8.00	243.38	2,198.7	-12.5	-24.9	-24.1	2.00	2.00	0.00
2,204.7	8.09	243.38	2,203.3	-12.8	-25.5	-24.7	2.00	2.00	0.00
2,240.0	8.09	243.38	2,238.3	-15.0	-30.0	-29.0	0.00	0.00	0.00
2,280.0	8.09	243.38	2,277.9	-17.5	-35.0	-33.9	0.00	0.00	0.00
2,320.0	8.09	243.38	2,317.5	-20.1	-40.0	-38.7	0.00	0.00	0.00
2,360.0	8.09	243.38	2,357.1	-22.6	-45.1	-43.6	0.00	0.00	0.00
2,400.0	8.09	243.38	2,396.7	-25.1	-50.1	-48.5	0.00	0.00	0.00
2,440.0	8.09	243.38	2,436.3	-27.6	-55.1	-53.3	0.00	0.00	0.00
2,480.0	8.09	243.38	2,475.9	-30.1	-60.2	-58.2	0.00	0.00	0.00
2,520.0	8.09	243.38	2,515.5	-32.7	-65.2	-63.1	0.00	0.00	0.00
2,560.0	8.09	243.38	2,555.1	-35.2	-70.2	-67.9	0.00	0.00	0.00
2,600.0	8.09	243.38	2,594.7	-37.7	-75.3	-72.8	0.00	0.00	0.00
2,640.0	8.09	243.38	2,634.3	-40.2	-80.3	-77.7	0.00	0.00	0.00
2,680.0	8.09	243.38	2,673.9	-42.8	-85.3	-82.6	0.00	0.00	0.00
2,720.0	8.09	243.38	2,713.5	-45.3	-90.4	-87.4	0.00	0.00	0.00
2,760.0	8.09	243.38	2,753.1	-47.8	-95.4	-92.3	0.00	0.00	0.00
2,800.0	8.09	243.38	2,792.7	-50.3	-100.4	-97.2	0.00	0.00	0.00
2,840.0	8.09	243.38	2,832.3	-52.9	-105.5	-102.0	0.00	0.00	0.00
2,880.0	8.09	243.38	2,871.9	-55.4	-110.5	-106.9	0.00	0.00	0.00
2,920.0	8.09	243.38	2,911.5	-57.9	-115.5	-111.8	0.00	0.00	0.00
2,960.0	8.09	243.38	2,951.1	-60.4	-120.6	-116.7	0.00	0.00	0.00
3,000.0	8.09	243.38	2,990.7	-62.9	-125.6	-121.5	0.00	0.00	0.00
3,040.0	8.09	243.38	3,030.3	-65.5	-130.7	-126.4	0.00	0.00	0.00
3,080.0	8.09	243.38	3,069.9	-68.0	-135.7	-131.3	0.00	0.00	0.00
3,120.0	8.09	243.38	3,109.5	-70.5	-140.7	-136.1	0.00	0.00	0.00
3,160.0	8.09	243.38	3,149.1	-73.0	-145.8	-141.0	0.00	0.00	0.00
3,200.0	8.09	243.38	3,188.7	-75.6	-150.8	-145.9	0.00	0.00	0.00
3,240.0	8.09	243.38	3,228.3	-78.1	-155.8	-150.7	0.00	0.00	0.00
3,280.0	8.09	243.38	3,267.9	-80.6	-160.9	-155.6	0.00	0.00	0.00
3,320.0	8.09	243.38	3,307.5	-83.1	-165.9	-160.5	0.00	0.00	0.00
3,360.0	8.09	243.38	3,347.1	-85.7	-170.9	-165.4	0.00	0.00	0.00
3,400.0	8.09	243.38	3,386.8	-88.2	-176.0	-170.2	0.00	0.00	0.00
3,440.0	8.09	243.38	3,426.4	-90.7	-181.0	-175.1	0.00	0.00	0.00
3,480.0	8.09	243.38	3,466.0	-93.2	-186.0	-180.0	0.00	0.00	0.00
3,520.0	8.09	243.38	3,505.6	-95.7	-191.1	-184.8	0.00	0.00	0.00
3,560.0	8.09	243.38	3,545.2	-98.3	-196.1	-189.7	0.00	0.00	0.00
3,600.0	8.09	243.38	3,584.8	-100.8	-201.1	-194.6	0.00	0.00	0.00
3,640.0	8.09	243.38	3,624.4	-103.3	-206.2	-199.5	0.00	0.00	0.00
3,680.0	8.09	243.38	3,664.0	-105.8	-211.2	-204.3	0.00	0.00	0.00
3,720.0	8.09	243.38	3,703.6	-108.4	-216.2	-209.2	0.00	0.00	0.00
3,760.0	8.09	243.38	3,743.2	-110.9	-221.3	-214.1	0.00	0.00	0.00
3,800.0	8.09	243.38	3,782.8	-113.4	-226.3	-218.9	0.00	0.00	0.00
3,840.0	8.09	243.38	3,822.4	-115.9	-231.3	-223.8	0.00	0.00	0.00
3,880.0	8.09	243.38	3,862.0	-118.4	-236.4	-228.7	0.00	0.00	0.00
3,920.0	8.09	243.38	3,901.6	-121.0	-241.4	-233.5	0.00	0.00	0.00
3,960.0	8.09	243.38	3,941.2	-123.5	-246.4	-238.4	0.00	0.00	0.00
4,000.0	8.09	243.38	3,980.8	-126.0	-251.5	-243.3	0.00	0.00	0.00
4,040.0	8.09	243.38	4,020.4	-128.5	-256.5	-248.2	0.00	0.00	0.00

<b>Database:</b>	Landmark	<b>Local Co-ordinate Reference:</b>	Well SRC Union 12HZN
<b>Company:</b>	Synergy Resources	<b>TVD Reference:</b>	WELL @ 4978.0ft (RKB - 13')
<b>Project:</b>	SEC.5-T2N-R68W	<b>MD Reference:</b>	WELL @ 4978.0ft (RKB - 13')
<b>Site:</b>	SRC Union Pad Sec.5-T2N-R68W	<b>North Reference:</b>	True
<b>Well:</b>	SRC Union 12HZN	<b>Survey Calculation Method:</b>	Minimum Curvature
<b>Wellbore:</b>	Wellbore #1		
<b>Design:</b>	Plan #2 (4-08-13)		

Planned Survey									
Measured Depth (ft)	Inclination (°)	Azimuth (°)	Vertical Depth (ft)	+N/-S (ft)	+E/-W (ft)	Vertical Section (ft)	Dogleg Rate (°/100ft)	Build Rate (°/100ft)	Turn Rate (°/100ft)
4,080.0	8.09	243.38	4,060.0	-131.1	-261.6	-253.0	0.00	0.00	0.00
4,100.2	8.09	243.38	4,080.0	-132.3	-264.1	-255.5	0.00	0.00	0.00
<b>SUSSEX</b>									
4,120.0	8.09	243.38	4,099.6	-133.6	-266.6	-257.9	0.00	0.00	0.00
4,160.0	8.09	243.38	4,139.2	-136.1	-271.6	-262.8	0.00	0.00	0.00
4,200.0	8.09	243.38	4,178.8	-138.6	-276.7	-267.6	0.00	0.00	0.00
4,240.0	8.09	243.38	4,218.4	-141.2	-281.7	-272.5	0.00	0.00	0.00
4,280.0	8.09	243.38	4,258.0	-143.7	-286.7	-277.4	0.00	0.00	0.00
4,320.0	8.09	243.38	4,297.6	-146.2	-291.8	-282.3	0.00	0.00	0.00
4,360.0	8.09	243.38	4,337.2	-148.7	-296.8	-287.1	0.00	0.00	0.00
4,400.0	8.09	243.38	4,376.8	-151.2	-301.8	-292.0	0.00	0.00	0.00
4,440.0	8.09	243.38	4,416.4	-153.8	-306.9	-296.9	0.00	0.00	0.00
4,480.0	8.09	243.38	4,456.0	-156.3	-311.9	-301.7	0.00	0.00	0.00
4,520.0	8.09	243.38	4,495.6	-158.8	-316.9	-306.6	0.00	0.00	0.00
4,524.4	8.09	243.38	4,500.0	-159.1	-317.5	-307.2	0.00	0.00	0.00
<b>SHANNON</b>									
4,560.0	8.09	243.38	4,535.2	-161.3	-322.0	-311.5	0.00	0.00	0.00
4,600.0	8.09	243.38	4,574.8	-163.9	-327.0	-316.4	0.00	0.00	0.00
4,640.0	8.09	243.38	4,614.4	-166.4	-332.0	-321.2	0.00	0.00	0.00
4,680.0	8.09	243.38	4,654.0	-168.9	-337.1	-326.1	0.00	0.00	0.00
4,720.0	8.09	243.38	4,693.6	-171.4	-342.1	-331.0	0.00	0.00	0.00
4,760.0	8.09	243.38	4,733.2	-174.0	-347.1	-335.8	0.00	0.00	0.00
4,800.0	8.09	243.38	4,772.8	-176.5	-352.2	-340.7	0.00	0.00	0.00
4,840.0	8.09	243.38	4,812.4	-179.0	-357.2	-345.6	0.00	0.00	0.00
4,880.0	8.09	243.38	4,852.0	-181.5	-362.2	-350.4	0.00	0.00	0.00
4,920.0	8.09	243.38	4,891.6	-184.0	-367.3	-355.3	0.00	0.00	0.00
4,960.0	8.09	243.38	4,931.2	-186.6	-372.3	-360.2	0.00	0.00	0.00
5,000.0	8.09	243.38	4,970.8	-189.1	-377.3	-365.1	0.00	0.00	0.00
5,040.0	8.09	243.38	5,010.4	-191.6	-382.4	-369.9	0.00	0.00	0.00
5,080.0	8.09	243.38	5,050.0	-194.1	-387.4	-374.8	0.00	0.00	0.00
5,120.0	8.09	243.38	5,089.6	-196.7	-392.5	-379.7	0.00	0.00	0.00
5,160.0	8.09	243.38	5,129.2	-199.2	-397.5	-384.5	0.00	0.00	0.00
5,200.0	8.09	243.38	5,168.8	-201.7	-402.5	-389.4	0.00	0.00	0.00
5,240.0	8.09	243.38	5,208.4	-204.2	-407.6	-394.3	0.00	0.00	0.00
5,280.0	8.09	243.38	5,248.0	-206.7	-412.6	-399.2	0.00	0.00	0.00
5,320.0	8.09	243.38	5,287.6	-209.3	-417.6	-404.0	0.00	0.00	0.00
5,360.0	8.09	243.38	5,327.2	-211.8	-422.7	-408.9	0.00	0.00	0.00
5,400.0	8.09	243.38	5,366.8	-214.3	-427.7	-413.8	0.00	0.00	0.00
5,430.1	8.09	243.38	5,396.7	-216.2	-431.5	-417.4	0.00	0.00	0.00
5,440.0	7.90	243.38	5,406.4	-216.8	-432.7	-418.6	2.00	-2.00	0.00
5,480.0	7.10	243.38	5,446.1	-219.2	-437.4	-423.1	2.00	-2.00	0.00
5,520.0	6.30	243.38	5,485.8	-221.3	-441.6	-427.2	2.00	-2.00	0.00
5,560.0	5.50	243.38	5,525.6	-223.1	-445.2	-430.7	2.00	-2.00	0.00
5,600.0	4.70	243.38	5,565.4	-224.7	-448.4	-433.8	2.00	-2.00	0.00
5,640.0	3.90	243.38	5,605.3	-226.0	-451.1	-436.4	2.00	-2.00	0.00
5,680.0	3.10	243.38	5,645.3	-227.1	-453.3	-438.5	2.00	-2.00	0.00
5,720.0	2.30	243.38	5,685.2	-228.0	-454.9	-440.1	2.00	-2.00	0.00
5,760.0	1.50	243.38	5,725.2	-228.6	-456.1	-441.3	2.00	-2.00	0.00
5,800.0	0.70	243.38	5,765.2	-228.9	-456.8	-441.9	2.00	-2.00	0.00
5,834.8	0.00	0.00	5,800.0	-229.0	-457.0	-442.1	2.00	-2.00	0.00
5,840.0	0.00	0.00	5,805.2	-229.0	-457.0	-442.1	0.00	0.00	0.00
5,880.0	0.00	0.00	5,845.2	-229.0	-457.0	-442.1	0.00	0.00	0.00
5,920.0	0.00	0.00	5,885.2	-229.0	-457.0	-442.1	0.00	0.00	0.00

<b>Database:</b>	Landmark	<b>Local Co-ordinate Reference:</b>	Well SRC Union 12HZN
<b>Company:</b>	Synergy Resources	<b>TVD Reference:</b>	WELL @ 4978.0ft (RKB - 13')
<b>Project:</b>	SEC.5-T2N-R68W	<b>MD Reference:</b>	WELL @ 4978.0ft (RKB - 13')
<b>Site:</b>	SRC Union Pad Sec.5-T2N-R68W	<b>North Reference:</b>	True
<b>Well:</b>	SRC Union 12HZN	<b>Survey Calculation Method:</b>	Minimum Curvature
<b>Wellbore:</b>	Wellbore #1		
<b>Design:</b>	Plan #2 (4-08-13)		

Planned Survey									
Measured Depth (ft)	Inclination (°)	Azimuth (°)	Vertical Depth (ft)	+N/-S (ft)	+E/-W (ft)	Vertical Section (ft)	Dogleg Rate (°/100ft)	Build Rate (°/100ft)	Turn Rate (°/100ft)
5,960.0	0.00	0.00	5,925.2	-229.0	-457.0	-442.1	0.00	0.00	0.00
6,000.0	0.00	0.00	5,965.2	-229.0	-457.0	-442.1	0.00	0.00	0.00
6,040.0	0.00	0.00	6,005.2	-229.0	-457.0	-442.1	0.00	0.00	0.00
6,080.0	0.00	0.00	6,045.2	-229.0	-457.0	-442.1	0.00	0.00	0.00
6,120.0	0.00	0.00	6,085.2	-229.0	-457.0	-442.1	0.00	0.00	0.00
6,160.0	0.00	0.00	6,125.2	-229.0	-457.0	-442.1	0.00	0.00	0.00
6,200.0	0.00	0.00	6,165.2	-229.0	-457.0	-442.1	0.00	0.00	0.00
6,240.0	0.00	0.00	6,205.2	-229.0	-457.0	-442.1	0.00	0.00	0.00
6,280.0	0.00	0.00	6,245.2	-229.0	-457.0	-442.1	0.00	0.00	0.00
6,320.0	0.00	0.00	6,285.2	-229.0	-457.0	-442.1	0.00	0.00	0.00
6,360.0	0.00	0.00	6,325.2	-229.0	-457.0	-442.1	0.00	0.00	0.00
6,400.0	0.00	0.00	6,365.2	-229.0	-457.0	-442.1	0.00	0.00	0.00
6,440.0	0.00	0.00	6,405.2	-229.0	-457.0	-442.1	0.00	0.00	0.00
6,480.0	0.00	0.00	6,445.2	-229.0	-457.0	-442.1	0.00	0.00	0.00
6,513.9	0.00	0.00	6,479.1	-229.0	-457.0	-442.1	0.00	0.00	0.00
<b>KOP #2</b>									
6,520.0	0.67	90.49	6,485.2	-229.0	-457.0	-442.1	10.92	10.92	0.00
6,560.0	5.07	90.49	6,525.1	-229.0	-455.0	-440.1	11.00	11.00	0.00
6,600.0	9.47	90.49	6,564.8	-229.1	-449.9	-435.0	11.00	11.00	0.00
6,640.0	13.87	90.49	6,604.0	-229.1	-441.8	-427.0	11.00	11.00	0.00
6,680.0	18.27	90.49	6,642.4	-229.2	-430.8	-415.9	11.00	11.00	0.00
6,720.0	22.67	90.49	6,679.9	-229.3	-416.8	-401.9	11.00	11.00	0.00
6,760.0	27.07	90.49	6,716.1	-229.5	-400.0	-385.1	11.00	11.00	0.00
6,800.0	31.47	90.49	6,751.0	-229.7	-380.4	-365.6	11.00	11.00	0.00
6,840.0	35.87	90.49	6,784.3	-229.9	-358.2	-343.5	11.00	11.00	0.00
6,880.0	40.27	90.49	6,815.8	-230.1	-333.6	-318.9	11.00	11.00	0.00
6,920.0	44.67	90.49	6,845.3	-230.3	-306.6	-291.9	11.00	11.00	0.00
6,960.0	49.07	90.49	6,872.6	-230.5	-277.4	-262.8	11.00	11.00	0.00
7,000.0	53.47	90.49	6,897.7	-230.8	-246.2	-231.6	11.00	11.00	0.00
7,040.0	57.87	90.49	6,920.2	-231.1	-213.2	-198.6	11.00	11.00	0.00
7,080.0	62.27	90.49	6,940.2	-231.4	-178.5	-164.0	11.00	11.00	0.00
7,120.0	66.67	90.49	6,957.4	-231.7	-142.5	-128.0	11.00	11.00	0.00
7,160.0	71.07	90.49	6,971.8	-232.0	-105.2	-90.7	11.00	11.00	0.00
7,200.0	75.47	90.49	6,983.3	-232.4	-66.9	-52.5	11.00	11.00	0.00
7,240.0	79.87	90.49	6,991.9	-232.7	-27.8	-13.5	11.00	11.00	0.00
7,280.0	84.27	90.49	6,997.4	-233.0	11.8	26.1	11.00	11.00	0.00
7,320.0	88.67	90.49	6,999.9	-233.4	51.7	65.9	11.00	11.00	0.00
7,332.1	90.00	90.49	7,000.0	-233.5	63.8	78.0	11.00	11.00	0.00
<b>NIOBRARA - 7"</b>									
7,332.3	90.00	90.49	7,000.0	-233.5	64.0	78.2	1.62	1.62	0.00
<b>Landing Pt 1883'FNL &amp; 510'FWL</b>									
7,332.6	90.00	90.50	7,000.0	-233.5	64.3	78.5	1.00	0.00	1.00
7,360.0	90.00	90.50	7,000.0	-233.7	91.7	105.9	0.00	0.00	0.00
7,400.0	90.00	90.50	7,000.0	-234.1	131.7	145.8	0.00	0.00	0.00
7,440.0	90.00	90.50	7,000.0	-234.4	171.7	185.8	0.00	0.00	0.00
7,480.0	90.00	90.50	7,000.0	-234.8	211.7	225.7	0.00	0.00	0.00
7,482.3	90.00	90.50	7,000.0	-234.8	214.1	228.0	0.00	0.00	0.00
<b>T1 - SRC Union 12HZN</b>									
7,520.0	90.00	90.50	7,000.0	-235.1	251.7	265.7	0.00	0.00	0.00
7,560.0	90.00	90.50	7,000.0	-235.5	291.7	305.6	0.00	0.00	0.00
7,600.0	90.00	90.50	7,000.0	-235.8	331.7	345.5	0.00	0.00	0.00
7,640.0	90.00	90.50	7,000.0	-236.2	371.7	385.5	0.00	0.00	0.00
7,680.0	90.00	90.50	7,000.0	-236.5	411.7	425.4	0.00	0.00	0.00
7,720.0	90.00	90.50	7,000.0	-236.9	451.7	465.4	0.00	0.00	0.00

<b>Database:</b>	Landmark	<b>Local Co-ordinate Reference:</b>	Well SRC Union 12HZN
<b>Company:</b>	Synergy Resources	<b>TVD Reference:</b>	WELL @ 4978.0ft (RKB - 13')
<b>Project:</b>	SEC.5-T2N-R68W	<b>MD Reference:</b>	WELL @ 4978.0ft (RKB - 13')
<b>Site:</b>	SRC Union Pad Sec.5-T2N-R68W	<b>North Reference:</b>	True
<b>Well:</b>	SRC Union 12HZN	<b>Survey Calculation Method:</b>	Minimum Curvature
<b>Wellbore:</b>	Wellbore #1		
<b>Design:</b>	Plan #2 (4-08-13)		

Planned Survey									
Measured Depth (ft)	Inclination (°)	Azimuth (°)	Vertical Depth (ft)	+N/-S (ft)	+E/-W (ft)	Vertical Section (ft)	Dogleg Rate (°/100ft)	Build Rate (°/100ft)	Turn Rate (°/100ft)
7,760.0	90.00	90.50	7,000.0	-237.2	491.7	505.3	0.00	0.00	0.00
7,800.0	90.00	90.50	7,000.0	-237.6	531.7	545.3	0.00	0.00	0.00
7,840.0	90.00	90.50	7,000.0	-237.9	571.7	585.2	0.00	0.00	0.00
7,880.0	90.00	90.50	7,000.0	-238.3	611.7	625.2	0.00	0.00	0.00
7,920.0	90.00	90.50	7,000.0	-238.6	651.7	665.1	0.00	0.00	0.00
7,960.0	90.00	90.50	7,000.0	-239.0	691.7	705.0	0.00	0.00	0.00
8,000.0	90.00	90.50	7,000.0	-239.3	731.7	745.0	0.00	0.00	0.00
8,040.0	90.00	90.50	7,000.0	-239.6	771.7	784.9	0.00	0.00	0.00
8,080.0	90.00	90.50	7,000.0	-240.0	811.7	824.9	0.00	0.00	0.00
8,120.0	90.00	90.50	7,000.0	-240.3	851.7	864.8	0.00	0.00	0.00
8,160.0	90.00	90.50	7,000.0	-240.7	891.7	904.8	0.00	0.00	0.00
8,200.0	90.00	90.50	7,000.0	-241.0	931.7	944.7	0.00	0.00	0.00
8,240.0	90.00	90.50	7,000.0	-241.4	971.7	984.7	0.00	0.00	0.00
8,280.0	90.00	90.50	7,000.0	-241.7	1,011.7	1,024.6	0.00	0.00	0.00
8,320.0	90.00	90.50	7,000.0	-242.1	1,051.7	1,064.5	0.00	0.00	0.00
8,360.0	90.00	90.50	7,000.0	-242.4	1,091.7	1,104.5	0.00	0.00	0.00
8,400.0	90.00	90.50	7,000.0	-242.8	1,131.7	1,144.4	0.00	0.00	0.00
8,440.0	90.00	90.50	7,000.0	-243.1	1,171.7	1,184.4	0.00	0.00	0.00
8,480.0	90.00	90.50	7,000.0	-243.5	1,211.7	1,224.3	0.00	0.00	0.00
8,520.0	90.00	90.50	7,000.0	-243.8	1,251.7	1,264.3	0.00	0.00	0.00
8,560.0	90.00	90.50	7,000.0	-244.2	1,291.7	1,304.2	0.00	0.00	0.00
8,600.0	90.00	90.50	7,000.0	-244.5	1,331.7	1,344.2	0.00	0.00	0.00
8,640.0	90.00	90.50	7,000.0	-244.9	1,371.7	1,384.1	0.00	0.00	0.00
8,680.0	90.00	90.50	7,000.0	-245.2	1,411.7	1,424.0	0.00	0.00	0.00
8,720.0	90.00	90.50	7,000.0	-245.6	1,451.7	1,464.0	0.00	0.00	0.00
8,760.0	90.00	90.50	7,000.0	-245.9	1,491.7	1,503.9	0.00	0.00	0.00
8,800.0	90.00	90.50	7,000.0	-246.2	1,531.7	1,543.9	0.00	0.00	0.00
8,840.0	90.00	90.50	7,000.0	-246.6	1,571.7	1,583.8	0.00	0.00	0.00
8,880.0	90.00	90.50	7,000.0	-246.9	1,611.7	1,623.8	0.00	0.00	0.00
8,920.0	90.00	90.50	7,000.0	-247.3	1,651.7	1,663.7	0.00	0.00	0.00
8,960.0	90.00	90.50	7,000.0	-247.6	1,691.7	1,703.7	0.00	0.00	0.00
9,000.0	90.00	90.50	7,000.0	-248.0	1,731.7	1,743.6	0.00	0.00	0.00
9,040.0	90.00	90.50	7,000.0	-248.3	1,771.7	1,783.5	0.00	0.00	0.00
9,080.0	90.00	90.50	7,000.0	-248.7	1,811.7	1,823.5	0.00	0.00	0.00
9,120.0	90.00	90.50	7,000.0	-249.0	1,851.7	1,863.4	0.00	0.00	0.00
9,160.0	90.00	90.50	7,000.0	-249.4	1,891.7	1,903.4	0.00	0.00	0.00
9,200.0	90.00	90.50	7,000.0	-249.7	1,931.7	1,943.3	0.00	0.00	0.00
9,240.0	90.00	90.50	7,000.0	-250.1	1,971.7	1,983.3	0.00	0.00	0.00
9,280.0	90.00	90.50	7,000.0	-250.4	2,011.7	2,023.2	0.00	0.00	0.00
9,320.0	90.00	90.50	7,000.0	-250.8	2,051.7	2,063.2	0.00	0.00	0.00
9,360.0	90.00	90.50	7,000.0	-251.1	2,091.7	2,103.1	0.00	0.00	0.00
9,400.0	90.00	90.50	7,000.0	-251.5	2,131.6	2,143.0	0.00	0.00	0.00
9,440.0	90.00	90.50	7,000.0	-251.8	2,171.6	2,183.0	0.00	0.00	0.00
9,480.0	90.00	90.50	7,000.0	-252.2	2,211.6	2,222.9	0.00	0.00	0.00
9,520.0	90.00	90.50	7,000.0	-252.5	2,251.6	2,262.9	0.00	0.00	0.00
9,560.0	90.00	90.50	7,000.0	-252.9	2,291.6	2,302.8	0.00	0.00	0.00
9,600.0	90.00	90.50	7,000.0	-253.2	2,331.6	2,342.8	0.00	0.00	0.00
9,640.0	90.00	90.50	7,000.0	-253.5	2,371.6	2,382.7	0.00	0.00	0.00
9,680.0	90.00	90.50	7,000.0	-253.9	2,411.6	2,422.7	0.00	0.00	0.00
9,720.0	90.00	90.50	7,000.0	-254.2	2,451.6	2,462.6	0.00	0.00	0.00
9,760.0	90.00	90.50	7,000.0	-254.6	2,491.6	2,502.6	0.00	0.00	0.00
9,800.0	90.00	90.50	7,000.0	-254.9	2,531.6	2,542.5	0.00	0.00	0.00
9,840.0	90.00	90.50	7,000.0	-255.3	2,571.6	2,582.4	0.00	0.00	0.00
9,880.0	90.00	90.50	7,000.0	-255.6	2,611.6	2,622.4	0.00	0.00	0.00



<b>Database:</b>	Landmark	<b>Local Co-ordinate Reference:</b>	Well SRC Union 12HZN
<b>Company:</b>	Synergy Resources	<b>TVD Reference:</b>	WELL @ 4978.0ft (RKB - 13')
<b>Project:</b>	SEC.5-T2N-R68W	<b>MD Reference:</b>	WELL @ 4978.0ft (RKB - 13')
<b>Site:</b>	SRC Union Pad Sec.5-T2N-R68W	<b>North Reference:</b>	True
<b>Well:</b>	SRC Union 12HZN	<b>Survey Calculation Method:</b>	Minimum Curvature
<b>Wellbore:</b>	Wellbore #1		
<b>Design:</b>	Plan #2 (4-08-13)		

Planned Survey									
Measured Depth (ft)	Inclination (°)	Azimuth (°)	Vertical Depth (ft)	+N/-S (ft)	+E/-W (ft)	Vertical Section (ft)	Dogleg Rate (°/100ft)	Build Rate (°/100ft)	Turn Rate (°/100ft)
9,920.0	90.00	90.50	7,000.0	-256.0	2,651.6	2,662.3	0.00	0.00	0.00
9,960.0	90.00	90.50	7,000.0	-256.3	2,691.6	2,702.3	0.00	0.00	0.00
10,000.0	90.00	90.50	7,000.0	-256.7	2,731.6	2,742.2	0.00	0.00	0.00
10,040.0	90.00	90.50	7,000.0	-257.0	2,771.6	2,782.2	0.00	0.00	0.00
10,080.0	90.00	90.50	7,000.0	-257.4	2,811.6	2,822.1	0.00	0.00	0.00
10,120.0	90.00	90.50	7,000.0	-257.7	2,851.6	2,862.1	0.00	0.00	0.00
10,160.0	90.00	90.50	7,000.0	-258.1	2,891.6	2,902.0	0.00	0.00	0.00
10,200.0	90.00	90.50	7,000.0	-258.4	2,931.6	2,941.9	0.00	0.00	0.00
10,240.0	90.00	90.50	7,000.0	-258.8	2,971.6	2,981.9	0.00	0.00	0.00
10,280.0	90.00	90.50	7,000.0	-259.1	3,011.6	3,021.8	0.00	0.00	0.00
10,320.0	90.00	90.50	7,000.0	-259.5	3,051.6	3,061.8	0.00	0.00	0.00
10,360.0	90.00	90.50	7,000.0	-259.8	3,091.6	3,101.7	0.00	0.00	0.00
10,400.0	90.00	90.50	7,000.0	-260.2	3,131.6	3,141.7	0.00	0.00	0.00
10,440.0	90.00	90.50	7,000.0	-260.5	3,171.6	3,181.6	0.00	0.00	0.00
10,480.0	90.00	90.50	7,000.0	-260.8	3,211.6	3,221.6	0.00	0.00	0.00
10,520.0	90.00	90.50	7,000.0	-261.2	3,251.6	3,261.5	0.00	0.00	0.00
10,560.0	90.00	90.50	7,000.0	-261.5	3,291.6	3,301.4	0.00	0.00	0.00
10,600.0	90.00	90.50	7,000.0	-261.9	3,331.6	3,341.4	0.00	0.00	0.00
10,640.0	90.00	90.50	7,000.0	-262.2	3,371.6	3,381.3	0.00	0.00	0.00
10,680.0	90.00	90.50	7,000.0	-262.6	3,411.6	3,421.3	0.00	0.00	0.00
10,720.0	90.00	90.50	7,000.0	-262.9	3,451.6	3,461.2	0.00	0.00	0.00
10,760.0	90.00	90.50	7,000.0	-263.3	3,491.6	3,501.2	0.00	0.00	0.00
10,800.0	90.00	90.50	7,000.0	-263.6	3,531.6	3,541.1	0.00	0.00	0.00
10,840.0	90.00	90.50	7,000.0	-264.0	3,571.6	3,581.1	0.00	0.00	0.00
10,880.0	90.00	90.50	7,000.0	-264.3	3,611.6	3,621.0	0.00	0.00	0.00
10,920.0	90.00	90.50	7,000.0	-264.7	3,651.6	3,660.9	0.00	0.00	0.00
10,960.0	90.00	90.50	7,000.0	-265.0	3,691.6	3,700.9	0.00	0.00	0.00
11,000.0	90.00	90.50	7,000.0	-265.4	3,731.6	3,740.8	0.00	0.00	0.00
11,040.0	90.00	90.50	7,000.0	-265.7	3,771.6	3,780.8	0.00	0.00	0.00
11,080.0	90.00	90.50	7,000.0	-266.1	3,811.6	3,820.7	0.00	0.00	0.00
11,120.0	90.00	90.50	7,000.0	-266.4	3,851.6	3,860.7	0.00	0.00	0.00
11,160.0	90.00	90.50	7,000.0	-266.8	3,891.6	3,900.6	0.00	0.00	0.00
11,200.0	90.00	90.50	7,000.0	-267.1	3,931.6	3,940.6	0.00	0.00	0.00
11,240.0	90.00	90.50	7,000.0	-267.4	3,971.6	3,980.5	0.00	0.00	0.00
11,280.0	90.00	90.50	7,000.0	-267.8	4,011.6	4,020.4	0.00	0.00	0.00
11,320.0	90.00	90.50	7,000.0	-268.1	4,051.6	4,060.4	0.00	0.00	0.00
11,360.0	90.00	90.50	7,000.0	-268.5	4,091.6	4,100.3	0.00	0.00	0.00
11,400.0	90.00	90.50	7,000.0	-268.8	4,131.6	4,140.3	0.00	0.00	0.00
11,440.0	90.00	90.50	7,000.0	-269.2	4,171.6	4,180.2	0.00	0.00	0.00
11,480.0	90.00	90.50	7,000.0	-269.5	4,211.6	4,220.2	0.00	0.00	0.00
11,520.0	90.00	90.50	7,000.0	-269.9	4,251.6	4,260.1	0.00	0.00	0.00
11,560.0	90.00	90.50	7,000.0	-270.2	4,291.6	4,300.1	0.00	0.00	0.00
11,600.0	90.00	90.50	7,000.0	-270.6	4,331.6	4,340.0	0.00	0.00	0.00
11,640.0	90.00	90.50	7,000.0	-270.9	4,371.6	4,380.0	0.00	0.00	0.00
11,680.0	90.00	90.50	7,000.0	-271.3	4,411.6	4,419.9	0.00	0.00	0.00
11,689.9	90.00	90.50	7,000.0	-271.4	4,421.5	4,429.8	0.00	0.00	0.00
BHL 1951'FNL, 460'FEL									

<b>Database:</b>	Landmark	<b>Local Co-ordinate Reference:</b>	Well SRC Union 12HZN
<b>Company:</b>	Synergy Resources	<b>TVD Reference:</b>	WELL @ 4978.0ft (RKB - 13')
<b>Project:</b>	SEC.5-T2N-R68W	<b>MD Reference:</b>	WELL @ 4978.0ft (RKB - 13')
<b>Site:</b>	SRC Union Pad Sec.5-T2N-R68W	<b>North Reference:</b>	True
<b>Well:</b>	SRC Union 12HZN	<b>Survey Calculation Method:</b>	Minimum Curvature
<b>Wellbore:</b>	Wellbore #1		
<b>Design:</b>	Plan #2 (4-08-13)		

Casing Points					
Measured Depth (ft)	Vertical Depth (ft)	Name	Casing Diameter (")	Hole Diameter (")	
7,332.1	7,000.0	7"	7	8-3/4	
800.0	800.0	9 5/8"	9-5/8	12-1/4	

Formations					
Measured Depth (ft)	Vertical Depth (ft)	Name	Lithology	Dip (°)	Dip Direction (°)
4,100.2	4,080.0	SUSSEX		0.00	
4,524.4	4,500.0	SHANNON		0.00	
7,332.1	7,000.0	NIOBRARA		0.00	

Plan Annotations				
Measured Depth (ft)	Vertical Depth (ft)	Local Coordinates		Comment
		+N/-S (ft)	+E/-W (ft)	
1,800.0	1,800.0	0.0	0.0	KOP #1
6,513.9	6,479.1	-229.0	-457.0	KOP #2



## **Directional**

### **Synergy Resources**

**SEC.5-T2N-R68W**

**SRC Union Pad Sec.5-T2N-R68W**

**SRC Union 12HZN**

**Wellbore #1**

**Plan #2 (4-08-13)**

## **Anticollision Report**

**08 April, 2013**



<b>Company:</b>	Synergy Resources	<b>Local Co-ordinate Reference:</b>	Well SRC Union 12HZN
<b>Project:</b>	SEC.5-T2N-R68W	<b>TVD Reference:</b>	WELL @ 4978.0ft (RKB - 13')
<b>Reference Site:</b>	SRC Union Pad Sec.5-T2N-R68W	<b>MD Reference:</b>	WELL @ 4978.0ft (RKB - 13')
<b>Site Error:</b>	0.0ft	<b>North Reference:</b>	True
<b>Reference Well:</b>	SRC Union 12HZN	<b>Survey Calculation Method:</b>	Minimum Curvature
<b>Well Error:</b>	0.0ft	<b>Output errors are at</b>	2.00 sigma
<b>Reference Wellbore</b>	Wellbore #1	<b>Database:</b>	Landmark
<b>Reference Design:</b>	Plan #2 (4-08-13)	<b>Offset TVD Reference:</b>	Offset Datum

Offset Design													Offset Site Error:	0.0 ft
Survey Program: 0-MWD													Offset Well Error:	0.0 ft
Reference		Offset		Semi Major Axis			Distance							Warning
Measured Depth (ft)	Vertical Depth (ft)	Measured Depth (ft)	Vertical Depth (ft)	Reference (ft)	Offset (ft)	Highside Toolface (°)	Offset Wellbore Centre +N/-S (ft)	+E/-W (ft)	Between Centres (ft)	Between Ellipses (ft)	Minimum Separation (ft)	Separation Factor		
500.0	500.0	499.0	499.0	1.0	1.0	-110.78	-14.2	-37.4	40.1	38.0	2.02	19.822		
600.0	600.0	599.0	599.0	1.2	1.2	-110.78	-14.2	-37.4	40.1	37.6	2.47	16.215		
700.0	700.0	699.0	699.0	1.5	1.5	-110.78	-14.2	-37.4	40.1	37.1	2.92	13.718		
800.0	800.0	799.0	799.0	1.7	1.7	-110.78	-14.2	-37.4	40.1	36.7	3.37	11.888		
900.0	900.0	899.0	899.0	1.9	1.9	-110.78	-14.2	-37.4	40.1	36.2	3.82	10.488		
1,000.0	1,000.0	999.7	999.7	2.1	2.1	-109.41	-13.0	-36.9	39.2	34.9	4.27	9.173		
1,100.0	1,100.0	1,100.3	1,100.2	2.4	2.4	-104.88	-9.4	-35.4	36.6	31.9	4.72	7.754		
1,200.0	1,200.0	1,200.6	1,200.3	2.6	2.6	-95.87	-3.4	-32.7	32.9	27.8	5.17	6.368		
1,300.0	1,300.0	1,300.5	1,299.7	2.8	2.8	-80.19	5.0	-29.1	29.5	23.9	5.62	5.251		
1,362.3	1,362.3	1,362.4	1,361.3	2.9	3.0	-66.52	11.4	-26.3	28.7	22.8	5.91	4.856 CC, ES		
1,400.0	1,400.0	1,399.8	1,398.4	3.0	3.1	-57.21	15.7	-24.4	29.1	23.0	6.08	4.781 SF		
1,500.0	1,500.0	1,498.5	1,496.0	3.3	3.3	-33.23	28.7	-18.8	34.4	27.9	6.57	5.241		
1,600.0	1,600.0	1,596.9	1,593.2	3.5	3.6	-15.91	43.5	-12.4	45.6	38.5	7.10	6.422		
1,700.0	1,700.0	1,695.6	1,690.4	3.7	3.9	-5.77	58.4	-5.9	59.3	51.7	7.63	7.770		
1,800.0	1,800.0	1,794.2	1,787.7	3.9	4.2	0.46	73.3	0.6	74.2	66.0	8.18	9.076		
1,900.0	1,900.0	1,892.6	1,884.7	4.1	4.6	121.86	88.2	7.1	90.6	82.2	8.38	10.805		
2,000.0	1,999.8	1,990.4	1,981.2	4.3	4.9	126.55	103.0	13.5	109.4	100.6	8.78	12.457		
2,100.0	2,099.5	2,087.5	2,077.0	4.5	5.2	130.91	117.8	19.9	131.1	121.9	9.18	14.273		
2,200.0	2,198.7	2,183.9	2,172.1	4.7	5.6	134.84	132.3	26.2	155.7	146.1	9.58	16.251		
2,300.0	2,297.7	2,279.7	2,266.6	5.0	5.9	138.35	146.9	32.5	182.4	172.3	10.01	18.224		
2,400.0	2,396.7	2,375.6	2,361.2	5.2	6.2	140.98	161.4	38.8	209.5	199.0	10.44	20.058		
2,500.0	2,495.7	2,471.5	2,455.7	5.5	6.6	143.01	175.9	45.1	236.9	226.0	10.89	21.756		
2,600.0	2,594.7	2,567.3	2,550.2	5.8	6.9	144.62	190.4	51.4	264.5	253.2	11.34	23.327		
2,700.0	2,693.7	2,663.2	2,644.8	6.0	7.3	145.92	204.9	57.8	292.4	280.6	11.80	24.778		
2,800.0	2,792.7	2,759.1	2,739.3	6.3	7.6	147.00	219.4	64.1	320.3	308.0	12.26	26.120		
2,900.0	2,891.7	2,854.9	2,833.9	6.6	7.9	147.90	233.9	70.4	348.3	335.6	12.73	27.363		
3,000.0	2,990.7	2,950.8	2,928.4	6.9	8.3	148.68	248.5	76.7	376.4	363.2	13.20	28.515		
3,100.0	3,089.7	3,046.6	3,023.0	7.2	8.6	149.34	263.0	83.0	404.5	390.8	13.67	29.586		
3,200.0	3,188.7	3,142.5	3,117.5	7.5	9.0	149.92	277.5	89.3	432.7	418.5	14.15	30.582		
3,300.0	3,287.7	3,238.4	3,212.1	7.8	9.3	150.42	292.0	95.6	460.9	446.3	14.63	31.511		
3,400.0	3,386.8	3,334.2	3,306.6	8.1	9.7	150.87	306.5	101.9	489.1	474.0	15.11	32.378		
3,500.0	3,485.8	3,430.1	3,401.2	8.5	10.0	151.27	321.0	108.2	517.4	501.8	15.59	33.189		
3,600.0	3,584.8	3,526.0	3,495.7	8.8	10.4	151.63	335.5	114.5	545.7	529.6	16.07	33.949		
3,700.0	3,683.8	3,621.8	3,590.3	9.1	10.8	151.95	350.1	120.8	574.0	557.4	16.56	34.663		
3,800.0	3,782.8	3,717.7	3,684.8	9.4	11.1	152.25	364.6	127.1	602.3	585.3	17.05	35.333		
3,900.0	3,881.8	3,813.5	3,779.4	9.8	11.5	152.51	379.1	133.4	630.6	613.1	17.54	35.965		
4,000.0	3,980.8	3,909.4	3,873.9	10.1	11.8	152.76	393.6	139.7	659.0	641.0	18.03	36.560		
4,100.0	4,079.8	4,005.3	3,968.5	10.4	12.2	152.98	408.1	146.0	687.3	668.8	18.52	37.122		
4,200.0	4,178.8	4,101.1	4,063.0	10.8	12.5	153.19	422.6	152.4	715.7	696.7	19.01	37.653		
4,300.0	4,277.8	4,197.0	4,157.5	11.1	12.9	153.38	437.2	158.7	744.1	724.6	19.50	38.156		
4,400.0	4,376.8	4,292.9	4,252.1	11.4	13.2	153.55	451.7	165.0	772.5	752.5	19.99	38.633		
4,500.0	4,475.8	4,388.7	4,346.6	11.8	13.6	153.72	466.2	171.3	800.8	780.4	20.49	39.086		
4,600.0	4,574.8	4,484.6	4,441.2	12.1	14.0	153.87	480.7	177.6	829.2	808.3	20.99	39.516		
4,700.0	4,673.8	4,580.4	4,535.7	12.4	14.3	154.01	495.2	183.9	857.6	836.2	21.48	39.925		
4,800.0	4,772.8	4,676.3	4,630.3	12.8	14.7	154.14	509.7	190.2	886.0	864.1	21.98	40.314		
4,900.0	4,871.8	4,772.2	4,724.8	13.1	15.0	154.27	524.2	196.5	914.4	892.0	22.48	40.685		
5,000.0	4,970.8	4,868.0	4,819.4	13.5	15.4	154.39	538.8	202.8	942.8	919.9	22.97	41.040		
5,100.0	5,069.8	4,963.9	4,913.9	13.8	15.7	154.50	553.3	209.1	971.3	947.8	23.47	41.378		
5,200.0	5,168.8	5,059.8	5,008.5	14.1	16.1	154.60	567.8	215.4	999.7	975.7	23.97	41.701		

<b>Company:</b>	Synergy Resources	<b>Local Co-ordinate Reference:</b>	Well SRC Union 12HZN
<b>Project:</b>	SEC.5-T2N-R68W	<b>TVD Reference:</b>	WELL @ 4978.0ft (RKB - 13')
<b>Reference Site:</b>	SRC Union Pad Sec.5-T2N-R68W	<b>MD Reference:</b>	WELL @ 4978.0ft (RKB - 13')
<b>Site Error:</b>	0.0ft	<b>North Reference:</b>	True
<b>Reference Well:</b>	SRC Union 12HZN	<b>Survey Calculation Method:</b>	Minimum Curvature
<b>Well Error:</b>	0.0ft	<b>Output errors are at</b>	2.00 sigma
<b>Reference Wellbore</b>	Wellbore #1	<b>Database:</b>	Landmark
<b>Reference Design:</b>	Plan #2 (4-08-13)	<b>Offset TVD Reference:</b>	Offset Datum

Offset Design													Offset Site Error:	0.0 ft
Survey Program: 0-MWD													Offset Well Error:	0.0 ft
Reference		Offset		Semi Major Axis			Distance							Warning
Measured Depth (ft)	Vertical Depth (ft)	Measured Depth (ft)	Vertical Depth (ft)	Reference (ft)	Offset (ft)	Highside Toolface (°)	Offset Wellbore Centre +N/-S (ft)	+E/-W (ft)	Between Centres (ft)	Between Ellipses (ft)	Minimum Separation (ft)	Separation Factor		
0.0	0.0	0.0	0.0	0.0	0.0	-110.93	-35.7	-93.3	100.0					
100.0	100.0	98.0	98.0	0.1	0.1	-110.93	-35.7	-93.3	99.9	99.7	0.22	449.114		
200.0	200.0	198.0	198.0	0.3	0.3	-110.93	-35.7	-93.3	99.9	99.3	0.67	149.205		
300.0	300.0	298.2	298.2	0.6	0.6	-109.97	-34.1	-93.8	99.8	98.7	1.12	88.956		
400.0	400.0	398.2	398.1	0.8	0.8	-107.00	-29.1	-95.3	99.6	98.0	1.58	62.936		
418.3	418.3	416.6	416.3	0.8	0.8	-106.24	-27.9	-95.6	99.6	97.9	1.67	59.700 CC		
500.0	500.0	497.8	497.2	1.0	1.0	-102.06	-20.9	-97.7	99.9	97.8	2.05	48.721 ES		
600.0	600.0	596.6	595.3	1.2	1.3	-95.31	-9.4	-101.0	101.5	98.9	2.53	40.076		
700.0	700.0	694.5	692.0	1.5	1.6	-87.19	5.2	-105.2	105.5	102.5	3.05	34.646		
800.0	800.0	791.2	787.0	1.7	2.0	-78.40	22.7	-110.3	113.2	109.6	3.61	31.331		
900.0	900.0	886.8	880.3	1.9	2.4	-69.72	42.9	-116.2	125.2	120.9	4.24	29.520		
1,000.0	1,000.0	984.1	974.8	2.1	2.8	-62.16	64.8	-122.6	140.6	135.7	4.92	28.576		
1,100.0	1,100.0	1,081.3	1,069.4	2.4	3.3	-56.13	86.6	-128.9	157.9	152.3	5.61	28.139		
1,200.0	1,200.0	1,178.5	1,163.9	2.6	3.7	-51.31	108.4	-135.3	176.7	170.4	6.31	28.002 SF		
1,300.0	1,300.0	1,275.8	1,258.5	2.8	4.2	-47.42	130.2	-141.6	196.4	189.4	7.00	28.038		
1,400.0	1,400.0	1,373.0	1,353.0	3.0	4.7	-44.24	152.0	-148.0	216.9	209.2	7.70	28.173		
1,500.0	1,500.0	1,470.2	1,447.6	3.3	5.1	-41.61	173.8	-154.4	237.8	229.5	8.39	28.361		
1,600.0	1,600.0	1,567.5	1,542.1	3.5	5.6	-39.41	195.6	-160.7	259.2	250.2	9.07	28.576		
1,700.0	1,700.0	1,664.7	1,636.6	3.7	6.1	-37.54	217.4	-167.1	280.9	271.2	9.76	28.800		
1,800.0	1,800.0	1,761.9	1,731.2	3.9	6.5	-35.94	239.2	-173.4	302.9	292.5	10.44	29.025		
1,900.0	1,900.0	1,859.1	1,825.6	4.1	7.0	81.92	261.0	-179.7	324.8	315.8	8.97	36.206		
2,000.0	1,999.8	1,956.0	1,919.8	4.3	7.5	83.53	282.7	-186.1	346.6	337.2	9.40	36.885		
2,100.0	2,099.5	2,052.5	2,013.7	4.5	7.9	85.44	304.3	-192.4	368.5	358.7	9.82	37.533		
2,200.0	2,198.7	2,148.4	2,107.0	4.7	8.4	87.56	325.9	-198.6	390.8	380.5	10.24	38.145		
2,300.0	2,297.7	2,244.1	2,200.0	5.0	8.9	90.11	347.3	-204.9	413.8	403.1	10.68	38.755		
2,400.0	2,396.7	2,339.8	2,293.0	5.2	9.3	92.41	368.8	-211.1	437.5	426.4	11.13	39.295		
2,500.0	2,495.7	2,435.5	2,386.1	5.5	9.8	94.47	390.2	-217.4	461.9	450.2	11.61	39.770		
2,600.0	2,594.7	2,531.1	2,479.1	5.8	10.3	96.34	411.7	-223.6	486.7	474.6	12.11	40.187		
2,700.0	2,693.7	2,626.8	2,572.1	6.0	10.7	98.02	433.1	-229.9	512.0	499.4	12.63	40.552		
2,800.0	2,792.7	2,722.5	2,665.2	6.3	11.2	99.55	454.6	-236.1	537.7	524.6	13.16	40.873		
2,900.0	2,891.7	2,818.2	2,758.2	6.6	11.7	100.94	476.1	-242.4	563.7	550.0	13.70	41.157		
3,000.0	2,990.7	2,913.8	2,851.2	6.9	12.1	102.21	497.5	-248.6	590.1	575.8	14.25	41.408		
3,100.0	3,089.7	3,009.5	2,944.2	7.2	12.6	103.37	519.0	-254.9	616.6	601.8	14.81	41.631		
3,200.0	3,188.7	3,105.2	3,037.3	7.5	13.1	104.44	540.4	-261.1	643.4	628.0	15.38	41.832		
3,300.0	3,287.7	3,200.9	3,130.3	7.8	13.5	105.42	561.9	-267.4	670.4	654.4	15.96	42.012		
3,400.0	3,386.8	3,296.5	3,223.3	8.1	14.0	106.33	583.3	-273.6	697.5	681.0	16.54	42.175		
3,500.0	3,485.8	3,392.2	3,316.3	8.5	14.5	107.17	604.8	-279.9	724.8	707.7	17.13	42.324		
3,600.0	3,584.8	3,487.9	3,409.4	8.8	14.9	107.94	626.2	-286.1	752.2	734.5	17.72	42.460		
3,700.0	3,683.8	3,583.5	3,502.4	9.1	15.4	108.67	647.7	-292.4	779.8	761.5	18.31	42.584		
3,800.0	3,782.8	3,679.2	3,595.4	9.4	15.9	109.34	669.2	-298.6	807.5	788.5	18.91	42.699		
3,900.0	3,881.8	3,774.9	3,688.4	9.8	16.4	109.98	690.6	-304.9	835.2	815.7	19.51	42.806		
4,000.0	3,980.8	3,870.6	3,781.5	10.1	16.8	110.57	712.1	-311.1	863.1	842.9	20.12	42.905		
4,100.0	4,079.8	3,966.2	3,874.5	10.4	17.3	111.12	733.5	-317.4	891.0	870.3	20.72	42.997		
4,200.0	4,178.8	4,061.9	3,967.5	10.8	17.8	111.64	755.0	-323.6	919.0	897.7	21.33	43.083		
4,300.0	4,277.8	4,157.6	4,060.6	11.1	18.2	112.13	776.4	-329.9	947.0	925.1	21.94	43.164		
4,400.0	4,376.8	4,253.3	4,153.6	11.4	18.7	112.59	797.9	-336.1	975.2	952.6	22.55	43.241		

<b>Company:</b>	Synergy Resources	<b>Local Co-ordinate Reference:</b>	Well SRC Union 12HZN
<b>Project:</b>	SEC.5-T2N-R68W	<b>TVD Reference:</b>	WELL @ 4978.0ft (RKB - 13')
<b>Reference Site:</b>	SRC Union Pad Sec.5-T2N-R68W	<b>MD Reference:</b>	WELL @ 4978.0ft (RKB - 13')
<b>Site Error:</b>	0.0ft	<b>North Reference:</b>	True
<b>Reference Well:</b>	SRC Union 12HZN	<b>Survey Calculation Method:</b>	Minimum Curvature
<b>Well Error:</b>	0.0ft	<b>Output errors are at</b>	2.00 sigma
<b>Reference Wellbore</b>	Wellbore #1	<b>Database:</b>	Landmark
<b>Reference Design:</b>	Plan #2 (4-08-13)	<b>Offset TVD Reference:</b>	Offset Datum

Offset Design													Offset Site Error:	0.0 ft
Survey Program: 0-MWD													Offset Well Error:	0.0 ft
Reference		Offset		Semi Major Axis			Distance							Warning
Measured Depth (ft)	Vertical Depth (ft)	Measured Depth (ft)	Vertical Depth (ft)	Reference (ft)	Offset (ft)	Highside Toolface (°)	Offset Wellbore Centre +N/-S (ft)	+E/-W (ft)	Between Centres (ft)	Between Ellipses (ft)	Minimum Separation (ft)	Separation Factor		
0.0	0.0	0.0	0.0	0.0	0.0	-111.09	-28.8	-74.6	80.0					
100.0	100.0	98.0	98.0	0.1	0.1	-111.09	-28.8	-74.6	80.0	79.8	0.22	359.397		
200.0	200.0	198.0	198.0	0.3	0.3	-111.09	-28.8	-74.6	80.0	79.3	0.67	119.399		
300.0	300.0	298.0	298.0	0.6	0.6	-111.09	-28.8	-74.6	80.0	78.9	1.12	71.448		
400.0	400.0	398.0	398.0	0.8	0.8	-111.09	-28.8	-74.6	80.0	78.4	1.57	50.976		
500.0	500.0	498.0	498.0	1.0	1.0	-111.09	-28.8	-74.6	80.0	78.0	2.02	39.622		
600.0	600.0	598.0	598.0	1.2	1.2	-111.09	-28.8	-74.6	80.0	77.5	2.47	32.405		
700.0	700.0	698.1	698.0	1.5	1.5	-109.89	-27.2	-75.2	79.9	77.0	2.92	27.393		
731.3	731.3	729.4	729.3	1.5	1.5	-109.00	-26.0	-75.6	79.9	76.9	3.06	26.117 CC		
800.0	800.0	797.9	797.7	1.7	1.7	-106.19	-22.3	-76.8	80.0	76.6	3.37	23.734 ES		
900.0	900.0	897.2	896.7	1.9	1.9	-100.12	-14.2	-79.6	80.9	77.1	3.83	21.125		
1,000.0	1,000.0	995.9	994.6	2.1	2.2	-92.03	-3.0	-83.5	83.6	79.3	4.30	19.450		
1,100.0	1,100.0	1,093.6	1,091.1	2.4	2.5	-82.70	11.3	-88.4	89.4	84.6	4.79	18.647		
1,200.0	1,200.0	1,190.1	1,186.0	2.6	2.8	-73.19	28.5	-94.3	99.3	93.9	5.33	18.615 SF		
1,300.0	1,300.0	1,287.6	1,281.3	2.8	3.1	-64.68	47.8	-101.0	113.0	107.0	5.92	19.091		
1,400.0	1,400.0	1,385.4	1,376.9	3.0	3.5	-58.04	67.2	-107.6	128.6	122.1	6.53	19.709		
1,500.0	1,500.0	1,483.1	1,472.5	3.3	3.9	-52.87	86.6	-114.3	145.6	138.5	7.15	20.372		
1,600.0	1,600.0	1,580.9	1,568.1	3.5	4.3	-48.79	105.9	-121.0	163.6	155.8	7.78	21.032		
1,700.0	1,700.0	1,678.7	1,663.7	3.7	4.7	-45.53	125.3	-127.7	182.2	173.8	8.41	21.662		
1,800.0	1,800.0	1,776.5	1,759.3	3.9	5.1	-42.87	144.7	-134.3	201.2	192.2	9.04	22.253		
1,900.0	1,900.0	1,874.2	1,854.8	4.1	5.5	76.01	164.1	-141.0	220.2	211.6	8.61	25.580		
2,000.0	1,999.8	1,971.7	1,950.1	4.3	6.0	78.68	183.4	-147.7	238.9	229.9	9.03	26.464		
2,100.0	2,099.5	2,068.8	2,045.1	4.5	6.4	81.65	202.7	-154.3	257.7	248.2	9.45	27.277		
2,200.0	2,198.7	2,165.5	2,139.7	4.7	6.8	84.86	221.9	-160.9	276.9	267.0	9.88	28.038		
2,300.0	2,297.7	2,261.9	2,233.9	5.0	7.2	88.32	241.0	-167.5	297.0	286.7	10.32	28.780		
2,400.0	2,396.7	2,358.3	2,328.2	5.2	7.6	91.37	260.1	-174.1	318.0	307.2	10.79	29.482		
2,500.0	2,495.7	2,454.8	2,422.5	5.5	8.1	94.04	279.2	-180.6	339.8	328.6	11.28	30.137		
2,600.0	2,594.7	2,551.2	2,516.7	5.8	8.5	96.39	298.3	-187.2	362.3	350.5	11.78	30.744		
2,700.0	2,693.7	2,647.6	2,611.0	6.0	8.9	98.47	317.5	-193.8	385.2	372.9	12.31	31.303		
2,800.0	2,792.7	2,744.0	2,705.3	6.3	9.3	100.32	336.6	-200.4	408.6	395.8	12.84	31.818		
2,900.0	2,891.7	2,840.4	2,799.5	6.6	9.8	101.97	355.7	-207.0	432.4	419.0	13.39	32.291		
3,000.0	2,990.7	2,936.8	2,893.8	6.9	10.2	103.44	374.8	-213.5	456.5	442.5	13.95	32.728		
3,100.0	3,089.7	3,033.2	2,988.1	7.2	10.6	104.77	393.9	-220.1	480.8	466.3	14.51	33.130		
3,200.0	3,188.7	3,129.6	3,082.3	7.5	11.1	105.98	413.1	-226.7	505.4	490.3	15.08	33.503		
3,300.0	3,287.7	3,226.0	3,176.6	7.8	11.5	107.07	432.2	-233.3	530.1	514.5	15.66	33.848		
3,400.0	3,386.8	3,322.5	3,270.9	8.1	11.9	108.07	451.3	-239.9	555.0	538.8	16.24	34.168		
3,500.0	3,485.8	3,418.9	3,365.2	8.5	12.3	108.98	470.4	-246.5	580.1	563.3	16.83	34.466		
3,600.0	3,584.8	3,515.3	3,459.4	8.8	12.8	109.81	489.5	-253.0	605.3	587.9	17.42	34.744		
3,700.0	3,683.8	3,611.7	3,553.7	9.1	13.2	110.58	508.6	-259.6	630.6	612.6	18.01	35.004		
3,800.0	3,782.8	3,708.1	3,648.0	9.4	13.6	111.29	527.8	-266.2	656.0	637.4	18.61	35.247		
3,900.0	3,881.8	3,804.5	3,742.2	9.8	14.1	111.95	546.9	-272.8	681.5	662.3	19.21	35.475		
4,000.0	3,980.8	3,900.9	3,836.5	10.1	14.5	112.56	566.0	-279.4	707.0	687.2	19.81	35.690		
4,100.0	4,079.8	3,997.3	3,930.8	10.4	14.9	113.13	585.1	-285.9	732.7	712.3	20.41	35.892		
4,200.0	4,178.8	4,093.7	4,025.0	10.8	15.4	113.66	604.2	-292.5	758.4	737.4	21.02	36.082		
4,300.0	4,277.8	4,190.2	4,119.3	11.1	15.8	114.15	623.3	-299.1	784.1	762.5	21.62	36.262		
4,400.0	4,376.8	4,286.6	4,213.6	11.4	16.2	114.62	642.5	-305.7	809.9	787.7	22.23	36.432		
4,500.0	4,475.8	4,383.0	4,307.8	11.8	16.7	115.05	661.6	-312.3	835.8	812.9	22.84	36.593		
4,600.0	4,574.8	4,479.4	4,402.1	12.1	17.1	115.46	680.7	-318.8	861.7	838.2	23.45	36.746		
4,700.0	4,673.8	4,575.8	4,496.4	12.4	17.5	115.85	699.8	-325.4	887.6	863.6	24.06	36.891		
4,800.0	4,772.8	4,672.2	4,590.6	12.8	17.9	116.21	718.9	-332.0	913.6	888.9	24.67	37.029		
4,900.0	4,871.8	4,768.6	4,684.9	13.1	18.4	116.55	738.1	-338.6	939.6	914.3	25.28	37.160		
5,000.0	4,970.8	4,865.0	4,779.2	13.5	18.8	116.88	757.2	-345.2	965.6	939.7	25.90	37.286		

CC - Min centre to center distance or convergent point, SF - min separation factor, ES - min ellipse separation

<b>Company:</b>	Synergy Resources	<b>Local Co-ordinate Reference:</b>	Well SRC Union 12HZN
<b>Project:</b>	SEC.5-T2N-R68W	<b>TVD Reference:</b>	WELL @ 4978.0ft (RKB - 13')
<b>Reference Site:</b>	SRC Union Pad Sec.5-T2N-R68W	<b>MD Reference:</b>	WELL @ 4978.0ft (RKB - 13')
<b>Site Error:</b>	0.0ft	<b>North Reference:</b>	True
<b>Reference Well:</b>	SRC Union 12HZN	<b>Survey Calculation Method:</b>	Minimum Curvature
<b>Well Error:</b>	0.0ft	<b>Output errors are at</b>	2.00 sigma
<b>Reference Wellbore</b>	Wellbore #1	<b>Database:</b>	Landmark
<b>Reference Design:</b>	Plan #2 (4-08-13)	<b>Offset TVD Reference:</b>	Offset Datum

<b>Offset Design</b>												<b>Offset Site Error:</b>	0.0 ft
SRC Union Pad Sec.5-T2N-R68W - SRC Union 11HZN - Wellbore #1 - Plan #2 (4-08-13)												<b>Offset Well Error:</b>	0.0 ft
Survey Program: 0-MWD													
Reference		Offset		Semi Major Axis			Distance						
Measured Depth	Vertical Depth	Measured Depth	Vertical Depth	Reference	Offset	Highside Toolface	Offset Wellbore Centre	Between Centres	Between Ellipses	Minimum Separation	Separation Factor	Warning	
(ft)	(ft)	(ft)	(ft)	(ft)	(ft)	(°)	+N/-S (ft)	+E/-W (ft)	(ft)	(ft)	(ft)		
5,100.0	5,069.8	4,961.4	4,873.4	13.8	19.2	117.19	776.3	-351.7	991.7	965.2	26.51	37.405	



<b>Company:</b>	Synergy Resources	<b>Local Co-ordinate Reference:</b>	Well SRC Union 12HZN
<b>Project:</b>	SEC.5-T2N-R68W	<b>TVD Reference:</b>	WELL @ 4978.0ft (RKB - 13')
<b>Reference Site:</b>	SRC Union Pad Sec.5-T2N-R68W	<b>MD Reference:</b>	WELL @ 4978.0ft (RKB - 13')
<b>Site Error:</b>	0.0ft	<b>North Reference:</b>	True
<b>Reference Well:</b>	SRC Union 12HZN	<b>Survey Calculation Method:</b>	Minimum Curvature
<b>Well Error:</b>	0.0ft	<b>Output errors are at</b>	2.00 sigma
<b>Reference Wellbore</b>	Wellbore #1	<b>Database:</b>	Landmark
<b>Reference Design:</b>	Plan #2 (4-08-13)	<b>Offset TVD Reference:</b>	Offset Datum

Offset Design													Offset Site Error:	0.0 ft
Survey Program: 0-MWD													Offset Well Error:	0.0 ft
Reference		Offset		Semi Major Axis			Distance							Warning
Measured Depth (ft)	Vertical Depth (ft)	Measured Depth (ft)	Vertical Depth (ft)	Reference (ft)	Offset (ft)	Highside Toolface (°)	Offset Wellbore Centre +N/-S (ft)	+E/-W (ft)	Between Centres (ft)	Between Ellipses (ft)	Minimum Separation (ft)	Separation Factor		
0.0	0.0	0.0	0.0	0.0	0.0	68.59	14.6	37.2	39.9					
100.0	100.0	100.0	100.0	0.1	0.1	68.59	14.6	37.2	39.9	39.7	0.22	177.629		
200.0	200.0	200.0	200.0	0.3	0.3	68.59	14.6	37.2	39.9	39.3	0.67	59.210		
300.0	300.0	300.0	300.0	0.6	0.6	68.59	14.6	37.2	39.9	38.8	1.12	35.526		
400.0	400.0	400.2	400.2	0.8	0.8	69.77	13.7	37.2	39.6	38.1	1.55	25.581		
500.0	500.0	500.4	500.4	1.0	1.0	73.41	11.1	37.2	38.8	36.8	1.97	19.730		
600.0	600.0	600.5	600.4	1.2	1.2	79.78	6.7	37.2	37.8	35.4	2.40	15.758		
700.0	700.0	700.4	700.1	1.5	1.4	87.73	1.5	37.2	37.2	34.4	2.84	13.121		
728.2	728.2	728.5	728.2	1.5	1.5	90.00	0.0	37.2	37.2	34.2	2.96	12.557 CC		
800.0	800.0	800.2	799.8	1.7	1.6	95.77	-3.8	37.2	37.4	34.1	3.28	11.390 ES		
900.0	900.0	900.0	899.5	1.9	1.9	103.58	-9.0	37.2	38.2	34.5	3.73	10.244		
1,000.0	1,000.0	999.4	998.7	2.1	2.1	110.19	-14.0	38.0	40.5	36.3	4.18	9.684		
1,100.0	1,100.0	1,098.6	1,097.8	2.4	2.3	114.63	-18.6	40.5	44.6	40.0	4.63	9.630		
1,200.0	1,200.0	1,197.8	1,196.8	2.6	2.5	117.00	-22.8	44.7	50.3	45.2	5.09	9.876		
1,300.0	1,300.0	1,296.9	1,295.6	2.8	2.8	117.73	-26.6	50.5	57.3	51.7	5.55	10.316		
1,400.0	1,400.0	1,395.7	1,394.1	3.0	3.0	117.30	-29.9	58.0	65.6	59.5	6.02	10.896		
1,500.0	1,500.0	1,494.3	1,492.3	3.3	3.2	116.12	-32.9	67.1	75.2	68.7	6.49	11.585		
1,600.0	1,600.0	1,593.8	1,591.2	3.5	3.5	114.85	-35.7	77.1	85.5	78.5	6.97	12.260		
1,700.0	1,700.0	1,693.2	1,690.1	3.7	3.8	113.85	-38.5	87.2	95.8	88.4	7.46	12.846		
1,800.0	1,800.0	1,792.7	1,789.0	3.9	4.0	113.04	-41.3	97.2	106.2	98.2	7.95	13.356		
1,900.0	1,900.0	1,892.0	1,887.7	4.1	4.3	-131.48	-44.1	107.2	117.7	109.5	8.15	14.441		
2,000.0	1,999.8	1,990.9	1,986.1	4.3	4.6	-133.47	-46.9	117.1	131.6	123.1	8.56	15.382		
2,100.0	2,099.5	2,089.3	2,084.0	4.5	4.8	-135.96	-49.7	127.0	148.2	139.2	8.97	16.527		
2,200.0	2,198.7	2,187.0	2,181.2	4.7	5.1	-138.68	-52.4	136.9	167.6	158.2	9.38	17.870		
2,300.0	2,297.7	2,284.4	2,278.0	5.0	5.4	-141.40	-55.2	146.7	188.8	179.0	9.82	19.231		
2,400.0	2,396.7	2,381.8	2,374.9	5.2	5.7	-143.58	-57.9	156.5	210.3	200.0	10.26	20.491		
2,500.0	2,495.7	2,479.2	2,471.7	5.5	5.9	-145.36	-60.7	166.3	232.1	221.4	10.72	21.658		
2,600.0	2,594.7	2,576.5	2,568.5	5.8	6.2	-146.83	-63.4	176.1	254.0	242.9	11.17	22.736		
2,700.0	2,693.7	2,673.9	2,665.4	6.0	6.5	-148.06	-66.2	185.9	276.1	264.5	11.63	23.733		
2,800.0	2,792.7	2,771.3	2,762.2	6.3	6.8	-149.12	-68.9	195.7	298.3	286.2	12.10	24.656		
2,900.0	2,891.7	2,868.6	2,859.1	6.6	7.1	-150.02	-71.7	205.5	320.6	308.0	12.57	25.511		
3,000.0	2,990.7	2,966.0	2,955.9	6.9	7.4	-150.82	-74.4	215.3	342.9	329.9	13.04	26.305		
3,100.0	3,089.7	3,063.4	3,052.7	7.2	7.6	-151.51	-77.1	225.1	365.3	351.8	13.51	27.043		
3,200.0	3,188.7	3,160.8	3,149.6	7.5	7.9	-152.12	-79.9	234.9	387.7	373.7	13.98	27.730		
3,300.0	3,287.7	3,258.1	3,246.4	7.8	8.2	-152.67	-82.6	244.7	410.2	395.7	14.46	28.372		
3,400.0	3,386.8	3,355.5	3,343.2	8.1	8.5	-153.16	-85.4	254.5	432.7	417.8	14.94	28.971		
3,500.0	3,485.8	3,452.9	3,440.1	8.5	8.8	-153.60	-88.1	264.3	455.2	439.8	15.41	29.532		
3,600.0	3,584.8	3,550.2	3,536.9	8.8	9.1	-154.00	-90.9	274.1	477.8	461.9	15.89	30.059		
3,700.0	3,683.8	3,647.6	3,633.8	9.1	9.4	-154.36	-93.6	283.9	500.3	484.0	16.38	30.553		
3,800.0	3,782.8	3,745.0	3,730.6	9.4	9.7	-154.70	-96.3	293.7	522.9	506.1	16.86	31.018		
3,900.0	3,881.8	3,842.4	3,827.4	9.8	9.9	-155.00	-99.1	303.5	545.5	528.2	17.34	31.456		
4,000.0	3,980.8	3,942.2	3,926.7	10.1	10.2	-155.29	-101.9	313.5	568.1	550.3	17.83	31.869		
4,100.0	4,079.8	4,050.2	4,034.3	10.4	10.5	-155.62	-104.5	323.0	589.5	571.2	18.29	32.224		
4,200.0	4,178.8	4,159.0	4,142.8	10.8	10.7	-155.99	-106.6	330.5	609.1	590.3	18.74	32.495		
4,300.0	4,277.8	4,268.5	4,252.1	11.1	10.9	-156.41	-108.2	336.1	626.9	607.7	19.19	32.664		
4,400.0	4,376.8	4,378.6	4,362.2	11.4	11.1	-156.86	-109.2	339.6	643.0	623.4	19.64	32.739		
4,500.0	4,475.8	4,489.3	4,472.9	11.8	11.3	-157.35	-109.6	341.2	657.3	637.3	20.09	32.726		
4,600.0	4,574.8	4,591.2	4,574.8	12.1	11.5	-157.82	-109.6	341.2	670.4	649.9	20.53	32.658		
4,700.0	4,673.8	4,690.2	4,673.8	12.4	11.6	-158.27	-109.6	341.2	683.5	662.5	20.97	32.600		
4,800.0	4,772.8	4,789.2	4,772.8	12.8	11.8	-158.70	-109.6	341.2	696.6	675.2	21.40	32.547		
4,900.0	4,871.8	4,888.2	4,871.8	13.1	12.0	-159.11	-109.6	341.2	709.8	687.9	21.84	32.496		
5,000.0	4,970.8	4,987.2	4,970.8	13.5	12.2	-159.51	-109.6	341.2	723.0	700.7	22.28	32.447		

CC - Min centre to center distance or convergent point, SF - min separation factor, ES - min ellipse separation

<b>Company:</b>	Synergy Resources	<b>Local Co-ordinate Reference:</b>	Well SRC Union 12HZN
<b>Project:</b>	SEC.5-T2N-R68W	<b>TVD Reference:</b>	WELL @ 4978.0ft (RKB - 13')
<b>Reference Site:</b>	SRC Union Pad Sec.5-T2N-R68W	<b>MD Reference:</b>	WELL @ 4978.0ft (RKB - 13')
<b>Site Error:</b>	0.0ft	<b>North Reference:</b>	True
<b>Reference Well:</b>	SRC Union 12HZN	<b>Survey Calculation Method:</b>	Minimum Curvature
<b>Well Error:</b>	0.0ft	<b>Output errors are at</b>	2.00 sigma
<b>Reference Wellbore</b>	Wellbore #1	<b>Database:</b>	Landmark
<b>Reference Design:</b>	Plan #2 (4-08-13)	<b>Offset TVD Reference:</b>	Offset Datum

Offset Design												Offset Site Error:	0.0 ft
Survey Program: 0-MWD												Offset Well Error:	0.0 ft
Reference		Offset		Semi Major Axis			Distance						Warning
Measured Depth (ft)	Vertical Depth (ft)	Measured Depth (ft)	Vertical Depth (ft)	Reference (ft)	Offset (ft)	Highside Toolface (°)	Offset Wellbore Centre +N/-S (ft)	+E/-W (ft)	Between Centres (ft)	Between Ellipses (ft)	Minimum Separation (ft)	Separation Factor	
5,100.0	5,069.8	5,086.2	5,069.8	13.8	12.3	-159.89	-109.6	341.2	736.2	713.5	22.72	32.401	
5,200.0	5,168.8	5,185.2	5,168.8	14.1	12.5	-160.26	-109.6	341.2	749.4	726.3	23.16	32.357	
5,300.0	5,267.8	5,284.3	5,267.8	14.5	12.7	-160.62	-109.6	341.2	762.7	739.1	23.60	32.315	
5,400.0	5,366.8	5,383.3	5,366.8	14.8	12.9	-160.96	-109.6	341.2	776.0	752.0	24.04	32.275	
5,500.0	5,465.9	5,482.4	5,465.9	15.1	13.1	-161.33	-109.6	341.2	788.6	764.0	24.52	32.163	
5,600.0	5,565.4	5,581.9	5,565.4	15.4	13.2	-161.62	-109.6	341.2	798.0	773.0	24.96	31.967	
5,700.0	5,665.2	5,681.7	5,665.2	15.6	13.4	-161.80	-109.6	341.2	804.1	778.7	25.38	31.682	
5,800.0	5,765.2	5,781.6	5,765.2	15.7	13.6	-161.88	-109.6	341.2	806.9	781.1	25.77	31.313	
5,900.0	5,865.2	5,881.6	5,865.2	15.9	13.8	81.50	-109.6	341.2	807.1	778.0	29.09	27.742	
6,000.0	5,965.2	5,981.6	5,965.2	16.1	14.0	81.50	-109.6	341.2	807.1	777.6	29.46	27.399	
6,100.0	6,065.2	6,081.6	6,065.2	16.2	14.2	81.50	-109.6	341.2	807.1	777.3	29.82	27.063	
6,200.0	6,165.2	6,181.6	6,165.2	16.4	14.4	81.50	-109.6	341.2	807.1	776.9	30.19	26.733	
6,300.0	6,265.2	6,281.6	6,265.2	16.6	14.6	81.50	-109.6	341.2	807.1	776.5	30.56	26.409	
6,400.0	6,365.2	6,381.6	6,365.2	16.7	14.8	81.50	-109.6	341.2	807.1	776.2	30.93	26.091	
6,500.0	6,465.2	6,481.6	6,465.2	16.9	15.0	81.50	-109.6	341.2	807.1	775.8	31.31	25.779	
6,600.0	6,564.8	6,581.2	6,564.8	17.0	15.2	-9.20	-109.6	341.2	800.1	771.5	28.56	28.016	
6,700.0	6,661.3	6,677.7	6,661.3	17.0	15.4	-10.00	-109.6	341.2	774.6	746.9	27.75	27.917	
6,800.0	6,751.0	6,767.4	6,751.0	16.9	15.5	-11.61	-109.6	341.2	731.6	705.3	26.21	27.908	
6,900.0	6,830.8	6,847.2	6,830.8	16.8	15.7	-14.53	-109.6	341.2	672.5	648.3	24.22	27.770	
7,000.0	6,897.7	6,914.1	6,897.7	16.8	15.8	-19.88	-109.6	341.2	599.8	577.4	22.42	26.759	
7,100.0	6,949.1	6,965.6	6,949.1	17.0	15.9	-30.32	-109.6	341.2	516.5	493.9	22.53	22.920	
7,200.0	6,983.3	6,999.8	6,983.3	17.5	16.0	-51.02	-109.6	341.2	426.1	398.6	27.50	15.497	
7,300.0	6,999.0	7,015.4	6,999.0	18.5	16.0	-81.44	-109.6	341.2	333.2	299.3	33.92	9.824	
7,400.0	7,000.0	7,016.4	7,000.0	19.8	16.0	-90.00	-109.6	341.2	243.7	208.0	35.68	6.830	
7,500.0	7,000.0	7,016.4	7,000.0	21.4	16.0	-90.00	-109.6	341.2	166.4	129.1	37.30	4.461	
7,600.0	7,000.0	7,016.4	7,000.0	23.3	16.0	-90.00	-109.6	341.2	126.5	87.4	39.16	3.232	
7,608.4	7,000.0	7,016.4	7,000.0	23.5	16.0	-90.00	-109.6	341.2	126.3	86.9	39.33	3.211 SF	
7,700.0	7,000.0	7,016.4	7,000.0	25.3	16.0	-90.00	-109.6	341.2	156.0	114.8	41.19	3.787	
7,800.0	7,000.0	7,016.4	7,000.0	27.5	16.0	-90.00	-109.6	341.2	229.4	186.1	43.35	5.293	
7,900.0	7,000.0	7,016.4	7,000.0	29.8	16.0	-90.00	-109.6	341.2	317.7	272.1	45.63	6.964	
8,000.0	7,000.0	7,016.4	7,000.0	32.1	16.0	-90.00	-109.6	341.2	411.4	363.5	47.98	8.574	
8,100.0	7,000.0	7,016.4	7,000.0	34.6	16.0	-90.00	-109.6	341.2	507.5	457.1	50.41	10.068	
8,200.0	7,000.0	7,016.4	7,000.0	37.0	16.0	-90.00	-109.6	341.2	604.9	552.0	52.89	11.438	
8,300.0	7,000.0	7,016.4	7,000.0	39.6	16.0	-90.00	-109.6	341.2	703.0	647.6	55.41	12.687	
8,400.0	7,000.0	7,016.4	7,000.0	42.1	16.0	-90.00	-109.6	341.2	801.6	743.6	57.97	13.828	
8,500.0	7,000.0	7,016.4	7,000.0	44.7	16.0	-90.00	-109.6	341.2	900.5	839.9	60.56	14.870	
8,600.0	7,000.0	7,016.4	7,000.0	47.3	16.0	-90.00	-109.6	341.2	999.6	936.4	63.17	15.824	

<b>Company:</b>	Synergy Resources	<b>Local Co-ordinate Reference:</b>	Well SRC Union 12HZN
<b>Project:</b>	SEC.5-T2N-R68W	<b>TVD Reference:</b>	WELL @ 4978.0ft (RKB - 13')
<b>Reference Site:</b>	SRC Union Pad Sec.5-T2N-R68W	<b>MD Reference:</b>	WELL @ 4978.0ft (RKB - 13')
<b>Site Error:</b>	0.0ft	<b>North Reference:</b>	True
<b>Reference Well:</b>	SRC Union 12HZN	<b>Survey Calculation Method:</b>	Minimum Curvature
<b>Well Error:</b>	0.0ft	<b>Output errors are at</b>	2.00 sigma
<b>Reference Wellbore</b>	Wellbore #1	<b>Database:</b>	Landmark
<b>Reference Design:</b>	Plan #2 (4-08-13)	<b>Offset TVD Reference:</b>	Offset Datum

Offset Design													Offset Site Error:	0.0 ft
Survey Program: 0-MWD													Offset Well Error:	0.0 ft
Reference		Offset		Semi Major Axis			Distance							Warning
Measured Depth (ft)	Vertical Depth (ft)	Measured Depth (ft)	Vertical Depth (ft)	Reference (ft)	Offset (ft)	Highside Toolface (°)	Offset Wellbore Centre +N/-S (ft)	+E/-W (ft)	Between Centres (ft)	Between Ellipses (ft)	Minimum Separation (ft)	Separation Factor		
0.0	0.0	0.0	0.0	0.0	0.0	-110.94	-21.5	-56.2	60.2					
100.0	100.0	99.0	99.0	0.1	0.1	-110.94	-21.5	-56.2	60.1	59.9	0.22	268.929		
200.0	200.0	199.0	199.0	0.3	0.3	-110.94	-21.5	-56.2	60.1	59.5	0.67	89.494		
300.0	300.0	299.0	299.0	0.6	0.6	-110.94	-21.5	-56.2	60.1	59.0	1.12	53.625		
400.0	400.0	399.0	399.0	0.8	0.8	-110.94	-21.5	-56.2	60.1	58.6	1.57	38.281		
500.0	500.0	499.0	499.0	1.0	1.0	-110.94	-21.5	-56.2	60.1	58.1	2.02	29.765		
600.0	600.0	599.0	599.0	1.2	1.2	-110.94	-21.5	-56.2	60.1	57.7	2.47	24.348		
700.0	700.0	699.0	699.0	1.5	1.5	-110.94	-21.5	-56.2	60.1	57.2	2.92	20.599		
800.0	800.0	799.0	799.0	1.7	1.7	-110.94	-21.5	-56.2	60.1	56.8	3.37	17.851		
900.0	900.0	899.0	899.0	1.9	1.9	-110.94	-21.5	-56.2	60.1	56.3	3.82	15.750		
1,000.0	1,000.0	999.0	999.0	2.1	2.1	-110.94	-21.5	-56.2	60.1	55.9	4.27	14.091		
1,100.0	1,100.0	1,099.0	1,099.0	2.4	2.4	-110.94	-21.5	-56.2	60.1	55.4	4.72	12.748		
1,200.0	1,200.0	1,199.0	1,199.0	2.6	2.6	-110.94	-21.5	-56.2	60.1	55.0	5.17	11.639		
1,300.0	1,300.0	1,299.0	1,299.0	2.8	2.8	-110.94	-21.5	-56.2	60.1	54.5	5.62	10.708		
1,400.0	1,400.0	1,399.0	1,399.0	3.0	3.0	-110.94	-21.5	-56.2	60.1	54.1	6.07	9.914		
1,500.0	1,500.0	1,499.0	1,499.0	3.3	3.3	-110.94	-21.5	-56.2	60.1	53.6	6.52	9.230 CC, ES		
1,600.0	1,600.0	1,597.0	1,597.0	3.5	3.5	-111.43	-22.5	-57.4	61.7	54.8	6.94	8.897		
1,700.0	1,700.0	1,694.8	1,694.7	3.7	3.6	-112.77	-25.7	-61.3	66.6	59.2	7.35	9.065		
1,800.0	1,800.0	1,792.2	1,791.6	3.9	3.8	-114.61	-31.0	-67.6	74.8	67.0	7.76	9.634		
1,900.0	1,900.0	1,889.0	1,887.8	4.1	4.0	0.01	-38.3	-76.5	84.5	76.4	8.14	10.388		
2,000.0	1,999.8	1,987.9	1,985.7	4.3	4.3	-1.94	-47.3	-87.3	93.3	84.8	8.51	10.964		
2,100.0	2,099.5	2,087.7	2,084.5	4.5	4.5	-3.70	-56.4	-98.3	98.7	89.8	8.88	11.119		
2,200.0	2,198.7	2,187.7	2,183.4	4.7	4.8	-5.45	-65.5	-109.4	100.7	91.5	9.25	10.894		
2,300.0	2,297.7	2,287.6	2,282.3	5.0	5.1	-7.28	-74.6	-120.4	101.0	91.3	9.66	10.458		
2,400.0	2,396.7	2,387.6	2,381.2	5.2	5.3	-9.09	-83.8	-131.4	101.3	91.3	10.08	10.057		
2,500.0	2,495.7	2,487.5	2,480.1	5.5	5.6	-10.89	-92.9	-142.5	101.8	91.3	10.50	9.690		
2,600.0	2,594.7	2,587.4	2,579.1	5.8	5.9	-12.67	-102.0	-153.5	102.3	91.4	10.94	9.353		
2,700.0	2,693.7	2,687.4	2,678.0	6.0	6.2	-14.44	-111.2	-164.5	103.0	91.6	11.38	9.045		
2,800.0	2,792.7	2,787.3	2,776.9	6.3	6.5	-16.18	-120.3	-175.5	103.7	91.9	11.84	8.761		
2,900.0	2,891.7	2,887.3	2,875.8	6.6	6.9	-17.89	-129.4	-186.6	104.5	92.2	12.30	8.499		
3,000.0	2,990.7	2,987.2	2,974.7	6.9	7.2	-19.57	-138.5	-197.6	105.5	92.7	12.77	8.258		
3,100.0	3,089.7	3,087.2	3,073.7	7.2	7.5	-21.22	-147.7	-208.6	106.5	93.2	13.25	8.035		
3,200.0	3,188.7	3,187.1	3,172.6	7.5	7.8	-22.85	-156.8	-219.7	107.6	93.8	13.74	7.827		
3,300.0	3,287.7	3,287.1	3,271.5	7.8	8.2	-24.43	-165.9	-230.7	108.8	94.5	14.24	7.635		
3,400.0	3,386.8	3,387.0	3,370.4	8.1	8.5	-25.98	-175.0	-241.7	110.0	95.3	14.76	7.456		
3,500.0	3,485.8	3,487.0	3,469.3	8.5	8.8	-27.50	-184.2	-252.8	111.4	96.1	15.28	7.289		
3,600.0	3,584.8	3,586.9	3,568.2	8.8	9.2	-28.98	-193.3	-263.8	112.8	97.0	15.81	7.133		
3,700.0	3,683.8	3,686.9	3,667.2	9.1	9.5	-30.42	-202.4	-274.8	114.3	97.9	16.36	6.987		
3,800.0	3,782.8	3,786.8	3,766.1	9.4	9.8	-31.82	-211.5	-285.8	115.9	98.9	16.91	6.851		
3,900.0	3,881.8	3,886.8	3,865.0	9.8	10.2	-33.18	-220.7	-296.9	117.5	100.0	17.48	6.723		
4,000.0	3,980.8	3,986.7	3,963.9	10.1	10.5	-34.51	-229.8	-307.9	119.2	101.1	18.05	6.603		
4,100.0	4,079.8	4,086.7	4,062.8	10.4	10.9	-35.80	-238.9	-318.9	120.9	102.3	18.63	6.490		
4,200.0	4,178.8	4,186.6	4,161.7	10.8	11.2	-37.05	-248.0	-330.0	122.8	103.5	19.23	6.385		
4,300.0	4,277.8	4,286.6	4,260.7	11.1	11.6	-38.26	-257.2	-341.0	124.6	104.8	19.83	6.286		
4,400.0	4,376.8	4,386.5	4,359.6	11.4	11.9	-39.44	-266.3	-352.0	126.6	106.1	20.44	6.192		
4,500.0	4,475.8	4,486.5	4,458.5	11.8	12.2	-40.58	-275.4	-363.0	128.5	107.5	21.06	6.105		
4,600.0	4,574.8	4,586.4	4,557.4	12.1	12.6	-41.68	-284.6	-374.1	130.6	108.9	21.68	6.022		
4,700.0	4,673.8	4,686.4	4,656.3	12.4	12.9	-42.76	-293.7	-385.1	132.7	110.3	22.32	5.945		
4,800.0	4,772.8	4,786.3	4,755.2	12.8	13.3	-43.79	-302.8	-396.1	134.8	111.8	22.95	5.872		
4,900.0	4,871.8	4,886.3	4,854.2	13.1	13.6	-44.80	-311.9	-407.2	136.9	113.3	23.60	5.803		
5,000.0	4,970.8	4,986.2	4,953.1	13.5	14.0	-45.77	-321.1	-418.2	139.2	114.9	24.25	5.738		
5,100.0	5,069.8	5,086.1	5,052.0	13.8	14.3	-46.72	-330.2	-429.2	141.4	116.5	24.91	5.677		

CC - Min centre to center distance or convergent point, SF - min separation factor, ES - min ellipse separation

<b>Company:</b>	Synergy Resources	<b>Local Co-ordinate Reference:</b>	Well SRC Union 12HZN
<b>Project:</b>	SEC.5-T2N-R68W	<b>TVD Reference:</b>	WELL @ 4978.0ft (RKB - 13')
<b>Reference Site:</b>	SRC Union Pad Sec.5-T2N-R68W	<b>MD Reference:</b>	WELL @ 4978.0ft (RKB - 13')
<b>Site Error:</b>	0.0ft	<b>North Reference:</b>	True
<b>Reference Well:</b>	SRC Union 12HZN	<b>Survey Calculation Method:</b>	Minimum Curvature
<b>Well Error:</b>	0.0ft	<b>Output errors are at</b>	2.00 sigma
<b>Reference Wellbore</b>	Wellbore #1	<b>Database:</b>	Landmark
<b>Reference Design:</b>	Plan #2 (4-08-13)	<b>Offset TVD Reference:</b>	Offset Datum

Offset Design												Offset Site Error:	0.0 ft
Survey Program: 0-MWD												Offset Well Error:	0.0 ft
Reference		Offset		Semi Major Axis			Distance						
Measured Depth (ft)	Vertical Depth (ft)	Measured Depth (ft)	Vertical Depth (ft)	Reference (ft)	Offset (ft)	Highside Toolface (°)	Offset Wellbore Centre +N/-S (ft)	+E/-W (ft)	Between Centres (ft)	Between Ellipses (ft)	Minimum Separation (ft)	Separation Factor	Warning
5,200.0	5,168.8	5,188.7	5,153.6	14.1	14.7	-47.82	-339.1	-440.0	143.1	117.5	25.58	5.595	
5,300.0	5,267.8	5,292.8	5,257.2	14.5	14.9	-49.74	-345.9	-448.2	142.2	115.9	26.29	5.406	
5,400.0	5,366.8	5,396.5	5,360.6	14.8	15.1	-52.65	-350.3	-453.6	138.5	111.4	27.10	5.112	
5,500.0	5,465.9	5,499.7	5,463.7	15.1	15.3	-56.41	-352.3	-456.0	133.1	105.2	27.95	4.762	
5,600.0	5,565.4	5,600.4	5,564.4	15.4	15.4	-59.99	-352.5	-456.2	128.0	99.3	28.70	4.461	
5,700.0	5,665.2	5,700.2	5,664.2	15.6	15.6	-62.49	-352.5	-456.2	124.9	95.6	29.30	4.263	
5,800.0	5,765.2	5,800.1	5,764.2	15.7	15.8	-63.68	-352.5	-456.2	123.6	93.8	29.75	4.154	
5,856.1	5,821.3	5,856.2	5,820.3	15.8	15.8	-63.89	-352.5	-456.2	123.4	93.4	29.96	4.118	
5,900.0	5,865.2	5,900.1	5,864.2	15.9	15.9	179.62	-352.5	-456.2	123.5	95.8	27.70	4.458	
6,000.0	5,965.2	6,000.1	5,964.2	16.1	16.1	179.62	-352.5	-456.2	123.5	95.4	28.07	4.400	
6,100.0	6,065.2	6,100.1	6,064.2	16.2	16.2	179.62	-352.5	-456.2	123.5	95.1	28.43	4.343	
6,200.0	6,165.2	6,200.1	6,164.2	16.4	16.4	179.62	-352.5	-456.2	123.5	94.7	28.80	4.288	
6,300.0	6,265.2	6,300.1	6,264.2	16.6	16.6	179.62	-352.5	-456.2	123.5	94.3	29.17	4.233	
6,400.0	6,365.2	6,400.1	6,364.2	16.7	16.7	179.62	-352.5	-456.2	123.5	93.9	29.55	4.179	
6,500.0	6,465.2	6,500.1	6,464.2	16.9	16.9	179.62	-352.5	-456.2	123.5	93.6	29.92	4.127	
6,548.5	6,513.6	6,548.6	6,512.6	17.0	17.0	90.02	-352.5	-456.2	123.5	91.2	32.28	3.826	
6,600.0	6,564.8	6,599.7	6,563.8	17.0	17.1	92.38	-352.5	-456.2	123.6	91.4	32.22	3.836	
6,700.0	6,661.3	6,696.2	6,660.3	17.0	17.2	103.23	-352.5	-456.2	127.3	96.0	31.33	4.064	
6,800.0	6,751.0	6,786.0	6,750.0	16.9	17.4	117.29	-352.5	-456.2	144.3	114.7	29.62	4.872	
6,900.0	6,830.8	6,879.7	6,843.7	16.8	17.5	130.82	-352.5	-453.3	181.2	154.0	27.18	6.665	
7,000.0	6,897.7	6,998.0	6,958.9	16.8	17.6	141.89	-352.7	-427.7	227.4	203.1	24.28	9.363	
7,100.0	6,949.1	7,144.0	7,088.5	17.0	17.5	149.87	-353.3	-361.6	273.7	252.1	21.51	12.724	
7,200.0	6,983.3	7,330.0	7,218.6	17.5	17.4	155.37	-354.4	-230.1	312.0	292.4	19.58	15.932	
7,300.0	6,999.0	7,559.2	7,303.2	18.5	18.2	158.13	-356.3	-19.0	333.0	313.4	19.63	16.963	
7,400.0	7,000.0	7,709.2	7,310.0	19.8	20.1	158.34	-357.6	130.6	334.6	313.6	20.98	15.953	
7,500.0	7,000.0	7,809.2	7,310.0	21.4	21.8	158.34	-358.5	230.6	334.6	312.4	22.26	15.031	
7,600.0	7,000.0	7,909.2	7,310.0	23.3	23.6	158.33	-359.4	330.6	334.7	310.9	23.74	14.094	
7,700.0	7,000.0	8,009.2	7,310.0	25.3	25.7	158.32	-360.3	430.6	334.7	309.3	25.38	13.184	
7,800.0	7,000.0	8,109.2	7,310.0	27.5	27.9	158.32	-361.2	530.6	334.7	307.5	27.15	12.325	
7,900.0	7,000.0	8,209.2	7,310.0	29.8	30.2	158.31	-362.1	630.6	334.7	305.7	29.03	11.529	
8,000.0	7,000.0	8,309.2	7,310.0	32.1	32.5	158.31	-363.0	730.6	334.7	303.7	31.00	10.799	
8,100.0	7,000.0	8,409.2	7,310.0	34.6	35.0	158.30	-363.9	830.6	334.7	301.7	33.03	10.133	
8,200.0	7,000.0	8,509.2	7,310.0	37.0	37.4	158.30	-364.8	930.6	334.7	299.6	35.13	9.529	
8,300.0	7,000.0	8,609.2	7,310.0	39.6	40.0	158.29	-365.7	1,030.6	334.7	297.5	37.27	8.980	
8,400.0	7,000.0	8,709.2	7,310.0	42.1	42.5	158.29	-366.6	1,130.6	334.8	295.3	39.46	8.483	
8,500.0	7,000.0	8,809.2	7,310.0	44.7	45.1	158.28	-367.5	1,230.6	334.8	293.1	41.69	8.031	
8,600.0	7,000.0	8,909.2	7,310.0	47.3	47.7	158.28	-368.4	1,330.6	334.8	290.8	43.94	7.619	
8,700.0	7,000.0	9,009.2	7,310.0	50.0	50.4	158.27	-369.3	1,430.6	334.8	288.6	46.22	7.244	
8,800.0	7,000.0	9,109.2	7,310.0	52.6	53.0	158.27	-370.2	1,530.6	334.8	286.3	48.52	6.900	
8,900.0	7,000.0	9,209.2	7,310.0	55.3	55.7	158.26	-371.1	1,630.5	334.8	284.0	50.84	6.585	
9,000.0	7,000.0	9,309.2	7,310.0	58.0	58.3	158.25	-372.0	1,730.5	334.8	281.6	53.18	6.296	
9,100.0	7,000.0	9,409.2	7,310.0	60.6	61.0	158.25	-372.9	1,830.5	334.8	279.3	55.53	6.030	
9,200.0	7,000.0	9,509.2	7,310.0	63.3	63.7	158.24	-373.8	1,930.5	334.9	277.0	57.90	5.783	
9,300.0	7,000.0	9,609.2	7,310.0	66.1	66.4	158.24	-374.7	2,030.5	334.9	274.6	60.28	5.555	
9,400.0	7,000.0	9,709.2	7,310.0	68.8	69.2	158.23	-375.6	2,130.5	334.9	272.2	62.67	5.344	
9,500.0	7,000.0	9,809.2	7,310.0	71.5	71.9	158.23	-376.5	2,230.5	334.9	269.8	65.06	5.147	
9,600.0	7,000.0	9,909.2	7,310.0	74.2	74.6	158.22	-377.4	2,330.5	334.9	267.4	67.47	4.964	
9,700.0	7,000.0	10,009.2	7,310.0	77.0	77.4	158.22	-378.3	2,430.5	334.9	265.0	69.88	4.792	
9,800.0	7,000.0	10,109.2	7,310.0	79.7	80.1	158.21	-379.3	2,530.5	334.9	262.6	72.31	4.632	
9,900.0	7,000.0	10,209.2	7,310.0	82.4	82.8	158.21	-380.2	2,630.5	334.9	260.2	74.73	4.482	
10,000.0	7,000.0	10,309.2	7,310.0	85.2	85.6	158.20	-381.1	2,730.5	335.0	257.8	77.17	4.341	
10,100.0	7,000.0	10,409.2	7,310.0	88.0	88.3	158.20	-382.0	2,830.5	335.0	255.4	79.61	4.208	

CC - Min centre to center distance or convergent point, SF - min separation factor, ES - min ellipse separation

<b>Company:</b>	Synergy Resources	<b>Local Co-ordinate Reference:</b>	Well SRC Union 12HZN
<b>Project:</b>	SEC.5-T2N-R68W	<b>TVD Reference:</b>	WELL @ 4978.0ft (RKB - 13')
<b>Reference Site:</b>	SRC Union Pad Sec.5-T2N-R68W	<b>MD Reference:</b>	WELL @ 4978.0ft (RKB - 13')
<b>Site Error:</b>	0.0ft	<b>North Reference:</b>	True
<b>Reference Well:</b>	SRC Union 12HZN	<b>Survey Calculation Method:</b>	Minimum Curvature
<b>Well Error:</b>	0.0ft	<b>Output errors are at</b>	2.00 sigma
<b>Reference Wellbore</b>	Wellbore #1	<b>Database:</b>	Landmark
<b>Reference Design:</b>	Plan #2 (4-08-13)	<b>Offset TVD Reference:</b>	Offset Datum

<b>Offset Design</b> SRC Union Pad Sec.5-T2N-R68W - SRC Union 12HZN - Wellbore #1 - Plan #2 (4-08-13)												<b>Offset Site Error:</b>	0.0 ft
Survey Program: 0-MWD												<b>Offset Well Error:</b>	0.0 ft
Reference		Offset		Semi Major Axis			Distance						
Measured Depth (ft)	Vertical Depth (ft)	Measured Depth (ft)	Vertical Depth (ft)	Reference (ft)	Offset (ft)	Highside Toolface (°)	Offset Wellbore Centre +N/-S (ft)	+E/-W (ft)	Between Centres (ft)	Between Ellipses (ft)	Minimum Separation (ft)	Separation Factor	Warning
10,200.0	7,000.0	10,509.2	7,310.0	90.7	91.1	158.19	-382.9	2,930.5	335.0	252.9	82.05	4.083	
10,300.0	7,000.0	10,609.2	7,310.0	93.5	93.8	158.18	-383.8	3,030.5	335.0	250.5	84.50	3.964	
10,400.0	7,000.0	10,709.2	7,310.0	96.2	96.6	158.18	-384.7	3,130.5	335.0	248.1	86.95	3.853	
10,500.0	7,000.0	10,809.2	7,310.0	99.0	99.4	158.17	-385.6	3,230.5	335.0	245.6	89.41	3.747	
10,600.0	7,000.0	10,909.2	7,310.0	101.8	102.1	158.17	-386.5	3,330.5	335.0	243.2	91.87	3.647	
10,700.0	7,000.0	11,009.2	7,310.0	104.5	104.9	158.16	-387.4	3,430.5	335.0	240.7	94.33	3.552	
10,800.0	7,000.0	11,109.2	7,310.0	107.3	107.7	158.16	-388.3	3,530.5	335.1	238.3	96.80	3.461	
10,900.0	7,000.0	11,209.2	7,310.0	110.1	110.4	158.15	-389.2	3,630.5	335.1	235.8	99.27	3.375	
11,000.0	7,000.0	11,309.2	7,310.0	112.8	113.2	158.15	-390.1	3,730.5	335.1	233.3	101.75	3.293	
11,100.0	7,000.0	11,409.2	7,310.0	115.6	116.0	158.14	-391.0	3,830.5	335.1	230.9	104.22	3.215	
11,200.0	7,000.0	11,509.2	7,310.0	118.4	118.8	158.14	-391.9	3,930.5	335.1	228.4	106.70	3.141	
11,300.0	7,000.0	11,609.2	7,310.0	121.2	121.6	158.13	-392.8	4,030.5	335.1	225.9	109.18	3.069	
11,400.0	7,000.0	11,709.2	7,310.0	124.0	124.3	158.13	-393.7	4,130.4	335.1	223.5	111.67	3.001	
11,500.0	7,000.0	11,809.2	7,310.0	126.7	127.1	158.12	-394.6	4,230.4	335.1	221.0	114.15	2.936	
11,600.0	7,000.0	11,909.2	7,310.0	129.5	129.9	158.11	-395.5	4,330.4	335.2	218.5	116.64	2.873	
11,652.2	7,000.0	11,961.4	7,310.0	131.0	131.3	158.11	-396.0	4,382.6	335.2	217.2	117.94	2.842	
11,689.9	7,000.0	11,998.0	7,310.0	132.0	132.4	158.11	-396.3	4,419.3	335.2	216.3	118.87	2.820 SF	

<b>Company:</b>	Synergy Resources	<b>Local Co-ordinate Reference:</b>	Well SRC Union 12HZN
<b>Project:</b>	SEC.5-T2N-R68W	<b>TVD Reference:</b>	WELL @ 4978.0ft (RKB - 13')
<b>Reference Site:</b>	SRC Union Pad Sec.5-T2N-R68W	<b>MD Reference:</b>	WELL @ 4978.0ft (RKB - 13')
<b>Site Error:</b>	0.0ft	<b>North Reference:</b>	True
<b>Reference Well:</b>	SRC Union 12HZN	<b>Survey Calculation Method:</b>	Minimum Curvature
<b>Well Error:</b>	0.0ft	<b>Output errors are at</b>	2.00 sigma
<b>Reference Wellbore</b>	Wellbore #1	<b>Database:</b>	Landmark
<b>Reference Design:</b>	Plan #2 (4-08-13)	<b>Offset TVD Reference:</b>	Offset Datum

Offset Design													Offset Site Error:	0.0 ft
Survey Program: 0-MWID													Offset Well Error:	0.0 ft
Measured Depth (ft)	Vertical Depth (ft)	Measured Depth (ft)	Vertical Depth (ft)	Reference (ft)	Offset (ft)	Semi Major Axis Highside Toolface (°)	Offset Wellbore Centre +N/-S (ft)	+E/-W (ft)	Between Centres (ft)	Between Ellipses (ft)	Minimum Separation (ft)	Separation Factor	Warning	
0.0	0.0	0.0	0.0	0.0	0.0	68.74	7.3	18.7	20.1					
100.0	100.0	100.0	100.0	0.1	0.1	68.74	7.3	18.7	20.1	19.9	0.22	89.390		
200.0	200.0	200.0	200.0	0.3	0.3	68.74	7.3	18.7	20.1	19.4	0.67	29.797		
300.0	300.0	300.0	300.0	0.6	0.6	68.74	7.3	18.7	20.1	19.0	1.12	17.878		
400.0	400.0	400.0	400.0	0.8	0.8	68.74	7.3	18.7	20.1	18.5	1.57	12.770		
500.0	500.0	500.0	500.0	1.0	1.0	68.74	7.3	18.7	20.1	18.1	2.02	9.932		
600.0	600.0	600.0	600.0	1.2	1.2	68.74	7.3	18.7	20.1	17.6	2.47	8.126		
700.0	700.0	700.0	700.0	1.5	1.5	68.74	7.3	18.7	20.1	17.2	2.92	6.876		
800.0	800.0	800.0	800.0	1.7	1.7	68.74	7.3	18.7	20.1	16.7	3.37	5.959		
900.0	900.0	900.0	900.0	1.9	1.9	68.74	7.3	18.7	20.1	16.3	3.82	5.258		
1,000.0	1,000.0	1,000.1	1,000.1	2.1	2.1	63.79	8.7	17.7	19.8	15.5	4.27	4.633		
1,059.5	1,059.5	1,059.6	1,059.5	2.3	2.3	55.97	11.0	16.2	19.6	15.1	4.54	4.319 CC		
1,100.0	1,100.0	1,100.0	1,099.8	2.4	2.4	48.59	13.1	14.8	19.8	15.0	4.72	4.187 ES		
1,200.0	1,200.0	1,199.4	1,198.8	2.6	2.6	26.24	20.2	10.0	22.6	17.4	5.17	4.371		
1,300.0	1,300.0	1,298.0	1,296.8	2.8	2.8	6.19	30.2	3.3	30.5	24.9	5.62	5.431		
1,400.0	1,400.0	1,395.8	1,393.3	3.0	3.1	-6.97	42.7	-5.2	43.6	37.5	6.08	7.163		
1,500.0	1,500.0	1,493.9	1,489.9	3.3	3.4	-14.67	57.2	-15.0	60.0	53.4	6.58	9.117		
1,600.0	1,600.0	1,592.4	1,586.8	3.5	3.7	-19.06	71.7	-24.8	77.0	69.9	7.09	10.863		
1,700.0	1,700.0	1,690.8	1,683.6	3.7	4.1	-21.85	86.2	-34.6	94.3	86.7	7.61	12.387		
1,800.0	1,800.0	1,789.2	1,780.4	3.9	4.4	-23.78	100.7	-44.4	111.8	103.6	8.15	13.714		
1,900.0	1,900.0	1,887.6	1,877.3	4.1	4.7	91.86	115.2	-54.2	129.4	121.0	8.36	15.471		
2,000.0	1,999.8	1,986.0	1,974.1	4.3	5.1	92.41	129.7	-64.0	147.1	138.3	8.80	16.725		
2,100.0	2,099.5	2,084.2	2,070.8	4.5	5.5	93.99	144.2	-73.7	165.1	155.8	9.25	17.852		
2,200.0	2,198.7	2,182.1	2,167.1	4.7	5.8	96.26	158.6	-83.5	183.6	173.9	9.73	18.875		
2,300.0	2,297.7	2,279.9	2,263.3	5.0	6.2	98.95	173.0	-93.2	202.7	192.5	10.24	19.803		
2,400.0	2,396.7	2,377.6	2,359.5	5.2	6.6	101.18	187.4	-103.0	222.2	211.4	10.76	20.640		
2,500.0	2,495.7	2,475.4	2,455.7	5.5	6.9	103.06	201.8	-112.7	241.9	230.6	11.31	21.396		
2,600.0	2,594.7	2,573.1	2,551.9	5.8	7.3	104.65	216.3	-122.4	261.8	250.0	11.86	22.078		
2,700.0	2,693.7	2,670.9	2,648.1	6.0	7.7	106.02	230.7	-132.1	282.0	269.5	12.42	22.695		
2,800.0	2,792.7	2,768.6	2,744.3	6.3	8.1	107.20	245.1	-141.9	302.2	289.2	13.00	23.253		
2,900.0	2,891.7	2,866.4	2,840.5	6.6	8.5	108.24	259.5	-151.6	322.6	309.0	13.58	23.760		
3,000.0	2,990.7	2,964.1	2,936.7	6.9	8.8	109.16	273.9	-161.3	343.0	328.9	14.16	24.221		
3,100.0	3,089.7	3,061.9	3,032.9	7.2	9.2	109.97	288.3	-171.1	363.5	348.8	14.75	24.641		
3,200.0	3,188.7	3,159.6	3,129.0	7.5	9.6	110.69	302.7	-180.8	384.1	368.8	15.35	25.026		
3,300.0	3,287.7	3,257.4	3,225.2	7.8	10.0	111.34	317.1	-190.5	404.8	388.8	15.95	25.379		
3,400.0	3,386.8	3,355.1	3,321.4	8.1	10.4	111.93	331.5	-200.3	425.4	408.9	16.55	25.704		
3,500.0	3,485.8	3,452.9	3,417.6	8.5	10.8	112.46	345.9	-210.0	446.2	429.0	17.16	26.004		
3,600.0	3,584.8	3,550.6	3,513.8	8.8	11.1	112.95	360.3	-219.7	466.9	449.2	17.77	26.281		
3,700.0	3,683.8	3,648.4	3,610.0	9.1	11.5	113.39	374.8	-229.5	487.7	469.3	18.38	26.538		
3,800.0	3,782.8	3,746.1	3,706.2	9.4	11.9	113.80	389.2	-239.2	508.5	489.5	18.99	26.777		
3,900.0	3,881.8	3,843.9	3,802.4	9.8	12.3	114.18	403.6	-248.9	529.4	509.8	19.61	26.999		
4,000.0	3,980.8	3,941.6	3,898.6	10.1	12.7	114.52	418.0	-258.7	550.2	530.0	20.22	27.207		
4,100.0	4,079.8	4,039.4	3,994.8	10.4	13.1	114.85	432.4	-268.4	571.1	550.2	20.84	27.401		
4,200.0	4,178.8	4,137.1	4,090.9	10.8	13.5	115.15	446.8	-278.1	592.0	570.5	21.46	27.583		
4,300.0	4,277.8	4,234.9	4,187.1	11.1	13.8	115.43	461.2	-287.9	612.9	590.8	22.08	27.753		
4,400.0	4,376.8	4,332.6	4,283.3	11.4	14.2	115.69	475.6	-297.6	633.8	611.1	22.71	27.913		
4,500.0	4,475.8	4,430.4	4,379.5	11.8	14.6	115.93	490.0	-307.3	654.7	631.4	23.33	28.064		
4,600.0	4,574.8	4,528.1	4,475.7	12.1	15.0	116.16	504.4	-317.0	675.7	651.7	23.95	28.207		
4,700.0	4,673.8	4,625.9	4,571.9	12.4	15.4	116.37	518.8	-326.8	696.6	672.0	24.58	28.341		
4,800.0	4,772.8	4,723.6	4,668.1	12.8	15.8	116.58	533.2	-336.5	717.6	692.4	25.21	28.468		
4,900.0	4,871.8	4,821.4	4,764.3	13.1	16.2	116.77	547.7	-346.2	738.5	712.7	25.83	28.589		
5,000.0	4,970.8	4,919.1	4,860.5	13.5	16.6	116.95	562.1	-356.0	759.5	733.1	26.46	28.703		

CC - Min centre to center distance or convergent point, SF - min separation factor, ES - min ellipse separation

<b>Company:</b>	Synergy Resources	<b>Local Co-ordinate Reference:</b>	Well SRC Union 12HZN
<b>Project:</b>	SEC.5-T2N-R68W	<b>TVD Reference:</b>	WELL @ 4978.0ft (RKB - 13')
<b>Reference Site:</b>	SRC Union Pad Sec.5-T2N-R68W	<b>MD Reference:</b>	WELL @ 4978.0ft (RKB - 13')
<b>Site Error:</b>	0.0ft	<b>North Reference:</b>	True
<b>Reference Well:</b>	SRC Union 12HZN	<b>Survey Calculation Method:</b>	Minimum Curvature
<b>Well Error:</b>	0.0ft	<b>Output errors are at</b>	2.00 sigma
<b>Reference Wellbore</b>	Wellbore #1	<b>Database:</b>	Landmark
<b>Reference Design:</b>	Plan #2 (4-08-13)	<b>Offset TVD Reference:</b>	Offset Datum

Offset Design SRC Union Pad Sec.5-T2N-R68W - SRC Union 5AHZC - Wellbore #1 - Plan #2 (4-08-13)												Offset Site Error:	0.0 ft
Survey Program: 0-MWID												Offset Well Error:	0.0 ft
Reference		Offset		Semi Major Axis			Distance						Warning
Measured Depth (ft)	Vertical Depth (ft)	Measured Depth (ft)	Vertical Depth (ft)	Reference (ft)	Offset (ft)	Highside Toolface (°)	Offset Wellbore Centre +N/-S (ft)	+E/-W (ft)	Between Centres (ft)	Between Ellipses (ft)	Minimum Separation (ft)	Separation Factor	
5,100.0	5,069.8	5,016.9	4,956.7	13.8	17.0	117.12	576.5	-365.7	780.5	753.4	27.09	28.811	
5,200.0	5,168.8	5,114.6	5,052.8	14.1	17.3	117.28	590.9	-375.4	801.5	773.8	27.72	28.914	
5,300.0	5,267.8	5,212.4	5,149.0	14.5	17.7	117.44	605.3	-385.2	822.5	794.1	28.35	29.012	
5,400.0	5,366.8	5,310.1	5,245.2	14.8	18.1	117.58	619.7	-394.9	843.5	814.5	28.98	29.106	
5,500.0	5,465.9	5,407.9	5,341.5	15.1	18.5	117.93	634.1	-404.6	864.1	834.5	29.62	29.170	
5,600.0	5,565.4	5,506.1	5,438.1	15.4	18.9	118.16	648.6	-414.4	883.2	853.0	30.20	29.240	
5,700.0	5,665.2	5,619.9	5,550.2	15.6	19.3	118.13	664.8	-425.4	900.3	869.5	30.75	29.274	
5,800.0	5,765.2	5,753.5	5,682.6	15.7	19.7	117.91	679.7	-435.4	912.6	881.4	31.22	29.231	
5,900.0	5,865.2	5,888.5	5,817.0	15.9	20.0	0.94	689.4	-442.0	919.8	888.1	31.75	28.970	
6,000.0	5,965.2	6,024.2	5,952.7	16.1	20.2	0.74	694.0	-445.1	923.1	891.0	32.17	28.694	
6,100.0	6,065.2	6,136.8	6,065.2	16.2	20.3	0.73	694.3	-445.3	923.4	890.8	32.52	28.391	
6,200.0	6,165.2	6,236.8	6,165.2	16.4	20.5	0.73	694.3	-445.3	923.4	890.5	32.87	28.094	
6,300.0	6,265.2	6,336.8	6,265.2	16.6	20.6	0.73	694.3	-445.3	923.4	890.1	33.21	27.801	
6,400.0	6,365.2	6,436.8	6,365.2	16.7	20.8	0.73	694.3	-445.3	923.4	889.8	33.56	27.512	
6,500.0	6,465.2	6,536.8	6,465.2	16.9	20.9	0.73	694.3	-445.3	923.4	889.4	33.91	27.227	
6,567.5	6,532.5	6,604.1	6,532.5	17.0	21.0	-90.00	694.3	-445.3	923.4	889.4	33.95	27.196	
6,600.0	6,564.8	6,636.4	6,564.8	17.0	21.1	-90.20	694.3	-445.3	923.4	889.3	34.03	27.130	
6,700.0	6,661.3	6,732.8	6,661.3	17.0	21.2	-91.69	694.3	-445.3	923.8	889.7	34.11	27.086	
6,800.0	6,751.0	6,822.6	6,751.0	16.9	21.3	-93.85	694.3	-445.3	926.2	892.2	34.05	27.205	
6,900.0	6,830.8	6,915.3	6,843.6	16.8	21.5	-96.46	694.3	-442.4	932.6	898.7	33.92	27.496	
7,000.0	6,897.7	7,030.1	6,955.6	16.8	21.5	-99.44	694.3	-418.0	942.7	909.0	33.74	27.939	
7,100.0	6,949.1	7,170.8	7,081.2	17.0	21.3	-102.61	694.3	-355.7	955.3	921.7	33.63	28.405	
7,200.0	6,983.3	7,349.2	7,209.1	17.5	21.1	-105.82	694.3	-232.5	968.0	934.1	33.89	28.561	
7,300.0	6,999.0	7,571.6	7,299.0	18.5	20.7	-108.14	694.3	-30.9	976.8	941.2	35.60	27.442	
7,400.0	7,000.0	7,738.4	7,310.0	19.8	21.0	-108.47	694.1	135.1	978.6	940.0	38.61	25.347	
7,500.0	7,000.0	7,838.4	7,310.0	21.4	22.5	-108.46	693.7	235.1	979.1	937.5	41.57	23.552	
7,600.0	7,000.0	7,938.4	7,310.0	23.3	24.3	-108.45	693.4	335.1	979.6	934.6	44.97	21.784	
7,700.0	7,000.0	8,038.4	7,310.0	25.3	26.3	-108.44	693.0	435.1	980.0	931.3	48.71	20.119	
7,800.0	7,000.0	8,138.4	7,310.0	27.5	28.4	-108.43	692.6	535.1	980.5	927.8	52.73	18.594	
7,900.0	7,000.0	8,238.4	7,310.0	29.8	30.6	-108.42	692.3	635.1	981.0	924.0	56.97	17.218	
8,000.0	7,000.0	8,338.4	7,310.0	32.1	32.9	-108.41	691.9	735.1	981.5	920.1	61.39	15.988	
8,100.0	7,000.0	8,438.4	7,310.0	34.6	35.2	-108.40	691.6	835.1	981.9	916.0	65.94	14.892	
8,200.0	7,000.0	8,538.4	7,310.0	37.0	37.7	-108.39	691.2	935.1	982.4	911.8	70.60	13.915	
8,300.0	7,000.0	8,638.4	7,310.0	39.6	40.1	-108.38	690.8	1,035.1	982.9	907.5	75.35	13.044	
8,400.0	7,000.0	8,738.4	7,310.0	42.1	42.6	-108.38	690.5	1,135.1	983.4	903.2	80.18	12.264	
8,500.0	7,000.0	8,838.4	7,310.0	44.7	45.2	-108.37	690.1	1,235.1	983.9	898.8	85.08	11.564	
8,600.0	7,000.0	8,938.4	7,310.0	47.3	47.8	-108.36	689.7	1,335.1	984.3	894.3	90.02	10.935	
8,700.0	7,000.0	9,038.4	7,310.0	50.0	50.4	-108.35	689.4	1,435.1	984.8	889.8	95.01	10.366	
8,800.0	7,000.0	9,138.4	7,310.0	52.6	53.0	-108.34	689.0	1,535.1	985.3	885.3	100.03	9.850	
8,900.0	7,000.0	9,238.4	7,310.0	55.3	55.6	-108.33	688.6	1,635.1	985.8	880.7	105.09	9.380	
9,000.0	7,000.0	9,338.4	7,310.0	58.0	58.3	-108.32	688.3	1,735.1	986.2	876.1	110.18	8.952	
9,100.0	7,000.0	9,438.4	7,310.0	60.6	60.9	-108.31	687.9	1,835.1	986.7	871.4	115.29	8.559	
9,200.0	7,000.0	9,538.4	7,310.0	63.3	63.6	-108.30	687.5	1,935.1	987.2	866.8	120.42	8.198	
9,300.0	7,000.0	9,638.4	7,310.0	66.1	66.3	-108.29	687.2	2,035.1	987.7	862.1	125.57	7.866	
9,400.0	7,000.0	9,738.4	7,310.0	68.8	69.0	-108.28	686.8	2,135.1	988.1	857.4	130.73	7.559	
9,500.0	7,000.0	9,838.4	7,310.0	71.5	71.7	-108.27	686.4	2,235.1	988.6	852.7	135.91	7.274	
9,600.0	7,000.0	9,938.4	7,310.0	74.2	74.4	-108.27	686.1	2,335.1	989.1	848.0	141.11	7.010	
9,700.0	7,000.0	10,038.4	7,310.0	77.0	77.1	-108.26	685.7	2,435.1	989.6	843.3	146.32	6.763	
9,800.0	7,000.0	10,138.4	7,310.0	79.7	79.8	-108.25	685.3	2,535.1	990.1	838.5	151.53	6.534	
9,900.0	7,000.0	10,238.4	7,310.0	82.4	82.6	-108.24	685.0	2,635.1	990.5	833.8	156.76	6.319	
10,000.0	7,000.0	10,338.4	7,310.0	85.2	85.3	-108.23	684.6	2,735.1	991.0	829.0	161.99	6.118	
10,100.0	7,000.0	10,438.4	7,310.0	88.0	88.0	-108.22	684.2	2,835.1	991.5	824.3	167.24	5.929	

CC - Min centre to center distance or convergent point, SF - min separation factor, ES - min ellipse separation



<b>Company:</b>	Synergy Resources	<b>Local Co-ordinate Reference:</b>	Well SRC Union 12HZN
<b>Project:</b>	SEC.5-T2N-R68W	<b>TVD Reference:</b>	WELL @ 4978.0ft (RKB - 13')
<b>Reference Site:</b>	SRC Union Pad Sec.5-T2N-R68W	<b>MD Reference:</b>	WELL @ 4978.0ft (RKB - 13')
<b>Site Error:</b>	0.0ft	<b>North Reference:</b>	True
<b>Reference Well:</b>	SRC Union 12HZN	<b>Survey Calculation Method:</b>	Minimum Curvature
<b>Well Error:</b>	0.0ft	<b>Output errors are at</b>	2.00 sigma
<b>Reference Wellbore</b>	Wellbore #1	<b>Database:</b>	Landmark
<b>Reference Design:</b>	Plan #2 (4-08-13)	<b>Offset TVD Reference:</b>	Offset Datum

Offset Design												Offset Site Error:		0.0 ft
Survey Program: 0-MWD												Offset Well Error:		0.0 ft
Reference		Offset		Semi Major Axis			Distance						Warning	
Measured Depth	Vertical Depth	Measured Depth	Vertical Depth	Reference	Offset	Highside Toolface	Offset Wellbore Centre +N/-S	+E/-W	Between Centres	Between Ellipses	Minimum Separation	Separation Factor		
(ft)	(ft)	(ft)	(ft)	(ft)	(ft)	(°)	(ft)	(ft)	(ft)	(ft)	(ft)			
10,200.0	7,000.0	10,538.4	7,310.0	90.7	90.8	-108.21	683.9	2,935.1	992.0	819.5	172.49	5.751		
10,300.0	7,000.0	10,638.4	7,310.0	93.5	93.5	-108.20	683.5	3,035.1	992.4	814.7	177.75	5.584		
10,400.0	7,000.0	10,738.4	7,310.0	96.2	96.3	-108.19	683.1	3,135.1	992.9	809.9	183.01	5.426		
10,500.0	7,000.0	10,838.4	7,310.0	99.0	99.0	-108.18	682.8	3,235.1	993.4	805.1	188.28	5.276		
10,600.0	7,000.0	10,938.4	7,310.0	101.8	101.8	-108.17	682.4	3,335.1	993.9	800.3	193.55	5.135		
10,700.0	7,000.0	11,038.4	7,310.0	104.5	104.5	-108.17	682.0	3,435.1	994.4	795.5	198.83	5.001		
10,800.0	7,000.0	11,138.4	7,310.0	107.3	107.3	-108.16	681.7	3,535.1	994.8	790.7	204.12	4.874		
10,900.0	7,000.0	11,238.4	7,310.0	110.1	110.0	-108.15	681.3	3,635.1	995.3	785.9	209.40	4.753		
11,000.0	7,000.0	11,338.4	7,310.0	112.8	112.8	-108.14	680.9	3,735.1	995.8	781.1	214.70	4.638		
11,100.0	7,000.0	11,438.4	7,310.0	115.6	115.6	-108.13	680.6	3,835.0	996.3	776.3	219.99	4.529		
11,200.0	7,000.0	11,538.4	7,310.0	118.4	118.3	-108.12	680.2	3,935.0	996.8	771.5	225.29	4.424		
11,300.0	7,000.0	11,638.4	7,310.0	121.2	121.1	-108.11	679.8	4,035.0	997.2	766.6	230.59	4.325		
11,400.0	7,000.0	11,738.4	7,310.0	124.0	123.9	-108.10	679.5	4,135.0	997.7	761.8	235.90	4.229		
11,500.0	7,000.0	11,838.4	7,310.0	126.7	126.7	-108.09	679.1	4,235.0	998.2	757.0	241.21	4.138		
11,600.0	7,000.0	11,938.4	7,310.0	129.5	129.4	-108.08	678.7	4,335.0	998.7	752.1	246.52	4.051		
11,689.9	7,000.0	12,028.3	7,310.0	132.0	131.9	-108.08	678.4	4,425.0	999.1	747.8	251.30	3.976 SF		



<b>Company:</b>	Synergy Resources	<b>Local Co-ordinate Reference:</b>	Well SRC Union 12HZN
<b>Project:</b>	SEC.5-T2N-R68W	<b>TVD Reference:</b>	WELL @ 4978.0ft (RKB - 13')
<b>Reference Site:</b>	SRC Union Pad Sec.5-T2N-R68W	<b>MD Reference:</b>	WELL @ 4978.0ft (RKB - 13')
<b>Site Error:</b>	0.0ft	<b>North Reference:</b>	True
<b>Reference Well:</b>	SRC Union 12HZN	<b>Survey Calculation Method:</b>	Minimum Curvature
<b>Well Error:</b>	0.0ft	<b>Output errors are at</b>	2.00 sigma
<b>Reference Wellbore</b>	Wellbore #1	<b>Database:</b>	Landmark
<b>Reference Design:</b>	Plan #2 (4-08-13)	<b>Offset TVD Reference:</b>	Offset Datum

Offset Design													Offset Site Error:	0.0 ft
Survey Program: 0-MWID													Offset Well Error:	0.0 ft
Reference	Offset	Semi Major Axis		Distance		Warning								
Measured Depth (ft)	Vertical Depth (ft)	Measured Depth (ft)	Vertical Depth (ft)	Reference (ft)	Offset (ft)	Highside Toolface (°)	Offset Wellbore Centre +N/-S (ft)	+E/-W (ft)	Between Centres (ft)	Between Ellipses (ft)	Minimum Separation (ft)	Separation Factor		
0.0	0.0	0.0	0.0	0.0	0.0	68.64	21.9	55.9	60.0					
100.0	100.0	100.0	100.0	0.1	0.1	68.64	21.9	55.9	60.0	59.8	0.22	267.012		
200.0	200.0	200.0	200.0	0.3	0.3	68.64	21.9	55.9	60.0	59.3	0.67	89.004		
300.0	300.0	300.0	300.0	0.6	0.6	68.64	21.9	55.9	60.0	58.9	1.12	53.402		
400.0	400.0	400.0	400.0	0.8	0.8	68.64	21.9	55.9	60.0	58.4	1.57	38.145		
500.0	500.0	500.0	500.0	1.0	1.0	68.64	21.9	55.9	60.0	58.0	2.02	29.668		
600.0	600.0	600.0	600.0	1.2	1.2	68.64	21.9	55.9	60.0	57.5	2.47	24.274		
700.0	700.0	700.0	700.0	1.5	1.5	68.64	21.9	55.9	60.0	57.1	2.92	20.539		
800.0	800.0	800.0	800.0	1.7	1.7	68.64	21.9	55.9	60.0	56.6	3.37	17.801		
900.0	900.0	900.0	900.0	1.9	1.9	68.64	21.9	55.9	60.0	56.2	3.82	15.707		
1,000.0	1,000.0	1,000.0	1,000.0	2.1	2.1	68.64	21.9	55.9	60.0	55.7	4.27	14.053		
1,100.0	1,100.0	1,100.0	1,100.0	2.4	2.4	68.64	21.9	55.9	60.0	55.3	4.72	12.715		
1,200.0	1,200.0	1,200.0	1,200.0	2.6	2.6	68.64	21.9	55.9	60.0	54.8	5.17	11.609		
1,300.0	1,300.0	1,300.0	1,300.0	2.8	2.8	68.64	21.9	55.9	60.0	54.4	5.62	10.680		
1,400.0	1,400.0	1,400.0	1,400.0	3.0	3.0	68.64	21.9	55.9	60.0	53.9	6.07	9.889		
1,500.0	1,500.0	1,500.0	1,500.0	3.3	3.3	68.64	21.9	55.9	60.0	53.5	6.52	9.207		
1,600.0	1,600.0	1,600.0	1,600.0	3.5	3.5	68.64	21.9	55.9	60.0	53.0	6.97	8.613		
1,700.0	1,700.0	1,700.0	1,700.0	3.7	3.7	68.64	21.9	55.9	60.0	52.6	7.42	8.091		
1,800.0	1,800.0	1,800.0	1,800.0	3.9	3.9	68.64	21.9	55.9	60.0	52.1	7.87	7.629 CC, ES		
1,900.0	1,900.0	1,900.0	1,900.0	4.1	4.2	-174.89	21.9	55.9	61.8	53.5	8.29	7.448		
2,000.0	1,999.8	1,999.8	1,999.8	4.3	4.4	-175.28	21.9	55.9	67.0	58.3	8.69	7.706		
2,100.0	2,099.5	2,099.5	2,099.5	4.5	4.6	-175.81	21.9	55.9	75.7	66.6	9.08	8.330		
2,200.0	2,198.7	2,198.7	2,198.7	4.7	4.8	-176.38	21.9	55.9	87.8	78.3	9.47	9.275		
2,300.0	2,297.7	2,297.7	2,297.7	5.0	5.1	-176.87	21.9	55.9	101.9	92.0	9.88	10.306		
2,400.0	2,396.7	2,396.7	2,396.7	5.2	5.3	-177.25	21.9	55.9	115.9	105.6	10.31	11.247		
2,500.0	2,495.7	2,495.7	2,495.7	5.5	5.5	-177.55	21.9	55.9	130.0	119.3	10.73	12.110		
2,600.0	2,594.7	2,594.7	2,594.7	5.8	5.7	-177.79	21.9	55.9	144.1	132.9	11.16	12.904		
2,700.0	2,693.7	2,693.7	2,693.7	6.0	5.9	-177.99	21.9	55.9	158.1	146.5	11.60	13.635		
2,800.0	2,792.7	2,792.7	2,792.7	6.3	6.2	-178.15	21.9	55.9	172.2	160.2	12.03	14.311		
2,900.0	2,891.7	2,891.7	2,891.7	6.6	6.4	-178.29	21.9	55.9	186.3	173.8	12.47	14.937		
3,000.0	2,990.7	2,990.7	2,990.7	6.9	6.6	-178.41	21.9	55.9	200.3	187.4	12.91	15.518		
3,100.0	3,089.7	3,095.7	3,095.7	7.2	6.8	-178.76	22.1	54.3	213.2	199.8	13.35	15.964		
3,200.0	3,188.7	3,201.9	3,201.7	7.5	7.1	-179.63	22.9	48.9	223.0	209.2	13.79	16.172		
3,300.0	3,287.7	3,308.4	3,307.8	7.8	7.3	179.01	24.2	39.5	229.8	215.6	14.23	16.149		
3,400.0	3,386.8	3,415.0	3,413.6	8.1	7.5	177.15	26.1	26.2	233.8	219.1	14.68	15.922		
3,500.0	3,485.8	3,521.4	3,518.5	8.5	7.8	174.76	28.6	9.0	235.1	219.9	15.15	15.518		
3,600.0	3,584.8	3,621.2	3,616.6	8.8	8.0	172.21	31.1	-9.0	235.2	219.6	15.62	15.058		
3,700.0	3,683.8	3,720.6	3,714.4	9.1	8.3	169.69	33.7	-27.0	235.9	219.8	16.11	14.638		
3,800.0	3,782.8	3,820.1	3,812.2	9.4	8.6	167.18	36.3	-45.0	237.0	220.4	16.63	14.252		
3,900.0	3,881.8	3,919.5	3,910.0	9.8	8.9	164.69	38.9	-63.0	238.5	221.4	17.16	13.897		
4,000.0	3,980.8	4,019.0	4,007.7	10.1	9.2	162.25	41.4	-80.9	240.5	222.8	17.72	13.573		
4,100.0	4,079.8	4,118.4	4,105.5	10.4	9.5	159.85	44.0	-98.9	243.0	224.7	18.30	13.275		
4,200.0	4,178.8	4,217.9	4,203.3	10.8	9.8	157.50	46.6	-116.9	245.8	226.9	18.90	13.003		
4,300.0	4,277.8	4,317.3	4,301.1	11.1	10.1	155.20	49.2	-134.9	249.1	229.5	19.53	12.756		
4,400.0	4,376.8	4,416.8	4,398.8	11.4	10.5	152.97	51.7	-152.9	252.7	232.6	20.17	12.530		
4,500.0	4,475.8	4,516.2	4,496.6	11.8	10.8	150.81	54.3	-170.9	256.8	235.9	20.83	12.326		
4,600.0	4,574.8	4,615.7	4,594.4	12.1	11.1	148.71	56.9	-188.9	261.1	239.6	21.51	12.141		
4,700.0	4,673.8	4,715.1	4,692.2	12.4	11.5	146.69	59.5	-206.9	265.9	243.7	22.20	11.975		
4,800.0	4,772.8	4,814.6	4,789.9	12.8	11.8	144.74	62.0	-224.9	270.9	248.0	22.91	11.826		
4,900.0	4,871.8	4,914.0	4,887.7	13.1	12.2	142.86	64.6	-242.8	276.3	252.6	23.63	11.693		
5,000.0	4,970.8	5,013.5	4,985.5	13.5	12.6	141.05	67.2	-260.8	281.9	257.6	24.35	11.575		
5,100.0	5,069.8	5,112.9	5,083.3	13.8	12.9	139.32	69.8	-278.8	287.8	262.7	25.09	11.471		

CC - Min centre to center distance or convergent point, SF - min separation factor, ES - min ellipse separation

<b>Company:</b>	Synergy Resources	<b>Local Co-ordinate Reference:</b>	Well SRC Union 12HZN
<b>Project:</b>	SEC.5-T2N-R68W	<b>TVD Reference:</b>	WELL @ 4978.0ft (RKB - 13')
<b>Reference Site:</b>	SRC Union Pad Sec.5-T2N-R68W	<b>MD Reference:</b>	WELL @ 4978.0ft (RKB - 13')
<b>Site Error:</b>	0.0ft	<b>North Reference:</b>	True
<b>Reference Well:</b>	SRC Union 12HZN	<b>Survey Calculation Method:</b>	Minimum Curvature
<b>Well Error:</b>	0.0ft	<b>Output errors are at</b>	2.00 sigma
<b>Reference Wellbore</b>	Wellbore #1	<b>Database:</b>	Landmark
<b>Reference Design:</b>	Plan #2 (4-08-13)	<b>Offset TVD Reference:</b>	Offset Datum

Offset Design												Offset Site Error:	0.0 ft
Survey Program: 0-MWD												Offset Well Error:	0.0 ft
Reference		Offset		Semi Major Axis			Distance						
Measured Depth (ft)	Vertical Depth (ft)	Measured Depth (ft)	Vertical Depth (ft)	Reference (ft)	Offset (ft)	Highside Toolface (°)	Offset Wellbore Centre +N/-S (ft)	+E/-W (ft)	Between Centres (ft)	Between Ellipses (ft)	Minimum Separation (ft)	Separation Factor	Warning
5,200.0	5,168.8	5,212.4	5,181.1	14.1	13.3	137.65	72.3	-296.8	294.0	268.1	25.84	11.379	
5,300.0	5,267.8	5,311.8	5,278.8	14.5	13.7	136.06	74.9	-314.8	300.4	273.8	26.58	11.299	
5,400.0	5,366.8	5,411.3	5,376.6	14.8	14.0	134.53	77.5	-332.8	307.0	279.7	27.34	11.230	
5,500.0	5,465.9	5,510.7	5,474.4	15.1	14.4	133.02	80.1	-350.8	313.3	285.2	28.10	11.149	
5,600.0	5,565.4	5,610.0	5,572.0	15.4	14.8	131.13	82.6	-368.7	317.6	288.7	28.83	11.016	
5,700.0	5,665.2	5,709.1	5,669.4	15.6	15.2	128.79	85.2	-386.7	320.0	290.5	29.55	10.829	
5,800.0	5,765.2	5,807.8	5,766.5	15.7	15.5	125.99	87.8	-404.5	321.0	290.7	30.26	10.607	
5,900.0	5,865.2	5,906.5	5,863.7	15.9	15.9	6.43	90.1	-421.0	321.1	294.2	26.96	11.910	
6,000.0	5,965.2	6,006.2	5,962.4	16.1	16.1	4.04	92.0	-434.4	321.8	294.6	27.24	11.814	
6,100.0	6,065.2	6,106.7	6,062.4	16.2	16.3	2.25	93.5	-444.3	322.7	295.2	27.56	11.710	
6,200.0	6,165.2	6,207.7	6,163.3	16.4	16.5	1.08	94.4	-450.9	323.5	295.6	27.91	11.591	
6,300.0	6,265.2	6,309.2	6,264.7	16.6	16.7	0.55	94.8	-453.9	323.8	295.6	28.27	11.455	
6,400.0	6,365.2	6,409.7	6,365.2	16.7	16.9	0.51	94.9	-454.1	323.9	295.2	28.65	11.303	
6,500.0	6,465.2	6,509.7	6,465.2	16.9	17.1	0.51	94.9	-454.1	323.9	294.8	29.06	11.146	
6,600.0	6,564.8	6,609.4	6,564.6	17.0	17.2	-89.98	94.8	-447.1	323.9	290.3	33.61	9.636	
6,700.0	6,661.3	6,709.2	6,660.8	17.0	17.2	-89.98	94.7	-421.4	324.0	290.4	33.59	9.645	
6,800.0	6,751.0	6,808.9	6,750.4	16.9	17.1	-89.99	94.5	-377.9	324.2	290.8	33.44	9.695	
6,900.0	6,830.8	6,908.7	6,830.1	16.8	17.0	-89.99	94.3	-318.1	324.4	291.1	33.32	9.738	
7,000.0	6,897.7	7,008.5	6,897.0	16.8	17.1	-89.99	93.9	-244.3	324.8	291.3	33.46	9.704	
7,100.0	6,949.1	7,108.4	6,948.6	17.0	17.4	-89.99	93.6	-158.9	325.1	291.0	34.13	9.527	
7,200.0	6,983.3	7,208.3	6,983.0	17.5	18.1	-90.00	93.1	-65.3	325.5	290.0	35.48	9.175	
7,300.0	6,999.0	7,308.2	6,998.9	18.5	19.1	-90.00	92.7	33.2	325.9	288.4	37.53	8.685	
7,400.0	7,000.0	7,407.8	7,000.0	19.8	20.4	-90.00	92.3	132.8	326.4	286.2	40.17	8.126	
7,500.0	7,000.0	7,507.8	7,000.0	21.4	21.9	-90.00	92.0	232.8	327.0	283.6	43.38	7.538	
7,600.0	7,000.0	7,607.8	7,000.0	23.3	23.8	-90.00	91.7	332.8	327.5	280.5	47.03	6.963	
7,700.0	7,000.0	7,707.8	7,000.0	25.3	25.7	-90.00	91.4	432.8	328.0	277.0	51.05	6.426	
7,800.0	7,000.0	7,807.8	7,000.0	27.5	27.9	-90.00	91.0	532.8	328.6	273.3	55.34	5.938	
7,900.0	7,000.0	7,907.8	7,000.0	29.8	30.1	-90.00	90.7	632.8	329.1	269.3	59.85	5.499	
8,000.0	7,000.0	8,007.8	7,000.0	32.1	32.4	-90.00	90.4	732.8	329.7	265.1	64.53	5.109	
8,100.0	7,000.0	8,107.8	7,000.0	34.6	34.8	-90.00	90.1	832.8	330.2	260.9	69.35	4.761	
8,200.0	7,000.0	8,207.8	7,000.0	37.0	37.3	-90.00	89.7	932.8	330.8	256.5	74.29	4.453	
8,300.0	7,000.0	8,307.8	7,000.0	39.6	39.8	-90.00	89.4	1,032.8	331.3	252.0	79.31	4.177	
8,400.0	7,000.0	8,407.8	7,000.0	42.1	42.3	-90.00	89.1	1,132.8	331.9	247.4	84.41	3.932	
8,500.0	7,000.0	8,507.8	7,000.0	44.7	44.9	-90.00	88.8	1,232.8	332.4	242.8	89.57	3.711	
8,600.0	7,000.0	8,607.8	7,000.0	47.3	47.5	-90.00	88.4	1,332.8	332.9	238.2	94.78	3.513	
8,700.0	7,000.0	8,707.8	7,000.0	50.0	50.1	-90.00	88.1	1,432.8	333.5	233.5	100.03	3.334	
8,800.0	7,000.0	8,807.8	7,000.0	52.6	52.7	-90.00	87.8	1,532.8	334.0	228.7	105.32	3.172	
8,900.0	7,000.0	8,907.8	7,000.0	55.3	55.4	-90.00	87.5	1,632.8	334.6	223.9	110.64	3.024	
9,000.0	7,000.0	9,007.8	7,000.0	58.0	58.1	-90.00	87.1	1,732.8	335.1	219.1	115.99	2.889	
9,100.0	7,000.0	9,107.8	7,000.0	60.6	60.7	-90.00	86.8	1,832.8	335.7	214.3	121.36	2.766	
9,200.0	7,000.0	9,207.8	7,000.0	63.3	63.4	-90.00	86.5	1,932.7	336.2	209.4	126.76	2.652	
9,300.0	7,000.0	9,307.8	7,000.0	66.1	66.1	-90.00	86.2	2,032.7	336.7	204.6	132.17	2.548	
9,400.0	7,000.0	9,407.8	7,000.0	68.8	68.8	-90.00	85.8	2,132.7	337.3	199.7	137.60	2.451	
9,500.0	7,000.0	9,507.8	7,000.0	71.5	71.6	-90.00	85.5	2,232.7	337.8	194.8	143.04	2.362	
9,600.0	7,000.0	9,607.8	7,000.0	74.2	74.3	-90.00	85.2	2,332.7	338.4	189.9	148.49	2.279	
9,700.0	7,000.0	9,707.8	7,000.0	77.0	77.0	-90.00	84.8	2,432.7	338.9	185.0	153.96	2.201	
9,800.0	7,000.0	9,807.8	7,000.0	79.7	79.8	-90.00	84.5	2,532.7	339.5	180.0	159.43	2.129	
9,900.0	7,000.0	9,907.8	7,000.0	82.4	82.5	-90.00	84.2	2,632.7	340.0	175.1	164.92	2.062	
10,000.0	7,000.0	10,007.8	7,000.0	85.2	85.2	-90.00	83.9	2,732.7	340.6	170.1	170.41	1.998	
10,100.0	7,000.0	10,107.8	7,000.0	88.0	88.0	-90.00	83.5	2,832.7	341.1	165.2	175.91	1.939	
10,200.0	7,000.0	10,207.8	7,000.0	90.7	90.7	-90.00	83.2	2,932.7	341.6	160.2	181.42	1.883	
10,300.0	7,000.0	10,307.8	7,000.0	93.5	93.5	-90.00	82.9	3,032.7	342.2	155.2	186.93	1.831	

CC - Min centre to center distance or convergent point, SF - min separation factor, ES - min ellipse separation

<b>Company:</b>	Synergy Resources	<b>Local Co-ordinate Reference:</b>	Well SRC Union 12HZN
<b>Project:</b>	SEC.5-T2N-R68W	<b>TVD Reference:</b>	WELL @ 4978.0ft (RKB - 13')
<b>Reference Site:</b>	SRC Union Pad Sec.5-T2N-R68W	<b>MD Reference:</b>	WELL @ 4978.0ft (RKB - 13')
<b>Site Error:</b>	0.0ft	<b>North Reference:</b>	True
<b>Reference Well:</b>	SRC Union 12HZN	<b>Survey Calculation Method:</b>	Minimum Curvature
<b>Well Error:</b>	0.0ft	<b>Output errors are at</b>	2.00 sigma
<b>Reference Wellbore</b>	Wellbore #1	<b>Database:</b>	Landmark
<b>Reference Design:</b>	Plan #2 (4-08-13)	<b>Offset TVD Reference:</b>	Offset Datum

<b>Offset Design</b>												<b>Offset Site Error:</b>	0.0 ft
SRC Union Pad Sec.5-T2N-R68W - SRC Union 5AHZN - Wellbore #1 - Plan #2 (4-08-13)												<b>Offset Well Error:</b>	0.0 ft
Survey Program: 0-MWD													
Reference		Offset		Semi Major Axis			Distance						
Measured Depth (ft)	Vertical Depth (ft)	Measured Depth (ft)	Vertical Depth (ft)	Reference (ft)	Offset (ft)	Highside Toolface (°)	Offset Wellbore Centre +N/-S (ft)	+E/-W (ft)	Between Centres (ft)	Between Ellipses (ft)	Minimum Separation (ft)	Separation Factor	Warning
10,400.0	7,000.0	10,407.8	7,000.0	96.2	96.2	-90.00	82.6	3,132.7	342.7	150.3	192.45	1.781	
10,500.0	7,000.0	10,507.8	7,000.0	99.0	99.0	-90.00	82.2	3,232.7	343.3	145.3	197.97	1.734	
10,600.0	7,000.0	10,607.8	7,000.0	101.8	101.8	-90.00	81.9	3,332.7	343.8	140.3	203.50	1.689	
10,700.0	7,000.0	10,707.8	7,000.0	104.5	104.5	-90.00	81.6	3,432.7	344.4	135.3	209.04	1.647	
10,800.0	7,000.0	10,807.8	7,000.0	107.3	107.3	-90.00	81.3	3,532.7	344.9	130.3	214.57	1.607	
10,900.0	7,000.0	10,907.8	7,000.0	110.1	110.1	-90.00	80.9	3,632.7	345.4	125.3	220.12	1.569	
11,000.0	7,000.0	11,007.8	7,000.0	112.8	112.8	-90.00	80.6	3,732.7	346.0	120.3	225.66	1.533	
11,100.0	7,000.0	11,107.8	7,000.0	115.6	115.6	-90.00	80.3	3,832.7	346.5	115.3	231.21	1.499	Level 3
11,200.0	7,000.0	11,207.8	7,000.0	118.4	118.4	-90.00	80.0	3,932.7	347.1	110.3	236.76	1.466	Level 3
11,300.0	7,000.0	11,307.8	7,000.0	121.2	121.2	-90.00	79.6	4,032.7	347.6	105.3	242.31	1.435	Level 3
11,400.0	7,000.0	11,407.8	7,000.0	124.0	123.9	-90.00	79.3	4,132.7	348.2	100.3	247.87	1.405	Level 3
11,500.0	7,000.0	11,507.8	7,000.0	126.7	126.7	-90.00	79.0	4,232.7	348.7	95.3	253.43	1.376	Level 3
11,600.0	7,000.0	11,607.8	7,000.0	129.5	129.5	-90.00	78.7	4,332.7	349.2	90.3	258.99	1.349	Level 3
11,689.9	7,000.0	11,697.7	7,000.0	132.0	132.0	-90.00	78.4	4,422.6	349.7	85.7	263.99	1.325	Level 3, SF

<b>Company:</b>	Synergy Resources	<b>Local Co-ordinate Reference:</b>	Well SRC Union 12HZN
<b>Project:</b>	SEC.5-T2N-R68W	<b>TVD Reference:</b>	WELL @ 4978.0ft (RKB - 13')
<b>Reference Site:</b>	SRC Union Pad Sec.5-T2N-R68W	<b>MD Reference:</b>	WELL @ 4978.0ft (RKB - 13')
<b>Site Error:</b>	0.0ft	<b>North Reference:</b>	True
<b>Reference Well:</b>	SRC Union 12HZN	<b>Survey Calculation Method:</b>	Minimum Curvature
<b>Well Error:</b>	0.0ft	<b>Output errors are at</b>	2.00 sigma
<b>Reference Wellbore</b>	Wellbore #1	<b>Database:</b>	Landmark
<b>Reference Design:</b>	Plan #2 (4-08-13)	<b>Offset TVD Reference:</b>	Offset Datum

Offset Design SRC Union Pad Sec.5-T2N-R68W - SRC Union 5FD - Wellbore #1 - Plan #1 (1-03-13)													Offset Site Error:	0.0 ft
Survey Program: 0-MWD													Offset Well Error:	0.0 ft
Measured Depth (ft)	Vertical Depth (ft)	Measured Depth (ft)	Vertical Depth (ft)	Reference (ft)	Offset (ft)	Semi Major Axis Reference (ft)	Highside Toolface (°)	Offset Wellbore Centre +N/-S (ft)	+E/-W (ft)	Between Centres (ft)	Between Ellipses (ft)	Minimum Separation (ft)	Separation Factor	Warning
0.0	0.0	0.0	0.0	0.0	0.0	-110.99	-110.99	-43.0	-112.1	120.0				
100.0	100.0	98.0	98.0	0.1	0.1	-110.99	-110.99	-43.0	-112.1	120.0	119.8	0.22	539.397	
200.0	200.0	198.0	198.0	0.3	0.3	-110.99	-110.99	-43.0	-112.1	120.0	119.4	0.67	179.199	
300.0	300.0	298.0	298.0	0.6	0.6	-110.99	-110.99	-43.0	-112.1	120.0	118.9	1.12	107.232	
400.0	400.0	398.0	398.0	0.8	0.8	-110.99	-110.99	-43.0	-112.1	120.0	118.5	1.57	76.506	
500.0	500.0	498.0	498.0	1.0	1.0	-110.99	-110.99	-43.0	-112.1	120.0	118.0	2.02	59.467	
600.0	600.0	598.0	598.0	1.2	1.2	-110.99	-110.99	-43.0	-112.1	120.0	117.6	2.47	48.635	
700.0	700.0	698.0	698.0	1.5	1.5	-110.99	-110.99	-43.0	-112.1	120.0	117.1	2.92	41.141	
800.0	800.0	798.0	798.0	1.7	1.7	-110.99	-110.99	-43.0	-112.1	120.0	116.7	3.37	35.648	
900.0	900.0	898.0	898.0	1.9	1.9	-110.99	-110.99	-43.0	-112.1	120.0	116.2	3.82	31.450	
1,000.0	1,000.0	998.0	998.0	2.1	2.1	-110.99	-110.99	-43.0	-112.1	120.0	115.8	4.27	28.136 CC	
1,100.0	1,100.0	1,097.5	1,097.5	2.4	2.4	-110.40	-110.40	-41.9	-112.7	120.2	115.5	4.71	25.507 ES	
1,200.0	1,200.0	1,196.9	1,196.8	2.6	2.6	-108.61	-108.61	-38.6	-114.6	120.9	115.7	5.16	23.425	
1,300.0	1,300.0	1,296.0	1,295.7	2.8	2.8	-105.66	-105.66	-33.0	-117.7	122.3	116.7	5.61	21.792	
1,400.0	1,400.0	1,395.5	1,394.8	3.0	3.0	-101.96	-101.96	-25.8	-121.8	124.5	118.5	6.07	20.529	
1,500.0	1,500.0	1,495.1	1,494.1	3.3	3.3	-98.37	-98.37	-18.5	-125.9	127.3	120.8	6.53	19.512	
1,600.0	1,600.0	1,594.8	1,593.4	3.5	3.5	-94.93	-94.93	-11.2	-130.0	130.6	123.6	6.99	18.685	
1,700.0	1,700.0	1,694.4	1,692.7	3.7	3.8	-91.68	-91.68	-3.9	-134.2	134.3	126.9	7.46	18.011	
1,800.0	1,800.0	1,794.1	1,792.0	3.9	4.0	-88.61	-88.61	3.4	-138.3	138.4	130.5	7.93	17.459	
1,900.0	1,900.0	1,893.7	1,891.3	4.1	4.3	31.22	31.22	10.6	-142.4	141.5	133.1	8.35	16.951	
2,000.0	1,999.8	1,993.2	1,990.5	4.3	4.5	35.10	35.10	17.9	-146.5	142.0	133.3	8.76	16.218	
2,100.0	2,099.5	2,092.5	2,089.4	4.5	4.8	39.82	39.82	25.2	-150.6	140.6	131.4	9.17	15.332	
2,200.0	2,198.7	2,191.5	2,188.0	4.7	5.0	45.62	45.62	32.4	-154.7	137.6	128.0	9.58	14.360	
2,300.0	2,297.7	2,290.2	2,286.4	5.0	5.3	52.18	52.18	39.7	-158.8	135.0	124.9	10.03	13.460	
2,391.7	2,388.5	2,380.7	2,376.6	5.2	5.5	58.34	58.34	46.3	-162.6	134.2	123.7	10.45	12.839	
2,400.0	2,396.7	2,388.9	2,384.7	5.2	5.5	58.89	58.89	46.9	-162.9	134.2	123.7	10.49	12.793	
2,500.0	2,495.7	2,487.6	2,483.1	5.5	5.8	65.59	65.59	54.1	-167.0	135.3	124.3	10.97	12.336	
2,600.0	2,594.7	2,586.3	2,581.5	5.8	6.1	72.10	72.10	61.3	-171.1	138.2	126.8	11.46	12.061	
2,700.0	2,693.7	2,685.0	2,679.8	6.0	6.3	78.27	78.27	68.5	-175.1	142.9	131.0	11.97	11.939 SF	
2,800.0	2,792.7	2,783.8	2,778.2	6.3	6.6	83.99	83.99	75.8	-179.2	149.2	136.7	12.49	11.943	
2,900.0	2,891.7	2,882.5	2,876.6	6.6	6.8	89.21	89.21	83.0	-183.3	156.9	143.8	13.02	12.046	
3,000.0	2,990.7	2,981.2	2,974.9	6.9	7.1	93.92	93.92	90.2	-187.4	165.7	152.2	13.56	12.225	
3,100.0	3,089.7	3,079.9	3,073.3	7.2	7.4	98.14	98.14	97.4	-191.5	175.6	161.5	14.09	12.460	
3,200.0	3,188.7	3,178.6	3,171.7	7.5	7.6	101.90	101.90	104.6	-195.6	186.3	171.7	14.63	12.735	
3,300.0	3,287.7	3,277.3	3,270.0	7.8	7.9	105.23	105.23	111.9	-199.7	197.7	182.6	15.17	13.038	
3,400.0	3,386.8	3,376.0	3,368.4	8.1	8.2	108.20	108.20	119.1	-203.7	209.8	194.1	15.70	13.359	
3,500.0	3,485.8	3,474.7	3,466.7	8.5	8.4	110.85	110.85	126.3	-207.8	222.3	206.0	16.24	13.690	
3,600.0	3,584.8	3,573.5	3,565.1	8.8	8.7	113.21	113.21	133.5	-211.9	235.2	218.5	16.77	14.025	
3,700.0	3,683.8	3,672.2	3,663.5	9.1	9.0	115.32	115.32	140.8	-216.0	248.5	231.2	17.31	14.361	
3,800.0	3,782.8	3,770.9	3,761.8	9.4	9.2	117.22	117.22	148.0	-220.1	262.1	244.3	17.84	14.695	
3,900.0	3,881.8	3,869.6	3,860.2	9.8	9.5	118.93	118.93	155.2	-224.2	276.0	257.6	18.37	15.023	
4,000.0	3,980.8	3,968.3	3,958.6	10.1	9.7	120.48	120.48	162.4	-228.3	290.1	271.2	18.90	15.345	
4,100.0	4,079.8	4,067.0	4,056.9	10.4	10.0	121.88	121.88	169.6	-232.3	304.3	284.9	19.44	15.660	
4,200.0	4,178.8	4,165.7	4,155.3	10.8	10.3	123.16	123.16	176.9	-236.4	318.8	298.8	19.97	15.966	
4,300.0	4,277.8	4,264.4	4,253.7	11.1	10.5	124.33	124.33	184.1	-240.5	333.3	312.9	20.50	16.263	
4,400.0	4,376.8	4,363.2	4,352.0	11.4	10.8	125.40	125.40	191.3	-244.6	348.0	327.0	21.03	16.552	
4,500.0	4,475.8	4,461.9	4,450.4	11.8	11.1	126.38	126.38	198.5	-248.7	362.9	341.3	21.56	16.831	
4,600.0	4,574.8	4,560.6	4,548.7	12.1	11.3	127.28	127.28	205.8	-252.8	377.8	355.7	22.09	17.101	
4,700.0	4,673.8	4,659.3	4,647.1	12.4	11.6	128.12	128.12	213.0	-256.8	392.7	370.1	22.62	17.363	
4,800.0	4,772.8	4,758.0	4,745.5	12.8	11.9	128.90	128.90	220.2	-260.9	407.8	384.7	23.15	17.616	
4,900.0	4,871.8	4,856.7	4,843.8	13.1	12.1	129.62	129.62	227.4	-265.0	422.9	399.3	23.68	17.860	
5,000.0	4,970.8	4,955.4	4,942.2	13.5	12.4	130.29	130.29	234.6	-269.1	438.1	413.9	24.21	18.096	

CC - Min centre to center distance or convergent point, SF - min separation factor, ES - min ellipse separation

<b>Company:</b>	Synergy Resources	<b>Local Co-ordinate Reference:</b>	Well SRC Union 12HZN
<b>Project:</b>	SEC.5-T2N-R68W	<b>TVD Reference:</b>	WELL @ 4978.0ft (RKB - 13')
<b>Reference Site:</b>	SRC Union Pad Sec.5-T2N-R68W	<b>MD Reference:</b>	WELL @ 4978.0ft (RKB - 13')
<b>Site Error:</b>	0.0ft	<b>North Reference:</b>	True
<b>Reference Well:</b>	SRC Union 12HZN	<b>Survey Calculation Method:</b>	Minimum Curvature
<b>Well Error:</b>	0.0ft	<b>Output errors are at</b>	2.00 sigma
<b>Reference Wellbore</b>	Wellbore #1	<b>Database:</b>	Landmark
<b>Reference Design:</b>	Plan #2 (4-08-13)	<b>Offset TVD Reference:</b>	Offset Datum

Offset Design													Offset Site Error:	0.0 ft
SRC Union Pad Sec.5-T2N-R68W - SRC Union 5FD - Wellbore #1 - Plan #1 (1-03-13)													Offset Well Error:	0.0 ft
Survey Program: 0-MWD														
Reference		Offset		Semi Major Axis			Distance							
Measured Depth (ft)	Vertical Depth (ft)	Measured Depth (ft)	Vertical Depth (ft)	Reference (ft)	Offset (ft)	Highside Toolface (°)	Offset Wellbore Centre +N/-S (ft)	+E/-W (ft)	Between Centres (ft)	Between Ellipses (ft)	Minimum Separation (ft)	Separation Factor	Warning	
5,100.0	5,069.8	5,054.2	5,040.6	13.8	12.7	130.91	241.9	-273.2	453.4	428.7	24.74	18.325		
5,200.0	5,168.8	5,152.9	5,138.9	14.1	12.9	131.50	249.1	-277.3	468.7	443.4	25.27	18.545		
5,300.0	5,267.8	5,251.6	5,237.3	14.5	13.2	132.04	256.3	-281.4	484.0	458.2	25.80	18.758		
5,400.0	5,366.8	5,350.3	5,335.7	14.8	13.5	132.56	263.5	-285.4	499.4	473.1	26.34	18.964		
5,500.0	5,465.9	5,449.1	5,434.1	15.1	13.7	133.12	270.8	-289.5	514.3	487.4	26.87	19.139		
5,600.0	5,565.4	5,548.3	5,533.0	15.4	14.0	133.43	278.0	-293.6	526.9	499.5	27.36	19.254		
5,700.0	5,665.2	5,647.8	5,632.1	15.6	14.3	133.43	285.3	-297.8	537.1	509.3	27.84	19.294		
5,800.0	5,765.2	5,747.4	5,731.3	15.7	14.5	133.13	292.6	-301.9	544.9	516.7	28.29	19.265		
5,900.0	5,865.2	5,847.0	5,830.6	15.9	14.8	15.94	299.9	-306.0	551.0	522.6	28.33	19.450		
6,000.0	5,965.2	5,946.7	5,929.9	16.1	15.1	15.32	307.2	-310.1	556.9	528.2	28.74	19.377		
6,100.0	6,065.2	6,046.3	6,029.2	16.2	15.3	14.72	314.4	-314.2	562.9	533.8	29.16	19.307		
6,200.0	6,165.2	6,146.0	6,128.5	16.4	15.6	14.13	321.7	-318.4	569.0	539.4	29.57	19.238		
6,300.0	6,265.2	6,245.6	6,227.8	16.6	15.9	13.55	329.0	-322.5	575.1	545.1	30.00	19.172		
6,400.0	6,365.2	6,345.3	6,327.1	16.7	16.2	12.99	336.3	-326.6	581.3	550.9	30.42	19.108		
6,500.0	6,465.2	6,444.9	6,426.4	16.9	16.4	12.44	343.6	-330.7	587.5	556.7	30.85	19.045		
6,600.0	6,564.8	6,543.9	6,525.0	17.0	16.7	-78.82	350.8	-334.8	592.4	560.6	31.78	18.644		
6,700.0	6,661.3	6,638.9	6,619.7	17.0	17.0	-81.39	357.8	-338.8	594.6	562.5	32.04	18.559		
6,800.0	6,751.0	6,726.5	6,707.0	16.9	17.2	-85.19	364.2	-342.4	596.6	564.3	32.23	18.511		
6,900.0	6,830.8	6,803.5	6,783.7	16.8	17.4	-89.23	369.8	-345.6	602.2	569.9	32.38	18.598		
7,000.0	6,897.7	6,867.0	6,847.0	16.8	17.6	-92.34	374.5	-348.2	615.8	583.2	32.58	18.902		
7,100.0	6,949.1	6,914.7	6,894.5	17.0	17.7	-93.43	378.0	-350.2	640.5	607.5	32.99	19.415		
7,200.0	6,983.3	6,944.8	6,924.5	17.5	17.8	-91.67	380.2	-351.4	677.8	644.0	33.79	20.058		
7,300.0	6,999.0	6,956.3	6,936.0	18.5	17.8	-86.54	381.0	-351.9	726.8	691.9	34.86	20.851		
7,400.0	7,000.0	6,953.1	6,932.8	19.8	17.8	-83.90	380.8	-351.8	784.9	748.8	36.09	21.749		
7,500.0	7,000.0	6,948.9	6,928.6	21.4	17.8	-83.51	380.5	-351.6	850.8	813.1	37.67	22.582		
7,600.0	7,000.0	6,944.7	6,924.4	23.3	17.8	-83.12	380.2	-351.4	922.8	883.3	39.48	23.373		
7,700.0	7,000.0	6,940.5	6,920.2	25.3	17.8	-82.73	379.9	-351.2	999.6	958.1	41.46	24.111		

<b>Company:</b>	Synergy Resources	<b>Local Co-ordinate Reference:</b>	Well SRC Union 12HZN
<b>Project:</b>	SEC.5-T2N-R68W	<b>TVD Reference:</b>	WELL @ 4978.0ft (RKB - 13')
<b>Reference Site:</b>	SRC Union Pad Sec.5-T2N-R68W	<b>MD Reference:</b>	WELL @ 4978.0ft (RKB - 13')
<b>Site Error:</b>	0.0ft	<b>North Reference:</b>	True
<b>Reference Well:</b>	SRC Union 12HZN	<b>Survey Calculation Method:</b>	Minimum Curvature
<b>Well Error:</b>	0.0ft	<b>Output errors are at</b>	2.00 sigma
<b>Reference Wellbore</b>	Wellbore #1	<b>Database:</b>	Landmark
<b>Reference Design:</b>	Plan #2 (4-08-13)	<b>Offset TVD Reference:</b>	Offset Datum

Offset Design													Offset Site Error:	0.0 ft
Survey Program: 0-MWD													Offset Well Error:	0.0 ft
Reference		Offset		Semi Major Axis			Distance							Warning
Measured Depth (ft)	Vertical Depth (ft)	Measured Depth (ft)	Vertical Depth (ft)	Reference (ft)	Offset (ft)	Highside Toolface (°)	Offset Wellbore Centre +N/-S (ft)	+E/-W (ft)	Between Centres (ft)	Between Ellipses (ft)	Minimum Separation (ft)	Separation Factor		
0.0	0.0	0.0	0.0	0.0	0.0	-111.26	-7.3	-18.7	20.1					
100.0	100.0	99.0	99.0	0.1	0.1	-111.26	-7.3	-18.7	20.1	19.9	0.22	89.839		
200.0	200.0	199.0	199.0	0.3	0.3	-111.26	-7.3	-18.7	20.1	19.4	0.67	29.896		
300.0	300.0	299.4	299.4	0.6	0.6	-108.84	-6.2	-18.1	19.1	18.0	1.12	17.018		
400.0	400.0	399.6	399.5	0.8	0.8	-99.79	-2.8	-16.1	16.3	14.8	1.58	10.361		
500.0	500.0	499.6	499.3	1.0	1.0	-77.40	2.9	-12.8	13.1	11.1	2.03	6.457		
547.2	547.2	546.7	546.2	1.1	1.1	-59.78	6.3	-10.8	12.5	10.3	2.25	5.557 CC, ES		
600.0	600.0	599.2	598.5	1.2	1.3	-37.54	10.7	-8.2	13.5	11.0	2.50	5.409 SF		
700.0	700.0	698.2	696.8	1.5	1.6	-6.60	20.8	-2.4	21.0	18.0	3.01	6.971		
800.0	800.0	796.6	794.2	1.7	1.9	8.07	32.9	4.7	33.6	30.0	3.55	9.464		
900.0	900.0	894.1	890.3	1.9	2.2	15.35	47.1	12.9	49.6	45.5	4.10	12.082		
1,000.0	1,000.0	990.8	985.2	2.1	2.6	19.44	63.2	22.3	68.4	63.8	4.68	14.612		
1,100.0	1,100.0	1,086.4	1,078.5	2.4	3.0	21.99	81.2	32.8	89.9	84.7	5.29	16.997		
1,200.0	1,200.0	1,181.0	1,170.2	2.6	3.4	23.69	101.0	44.3	114.0	108.0	5.93	19.226		
1,300.0	1,300.0	1,274.7	1,260.6	2.8	3.9	24.88	122.5	56.8	140.4	133.8	6.59	21.307		
1,400.0	1,400.0	1,370.8	1,353.0	3.0	4.4	25.75	145.3	70.1	167.8	160.5	7.28	23.040		
1,500.0	1,500.0	1,467.0	1,445.5	3.3	4.9	26.38	168.2	83.4	195.2	187.2	7.98	24.458		
1,600.0	1,600.0	1,563.1	1,537.9	3.5	5.4	26.85	191.0	96.7	222.6	214.0	8.68	25.637		
1,700.0	1,700.0	1,659.3	1,630.4	3.7	5.9	27.22	213.9	110.0	250.1	240.7	9.39	26.630		
1,800.0	1,800.0	1,755.4	1,722.8	3.9	6.5	27.52	236.7	123.3	277.5	267.4	10.10	27.478		
1,900.0	1,900.0	1,851.2	1,814.8	4.1	7.0	144.22	259.4	136.5	306.4	297.7	8.66	35.369		
2,000.0	1,999.8	1,946.0	1,906.0	4.3	7.5	144.56	281.9	149.6	337.9	328.8	9.08	37.200		
2,100.0	2,099.5	2,039.7	1,996.2	4.5	8.0	145.06	304.2	162.6	372.2	362.7	9.50	39.194		
2,200.0	2,198.7	2,132.4	2,085.2	4.7	8.5	145.67	326.2	175.4	409.3	399.4	9.90	41.335		
2,300.0	2,297.7	2,224.3	2,173.6	5.0	9.0	146.68	348.1	188.1	447.9	437.6	10.35	43.286		
2,400.0	2,396.7	2,316.3	2,262.0	5.2	9.5	147.54	369.9	200.8	486.7	475.9	10.81	45.037		
2,500.0	2,495.7	2,408.2	2,350.5	5.5	10.1	148.28	391.7	213.6	525.5	514.3	11.27	46.621		
2,600.0	2,594.7	2,500.2	2,438.9	5.8	10.6	148.92	413.6	226.3	564.4	552.7	11.74	48.059		
2,700.0	2,693.7	2,592.1	2,527.3	6.0	11.1	149.48	435.4	239.0	603.4	591.2	12.22	49.368		
2,800.0	2,792.7	2,684.1	2,615.7	6.3	11.6	149.96	457.3	251.7	642.4	629.7	12.70	50.563		
2,900.0	2,891.7	2,776.0	2,704.1	6.6	12.1	150.40	479.1	264.4	681.4	668.2	13.19	51.658		
3,000.0	2,990.7	2,868.0	2,792.5	6.9	12.6	150.78	501.0	277.1	720.5	706.8	13.68	52.664		
3,100.0	3,089.7	2,959.9	2,880.9	7.2	13.1	151.13	522.8	289.8	759.6	745.4	14.17	53.591		
3,200.0	3,188.7	3,051.9	2,969.3	7.5	13.6	151.44	544.6	302.5	798.7	784.0	14.67	54.446		
3,300.0	3,287.7	3,143.8	3,057.7	7.8	14.1	151.72	566.5	315.3	837.8	822.6	15.17	55.238		
3,400.0	3,386.8	3,235.8	3,146.2	8.1	14.7	151.98	588.3	328.0	876.9	861.3	15.67	55.973		
3,500.0	3,485.8	3,327.8	3,234.6	8.5	15.2	152.22	610.2	340.7	916.1	899.9	16.17	56.657		
3,600.0	3,584.8	3,419.7	3,323.0	8.8	15.7	152.44	632.0	353.4	955.2	938.6	16.67	57.294		
3,700.0	3,683.8	3,511.7	3,411.4	9.1	16.2	152.64	653.8	366.1	994.4	977.2	17.18	57.889		

<b>Company:</b>	Synergy Resources	<b>Local Co-ordinate Reference:</b>	Well SRC Union 12HZN
<b>Project:</b>	SEC.5-T2N-R68W	<b>TVD Reference:</b>	WELL @ 4978.0ft (RKB - 13')
<b>Reference Site:</b>	SRC Union Pad Sec.5-T2N-R68W	<b>MD Reference:</b>	WELL @ 4978.0ft (RKB - 13')
<b>Site Error:</b>	0.0ft	<b>North Reference:</b>	True
<b>Reference Well:</b>	SRC Union 12HZN	<b>Survey Calculation Method:</b>	Minimum Curvature
<b>Well Error:</b>	0.0ft	<b>Output errors are at</b>	2.00 sigma
<b>Reference Wellbore</b>	Wellbore #1	<b>Database:</b>	Landmark
<b>Reference Design:</b>	Plan #2 (4-08-13)	<b>Offset TVD Reference:</b>	Offset Datum

Reference Depths are relative to WELL @ 4978.0ft (RKB - 13')

Offset Depths are relative to Offset Datum

Central Meridian is -105.500000 °

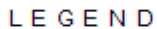
Coordinates are relative to: SRC Union 12HZN





Coordinate System is US State Plane 1983, Colorado Northern Zone

Grid Convergence at Surface is: 0.30°



Reference Depths are relative to WELL @ 4978.0ft (RKB - 13')	Coordinates are relative to: SRC Union 12HZN
Offset Depths are relative to Offset Datum	Coordinate System is US State Plane 1983, Colorado Northern Zone
Central Meridian is -105.500000 °	Grid Convergence at Surface is: 0.30°



Inlon 5AHZC, Wellbore #1, Plan #2 (4-08-13) V0		SRC Union 11HZN, Wellbore #1, Plan #2 (4-08-13) V0		SRC Union 11HZC, Wellbore #1, Plan #2 (4-08-13) V0
Inlon 12HZC, Wellbore #1, Plan #2 (4-08-13) V0		SRC Union 11-5D, Wellbore #1, Plan #1 (1-03-13) V0		SRC Union 5JD, Wellbore #1, Plan #1 (1-03-13) V0
Inlon 5AHZN, Wellbore #1, Plan #2 (4-08-13) V0		SRC Union 5FD, Wellbore #1, Plan #1 (1-03-13) V0		SRC Union 12-5D, Wellbore #1, Plan #1 (1-03-13) V0