

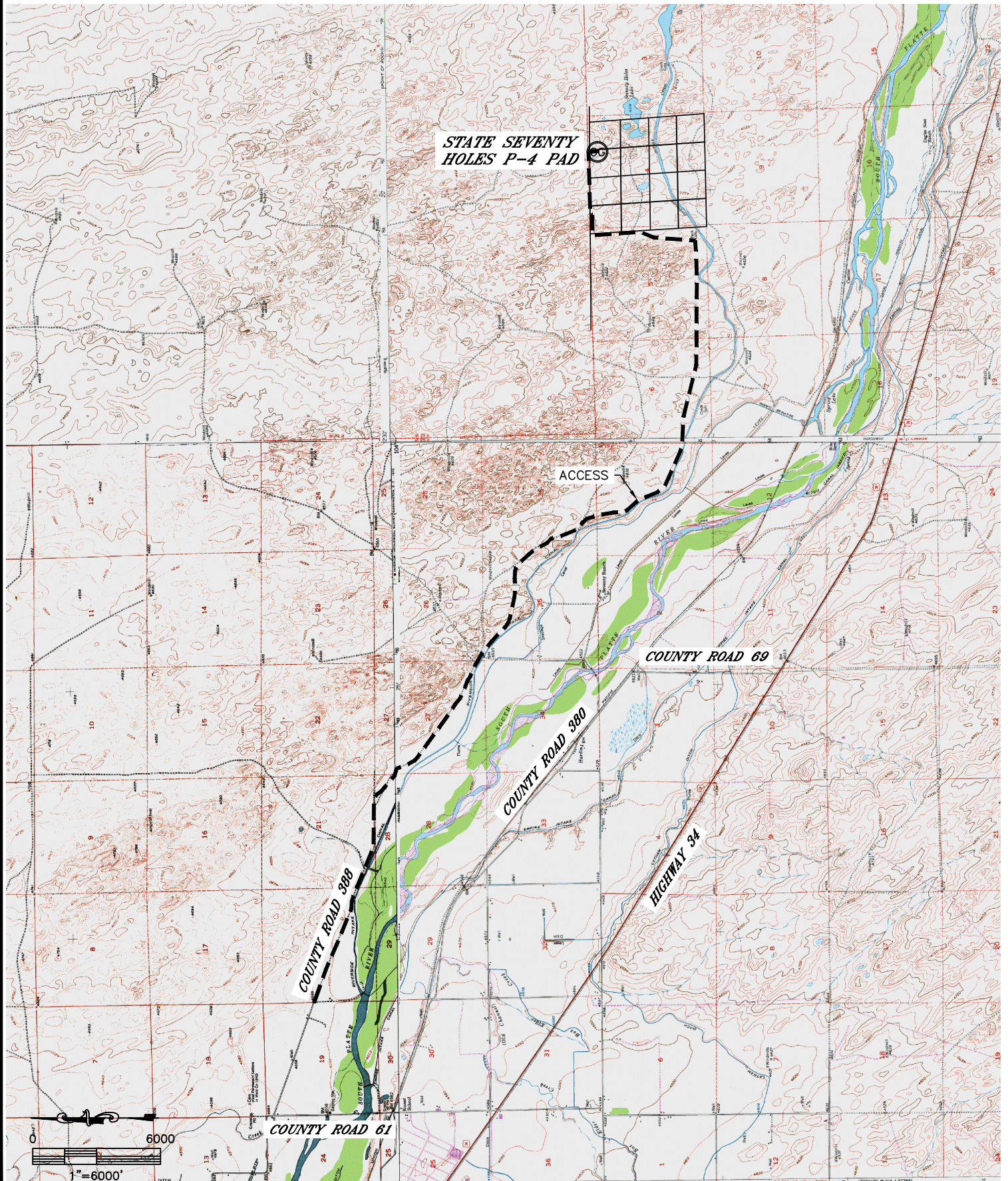


Lat40°, Inc. 1635 Foxtrail Drive, Suite 325 Loveland, CO 970-776-3321

# ACCESS ROAD MAP

STATE SEVENTY HOLES P-4 PAD

SECTION: 4  
TOWNSHIP: 4N  
RANGE: 62W



DATE: 2/26/2013  
PROJECT#: 2012179