



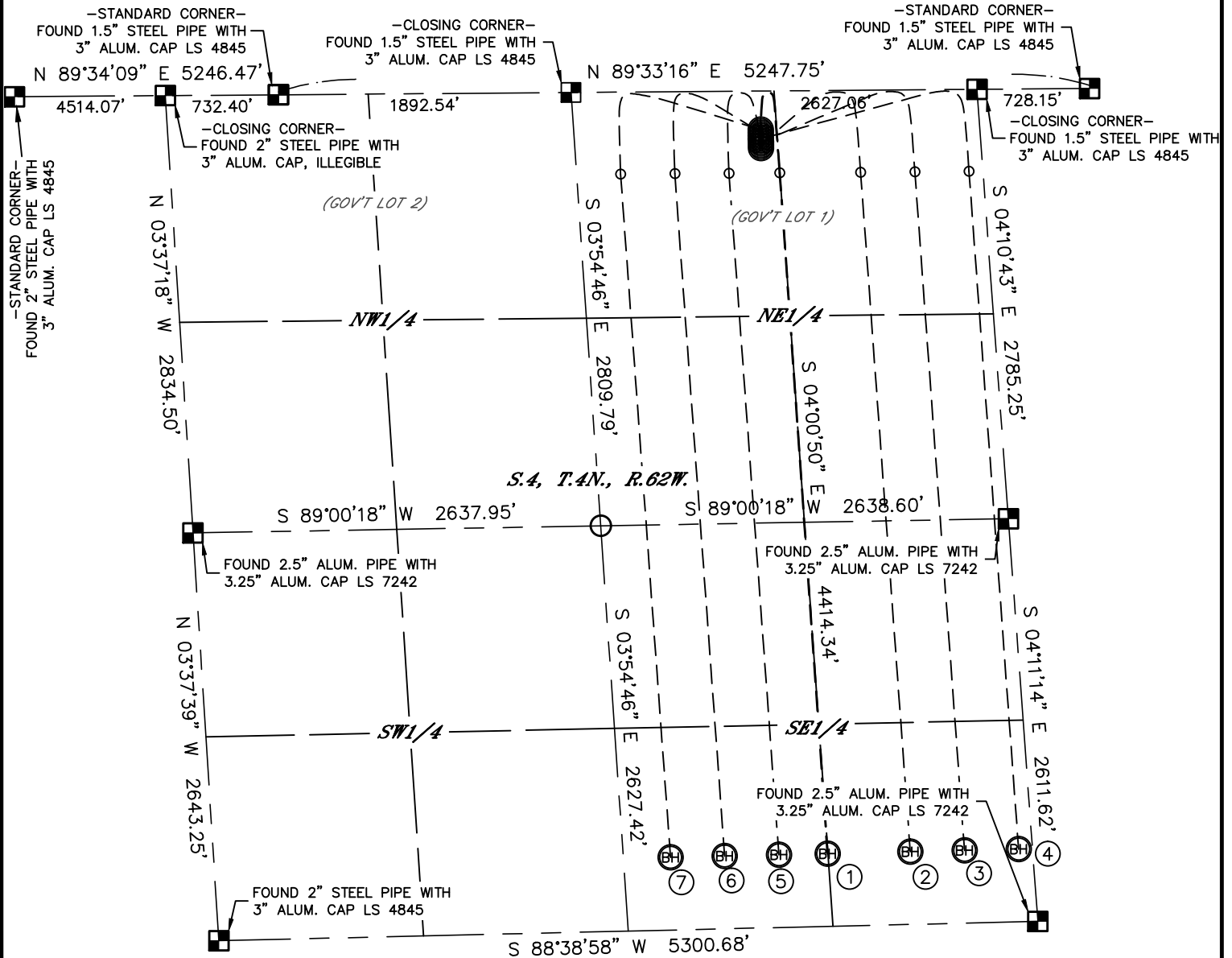
Lat40°, Inc. 1635 Foxtrail Drive, Suite 325 Loveland, CO 970-776-3321

MULTI-WELL PLAN

STATE SEVENTY HOLES P-4 PAD

THIS MAP DOES NOT REPRESENT A BOUNDARY SURVEY

SECTION: 4
TOWNSHIP: 4N
RANGE: 62W



①

—SURFACE LOCATION—
STATE SEVENTY HOLES
P-T-4HNB
370' FNL
1423' FEL
LAT: 40.34788°N
LONG: 104.32713°W

②

—SURFACE LOCATION—
STATE SEVENTY HOLES
A2-04
350' FNL
1421' FEL
LAT: 40.34794°N
LONG: 104.32713°W

③

—SURFACE LOCATION—
STATE SEVENTY HOLES
A3-04
330' FNL
1420' FEL
LAT: 40.34799°N
LONG: 104.32713°W

④

—SURFACE LOCATION—
STATE SEVENTY HOLES
A4-04
310' FNL
1419' FEL
LAT: 40.34805°N
LONG: 104.32713°W

⑤

—SURFACE LOCATION—
STATE SEVENTY HOLES
A5-04
290' FNL
1418' FEL
LAT: 40.34810°N
LONG: 104.32713°W

⑥

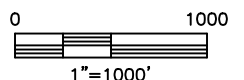
—SURFACE LOCATION—
STATE SEVENTY HOLES
A6-04
270' FNL
1416' FEL
LAT: 40.34816°N
LONG: 104.32713°W

⑦

—SURFACE LOCATION—
STATE SEVENTY HOLES
A7-04
250' FNL
1415' FEL
LAT: 40.34821°N
LONG: 104.32713°W

LEGEND

- = ALIQUOT MONUMENT AS DESCRIBED
○ = CALCULATED POSITION



DATE: rev.3/7/2013
PROJECT#: 2012179



Lat40°, Inc. 1635 Foxtrail Drive, Suite 325 Loveland, CO 970-776-3321

MULTI-WELL PLAN
STATE SEVENTY HOLES P-4 PAD

SECTION: 4
TOWNSHIP: 4N
RANGE: 62W

