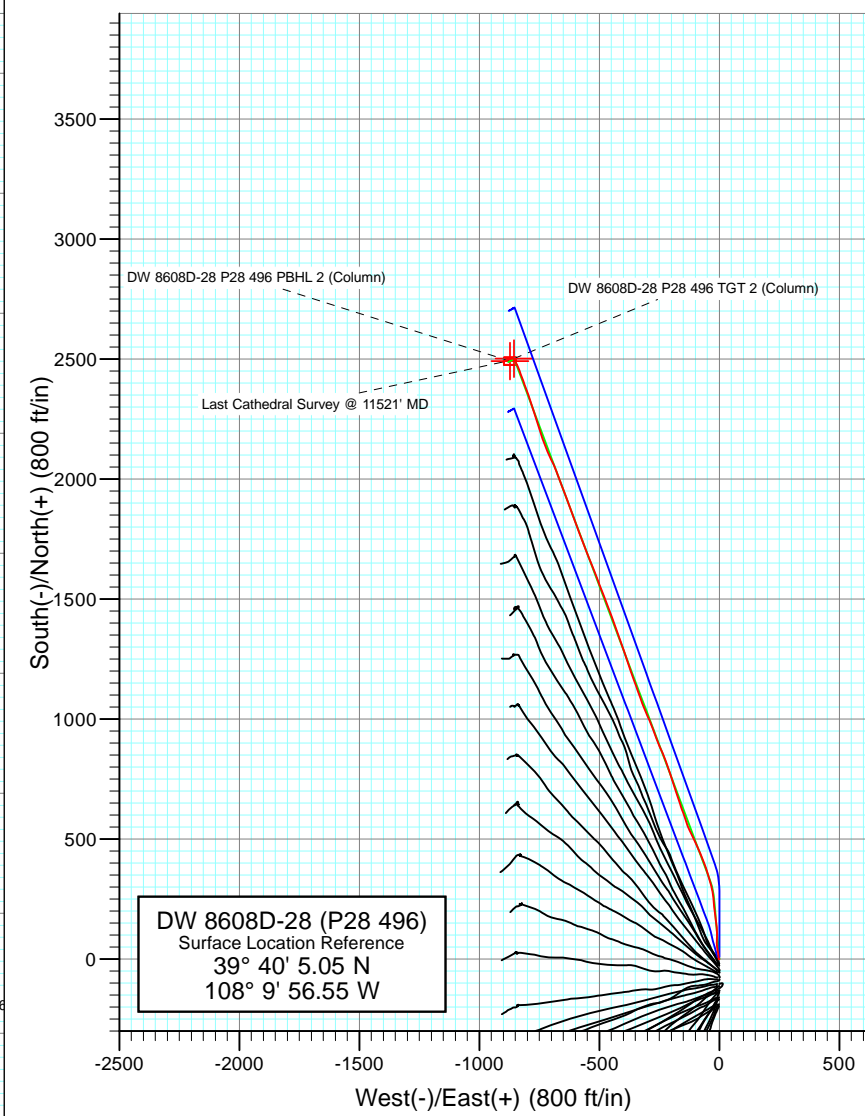
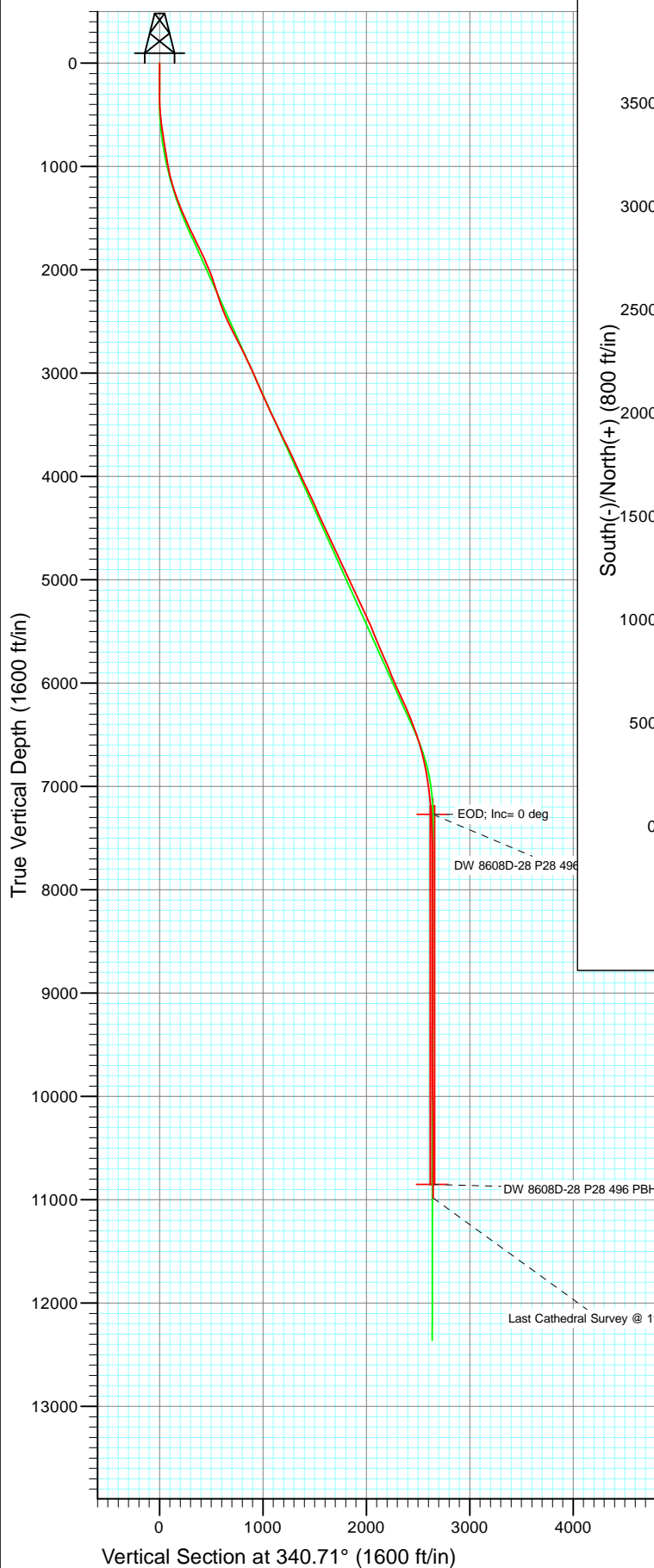




Project: Double Willow
 Site: S28-T4S-R96W (P28 496)(column pattern)
 Well: DW 8608D-28 (P28 496)
 Wellbore: DD
 Design: Final Survey



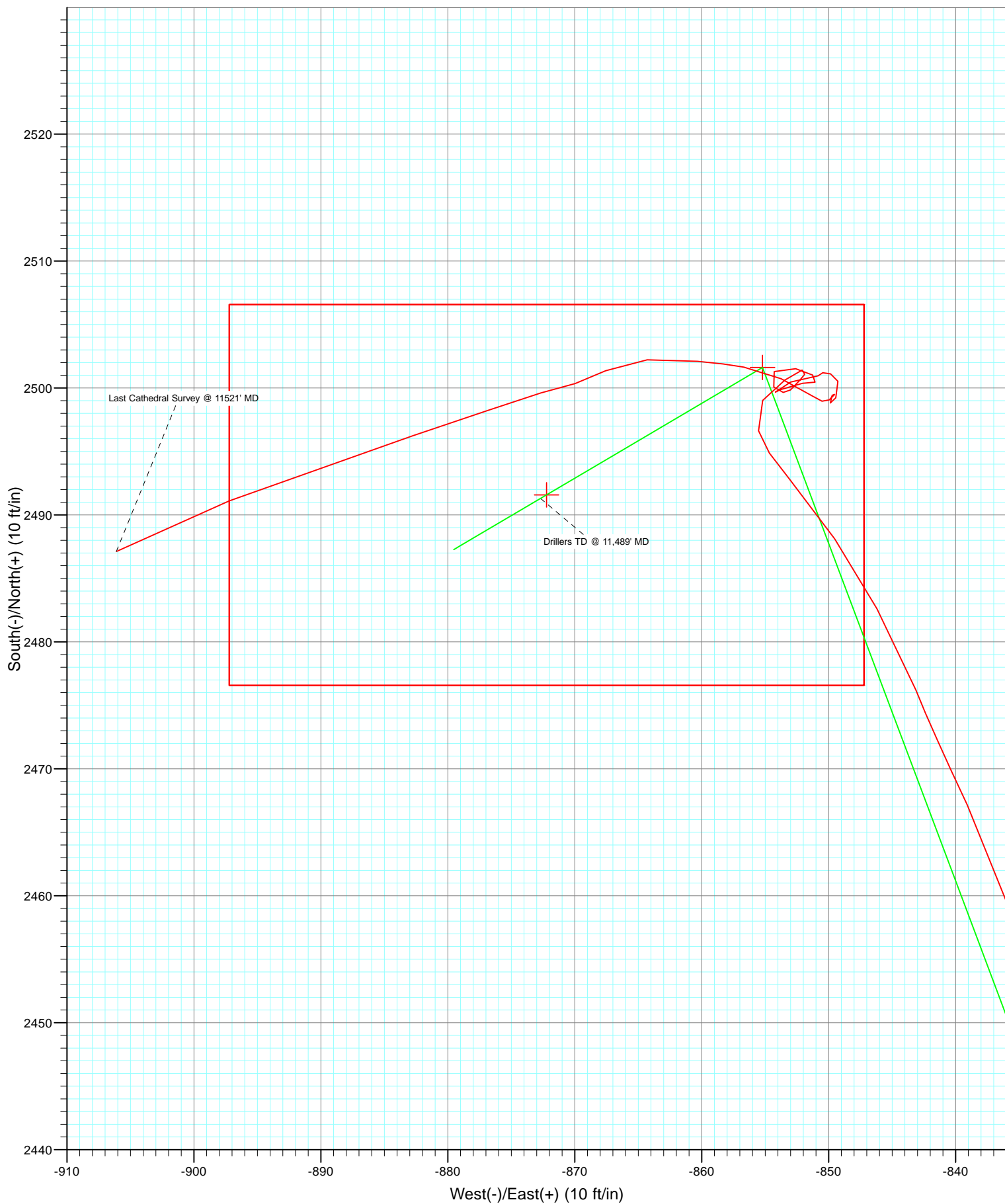
Azimuths to True North
 Magnetic North: 10.33°

Magnetic Field
 Strength: 52212.2nT
 Dip Angle: 65.82°
 Date: 5/23/2012
 Model: IGRF2010

DD
 DW 8608D-28 (P28 496)
 125072/138855 (SH) 125136/143255 (MH); SC

KBE @ 7813.0ft (Patterson 308)
 North American Datum 1983
 Well DW 8608D-28 (P28 496), True North

Type	Target	Azimuth	Origin Type	N/S	E/W	From TVD
Target	DW 8608D-28 P28 496 PBHL (Column)	340.71	Slot	0.0	0.0	0.0
Name	TVD	+N/-S	+E/-W	Latitude	Longitude	
DW 8608D-28 P28 496 TGT 2 (Column)	7271.0	2501.6	-855.2	39° 40' 29.77 N 108° 10' 7.49 W		
DW 8608D-28 P28 496 PBHL 2 (Column)	10851.0	2491.6	-872.2	39° 40' 29.67 N 108° 10' 7.70 W		



Cathedral Energy Services

Survey Report

Company:	EnCana Oil & Gas (USA) Inc	Local Co-ordinate Reference:	Well DW 8608D-28 (P28 496)
Project:	Double Willow	TVD Reference:	KBE @ 7813.0ft (Patterson 308)
Site:	S28-T4S-R96W (P28 496)(column pattern)	MD Reference:	KBE @ 7813.0ft (Patterson 308)
Well:	DW 8608D-28 (P28 496)	North Reference:	True
Wellbore:	DD	Survey Calculation Method:	Minimum Curvature
Design:	DD	Database:	USA EDM 5000 Multi Users DB

Project	Double Willow		
Map System:	US State Plane 1983	System Datum:	Mean Sea Level
Geo Datum:	North American Datum 1983		
Map Zone:	Colorado Central Zone		

Site	S28-T4S-R96W (P28 496)(column pattern)			
Site Position:		Northing:	1,679,243.29 ft	Latitude: 39° 40' 5.13 N
From:	Lat/Long	Easting:	2,249,687.54 ft	Longitude: 108° 9' 56.55 W
Position Uncertainty:	0.0 ft	Slot Radius:	13.200 in	Grid Convergence: -1.68 °

Well	DW 8608D-28 (P28 496)			
Well Position	+N/-S	0.0 ft	Northing:	1,679,235.21 ft
	+E/-W	0.0 ft	Easting:	2,249,687.30 ft
Position Uncertainty	0.0 ft	Wellhead Elevation:	ft	Ground Level: 7,780.0 ft

Wellbore	DD				
Magnetics	Model Name	Sample Date	Declination (°)	Dip Angle (°)	Field Strength (nT)
	IGRF2010	5/23/2012	10.33	65.82	52,212

Design	DD			
Audit Notes:				
Version:	1.0	Phase:	ACTUAL	Tie On Depth: 0.0
Vertical Section:	Depth From (TVD) (ft)	+N/-S (ft)	+E/-W (ft)	Direction (°)
	0.0	0.0	0.0	340.71

Survey Program	Date	6/4/2012		
From (ft)	To (ft)	Survey (Wellbore)	Tool Name	Description
170.0	11,521.0	Survey #1 (DD)	MWD	Geolink MWD

Survey									
Measured Depth (ft)	Inclination (°)	Azimuth (°)	Vertical Depth (ft)	+N/-S (ft)	+E/-W (ft)	Vertical Section (ft)	Dogleg Rate (°/100ft)	Build Rate (°/100ft)	Formations / Comments
0.0	0.00	0.00	0.0	0.0	0.0	0.0	0.00	0.00	
170.0	0.80	278.10	170.0	0.2	-1.2	0.5	0.47	0.47	
200.0	0.20	191.30	200.0	0.1	-1.4	0.6	2.71	-2.00	
231.0	0.10	156.90	231.0	0.1	-1.4	0.5	0.42	-0.32	
261.0	0.50	233.30	261.0	0.0	-1.5	0.5	1.62	1.33	
292.0	0.50	319.40	292.0	0.0	-1.7	0.5	2.20	0.00	
323.0	0.80	345.00	323.0	0.3	-1.8	0.9	1.32	0.97	
353.0	0.80	329.70	353.0	0.7	-2.0	1.3	0.71	0.00	
384.0	1.30	346.50	384.0	1.2	-2.2	1.9	1.88	1.61	
414.0	2.40	346.60	414.0	2.2	-2.4	2.8	3.67	3.67	
445.0	3.70	354.60	444.9	3.8	-2.6	4.4	4.40	4.19	
475.0	4.50	357.30	474.8	5.9	-2.8	6.5	2.74	2.67	
506.0	4.90	359.00	505.7	8.5	-2.9	8.9	1.37	1.29	

Cathedral Energy Services

Survey Report

Company:	EnCana Oil & Gas (USA) Inc	Local Co-ordinate Reference:	Well DW 8608D-28 (P28 496)
Project:	Double Willow	TVD Reference:	KBE @ 7813.0ft (Patterson 308)
Site:	S28-T4S-R96W (P28 496)(column pattern)	MD Reference:	KBE @ 7813.0ft (Patterson 308)
Well:	DW 8608D-28 (P28 496)	North Reference:	True
Wellbore:	DD	Survey Calculation Method:	Minimum Curvature
Design:	DD	Database:	USA EDM 5000 Multi Users DB

Survey

Measured Depth (ft)	Inclination (°)	Azimuth (°)	Vertical Depth (ft)	+N/-S (ft)	+E/-W (ft)	Vertical Section (ft)	Dogleg Rate (°/100ft)	Build Rate (°/100ft)	Formations / Comments
555.0	5.80	348.00	554.5	13.0	-3.4	13.4	2.78	1.84	
600.0	7.70	355.00	599.2	18.2	-4.2	18.6	4.59	4.22	
646.0	8.90	350.80	644.7	24.8	-5.0	25.0	2.92	2.61	
692.0	9.90	348.70	690.1	32.2	-6.3	32.5	2.30	2.17	
738.0	9.90	347.60	735.4	39.9	-8.0	40.3	0.41	0.00	
783.0	9.90	356.70	779.8	47.6	-9.0	47.9	3.47	0.00	
829.0	9.10	357.30	825.1	55.1	-9.4	55.2	1.75	-1.74	
875.0	8.80	355.50	870.6	62.3	-9.9	62.0	0.89	-0.65	
921.0	8.90	357.80	916.0	69.3	-10.3	68.8	0.80	0.22	
967.0	10.00	1.50	961.4	76.9	-10.3	76.0	2.73	2.39	
1,012.0	11.70	2.50	1,005.6	85.4	-10.0	83.9	3.80	3.78	
1,058.0	13.10	2.50	1,050.5	95.2	-9.6	93.0	3.04	3.04	
1,104.0	14.20	359.80	1,095.2	106.1	-9.4	103.2	2.76	2.39	
1,150.0	15.40	356.10	1,139.7	117.8	-9.8	114.4	3.32	2.61	
1,195.0	17.00	354.90	1,182.9	130.3	-10.8	126.6	3.63	3.56	
1,241.0	18.40	353.20	1,226.7	144.2	-12.3	140.2	3.24	3.04	
1,287.0	20.20	352.30	1,270.1	159.3	-14.2	155.0	3.97	3.91	
1,333.0	20.80	352.70	1,313.2	175.3	-16.3	170.8	1.34	1.30	
1,379.0	21.30	352.90	1,356.2	191.7	-18.4	187.0	1.10	1.09	
1,424.0	22.30	354.50	1,397.9	208.3	-20.2	203.3	2.58	2.22	
1,470.0	23.50	354.40	1,440.3	226.1	-21.9	220.6	2.61	2.61	
1,516.0	24.50	354.50	1,482.3	244.7	-23.7	238.8	2.18	2.17	
1,562.0	24.40	352.90	1,524.2	263.6	-25.8	257.4	1.46	-0.22	
1,607.0	25.00	349.50	1,565.1	282.2	-28.7	275.9	3.43	1.33	
1,699.0	26.20	344.50	1,648.1	320.9	-37.7	315.3	2.69	1.30	
1,791.0	26.10	342.40	1,730.7	359.8	-49.2	355.8	1.01	-0.11	
1,882.0	25.60	340.10	1,812.6	397.3	-62.0	395.5	1.23	-0.55	
1,973.0	24.40	336.50	1,895.0	433.1	-76.1	433.9	2.13	-1.32	
2,080.0	22.90	335.90	1,993.0	472.3	-93.5	476.7	1.42	-1.40	
2,168.0	19.40	334.50	2,075.1	501.2	-106.7	508.3	4.02	-3.98	
2,259.0	18.10	332.40	2,161.3	527.3	-119.8	537.3	1.61	-1.43	
2,351.0	16.90	340.30	2,249.0	552.6	-130.9	564.8	2.89	-1.30	
2,443.0	19.80	341.70	2,336.3	580.0	-140.3	593.8	3.19	3.15	
2,534.0	22.00	339.80	2,421.3	610.6	-151.1	626.2	2.53	2.42	
2,625.0	25.20	341.60	2,504.7	645.0	-163.1	662.7	3.60	3.52	
2,717.0	28.00	342.10	2,587.0	684.2	-175.9	703.8	3.05	3.04	
2,809.0	27.10	342.20	2,668.5	724.7	-188.9	746.4	0.98	-0.98	
2,900.0	26.40	341.60	2,749.8	763.6	-201.7	787.3	0.82	-0.77	
2,992.0	25.20	341.20	2,832.6	801.5	-214.4	827.4	1.32	-1.30	
3,083.0	27.00	337.80	2,914.4	839.0	-228.5	867.4	2.57	1.98	
3,175.0	23.80	335.70	2,997.5	875.3	-244.0	906.7	3.61	-3.48	
3,266.0	22.30	339.80	3,081.2	908.2	-257.5	942.3	2.41	-1.65	
3,357.0	23.00	338.90	3,165.2	941.0	-269.9	977.3	0.86	0.77	
3,449.0	24.80	337.60	3,249.3	975.6	-283.7	1,014.6	2.04	1.96	
3,540.0	26.00	337.50	3,331.5	1,011.7	-298.6	1,053.5	1.32	1.32	
3,632.0	25.00	337.40	3,414.5	1,048.3	-313.8	1,093.1	1.09	-1.09	
3,723.0	25.90	340.30	3,496.7	1,084.7	-327.9	1,132.2	1.69	0.99	
3,815.0	25.10	341.00	3,579.7	1,122.1	-341.0	1,171.8	0.93	-0.87	
3,906.0	27.00	339.90	3,661.5	1,159.8	-354.4	1,211.7	2.15	2.09	
3,997.0	25.30	339.00	3,743.2	1,197.3	-368.5	1,251.8	1.92	-1.87	
4,089.0	25.10	342.60	3,826.4	1,234.3	-381.4	1,291.0	1.68	-0.22	
4,180.0	25.60	341.80	3,908.7	1,271.4	-393.3	1,329.9	0.67	0.55	
4,272.0	23.30	340.80	3,992.4	1,307.4	-405.5	1,368.0	2.54	-2.50	

Cathedral Energy Services

Survey Report

Company:	EnCana Oil & Gas (USA) Inc	Local Co-ordinate Reference:	Well DW 8608D-28 (P28 496)
Project:	Double Willow	TVD Reference:	KBE @ 7813.0ft (Patterson 308)
Site:	S28-T4S-R96W (P28 496)(column pattern)	MD Reference:	KBE @ 7813.0ft (Patterson 308)
Well:	DW 8608D-28 (P28 496)	North Reference:	True
Wellbore:	DD	Survey Calculation Method:	Minimum Curvature
Design:	DD	Database:	USA EDM 5000 Multi Users DB

Survey									
Measured Depth (ft)	Inclination (°)	Azimuth (°)	Vertical Depth (ft)	+N/-S (ft)	+E/-W (ft)	Vertical Section (ft)	Dogleg Rate (°/100ft)	Build Rate (°/100ft)	Formations / Comments
4,364.0	25.70	340.30	4,076.1	1,343.4	-418.2	1,406.1	2.62	2.61	
4,455.0	25.10	341.20	4,158.3	1,380.3	-431.0	1,445.2	0.78	-0.66	
4,546.0	25.50	339.10	4,240.6	1,416.8	-444.3	1,484.0	1.08	0.44	
4,638.0	22.30	337.90	4,324.7	1,451.5	-457.9	1,521.3	3.52	-3.48	
4,730.0	24.60	340.10	4,409.1	1,485.7	-471.0	1,557.9	2.67	2.50	
4,821.0	26.00	338.70	4,491.4	1,522.1	-484.7	1,596.7	1.67	1.54	
4,913.0	23.80	338.70	4,574.8	1,558.2	-498.7	1,635.5	2.39	-2.39	
5,004.0	26.30	338.80	4,657.2	1,594.1	-512.7	1,674.0	2.75	2.75	
5,096.0	25.30	338.90	4,740.1	1,631.4	-527.1	1,714.0	1.09	-1.09	
5,187.0	23.70	339.20	4,822.9	1,666.7	-540.6	1,751.7	1.76	-1.76	
5,279.0	26.10	338.60	4,906.3	1,702.8	-554.6	1,790.4	2.62	2.61	
5,370.0	24.30	337.40	4,988.6	1,738.7	-569.1	1,829.1	2.06	-1.98	
5,462.0	26.00	339.40	5,071.9	1,775.1	-583.5	1,868.2	2.07	1.85	
5,554.0	24.40	340.00	5,155.2	1,811.8	-597.1	1,907.3	1.76	-1.74	
5,645.0	24.20	340.70	5,238.1	1,847.1	-609.7	1,944.8	0.39	-0.22	
5,737.0	26.60	339.00	5,321.2	1,884.1	-623.3	1,984.2	2.73	2.61	
5,828.0	25.20	340.80	5,403.1	1,921.4	-636.9	2,024.0	1.76	-1.54	
5,920.0	21.30	339.00	5,487.6	1,955.5	-649.4	2,060.3	4.31	-4.24	
6,011.0	21.50	339.00	5,572.3	1,986.5	-661.3	2,093.5	0.22	0.22	
6,103.0	23.10	339.60	5,657.4	2,019.2	-673.6	2,128.4	1.76	1.74	
6,195.0	25.30	336.60	5,741.3	2,054.2	-687.7	2,166.0	2.74	2.39	
6,286.0	22.40	333.90	5,824.5	2,087.6	-703.1	2,202.6	3.40	-3.19	
6,378.0	21.50	336.00	5,909.9	2,118.7	-717.6	2,236.9	1.30	-0.98	
6,470.0	23.90	340.80	5,994.8	2,151.7	-730.6	2,272.3	3.29	2.61	
6,561.0	25.90	341.90	6,077.3	2,188.0	-742.9	2,310.6	2.26	2.20	
6,653.0	24.30	341.50	6,160.6	2,225.1	-755.1	2,349.6	1.75	-1.74	
6,745.0	23.30	342.40	6,244.8	2,260.4	-766.6	2,386.7	1.16	-1.09	
6,836.0	21.80	342.80	6,328.8	2,293.7	-777.1	2,421.6	1.66	-1.65	
6,928.0	21.30	342.40	6,414.4	2,325.9	-787.2	2,455.4	0.57	-0.54	
7,020.0	18.40	339.70	6,500.9	2,355.5	-797.3	2,486.6	3.31	-3.15	
7,111.0	16.50	339.00	6,587.7	2,381.0	-806.9	2,513.9	2.10	-2.09	
7,202.0	14.90	341.20	6,675.3	2,404.2	-815.3	2,538.5	1.88	-1.76	
7,294.0	12.00	339.80	6,764.8	2,424.3	-822.4	2,559.9	3.17	-3.15	
7,385.0	10.80	337.70	6,854.0	2,441.1	-828.9	2,577.9	1.40	-1.32	
7,477.0	8.10	341.20	6,944.7	2,455.2	-834.2	2,593.0	3.00	-2.93	
7,569.0	8.00	334.70	7,035.8	2,467.2	-839.1	2,605.8	0.99	-0.11	
7,660.0	4.50	338.10	7,126.3	2,476.2	-843.1	2,615.7	3.87	-3.85	
7,752.0	4.40	330.50	7,218.0	2,482.6	-846.2	2,622.8	0.65	-0.11	
7,806.3	3.98	328.61	7,272.2	2,486.0	-848.2	2,626.7	0.81	-0.77	DW 8608D-28 P28 496 TGT 2 (Column)
7,843.0	3.70	327.10	7,308.8	2,488.1	-849.5	2,629.1	0.81	-0.76	
7,935.0	3.70	318.60	7,400.6	2,492.8	-853.1	2,634.7	0.60	0.00	
8,026.0	2.10	343.00	7,491.5	2,496.6	-855.5	2,639.1	2.18	-1.76	
8,118.0	1.40	46.40	7,583.4	2,499.0	-855.2	2,641.2	2.10	-0.76	
8,209.0	1.60	48.20	7,674.4	2,500.6	-853.4	2,642.2	0.23	0.22	
8,301.0	0.50	100.30	7,766.4	2,501.4	-852.1	2,642.5	1.47	-1.20	
8,392.0	0.40	214.90	7,857.4	2,501.1	-851.9	2,642.1	0.83	-0.11	
8,484.0	0.40	223.60	7,949.4	2,500.6	-852.3	2,641.8	0.07	0.00	
8,575.0	0.90	224.10	8,040.4	2,499.8	-853.0	2,641.3	0.55	0.55	
8,666.0	1.40	312.70	8,131.4	2,500.1	-854.3	2,642.0	1.81	0.55	
8,758.0	1.20	62.70	8,223.3	2,501.3	-854.3	2,643.1	2.32	-0.22	
8,849.0	1.10	103.50	8,314.3	2,501.5	-852.6	2,642.7	0.89	-0.11	
8,941.0	0.70	121.60	8,406.3	2,501.0	-851.3	2,641.8	0.53	-0.43	
9,032.0	0.50	226.70	8,497.3	2,500.5	-851.1	2,641.2	1.06	-0.22	

Cathedral Energy Services

Survey Report

Company:	EnCana Oil & Gas (USA) Inc	Local Co-ordinate Reference:	Well DW 8608D-28 (P28 496)
Project:	Double Willow	TVD Reference:	KBE @ 7813.0ft (Patterson 308)
Site:	S28-T4S-R96W (P28 496)(column pattern)	MD Reference:	KBE @ 7813.0ft (Patterson 308)
Well:	DW 8608D-28 (P28 496)	North Reference:	True
Wellbore:	DD	Survey Calculation Method:	Minimum Curvature
Design:	DD	Database:	USA EDM 5000 Multi Users DB

Survey									
Measured Depth (ft)	Inclination (°)	Azimuth (°)	Vertical Depth (ft)	+N/-S (ft)	+E/-W (ft)	Vertical Section (ft)	Dogleg Rate (°/100ft)	Build Rate (°/100ft)	Formations / Comments
9,124.0	0.90	284.90	8,589.3	2,500.4	-852.1	2,641.5	0.83	0.43	
9,216.0	1.60	237.40	8,681.3	2,499.9	-853.8	2,641.6	1.30	0.76	
9,307.0	1.10	54.60	8,772.3	2,499.7	-854.2	2,641.5	2.97	-0.55	
9,399.0	0.70	61.00	8,864.3	2,500.5	-853.0	2,641.9	0.45	-0.43	
9,490.0	1.00	88.50	8,955.3	2,500.8	-851.7	2,641.7	0.55	0.33	
9,576.0	0.30	34.80	9,041.3	2,501.0	-850.8	2,641.6	1.00	-0.81	
9,668.0	0.30	80.20	9,133.3	2,501.2	-850.5	2,641.7	0.25	0.00	
9,759.0	0.50	109.70	9,224.3	2,501.1	-849.8	2,641.4	0.31	0.22	
9,851.0	0.60	154.90	9,316.2	2,500.5	-849.3	2,640.7	0.47	0.11	
9,942.0	1.20	203.30	9,407.2	2,499.2	-849.4	2,639.5	1.01	0.66	
10,034.0	0.60	354.40	9,499.2	2,498.8	-849.9	2,639.3	1.90	-0.65	
10,125.0	0.30	55.30	9,590.2	2,499.4	-849.7	2,639.8	0.58	-0.33	
10,217.0	0.10	183.60	9,682.2	2,499.5	-849.5	2,639.8	0.40	-0.22	
10,308.0	0.70	230.90	9,773.2	2,499.1	-850.0	2,639.5	0.70	0.66	
10,400.0	1.40	307.00	9,865.2	2,499.4	-851.3	2,640.3	1.53	0.76	
10,492.0	2.10	293.40	9,957.2	2,500.7	-853.7	2,642.4	0.88	0.76	
10,583.0	1.80	280.20	10,048.1	2,501.6	-856.7	2,644.2	0.59	-0.33	
10,675.0	2.80	275.20	10,140.0	2,502.1	-860.3	2,645.8	1.11	1.09	
10,766.0	2.20	267.30	10,231.0	2,502.2	-864.3	2,647.3	0.76	-0.66	
10,858.0	2.10	242.40	10,322.9	2,501.4	-867.6	2,647.5	1.01	-0.11	
10,949.0	1.20	255.50	10,413.9	2,500.4	-870.0	2,647.4	1.07	-0.99	
11,041.0	2.30	254.50	10,505.8	2,499.6	-872.7	2,647.6	1.20	1.20	
11,132.0	3.20	249.70	10,596.7	2,498.2	-876.8	2,647.6	1.02	0.99	
11,224.0	4.70	252.50	10,688.5	2,496.2	-882.8	2,647.7	1.64	1.63	
11,385.2	4.88	248.96	10,849.2	2,491.8	-895.5	2,647.7	0.21	0.11	DW 8608D-28 P28 496 PBHL 2 (Column)
11,407.0	4.90	248.50	10,870.8	2,491.1	-897.2	2,647.7	0.21	0.11	
11,521.0	4.90	243.20	10,984.4	2,487.1	-906.1	2,646.8	0.40	0.00	Last Cathedral Survey @ 11521' MD

Cathedral Energy Services

Survey Report

Company:	EnCana Oil & Gas (USA) Inc	Local Co-ordinate Reference:	Well DW 8608D-28 (P28 496)
Project:	Double Willow	TVD Reference:	KBE @ 7813.0ft (Patterson 308)
Site:	S28-T4S-R96W (P28 496)(column pattern)	MD Reference:	KBE @ 7813.0ft (Patterson 308)
Well:	DW 8608D-28 (P28 496)	North Reference:	True
Wellbore:	DD	Survey Calculation Method:	Minimum Curvature
Design:	DD	Database:	USA EDM 5000 Multi Users DB

Targets									
Target Name	Dip Angle	Dip Dir.	TVD	+N/-S	+E/-W	Northing	Easting	Latitude	Longitude
- hit/miss target	(°)	(°)	(ft)	(ft)	(ft)	(ft)	(ft)		
- Shape									
DW 8608D-28 P28 496 `	0.00	0.00	7,211.0	2,501.6	-855.2	1,681,760.84	2,248,905.87	39° 40' 29.77 N	108° 10' 7.49 W
- actual wellpath misses target center by 21.5ft at 7746.6ft MD (7212.7 TVD, 2482.3 N, -846.0 E)									
- Point									
DW 8608D-28 P28 496 I	0.00	0.00	10,851.0	2,491.6	-872.2	1,681,751.31	2,248,888.56	39° 40' 29.67 N	108° 10' 7.70 W
- actual wellpath misses target center by 23.4ft at 11385.2ft MD (10849.2 TVD, 2491.8 N, -895.5 E)									
- Rectangle (sides W30.0 H50.0 D0.0)									
DW 8608D-28 P28 496 `	0.00	0.00	7,271.0	2,501.6	-855.2	1,681,760.84	2,248,905.87	39° 40' 29.77 N	108° 10' 7.49 W
- actual wellpath misses target center by 17.1ft at 7806.3ft MD (7272.2 TVD, 2486.0 N, -848.2 E)									
- Point									
DW 8608D-28 P28 496 I	0.00	0.00	10,871.0	2,491.6	-872.2	1,681,751.31	2,248,888.56	39° 40' 29.67 N	108° 10' 7.70 W
- actual wellpath misses target center by 25.0ft at 11405.2ft MD (10869.0 TVD, 2491.2 N, -897.1 E)									
- Rectangle (sides W30.0 H50.0 D0.0)									

Design Annotations				
Measured Depth	Vertical Depth	Local Coordinates		
(ft)	(ft)	+N/-S (ft)	+E/-W (ft)	Comment
11,521.0	10,984.4	2,487.1	-906.1	Last Cathedral Survey @ 11521' MD

Checked By: _____ Approved By: _____ Date: _____