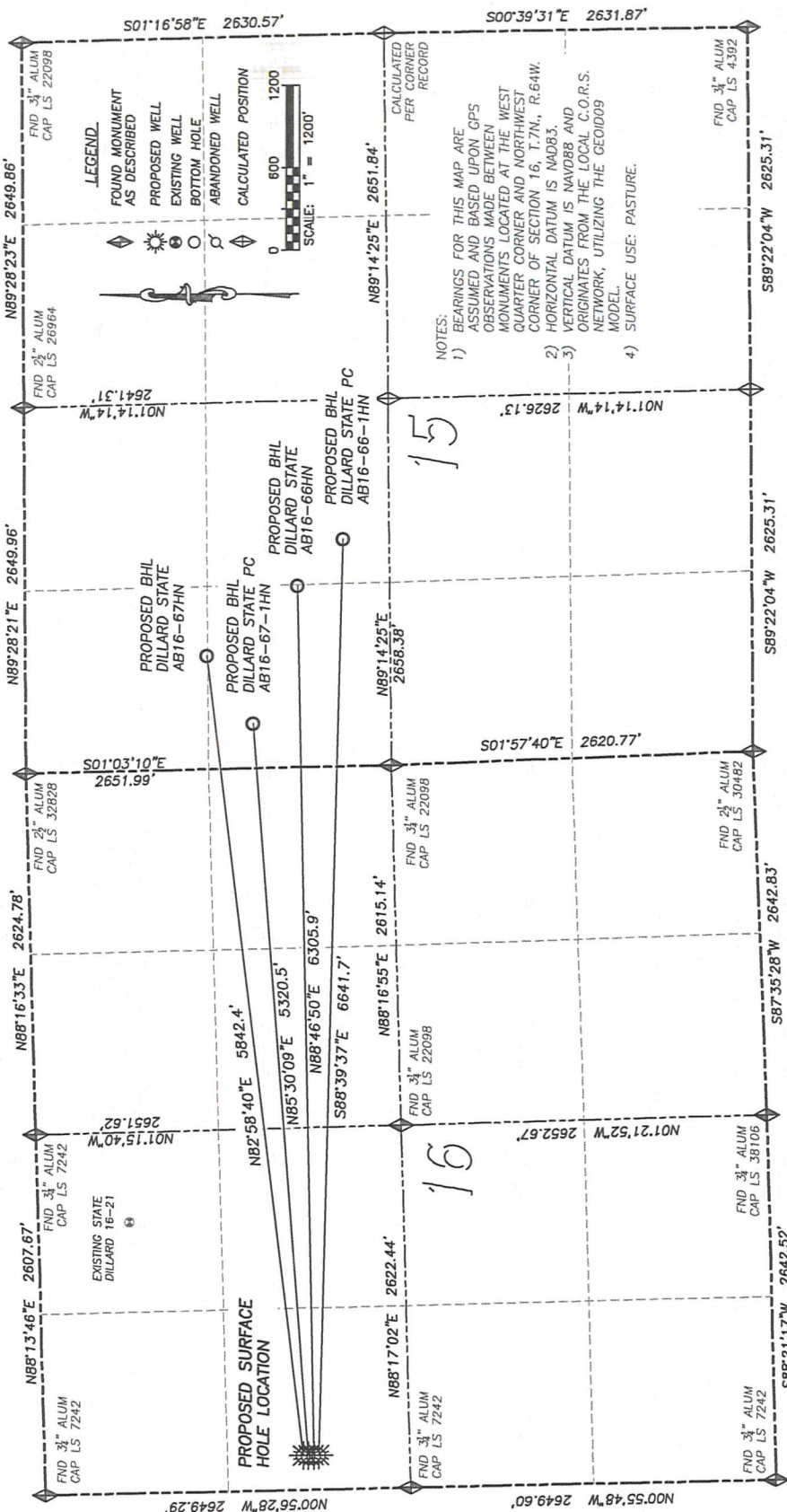


DILLARD STATE AB16-67HN, DILLARD STATE PC AB16-67-1HN,
DILLARD STATE AB16-66HN & DILLARD STATE PC AB16-66-1HN

SECTION 16, TOWNSHIP 7 NORTH, RANGE 64 WEST OF THE 6TH PRINCIPAL MERIDIAN



Well Name		Qtr - Qtr	Footage	Latitude	Longitude	Elevation	
DILLARD STATE AB16-67HN	SHL	SW NW 16	1875' FNL	250' FWL	40.57505	-104.56311	4941
	BHL	NW NW 15	1320' FNL	825' FWL	40.57684	-104.54221	
	SHL	SW NW 16	1912' FNL	250' FWL	40.57494	-104.56311	4940
	BHL	SW NW 15	1650' FNL	325' FWL	40.57593	-104.54401	
DILLARD STATE AB16-66HN	SHL	SW NW 16	1950' FNL	250' FWL	40.57484	-104.56311	4938
	BHL	SW NW 15	1980' FNL	1320' FWL	40.57502	-104.54042	
	SHL	SW NW 16	1987' FNL	250' FWL	40.57474	-104.56311	4938
	BHL	SE NW 15	2310' FNL	1650' FWL	40.57411	-104.53922	

NOTICE: According to Colorado law you **MUST** commence any legal action based upon any defect in this W.L.C. within three years after you first discover such defect. In no event may any action based upon any such defect in this W.L.C. be commenced more than ten years from the date of the certification shown hereon.

DALEY LAND SURVEYING, INC.

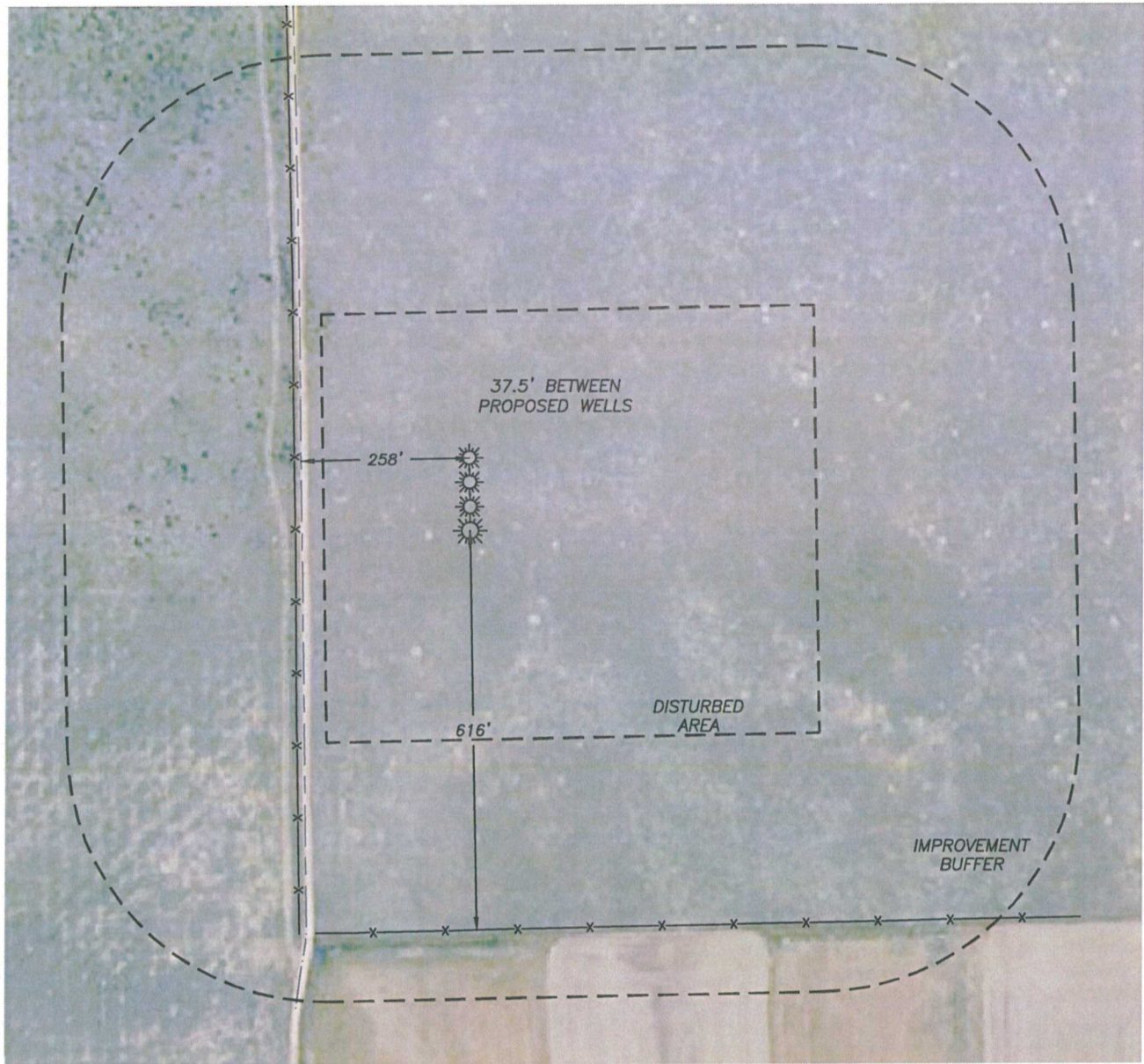
PARKER, CO. 80134

303 953 9841

MULTI-WELL PAD LOCATION DRAWING

DILLARD STATE AB16-67HN, DILLARD STATE PC AB16-67-1HN,
DILLARD STATE AB16-66HN & DILLARD STATE PC AB16-66-1HN

SECTION 16, TOWNSHIP 7 NORTH, RANGE 64 WEST OF THE 6TH PRINCIPAL MERIDIAN



WELL ORDER NORTH TO SOUTH

DILLARD STATE AB16-67HN
DILLARD STATE PC AB16-67-1HN
DILLARD STATE AB16-66HN
DILLARD STATE PC AB16-66-1HN

