

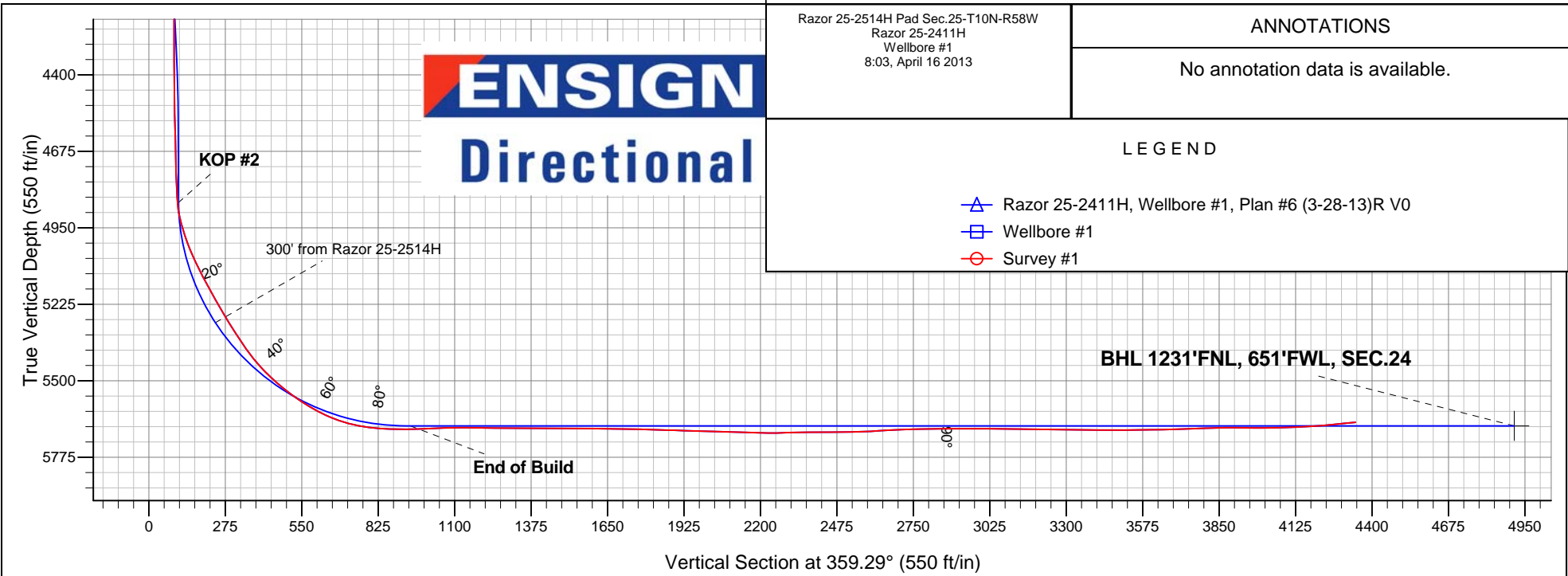
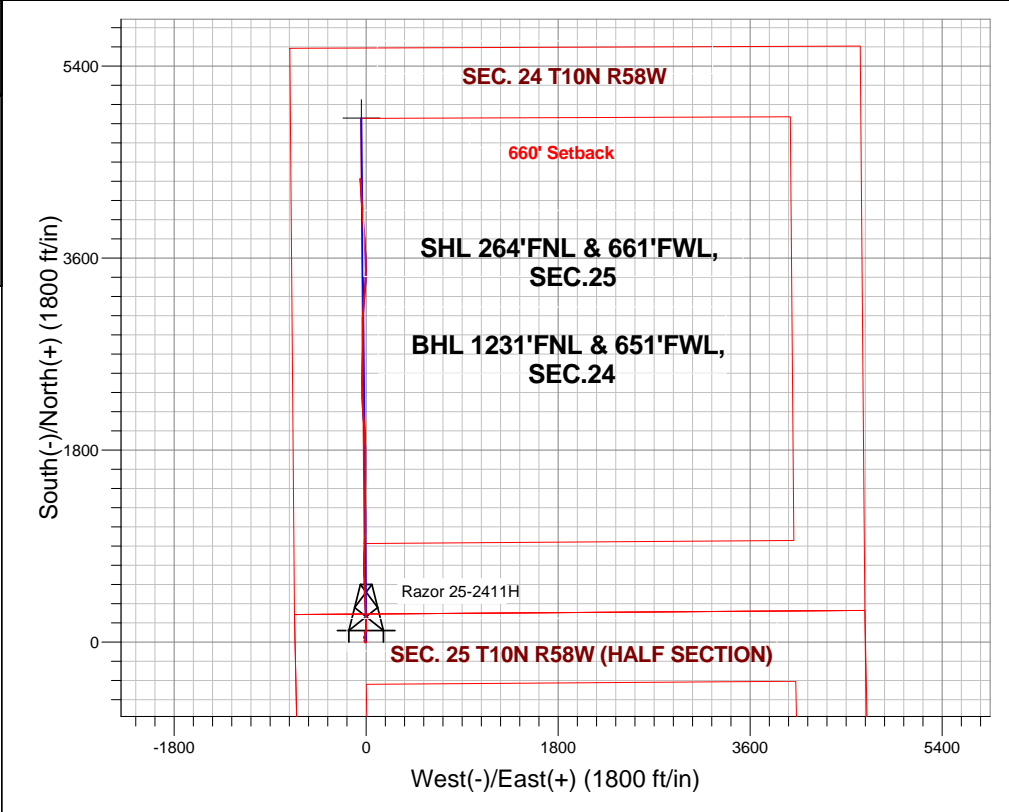
Whiting Oil & Gas

Well Name: Razor 25-2411H						
Surface Location: Razor 25-2514H Pad Sec.25-T10N-R58W						
North American Datum 1983 , US State Plane 1983 , Colorado Northern Zone						
Ground Elevation: 4761.2						
+N/-S	+E/-W	Northing	Easting	Latitude	Longitude	Slot
0.0	0.0	1544615.10	3464882.70	40.816264	-103.820411	
Original Well Elev WELL @ 4777.7ft (Original Well Elev)						

Well Name: Razor 25-2411H						
Surface Location: Razor 25-2514H Pad Sec.25-T10N-R58W						
North American Datum 1983 , US State Plane 1983 , Colorado Northern Zone						
Ground Elevation: 4761.2						
+N/-S	+E/-W	Northing	Easting	Latitude	Longitude	Slot
0.0	0.0	1544615.10	3464882.70	40.816264	-103.820411	
Original Well Elev WELL @ 4777.7ft (Original Well Elev)						

FINAL SURVEY

Projected Bottom Hole Location
9541' MD 5650' TVD 4340' N & 54' W of SHL
95.5 degree Incl @ 356.5 degree AZM



ANNOTATIONS	
	No annotation data is available.

ANNOTATIONS	
	No annotation data is available.

ANNOTATIONS	
	No annotation data is available.

L E G E N D

—△— Razor 25-2411H, Wellbore #1, Plan #6 (3-28-13)R V0
—□— Wellbore #1
—○— Survey #1

L E G E N D

—△— Razor 25-2411H, Wellbore #1, Plan #6 (3-28-13)R V0
—□— Wellbore #1
—○— Survey #1



Whiting Oil & Gas

SEC.25-T10N-R58W

Razor 25-2514H Pad Sec.25-T10N-R58W

Razor 25-2411H

Wellbore #1

Survey: Survey #1

Standard Survey Report

16 April, 2013

Company:	Whiting Oil & Gas	Local Co-ordinate Reference:	Well Razor 25-2411H
Project:	SEC.25-T10N-R58W	TVD Reference:	WELL @ 4777.7ft (Original Well Elev)
Site:	Razor 25-2514H Pad Sec.25-T10N-R58W	MD Reference:	WELL @ 4777.7ft (Original Well Elev)
Well:	Razor 25-2411H	North Reference:	True
Wellbore:	Wellbore #1	Survey Calculation Method:	Minimum Curvature
Design:	Wellbore #1	Database:	Landmark

Project	SEC.25-T10N-R58W, Weld County, Colorado		
Map System:	US State Plane 1983	System Datum:	Mean Sea Level
Geo Datum:	North American Datum 1983		Using Well Reference Point
Map Zone:	Colorado Northern Zone		Using geodetic scale factor

Site		Razor 25-2514H Pad Sec.25-T10N-R58W			
Position:		Northing:		1,544,564.48 ft	
From:		Easting:		3,464,883.65 ft	
Position Uncertainty:		Slot Radius:		"	
Lat/Long		Grid Convergence:		40.816125	
0.0 ft				-103.820411	
				1.09 °	

Well	Razor 25-2411H					
Well Position	+N/-S	0.0 ft	Northing:	1,544,615.10 ft	Latitude:	40.816264
	+E/-W	0.0 ft	Easting:	3,464,882.70 ft	Longitude:	-103.820411
Position Uncertainty		0.0 ft	Wellhead Elevation:	ft	Ground Level:	4,761.2 ft

Wellbore	Wellbore #1				
Magnetics	Model Name	Sample Date	Declination (°)	Dip Angle (°)	Field Strength (nT)
	IGRF2010	3/28/2013	8.14	67.47	53,257

Design	Wellbore #1			
Audit Notes:				
Version:	1.0	Phase:	ACTUAL	Tie On Depth: 0.0
Vertical Section:	Depth From (TVD) (ft)	+N/-S (ft)	+E/-W (ft)	Direction (°)
	0.0	0.0	0.0	359.29

Survey Program		Date	4/9/2013		
From (ft)	To (ft)	Survey (Wellbore)	Tool Name	Description	
105.0	9,541.0	Survey #1 (Wellbore #1)	MWD	MWD - Standard	

Survey										
	Measured Depth (ft)	Inclination (°)	Azimuth (°)	Vertical Depth (ft)	+N/-S (ft)	+E/-W (ft)	Vertical Section (ft)	Dogleg Rate (°/100ft)	Build Rate (°/100ft)	Turn Rate (°/100ft)
Survey Data	0.0	0.00	0.00	0.0	0.0	0.0	0.0	0.00	0.00	0.00
	105.0	1.30	236.00	105.0	-0.7	-1.0	-0.7	1.24	1.24	0.00
	192.0	1.30	257.80	192.0	-1.4	-2.8	-1.4	0.57	0.00	25.06
	283.0	0.80	268.80	283.0	-1.7	-4.4	-1.6	0.59	-0.55	12.09
	375.0	1.00	280.40	374.9	-1.5	-5.8	-1.5	0.29	0.22	12.61
	467.0	1.00	268.70	466.9	-1.4	-7.4	-1.3	0.22	0.00	-12.72
	560.0	0.60	253.70	559.9	-1.6	-8.7	-1.4	0.48	-0.43	-16.13
	655.0	0.90	256.20	654.9	-1.9	-9.9	-1.7	0.32	0.32	2.63
	749.0	0.90	325.40	748.9	-1.4	-11.1	-1.3	1.09	0.00	73.62
	844.0	1.00	306.30	843.9	-0.3	-12.1	-0.2	0.35	0.11	-20.11
	939.0	1.10	341.80	938.9	1.0	-13.1	1.2	0.68	0.11	37.37
	1,033.0	1.20	337.90	1,032.9	2.8	-13.8	3.0	0.14	0.11	-4.15
	1,128.0	1.20	331.60	1,127.8	4.6	-14.6	4.8	0.14	0.00	-6.63

Company:	Whiting Oil & Gas	Local Co-ordinate Reference:	Well Razor 25-2411H
Project:	SEC.25-T10N-R58W	TVD Reference:	WELL @ 4777.7ft (Original Well Elev)
Site:	Razor 25-2514H Pad Sec.25-T10N-R58W	MD Reference:	WELL @ 4777.7ft (Original Well Elev)
Well:	Razor 25-2411H	North Reference:	True
Wellbore:	Wellbore #1	Survey Calculation Method:	Minimum Curvature
Design:	Wellbore #1	Database:	Landmark

Survey

Measured Depth (ft)	Inclination (°)	Azimuth (°)	Vertical Depth (ft)	+N/-S (ft)	+E/-W (ft)	Vertical Section (ft)	Dogleg Rate (°/100ft)	Build Rate (°/100ft)	Turn Rate (°/100ft)
1,223.0	0.70	3.40	1,222.8	6.0	-15.0	6.2	0.75	-0.53	33.47
1,317.0	1.20	3.80	1,316.8	7.6	-14.9	7.8	0.53	0.53	0.43
1,412.0	1.60	1.30	1,411.8	9.9	-14.8	10.1	0.43	0.42	-2.63
1,507.0	2.00	9.40	1,506.7	12.9	-14.5	13.1	0.50	0.42	8.53
1,625.0	1.80	43.50	1,624.7	16.3	-12.9	16.4	0.96	-0.17	28.90
1,713.0	1.10	40.10	1,712.6	17.9	-11.4	18.0	0.80	-0.80	-3.86
1,806.0	0.90	61.60	1,805.6	18.9	-10.2	19.1	0.45	-0.22	23.12
1,896.0	2.60	355.10	1,895.6	21.3	-9.8	21.4	2.65	1.89	-73.89
1,987.0	2.50	333.20	1,986.5	25.1	-10.8	25.3	1.07	-0.11	-24.07
2,078.0	1.00	349.00	2,077.5	27.7	-11.9	27.8	1.72	-1.65	17.36
2,169.0	1.20	332.80	2,168.4	29.3	-12.5	29.5	0.40	0.22	-17.80
2,264.0	1.40	315.40	2,263.4	31.0	-13.7	31.2	0.46	0.21	-18.32
2,359.0	2.60	336.50	2,358.4	33.8	-15.4	34.0	1.46	1.26	22.21
2,454.0	3.30	330.50	2,453.2	38.2	-17.6	38.4	0.80	0.74	-6.32
2,549.0	2.60	333.00	2,548.1	42.5	-19.9	42.7	0.75	-0.74	2.63
2,644.0	0.90	30.80	2,643.1	45.0	-20.5	45.3	2.37	-1.79	60.84
2,739.0	1.40	45.20	2,738.0	46.5	-19.3	46.7	0.60	0.53	15.16
2,834.0	1.60	40.30	2,833.0	48.3	-17.7	48.5	0.25	0.21	-5.16
2,929.0	1.60	33.60	2,928.0	50.4	-16.1	50.6	0.20	0.00	-7.05
3,024.0	1.80	23.60	3,022.9	52.9	-14.7	53.1	0.38	0.21	-10.53
3,119.0	1.80	28.40	3,117.9	55.6	-13.4	55.8	0.16	0.00	5.05
3,214.0	1.80	35.40	3,212.8	58.1	-11.9	58.3	0.23	0.00	7.37
3,309.0	1.80	29.80	3,307.8	60.6	-10.2	60.8	0.19	0.00	-5.89
3,403.0	1.80	6.70	3,401.7	63.4	-9.3	63.5	0.77	0.00	-24.57
3,498.0	2.40	3.90	3,496.7	66.8	-9.0	67.0	0.64	0.63	-2.95
3,593.0	2.50	13.80	3,591.6	70.8	-8.4	70.9	0.46	0.11	10.42
3,689.0	2.20	6.20	3,687.5	74.7	-7.7	74.8	0.45	-0.31	-7.92
3,783.0	1.90	0.10	3,781.5	78.1	-7.5	78.1	0.39	-0.32	-6.49
3,877.0	2.10	341.40	3,875.4	81.3	-8.1	81.3	0.72	0.21	-19.89
3,972.0	2.60	332.30	3,970.3	84.8	-9.6	84.9	0.66	0.53	-9.58
4,067.0	2.50	320.70	4,065.2	88.3	-11.9	88.5	0.55	-0.11	-12.21
4,164.0	1.10	303.80	4,162.2	90.5	-14.0	90.6	1.53	-1.44	-17.42
4,259.0	0.70	127.00	4,257.2	90.6	-14.3	90.8	1.89	-0.42	-186.11
4,354.0	1.80	73.50	4,352.2	90.7	-12.4	90.9	1.57	1.16	-56.32
4,449.0	2.00	80.60	4,447.1	91.4	-9.4	91.5	0.32	0.21	7.47
4,544.0	2.10	44.00	4,542.0	92.9	-6.5	93.0	1.36	0.11	-38.53
4,639.0	2.00	49.00	4,637.0	95.3	-4.1	95.3	0.22	-0.11	5.26
4,734.0	1.90	6.90	4,731.9	97.9	-2.6	97.9	1.48	-0.11	-44.32
4,797.0	1.90	3.90	4,794.9	100.0	-2.4	100.0	0.16	0.00	-4.76
4,828.0	1.80	0.60	4,825.9	101.0	-2.4	101.0	0.47	-0.32	-10.65
4,860.0	4.70	355.10	4,857.8	102.8	-2.5	102.8	9.10	9.06	-17.19
4,892.0	9.20	356.90	4,889.6	106.7	-2.7	106.7	14.08	14.06	5.63
4,923.0	13.70	357.90	4,920.0	112.8	-3.0	112.8	14.53	14.52	3.23
4,955.0	16.40	359.70	4,950.9	121.1	-3.2	121.1	8.56	8.44	5.63
4,987.0	18.50	0.80	4,981.4	130.7	-3.1	130.7	6.64	6.56	3.44
5,018.0	21.20	1.30	5,010.5	141.2	-2.9	141.3	8.73	8.71	1.61
5,050.0	23.60	1.60	5,040.1	153.4	-2.6	153.4	7.51	7.50	0.94
5,082.0	25.30	0.90	5,069.3	166.7	-2.3	166.7	5.39	5.31	-2.19
5,113.0	25.90	359.90	5,097.2	180.1	-2.2	180.1	2.39	1.94	-3.23
5,145.0	26.90	358.80	5,125.9	194.3	-2.4	194.3	3.48	3.13	-3.44
5,177.0	28.40	359.50	5,154.2	209.1	-2.6	209.2	4.80	4.69	2.19
5,208.0	29.90	359.20	5,181.3	224.2	-2.8	224.3	4.86	4.84	-0.97
5,240.0	30.20	358.10	5,209.0	240.3	-3.2	240.3	1.96	0.94	-3.44
5,272.0	30.00	357.60	5,236.7	256.3	-3.8	256.3	1.00	-0.63	-1.56

Company:	Whiting Oil & Gas	Local Co-ordinate Reference:	Well Razor 25-2411H
Project:	SEC.25-T10N-R58W	TVD Reference:	WELL @ 4777.7ft (Original Well Elev)
Site:	Razor 25-2514H Pad Sec.25-T10N-R58W	MD Reference:	WELL @ 4777.7ft (Original Well Elev)
Well:	Razor 25-2411H	North Reference:	True
Wellbore:	Wellbore #1	Survey Calculation Method:	Minimum Curvature
Design:	Wellbore #1	Database:	Landmark

Survey										
Measured Depth (ft)	Inclination (°)	Azimuth (°)	Vertical Depth (ft)	+N/-S (ft)	+E/-W (ft)	Vertical Section (ft)	Dogleg Rate (°/100ft)	Build Rate (°/100ft)	Turn Rate (°/100ft)	
5,303.0	29.90	358.10	5,263.5	271.8	-4.4	271.8	0.87	-0.32	1.61	
5,335.0	31.50	356.40	5,291.0	288.1	-5.2	288.1	5.69	5.00	-5.31	
5,366.0	33.00	355.10	5,317.3	304.6	-6.4	304.6	5.33	4.84	-4.19	
5,398.0	33.30	354.60	5,344.1	322.0	-8.0	322.1	1.27	0.94	-1.56	
5,430.0	34.20	355.30	5,370.7	339.7	-9.5	339.8	3.06	2.81	2.19	
5,461.0	36.40	357.60	5,396.0	357.6	-10.6	357.7	8.29	7.10	7.42	
5,493.0	38.90	358.50	5,421.3	377.1	-11.3	377.2	8.00	7.81	2.81	
5,525.0	41.50	359.40	5,445.7	397.8	-11.6	397.9	8.33	8.13	2.81	
5,556.0	44.40	359.40	5,468.4	418.9	-11.9	419.0	9.35	9.35	0.00	
5,588.0	47.00	359.50	5,490.8	441.8	-12.1	441.9	8.13	8.13	0.31	
5,620.0	49.40	359.00	5,512.1	465.6	-12.4	465.7	7.59	7.50	-1.56	
5,652.0	52.10	358.30	5,532.3	490.4	-13.0	490.5	8.61	8.44	-2.19	
5,683.0	54.00	358.50	5,551.0	515.2	-13.7	515.3	6.15	6.13	0.65	
5,715.0	55.60	357.40	5,569.4	541.3	-14.6	541.4	5.73	5.00	-3.44	
5,746.0	57.80	356.70	5,586.4	567.2	-16.0	567.3	7.34	7.10	-2.26	
5,778.0	60.80	357.10	5,602.8	594.6	-17.4	594.8	9.44	9.38	1.25	
5,810.0	64.00	357.90	5,617.6	623.0	-18.7	623.2	10.24	10.00	2.50	
5,841.0	67.40	358.50	5,630.4	651.2	-19.6	651.4	11.11	10.97	1.94	
5,873.0	70.50	359.00	5,641.8	681.1	-20.2	681.3	9.80	9.69	1.56	
5,905.0	73.80	359.70	5,651.7	711.5	-20.6	711.7	10.52	10.31	2.19	
5,936.0	78.10	0.90	5,659.2	741.6	-20.4	741.8	14.37	13.87	3.87	
5,968.0	81.10	1.60	5,665.0	773.0	-19.7	773.2	9.62	9.38	2.19	
6,000.0	83.80	2.20	5,669.2	804.7	-18.7	804.9	8.64	8.44	1.88	
6,031.0	85.90	2.20	5,671.9	835.6	-17.5	835.7	6.77	6.77	0.00	
6,063.0	87.90	2.20	5,673.7	867.5	-16.2	867.7	6.25	6.25	0.00	
6,095.0	89.20	1.80	5,674.5	899.5	-15.1	899.6	4.25	4.06	-1.25	
6,120.0	90.80	1.80	5,674.5	924.5	-14.3	924.6	6.40	6.40	0.00	
6,195.0	92.40	1.80	5,672.4	999.4	-12.0	999.5	2.13	2.13	0.00	
6,226.0	92.30	1.60	5,671.1	1,030.4	-11.1	1,030.4	0.72	-0.32	-0.65	
6,256.0	92.10	1.30	5,670.0	1,060.3	-10.3	1,060.4	1.20	-0.67	-1.00	
6,287.0	91.10	1.30	5,669.1	1,091.3	-9.6	1,091.3	3.23	-3.23	0.00	
6,318.0	90.20	0.80	5,668.8	1,122.3	-9.0	1,122.3	3.32	-2.90	-1.61	
6,348.0	89.60	359.90	5,668.8	1,152.3	-8.9	1,152.3	3.61	-2.00	-3.00	
6,379.0	89.60	359.40	5,669.0	1,183.3	-9.0	1,183.3	1.61	0.00	-1.61	
6,410.0	88.70	358.30	5,669.5	1,214.3	-9.7	1,214.3	4.58	-2.90	-3.55	
6,441.0	89.00	358.80	5,670.1	1,245.3	-10.5	1,245.3	1.88	0.97	1.61	
6,471.0	89.70	359.70	5,670.4	1,275.3	-10.8	1,275.3	3.80	2.33	3.00	
6,502.0	89.30	359.40	5,670.7	1,306.3	-11.1	1,306.3	1.61	-1.29	-0.97	
6,533.0	89.30	358.80	5,671.1	1,337.3	-11.6	1,337.3	1.94	0.00	-1.94	
6,563.0	90.00	359.50	5,671.3	1,367.3	-12.0	1,367.3	3.30	2.33	2.33	
6,593.0	90.20	0.20	5,671.2	1,397.3	-12.1	1,397.3	2.43	0.67	2.33	
6,624.0	89.90	1.30	5,671.2	1,428.3	-11.7	1,428.3	3.68	-0.97	3.55	
6,655.0	90.40	1.50	5,671.1	1,459.2	-10.9	1,459.3	1.74	1.61	0.65	
6,686.0	89.30	0.40	5,671.2	1,490.2	-10.4	1,490.3	5.02	-3.55	-3.55	
6,716.0	90.00	0.80	5,671.4	1,520.2	-10.1	1,520.2	2.69	2.33	1.33	
6,747.0	89.50	0.40	5,671.5	1,551.2	-9.8	1,551.2	2.07	-1.61	-1.29	
6,778.0	88.60	0.10	5,672.0	1,582.2	-9.6	1,582.2	3.06	-2.90	-0.97	
6,809.0	89.90	0.80	5,672.4	1,613.2	-9.4	1,613.2	4.76	4.19	2.26	
6,840.0	90.20	0.60	5,672.4	1,644.2	-9.0	1,644.2	1.16	0.97	-0.65	
6,871.0	88.20	359.50	5,672.8	1,675.2	-9.0	1,675.2	7.36	-6.45	-3.55	
6,902.0	89.00	0.40	5,673.6	1,706.2	-9.0	1,706.2	3.88	2.58	2.90	
6,932.0	88.60	0.10	5,674.2	1,736.2	-8.9	1,736.2	1.67	-1.33	-1.00	
6,963.0	88.20	359.40	5,675.1	1,767.2	-9.0	1,767.2	2.60	-1.29	-2.26	
6,994.0	88.80	359.50	5,675.9	1,798.2	-9.3	1,798.2	1.96	1.94	0.32	

Company:	Whiting Oil & Gas	Local Co-ordinate Reference:	Well Razor 25-2411H
Project:	SEC.25-T10N-R58W	TVD Reference:	WELL @ 4777.7ft (Original Well Elev)
Site:	Razor 25-2514H Pad Sec.25-T10N-R58W	MD Reference:	WELL @ 4777.7ft (Original Well Elev)
Well:	Razor 25-2411H	North Reference:	True
Wellbore:	Wellbore #1	Survey Calculation Method:	Minimum Curvature
Design:	Wellbore #1	Database:	Landmark

Survey									
Measured Depth (ft)	Inclination (°)	Azimuth (°)	Vertical Depth (ft)	+N/-S (ft)	+E/-W (ft)	Vertical Section (ft)	Dogleg Rate (°/100ft)	Build Rate (°/100ft)	Turn Rate (°/100ft)
7,024.0	88.30	358.50	5,676.7	1,828.2	-9.8	1,828.1	3.73	-1.67	-3.33
7,055.0	88.20	358.10	5,677.6	1,859.1	-10.8	1,859.1	1.33	-0.32	-1.29
7,086.0	89.00	357.60	5,678.4	1,890.1	-11.9	1,890.1	3.04	2.58	-1.61
7,116.0	88.10	356.40	5,679.1	1,920.1	-13.5	1,920.1	5.00	-3.00	-4.00
7,147.0	88.10	356.00	5,680.2	1,951.0	-15.6	1,951.0	1.29	0.00	-1.29
7,178.0	88.90	356.90	5,681.0	1,981.9	-17.5	1,982.0	3.88	2.58	2.90
7,209.0	88.10	356.40	5,681.8	2,012.8	-19.3	2,012.9	3.04	-2.58	-1.61
7,240.0	88.10	356.40	5,682.8	2,043.8	-21.2	2,043.9	0.00	0.00	0.00
7,271.0	89.00	356.20	5,683.6	2,074.7	-23.2	2,074.8	2.97	2.90	-0.65
7,302.0	88.00	355.30	5,684.4	2,105.6	-25.5	2,105.7	4.34	-3.23	-2.90
7,333.0	88.40	355.80	5,685.4	2,136.5	-27.9	2,136.7	2.06	1.29	1.61
7,363.0	88.10	355.70	5,686.3	2,166.4	-30.2	2,166.6	1.05	-1.00	-0.33
7,394.0	87.80	355.80	5,687.4	2,197.3	-32.4	2,197.5	1.02	-0.97	0.32
7,424.0	89.50	357.60	5,688.1	2,227.2	-34.2	2,227.5	8.25	5.67	6.00
7,456.0	91.00	358.50	5,688.0	2,259.2	-35.3	2,259.5	5.47	4.69	2.81
7,487.0	91.90	359.20	5,687.2	2,290.2	-35.9	2,290.4	3.68	2.90	2.26
7,518.0	92.10	359.00	5,686.1	2,321.2	-36.4	2,321.4	0.91	0.65	-0.65
7,549.0	90.80	359.20	5,685.3	2,352.1	-36.9	2,352.4	4.24	-4.19	0.65
7,579.0	90.00	358.80	5,685.1	2,382.1	-37.4	2,382.4	2.98	-2.67	-1.33
7,610.0	90.60	359.20	5,684.9	2,413.1	-37.9	2,413.4	2.33	1.94	1.29
7,641.0	90.30	0.40	5,684.7	2,444.1	-38.0	2,444.4	3.99	-0.97	3.87
7,671.0	90.00	0.80	5,684.6	2,474.1	-37.7	2,474.4	1.67	-1.00	1.33
7,702.0	90.70	0.80	5,684.4	2,505.1	-37.3	2,505.4	2.26	2.26	0.00
7,732.0	91.10	0.90	5,684.0	2,535.1	-36.8	2,535.4	1.37	1.33	0.33
7,763.0	92.10	0.60	5,683.1	2,566.1	-36.4	2,566.4	3.37	3.23	-0.97
7,793.0	93.10	0.40	5,681.7	2,596.1	-36.2	2,596.3	3.40	3.33	-0.67
7,824.0	93.50	0.80	5,679.9	2,627.0	-35.8	2,627.3	1.82	1.29	1.29
7,855.0	93.10	1.10	5,678.2	2,658.0	-35.3	2,658.2	1.61	-1.29	0.97
7,886.0	92.20	1.50	5,676.7	2,688.9	-34.6	2,689.1	3.18	-2.90	1.29
7,917.0	92.20	1.30	5,675.5	2,719.9	-33.9	2,720.1	0.64	0.00	-0.65
7,948.0	91.40	0.90	5,674.6	2,750.9	-33.3	2,751.1	2.88	-2.58	-1.29
7,978.0	91.60	0.60	5,673.8	2,780.8	-32.9	2,781.0	1.20	0.67	-1.00
8,008.0	91.40	0.10	5,673.0	2,810.8	-32.7	2,811.0	1.79	-0.67	-1.67
8,039.0	90.20	0.10	5,672.6	2,841.8	-32.7	2,842.0	3.87	-3.87	0.00
8,070.0	90.10	0.20	5,672.5	2,872.8	-32.6	2,873.0	0.46	-0.32	0.32
8,101.0	90.30	0.10	5,672.4	2,903.8	-32.5	2,904.0	0.72	0.65	-0.32
8,131.0	90.00	359.90	5,672.3	2,933.8	-32.5	2,934.0	1.20	-1.00	-0.67
8,162.0	89.80	359.50	5,672.3	2,964.8	-32.7	2,965.0	1.44	-0.65	-1.29
8,192.0	89.30	0.20	5,672.6	2,994.8	-32.7	2,995.0	2.87	-1.67	2.33
8,223.0	89.20	0.80	5,673.0	3,025.8	-32.5	3,026.0	1.96	-0.32	1.94
8,254.0	89.60	2.30	5,673.3	3,056.8	-31.6	3,057.0	5.01	1.29	4.84
8,285.0	89.80	3.70	5,673.5	3,087.8	-30.0	3,087.9	4.56	0.65	4.52
8,315.0	89.60	4.60	5,673.6	3,117.7	-27.8	3,117.8	3.07	-0.67	3.00
8,346.0	89.60	4.10	5,673.9	3,148.6	-25.5	3,148.7	1.61	0.00	-1.61
8,377.0	88.90	3.40	5,674.3	3,179.5	-23.4	3,179.6	3.19	-2.26	-2.26
8,407.0	89.70	4.10	5,674.6	3,209.5	-21.5	3,209.5	3.54	2.67	2.33
8,438.0	89.50	5.20	5,674.8	3,240.4	-19.0	3,240.3	3.61	-0.65	3.55
8,469.0	89.10	5.90	5,675.2	3,271.2	-16.0	3,271.2	2.60	-1.29	2.26
8,500.0	89.30	5.50	5,675.7	3,302.1	-12.9	3,302.0	1.44	0.65	-1.29
8,529.0	89.10	4.40	5,676.1	3,330.9	-10.4	3,330.8	3.85	-0.69	-3.79
8,560.0	88.90	3.40	5,676.6	3,361.9	-8.3	3,361.7	3.29	-0.65	-3.23
8,590.0	89.10	2.30	5,677.1	3,391.8	-6.8	3,391.6	3.73	0.67	-3.67
8,621.0	88.70	0.80	5,677.7	3,422.8	-6.0	3,422.6	5.01	-1.29	-4.84
8,651.0	90.10	0.60	5,678.0	3,452.8	-5.6	3,452.6	4.71	4.67	-0.67

Company:	Whiting Oil & Gas	Local Co-ordinate Reference:	Well Razor 25-2411H
Project:	SEC.25-T10N-R58W	TVD Reference:	WELL @ 4777.7ft (Original Well Elev)
Site:	Razor 25-2514H Pad Sec.25-T10N-R58W	MD Reference:	WELL @ 4777.7ft (Original Well Elev)
Well:	Razor 25-2411H	North Reference:	True
Wellbore:	Wellbore #1	Survey Calculation Method:	Minimum Curvature
Design:	Wellbore #1	Database:	Landmark

Survey									
Measured Depth (ft)	Inclination (°)	Azimuth (°)	Vertical Depth (ft)	+N/-S (ft)	+E/-W (ft)	Vertical Section (ft)	Dogleg Rate (°/100ft)	Build Rate (°/100ft)	Turn Rate (°/100ft)
8,682.0	90.60	359.50	5,677.8	3,483.8	-5.6	3,483.6	3.90	1.61	-3.55
8,713.0	90.70	359.70	5,677.5	3,514.8	-5.8	3,514.6	0.72	0.32	0.65
8,744.0	90.80	359.40	5,677.1	3,545.8	-6.0	3,545.6	1.02	0.32	-0.97
8,775.0	91.10	358.80	5,676.6	3,576.8	-6.5	3,576.6	2.16	0.97	-1.94
8,806.0	91.20	357.90	5,675.9	3,607.8	-7.4	3,607.6	2.92	0.32	-2.90
8,835.0	91.00	357.60	5,675.4	3,636.7	-8.5	3,636.6	1.24	-0.69	-1.03
8,866.0	90.40	356.70	5,675.0	3,667.7	-10.1	3,667.5	3.49	-1.94	-2.90
8,896.0	91.20	355.50	5,674.6	3,697.6	-12.1	3,697.5	4.81	2.67	-4.00
8,927.0	91.90	355.50	5,673.8	3,728.5	-14.6	3,728.4	2.26	2.26	0.00
8,958.0	92.50	355.70	5,672.6	3,759.4	-16.9	3,759.3	2.04	1.94	0.65
8,989.0	92.80	356.00	5,671.1	3,790.3	-19.2	3,790.2	1.37	0.97	0.97
9,019.0	91.70	356.50	5,670.0	3,820.2	-21.1	3,820.2	4.03	-3.67	1.67
9,050.0	91.50	356.50	5,669.1	3,851.1	-23.0	3,851.1	0.65	-0.65	0.00
9,080.0	90.00	356.50	5,668.7	3,881.1	-24.9	3,881.1	5.00	-5.00	0.00
9,111.0	89.30	355.80	5,668.9	3,912.0	-26.9	3,912.0	3.19	-2.26	-2.26
9,141.0	89.00	355.30	5,669.3	3,941.9	-29.3	3,942.0	1.94	-1.00	-1.67
9,172.0	89.20	356.00	5,669.8	3,972.8	-31.6	3,972.9	2.35	0.65	2.26
9,203.0	90.20	356.20	5,670.0	4,003.7	-33.7	4,003.9	3.29	3.23	0.65
9,234.0	91.50	356.40	5,669.5	4,034.7	-35.7	4,034.8	4.24	4.19	0.65
9,264.0	91.90	356.40	5,668.6	4,064.6	-37.6	4,064.8	1.33	1.33	0.00
9,295.0	92.20	356.40	5,667.5	4,095.5	-39.6	4,095.7	0.97	0.97	0.00
9,325.0	91.70	357.20	5,666.5	4,125.5	-41.2	4,125.6	3.14	-1.67	2.67
9,356.0	92.70	356.90	5,665.3	4,156.4	-42.8	4,156.6	3.37	3.23	-0.97
9,387.0	93.90	356.40	5,663.5	4,187.3	-44.6	4,187.5	4.19	3.87	-1.61
9,417.0	94.40	356.00	5,661.4	4,217.1	-46.6	4,217.4	2.13	1.67	-1.33
9,448.0	95.40	356.50	5,658.7	4,248.0	-48.6	4,248.2	3.60	3.23	1.61
9,479.0	96.10	356.20	5,655.6	4,278.7	-50.6	4,279.0	2.45	2.26	-0.97
9,510.0	95.20	357.10	5,652.5	4,309.5	-52.4	4,309.9	4.10	-2.90	2.90
9,541.0	95.50	356.50	5,649.7	4,340.4	-54.1	4,340.7	2.16	0.97	-1.94
BHL 660'FNL, 660'FWL, SEC.24									

Checked By: _____	Approved By: _____	Date: _____
-------------------	--------------------	-------------